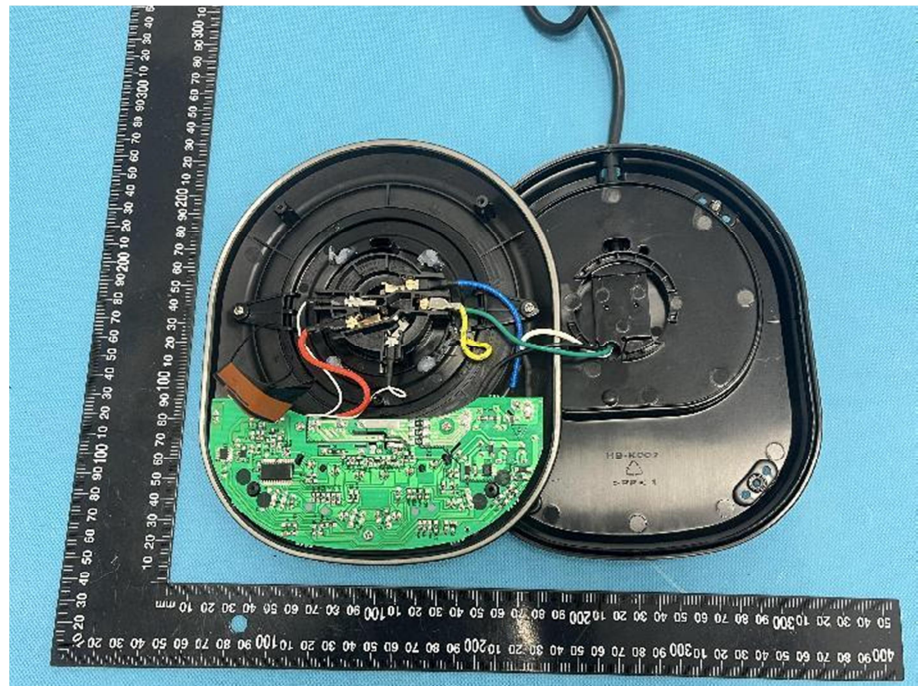
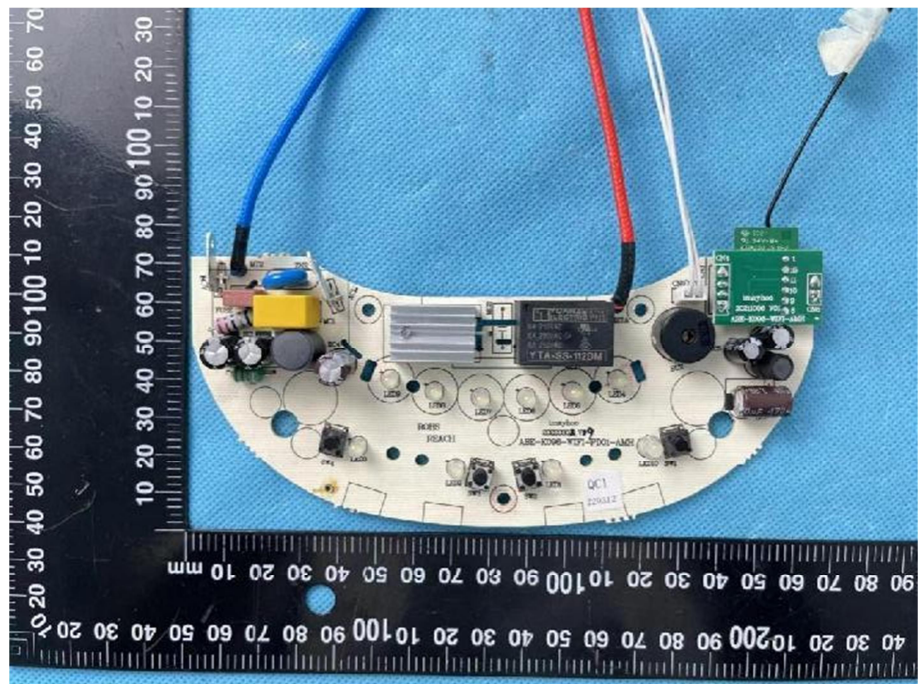


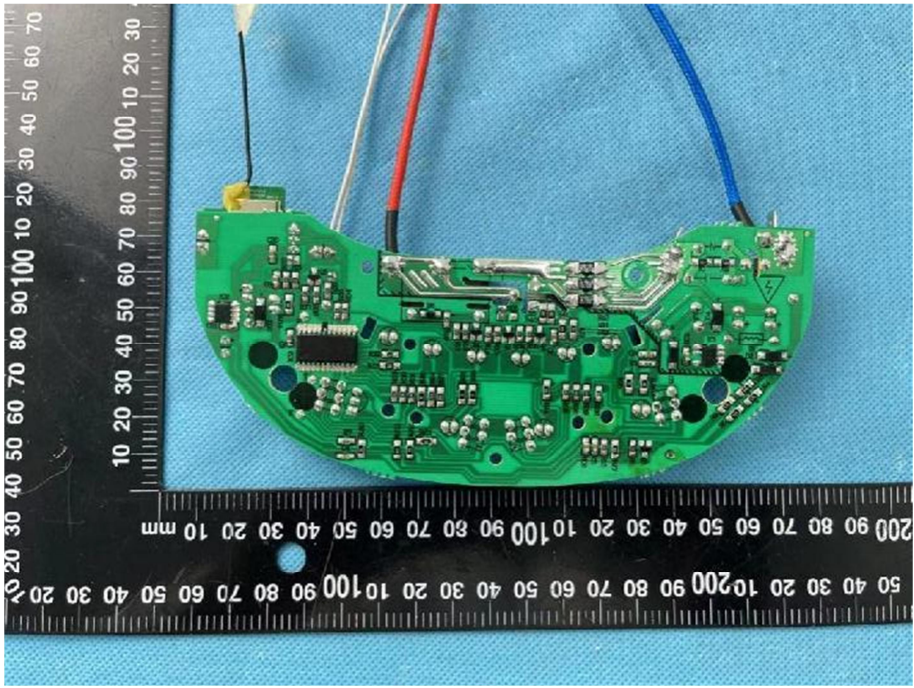
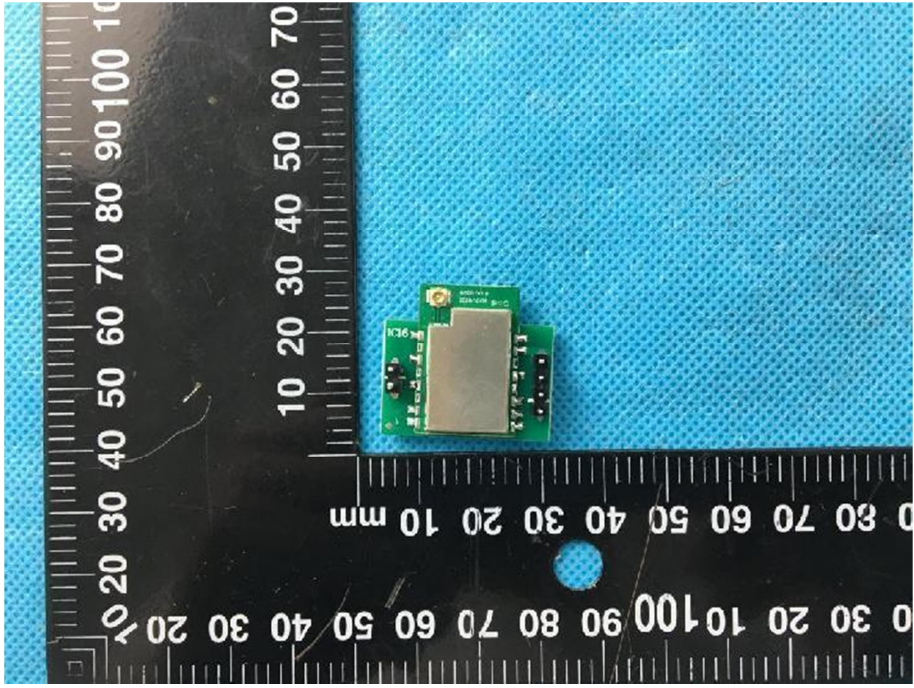
EXHIBIT 3 - EUT INTERNAL PHOTOGRAPHS

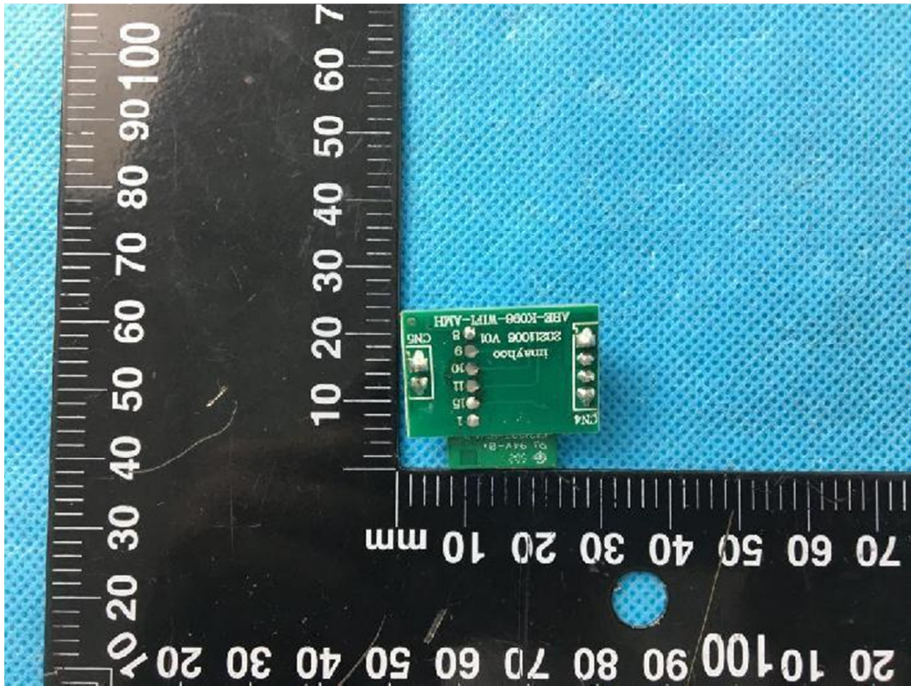
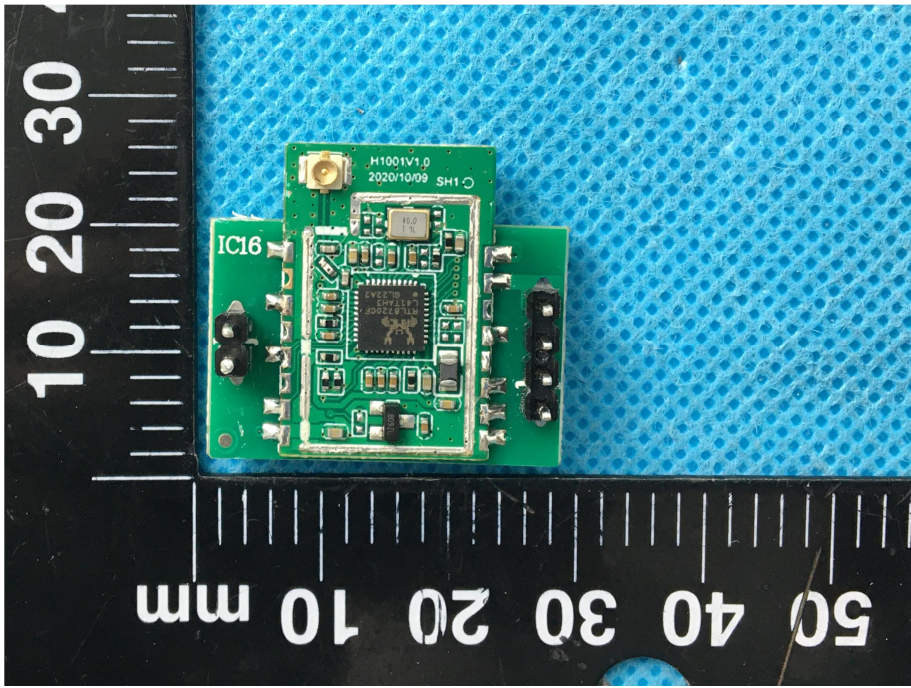
**EUT Housing and Board
View 1**



**Solder
Board-Component View
1**



<p style="text-align: center;">Solder Board-Component View 2</p>	 A photograph of a green printed circuit board (PCB) component, likely a wireless module, mounted on a blue textured surface. The component is semi-circular and populated with various electronic components, including a large integrated circuit (IC) in the center, several smaller ICs, and numerous surface-mount components. Three wires are connected to the board: a blue wire on the right, a red wire in the middle, and a white wire on the left. A black ruler with white markings is placed below the component for scale, showing measurements in millimeters. The ruler is oriented vertically, with the 0 mark at the top and the 100 mm mark at the bottom.
<p style="text-align: center;">Solder Board-Component View 3</p>	 A photograph of a smaller green PCB component, possibly a wireless module, mounted on a blue textured surface. The component is rectangular and features a large silver-colored metal shield or heat sink on its top surface. A black ruler with white markings is placed below the component for scale, showing measurements in millimeters. The ruler is oriented vertically, with the 0 mark at the top and the 100 mm mark at the bottom.

<p style="text-align: center;">Solder Board-Component View 4</p>	 <p>A photograph of a small green printed circuit board (PCB) component, labeled 'Solder Board-Component View 4'. The component is rectangular and features several surface-mount components, including a large integrated circuit (IC) and several smaller components. It is positioned on a blue textured surface. A black ruler with white markings is placed below the component for scale, showing measurements in millimeters. The ruler markings are visible on both the left and bottom edges of the image.</p>
<p style="text-align: center;">Solder Board-Component View 5</p>	 <p>A photograph of a larger green PCB component, labeled 'Solder Board-Component View 5'. The component is rectangular and features a complex arrangement of surface-mount components, including a large IC, several smaller components, and a gold-colored connector. It is positioned on a blue textured surface. A black ruler with white markings is placed below the component for scale, showing measurements in millimeters. The ruler markings are visible on the left and bottom edges of the image.</p>

Antenna View

