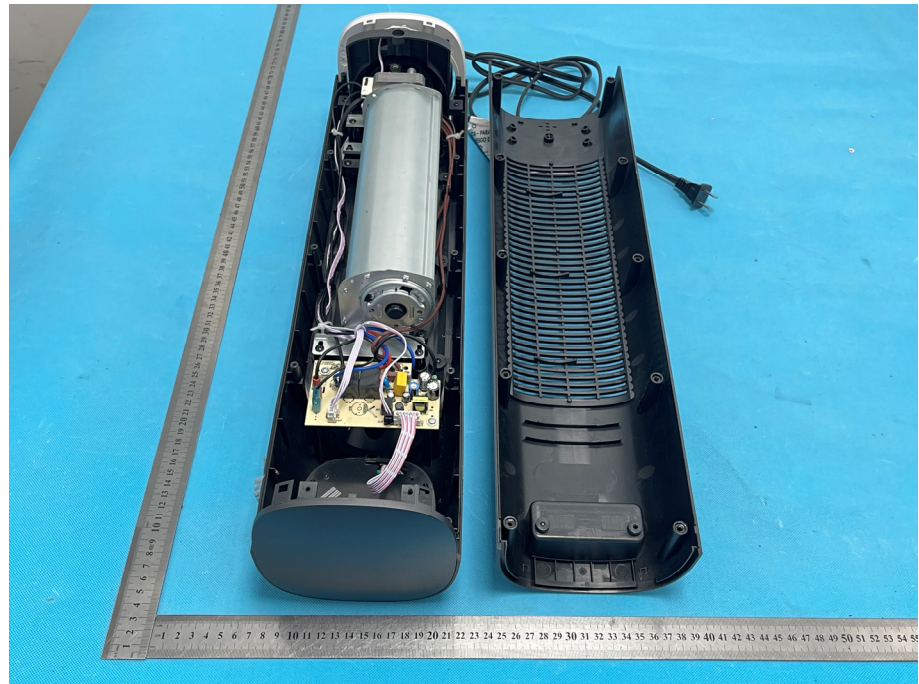


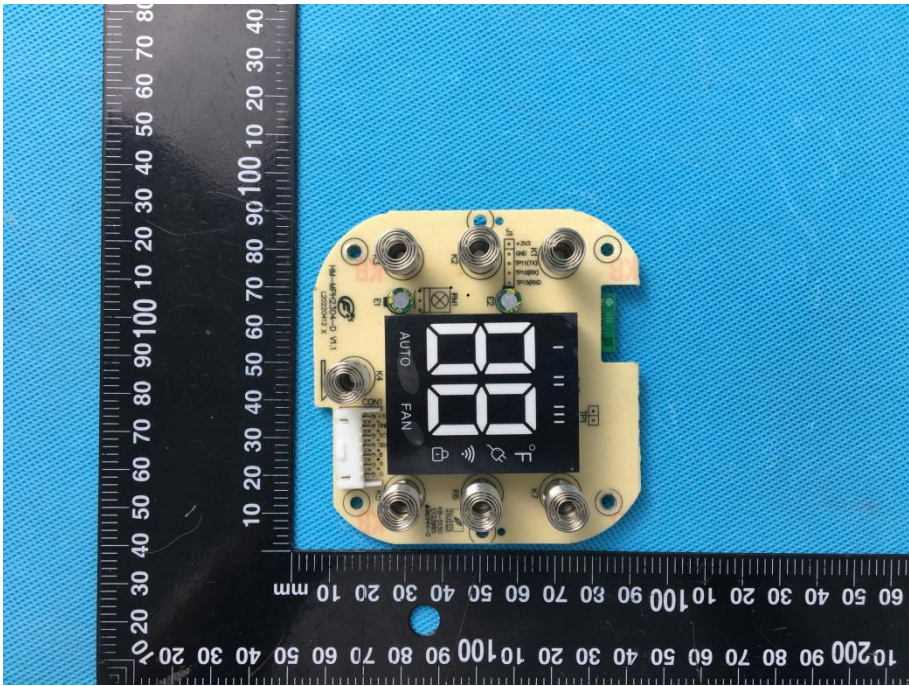
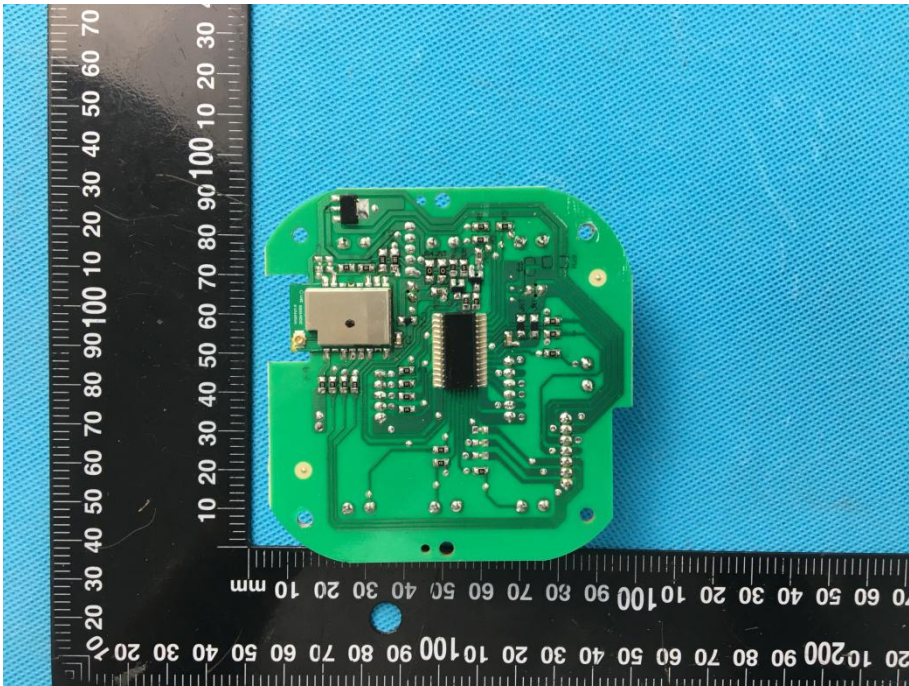
EXHIBIT 3 - EUT INTERNAL PHOTOGRAPHS

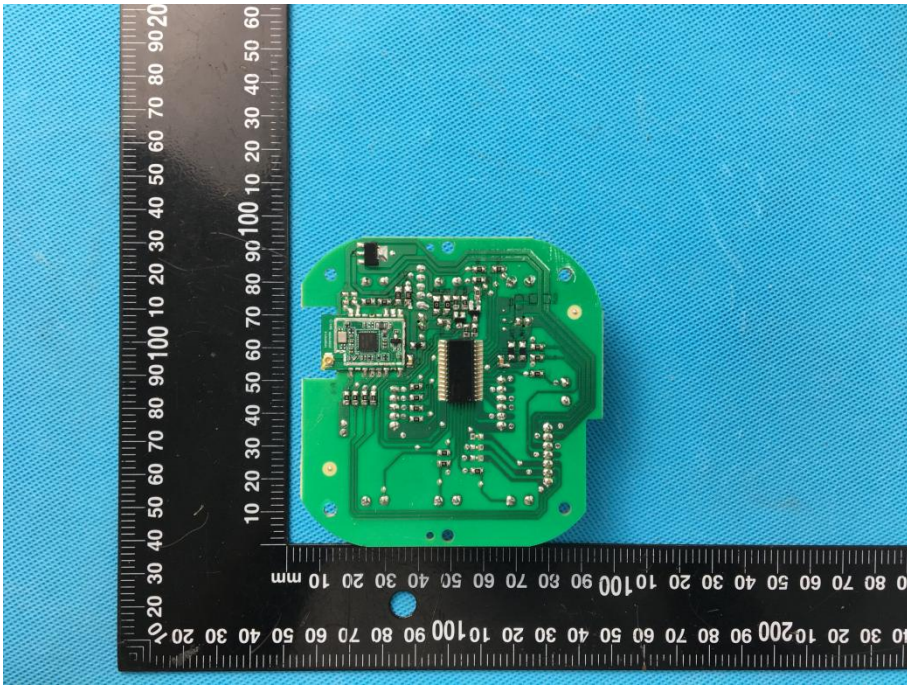
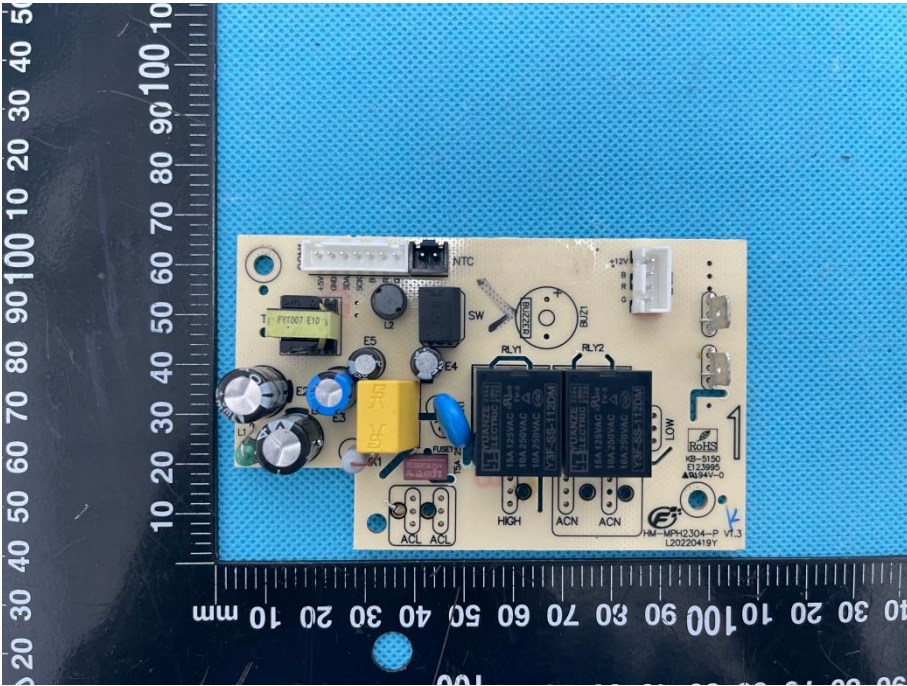
**EUT Housing and Board
View 1**

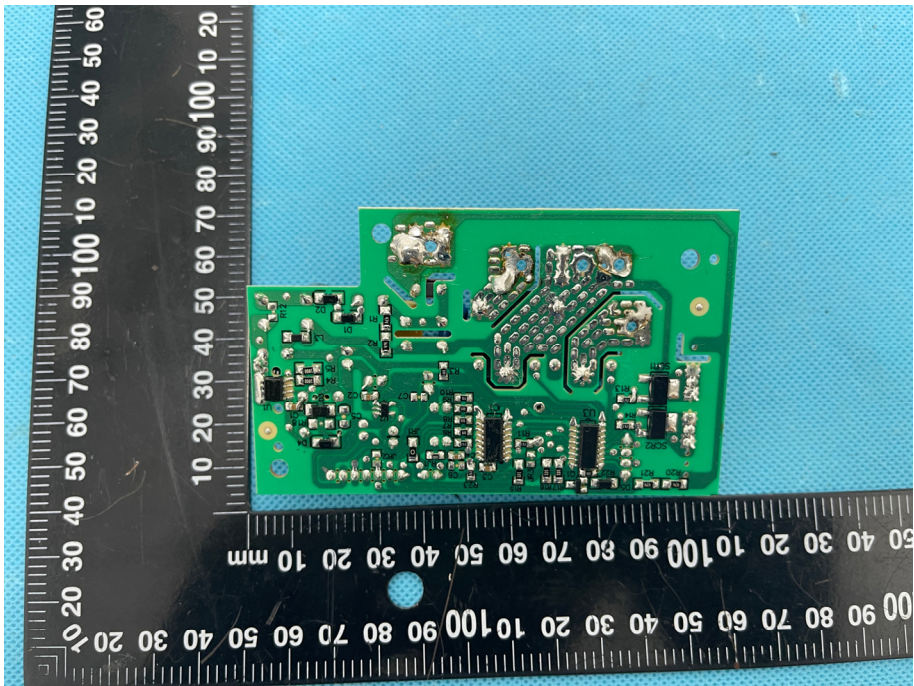
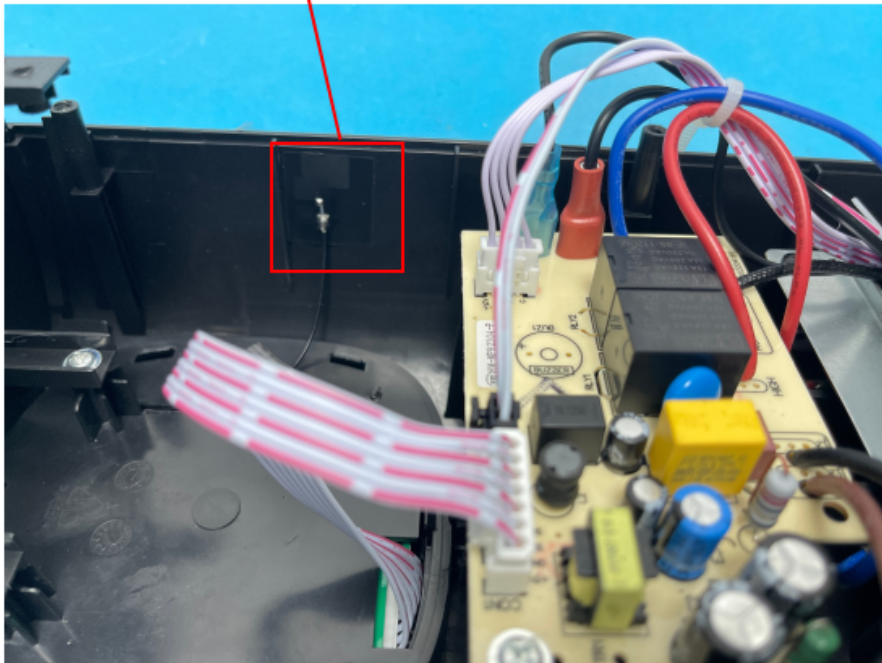


**EUT Housing and Board
View 2**



| | |
|---|---|
| <p style="text-align: center;">Solder Board-Component View 1</p> |  <p>A photograph of a yellow PCB component with a digital display and various connectors. The display shows '88'. The board is placed on a blue textured surface next to a black ruler with white markings. The ruler shows centimeter and millimeter scales. The component has several circular connectors and a central display area with icons for 'FAN', 'AUTO', and 'F'. There are also some small text labels on the board like '1.4M G-1022A100-1000'.</p> |
| <p style="text-align: center;">Solder Board-Component View 2</p> |  <p>A photograph of the reverse side of the yellow PCB component, showing a green PCB with various electronic components, including a large chip and several smaller components. The board is placed on a blue textured surface next to a black ruler with white markings. The ruler shows centimeter and millimeter scales.</p> |

| | |
|---|--|
| <p style="text-align: center;">Solder Board-Component View 3</p> |  <p>A photograph of a green PCB component with various electronic components soldered onto it. The component is placed on a blue textured surface next to a black ruler with white markings. The ruler shows measurements in millimeters, with the component's length being approximately 100mm and its width around 40mm.</p> |
| <p style="text-align: center;">Solder Board-Component View 4</p> |  <p>A photograph of a white PCB component with various electronic components soldered onto it. The component is placed on a blue textured surface next to a black ruler with white markings. The ruler shows measurements in millimeters, with the component's length being approximately 100mm and its width around 40mm. The component features several relays (RLY1, RLY2), capacitors (E1, E2, E3, E4, E5), a switch (SW), and other components. Labels like NTC, BZT1, and +12V are visible. The bottom right corner of the component has the text: RoHS, KB-5150, E123995, A9884V-0, HM-MPHG304-P V1.3, L20220419Y.</p> |

| | |
|---|--|
| <p>Solder Board-Component View 5</p> |  <p>A photograph of a green printed circuit board (PCB) populated with various electronic components, including integrated circuits, capacitors, and resistors. The board is shown against a blue background with a black ruler for scale. The ruler has markings in millimeters (0 to 100) and centimeters (0 to 10). The board is oriented vertically, with the ruler placed horizontally below and to the left of it.</p> |
| <p>Antenna View</p> |  <p>A photograph showing the internal components of a device, including a yellow PCB with various electronic components like capacitors and a transformer. A red and white striped ribbon cable is connected to the board. A red box highlights a small component on the board, with a red line pointing to a label that reads "WIFI /BT Antenna".</p> |