
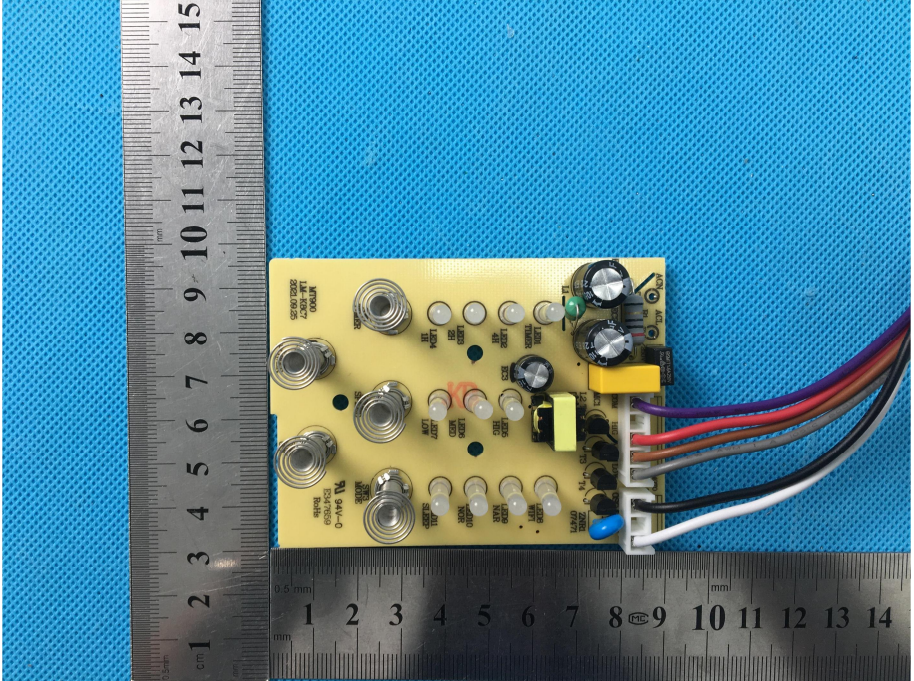
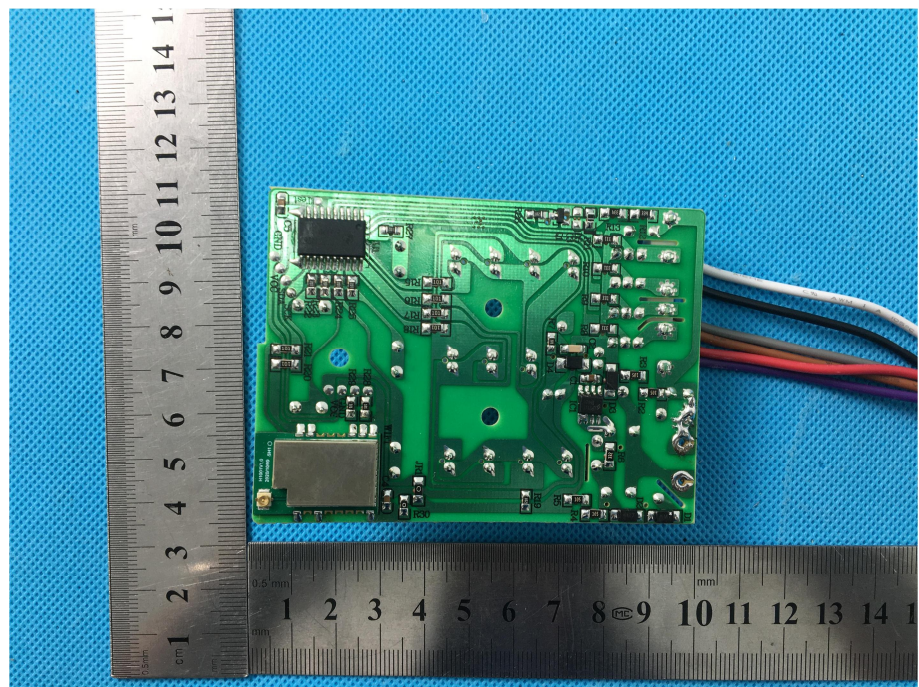


EXHIBIT 3 - EUT INTERNAL PHOTOGRAPHS

<p>EUT Housing and Board View 1</p>	 A photograph showing the internal components of a device housed in a black, ribbed, dome-shaped casing. The casing is mounted on a black base. A green printed circuit board (PCB) is visible inside, with various electronic components and wires. A metal ruler is placed vertically to the left of the device for scale, showing measurements in centimeters and millimeters. The background is a blue textured surface.
<p>Solder Board-Component View 1</p>	 A close-up photograph of a yellow PCB component, likely a solder board, showing various electronic components such as resistors, capacitors, and integrated circuits. The board is populated with numerous components, including several large electrolytic capacitors and smaller surface-mount components. A metal ruler is placed vertically to the left of the board for scale, showing measurements in centimeters and millimeters. The background is a blue textured surface.

**Solder
Board-Component View
2**



**Solder
Board-Component View
3**

