

2. Enable Bluetooth on your smartphone.
3. Open the app, tap the “+” icon in the top right corner, and search “H6071”.
4. Tap the device icon and follow the onscreen instructions to complete pairing.

## Specifications

Model	H6071
Adapter Input	AC 100-240V
Lamp Input	12V 1A
Lumens	700lm
Colors	CW/WW
Color Temperature	2200K-6500K
Control Method	Touch Control, App, Voice Control,
Operating Temperature	-10° to 40°C / 14° to 104°F

## Troubleshooting

1. Cannot connect to the Govee Home app.
  - a. Check if the lamp is powered on.
  - b. Check if Bluetooth on the smartphone is enabled, or try connecting with another smartphone.
  - c. When connecting for the first time, ensure the smartphone is near the lamp.
  - d. If the connection error still exists, please delete the connected device from “My Device” on the app. Reconnect to the Govee Home app by following the instructions provided previously.
2. Wi-Fi disconnects or fails to connect.
  - a. Check that the lamp is powered on.
  - b. Do not skip the Wi-Fi connection steps during the device pairing process.
  - c. Ensure your Wi-Fi router is 2.4GHz (5GHz is not supported).
  - d. Ensure you have entered the correct Wi-Fi password during the Wi-Fi setup process.
  - e. Try using another smartphone to pair with the lamp to ensure your network is working properly.
  - f. Shorten the distance between the lamp and the Wi-Fi router to less than 50 inches, then reconnect.

3. Cannot connect to Alexa or Google Assistant.
  - a. Ensure the Wi-Fi connection is stable and working properly.
  - b. Go to “User Guide” in the app settings page to pair the lamp again.
4. Can multiple users control one lamp?
  - a. Each lamp can only be controlled by one account.
  - b. If multiple users want to manage the same lamp, ensure they all use the same account.



## Customer Service

 Warranty: 12-Month Limited Warranty

 Support: Lifetime Technical Support

 Email: support@govee.com

 Official Website: www.govee.com

 @Govee  @govee\_official  @govee.official

 @Goveeofficial  @Govee.smarthome

## FCC and ISED Canada Statement

This device complies with Part 15 of the FCC Rules and Industry Canada licence-exempt RSS standard(s). Operation is subject to the following two conditions:  
 (1) This device may not cause harmful interference, and (2) This device must accept any interference received, including interference that may cause undesired operation.  
 Warning: Changes or modifications not expressly approved by the party responsible for compliance could void the user's authority to operate the equipment.

Le présent appareil est conforme aux CNR d'Industrie Canada applicables aux appareils radio exempts de licence. L'exploitation est autorisée aux deux conditions suivantes :  
 (1) l'appareil ne doit pas produire de brouillage, et  
 (2) l'utilisateur de l'appareil doit accepter tout brouillage radioélectrique subi, même si le brouillage est susceptible d'en compromettre le fonctionnement.

**NOTE:** This equipment has been tested and found to comply with the limits for a Class B digital device, pursuant to Part 15 of the FCC Rules.

These limits are designed to provide reasonable protection against harmful interference in a residential installation. This equipment generates uses and can radiate radio frequency energy and, if not installed and used in accordance with the instructions, may cause harmful interference to radio communications. However, there is no guarantee that interference will not occur in a particular installation. If this equipment does cause harmful interference to radio or television reception, which can be determined by turning the equipment off and on, the user is encouraged to try to correct the interference by one or more of the following measures:

1. Reorient or relocate the receiving antenna.
2. Increase the separation between the equipment and receiver.
3. Connect the equipment into an outlet on a circuit different from that to which the receiver is connected.
4. Consult the dealer or an experienced radio/TV technician for help.

This Class B digital apparatus complies with Canadian ICES-005.  
 Cet appareil numérique de la classe B est conforme à la norme NMB-005 du Canada.  
 la distance entre l'utilisation et l'appareil ne doit pas être inférieure à 20 cm.

## FCC and IC Radiation Exposure Statement

This equipment complies with FCC and IC radiation exposure limits set forth for an uncontrolled environment. This equipment should be installed and operated with minimum distance 20cm between the radiator & your body.

la distance entre l'utilisation et l'appareil ne doit pas être inférieure à 20 cm.

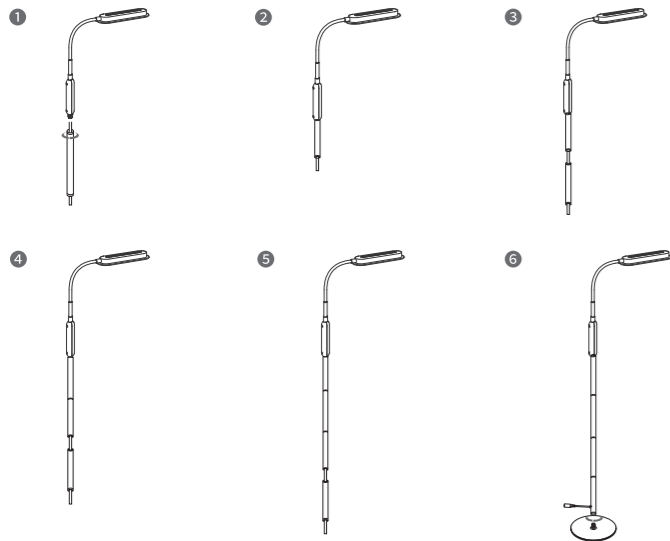


# User Manual



Model:H6071  
LED Floor Lamp

## Installing Your Device



### Installing Steps

1. Assemble this floor lamp by following the provided instructions.
2. Power on the adapter.

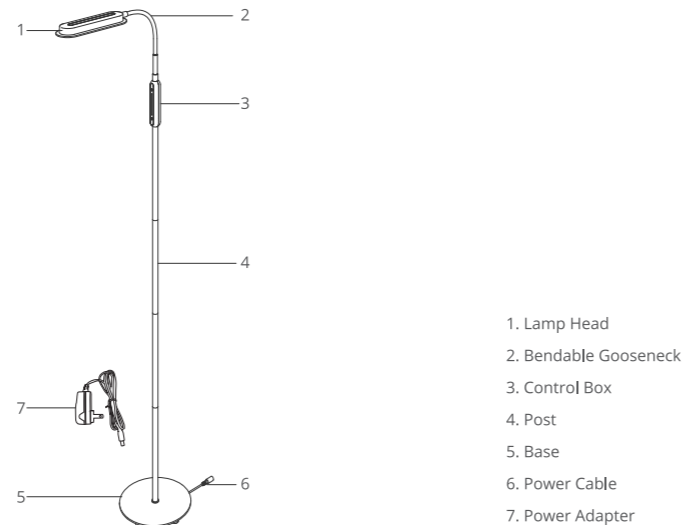
## Pairing Your Lamp with the Govee Home App

### What You Need:

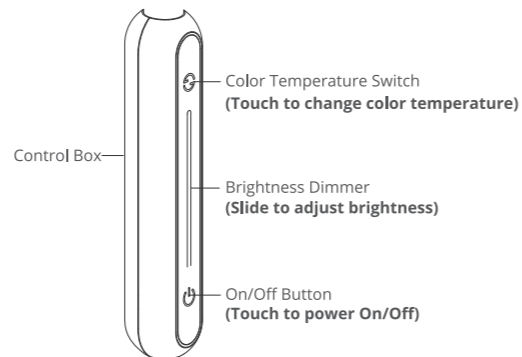
A Wi-Fi router supporting the 2.4GHz and 802.11 b/g/n bands. 5GHz is not supported.

1. Download the Govee Home app from the App Store (iOS devices) or Google Play (Android devices).

## At a Glance



1. Lamp Head
2. Bendable Gooseneck
3. Control Box
4. Post
5. Base
6. Power Cable
7. Power Adapter



## Safety Instructions

Read and follow all safety instructions in this manual.

- This lamp is not waterproof. Avoid exposing it to splashing or dripping water.
- Operating temperature should be within -10° to 40°C (14° to 104°F).
- This lamp's internal light source cannot be replaced. If it breaks, you must replace the entire lamp.
- Do not allow children to assemble the lamp by themselves.
- Avoid placing the lamp near heat sources.
- Avoid placing the lamp near potentially dangerous sources (e.g., candles, liquid-filled objects, etc.).

## Introduction

Thanks for choosing Govee Smart LED Floor Lamp. This floor lamp has a slender, exquisite shape, with a flexible gooseneck that can be bent in any direction to light all the spaces of your home. Connect this lamp to the Govee Home app to control it remotely via Wi-Fi, and bind with Alexa or Google Home for smart voice control to light up your life hands-free. Lastly, multiple preset scene modes provide cozy environments at a tap of a finger for reading or entertainment.

## What You Get

Floor Lamp	1
Power Adapter	1
User Manual	1
Service Card	1

### Responsible party :

Name: GOVEE MOMENTS(US) TRADING LIMITED  
Address: 13013 WESTERN AVE STE 5 BLUE ISLAND IL 60406-2448  
Email: support@govee.com  
Contact information: <https://www.govee.com/support>

This device uses a non-replaceable light source. When the light source reaches the end of its life cycle, this device should be replaced.



FOR INDOOR USE ONLY  
POUR UNE UTILISATION EN INTÉRIEUR UNIQUEMENT

The Bluetooth® word mark and logos are registered trademarks owned by Bluetooth SIG, Inc. and any use of such marks by Shenzhen Intellirocks Tech. Co., Ltd. is under license.

Govee is a trademark of Shenzhen Intellirocks Tech Co.,Ltd.  
Copyright ©2021 Shenzhen Intellirocks Tech Co.,Ltd. All Rights Reserved.



Govee Home App

For FAQs and more information,  
please visit: [www.govee.com](http://www.govee.com)

# H6071说明书

版本：1.0

折叠尺寸：105\*145mm

展开尺寸：420\*145mm

材质：80G书页纸

工艺：单色印刷

折叠方式：风琴页