

# Antenna Test Report

Testing laboratory: Dongguan Yijia Electronics Co., Ltd.  
Laboratory address: No. 59, Muyu Road, Shatou Community,  
Chang'an Town, Dongguan City, Guangdong Province  
Contact: Mr. Gan 13823198410

Test Mode: H6065

Manufacturer: GLOBAL SUCCESS CIRCUITS CO LTD

Address: Second-Period Of Industrial Park Wan'An County Ji'an,  
JiangXi 343800 China.

## 1. Test Procedures (Test Standards):

### 3.1 Test standard

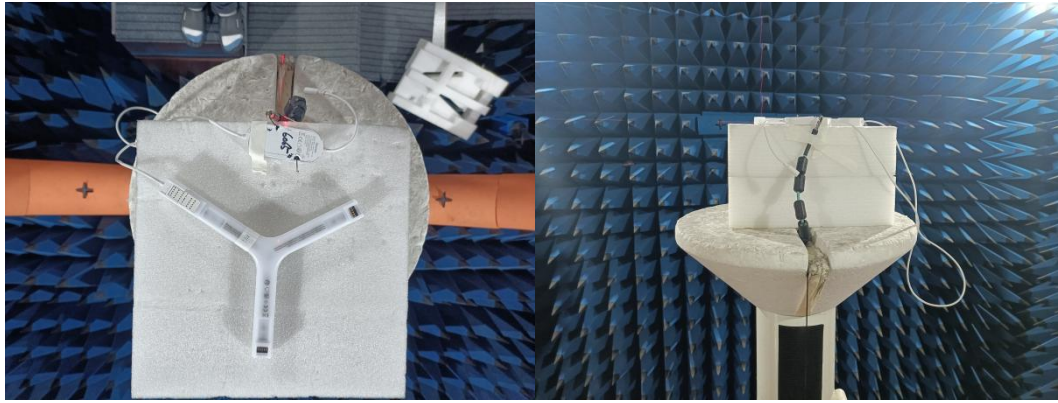
Name	Parameter	Method	Standard no.
Mobile communication antenna	VSWR	Generic specification for antennas used in the mobile communications	GB/T 9410-2008
	Antenna gain		
	Radiation pattern		
Antenna	Radiation efficiency	IEEE Standard Test Procedures for Antennas	ANSI/IEEE Std 149-1979

## 2. Equipment List;

### 1.3 Test equipment

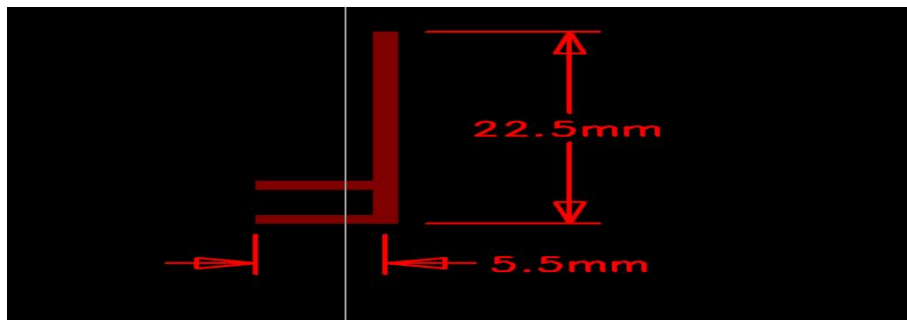
Equipment	Model No.	Serial No.	Manufacturer	Calibration date	Next calibration date
16 probe microwave chamber	3*3*2.5	RFI-LAB-RF-A00	SUNYIELD	2021.3.15	2023.3.14
Network Analyzer	E5071C	RFI-LAB-RF-A02	Agilent	2022.4.29	2023.4.28
Network Analyzer	E5071C	RFI-LAB-RF-C02	KEYSIGHT	2022.4.29	2023.4.28

## 3. Test Setup Diagram;



## 4. Test data

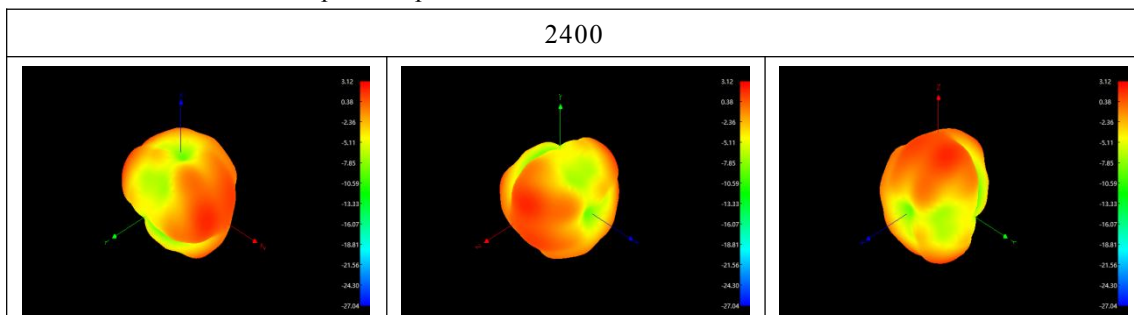
### 4.1.1 Bluetooth Antenna physical size

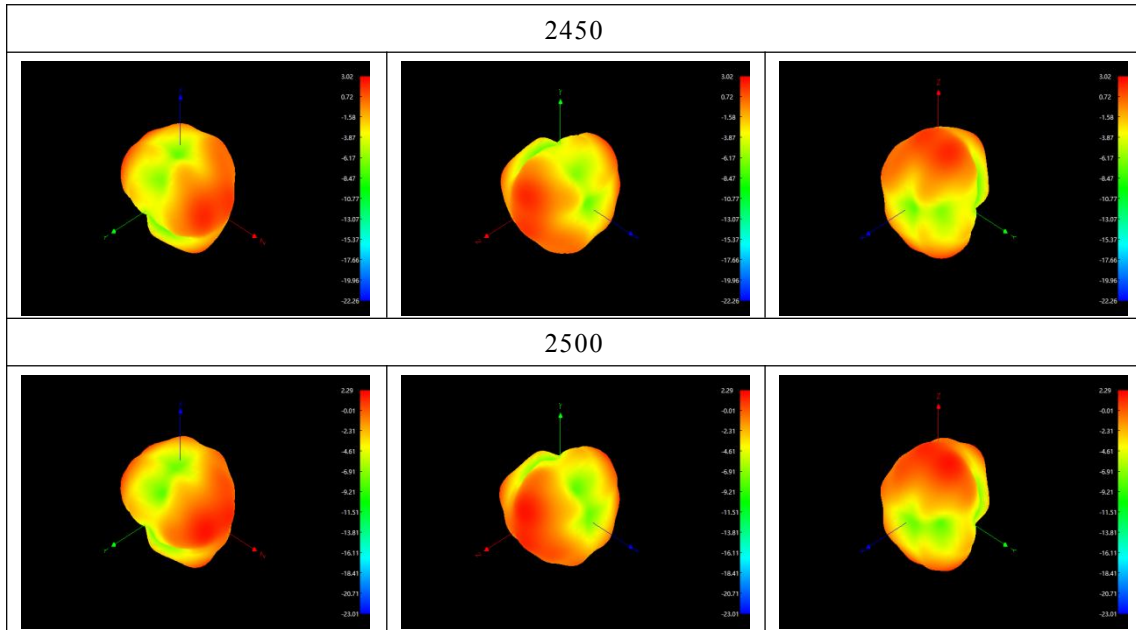


### 4.1.2 Bluetooth Antenna type: PCB antenna

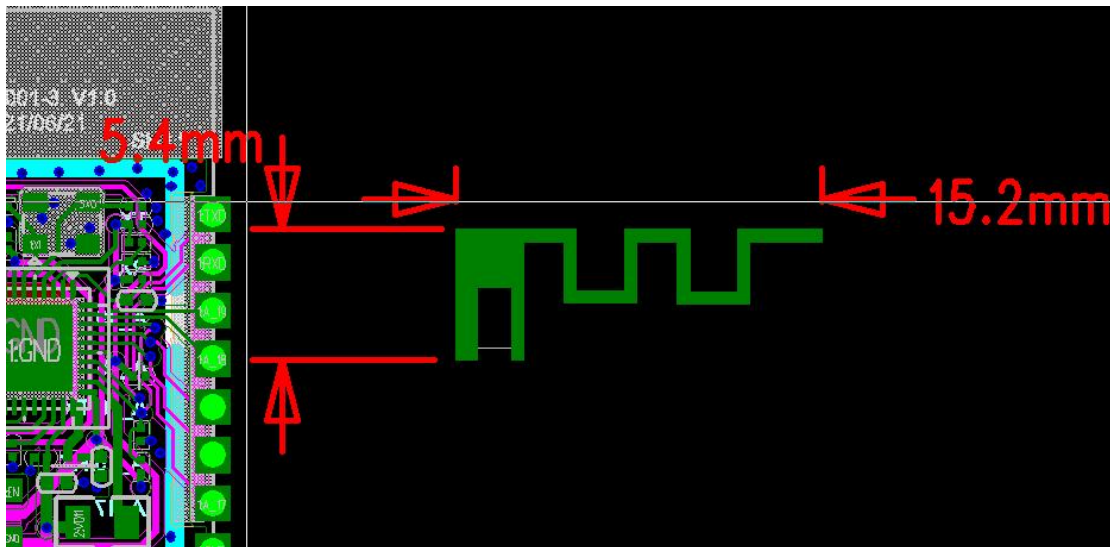
Frequency / MHz	Gain/ dB
2400	3.12
2410	3.22
2420	<b>3.23</b>
2430	3.04
2440	2.6
2450	3.02
2460	2.7
2470	3.05
2480	2.59
2490	2.77
2500	2.29

### 4.1.3 Bluetooth antenna pattern pictuter





#### 4.2.1 Wi-Fi Antenna physical size



#### 4.2.2 WIFI Antenna type: PCB antenna

Frequency / MHz	Gain/ dB
2400	3.36
2410	3.37
2420	3.37
2430	3.48
2440	3.29
2450	3.73
2460	3.68
2470	4.3
2480	4.1
2490	<b>4.42</b>
2500	3.98

### 4.2.3 Bluetooth antenna pattern pictuter

