

## English

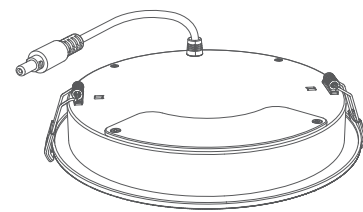
### Safety Instructions

Read and follow all the safety instructions:

- The downlight is not waterproof. Avoid exposing it to splashes or water drops.
- The operating temperature should be within -10° to 40°C (14° to 104°F).
- The downlight internal light source is unfixable. If it breaks, the entire downlight must be replaced.
- Do not allow children to install the downlight.
- External dimmers cannot be used with this product.
- Installation and maintenance should be operated by a professional.
- Avoid installing the downlight near heat sources or in damp locations.
- Avoid installing the downlight near potentially dangerous sources (e.g., candles, liquid-filled objects).

01

### At a Glance



Thanks for choosing Govee Smart LED Downlight. This product can be quickly connected to your smartphone in just a few steps. You can change its color, set timers, and DIY your own lighting scenes.

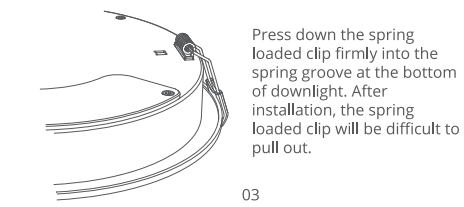
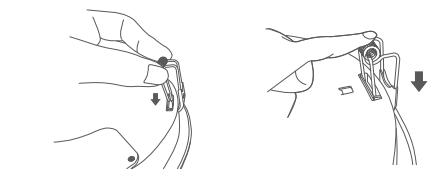
### Specifications

Working Voltage	AC 120V
Power	14W
Lumen	1100lm
Color Temperature	2700K-6500K
Working Temperature	-10°C to 40°C/14°F to 104°F
Color	RGBWW

02

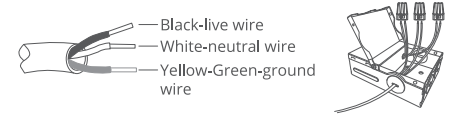
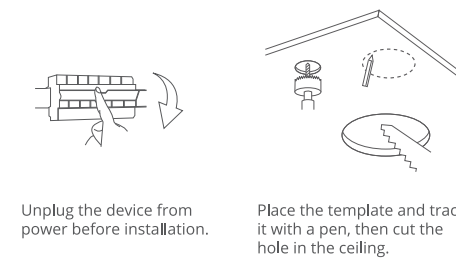
### Installing Your Device

per Pack:



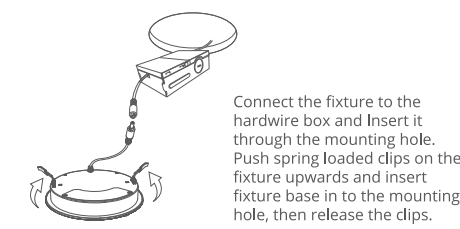
Press down the spring loaded clip firmly into the spring groove at the bottom of downlight. After installation, the spring loaded clip will be difficult to pull out.

03



Open the hardwire box swing cover. Push open the round hole on the side by a tool. Using wire terminals, connect green ground wire of cable to green ground wire of box, so are the white wire and the black wire.

04



Connect the fixture to the hardwire box and Insert it through the mounting hole. Push spring loaded clips on the fixture upwards and insert fixture base in to the mounting hole, then release the clips.

Notice:

- a. Make sure the distance between the devices and the router is less than 100ft.
- b. Keep as few obstructions (e.g. wall, windows) as possible between the devices and the router.

### Pairing Your Downlight with Govee Home App

What You Need:

- A Wi-Fi router supporting the 2.4GHz and 802.11 b/g/n bands. 5GHz is not supported.
- A smartphone or tablet running iOS 8.0 (or above) or Android 4.3 (or above).

05



- 1 Download the Govee Home App from the App Store (iOS devices) or Google Play (Android devices).
- 2 Turn on the Bluetooth in your smartphone.
- 3 Open the app, tap "+" icon in the top right corner and search "H601A".
- 4 Tap the device icon and follow the on-screen instructions to complete pairing.

### Controlling the Downlight with Your Voice

- 1 Open the Govee Home App, then tap the device icon to enter the details page.
- 2 Tap the "setting" icon in the top right corner.
- 3 Select "Using Guidance" and follow the on-screen instructions to begin using voice control.

06



Govee Home App

For FAQs and more information, please visit: [www.govee.com](http://www.govee.com)

## Troubleshooting

❶ Cannot connect the downlight to Govee Home.

- Check whether the downlight is powered on.

- Check whether your smartphone Wi-Fi is enabled. Please make sure Wi-Fi connected to your phone is 2.4GHz (5GHz brand is not supported).

- Make sure your smartphone is close to the device when connecting for the first time.

- Check if you have entered the correct Wi-Fi password during Wi-Fi setup.

- Make sure the distance between the bulb and router is less than 50ft.

- Check whether the home network is stable by connecting downlight to another phone's hotspot.

❷ The downlight lost connection.

- Check whether the device is powered on.

- Check whether your home network is stable.

- Check if there are too many devices connected to the router by connecting downlight to another phone's hotspot.

- Ensure the distance between the smartphone and the device does not exceed 50ft.

- Delete downlight connected in "My Devices" and reconnect the downlight to Wi-Fi following on-screen instructions.

❸ Can I group multiple Govee devices together?

- Yes, you can group multiple downlights and other govee devices by Schemes, Same model, General (Wi-Fi or Bluetooth devices). It depends on the function of different devices.

❹ Can I use group control with voice assistance?

- Please make sure your device is connected to Wi-Fi before using voice assistance.

- Please set voice group control in Alexa/Google Assistant App.

❺ What is the maximum number of devices I can connect via Bluetooth?

- Typically, up to 6 devices can be connected devices may vary based on your smartphone brand.

❻ How many downlights can be connected to one phone?

- Up to 50 downlights can be connected to one phone if the network is normal.

## Customer Service

🛡️ Warranty: 12-Month Limited Warranty

🗣️ Support: Lifetime Technical Support

✉️ Email: support@govee.com

🌐 Official Website: [www.govee.com](http://www.govee.com)

📺 @Govee 📷 @govee\_official 📢 @govee.official

🐦 @Goveeofficial 📘 @Govee.smarthome

## FCC Statement

This device complies with Part 15 of the FCC Rules. Operation is subject to the following two conditions: (1) This device may not cause harmful interference, and (2) This device must accept any interference received, including interference that may cause undesired operation.

Warning: Changes or modifications not expressly approved by the party responsible for compliance could void the user's authority to operate the equipment.

**NOTE:** This equipment has been tested and found to comply with the limits for a Class B digital device, pursuant to Part 15 of the FCC Rules.

These limits are designed to provide reasonable protection against harmful interference in a residential installation. This equipment generates uses and can radiate radio frequency energy and, if not installed and used in accordance with the instructions, may cause harmful interference to radio communications. However, there is no guarantee that interference will not occur in a particular installation. If this equipment does cause harmful interference to radio or television reception, which can be determined by turning the equipment off and on, the user is encouraged to try to correct the interference by one or more of the following measures: 1. Reorient or relocate the receiving antenna. 2. Increase the separation between the equipment and receiver. 3. Connect the equipment into an outlet on a circuit different from that to which the receiver is connected. 4. Consult the dealer or an experienced radio/TV technician for help.

## FCC Radiation Exposure Statement

This equipment complies with FCC radiation exposure limits set forth for an uncontrolled environment. This equipment should be installed and operated with minimum distance 20cm between the radiator & your body.

The Bluetooth® word mark and logos are registered trademarks owned by Bluetooth SIG, Inc. and any use of such marks by Shenzhen Intellirocks Tech. Co., Ltd. is under license.

	Bluetooth®	Wi-Fi
Frequency	2.4GHz	2.4GHz
Maximum Power	<6.5dBm	<21dBm

## IC Statment

This device complies with Industry Canada licence-exempt RSS standard(s). Operation is subject to the following two conditions:

(1) this device may not cause interference, and (2) this device must accept any interference, including interference that may cause undesired operation of the device."

Le présent appareil est conforme aux CNR d'Industrie Canada applicables aux appareils radio exempts de licence. L'exploitation est autorisée aux deux conditions suivantes:

(1) l'appareil nedit pas produire de brouillage, et (2) l'utilisateur de l'appareil doit accepter tout brouillage radioélectrique subi, même si le brouillage est susceptible d'en compromettre le fonctionnement.

## IC RF Statement

When using the product, maintain a distance of 20cm from the body to ensure compliance with RF exposure requirements.

Lors de l'utilisation du produit, maintenez une distance de 20 cm du corps afin de vous conformer aux exigences en matière d'exposition RF.

THIS DEVICE IS NOT INTENDED FOR USE WITH EMERGENCY EXITS  
NE CONVIENT PAS AUX SORTIES DE SECOURS

Govee is a trademark of Shenzhen Intellirocks Tech. Co., Ltd. Copyright ©2021 Shenzhen Intellirocks Tech. Co., Ltd. All Rights Reserved.



# User Manual



Model: H601A

WiFi+Bluetooth RGBWW Downlight