

FCC Test Report

Client Name : Shenzhen Intellirocks Tech. Co., Ltd.
Address : Room 401 Building 9, YunGu phase II, Nanshan, Liuxian Avenue,
Taoyuan Street, Nanshan District, Shenzhen, China
Product Name : Motion Sensor
Date : Dec. 12, 2019

Shenzhen Anbotek Compliance Laboratory Limited

Contents

1. General Information	4
1.1. Client Information	4
1.2. Description of Device (EUT).....	4
1.3. Auxiliary Equipment Used During Test	5
1.4. Description of Test Modes	5
1.5. List of channels	5
1.6. Description Of Test Setup	6
1.7. Test Equipment List	7
1.8. Measurement Uncertainty	8
1.9. Description of Test Facility.....	8
2. Summary of Test Results	9
3. Conducted Emission Test	10
3.1. Test Standard and Limit	10
3.2. Test Setup	10
3.3. Test Procedure	10
3.4. Test Data	10
4. Radiation Spurious Emission and Band Edge	13
4.1. Test Standard and Limit	13
4.2. Test Setup	14
4.3. Test Procedure	15
4.4. Test Data	15
5. 20DB Occupy Bandwidth Test.....	22
5.1. Test Standard and Limit	22
5.2. Test Setup	22
5.3. Test Procedure	22
5.4. Test Data	22
6. Dwell Time Test	24
6.1. Test Standard and Limit	24
6.2. Test Setup	24
6.3. Test Procedure	24
6.4. Test Data	24
7. Antenna Requirement.....	26
7.1. Test Standard and Requirement.....	26
7.2. Antenna Connected Construction.....	26
APPENDIX I -- TEST SETUP PHOTOGRAPH.....	27
APPENDIX II -- EXTERNAL PHOTOGRAPH	29
APPENDIX III -- INTERNAL PHOTOGRAPH	32

TEST REPORT

Applicant : Shenzhen Intellirocks Tech. Co., Ltd.
Manufacturer : Shenzhen Intellirocks Tech. Co., Ltd.
Product Name : Motion Sensor
Model No. : H5024
Trade Mark : N.A.
Rating(s) : Input: DC 4.5V "AAA"

Test Standard(s) : **FCC Part15 Subpart C 2018, Section 15.231**
Test Method(s) : **ANSI C63.10: 2013**

The device described above is tested by Shenzhen Anbotek Compliance Laboratory Limited to determine the maximum emission levels emanating from the device and the severe levels of the device can endure and its performance criterion. The measurement results are contained in this test report and Shenzhen Anbotek Compliance Laboratory Limited is assumed full of responsibility for the accuracy and completeness of these measurements. Also, this report shows that the EUT (Equipment Under Test) is technically compliant with the FCC Part 15 Subpart C requirements.

This report applies to above tested sample only and shall not be reproduced in part without written approval of Shenzhen Anbotek Compliance Laboratory Limited.

Date of Receipt

Nov. 26, 2019

Date of Test

Nov. 26~Dec. 10, 2019

Prepared By



Dolly mo

(Engineer / Dolly Mo)

Reviewer

Bibo Zhang

(Supervisor / Bibo Zhang)

Approved & Authorized Signer

Tom Chen

(Manager / Tom Chen)

1. General Information

1.1. Client Information

Applicant	:	Shenzhen Intellirocks Tech. Co., Ltd.
Address	:	Room 401 Building 9, YunGu phase II, Nanshan, Liuxian Avenue, Taoyuan Street, Nanshan District, Shenzhen, China
Manufacturer	:	Shenzhen Intellirocks Tech. Co., Ltd.
Address	:	Room 401 Building 9, YunGu phase II, Nanshan, Liuxian Avenue, Taoyuan Street, Nanshan District, Shenzhen, China
Factory	:	Shenzhen Intellirocks Tech. Co., Ltd.
Address	:	Room 401 Building 9, YunGu phase II, Nanshan, Liuxian Avenue, Taoyuan Street, Nanshan District, Shenzhen, China

1.2. Description of Device (EUT)

Product Name	:	Motion Sensor
Model No.	:	H5024
Trade Mark	:	N.A.
Test Power Supply	:	AC 120V, 60Hz for adapter / DC 4.5V battery inside
Product Description	Operation Frequency:	433.92MHz
	Number of Channel:	1 Channels
	Modulation Type:	ASK
	Antenna Type:	Monopole Antenna
	Antenna Gain(Peak):	0 dBi
Remark: 1) For a more detailed features description, please refer to the manufacturer's specifications or the User's Manual.		

1.3. Auxiliary Equipment Used During Test

Adapter	:	Manufacturer: ZTE
		M/N: STC-A205011000USBA-C
		S/N: 201202102100876
		Input: 100-240V~ 50/60Hz, 0.3A
		Output: DC 5V, 1000mA

1.4. Description of Test Modes

To investigate the maximum EMI emission characteristics generates from EUT, the test system was pre-scanning tested base on the consideration of following EUT operation mode or test configuration mode which possible have effect on EMI emission level. Each of these EUT operation mode(s) or test configuration mode(s) mentioned above was evaluated respectively.

Pretest Mode	Description
Mode 1	TX Mode

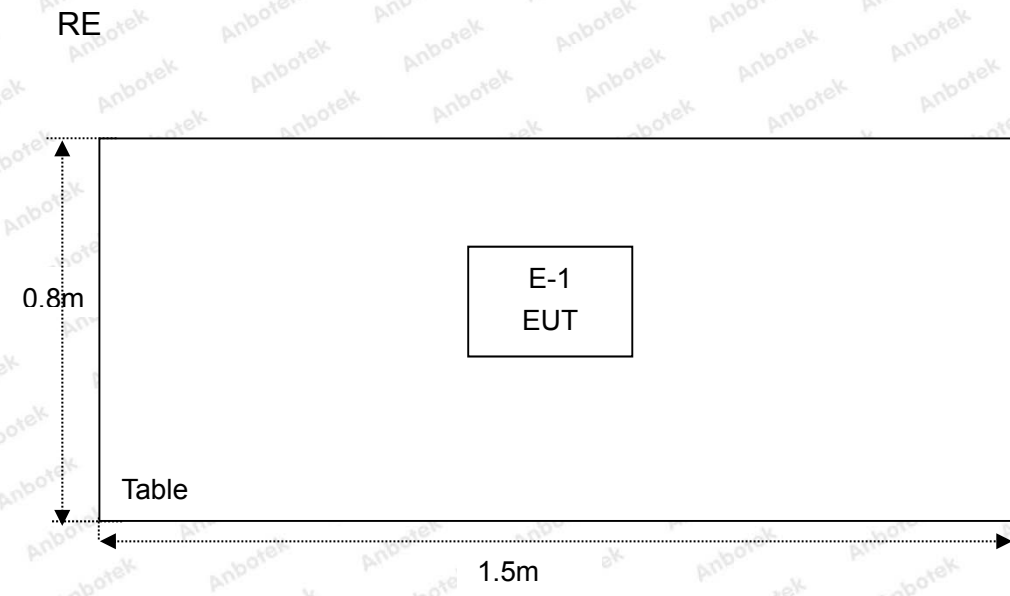
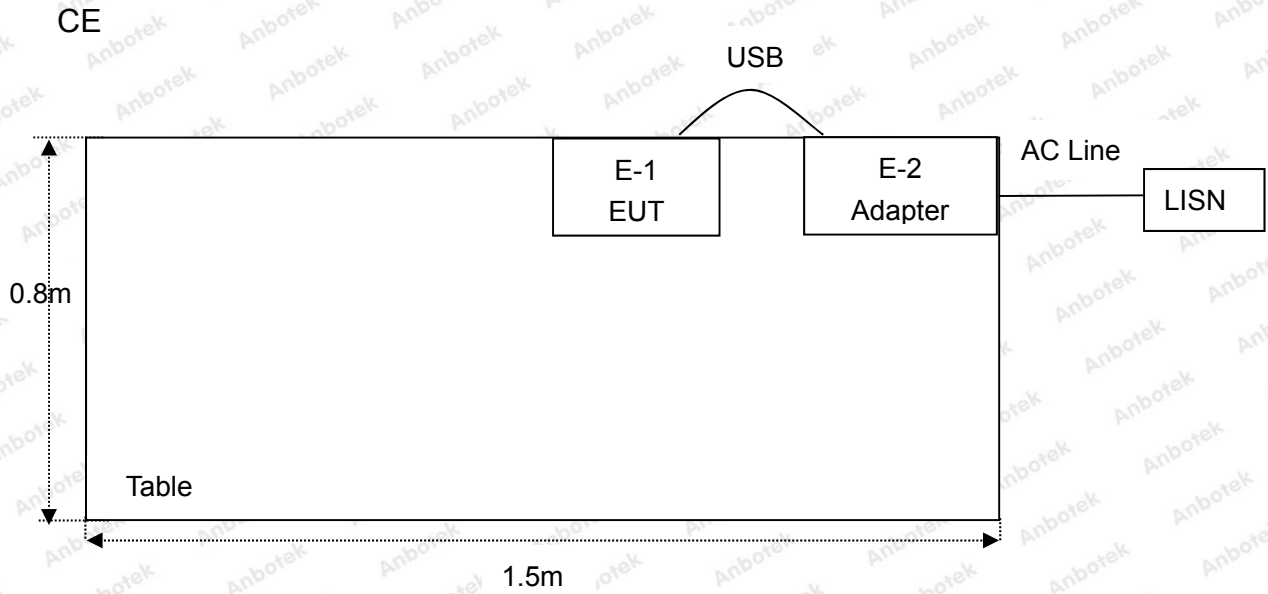
For Radiated Emission	
Final Test Mode	Description
Mode 1	TX Mode

Note: During the test, the EUT was keeping continuous transmission.

1.5. List of channels

Channel	Freq. (MHz)	Note (Modulation Type)
01	433.92	ASK

1.6. Description Of Test Setup



1.7. Test Equipment List

Item	Equipment	Manufacturer	Model No.	Serial No.	Last Cal.	Cal. Interval
1.	L.I.S.N. Artificial Mains Network	Rohde & Schwarz	ENV216	100055	Nov. 04, 2019	1 Year
2.	EMI Test Receiver	Rohde & Schwarz	ESPI3	101604	Nov. 04, 2019	1 Year
3.	RF Switching Unit	Compliance Direction	RSU-M2	38303	Nov. 04, 2019	1 Year
4.	MAX Spectrum Analysis	Agilent	N9020A	MY51170037	Nov. 04, 2019	1 Year
5.	Preamplifier	SKET Electronic	BK1G18G30 D	KD17503	Nov. 04, 2019	1 Year
6.	Double Ridged Horn Antenna	Instruments corporation	GTH-0118	351600	Nov. 01, 2019	1 Year
7.	Bilog Broadband Antenna	Schwarzbeck	VULB9163	VULB 9163-289	Nov. 01, 2019	1 Year
8.	Loop Antenna	Schwarzbeck	FMZB1519B	00053	Nov. 01, 2019	1 Year
9.	Horn Antenna	A-INFO	LB-180400- KF	J211060628	Nov. 01, 2019	1 Year
10.	Pre-amplifier	SONOMA	310N	186860	Nov. 04, 2019	1 Year
11.	EMI Test Software EZ-EMC	SHURPLE	N/A	N/A	N/A	N/A
12.	RF Test Control System	YIHENG	YH3000	2017430	Nov. 04, 2019	1 Year
13.	Power Sensor	DAER	RPR3006W	15I00041SN045	Nov. 04, 2019	1 Year
14.	Power Sensor	DAER	RPR3006W	15I00041SN046	Nov. 04, 2019	1 Year
15.	MXA Spectrum Analysis	Agilent	N9020A	MY51170037	Nov. 04, 2019	1 Year
16.	MXG RF Vector Signal Generator	Agilent	N5182A	MY48180656	Nov. 04, 2019	1 Year
17.	Signal Generator	Agilent	E4421B	MY41000743	Nov. 04, 2019	1 Year
18.	DC Power Supply	LW	TPR-6420D	374470	Nov. 04, 2019	1 Year
19.	Constant Temperature Humidity Chamber	ZHONGJIAN	ZJ- KHWS80B	N/A	Nov. 04, 2019	1 Year

1.8. Measurement Uncertainty

Radiation Uncertainty	:	Ur = 3.9 dB (Horizontal)
		Ur = 3.8 dB (Vertical)
Conduction Uncertainty	:	Uc = 3.4 dB

1.9. Description of Test Facility

The test facility is recognized, certified, or accredited by the following organizations:

FCC-Registration No.: 184111

Shenzhen Anbotek Compliance Laboratory Limited, EMC Laboratory has been registered and fully described in a report filed with the (FCC) Federal Communications Commission. The acceptance letter from the FCC is maintained in our files. Registration No. 184111, September 27, 2019.

ISED-Registration No.: 8058A

Shenzhen Anbotek Compliance Laboratory Limited, EMC Laboratory has been registered and fully described in a report filed with the (ISED) Innovation, Science and Economic Development Canada. The acceptance letter from the ISED is maintained in our files. Registration 8058A, March 07, 2019.

Test Location

Shenzhen Anbotek Compliance Laboratory Limited.

1/F, Building D, Sogood Science and Technology Park, Sanwei community, Hangcheng Street, Bao'an District, Shenzhen, Guangdong, China.518102

2. Summary of Test Results

Standard Section	Test Item	Result
15.203	Antenna Requirement	PASS
15.207	Conducted Emission	PASS
15.205/15.209/15.231(b)	Spurious Emission	PASS
15.231(c)	20dB Occupied Bandwidth	PASS
15.231(a)	Dwell time	PASS
Remark: "N/A" is an abbreviation for Not Applicable.		



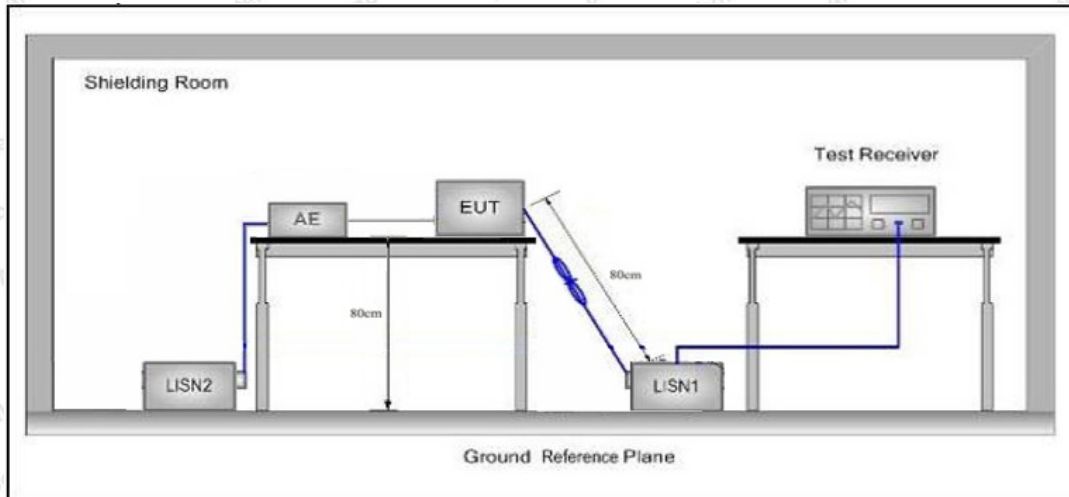
3. Conducted Emission Test

3.1. Test Standard and Limit

Test Standard	FCC Part15 Section 15.207		
Test Limit	Frequency	Maximum RF Line Voltage (dBuV)	
		Quasi-peak Level	Average Level
	150kHz~500kHz	66 ~ 56 *	56 ~ 46 *
	500kHz~5MHz	56	46
5MHz~30MHz	60	50	

Remark: (1) *Decreasing linearly with logarithm of the frequency.
 (2) The lower limit shall apply at the transition frequency.

3.2. Test Setup



3.3. Test Procedure

The EUT system is connected to the power mains through a line impedance stabilization network (L.I.S.N.). This provides a 50ohm coupling impedance for the EUT system. Please refer the block diagram of the test setup and photographs. Both sides of AC line are checked to find out the maximum conducted emission. In order to find the maximum emission levels, the relative positions of equipment and all of the interface cables shall be changed according to FCC ANSI C63.10-2013 on Conducted Emission Measurement.

The bandwidth of test receiver (ESCI) set at 9kHz.

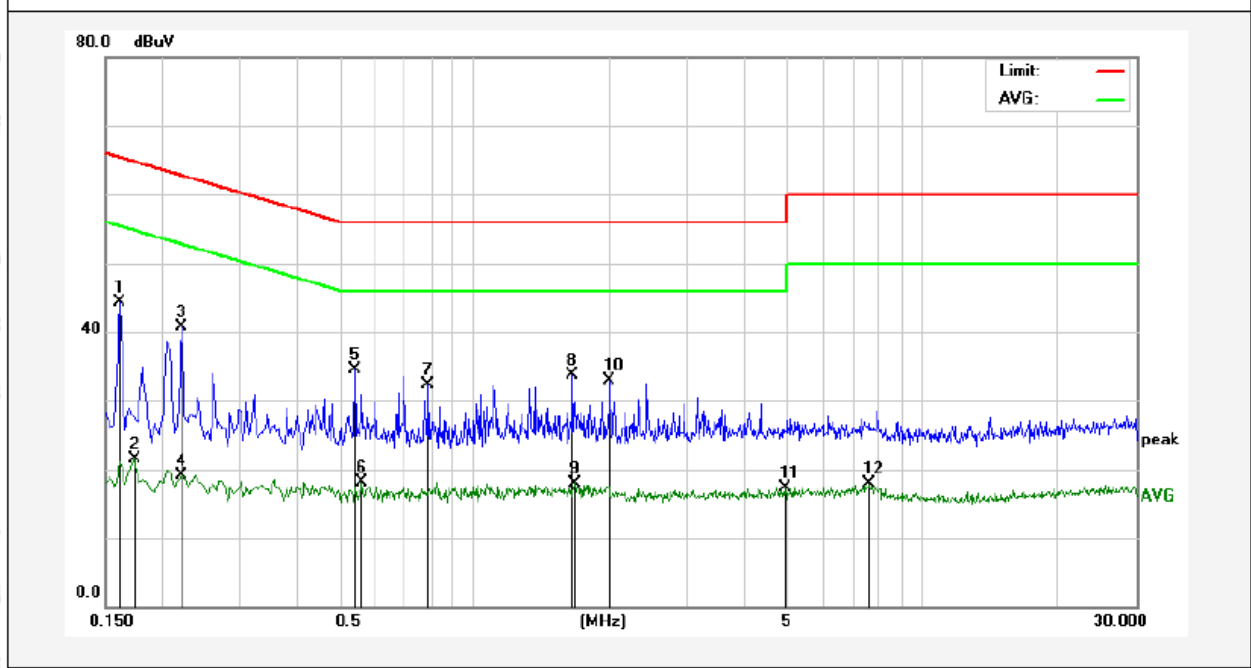
The frequency range from 150kHz to 30MHz is checked.

3.4. Test Data

Please to see the following pages.

Conducted Emission Test Data

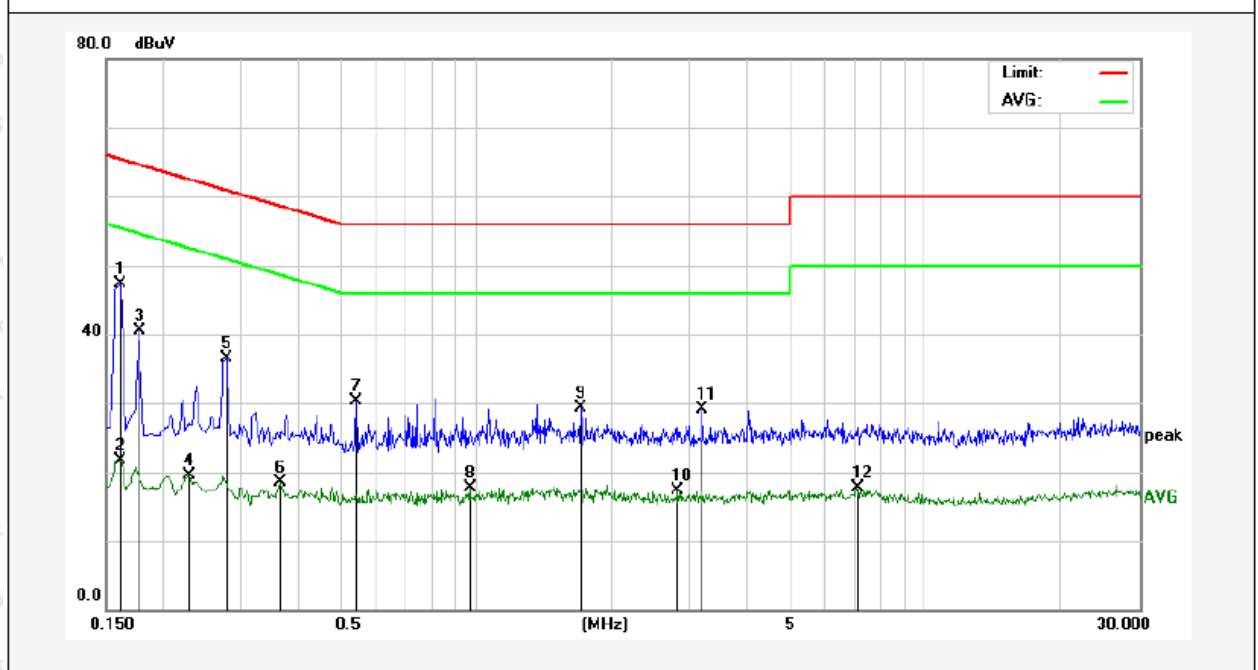
Test Site: 1# Shielded Room
 Operating Condition: Mode 1
 Test Specification: AC 120V, 60Hz for adapter
 Comment: Live Line
 Tem.: 23.2°C Hum.: 52%



No.	Freq. (MHz)	Reading (dBuV)	Factor (dB)	Result (dBuV)	Limit (dBuV)	Over Limit (dB)	Detector	Remark
1	0.1620	24.43	19.90	44.33	65.36	-21.03	QP	
2	0.1740	1.64	19.90	21.54	54.76	-33.22	AVG	
3	0.2220	20.75	19.90	40.65	62.74	-22.09	QP	
4	0.2220	-0.75	19.90	19.15	52.74	-33.59	AVG	
5	0.5420	14.46	19.99	34.45	56.00	-21.55	QP	
6	0.5620	-1.85	20.00	18.15	46.00	-27.85	AVG	
7	0.7900	12.29	20.06	32.35	56.00	-23.65	QP	
8	1.6580	13.57	20.13	33.70	56.00	-22.30	QP	
9	1.6740	-2.13	20.13	18.00	46.00	-28.00	AVG	
10	2.0059	12.68	20.14	32.82	56.00	-23.18	QP	
11	4.9340	-2.97	20.20	17.23	46.00	-28.77	AVG	
12	7.6220	-2.46	20.28	17.82	50.00	-32.18	AVG	

Conducted Emission Test Data

Test Site: 1# Shielded Room
 Operating Condition: Mode 1
 Test Specification: AC 120V, 60Hz for adapter
 Comment: Neutral Line
 Tem.: 23.2°C Hum.: 52%



No.	Freq. (MHz)	Reading (dBuV)	Factor (dB)	Result (dBuV)	Limit (dBuV)	Over Limit (dB)	Detector	Remark
1	0.1620	27.45	19.90	47.35	65.36	-18.01	QP	
2	0.1620	1.77	19.90	21.67	55.36	-33.69	AVG	
3	0.1780	20.66	19.90	40.56	64.57	-24.01	QP	
4	0.2300	-0.41	19.89	19.48	52.45	-32.97	AVG	
5	0.2779	16.68	19.89	36.57	60.88	-24.31	QP	
6	0.3660	-1.45	19.92	18.47	48.59	-30.12	AVG	
7	0.5420	10.28	19.99	30.27	56.00	-25.73	QP	
8	0.9700	-2.46	20.11	17.65	46.00	-28.35	AVG	
9	1.7140	9.17	20.13	29.30	56.00	-26.70	QP	
10	2.8220	-2.95	20.16	17.21	46.00	-28.79	AVG	
11	3.2060	8.94	20.16	29.10	56.00	-26.90	QP	
12	7.0500	-2.51	20.26	17.75	50.00	-32.25	AVG	

4. Radiation Spurious Emission and Band Edge

4.1. Test Standard and Limit

Test Standard	FCC Part15 C Section 15.209, 15.205 and 15.231(b)					
Test Limit	Frequency (MHz)	Field strength (microvolt/meter)	Limit (dBuV/m)	Remark	Measurement distance (m)	
	0.009MHz~0.490MHz	2400/F(kHz)	-	-	300	
	0.490MHz-1.705MHz	24000/F(kHz)	-	-	30	
	1.705MHz-30MHz	30	-	-	30	
	30MHz~88MHz	100	40.0	Quasi-peak	3	
	88MHz~216MHz	150	43.5	Quasi-peak	3	
	216MHz~960MHz	200	46.0	Quasi-peak	3	
	960MHz~1000MHz	500	54.0	Quasi-peak	3	
	Above 1000MHz		500	54.0	Average	3
			-	74.0	Peak	3

Remark:
 (1)The lower limit shall apply at the transition frequency.
 (2) 15.35(b), Unless otherwise specified, the limit on peak radio frequency emissions is 20dB above the maximum permitted average emission limit applicable to the equipment under test. This peak limit applies to the total peak emission level radiated by the device.

the formulas for calculating the maximum permitted fundamental field strengths are as follows:
 for the band 260-470 MHz, $\mu\text{V/m}$ at 3 meters = $41.6667(F) - 7083.3333$.

The maximum permitted unwanted emission level is 20 dB below the maximum permitted fundamental level

$$\text{Emission Level (dBuV/m)} = 20 \log \text{Emission Level}(\mu\text{V/m})$$

The field strength of emission limits have been calculated in below table:

Fundamental Frequency (MHz)	Field Strength of Fundamental (dBuV/m)@3m
433.92	80.82 (AVG)
433.92	100.82 (Peak)

4.2. Test Setup

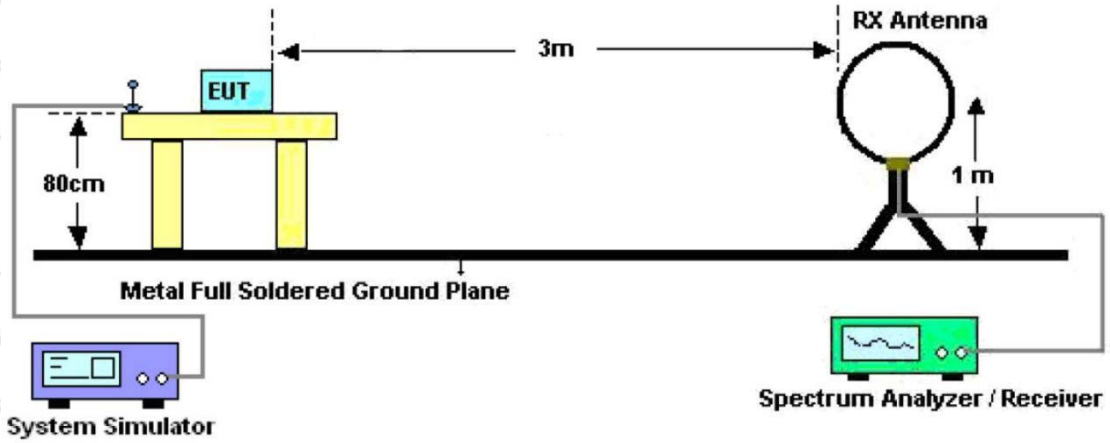


Figure 1. Below 30MHz

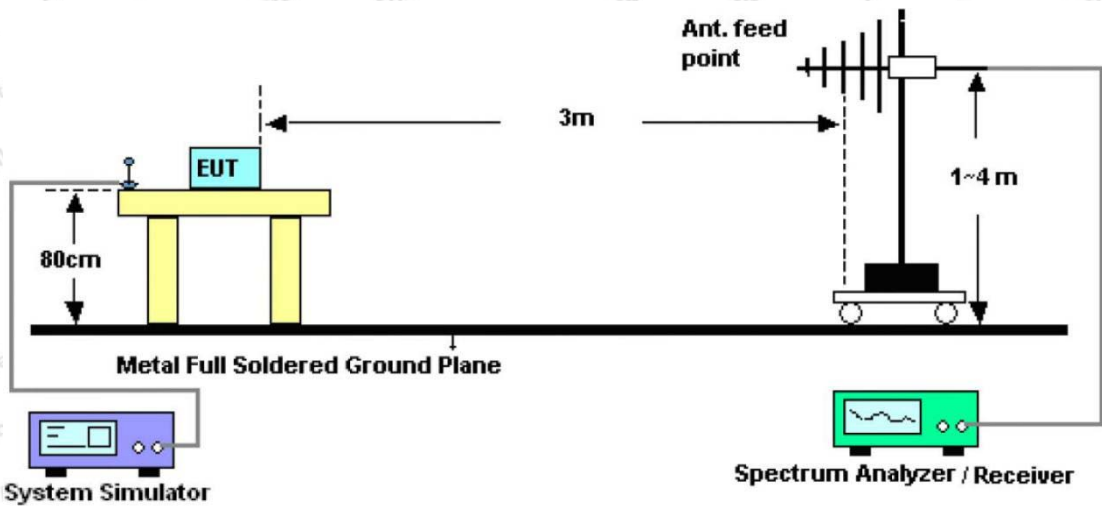


Figure 2. 30MHz to 1GHz

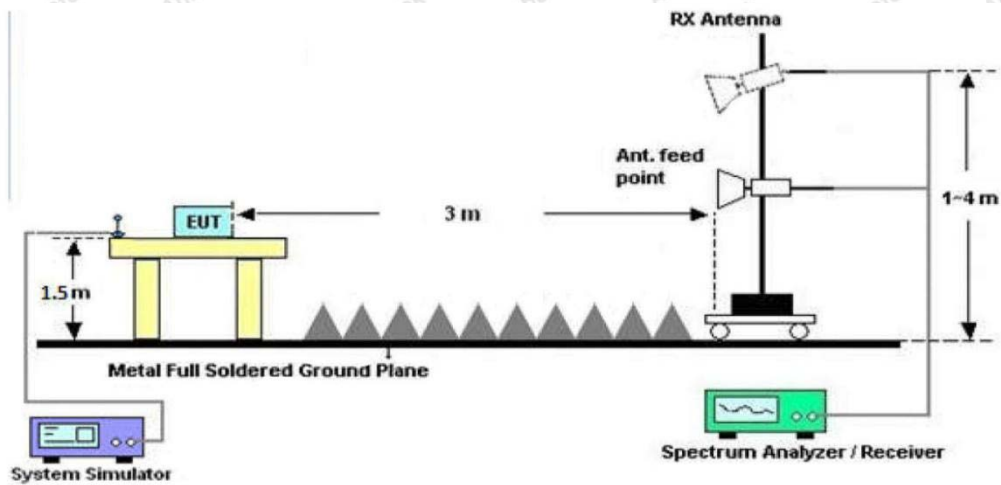


Figure 3. Above 1 GHz

4.3. Test Procedure

For below 1GHz: The EUT is placed on a turntable, which is 0.8m above the ground plane.

For above 1GHz: The EUT is placed on a turntable, which is 1.5m above the ground plane.

The turn table can rotate 360 degrees to determine the position of the maximum emission level. The EUT is set 3 meters away from the receiving antenna which is mounted on a antenna tower. The antenna can be moved up and down from 1 to 4 meters to find out the maximum emission level. Rotated the EUT through three orthogonal axes to determine the maximum emissions, both horizontal and vertical polarization of the antenna are set on test. The EUT is tested in 9*6*6 Chamber. The device is evaluated in xyz orientation.

For 9kHz to 150kHz, Set the spectrum analyzer as:

RBW = 200Hz, VBW =1kHz, Detector= Quasi-Peak, Trace mode= Max hold, Sweep- auto couple.

For 150kHz to 30MHz, Set the spectrum analyzer as:

RBW = 9KHz, VBW =30kHz, Detector= Quasi-Peak, Trace mode= Max hold, Sweep- auto couple.

For 30MHz to 1000MHz, Set the spectrum analyzer as:

RBW = 100kHz, VBW =300kHz, Detector= Quasi-Peak, Trace mode= Max hold, Sweep- auto couple.

For above 1GHz, Set the spectrum analyzer as:

RBW =1MHz, VBW =1MHz, Detector= Peak, Trace mode= Max hold, Sweep- auto couple.

RBW =1MHz, VBW =10Hz, Detector= Average, Trace mode= Max hold, Sweep- auto couple.

4.4. Test Data

PASS

During the test, Pre-scan all kind of the place mode (X-axis, Y-axis, Z-axis), and found the X-axis is the worst case.

The test results of 9kHz-30MHz and above 18000MHz are attenuated more than 20dB below the permissible limits, so the results don't record in the report.



Test Results (Fundamental 433.92MHz)

Frequency	Antenna	Reading	Cable Loss	Ant Factor	Amplifier	Duty cycle Factor	Results	Limits	Det.
(MHz)	Pol.	(dBuV/m)	(dB)	(dB)	(dB)	(dB)	(dBuV/m)	(dBuV/m)	Mode
433.92	H	94.98	1.52	12.64	31.45	-	77.69	100.82	PK
433.92	H	94.98	1.52	12.64	31.45	-7.58	70.11	80.82	AV
433.92	V	97.34	1.52	12.64	31.45	-	80.05	100.82	PK
433.92	V	97.34	1.52	12.64	31.45	-7.58	72.47	80.82	AV

Remark:

1. Result = Reading + Cable Loss +Ant Factor –Amplifier + Duty cycle Factor

2. Pulse Desensitization Correction Factor

Pulse Width (PW)= 0.284ms

2/PW=2/0.284=7.04kHz

RBW(1000kHz)> 2/PW (7.04KHz)

Therefore PDCF is not needed.

3. Duty Cycle Factor

Calculate Formula:

AV=PEAK +Duty Cycle Factor

Duty Cycle Factor=20log(Duty Cycle)

Duty Cycle= on time/ period

Test Data:

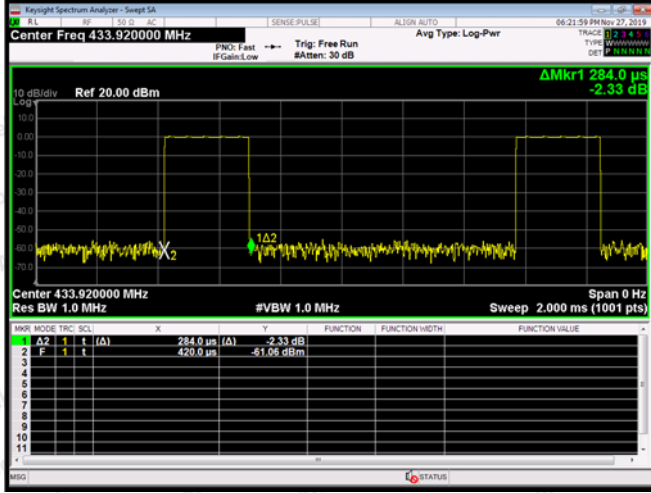
T on time=0.878ms*21+0.284ms*28=26.39 ms

T period=63.15ms

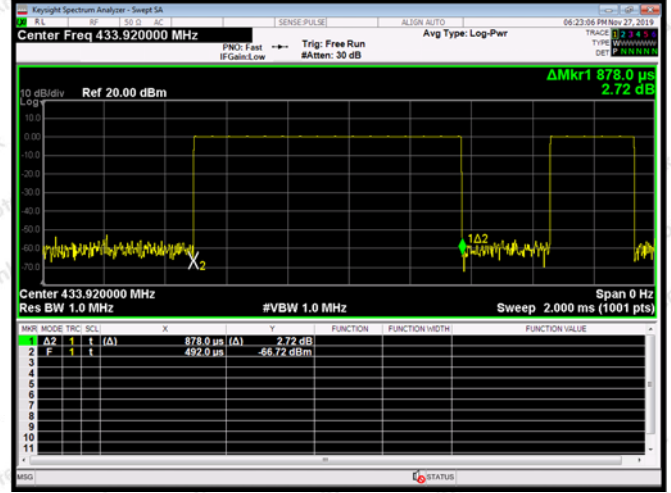
Duty Cycle=41.79%

Duty Cycle Factor =20log(Duty Cycle)=-7.58

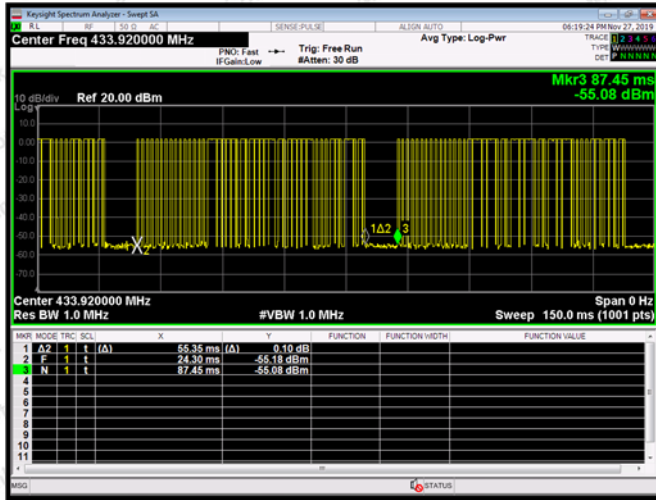
T on time slot-1



T on time slot-2



T period



Test Results (Harmonics Emissions)

Frequency	Antenna	Reading	Cable Loss	Ant Factor	Amplifier	Duty cycle Factor	Results	Limits	Det
(MHz)	Pol.	(dBuV/m)	(dB)	(dB)	(dB)	(dB)	(dBuV/m)	(dBuV/m)	Mode
867.84	H	74.43	1.92	12.71	31.72	-	57.34	80.82	PK
867.84	H	74.43	1.92	12.71	31.72	-7.58	49.76	60.82	AV
867.84	V	76.34	1.92	12.71	31.72	-	59.25	80.82	PK
867.84	V	76.34	1.92	12.71	31.72	-7.58	51.67	60.82	AV
1301.76	H	63.97	2.38	21.43	32.45	-	55.33	74	PK
1301.76	H	63.97	2.38	21.43	32.45	-7.58	47.75	54	AV
1301.76	V	65.43	2.38	18.56	32.45	-	53.92	74	PK
1301.76	V	65.43	2.38	18.56	32.45	-7.58	46.34	54	AV

Remark :

1. Result = Reading + Cable Loss +Ant Factor –Amplifier + Duty cycle Factor

2. Pulse Desensitization Correction Factor

Pulse Width (PW)= 0.284ms

$2/PW=2/0.284=7.04kHz$

$RBW(1000kHz) > 2/PW (7.04kHz)$

Therefore PDCF is not needed.

3. Duty Cycle Factor=-7.58

Test Results (Radiated Emission)

Frequency	Antenna	Reading	Cable Loss	Ant Factor	Amplifier	Results	Limits	Margin	Det.
(MHz)	Pol.	(dBuV/m)	(dB)	(dB)	(dB)	(dBuV/m)	(dBuV/m)	(dB)	Mode
54.84	H	56.71	1.03	11.15	40.74	28.15	40	-11.85	QP
127.01	H	59.34	1.24	12.24	40.48	32.34	43.5	-11.16	QP
732.84	H	61.64	1.67	13.75	41.27	35.79	46	-10.21	QP
54.84	V	55.94	1.03	11.15	40.74	27.38	40	-12.62	QP
127.01	V	60.93	1.24	12.24	40.48	33.93	43.5	-9.57	QP
732.84	V	62.78	1.67	13.75	41.27	36.93	46	-9.07	QP

Remark:

1. Results = Reading + Cable Loss +Ant Factor –Amplifier

Test Results (30~1000MHz)

Job No.: SZAWW191126010-01

Temp.(°C)/Hum.(%RH): 23°C/54%RH

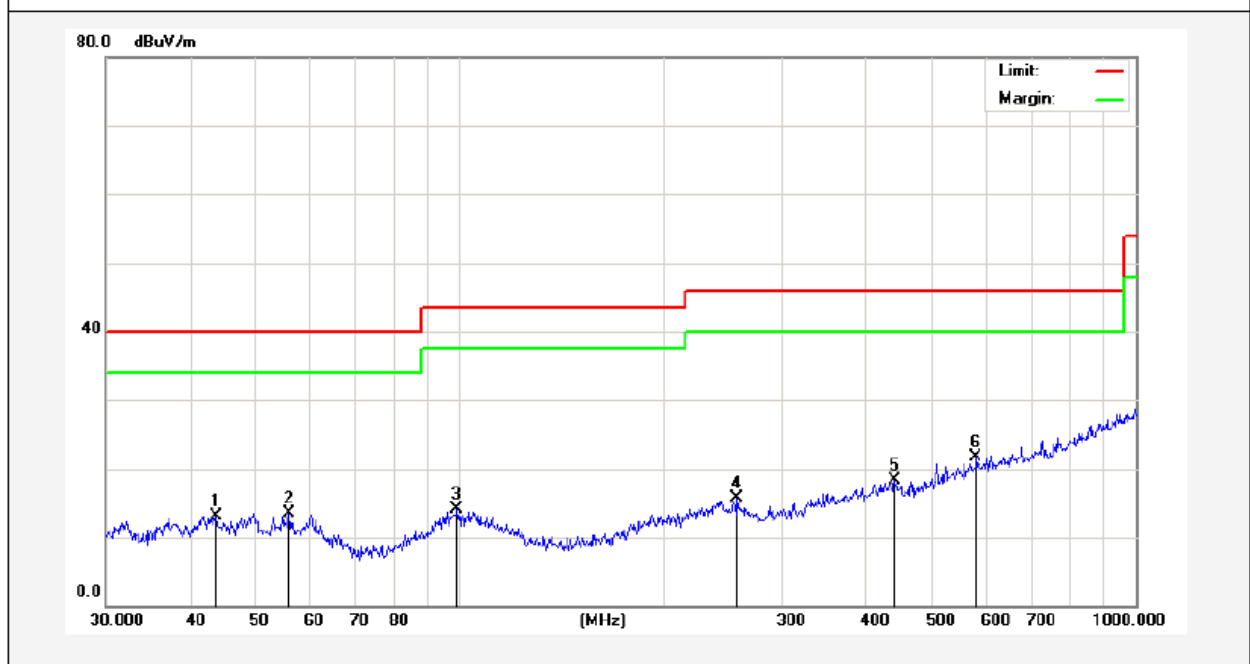
Standard: FCC PART 15C

Power Source: DC 4.5V battery inside

Test Mode: TX Mode

Polarization: Horizontal

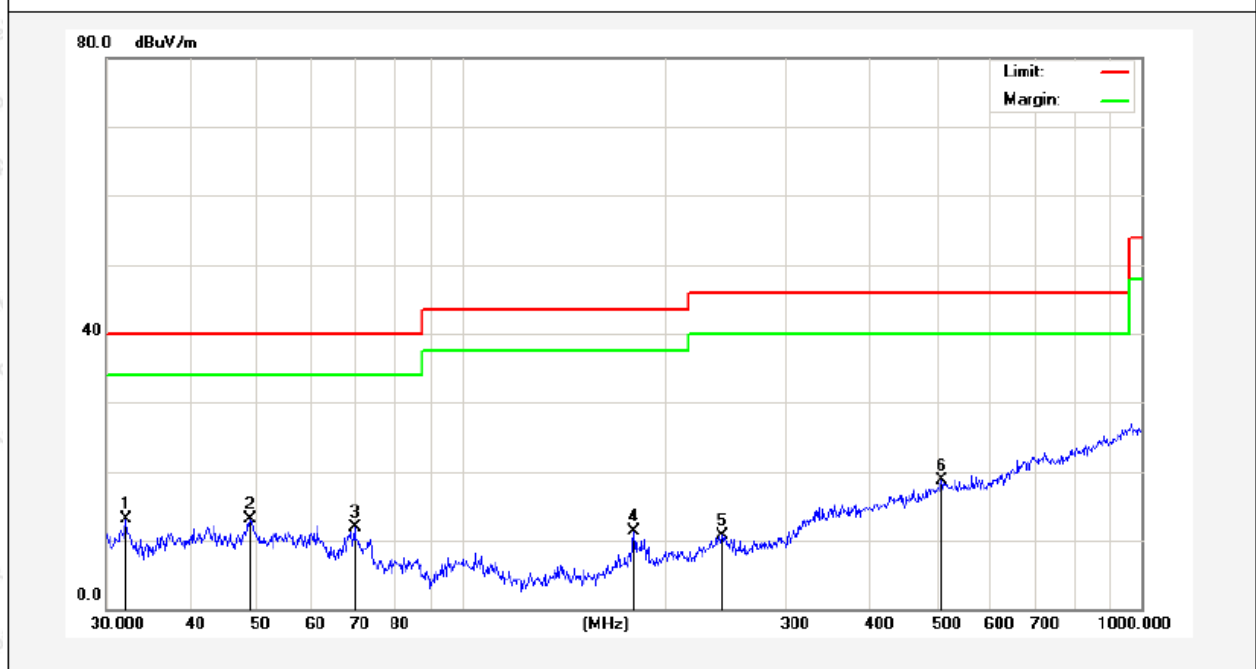
Note:



No.	Freq. (MHz)	Reading (dBuV)	Factor (dB/m)	Result (dBuV/m)	Limit (dBuV/m)	Over Limit (dB)	Detector	Height (cm)	degree (deg)	Remark
1	43.6584	30.98	-17.79	13.19	40.00	-26.81	QP	100	360	
2	56.0007	31.83	-18.26	13.57	40.00	-26.43	QP	100	3	
3	99.1797	36.70	-22.59	14.11	43.50	-29.39	QP	100	360	
4	257.4222	36.57	-20.95	15.62	46.00	-30.38	QP	100	0	
5	440.1963	32.80	-14.51	18.29	46.00	-27.71	QP	100	360	
6	580.7026	34.70	-12.90	21.80	46.00	-24.20	QP	100	0	

Test Results (30~1000MHz)

Job No.: SZAWW191126010-01 Temp.(°C)/Hum.(%RH): 23°C/54%RH
 Standard: FCC PART 15C Power Source: DC 4.5V battery inside
 Test Mode: TX Mode Polarization: Vertical
 Note:



No.	Freq. (MHz)	Reading (dBuV)	Factor (dB/m)	Result (dBuV/m)	Limit (dBuV/m)	Over Limit (dB)	Detector	Height (cm)	degree (deg)	Remark
1	32.0667	31.26	-18.23	13.03	40.00	-26.97	QP	100	0	
2	48.8429	30.04	-17.03	13.01	40.00	-26.99	QP	100	360	
3	69.6005	33.27	-21.28	11.99	40.00	-28.01	QP	100	0	
4	179.3863	30.60	-19.21	11.39	43.50	-32.11	QP	100	360	
5	241.6763	26.95	-16.18	10.77	46.00	-35.23	QP	100	0	
6	508.2582	31.65	-12.89	18.76	46.00	-27.24	QP	100	360	

Remark:

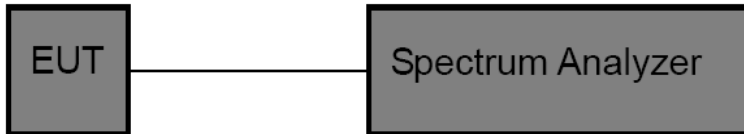
1. Results = Reading + Cable Loss +Ant Factor –Amplifier

5. 20DB Occupy Bandwidth Test

5.1. Test Standard and Limit

Test Standard	FCC Part15 C Section 15.231 (c)				
Test Limit	According to FCC Part 15.231(c), The bandwidth of the emission shall be no wider than 0.25% of the center frequency for devices operating above 70MHz and below 900MHz. For devices operating above 900MHz, the emission shall be no wider than 0.5% of the center frequency. Bandwidth is determined at the points 20dB down from the modulated carrier.				
	So the emission bandwidth limits have been calculated in below table:				
	<table border="1"> <thead> <tr> <th>Fundamental Frequency</th> <th>Limit of 20dB Bandwidth</th> </tr> </thead> <tbody> <tr> <td>433.92 MHz</td> <td>433920x0.0025=1084.80 kHz</td> </tr> </tbody> </table>	Fundamental Frequency	Limit of 20dB Bandwidth	433.92 MHz	433920x0.0025=1084.80 kHz
Fundamental Frequency	Limit of 20dB Bandwidth				
433.92 MHz	433920x0.0025=1084.80 kHz				

5.2. Test Setup



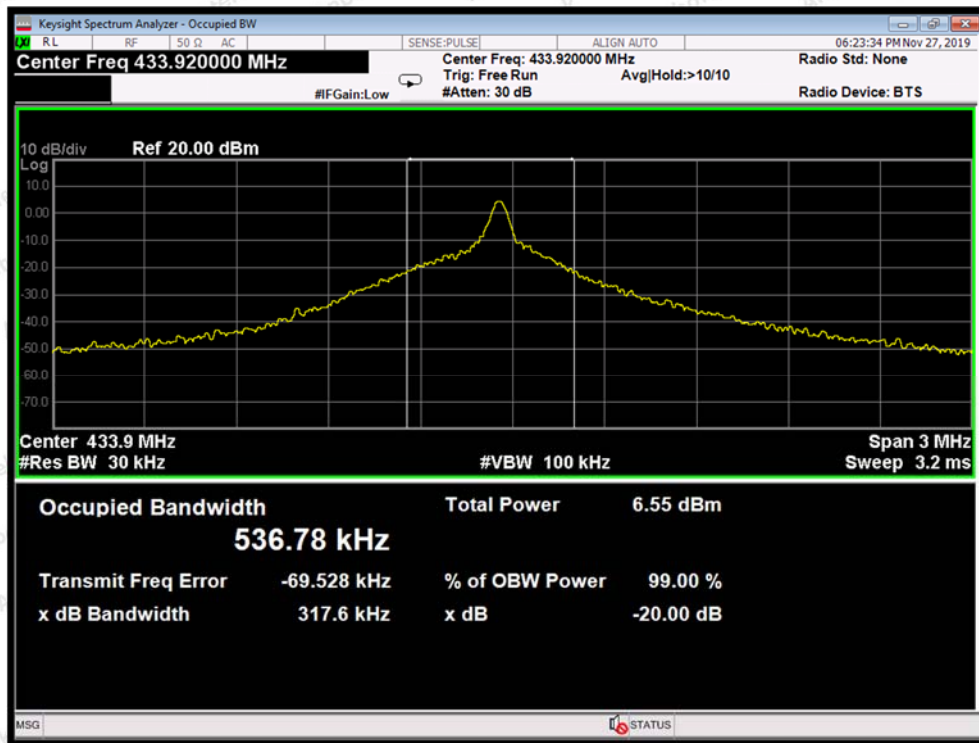
5.3. Test Procedure

1. Place the EUT on the table and set it in the continuously transmitting mode.
2. Remove the antenna from the EUT and then connect a low loss RF cable from the antenna port to the spectrum analyzer.
3. Set the spectrum analyzer as:
 RBW = 100kHz, VBW≥3*RBW =300kHz,
 Span= 2MHz
 Detector= Peak
 Trace mode= Max hold.
 Sweep- auto couple.
4. Mark the peak frequency and -20dB (upper and lower) frequency.
5. Repeat until all the rest channels are investigated.

5.4. Test Data

Test Item	: 20dB Bandwidth	Test Mode	: Continuously transmitting
Test Voltage	: DC 4.5V battery inside	Temperature	: 24°C
Test Result	: PASS	Humidity	: 55%RH

Freq. (MHz)	Modulation Type	Bandwidth (kHz)	Limit (kHz)	Results
433.92	ASK	317.6	<1084.80	PASS



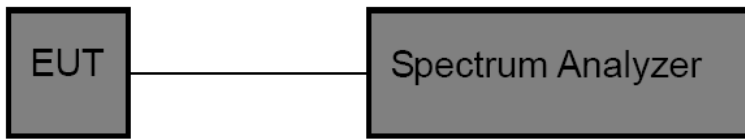
433.92MHz

6. Dwell Time Test

6.1. Test Standard and Limit

Test Standard	FCC Part 15.231(a)(1)
Test Limit	According to FCC Part 15.231(a)(1), A manually operated transmitter shall employ a switch that will automatically deactivate the transmitter within not more than 5 seconds of being released

6.2. Test Setup



6.3. Test Procedure

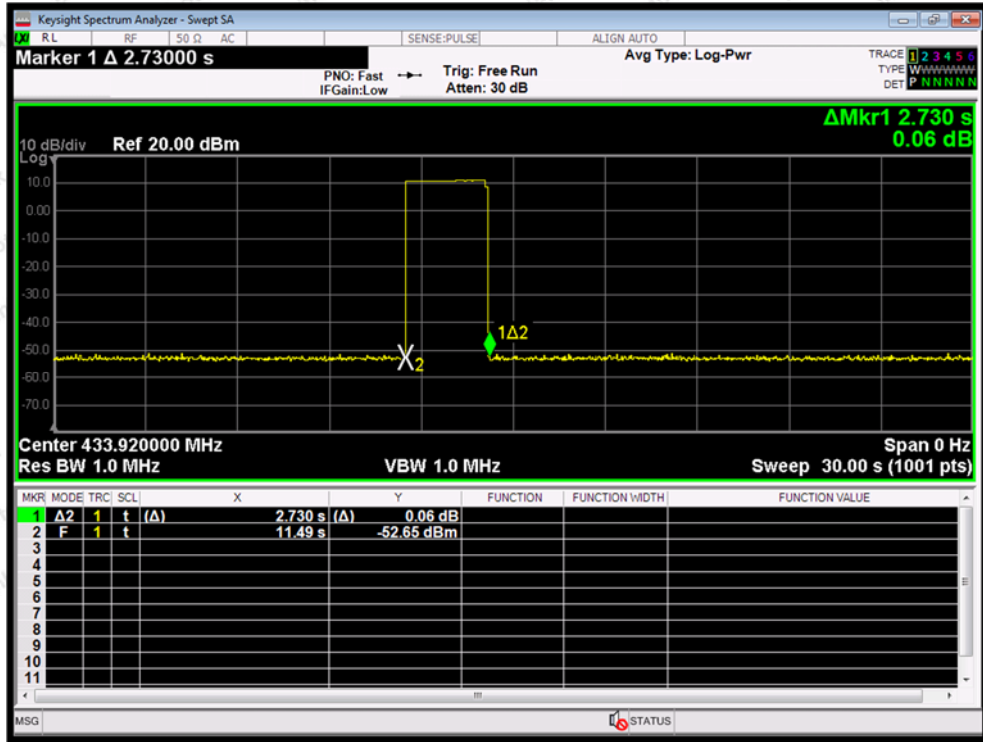
1. Place the EUT on the table and set it in continuously transmitting mode. Remove the antenna from the EUT and then connect a low loss RF cable from the antenna port to the spectrum analyzer.
2. Set the spectrum analyzer as
RBW=1000kHz, VBW= 1000 kHz, Span= 0Hz, Sweep Time= 20 Seconds.
3. Record the Delta mark time.

6.4. Test Data

Test Item	: Dwell Time	Test Mode	: Continuously transmitting
Test Voltage	: DC 4.5V battery inside	Temperature	: 24°C
Test Result	: PASS	Humidity	: 55%RH

Test Mode	Transmitting time(s)	Limit(s)	Result
ASK mode	2.730	≤5	PASS

Please refer the following plot.



Dwell Time

7. Antenna Requirement

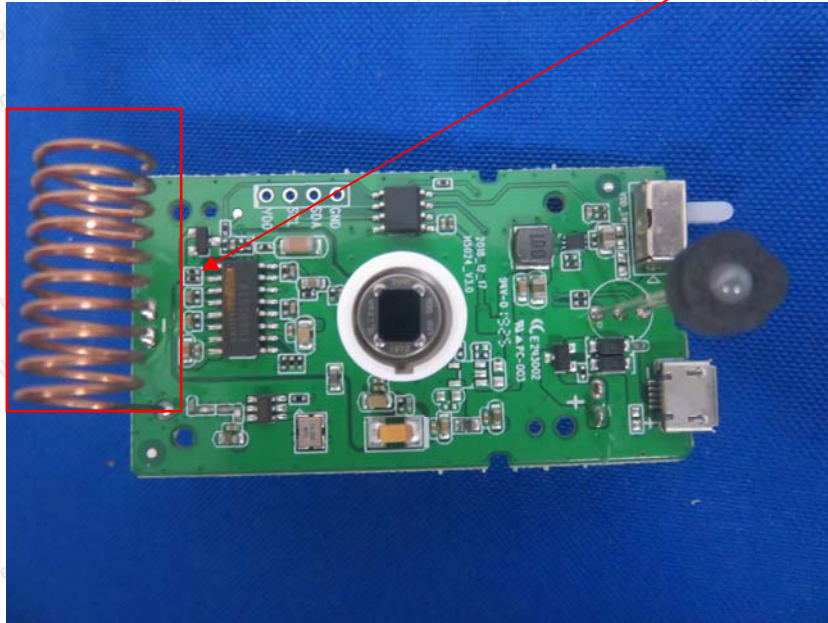
7.1. Test Standard and Requirement

Test Standard	FCC Part15 Section 15.203
Requirement	<p>1) 15.203 requirement: An intentional radiator shall be designed to ensure that no antenna other than that furnished by the responsible party shall be used with the device.</p> <p>Antenna requirement must meet at least one of the following:</p> <ol style="list-style-type: none"> 1) Antenna must be permanently attached to device. 2) The antenna must use a unique type of connector to attach to the device. 3) Device must be professionally installed. The installer shall be responsible for ensuring that the correct antenna is employed by the device.

7.2. Antenna Connected Construction

The antenna is a Monopole antenna which permanently attached, and the best case gain of the antenna is 0 dBi. It complies with the standard requirement.

Monopole Antenna



APPENDIX I -- TEST SETUP PHOTOGRAPH

Photo of Power Line Conducted Emission Test

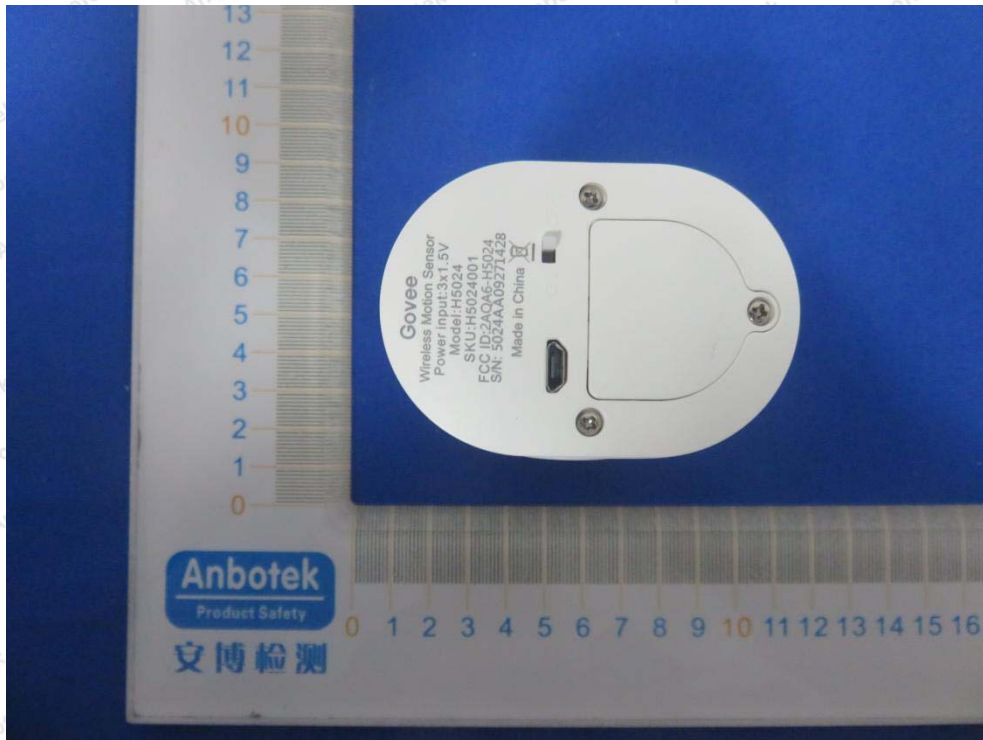
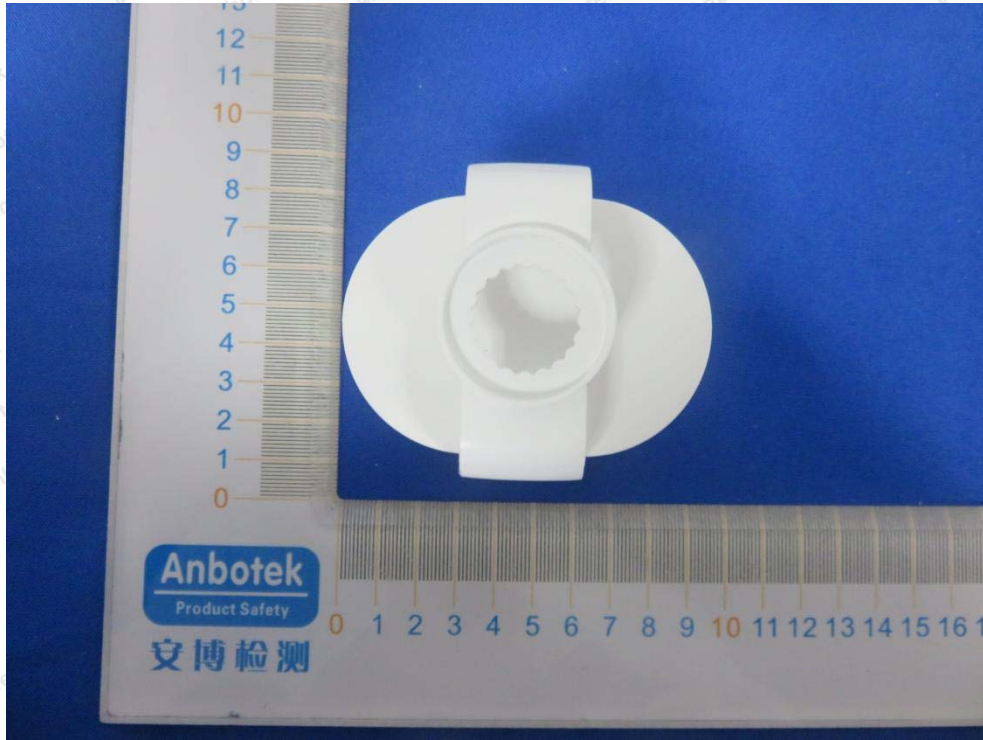


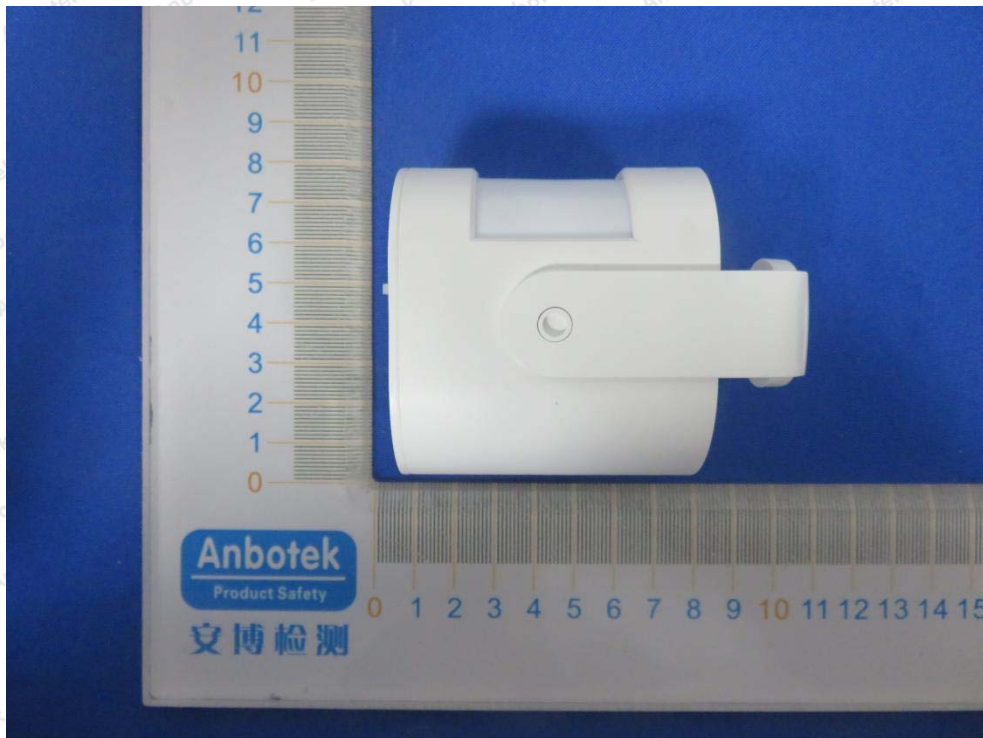
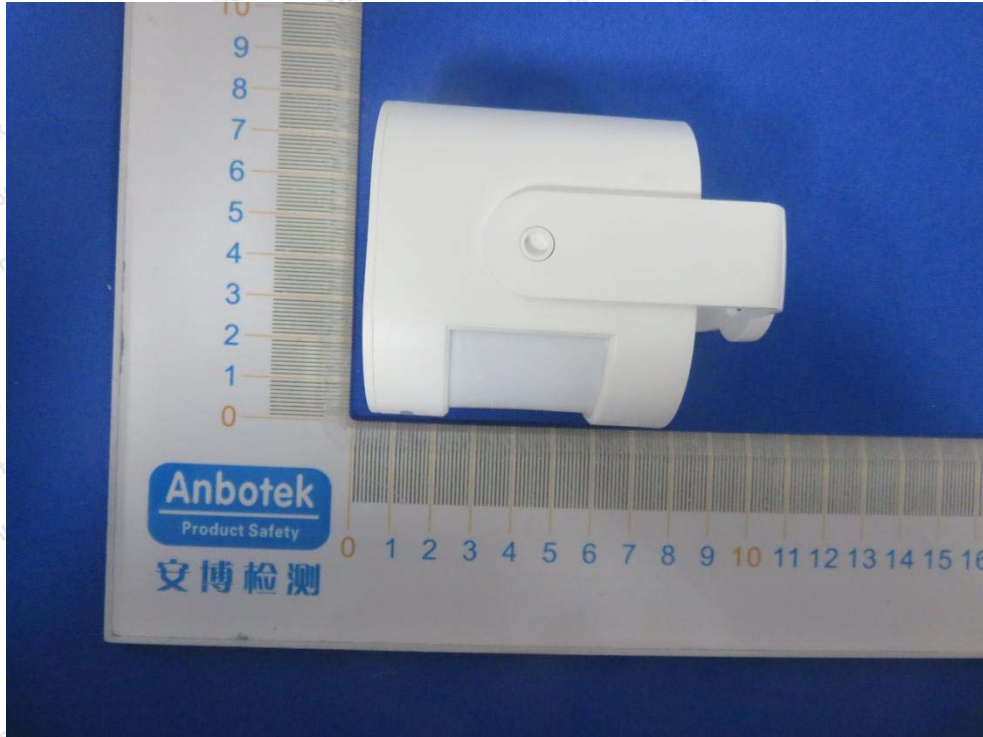
Photo of Radiation Emission Test





APPENDIX II -- EXTERNAL PHOTOGRAPH



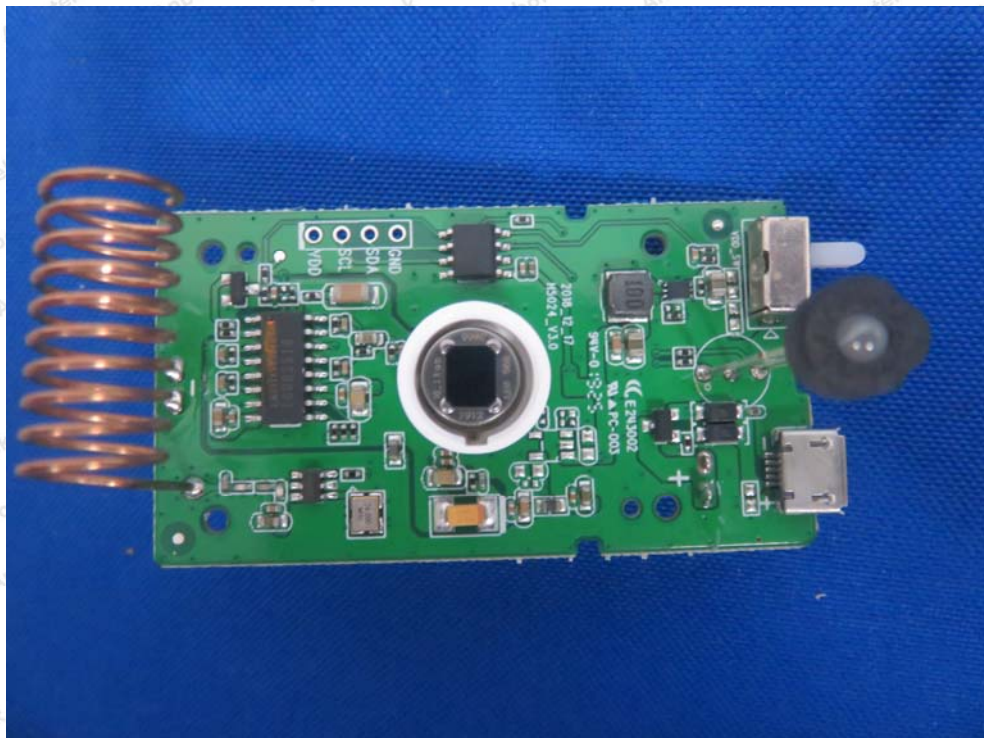
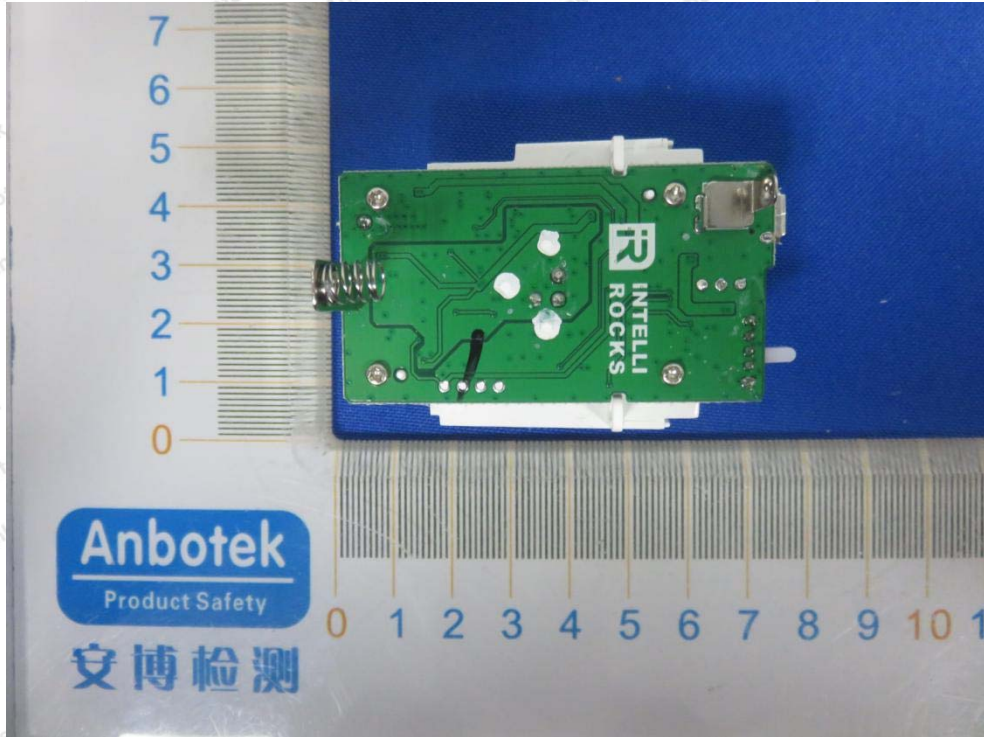


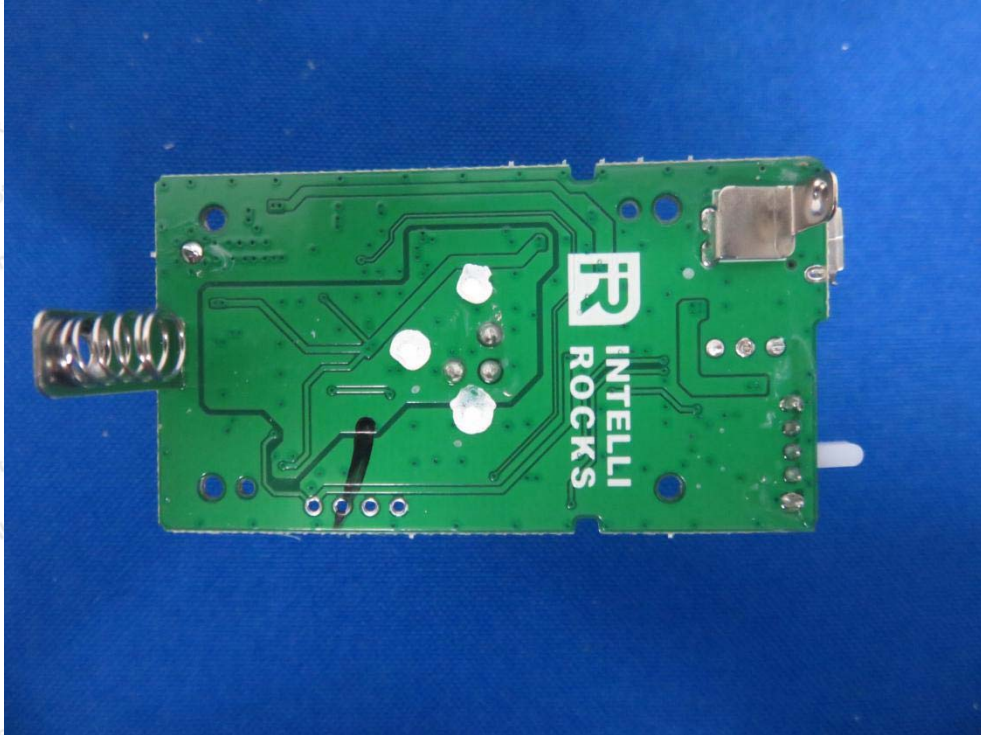


APPENDIX III -- INTERNAL PHOTOGRAPH









----- End of Report -----

Shenzhen Anbotek Compliance Laboratory Limited

Address: 1/F., Building D, Sogood Science and Technology Park, Sanwei Community, Hangcheng Street, Bao'an District, Shenzhen, Guangdong, China.
Tel: (86) 755-26066440 Fax: (86) 755-26014772 Email: service@anbotek.com

Code: AB-RF-05-a

 Hotline
400-003-0500
www.anbotek.com