

Shenzhen Yunding Communication Electronic Co., Ltd

TEL: +86 0755-23073599

FAX: +86 0755-23097189

E-mail:wht0809@163.com

APPROVAL

CUSTOMER : Shenzhen Xunlong Software Co.LTD

DESCRIPTION: Pi3

PART NO.: YDWIFITL100

CUS PART NO.:

D A T E: 2020. 5. 27

YUNDING

ENGINEERING DEPARTMENT	Q C DEPARTMENT	SALES DEPARTMENT
Shuyi Wu	Li Liu	Hongtao Wang

CUSTOMER

ENGINEERING DEPARTMENT	Q C DEPARTMENT	PURCHASING DEPARTMENT

Add: 0755 23073599 15017941162

✱ The letter of recognition is in triplicate, signed by your company

✱ Approval in duplicate, please signed by your company.

Shenzhen Yunding Communication Electronic Co., Ltd

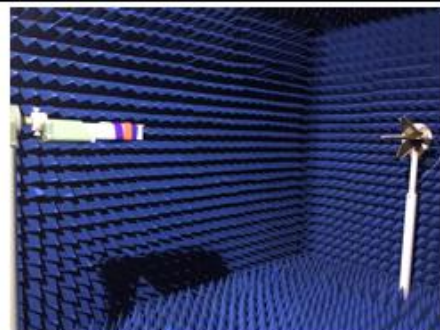
TEL: +86 0755-23073599

FAX: +86 0755-23097189

E-mail:wht0809@163.com

1.Test items and equipment

	Test items	equipment
1. (S-parameter)	1. Return Loss 2. VSWR	Network analyzer: Agilent E5071B HP 8753D
2. (Active)	1. TRP 2.TIS	1. darkroom: ETS 7x4x3 m (3D) Chamber ETS 5x3x3 m (3D) Chamber 2.general-purpose tester: Agilent 8960 E5515B ×2 StarPoint SP6011
3. (Passive)	1.Gain 2. Efficiency	1. darkroom: ETS 7x4x3 m (3D) Chamber ETS 5x3x3 m (3D) Chamber 2. Network analyzer: Agilent E5071B HP 8753D



深圳市云顶通讯电子有限公司

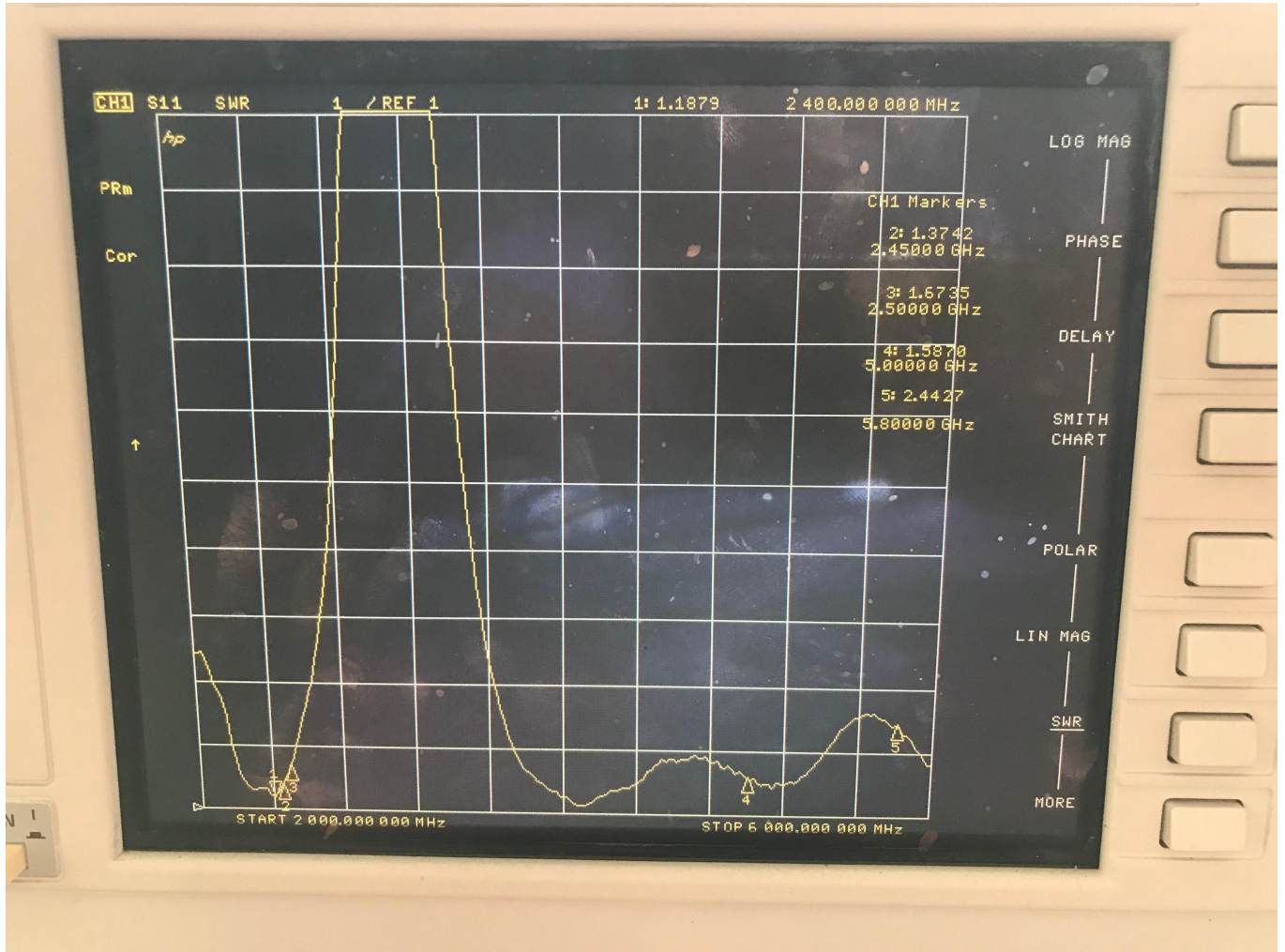
TEL: +86 0755-23073599

FAX: +86 0755-23097189

E-mail:wht0809@163.com

2.天线性能

SWR



深圳市云顶通讯电子有限公司

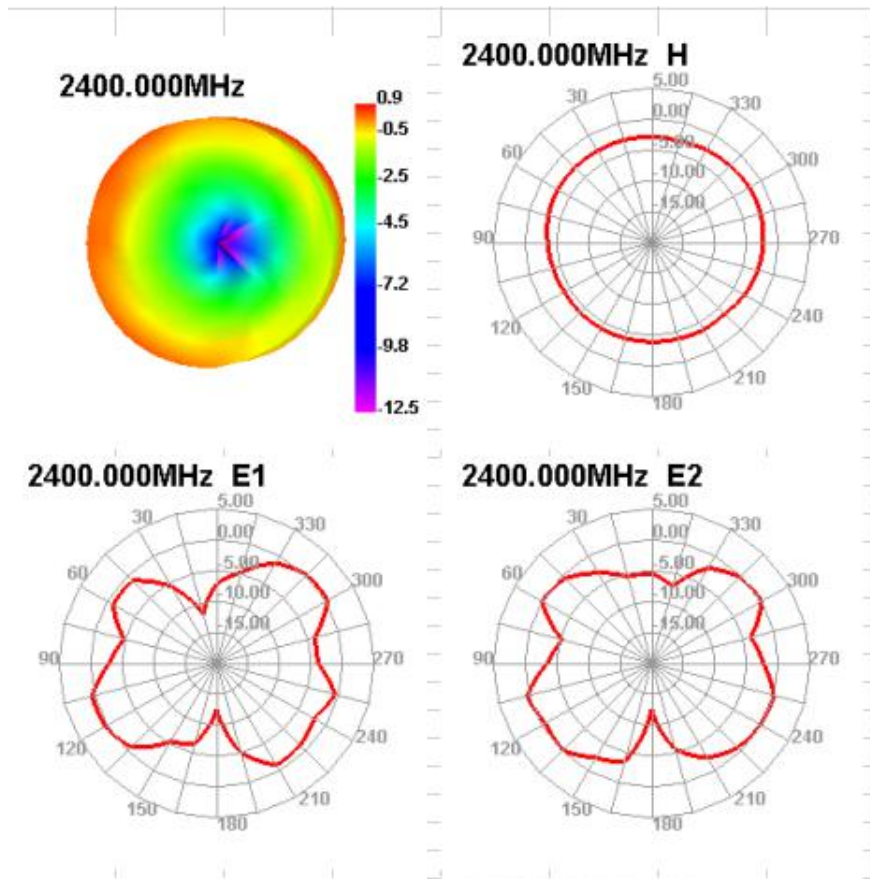
TEL: +86 0755-23073599

FAX: +86 0755-23097189

E-mail:wht0809@163.com

3.天线效率与增益

Passive Test For WIFI										
Freq (MHz)	Effi (%)	Effi (dB)	Gain (dBi)	Gain (dBd)	OHIS (%)	DHIS (%)	Max (dB)	Min (dB)	Attenuat Hor	Attenuat Ver
2400	52.5	-2.8	1.77	-0.38	33.79	18.711	1.77	-18.22	48.09	47.94
2410	52.19	-2.82	1.65	-0.5	33.644	18.548	1.65	-15.92	48.07	47.87
2420	51.69	-2.87	1.5	-0.65	33.325	18.362	1.5	-15.32	48.18	48
2430	50.49	-2.97	1.33	-0.82	32.605	17.886	1.33	-15.32	48.17	47.99
2440	52.25	-2.82	1.49	-0.66	33.893	18.354	1.49	-15.44	48.33	48.11
2450	54.16	-2.66	1.64	-0.51	35.564	18.592	1.64	-15.72	48.44	48.14
2460	53.18	-2.74	1.53	-0.62	35.419	17.761	1.53	-16.88	48.41	48.06
2470	53.35	-2.73	1.51	-0.64	35.958	17.389	1.51	-17.44	48.49	48.11
2480	54.2	-2.66	1.5	-0.65	36.806	17.391	1.5	-16.88	48.63	48.18
2490	54.75	-2.62	1.43	-0.72	37.292	17.459	1.43	-16.87	48.76	48.29
2500	51.65	-2.87	2	-1.15	35.18	16.467	1	-17.68	48.69	48.16



深圳市云顶通讯电子有限公司

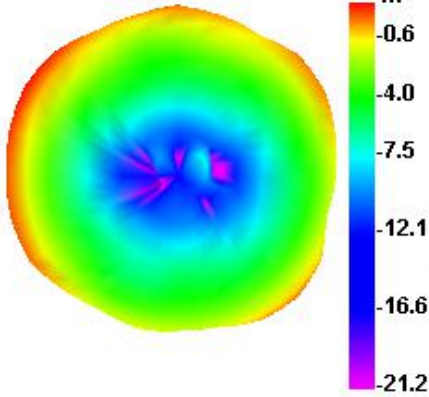
TEL: +86 0755-23073599

FAX: +86 0755-23097189

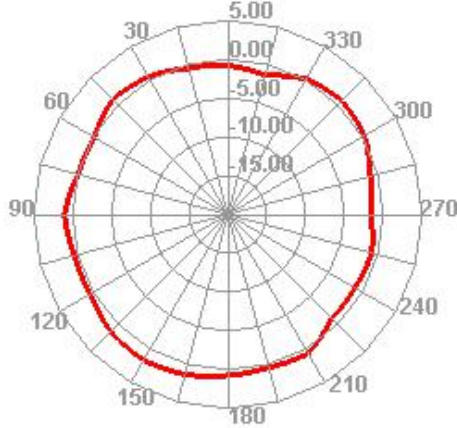
E-mail:wht0809@163.com

Passive Test For VIFI-5G										
Freq (MHz)	Effi (%)	Effi (dB)	Gain (dBi)	Gain (dBd)	OHIS (%)	DHIS (%)	Max (dB)	Min (dB)	Attenuat Hor	Attenuat Ver
5100	47.61	-1.7	1.49	0.34	32.894	34.717	2.49	-22.46	60.54	59.93
5200	45.39	-1.4	1.67	0.52	35.099	37.294	2.67	-20.99	60.75	60.28
5300	45.1	-1.48	1.76	0.61	34.539	38.585	2.76	-19.3	60.42	59.78
5400	50.94	-1.83	1.59	0.44	33.002	34.938	2.59	-19.8	60.61	60.07
5500	47.98	-1.68	1.49	0.34	32.854	35.125	2.49	-21.11	60.91	60.18
5600	48.41	-1.71	1.25	0.1	32.662	34.752	2.25	-20.24	60.86	60.31
5700	50.82	-1.95	1.02	-0.13	30.931	32.887	2.02	-21.02	61.2	60.63
5800	54.68	-1.89	2	-0.02	31.456	33.23	2.13	-20.23	60.81	60.17

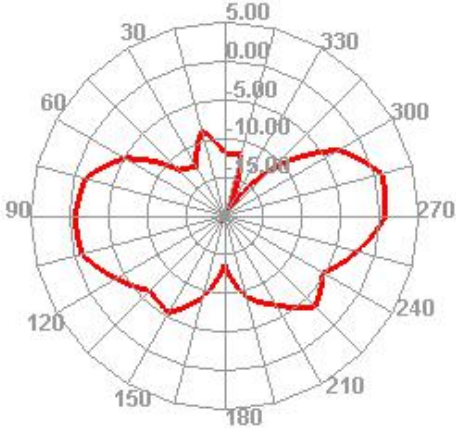
5100.000MHz



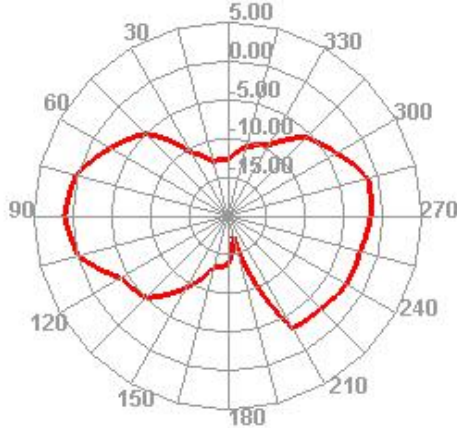
5100.000MHz H



5100.000MHz E1



5100.000MHz E2



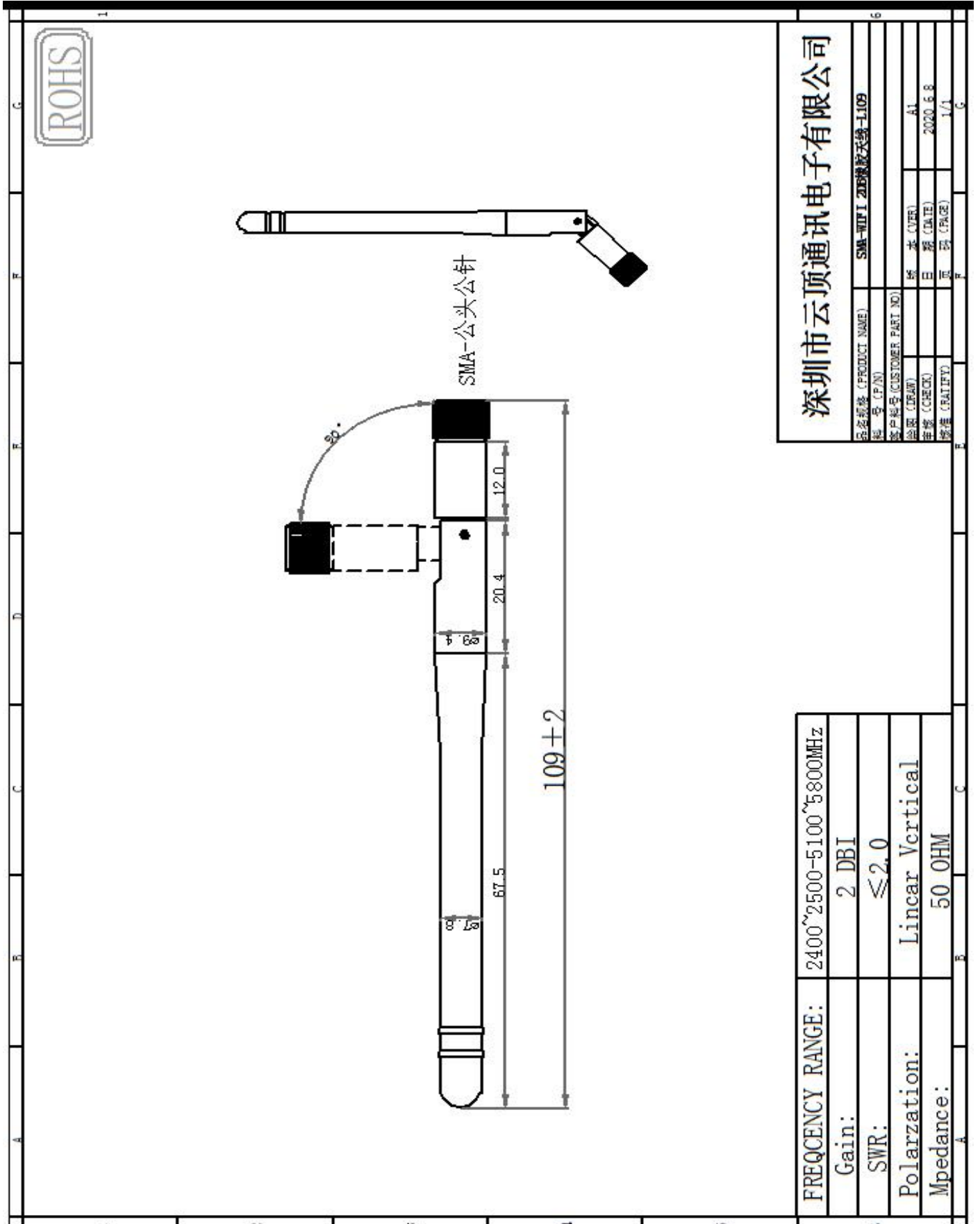
深圳市云顶通讯电子有限公司

TEL: +86 0755-23073599

FAX: +86 0755-23097189

E-mail:wht0809@163.com

4.天线结构图



深圳市云顶通讯电子有限公司

TEL: +86 0755-23073599

FAX: +86 0755-23097189

E-mail:wht0809@163.com

电器技术参数

电性能指标		Electrical Specifications	
频率范围	2400-2500/5100-5800MHz	Frequency Range	2400-2500/5100-5800MHz
电压驻波比	≤2.0	VSWR	≤2.0
输入阻抗	50 Ω	Input Impedance	50 Ω
增益	2DBI	Gain	2DBI
最大输入功率	50W	Maximum Input Power	50W
机械指标		Mechanical Specifications	
天线颜色	黑色	Antenna Color	Black
接口形式	SMA	Input connector	SMA
天线长度	109mm	Cable length	109mm
工作温度	-40℃~+85℃	Working Temperature	-40℃~+85℃
工作湿度	20~80%	Working Humidity	20~80%