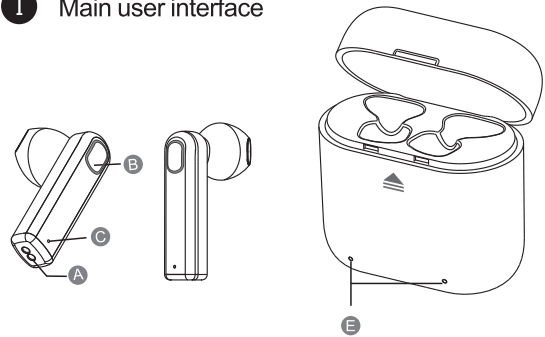


Air Headset

User Manual

I Main user interface

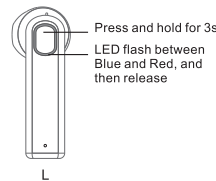


- A. Contact charging point
- B. Function button
- C. Microphone
- D. Charging USB port
- E. Charging status LED
- F. Power on/off

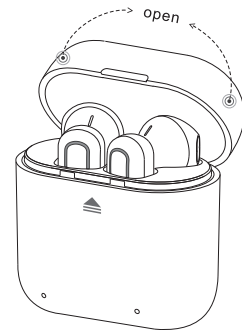
II Start up

a. Open Charging case, take out the earbuds

b. Pairing preparation



For initial use, press and hold for 3s for either earbud (Master earbud) until the LED flash between blue and red, and then release. (voice notice: power on-->pairing).

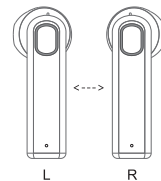


c. Pairing with cellphone



Open Cellphone Bluetooth and search, find "Air Headset" and then connect.

d. TWS Connect



Press and hold the function button of the other earbud (slave earbud) for 1s, release after LED flash in red. Two earbuds pairing with each other automatically, the LED flashes in blue after connected (Default setting). (voice notice: TWS Connect)

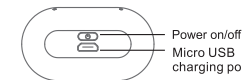
e. Power off



Press and hold for 1s

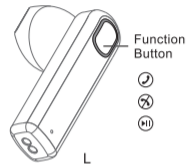
Press and hold the function button of either earbud for 1s, two earbuds power off at the same time. (Voice notice: Power off)

III Charging



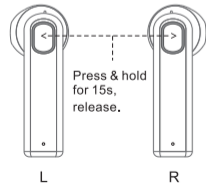
- a. When battery low, the LED flashes in Red and there is also voice notice.
- b. Must press power on/off button before charging the earbuds.
- c. Plug the earbud into the charging case, LED will be on in Red. When the earbud fully charged, the LED will be on in Blue and off after 5s.
- d. While Charging, Status LED flashes in red, after fully charged, Status LED flashes in blue.

IV More functions



- For incoming call, Press function button once to answer; Press function button twice to reject (When at the calling mode, only master earbud has sound)
- When at music mode, press the function button once to pause.

V Default setting recovery



Default setting recovery: Make sure there are enough power, put two earbuds close, and then press and hold the function Button for 15s to enter into recovery mode, will recover the default settings after released 10s, the LED flashes in Blue. (If only the master earbud has sound and the slave earbud has no sound while listening to music, suggest to fix it by default setting recovery.)

Basic Parameter

Product Name : Air Headset
 Operation range : 10m
 Charging time : 1.5 hours
 Call time : 5 hours
 Music Time : 3 hours
 Charging Input : 5V 1A
 Battery Type : Polymer Li-Ion Battery
 Earbud weight : 6g+6g

Important Notice

- Please make sure the product is fully charged before initial use.
- Please use the brand adaptor complying all safety requirements only to charge this product.
- If your cellphone cannot search Air Headsets, please double check if your cellphone bluetooth is at the "equipment visible mode", After initial use and two earbuds are successfully paired, they will automatically pair with each other for next use. If no use for a long time, need to follow up start up steps for next use.
- If only one earbud has sound at music mode, please restart the earbuds or recover default setting.

Security warning

- Please use the product in the temperature between 0°C-45°C . When the enviroment temperature is too high or low, it may cause the product malfunction.
- Please keep the product dry, do not contact water or humidity enviroment
- Please do not drop, throw, pull/drag the product to prevent damage.
- Please power off before clean the product.
- Please use the product at proper volume while listenning music or answering call, long time at high volume usage could lead to permanent hearing loss.
- The built in battery is not dismountable, please do not replace by yourself. If it's really necessary, please ask help from authorized service center.
- Please dispose the product according to local law, can not treat it as domestic garbage.
- Without adult supervision, please keep the product out of reach of children, the swallow of small components included may cause asphyxia.

Warranty

- This product is covered under warranty for a period of oneyear from the date of purchase limited to normal use and maintenance of the machine parts, materials and functions. Problems and failures verified upon further identification, will be provided free repair and replacement parts.
- Limited to the following:
 - Headset is beyond the warranty period;
 - User does not follow the instructions. so that the headphone wire and earplug broken.
 - Without the authorization to dismount, repair, alteration structures;
 - Can't provide proof of purchase.
 - Man made damage.
 - Due to natural disasters and other force majeure (such as earthquakes, fires) product failure of damage causes;

Warranty Card

User's name _____
 User's telephone# _____
 User's Add _____
 Date of purchase _____
 Invoice # _____
 Dealer's name _____
 Dealer's Add _____
 Dealer's telephone# _____

QC Report info

Model #	
Inspector	
Date	

FCC Caution:

This device complies with part 15 of the FCC Rules. Operation is subject to the following two conditions: (1) This device may not cause harmful interference, and (2) this device must accept any interference received, including interference that may cause undesired operation.

Any Changes or modifications not expressly approved by the party responsible for compliance could void the user's authority to operate the equipment.

Note: This equipment has been tested and found to comply with the limits for a Class B digital device, pursuant to part 15 of the FCC Rules. These limits are designed to provide reasonable protection against harmful interference in a residential installation. This equipment generates uses and can radiate radio frequency energy and, if not installed and used in accordance with the instructions, may cause harmful interference to radio communications. However, there is no guarantee that interference will not occur in a particular installation. If this equipment does cause harmful interference to radio or television reception, which can be determined by turning the equipment off and on, the user is encouraged to try to correct the interference by one or more of the following measures:

- Reorient or relocate the receiving antenna.
- Increase the separation between the equipment and receiver.
- Connect the equipment into an outlet on a circuit different from that to which the receiver is connected.
- Consult the dealer or an experienced radio/TV technician for help.