

Base-station user guide

TriangleCNC Inc

Revision: 1.05

August 19, 2017

FCC Compliance Statement

This device complies with part 15 of the FCC rules. Operation is subject to the following two conditions: (1) This device may not cause harmful interference, and (2) this device must accept any interference received, including interference that may cause undesired operation.

FCC Interference Statement

This equipment has been tested and found to comply with the limits for a Class A digital device, pursuant to part 15 of the FCC Rules. These limits are designed to provide reasonable protection against harmful interference when the equipment is operated in a commercial environment.

This equipment generates, uses, and can radiate radio frequency energy and, if not installed and used in accordance with the instruction manual, may cause harmful interference to radio communications. Operation of this equipment in a residential area is likely to cause harmful interference in which case the user will be required to correct the interference at his own expense.

FCC Caution

Any changes or modifications not expressly approved by the party responsible for compliance could void the user's authority to operate this equipment. This transmitter must not be co-located or operating in conjunction with any other antenna or transmitter.

FCC Radiation Exposure Statement

This equipment complies with FCC radiation exposure limits set forth for an uncontrolled environment. This equipment should be installed and operated with minimum distance 20 cm between the radiator and your body. This transmitter must not be co-located or operating in conjunction with any other antenna or transmitter.

Table of contents

1. Hardware specification	3
1.1 General Specification	3
1.2 Hardware block diagram and dimension.....	3
1) Block diagram.....	3
2) Board dimension.....	4
3) Description of connectors	5
4) Description of switches	6
5) Description of LEDs	6
2. Program status LED.....	7
3. Interface for user.....	8
1) Login the webpage of base-staation by using 'Internet Explorer'	8
2) Login with default IP.....	8
3) Login account.....	8

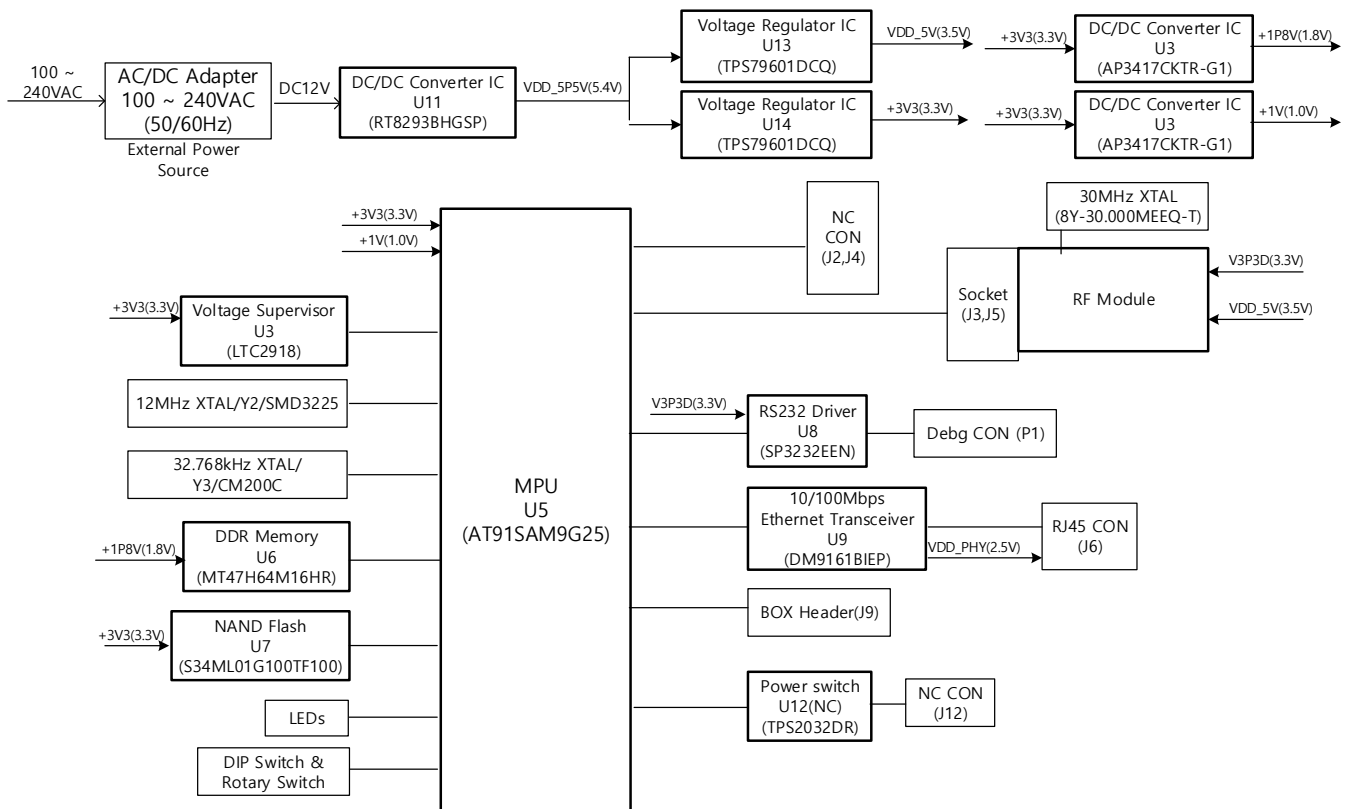
1. Hardware specification

1.1 General Specification

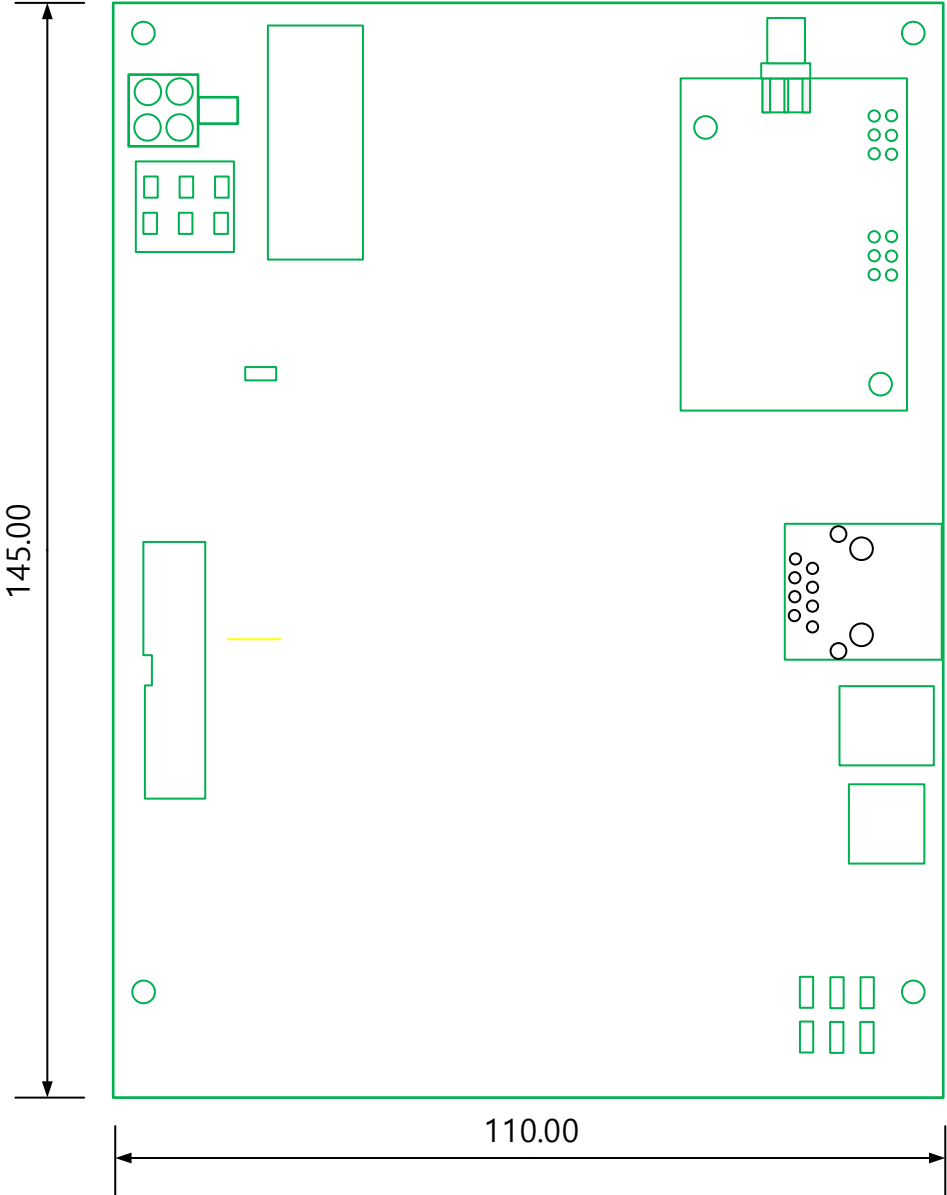
Item	Description
Product Input voltage	100 ~ 240VAC 50Hz/60Hz (external power source)
Internal Input voltage	DC12V (9 ~ 15V) (input voltage of board)
Current	300mA @12V
OS	Linux
Ethernet	10/100Mbps
Internal connector	- RF module connector
External connector	- RJ45 JACK (Ethernet 10/100Mbps)

1.2 Hardware block diagram and dimension

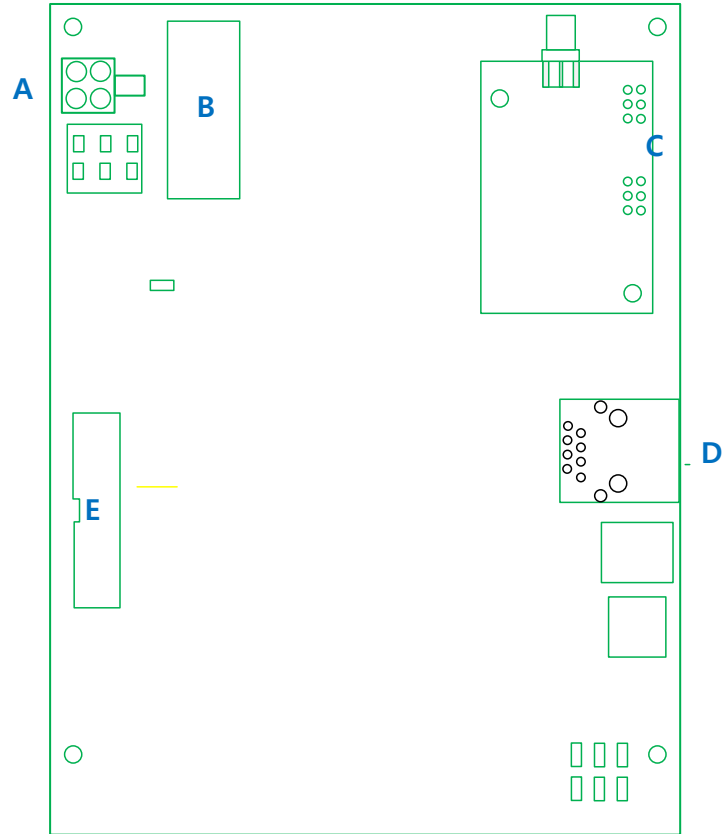
1) Block diagram

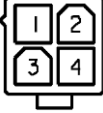


2) Board dimension

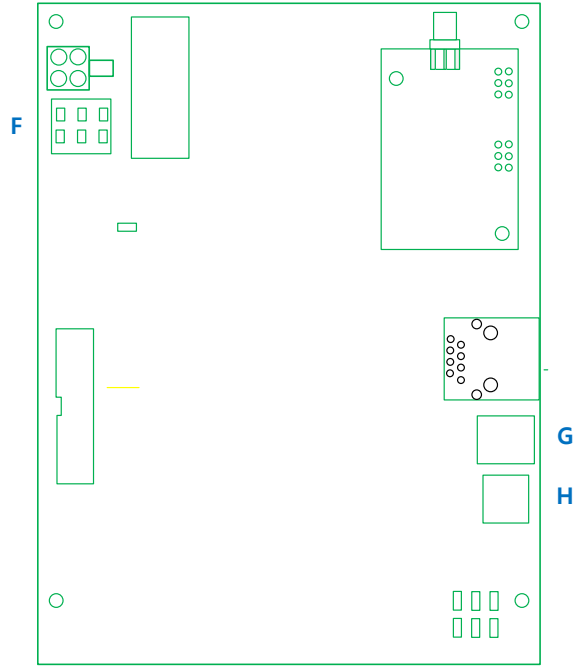


3) Description of connectors



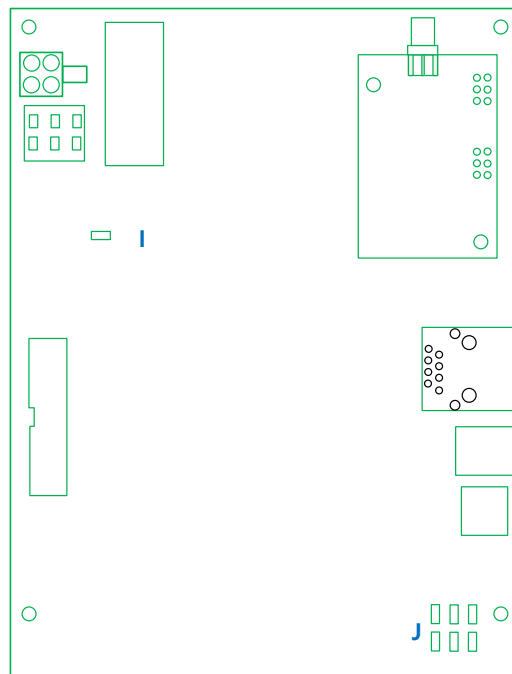
Number	Name	Description
A	12V Input connector	<ul style="list-style-type: none"> - Molex 5569-04A1 connector - Pin number  <p>1 : GND 2: GND 3: DC12 4: DC12V</p>
B	Debug connector	<ul style="list-style-type: none"> - D-SUB 9 straight - RS232 2 Port
C	RF Module connector	<ul style="list-style-type: none"> - 2.54mm Pin header
D	Ethernet connector	<ul style="list-style-type: none"> - RJ45
E	JTAG connector	<ul style="list-style-type: none"> - 2x10 Box header

4) Description of switches



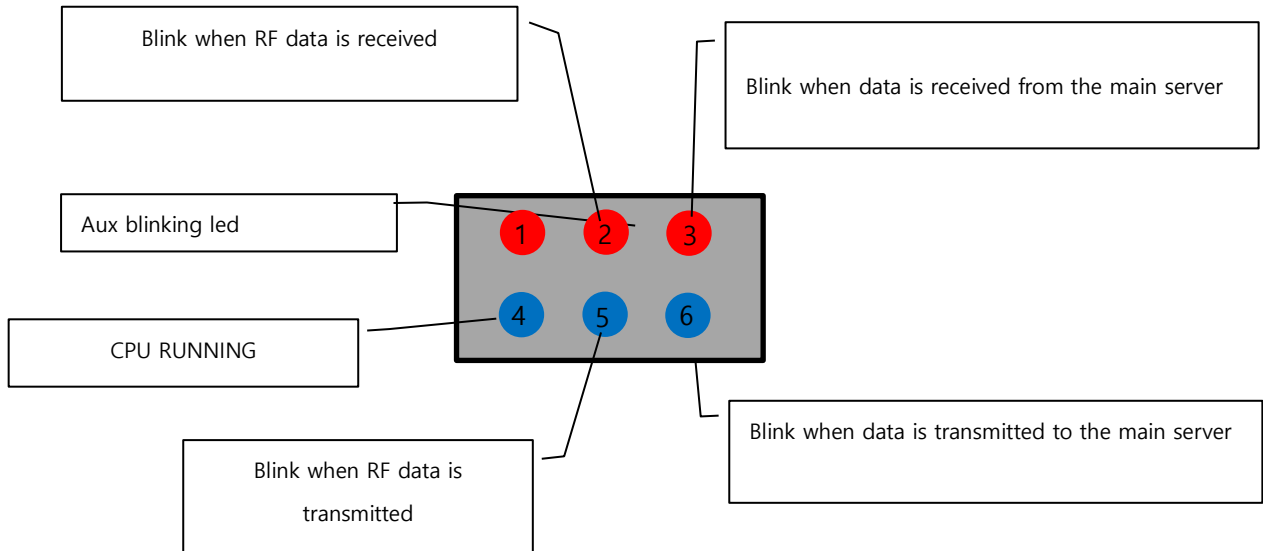
Number	Name	Description
F	Power switch	Toggle switch
G	Mode selection DIP switch	4Pin dip switch
H	Mode selection rotary switch	10digit rotary switch

5) Description of LEDs



Number	Name	Description
I	Power status LED	3pi LED
J	Program status LED	Refer the next section

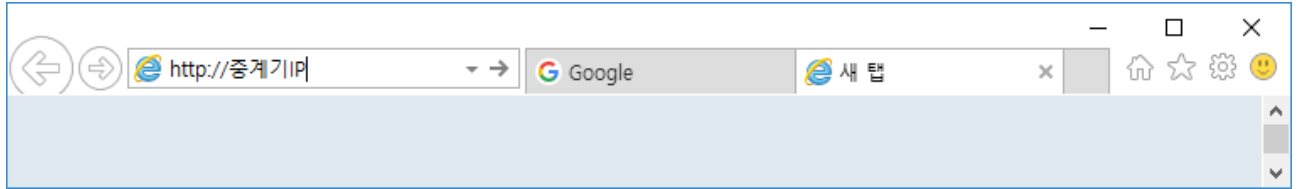
2. Program status LED



3. Interface for user

3.1. Login into webpage

- 1) Login the webpage of base-station by using 'Internet Explorer'



- 2) Login with default IP
 - Turn DIP switch #1 on, then supply power
 - Login with '192.168.1.100' IP

- 3) Login account

ID: *****

Password: *****

This device must be professionally installed and maintained by TRIANGLECNC corp. It is not allowed ordinary people personally installing the device.