

Annex D Plots of Maximum SAR Test Results

MEASUREMENT 1

Type: Phone measurement (Complete)

Parameter area scan=step 15 mm

Parameter zoom scan=dx=8mm, dy=8mm, dz=5mm

Date of measurement: 2018.11.12

Measurement duration: 17 minutes 50 seconds

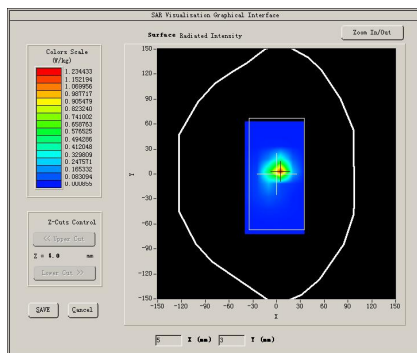
A. Experimental Conditions.

| | |
|-----------------|------------------|
| Phantom | Body |
| Device | Plane |
| Band | IEEE 802.11b ISM |
| Channels | MIDDLE |
| Signal | IEEE 802.b |

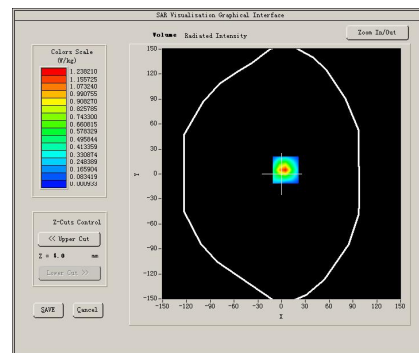
B. SAR Measurement Results.

| | |
|--|--------|
| Channel | 6 |
| Frequency (MHz) | 2437.0 |
| Relative permittivity (real part) | 52.891 |
| Conductivity (S/m) | 1.958 |
| Power drift (%) | -1.25 |
| Ambient Temperature: | 22.4°C |
| Liquid Temperature: | 21.5°C |
| ConvF: | 4.93 |
| Duty Cycle: | 1:1.0 |

SURFACE SAR



VOLUME SAR

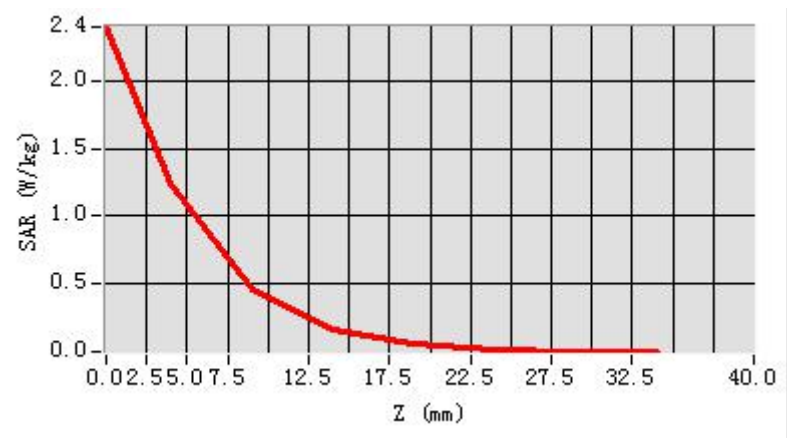


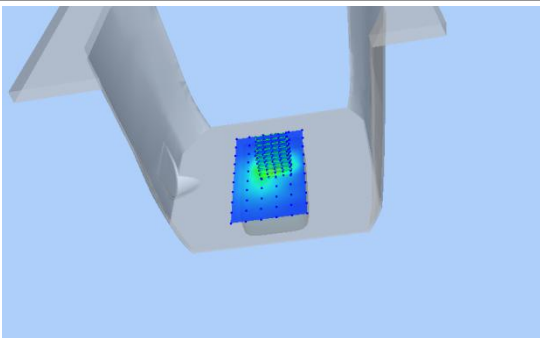
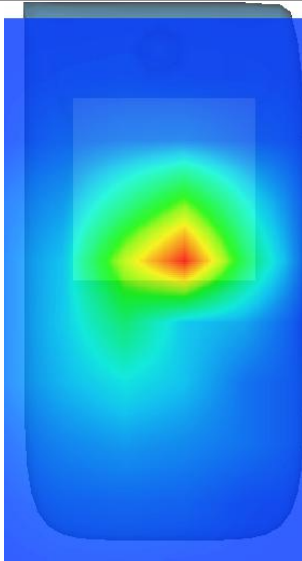
Maximum location: X=5.00000 Y=5.00000

SAR Peak: 2.432219 W/kg

| | |
|-----------------------|----------|
| SAR 10g (W/Kg) | 0.398125 |
| SAR 1g (W/Kg) | 1.129973 |

| Z (mm) | 0.00 | 4.00 | 9.00 | 14.00 | 19.00 | 24.00 | 29.00 | 34.00 |
|-------------------|--------|--------|--------|--------|--------|--------|--------|--------|
| SAR (W/Kg) | 2.3958 | 1.2382 | 0.4618 | 0.1607 | 0.0546 | 0.0178 | 0.0031 | 0.0010 |
| | 26 | 10 | 23 | 40 | 78 | 49 | 59 | 14 |



| 3D screen shot | Hot spot positio |
|---|--|
|  |  |