

ANNEX

EXHIBIT 1- PRODUCT LABELING

Proposed FCCID Label Format

FCC ID: 2AQ7Q-DBA13310

Specifications: The label shall be securely affixed to a permanently attached part of the device, in a location where it is visible or easily accessible to the user, and shall not be readily detachable. The label shall be sufficiently durable to remain fully legible and intact on the device in all normal conditions of use throughout the device's expected lifetime.

Proposed Label Location on EUT

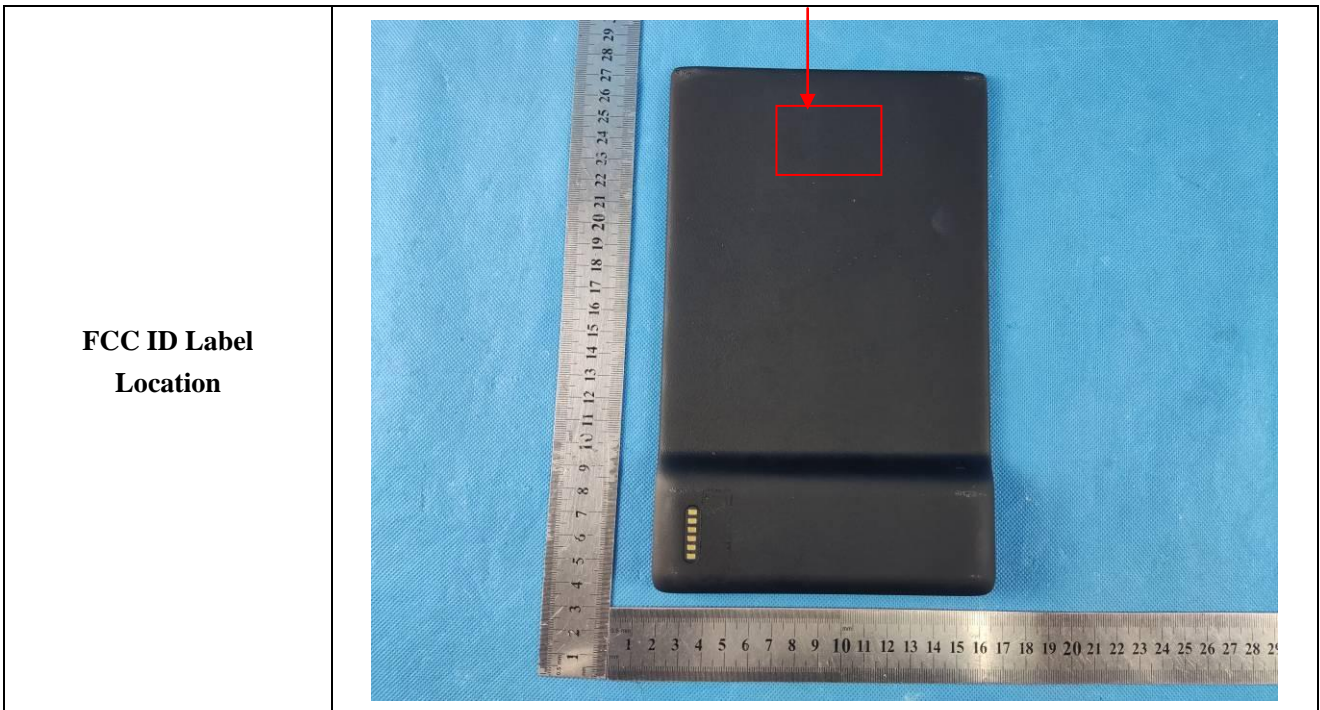


EXHIBIT 2 - EUT EXTERNAL PHOTOGRAPHS

<p>EUT View 1</p>	 <p>A photograph showing a black rectangular EUT device, a black power adapter, and a black USB cable. A metal ruler is placed horizontally below the items and vertically to the left of the device for scale. The device has a reflection on its surface and the word 'OTEN' is visible at the bottom right corner. The background is a blue textured surface.</p>
<p>EUT View 2</p>	 <p>A close-up photograph of the EUT device. A metal ruler is placed horizontally below the device for scale. The device is black and rectangular, with a reflection on its surface and the word 'OTEN' visible at the bottom right corner. The background is a blue textured surface.</p>

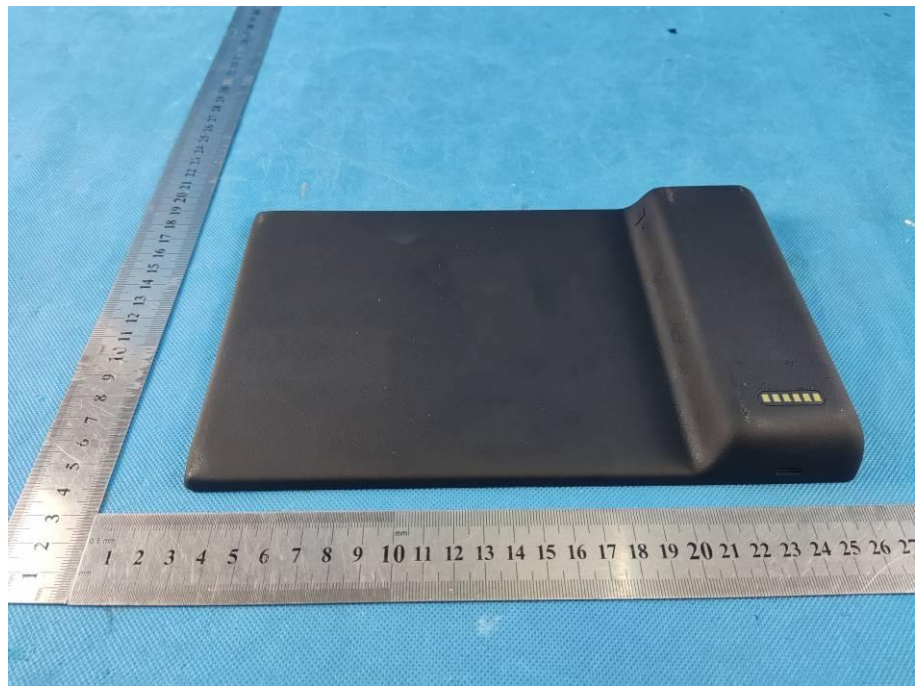
EUT View 3



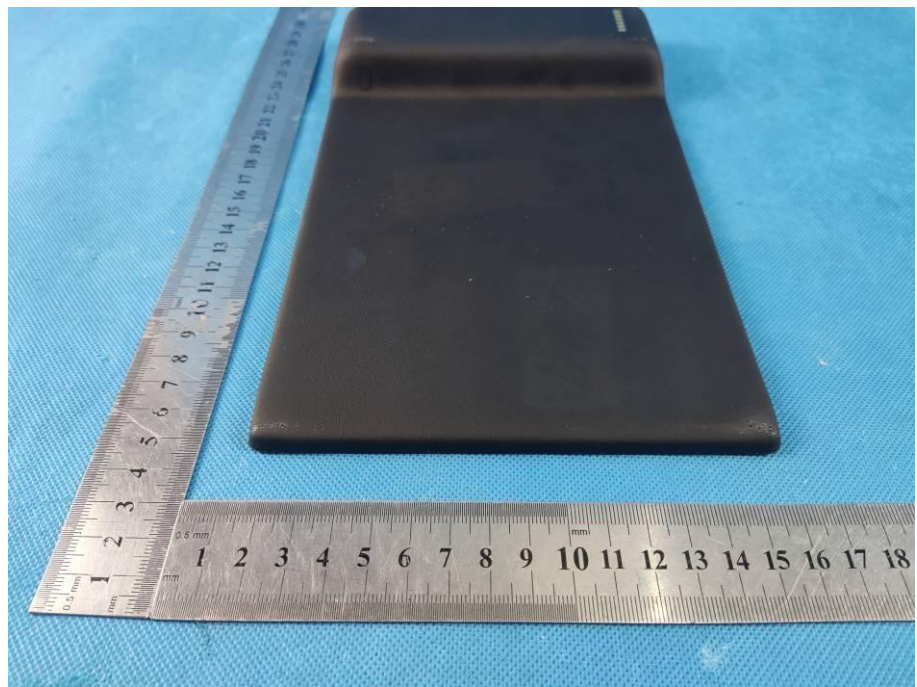
EUT View 4



EUT View 5



EUT View 6



EUT View 7

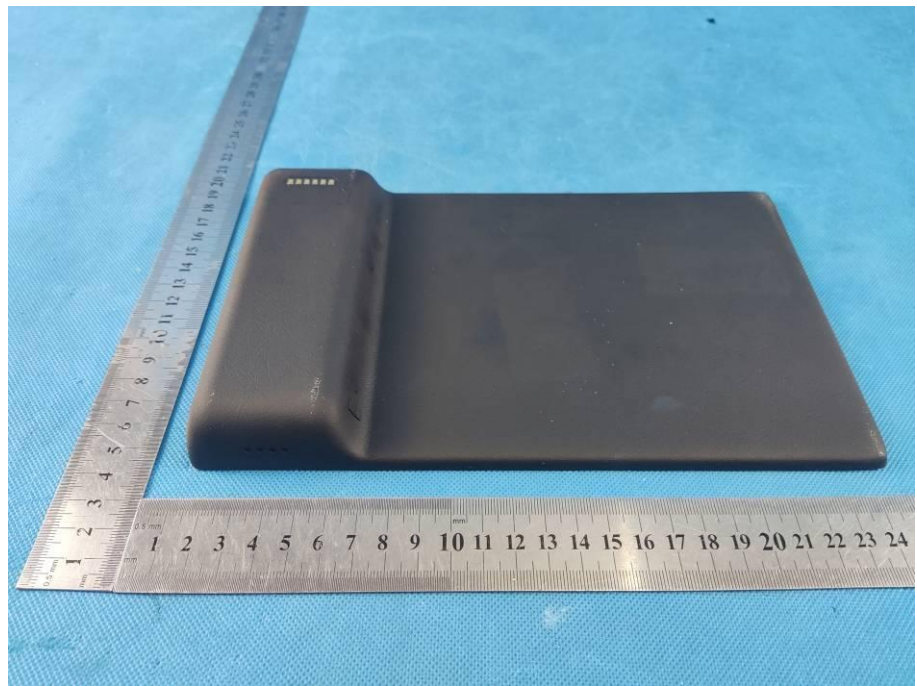
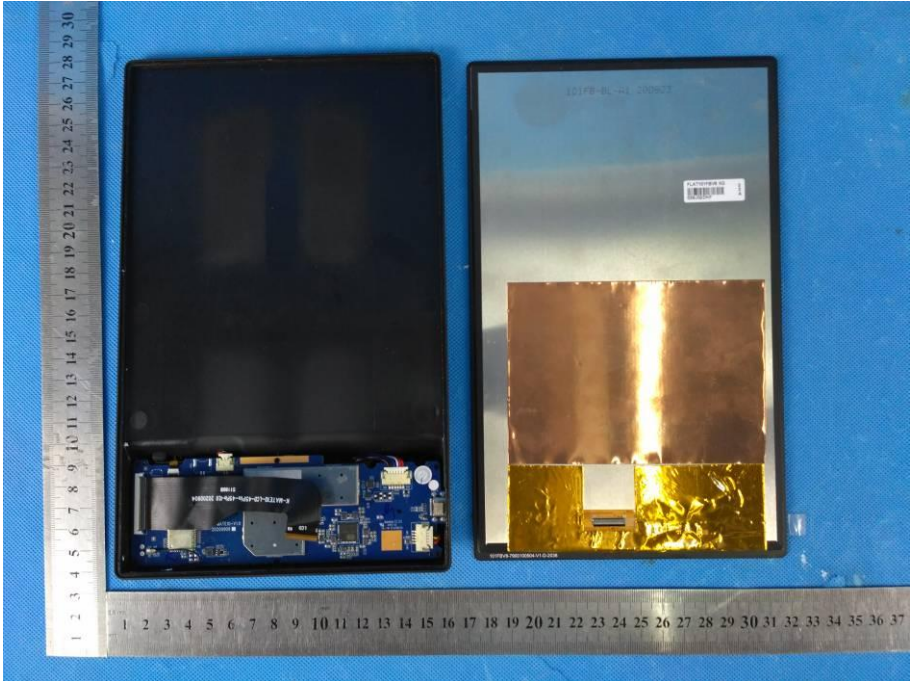
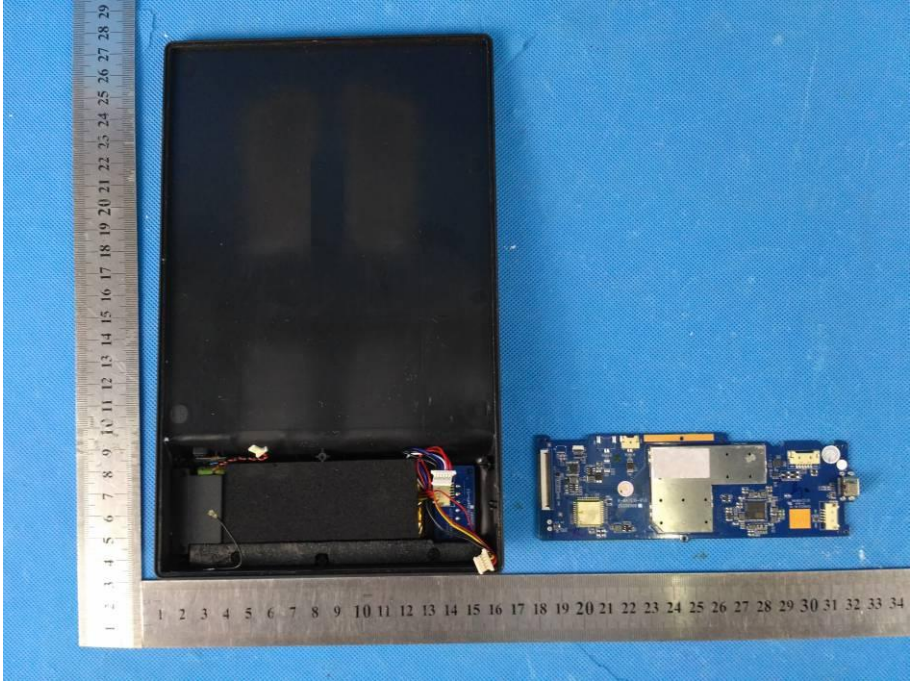
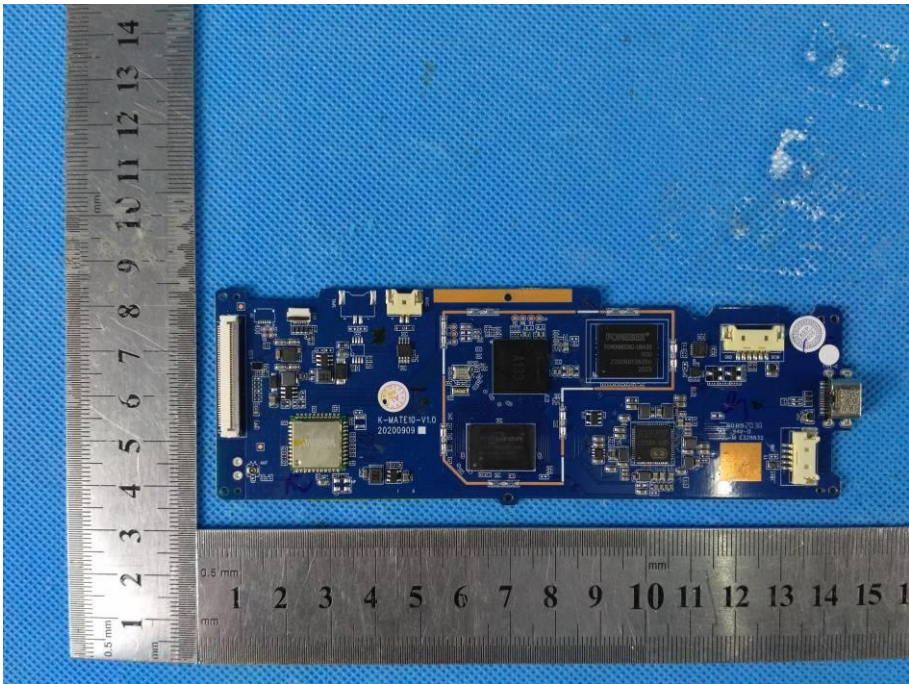
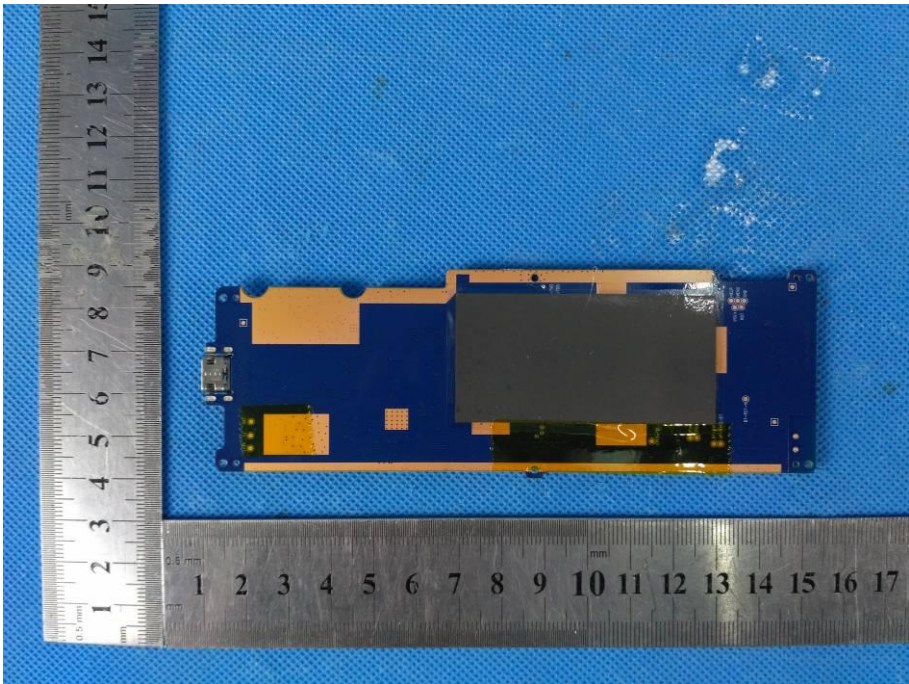
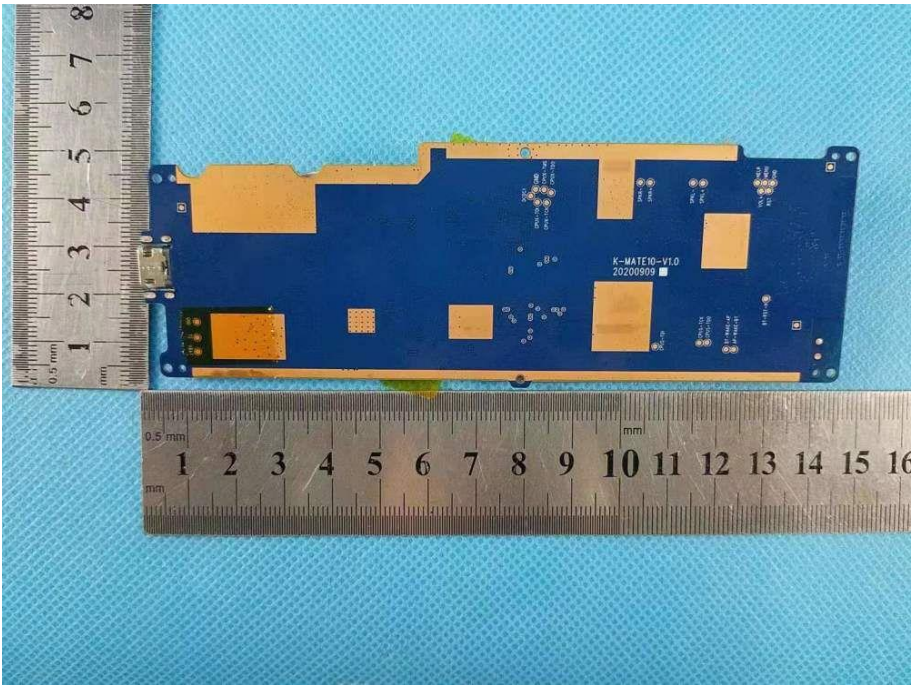
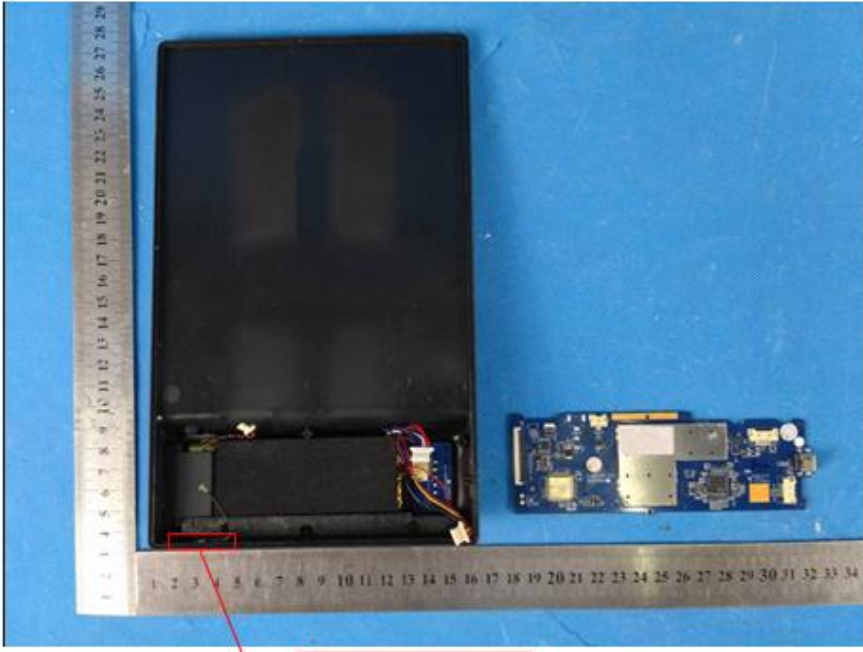


EXHIBIT 3 - EUT INTERNAL PHOTOGRAPHS

<p>EUT Housing and Board View 1</p>	 <p>This photograph shows the internal components of the EUT housing and board assembly. On the left is the black plastic housing, and on the right is the blue printed circuit board (PCB) with various electronic components. A ruler is placed vertically on the left and horizontally at the bottom for scale. The PCB has a label that reads 'H002E 09-001-001-01-0119-0'. The housing has a label that reads '2017P-01-01-000002' and a barcode.</p>
<p>EUT Housing and Board View 2</p>	 <p>This photograph shows the internal components of the EUT housing and board assembly from a different perspective. The black plastic housing is on the left, and the blue PCB is on the right. A ruler is placed vertically on the left and horizontally at the bottom for scale. The PCB has a label that reads 'H002E 09-001-001-01-0119-0'. The housing has a label that reads '2017P-01-01-000002' and a barcode.</p>

<p style="text-align: center;">Solder Board-Component View 1</p>	 A photograph of a blue printed circuit board (PCB) with various electronic components, including integrated circuits, capacitors, and connectors. The board is placed on a blue textured surface. Two metal rulers are used for scale: one vertical ruler on the left side and one horizontal ruler at the bottom. The vertical ruler shows markings from 1 to 14 mm, and the horizontal ruler shows markings from 1 to 15 mm. The board is oriented horizontally.
<p style="text-align: center;">Solder Board-Component View 2</p>	 A photograph of the same blue PCB from a different perspective, showing the underside or a different side. It features a large black rectangular component, possibly a battery or a large capacitor, and other smaller components. The board is placed on the same blue textured surface. Two metal rulers are used for scale: one vertical ruler on the left side and one horizontal ruler at the bottom. The vertical ruler shows markings from 1 to 14 mm, and the horizontal ruler shows markings from 1 to 17 mm. The board is oriented horizontally.

<p style="text-align: center;">Solder Board-Component View 3</p>	 <p>A photograph showing a blue printed circuit board (PCB) with various components and solder joints. The board is placed on a blue textured surface. Two metal rulers are used for scale: one vertical ruler on the left side and one horizontal ruler at the bottom. The vertical ruler shows markings from 1 to 8 mm, and the horizontal ruler shows markings from 1 to 16 mm. The PCB has several gold-colored pads and components. Text on the board includes "K-MATE10-V1.0" and "20200909".</p>
<p style="text-align: center;">Antenna View</p>	 <p>A photograph showing the back of a black smartphone with the battery cover removed. A blue PCB is placed next to it for comparison. A metal ruler is at the bottom, showing markings from 1 to 34 mm. A red box highlights a small component on the PCB, with a red line pointing to a label that reads "WIFI/BT Antenna".</p>

***** END OF REPORT *****