



**FCC Part 15B TEST REPORT**

Report No.: STS2006175E01

Issued for  
DTEN Inc

97 E Brokaw Road suite 180 San Jose CA 95112

<b>Product Name:</b>	DTEN D7
<b>Brand Name:</b>	DTEN
<b>Model Name:</b>	DB50455
<b>Series Model:</b>	N/A
<b>FCC ID:</b>	2AQ7Q-DB50455
<b>Test Standard:</b>	FCC 47 CFR Part 15: Subpart B

Any reproduction of this document must be done in full. No single part of this document may be reproduced without permission from STS, All Test Data Presented in this report is only applicable to presented Test sample.





TEST RESULT CERTIFICATION

Applicant's Name : DTEN Inc
Address : 97 E Brokaw Road suite 180 San Jose CA 95112
Manufacture's Name : DTEN Inc
Address : 97 E Brokaw Road suite 180 San Jose CA 95112

Product Description :
Product Name : DTEN D7
Brand Name : DTEN
Model Name : DB50455
Series Model : N/A

Standards : FCC 47 CFR Part 15: Subpart B
Test Procedure : ANSI C63.4-2014

This device described above has been tested by STS, and the test results show that the equipment under test (EUT) is in compliance with the FCC requirements. And it is applicable only to the tested sample identified in the report.

This report shall not be reproduced except in full, without the written approval of STS, this document may be altered or revised by STS, personal only, and shall be noted in the revision of the document.

Date of Test :
Date of Performance of Tests : 27 Apr. 2020~28 June. 2020
Date of Issue : 29 June. 2020
Test Result : Pass

Compiled by : Mickey Deng
(Mickey Deng)

Technical Manager : Chopin Xiao
(Chopin Xiao)

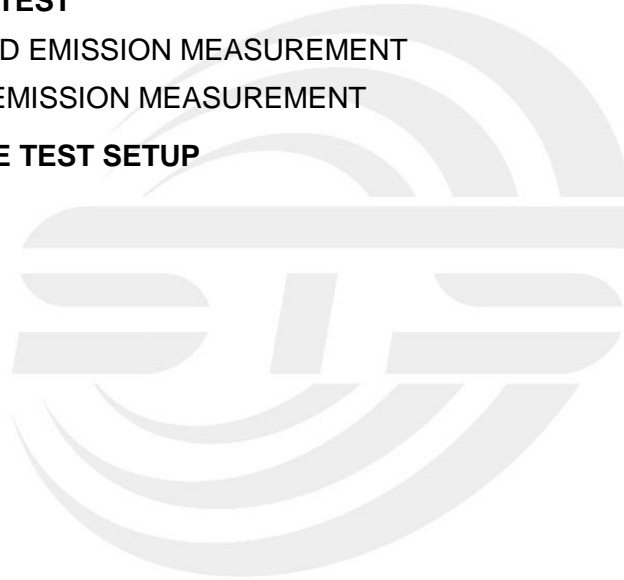
Authorized Signatory : Vita Li
(Vita Li)





## Table of Contents

<b>1. SUMMARY OF THE TEST RESULTS</b>	<b>5</b>
1.1 TEST FACTORY	5
1.2 MEASUREMENT UNCERTAINTY	5
<b>2. GENERAL INFORMATION</b>	<b>6</b>
2.1 GENERAL DESCRIPTION OF THE EUT	6
2.2 DESCRIPTION OF THE TEST MODES	7
2.3 BLOCK DIGRAM SHOWING THE CONFIGURATION OF THE SYSTEM TESTED	7
2.4 DESCRIPTION OF THE SUPPORT UNITS	8
2.5 EQUIPMENTS LIST FOR ALL TEST ITEMS	9
<b>3. EMC EMISSION TEST</b>	<b>10</b>
3.1 CONDUCTED EMISSION MEASUREMENT	10
3.2 RADIATED EMISSION MEASUREMENT	14
<b>4. PHOTOS OF THE TEST SETUP</b>	<b>25</b>





**Revision History**

Rev.	Issue Date	Report No.	Effect Page	Contents
00	29 June. 2020	STS2006175E01	ALL	Initial Issue





## 1. SUMMARY OF THE TEST RESULTS

Test procedures according to the technical standards:

EMISSION			
Standard	Item	Result	Remarks
FCC 47 CFR Part 15: Subpart B	Conducted Emission	PASS	Meet Class B limit
	Radiated Emission	PASS	Meet Class B limit

NOTE:

(1) "N/A" denotes test is not applicable in this Test Report

### 1.1 TEST FACTORY

Company Name:	SHENZHEN STS TEST SERVICES CO.,LTD.
Address:	A 1/F, Building B, Zhuoke Science Park, No.190 Chongqing Road, HepingShequ, Fuyong Sub-District, Bao'an District, Shenzhen, Guang Dong, China
Telephone:	+86-755 3688 6288
Fax:	+86-755 3688 6277
Registration No.:	FCC test Firm Registration Number: 625569
	IC test Firm Registration Number: 12108A
	A2LA Certificate No.: 4338.01

### 1.2 MEASUREMENT UNCERTAINTY

The reported uncertainty of measurement  $y \pm U$ , where expanded uncertainty  $U$  is based on a standard uncertainty multiplied by a coverage factor of  $k=2$ , providing a level of confidence of approximately 95 %.

No.	Item	Uncertainty
1	Conducted Emission (9KHz-150KHz)	$\pm 3.37$ dB
2	Conducted Emission (150KHz-30MHz)	$\pm 3.83$ dB
3	All emissions,radiated(<1G) 30MHz-1000MHz	$\pm 5.6$ dB
4	All emissions,radiated(>1G) 1GHz-6GHz	$\pm 5.5$ dB
5	All emissions,radiated(>1G) 6GHz-26GHz	$\pm 5.8$ dB



2. GENERAL INFORMATION

2.1 GENERAL DESCRIPTION OF THE EUT

Product Name	DTEN D7																																					
Brand Name	DTEN																																					
Model Name	DB50455																																					
Series Model	N/A																																					
Product Differences	N/A																																					
Product Description	The EUT is a DTEN D7  ITE equipment having a primary function of either (or a combination of) entry, storage, display, retrieval, transmission, processing, switching, or control of data and/or telecommunication messages and which may be equipped with one or more ports typically for information transfer.																																					
Frequency Bands	WLAN	2.4GHz IEEE 802.11b/g/n(HT20):2412~2462MHz 2.4GHz IEEE 802.11n(HT40):2422~2452MHz 5GHz IEEE 802.11a/n/ac(20MHz): 5180~5700MHz 5GHz IEEE 802.11n/ac(40MHz): 5190~5670MHz 5GHz IEEE 802.11ac(80MHz): 5210~5610MHz																																				
	Bluetooth	2402~ 2480MHz																																				
Modulation Mode	WLAN	2.4GHz: 802.11b(DSSS):CCK,DQPSK,DBPSK 802.11g(OFDM):BPSK,QPSK,16-QAM,64-QAM 802.11n(OFDM):BPSK,QPSK,16-QAM,64-QAM 5GHz: 802.11a(OFDM): BPSK,QPSK,16-QAM,64-QAM 802.11n(OFDM): BPSK,QPSK,16-QAM,64-QAM 802.11ac(OFDM): BPSK,QPSK,16-QAM,64-QAM,256-QAM																																				
	Bluetooth	BT(1Mbps): GFSK BT EDR(2Mbps): $\pi/4$ -DQPSK BT EDR(3Mbps): 8DPSK																																				
	BLE	GFSK																																				
Power Source	Input: 100-240V~ 50/60Hz 3.0A Output:  2.2.1 Table 2 Constant Voltage Output Specification (恒压输出规格)																																					
	<table border="1"> <thead> <tr> <th>Output Channel 输出通道</th> <th>Output Rated Voltage 输出额定电压</th> <th>Voltage Regulation 电压调整率</th> <th>Min. current 最小电流</th> <th>Rated current 额定电流</th> <th>Peak current 峰值电流</th> </tr> </thead> <tbody> <tr> <td>STB</td> <td>+5V</td> <td>±5%</td> <td>0.03A</td> <td>1.0A</td> <td>2.0A</td> </tr> <tr> <td>V5</td> <td>+5V</td> <td>±5%</td> <td>0.1A</td> <td>2.5A</td> <td>3.0A</td> </tr> <tr> <td>V12</td> <td>+12V</td> <td>±10%</td> <td>0.1A</td> <td>3.0A</td> <td>4.0A</td> </tr> <tr> <td>V19</td> <td>+19V</td> <td>±10%</td> <td>0.1A</td> <td>5.0A</td> <td>6.5A</td> </tr> <tr> <td>V24</td> <td>+24V</td> <td>±10%</td> <td>0.1A</td> <td>1.0A</td> <td>1.2A</td> </tr> </tbody> </table>		Output Channel 输出通道	Output Rated Voltage 输出额定电压	Voltage Regulation 电压调整率	Min. current 最小电流	Rated current 额定电流	Peak current 峰值电流	STB	+5V	±5%	0.03A	1.0A	2.0A	V5	+5V	±5%	0.1A	2.5A	3.0A	V12	+12V	±10%	0.1A	3.0A	4.0A	V19	+19V	±10%	0.1A	5.0A	6.5A	V24	+24V	±10%	0.1A	1.0A	1.2A
Output Channel 输出通道	Output Rated Voltage 输出额定电压	Voltage Regulation 电压调整率	Min. current 最小电流	Rated current 额定电流	Peak current 峰值电流																																	
STB	+5V	±5%	0.03A	1.0A	2.0A																																	
V5	+5V	±5%	0.1A	2.5A	3.0A																																	
V12	+12V	±10%	0.1A	3.0A	4.0A																																	
V19	+19V	±10%	0.1A	5.0A	6.5A																																	
V24	+24V	±10%	0.1A	1.0A	1.2A																																	
Hardware Version Number	CV3458H-J																																					
Software Version Number	1.1.0.3																																					

Note: For a more detailed features description, please refer to the manufacturer's specifications or the User's Manual.

## 2.2 DESCRIPTION OF THE TEST MODES

To investigate the maximum EMI emission characteristics generates from EUT, the test system was pre-scanning tested base on the consideration of following EUT operation mode or test configuration mode which possible have effect on EMI emission level. Each of these EUT operation mode(s) or test configuration mode(s) mentioned above was evaluated respectively.

Pretest Mode	Description
Mode 1	Camera + WLAN Link(2.4G) + BT Link + LAN + HDMI OUT + U Disk
Mode 2	Camera + WLAN Link(5G) + BT Link + LAN + HDMI OUT + U Disk

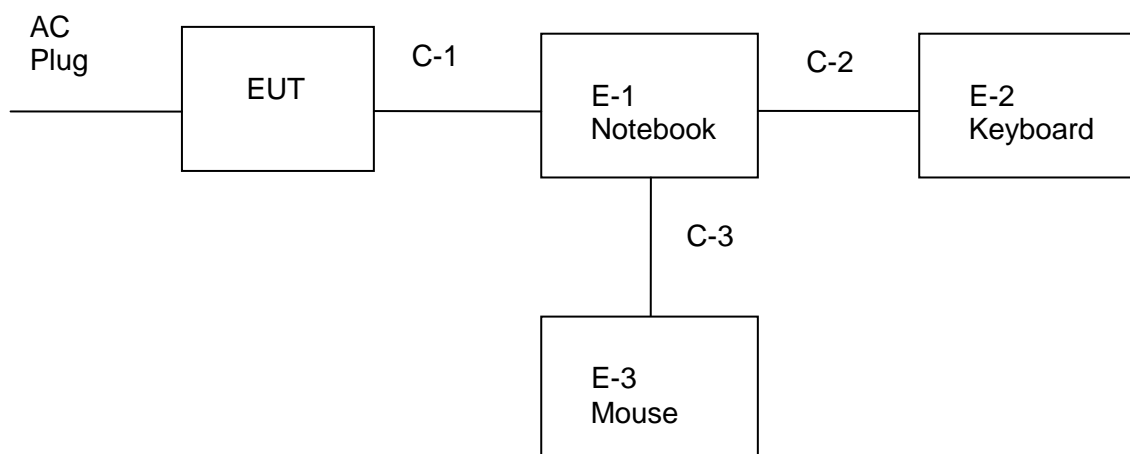
For Conducted Test	
Final Test Mode	Description
Mode 1	Camera + WLAN Link(2.4G) + BT Link + LAN + HDMI OUT + U Disk

For Radiated Test	
Final Test Mode	Description
Mode 1	Camera + WLAN Link(2.4G) + BT Link + LAN + HDMI OUT + U Disk

**Note:**

1. For conducted emission test, test mode 1 was the worst case and only this mode was presented in this report.
2. For radiated emission test, test mode 1 was the worst case and only this mode was presented in this report.

## 2.3 BLOCK DIGRAM SHOWING THE CONFIGURATION OF THE SYSTEM TESTED





## 2.4 DESCRIPTION OF THE SUPPORT UNITS

The EUT has been tested as an independent unit together with other necessary accessories or support units. The following support units or accessories were used to form a representative test configuration during the tests.

### Accessories equipment

Item	Equipment	Mfr/Brand	Model/Type No.
N/A	N/A	N/A	N/A

### Auxiliary equipment

Item	Equipment	Mfr/Brand	Model/Type No.
E-1	Notebook	LENOVO	IdeaPad S410
E-2	Keyboard	Acer	SK-9624
E-3	Mouse	HP	MODGUO

### Cable

Item	Type	Shielded Type	Ferrite Core	Length
C-1	HDMI Cable	Shielded	NO	130cm
C-2	USB Cable (FTP)	Shielded	NO	180cm
C-3	USB Cable (FTP)	Shielded	NO	180cm

### Note:

- (1) The support equipment was authorized by Declaration of Confirmation.
- (2) For detachable type I/O cable should be specified the length in cm in 『Length』 column.
- (3) “YES” is means “shielded” “with core”; “NO” is means “unshielded” “without core”.
- (4) PC is the FCC DOC is approved.





## 2.5 EQUIPMENTS LIST FOR ALL TEST ITEMS

The EUT has been tested as an independent unit together with other necessary accessories or support units. The following support units or accessories were used to form a representative test configuration during the tests.

### Radiation Test equipment

Kind of Equipment	Manufacturer	Type No.	Serial No.	Last Calibration	Calibrated Until
EMI Test Receiver	R&S	ESCI	101427	2019.10.09	2020.10.08
Bi-log Antenna	TESEQ	CBL6111D	34678	2017.11.02	2020.11.01
Horn Antenna	SCHWARZB ECK	BBHA 9120D	9120D-1343	2018.10.19	2021.10.18
Pre-amplifier(1G-26.5G)	Agilent	8449B	3008A02383	2019.10.11	2020.10.10
Pre-amplifier(0.1M-3 GHz)	EM	EM330	060665	2019.10.09	2020.10.08
Spectrum Analyzer	Agilent	N9020A	MY49100060	2019.10.09	2020.10.08
RE Cable (9K-1G)	N/A	R01	N/A	2019.10.12	2020.10.11
RE Cable (1G-26G)	N/A	R02	N/A	2019.10.12	2020.10.11
Temperature & Humidity	Mieo	HH660	N/A	2019.10.12	2020.10.11
Horn Antenna(18-40GHz)	A-INFO	LB-180400-KF	J211020657	2018.03.11	2021.03.10
Testing Software	EZ-EMC(Ver.STSLAB-03A1 RE)				

### Conduction Test equipment

Kind of Equipment	Manufacturer	Type No.	Serial No.	Last Calibration	Calibrated Until
EMI Test Receiver	R&S	ESCI	101427	2019.10.09	2020.10.08
LISN	R&S	ENV216	101242	2019.10.09	2020.10.08
LISN	ETS	3810/2NM	00023625	2019.10.09	2020.10.08
Absorbing Clamp	R&S	MDS-21	100668	2019.10.09	2020.10.08
CE Cable	N/A	C01	N/A	2019.10.12	2020.10.11
Temperature & Humidity	Mieo	HH660	N/A	2019.10.12	2020.10.11
Testing Software	EZ-EMC(Ver.STSLAB-03A1 CE)				



### 3. EMC EMISSION TEST

#### 3.1 CONDUCTED EMISSION MEASUREMENT

##### 3.1.1 POWER LINE CONDUCTED EMISSION Limits

FREQUENCY (MHz)	Conducted Emission Limits (dBuV)			
	Class A		Class B	
	Quasi-peak	Average	Quasi-peak	Average
0.15 ~ 0.5	79.00	66.00	66 - 56 *	56 - 46 *
0.5 ~ 5	73.00	60.00	56.00	46.00
5 ~ 30	73.00	60.00	60.00	50.00

Note:

- (1) The tighter limit applies at the band edges.
- (2) The limit of " \* " marked band means the limitation decreases linearly with the logarithm of the frequency in the range.

The following table is the setting of the receiver

Receiver Parameters	Setting
Attenuation	10 dB
Start Frequency	0.15 MHz
Stop Frequency	30 MHz
IF Bandwidth	9 kHz

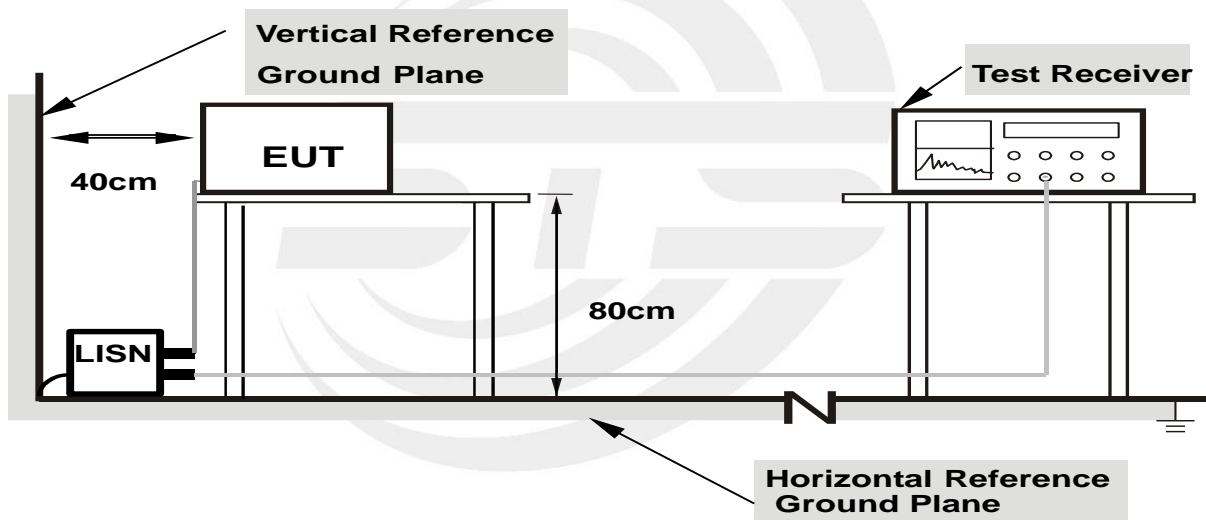
### 3.1.2 TEST PROCEDURE

- a. The EUT was placed 0.4 meters from the conducting wall of the shielded room with EUT being connected to the power mains through a line impedance stabilization network (LISN). Other support units were connected to the power mains through another LISN. The two LISNs provide 50 Ohm/ 50uH of coupling impedance for the measuring instrument.
- b. Interconnecting cables that hang closer than 40 cm to the ground plane shall be folded back and forth in the center forming a bundle 30 to 40 cm long.
- c. I/O cables that are not connected to a peripheral shall be bundled in the center. The end of the cable may be terminated, if required, using the correct terminating impedance. The overall length shall not exceed 1 m.
- d. For the actual test configuration, please refer to the related Item –EUT Test Photos.

### 3.1.3 DEVIATION FROM TEST STANDARD

No deviation

### 3.1.4 TEST SETUP



- Note: 1.Support units were connected to second LISN.**  
**2.Both of LISNs (AMN) are 80 cm from EUT and at least 80 from other units and other metal planes**

### 3.1.5 EUT OPERATING CONDITIONS

The EUT was configured for testing in a typical fashion (as a customer would normally use it). The EUT has been programmed to continuously transmit during test. This operating condition was tested and used to collect the included data.



3.1.6 TEST RESULTS

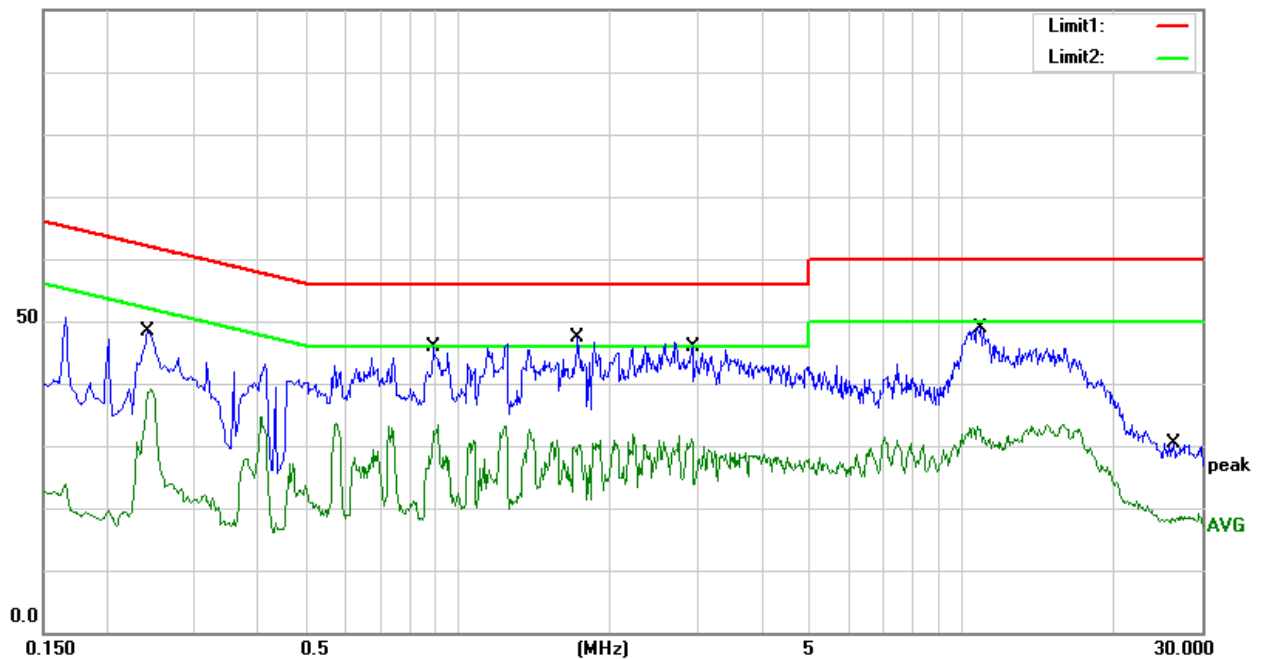
Temperature:	25.4°C	Relative Humidity:	50%
Phase:	L	Test Mode:	Mode 1
Test Voltage:	AC 120V/60Hz	Test Date:	2020.04.28

No.	Frequency (MHz)	Reading (dBuV)	Correct Factor (dB)	Result (dBuV)	Limit (dBuV)	Margin (dB)	Detector
1	0.2420	28.34	20.01	48.35	62.03	-13.68	QP
2	0.2420	19.21	20.01	39.22	52.03	-12.81	AVG
3	0.8940	26.00	19.77	45.77	56.00	-10.23	QP
4	0.8940	13.61	19.77	33.38	46.00	-12.62	AVG
5	1.7340	27.51	19.80	47.31	56.00	-8.69	QP
6	1.7340	10.67	19.80	30.47	46.00	-15.53	AVG
7	2.9180	25.97	19.85	45.82	56.00	-10.18	QP
8	2.9180	11.71	19.85	31.56	46.00	-14.44	AVG
9	10.9380	28.95	19.85	48.80	60.00	-11.20	QP
10	10.9380	13.31	19.85	33.16	50.00	-16.84	AVG
11	26.3300	10.12	20.14	30.26	60.00	-29.74	QP
12	26.3300	-1.40	20.14	18.74	50.00	-31.26	AVG

Remark:

1. All readings are Quasi-Peak and Average values
2. Margin = Result (Result = Reading + Factor) – Limit
3. Factor = Insertion loss + Cable loss

100.0 dBuV





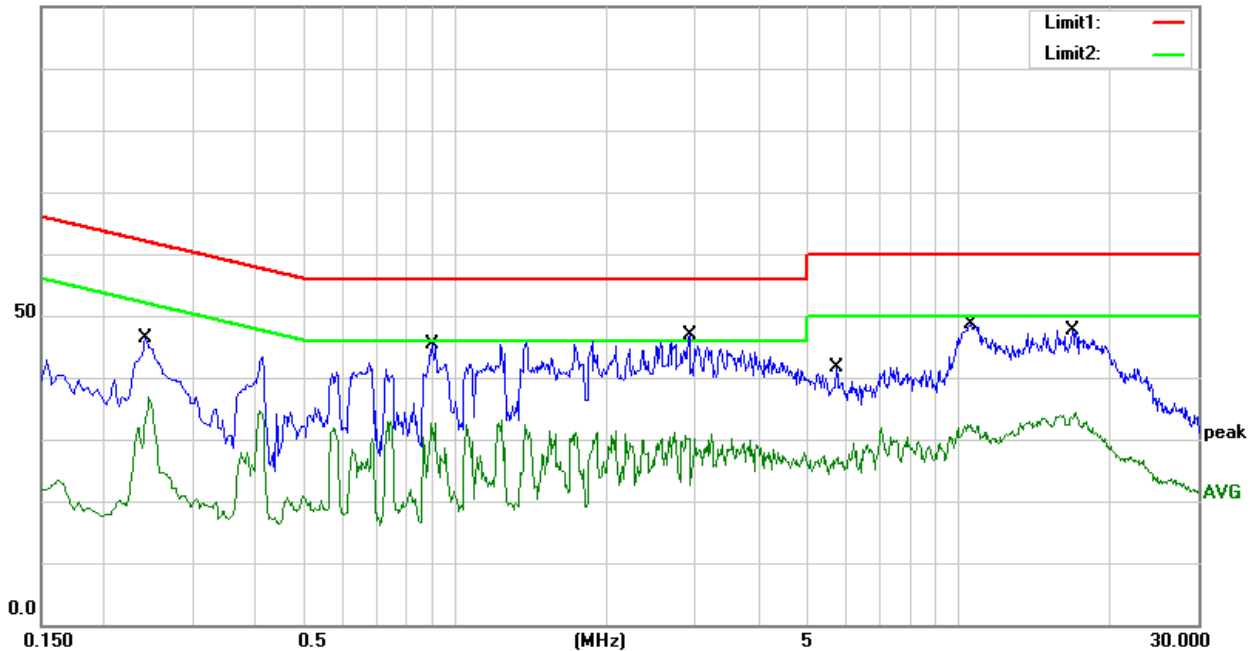
Temperature:	25.4°C	Relative Humidity:	50%
Phase:	N	Test Mode:	Mode 1
Test Voltage:	AC 120V/60Hz	Test Date:	2020.04.28

No.	Frequency (MHz)	Reading (dBuV)	Correct Factor (dB)	Result (dBuV)	Limit (dBuV)	Margin (dB)	Detector
1	0.2420	26.38	20.01	46.39	62.03	-15.64	QP
2	0.2420	16.83	20.01	36.84	52.03	-15.19	AVG
3	0.9020	25.60	19.77	45.37	56.00	-10.63	QP
4	0.9020	12.90	19.77	32.67	46.00	-13.33	AVG
5	2.9220	26.96	19.85	46.81	56.00	-9.19	QP
6	2.9220	11.27	19.85	31.12	46.00	-14.88	AVG
7	5.7300	21.69	19.83	41.52	60.00	-18.48	QP
8	5.7300	7.65	19.83	27.48	50.00	-22.52	AVG
9	10.5660	28.70	19.84	48.54	60.00	-11.46	QP
10	10.5660	12.42	19.84	32.26	50.00	-17.74	AVG
11	16.8700	27.57	20.07	47.64	60.00	-12.36	QP
12	16.8700	14.42	20.07	34.49	50.00	-15.51	AVG

Remark:

1. All readings are Quasi-Peak and Average values
2. Margin = Result (Result = Reading + Factor) – Limit
3. Factor = Insertion loss + Cable loss

100.0 dBuV



Note: The test voltage is 100-240V, both of which have assessment tests, and the worst test data is in the report.



### 3.2 RADIATED EMISSION MEASUREMENT

#### 3.2.1 Radiated Emission Limits

Class A: ITE that meets the conditions for Class A operation defined in Section 2.2 shall comply with the Class A radiated limits set out in Table 4 determined at a distance of 3 metres.

##### Class A Radiated Limits Below 1 GHz:

Frequencies (MHz)	Class A (dB $\mu$ V/m)
	Quasi-peak
30 ~ 88	49.5
88 ~ 216	53.9
216 ~ 960	56.9
960 ~ 1000	60

Class B: ITE that does not meet the conditions for Class A operation shall comply with the Class B radiated limits set out in Table 5 determined at a distance of 3 metres.

##### Class B Radiated Limits Below 1 GHz:

Frequencies (MHz)	Class B (dB $\mu$ V/m)
	Quasi-peak
30 ~ 88	40
88 ~ 216	43.5
216 ~ 960	46
960 ~ 1000	54

In case the emission 109(a) limit in the table below has to be followed.

Frequencies (MHz)	Field Strength (micorvolts/meter)	Measurement Distance (meters)
30 ~ 88	100	3
88 ~ 216	150	3
216 ~ 960	200	3
Above 960	500	3



## LIMITS OF RADIATED EMISSION MEASUREMENT

FREQUENCY (MHz)	Class A (dBuV/m) (at 3M)		Class B (dBuV/m) (at 3M)	
	PEAK	AVERAGE	PEAK	AVERAGE
Above 1000	80	60	74	54

Note:

- (1) The limit for radiated test was performed in the following: FCC PART 15B.
- (2) The tighter limit applies at the band edges.
- (3) Emission level (dBuV/m) = 20log Emission level (uV/m).

## FREQUENCY RANGE OF THE RADIATED MEASUREMENT (For unintentional radiators)

Highest frequency generated or Upper frequency of measurement used in the device or on which the device operates or tunes (MHz)	Range (MHz)
Below 1.705	30
1.705 ~ 108	1000
108 ~ 500	2000
500 ~ 1000	5000
Above 1000	5th harmonic of the highest frequency or 40 GHz, whichever is lower



Spectrum Parameter	Setting
Attenuation	Auto
Detector	Peak
Start Frequency	1000 MHz(Peak/AV)
Stop Frequency	5th harmonic (Peak/AV)
RB / VB (emission in restricted band)	30MHz to 1000MHz: 100 KHz / 300 KHz Above 1000MHz: 1 MHz / 3 MHz

Receiver Parameter	Setting
Attenuation	Auto
Start ~ Stop Frequency	30MHz to 1000MHz: 100 KHz / 300 KHz Above 1000MHz: 1 MHz / 3 MHz

### 3.2.2 TEST PROCEDURE

- The EUT was placed on the top of a rotating table 0.8 meters above the ground at a 3 meter semi-anechoic chamber room. The table was rotated 360 degrees to determine the position of the highest radiation.
- EUT as the center to the edge of the auxiliary device, the distance from the maximum edge to the center of the antenna is 3 meters.
- The height of antenna is varied from 1 meter to 4 meters above the ground to determine the maximum value of the field strength. Both horizontal and vertical polarizations of the antenna are set to make the measurement.
- For each suspected emission, the EUT was arranged to its worst case and then the antenna was tuned to heights from 1 meter to 4 meters and the rotatable table was turned from 0 degrees to 360 degrees to find the maximum reading.
- The test-receiver system was set to quasi-peak detect function and specified bandwidth with maximum hold mode when the test frequency is below 1GHz.
- For the actual test configuration, please refer to the related Item –EUT Test Photos.

Note: Both horizontal and vertical antenna polarities were tested and performed pretest to three orthogonal axis. The worst case emissions were reported

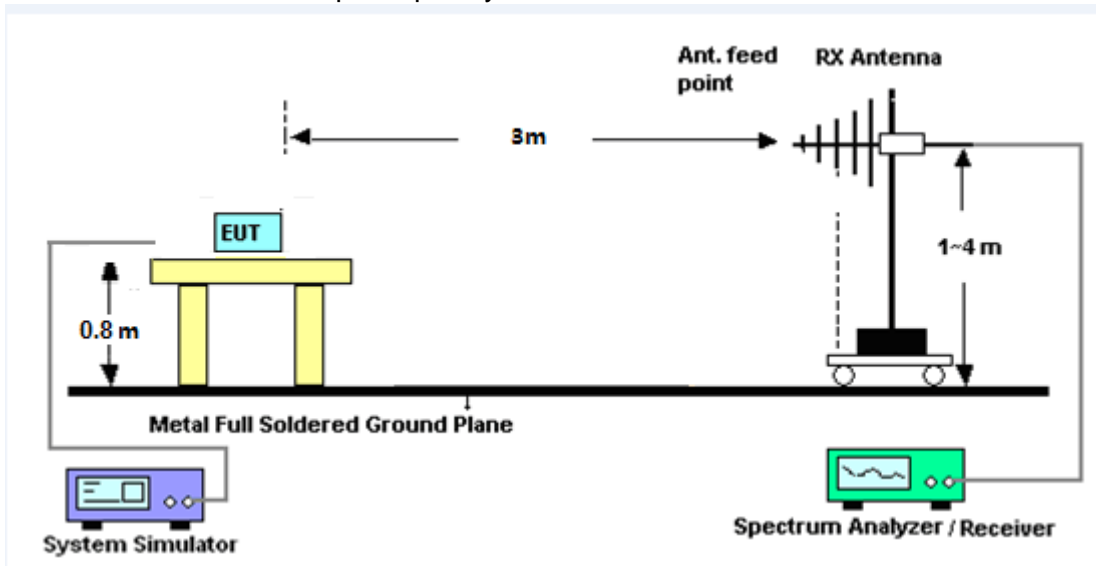
### 3.2.3 DEVIATION FROM TEST STANDARD

No deviation

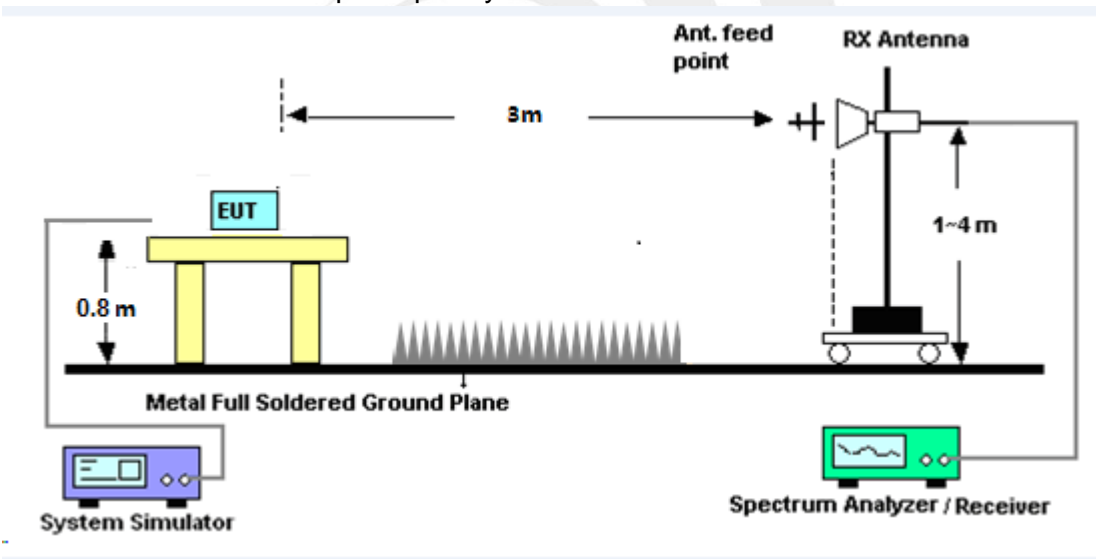


### 3.2.4 TEST SETUP

(A) Radiated Emission Test-Up Frequency Below 1 GHz



(B) Radiated Emission Test-Up Frequency Above 1GHz



### 3.2.5 EUT OPERATING CONDITIONS

The EUT tested system was configured as the statements of 2.4 Unless otherwise a special operating condition is specified in the following during the testing.



3.2.6 TEST RESULTS

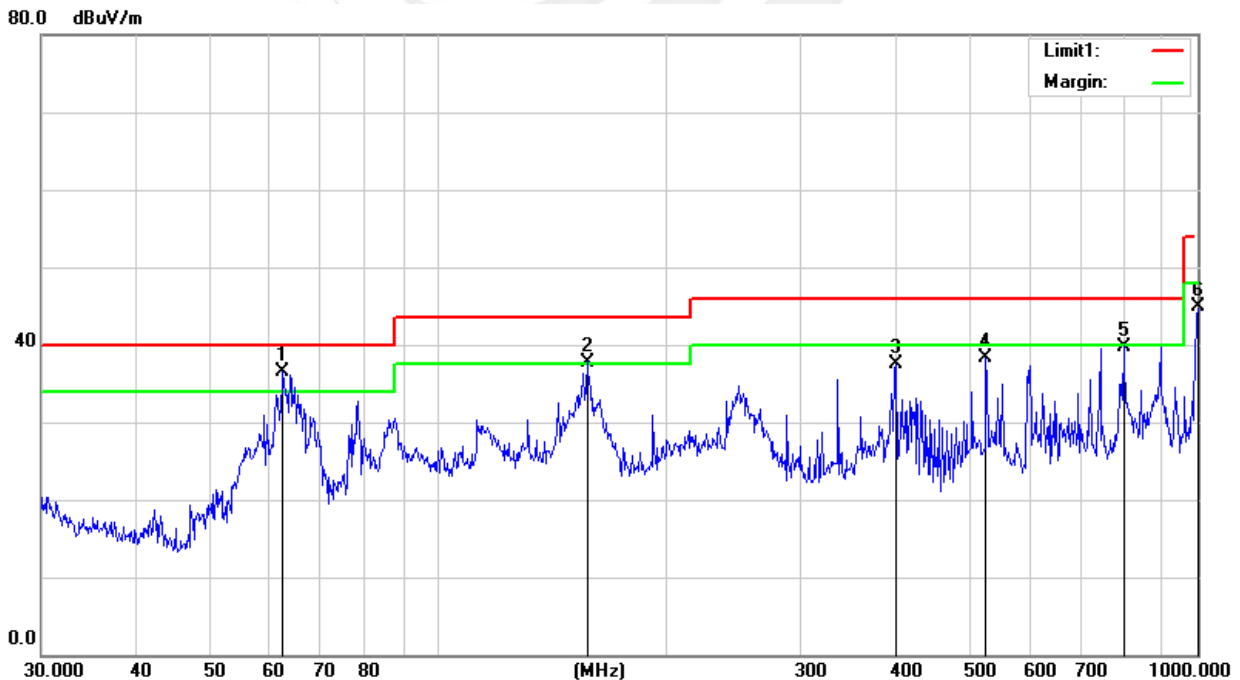
30MHz -1000MHz

Temperature:	24.5°C	Relative Humidity:	55%
Phase:	Horizontal	Test Mode:	Mode 1
Test Voltage:	AC 120V/60Hz	Test Date:	2020.06.24

No.	Frequency (MHz)	Reading (dBuV)	Correct Factor (dB)	Results (dBuV/m)	Limit (dBuV/m)	Margin (dB)	Detector
1	62.4313	63.31	-26.71	36.60	40.00	-3.40	QP
2	157.0072	56.05	-18.25	37.80	43.50	-5.70	QP
3	400.4318	51.54	-14.03	37.51	46.00	-8.49	QP
4	526.3967	50.57	-12.27	38.30	46.00	-7.70	QP
5	798.9796	50.74	-10.94	39.80	46.00	-6.20	QP
6	1000.0000	52.08	-7.13	44.95	54.00	-9.05	QP

Remark:

1. All readings are Quasi-Peak
2. Margin = Result (Result =Reading + Factor)–Limit
3. Factor= Cable Loss +Antenna Factor–Amplifier Gain





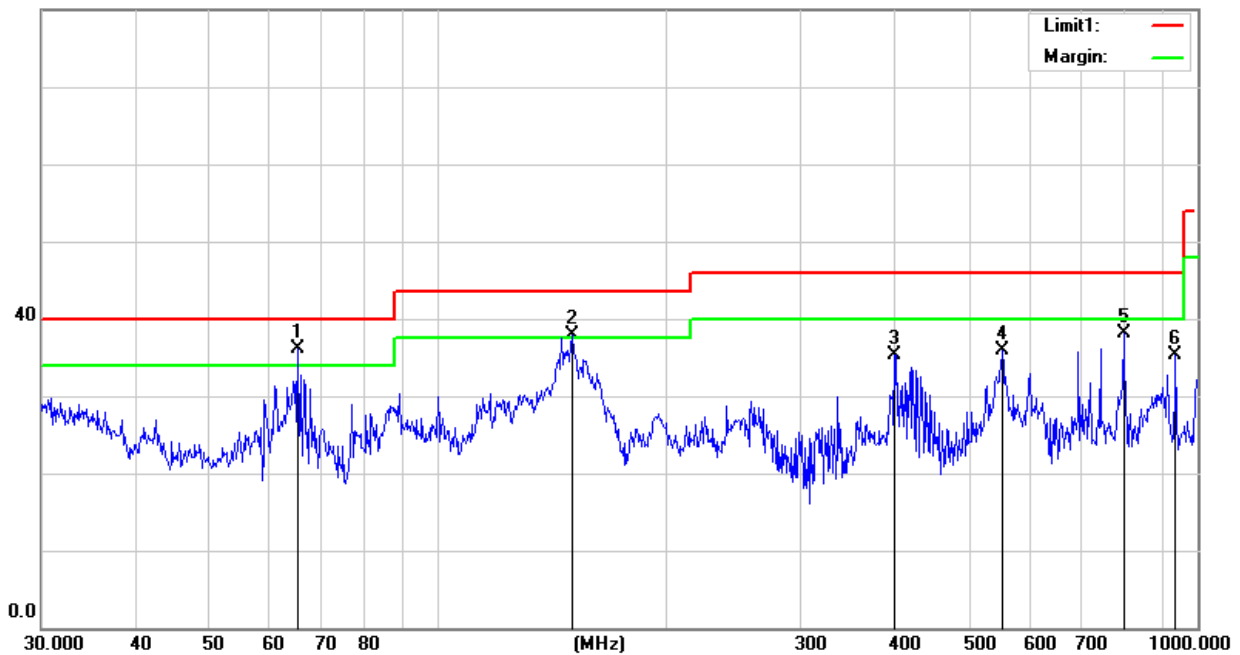
Temperature:	24.5°C	Relative Humidity:	55%
Phase:	Vertical	Test Mode:	Mode 1
Test Voltage:	AC 120V/60Hz	Test Date:	2020.06.24

No.	Frequency (MHz)	Reading (dBuV)	Correct Factor (dB)	Results (dBuV/m)	Limit (dBuV/m)	Margin (dB)	Detector
1	65.3431	62.87	-26.74	36.13	40.00	-3.87	QP
2	150.0107	54.39	-16.47	37.92	43.50	-5.58	QP
3	399.0300	49.48	-14.12	35.36	46.00	-10.64	QP
4	552.8831	46.66	-10.71	35.95	46.00	-10.05	QP
5	798.9796	49.07	-10.94	38.13	46.00	-7.87	QP
6	935.5461	42.68	-7.41	35.27	46.00	-10.73	QP

Remark:

1. All readings are Quasi-Peak
2. Margin = Result (Result = Reading + Factor) – Limit
3. Factor = Cable Loss + Antenna Factor - Amplifier Gain

80.0 dBuV/m





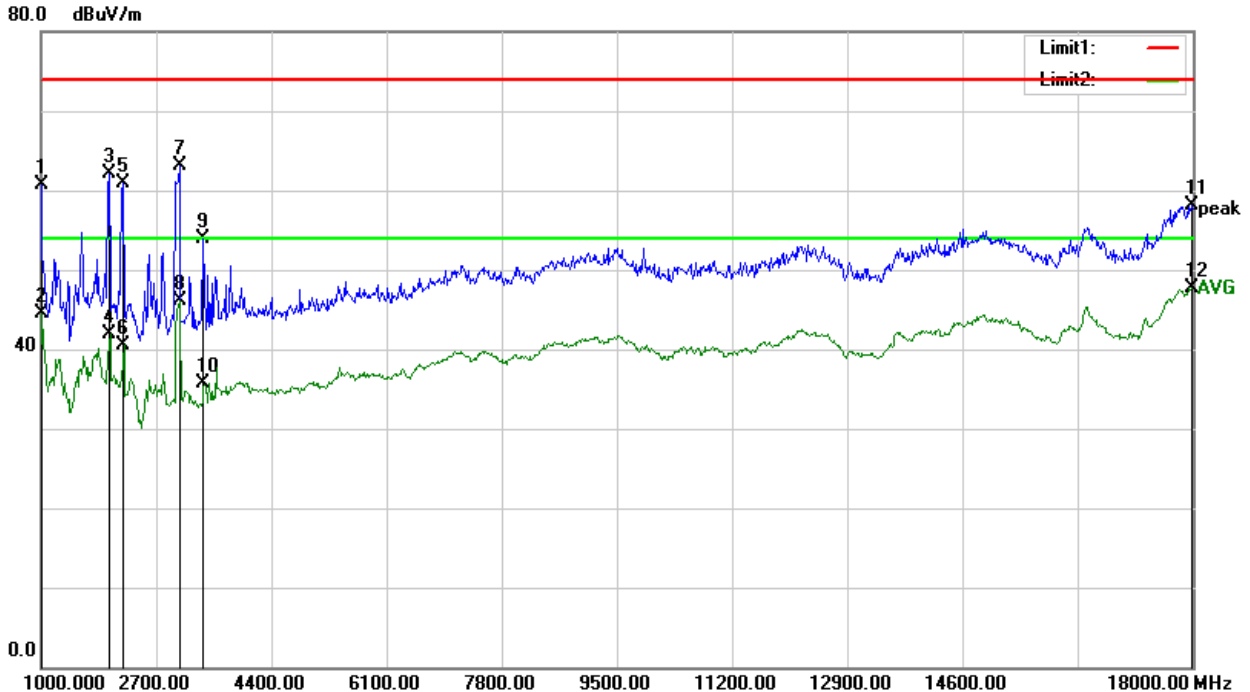
(1 GHz to 18GHz.)

Temperature:	24.5°C	Relative Humidity:	55%
Phase:	Horizontal	Test Mode:	Mode 1
Test Voltage:	AC 120V/60Hz	Test Date:	2020.06.24

No.	Frequency (MHz)	Reading (dBuV)	Correct Factor (dB)	Result (dBuV)	Limit (dBuV)	Margin (dB)	Remark
1	1000.0000	64.64	-3.95	60.69	74.00	-13.31	Peak
2	1000.0000	48.48	-3.95	44.53	54.00	-9.47	AVG
3	2003.000	66.18	-4.12	62.06	74.00	-11.94	Peak
4	2003.000	46.05	-4.12	41.93	54.00	-12.07	AVG
5	2207.000	64.90	-3.92	60.98	74.00	-13.02	Peak
6	2207.000	44.35	-3.92	40.43	54.00	-13.57	AVG
7	3040.000	64.75	-1.60	63.15	74.00	-10.85	Peak
8	3040.000	47.76	-1.60	46.16	54.00	-7.84	AVG
9	3380.000	55.40	-1.58	53.82	74.00	-20.18	Peak
10	3380.000	37.30	-1.58	35.72	54.00	-18.28	AVG
11	17983.000	42.30	15.88	58.18	74.00	-15.82	Peak
12	17983.000	31.90	15.88	47.78	54.00	-6.22	AVG

Remark:

1. All readings are Peak and Average values
2. Margin = Result (Result = Reading + Factor) - Limit
3. Factor = Cable Loss + Antenna Factor - Amplifier Gain





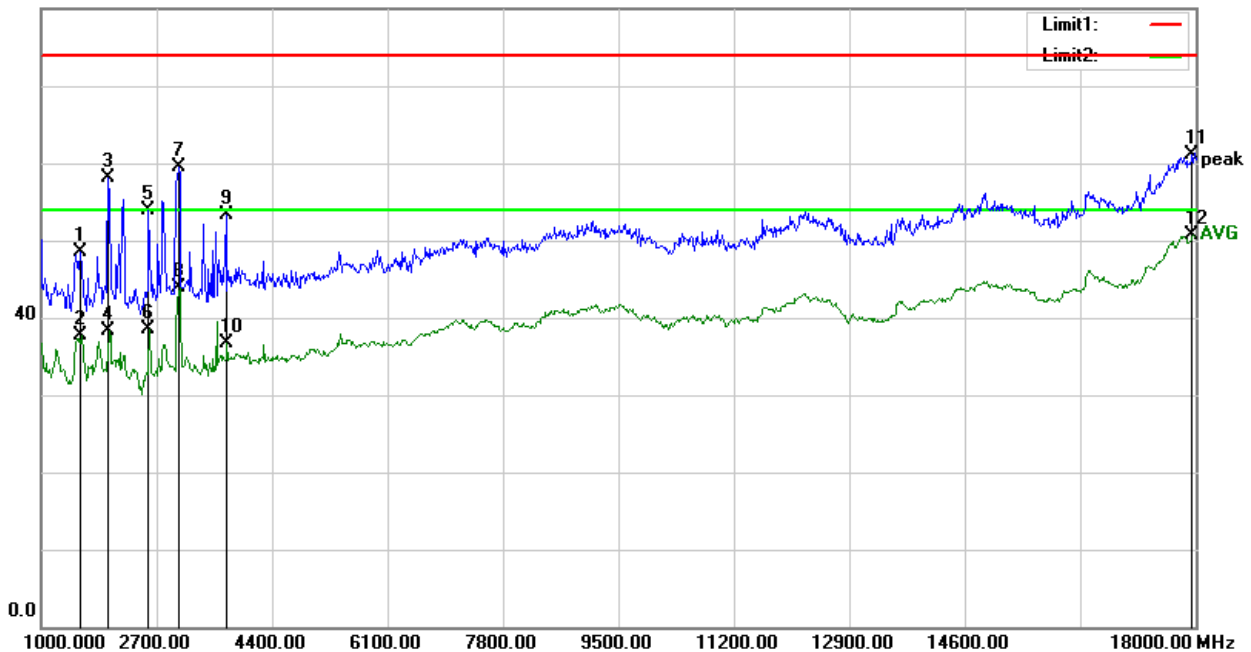
Temperature:	24.5°C	Relative Humidity:	55%
Phase:	Vertical	Test Mode:	Mode 1
Test Voltage:	AC 120V/60Hz	Test Date:	2020.06.24

No.	Frequency (MHz)	Reading (dBUV)	Correct Factor (dB)	Result (dBUV)	Limit (dBUV)	Margin (dB)	Remark
1	1578.000	53.87	-5.34	48.53	74.00	-25.47	Peak
2	1578.000	43.02	-5.34	37.68	54.00	-16.32	AVG
3	1986.000	62.27	-4.14	58.13	74.00	-15.87	Peak
4	1986.000	42.38	-4.14	38.24	54.00	-15.76	AVG
5	2581.000	57.36	-3.52	53.84	74.00	-20.16	Peak
6	2581.000	41.99	-3.52	38.47	54.00	-15.53	AVG
7	3023.000	60.99	-1.57	59.42	74.00	-14.58	Peak
8	3023.000	45.45	-1.57	43.88	54.00	-10.12	AVG
9	3720.000	53.60	-0.32	53.28	74.00	-20.72	Peak
10	3720.000	37.10	-0.32	36.78	54.00	-17.22	AVG
11	17949.000	45.35	15.67	61.02	74.00	-12.98	Peak
12	17949.000	34.94	15.67	50.61	54.00	-3.39	AVG

Remark:

1. All readings are Peak and Average values
2. Margin = Result (Result = Reading + Factor) - Limit
3. Factor = Cable Loss + Antenna Factor - Amplifier Gain

80.0 dBUV/m





(18 GHz to 25GHz.)

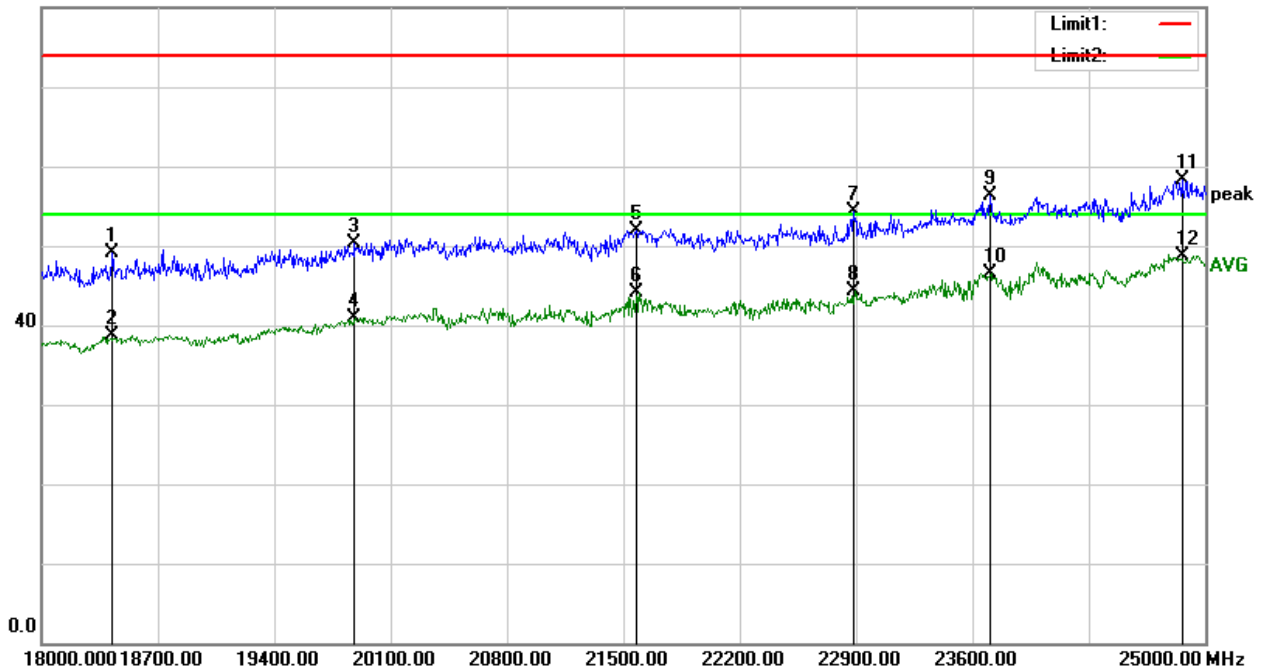
Temperature:	24.1°C	Relative Humidity:	44%
Phase:	Horizontal	Test Mode:	Mode 1
Test Voltage:	AC 120V/60Hz	Test Date:	2020.06.24

No.	Frequency (MHz)	Reading (dBuV)	Correct Factor (dB)	Result (dBuV)	Limit (dBuV)	Margin (dB)	Remark
1	18427.000	24.24	24.87	49.11	74.00	-24.89	Peak
2	18427.000	13.75	24.87	38.62	54.00	-15.38	AVG
3	19883.000	25.49	24.87	50.36	74.00	-23.64	Peak
4	19883.000	16.13	24.87	41.00	54.00	-13.00	AVG
5	21577.000	27.18	24.71	51.89	74.00	-22.11	Peak
6	21577.000	19.30	24.71	44.01	54.00	-9.99	AVG
7	22886.000	29.73	24.52	54.25	74.00	-19.75	Peak
8	22886.000	19.84	24.52	44.36	54.00	-9.64	AVG
9	23705.000	31.53	24.77	56.30	74.00	-17.70	Peak
10	23705.000	21.82	24.77	46.59	54.00	-7.41	AVG
11	24860.000	33.25	24.96	58.21	74.00	-15.79	Peak
12	24860.000	23.70	24.96	48.66	54.00	-5.34	AVG

Remark:

1. All readings are Peak and Average values
2. Margin = Result (Result = Reading + Factor) – Limit
3. Factor = Cable Loss + Antenna Factor - Amplifier Gain

80.0 dBuV/m





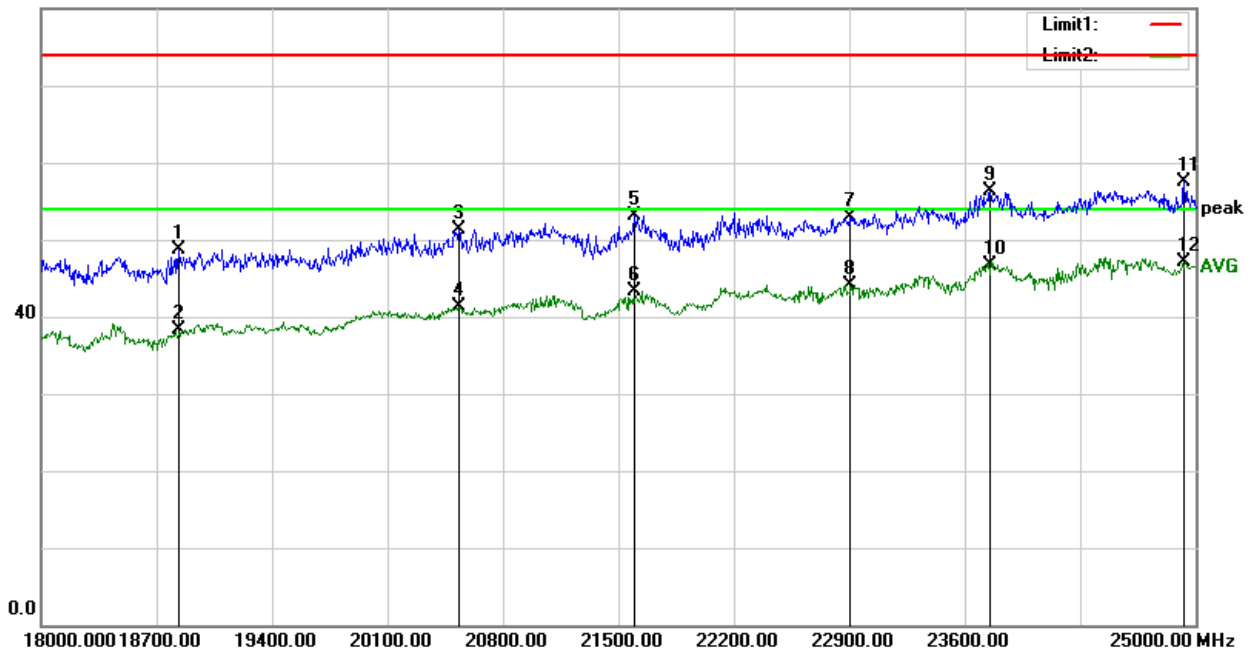
Temperature:	24.1°C	Relative Humidity:	44%
Phase:	Vertical	Test Mode:	Mode 1
Test Voltage:	AC 120V/60Hz	Test Date:	2020.06.24

No.	Frequency (MHz)	Reading (dBuV)	Correct Factor (dB)	Result (dBuV)	Limit (dBuV)	Margin (dB)	Remark
1	18833.000	23.95	24.71	48.66	74.00	-25.34	Peak
2	18833.000	13.60	24.71	38.31	54.00	-15.69	AVG
3	20534.000	26.33	24.94	51.27	74.00	-22.73	Peak
4	20534.000	16.32	24.94	41.26	54.00	-12.74	AVG
5	21598.000	28.49	24.71	53.20	74.00	-20.80	Peak
6	21598.000	18.59	24.71	43.30	54.00	-10.70	AVG
7	22900.000	28.38	24.52	52.90	74.00	-21.10	Peak
8	22900.000	19.63	24.52	44.15	54.00	-9.85	AVG
9	23754.000	31.51	24.79	56.30	74.00	-17.70	Peak
10	23754.000	21.85	24.79	46.64	54.00	-7.36	AVG
11	24930.000	32.59	24.96	57.55	74.00	-16.45	Peak
12	24930.000	22.11	24.96	47.07	54.00	-6.93	AVG

Remark:

1. All readings are Peak and Average values
2. Margin = Result (Result = Reading + Factor) – Limit
3. Factor = Cable Loss + Antenna Factor – Amplifier Gain

80.0 dBuV/m



Notes:

1. Measuring frequencies from 1 GHz to 25GHz.
2. Radiated emissions measured in frequency above 1000MHz were made with an instrument using Peak detector mode of the emission shown in Actual FS column.



## SAMPLE OF THE LABEL



Trade Name

Model Number

This device complies with part 15 of the FCC Rules. Operation is subject to the following two conditions:  
(1) This device may not cause harmful interference. And (2) this device must accept any interference received, including interference that may cause undesired operation.

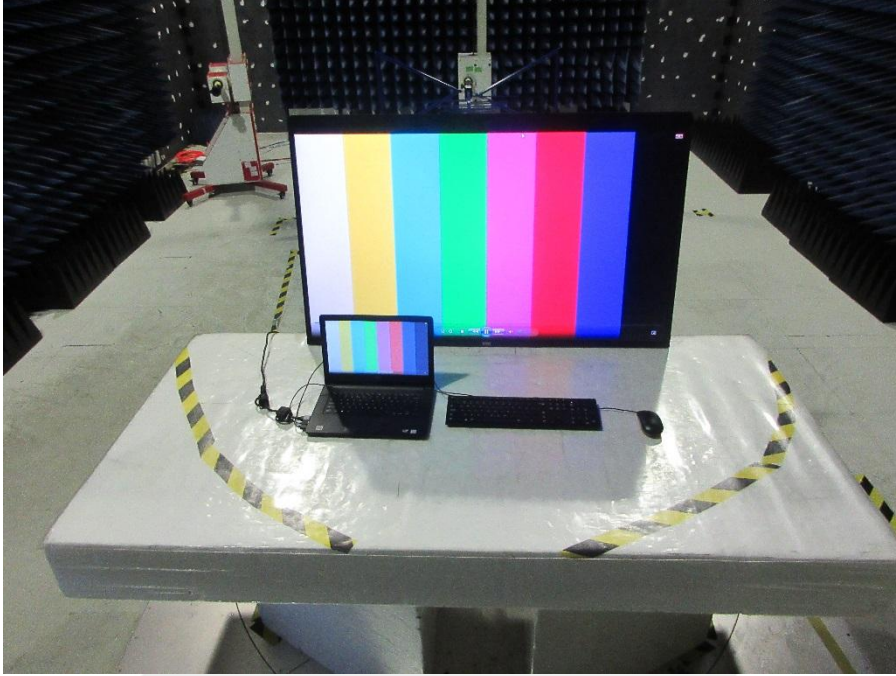




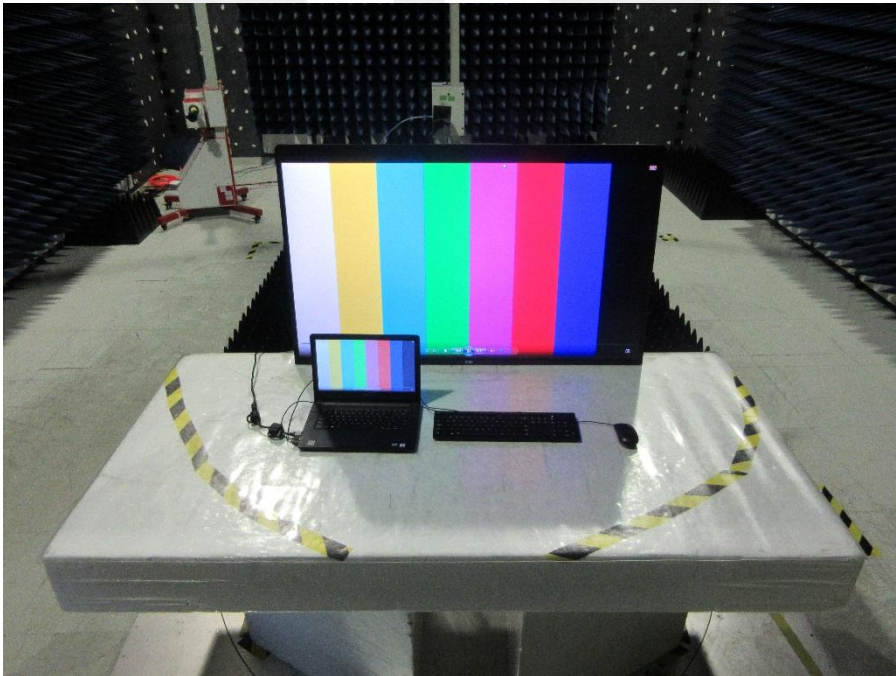
#### 4. PHOTOS OF THE TEST SETUP

##### Radiated Measurement Photo

30MHz- 1GHz



Above 1GHz



Conducted Measurement Photo



\*\*\*\*\*END OF THE REPORT\*\*\*\*\*

