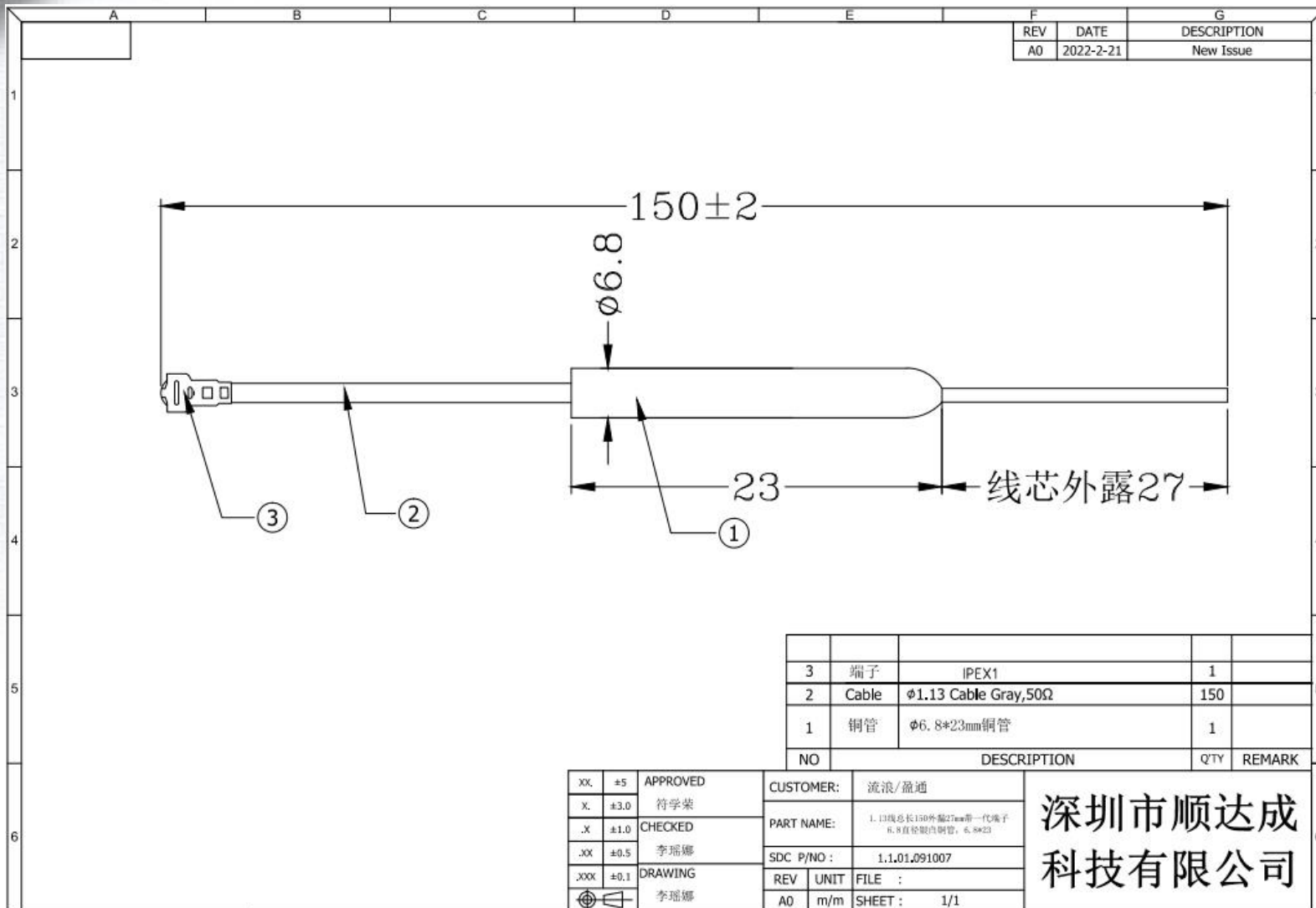




# 天线图档:

顺达成科技



REV	DATE	DESCRIPTION
A0	2022-2-21	New Issue

NO	DESCRIPTION	QTY	REMARK
3	端子 IPEX1	1	
2	Cable $\phi 1.13$ Cable Gray, 50 $\Omega$	150	
1	铜管 $\phi 6.8 \times 23$ mm 铜管	1	

XX	$\pm 5$	APPROVED	CUSTOMER:	流浪/盈通
X	$\pm 3.0$	符学荣	PART NAME:	1. 天线总长150外露27mm带一代端子 6.8直径铜管, 6.8*23
.X	$\pm 1.0$	CHECKED	SDC P/NO :	1.1.01.091007
.XX	$\pm 0.5$	李瑞娜	REV	UNIT
.XXX	$\pm 0.1$	DRAWING	A0	m/m
		李瑞娜	FILE :	SHEET : 1/1

深圳市顺达成  
科技有限公司

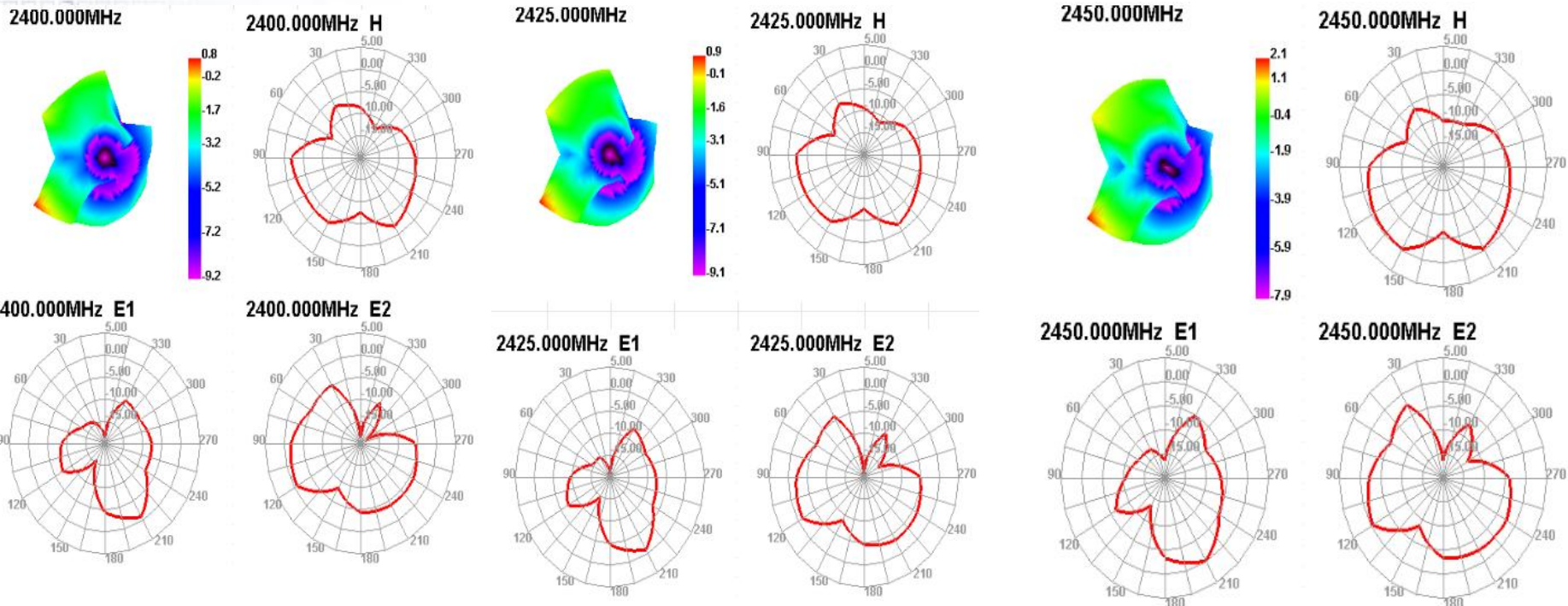


# Gain & Efficiency

顺达成科技

Passive Test For 2.4G

Freq (MHz)	Effi (%)	Effi (dB)	Gain (dBi)	Gain (dBd)	UHIS (%)	DHIS (%)	Max (dB)	Min (dB)	Directivity (dBi)	Beamwidth (3dB)	AttH (dB)	AttV (dB)
2400	38.44	-5.46	0.77	-1.38	12.679	15.766	0.77	-18.83	6.23	0	47.77	47.82
2425	39.79	-5.26	0.87	-1.28	13.617	16.17	0.87	-19.66	6.13	0	48.06	48.12
2450	42.31	-4.06	2.11	-0.04	18.48	20.826	2.11	-18.63	6.17	0	48.56	48.53
2475	43.22	-3.96	2.12	-0.03	18.982	21.237	2.12	-18.5	6.07	0	48.46	48.26
2500	42.7	-3.7	2.01	-0.14	20.32	22.382	2.01	-17.46	5.7	0	48.42	48.12





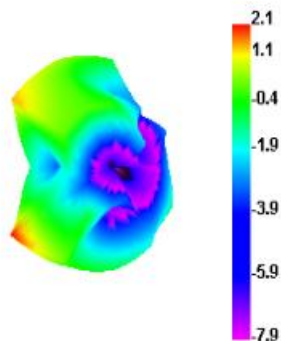
# Gain & Efficiency

顺达成科技

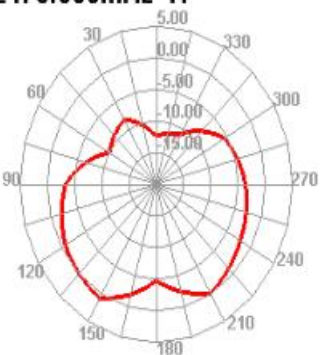
Passive Test For 2.4G

Freq (MHz)	Effi (%)	Effi (dB)	Gain (dBi)	Gain (dBd)	UHIS (%)	DHIS (%)	Max (dB)	Min (dB)	Directivity (dBi)	Beamwidth (3dB)	AttH (dB)	AttV (dB)
2400	38.44	-5.46	0.77	-1.38	12.679	15.766	0.77	-18.83	6.23	0	47.77	47.82
2425	39.79	-5.26	0.87	-1.28	13.617	16.17	0.87	-19.66	6.13	0	48.06	48.12
2450	42.31	-4.06	2.11	-0.04	18.48	20.826	2.11	-18.63	6.17	0	48.56	48.53
2475	43.22	-3.96	2.12	-0.03	18.982	21.237	2.12	-18.5	6.07	0	48.46	48.26
2500	42.7	-3.7	2.01	-0.14	20.32	22.382	2.01	-17.46	5.7	0	48.42	48.12

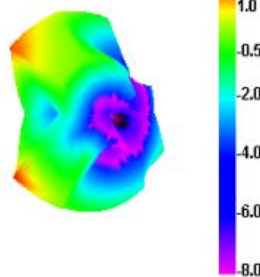
2475.000MHz



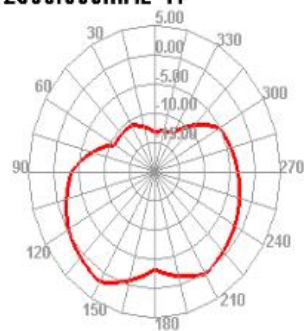
2475.000MHz H



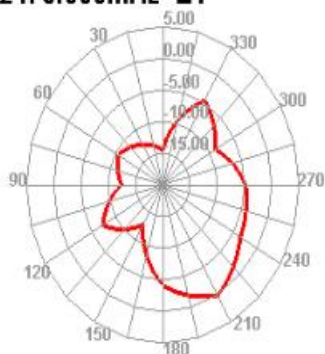
2500.000MHz



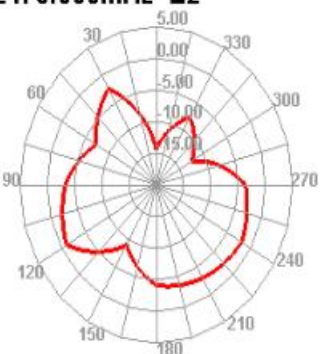
2500.000MHz H



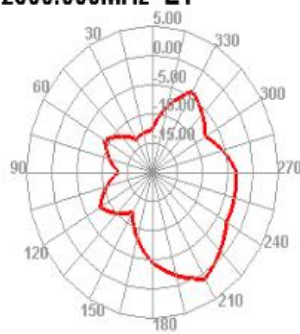
2475.000MHz E1



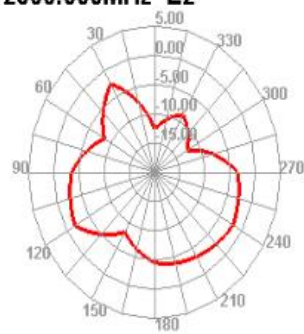
2475.000MHz E2



2500.000MHz E1



2500.000MHz E2





顺达成科技

深圳顺达成科技有限公司

顺达成感谢您的支持

公司地址：深圳市宝安区福永镇重庆路新福工业园B5栋4楼