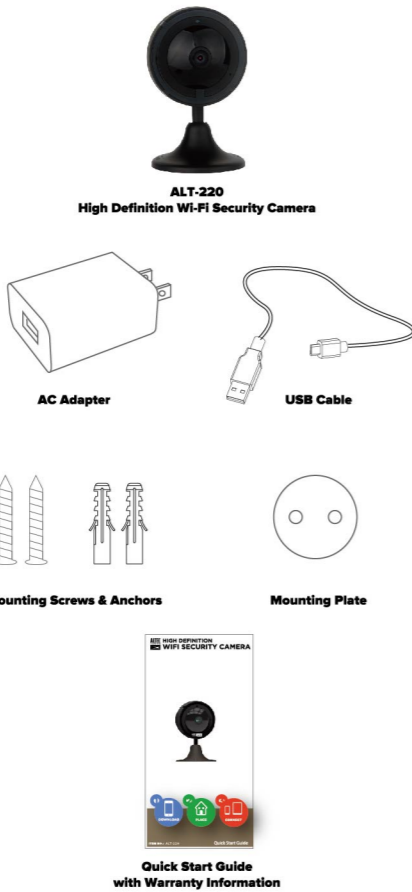


**ALTEC HIGHSOUND**  
**WIFI SECURITY CAMERA**

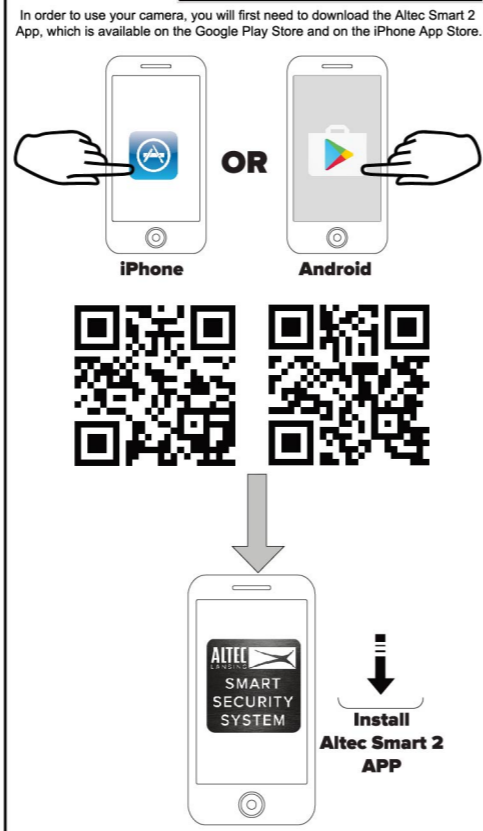


ITEM NO.: ALT-220 Quick Start Guide

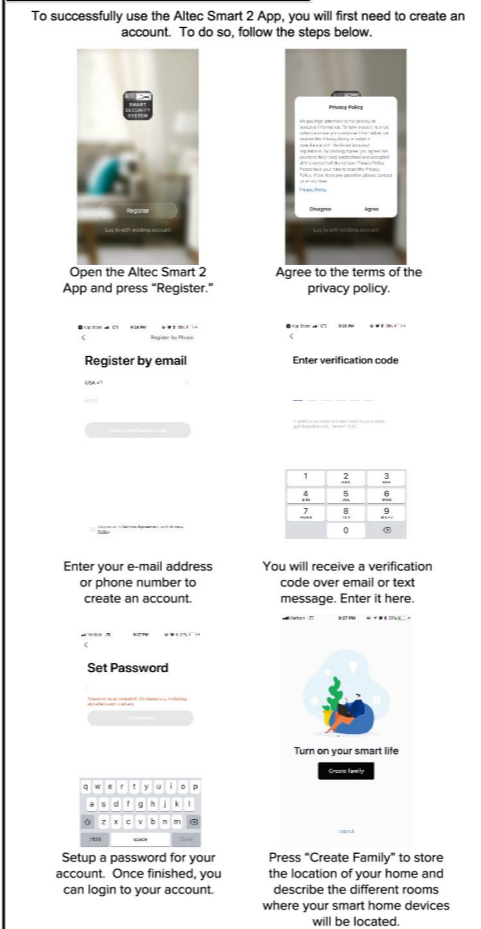
**1. WHAT'S INCLUDED**



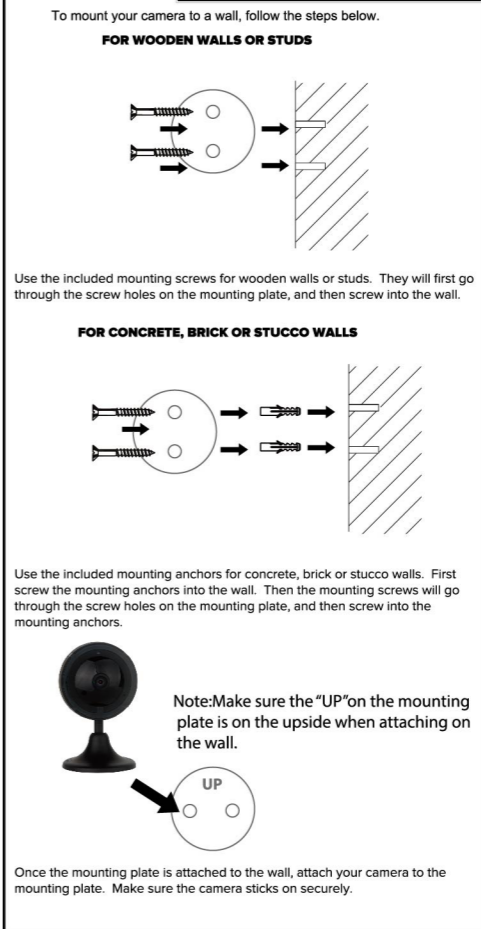
**2. APP INSTALLATION**



**3. APP REGISTRATION**



**4. MOUNTING**



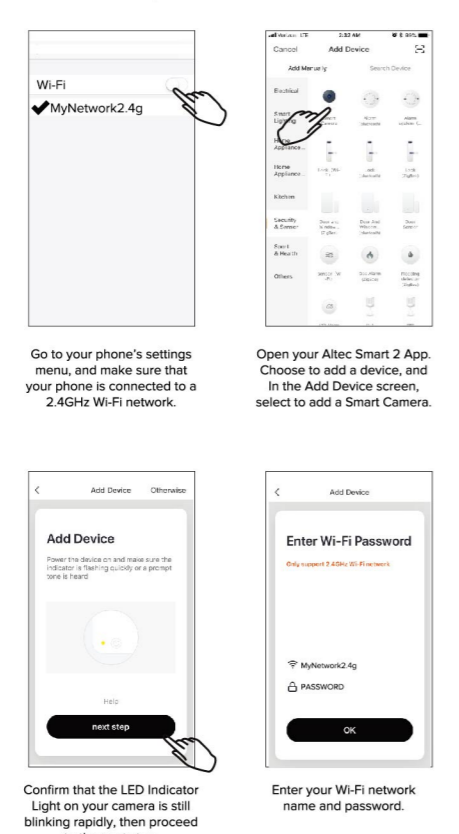
**JUST ASK.**

**5. CAMERA SETUP**

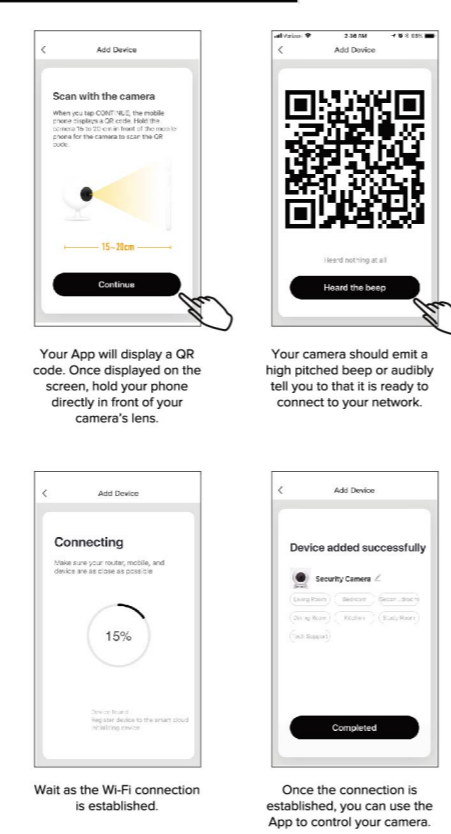


NOTE: If you are having trouble connecting to Wi-Fi, press the reset button for approximately 5-10 seconds to reset your camera. The reset button can be accessed by sliding a pin or paper clip in the recessed hole on the bottom of your camera.

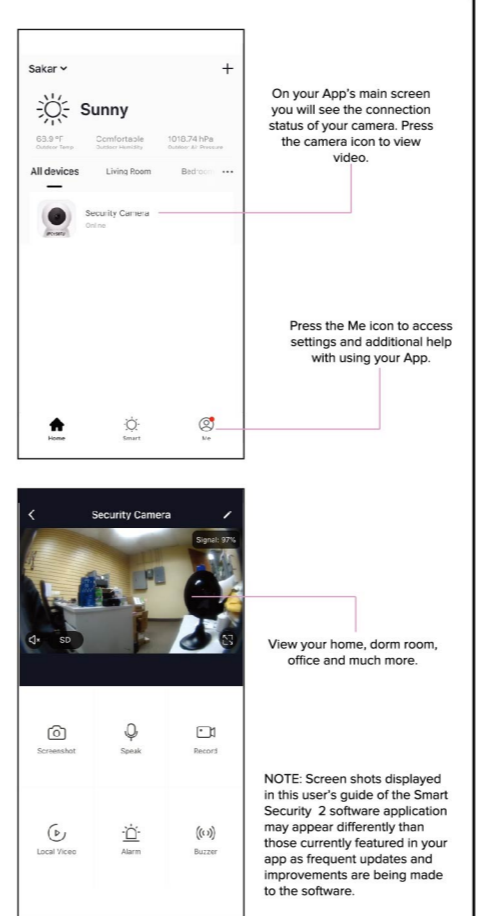
**6. WI-FI CONNECTION**



**7. WI-FI CONNECTION**



**8. USING THE APP**



This device complies with part 15 of the FCC Rules. Operation is subject to the following two conditions:  
(1) This device may not cause harmful interference, and  
(2) this device must accept any interference received, including interference that may cause undesired operation.  
NOTE: This equipment has been tested and found to comply with the limits for a Class B digital device, pursuant to part 15 of the FCC Rules. These limits are designed to provide reasonable protection against harmful interference in a residential installation. This equipment generates, uses and can radiate radio frequency energy and, if not installed and used in accordance with the instructions, may cause harmful interference to radio communications. However, there is no guarantee that interference will not occur in a particular installation. If this equipment does cause harmful interference to radio or television reception, which can be determined by turning the equipment off and on, the user is encouraged to try to correct the interference by one or more of the following measures:  
- Reorient or relocate the receiving antenna.  
- Increase the separation between the equipment and receiver.  
- Connect the equipment into an outlet on a circuit different from that to which the receiver is connected.  
- Consult the dealer or an experienced radio/ TV technician for help.  
Warning: Changes or modifications to this unit not expressly approved by the part responsible for compliance could void the user's authority to operate the equipment.  
FCC Radiation Exposure Statement  
The device has been evaluated to meet general RF exposure requirement. The device can be used in mobile/fixed (Min 20cm) exposure condition without restriction.