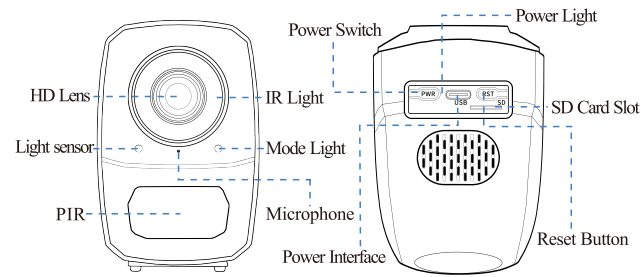




# USER MANUAL

## Product Description



**How to reset camera:** When the camera is turned on, press and hold the reset button for about 3 seconds until you hear the "reset complete, will restart the device " or the blue light and green light flash slowly at the same time, and then the blue light flashes slowly.

## Device Description

- This device has two modes: AP mode and WiFi mode
- Built-in battery.
- Support DC5V/2A power supply.

## Indicator Status

**Yellow light:** always bright during charging; goes out after fully charged

**Blue light:** slow flash---waiting for connection; fast flash---during connection; always bright--- connection success

**Green light:** keep on indicates that the AP connection is successful

**The blue light and green light flash slowly at the same time:** restore factory

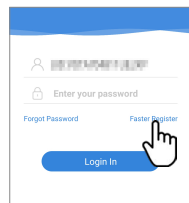
## Step 1: Pre-Setup

- ☑ Long press the “PWR” button 3 seconds to turn on
  - ☑ Long press the reset button 3 seconds to reset.
  - ☑ It's recommended to place the camera within 2 meters of the router for the first time connecting to the Internet.
  - ☑ Connect the mobile phone to the router Wi-Fi, and know the Wi-Fi connection password.  
(Only 2.4GHz Wi-Fi is supported)
- (How to power off: Long press the power button for 3 seconds to power off)

## Step 2 : APP Download and Registration

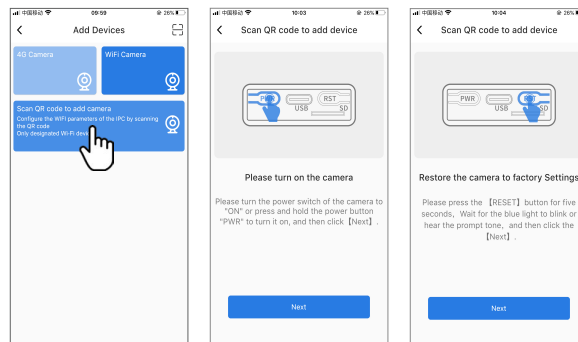


- 1 Search for "Fowl" in App Store or Google Play, or scan the QR code to download the app.

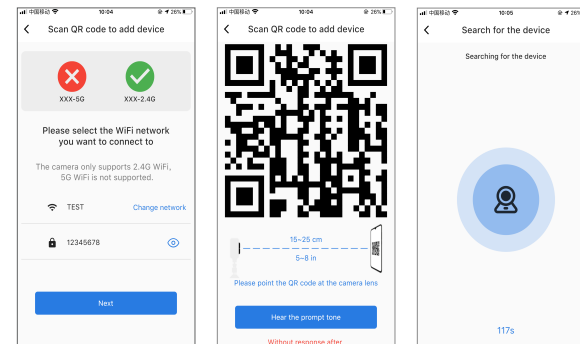


- 2 Click“Register”, enter the user name and password to complete the registration.

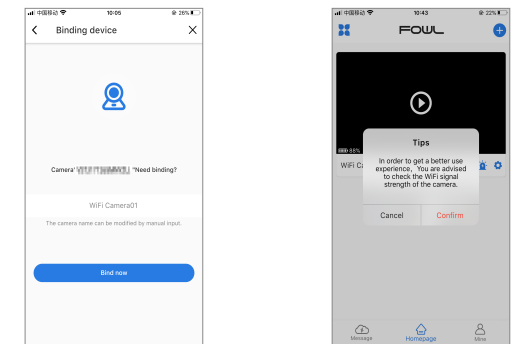
## Step 3: Add Devices to the APP Method One: Scan QR cord to add camera



- 1 Click Add Device and choose "Scan QR Code to add camera".
- 2 Turn on the camera.
- 3 Long press the RESET button for 3 seconds to restore the camera to factory settings.

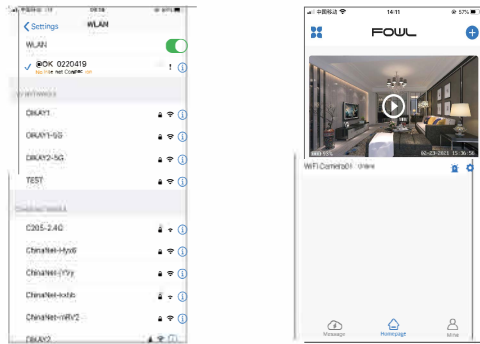


- 4 Confirm the WiFi to be connected and enter the correct password. (The device does not support 5G Hz networks)
- 5 Scan the QR code generated by the App with the camera lens until the camera makes a beep.
- 6 Wait for the camera to connect successfully.



- 7 Click “Bind now”.
- 8 You can choose to detect the signal strength at the location of the device to get a better experience.

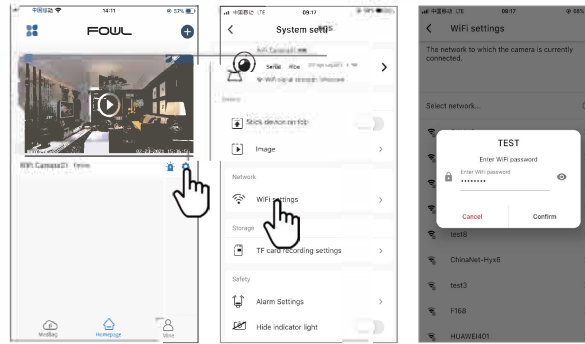
## Method Two: AP Connection



- 1 Please go to your mobile phone WiFi Settings , select the WiFi hotspot that start with OK-XXX and connect it.
- 2 Open the app and Click play to watch and operate the camera.

— 8 —

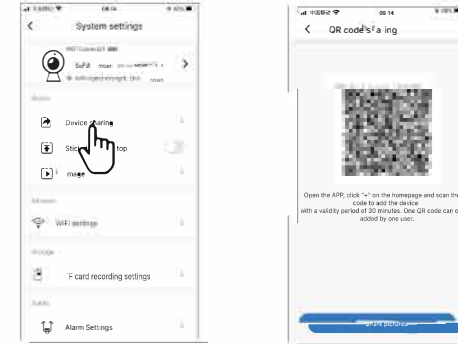
## Configure WiFi



- 1 Enter camera parameters
- 2 Select WiFi settings.
- 3 Select your home WiFi and enter the WiFi password correctly.

— 9 —

## Device Share



Click "Settings" on the right corner, then select "Device Share"--- "QR Code Sharing". Other users can open the app and click the "+" in the upper right corner of the home page to scan the QR code to add the device.

— 10 —

## FCC Statement

Changes or modifications not expressly approved by the party responsible for compliance could void the user's authority to operate the equipment.

This equipment has been tested and found to comply with the limits for a Class B digital device, pursuant to Part 15 of the FCC Rules. These limits are designed to provide reasonable protection against harmful interference in a residential installation. This equipment generates uses and can radiate radio frequency energy and, if not installed and used in accordance with the instructions, may cause harmful interference to radio communications. However, there is no guarantee that interference will not occur in a particular installation. If this equipment does cause harmful interference to radio or television reception, which can be determined by turning the equipment off and on, the user is encouraged to try to correct the interference by one or more of the following

measures

- Reorient or relocate the receiving antenna
- Increase the separation between the equipment and receiver.
- Connect the equipment into an outlet on a circuit different from that to which the receiver is connected.
- Consult the dealer or an experienced radio/TV technician for help

This device complies with part 15 of the FCC rules. Operation is subject to the following two conditions (1) this device may not cause harmful interference, and (2) this device must accept any interference received, including interference that may cause undesired operation.

This equipment complies with FCC radiation exposure limits set forth for an uncontrolled environment. This equipment should be installed and operated with minimum distance 20cm between the radiator & your body.

— 12 —

— 13 —

— 14 —

— 15 —