

## System Check\_Head\_750MHz

### DUT: D750V3-1012

Communication System: CW ; Frequency: 750 MHz;Duty Cycle: 1:1

Medium: HSL\_750\_220204 Medium parameters used:  $f = 750$  MHz;  $\sigma = 0.901$  S/m;  $\epsilon_r = 42.786$ ;  $\rho = 1000$  kg/m<sup>3</sup>

Ambient Temperature : 23.5 °C ; Liquid Temperature : 22.5 °C

DASY5 Configuration:

- Probe: EX3DV4 - SN3578; ConvF(10.02, 10.02, 10.02) @ 750 MHz; Calibrated: 2021/6/23
- Sensor-Surface: 1.4mm (Mechanical Surface Detection)
- Electronics: DAE3 Sn528; Calibrated: 2021/7/26
- Phantom: ELI v5.0\_Left; Type: QDOVA002AA; Serial: TP:1191
- Measurement SW: DASY52, Version 52.10 (4);SEMCAD X Version 14.6.14 (7483)

**Pin=50mW/Area Scan (61x61x1):** Interpolated grid: dx=1.500 mm, dy=1.500 mm

Maximum value of SAR (interpolated) = 0.541 W/kg

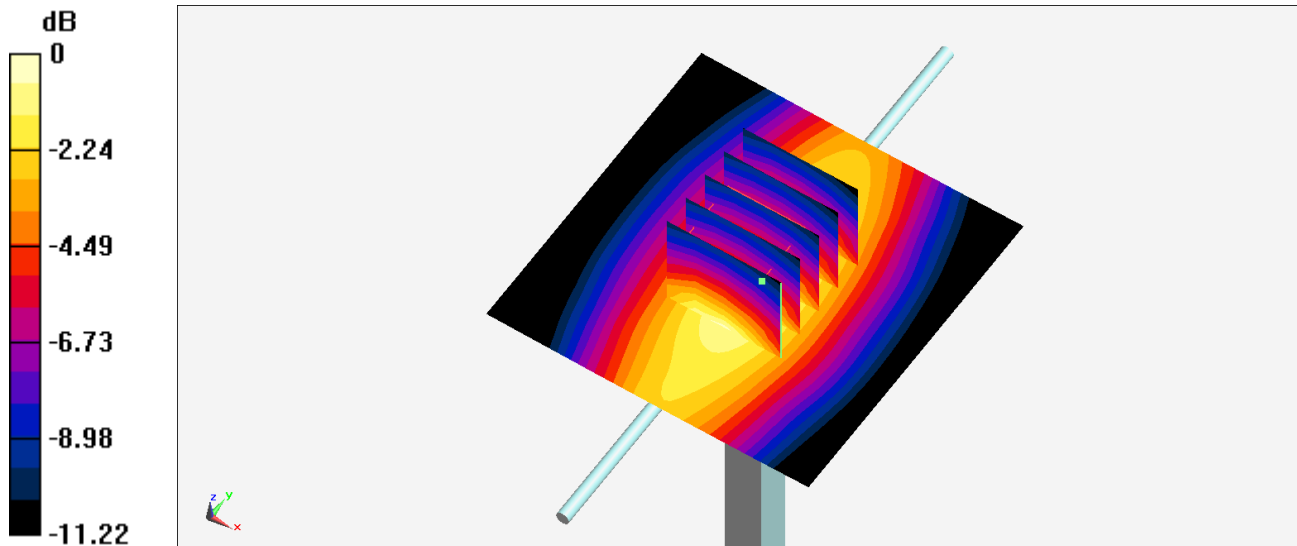
**Pin=50mW/Zoom Scan (5x5x7)/Cube 0:** Measurement grid: dx=8mm, dy=8mm, dz=5mm

Reference Value = 27.50 V/m; Power Drift = -0.11 dB

Peak SAR (extrapolated) = 0.716 W/kg

**SAR(1 g) = 0.432 W/kg; SAR(10 g) = 0.282 W/kg**

Maximum value of SAR (measured) = 0.600 W/kg



0 dB = 0.600 W/kg = -2.22 dBW/kg

## System Check\_Head\_835MHz

### DUT: D835V2-499

Communication System: CW; Frequency: 835 MHz; Duty Cycle: 1:1

Medium: HSL\_850\_220204 Medium parameters used:  $f = 835$  MHz;  $\sigma = 0.937$  S/m;  $\epsilon_r = 42.49$ ;  $\rho = 1000$  kg/m<sup>3</sup>

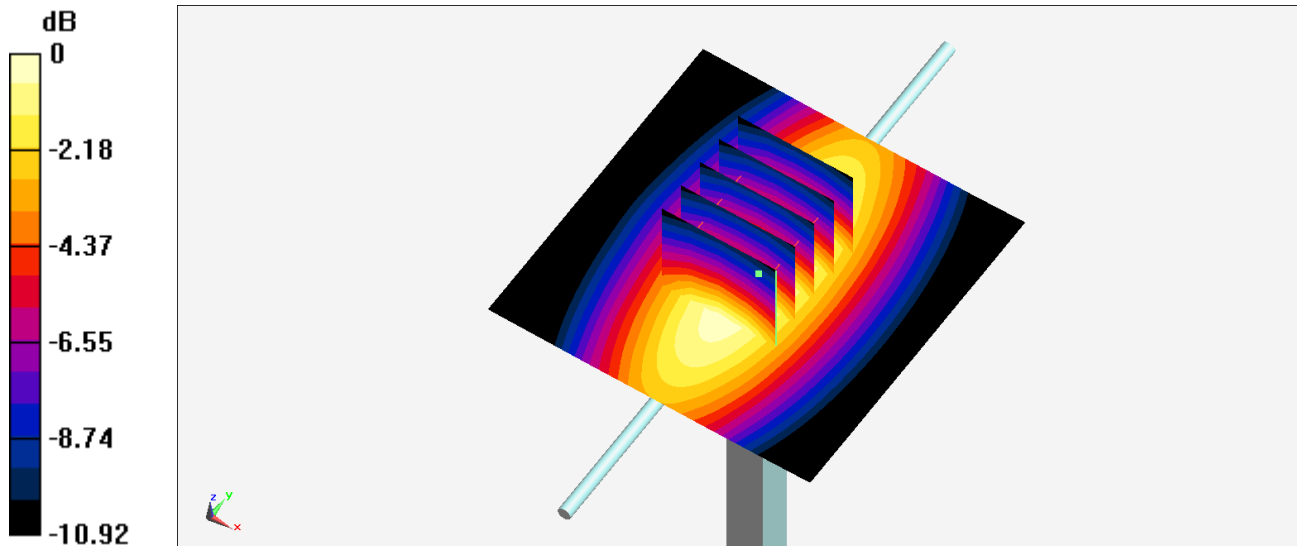
Ambient Temperature : 23.5 °C ; Liquid Temperature : 22.5 °C

DASY5 Configuration:

- Probe: EX3DV4 - SN3578; ConvF(9.54, 9.54, 9.54) @ 835 MHz; Calibrated: 2021/6/23
- Sensor-Surface: 1.4mm (Mechanical Surface Detection)
- Electronics: DAE3 Sn528; Calibrated: 2021/7/26
- Phantom: ELI v5.0\_Left; Type: QDOVA002AA; Serial: TP:1191
- Measurement SW: DASY52, Version 52.10 (4); SEMCAD X Version 14.6.14 (7483)

**Pin=250mW/Area Scan (61x61x1):** Interpolated grid: dx=1.500 mm, dy=1.500 mm  
Maximum value of SAR (interpolated) = 3.27 W/kg

**Pin=250mW/Zoom Scan (5x5x7)/Cube 0:** Measurement grid: dx=8mm, dy=8mm, dz=5mm  
Reference Value = 61.69 V/m; Power Drift = -0.08 dB  
Peak SAR (extrapolated) = 3.63 W/kg  
**SAR(1 g) = 2.44 W/kg; SAR(10 g) = 1.59 W/kg**  
Maximum value of SAR (measured) = 3.25 W/kg



0 dB = 3.25 W/kg = 5.12 dBW/kg

## System Check\_Head\_1750MHz

### DUT: D1750V2-1068

Communication System: CW; Frequency: 1750 MHz; Duty Cycle: 1:1

Medium: HSL\_1750\_220203 Medium parameters used:  $f = 1750$  MHz;  $\sigma = 1.381$  S/m;  $\epsilon_r = 40.804$ ;  $\rho = 1000$  kg/m<sup>3</sup>

Ambient Temperature : 23.4 °C ; Liquid Temperature : 22.4 °C

DASY5 Configuration:

- Probe: EX3DV4 - SN3578; ConvF(8.09, 8.09, 8.09) @ 1750 MHz; Calibrated: 2021/6/23
- Sensor-Surface: 1.4mm (Mechanical Surface Detection)
- Electronics: DAE3 Sn528; Calibrated: 2021/7/26
- Phantom: ELI v5.0\_Left; Type: QDOVA002AA; Serial: TP:1191
- Measurement SW: DASY52, Version 52.10 (4); SEMCAD X Version 14.6.14 (7483)

**Pin=50mW/Area Scan (61x61x1):** Interpolated grid: dx=1.500 mm, dy=1.500 mm

Maximum value of SAR (interpolated) = 2.83 W/kg

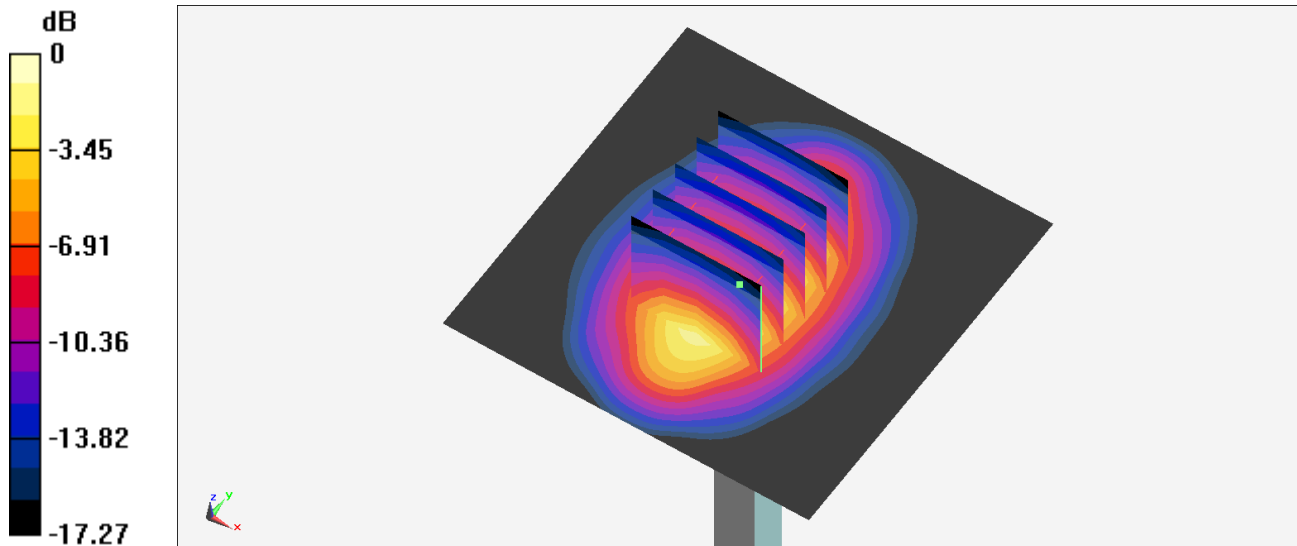
**Pin=50mW/Zoom Scan (5x5x7)/Cube 0:** Measurement grid: dx=8mm, dy=8mm, dz=5mm

Reference Value = 46.86 V/m; Power Drift = -0.08 dB

Peak SAR (extrapolated) = 3.31 W/kg

**SAR(1 g) = 1.8 W/kg; SAR(10 g) = 0.950 W/kg**

Maximum value of SAR (measured) = 2.80 W/kg



0 dB = 2.80 W/kg = 4.47 dBW/kg

## System Check\_Head\_1750MHz

### DUT: D1750V2-1068

Communication System: CW; Frequency: 1750 MHz; Duty Cycle: 1:1

Medium: HSL\_1750\_220206 Medium parameters used:  $f = 1750$  MHz;  $\sigma = 1.365$  S/m;  $\epsilon_r = 40.424$ ;  $\rho = 1000$  kg/m<sup>3</sup>

Ambient Temperature : 23.4 °C ; Liquid Temperature : 22.4 °C

DASY5 Configuration:

- Probe: EX3DV4 - SN3578; ConvF(8.09, 8.09, 8.09) @ 1750 MHz; Calibrated: 2021/6/23
- Sensor-Surface: 1.4mm (Mechanical Surface Detection)
- Electronics: DAE3 Sn528; Calibrated: 2021/7/26
- Phantom: ELI v5.0\_Left; Type: QDOVA002AA; Serial: TP:1191
- Measurement SW: DASY52, Version 52.10 (4); SEMCAD X Version 14.6.14 (7483)

**Pin=50mW/Area Scan (61x61x1):** Interpolated grid: dx=1.500 mm, dy=1.500 mm

Maximum value of SAR (interpolated) = 2.80 W/kg

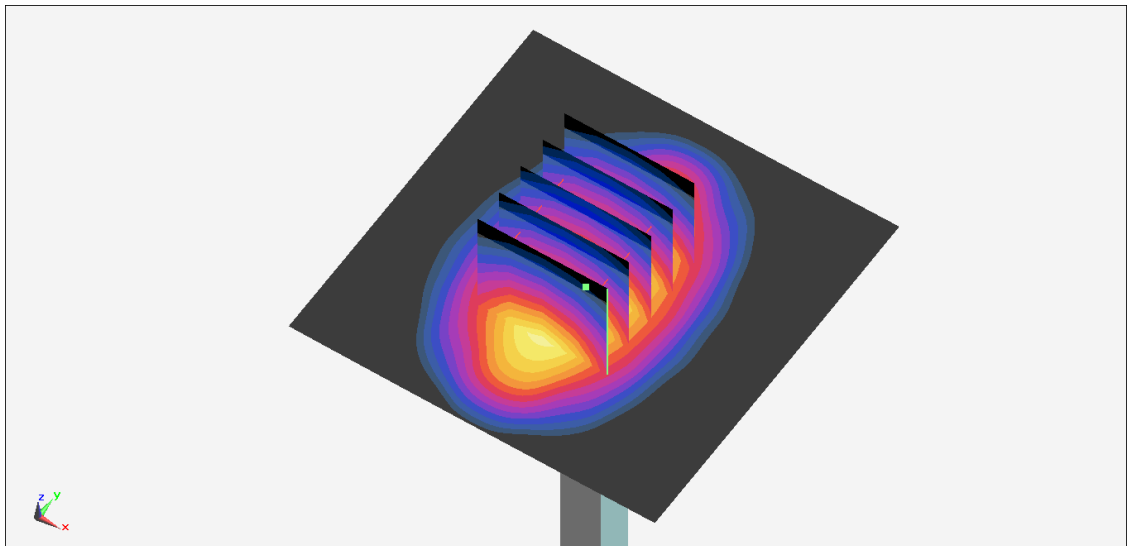
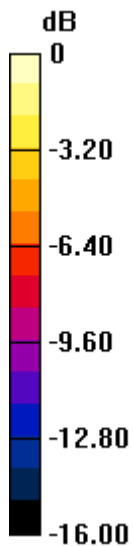
**Pin=50mW/Zoom Scan (5x5x7)/Cube 0:** Measurement grid: dx=8mm, dy=8mm, dz=5mm

Reference Value = 46.86 V/m; Power Drift = -0.15 dB

Peak SAR (extrapolated) = 3.27 W/kg

**SAR(1 g) = 1.78 W/kg; SAR(10 g) = 0.939 W/kg**

Maximum value of SAR (measured) = 2.76 W/kg



0 dB = 2.76 W/kg = 4.41 dBW/kg

## System Check\_Head\_1900MHz

### DUT: D1900V2-5d041

Communication System: CW; Frequency: 1900 MHz; Duty Cycle: 1:1

Medium: HSL\_1900\_220205 Medium parameters used:  $f = 1900$  MHz;  $\sigma = 1.397$  S/m;  $\epsilon_r = 40.552$ ;  $\rho = 1000$  kg/m<sup>3</sup>

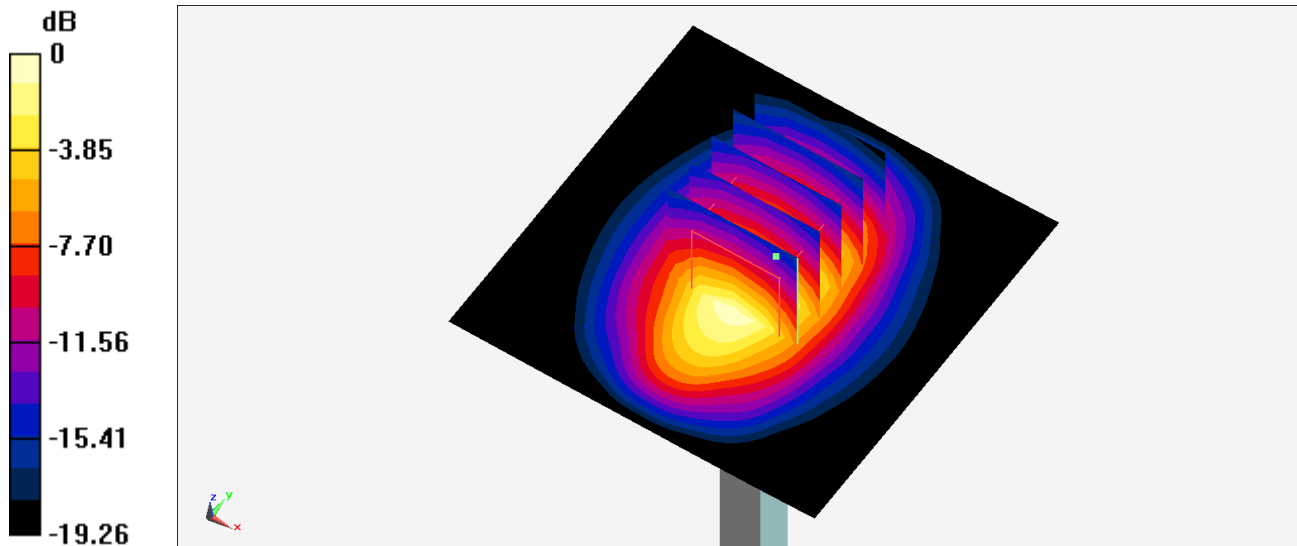
Ambient Temperature : 23.4 °C; Liquid Temperature : 22.4 °C

DASY5 Configuration:

- Probe: EX3DV4 - SN3578; ConvF(7.82, 7.82, 7.82) @ 1900 MHz; Calibrated: 2021/6/23
- Sensor-Surface: 1.4mm (Mechanical Surface Detection)
- Electronics: DAE3 Sn528; Calibrated: 2021/7/26
- Phantom: ELI v5.0\_Left; Type: QDOVA002AA; Serial: TP:1191
- Measurement SW: DASY52, Version 52.10 (4); SEMCAD X Version 14.6.14 (7483)

**Pin=250mW/Area Scan (61x61x1):** Interpolated grid: dx=1.500 mm, dy=1.500 mm  
Maximum value of SAR (interpolated) = 15.1 W/kg

**Pin=250mW/Zoom Scan (5x5x7)/Cube 0:** Measurement grid: dx=8mm, dy=8mm, dz=5mm  
Reference Value = 106.6 V/m; Power Drift = -0.18 dB  
Peak SAR (extrapolated) = 17.9 W/kg  
**SAR(1 g) = 9.66 W/kg; SAR(10 g) = 5.04 W/kg**  
Maximum value of SAR (measured) = 15.0 W/kg



0 dB = 15.0 W/kg = 11.76 dBW/kg

## System Check\_Head\_1900MHz

### DUT: D1900V2-5d041

Communication System: CW; Frequency: 1900 MHz; Duty Cycle: 1:1

Medium: HSL\_1900\_220206 Medium parameters used:  $f = 1900$  MHz;  $\sigma = 1.379$  S/m;  $\epsilon_r = 40.172$ ;  $\rho = 1000$  kg/m<sup>3</sup>

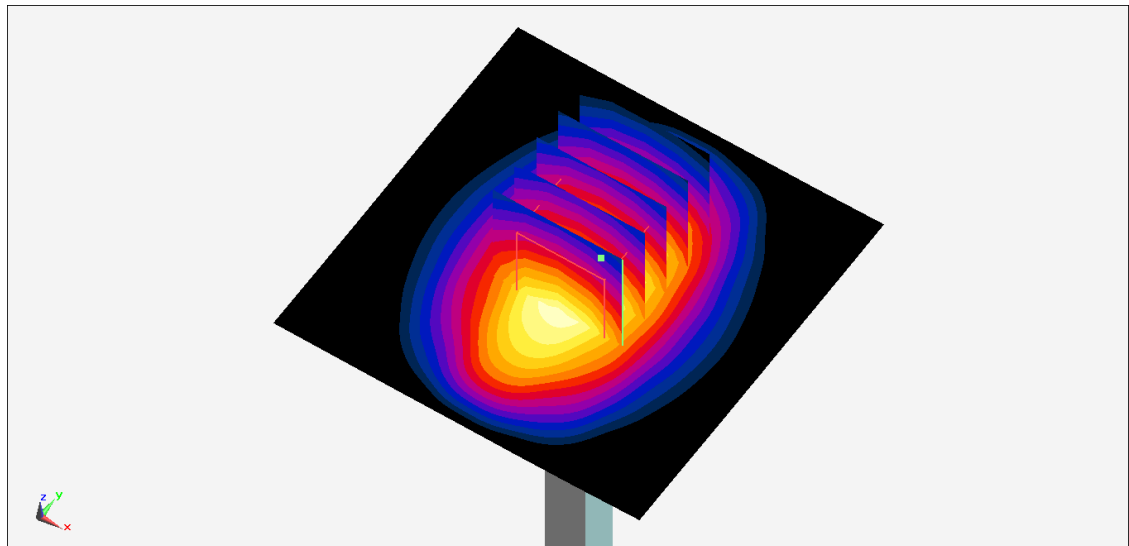
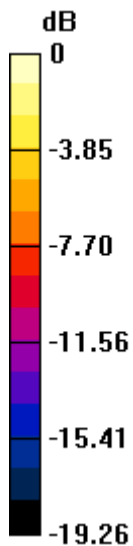
Ambient Temperature : 23.4 °C; Liquid Temperature : 22.4 °C

DASY5 Configuration:

- Probe: EX3DV4 - SN3578; ConvF(7.82, 7.82, 7.82) @ 1900 MHz; Calibrated: 2021/6/23
- Sensor-Surface: 1.4mm (Mechanical Surface Detection)
- Electronics: DAE3 Sn528; Calibrated: 2021/7/26
- Phantom: ELI v5.0\_Left; Type: QDOVA002AA; Serial: TP:1191
- Measurement SW: DASY52, Version 52.10 (4); SEMCAD X Version 14.6.14 (7483)

**Pin=250mW/Area Scan (61x61x1):** Interpolated grid: dx=1.500 mm, dy=1.500 mm  
Maximum value of SAR (interpolated) = 15.0 W/kg

**Pin=250mW/Zoom Scan (5x5x7)/Cube 0:** Measurement grid: dx=8mm, dy=8mm, dz=5mm  
Reference Value = 106.6 V/m; Power Drift = -0.06 dB  
Peak SAR (extrapolated) = 17.6 W/kg  
**SAR(1 g) = 9.53 W/kg; SAR(10 g) = 4.98 W/kg**  
Maximum value of SAR (measured) = 14.8 W/kg



0 dB = 14.8 W/kg = 11.70 dBW/kg

## System Check\_Head\_2300MHz

### DUT: D2300V2-1088

Communication System: CW; Frequency: 2300 MHz; Duty Cycle: 1:1

Medium: HSL\_2300\_220202 Medium parameters used:  $f = 2300$  MHz;  $\sigma = 1.657$  S/m;  $\epsilon_r = 40.233$ ;  $\rho = 1000$  kg/m<sup>3</sup>

Ambient Temperature : 23.6 °C; Liquid Temperature : 22.6 °C

DASY5 Configuration:

- Probe: EX3DV4 - SN3578; ConvF(7.58, 7.58, 7.58) @ 2300 MHz; Calibrated: 2021/6/23
- Sensor-Surface: 1.4mm (Mechanical Surface Detection)
- Electronics: DAE3 Sn528; Calibrated: 2021/7/26
- Phantom: ELI v5.0\_Left; Type: QDOVA002AA; Serial: TP:1191
- Measurement SW: DASY52, Version 52.10 (4); SEMCAD X Version 14.6.14 (7483)

**Pin=50mW/Area Scan (71x71x1):** Interpolated grid: dx=1.200 mm, dy=1.200 mm

Maximum value of SAR (interpolated) = 4.15 W/kg

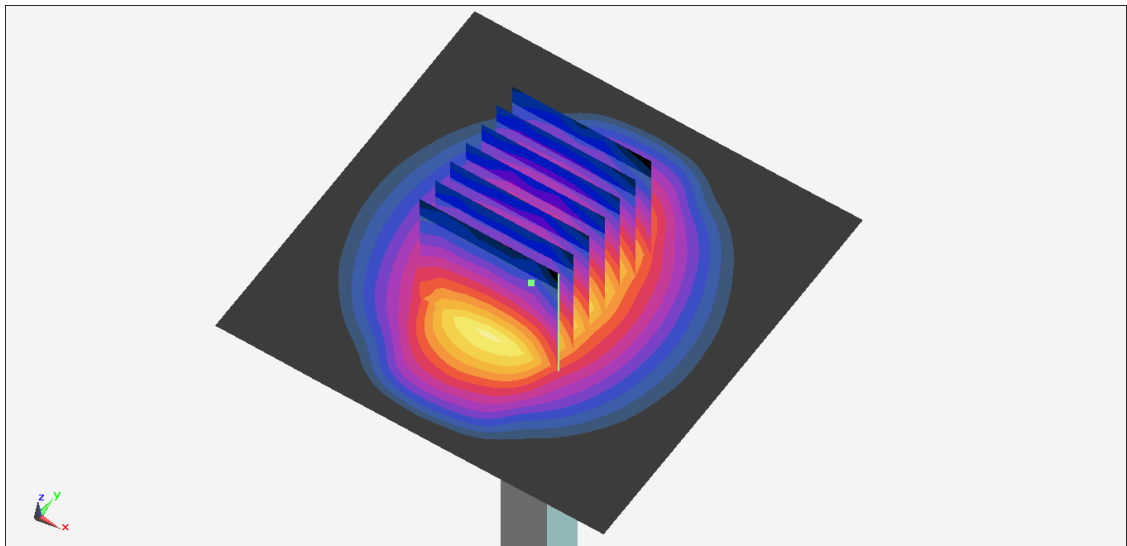
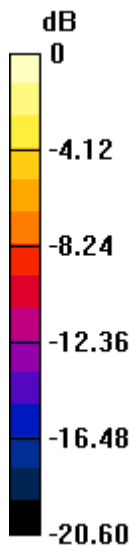
**Pin=50mW/Zoom Scan (7x7x7)/Cube 0:** Measurement grid: dx=5mm, dy=5mm, dz=5mm

Reference Value = 51.07 V/m; Power Drift = -0.13 dB

Peak SAR (extrapolated) = 5.00 W/kg

**SAR(1 g) = 2.37 W/kg; SAR(10 g) = 1.15 W/kg**

Maximum value of SAR (measured) = 3.90 W/kg



0 dB = 3.90 W/kg = 5.91 dBW/kg

## System Check\_Head\_2450MHz

### DUT: D2450V2-736

Communication System: CW; Frequency: 2450 MHz; Duty Cycle: 1:1

Medium: HSL\_2450\_220216 Medium parameters used :  $f = 2450$  MHz;  $\sigma = 1.787$  S/m;  $\epsilon_r = 38.894$ ;  $\rho = 1000$  kg/m<sup>3</sup>

Ambient Temperature : 23.4 °C ; Liquid Temperature : 22.4 °C

DASY5 Configuration:

- Probe: EX3DV4 - SN7625; ConvF(7.91, 7.91, 7.91) @ 2450 MHz; Calibrated: 2022/1/27
- Sensor-Surface: 1.4mm (Mechanical Surface Detection)
- Electronics: DAE4 Sn376; Calibrated: 2021/11/22
- Phantom: ELI v4.0\_Left; Type: QDOVA002AA; Serial: TP:1041
- Measurement SW: DASY52, Version 52.10 (4); SEMCAD X Version 14.6.14 (7483)

**Pin=50mW/Area Scan (81x81x1):** Interpolated grid: dx=1.200 mm, dy=1.200 mm

Maximum value of SAR (interpolated) = 4.11 W/kg

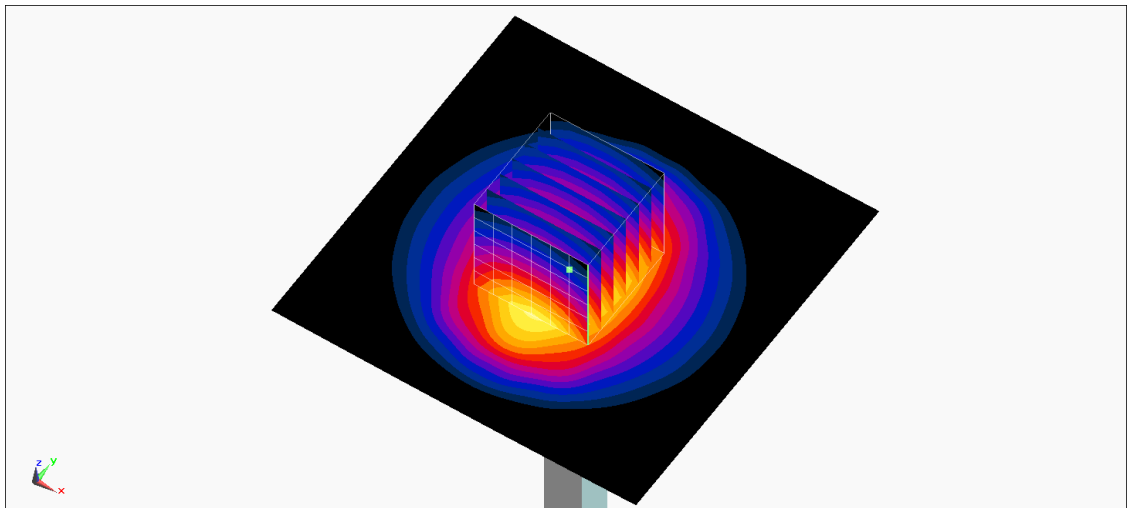
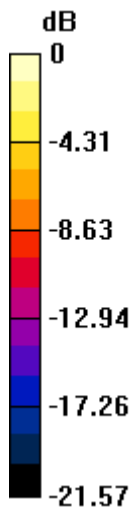
**Pin=50mW/Zoom Scan (7x7x7)/Cube 0:** Measurement grid: dx=5mm, dy=5mm, dz=5mm

Reference Value = 49.07 V/m; Power Drift = -0.09 dB

Peak SAR (extrapolated) = 5.09 W/kg

**SAR(1 g) = 2.5 W/kg; SAR(10 g) = 1.2 W/kg**

Maximum value of SAR (measured) = 4.09 W/kg



0 dB = 4.09 W/kg = 6.12 dBW/kg



## System Check\_Head\_2600MHz

### DUT: D2600V2-1008

Communication System: CW; Frequency: 2600 MHz; Duty Cycle: 1:1

Medium: HSL\_2600\_220202 Medium parameters used:  $f = 2600$  MHz;  $\sigma = 2.008$  S/m;  $\epsilon_r = 39.057$ ;  $\rho = 1000$  kg/m<sup>3</sup>

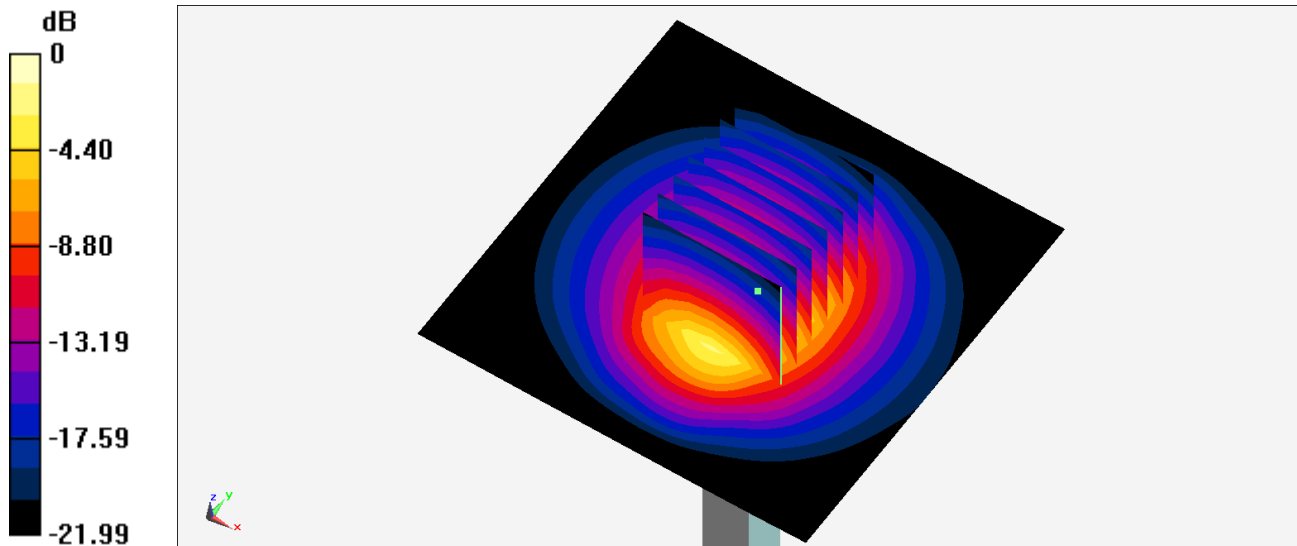
Ambient Temperature : 23.6 °C ; Liquid Temperature : 22.6 °C

DASY5 Configuration:

- Probe: EX3DV4 - SN3578; ConvF(7.22, 7.22, 7.22) @ 2600 MHz; Calibrated: 2021/6/23
- Sensor-Surface: 1.4mm (Mechanical Surface Detection)
- Electronics: DAE3 Sn528; Calibrated: 2021/7/26
- Phantom: ELI v5.0\_Left; Type: QDOVA002AA; Serial: TP:1191
- Measurement SW: DASY52, Version 52.10 (4); SEMCAD X Version 14.6.14 (7483)

**Pin=250mW/Area Scan (71x71x1):** Interpolated grid: dx=1.200 mm, dy=1.200 mm  
Maximum value of SAR (interpolated) = 24.5 W/kg

**Pin=250mW/Zoom Scan (7x7x7)/Cube 0:** Measurement grid: dx=5mm, dy=5mm, dz=5mm  
Reference Value = 108.1 V/m; Power Drift = -0.09 dB  
Peak SAR (extrapolated) = 28.1 W/kg  
**SAR(1 g) = 14.1 W/kg; SAR(10 g) = 6.52 W/kg**  
Maximum value of SAR (measured) = 23.1 W/kg



0 dB = 23.1 W/kg = 13.64 dBW/kg

## System Check\_Head\_2600MHz

### DUT: D2600V2-1008

Communication System: CW; Frequency: 2600 MHz; Duty Cycle: 1:1

Medium: HSL\_2600\_220207 Medium parameters used:  $f = 2600$  MHz;  $\sigma = 2.001$  S/m;  $\epsilon_r = 38.977$ ;  $\rho = 1000$  kg/m<sup>3</sup>

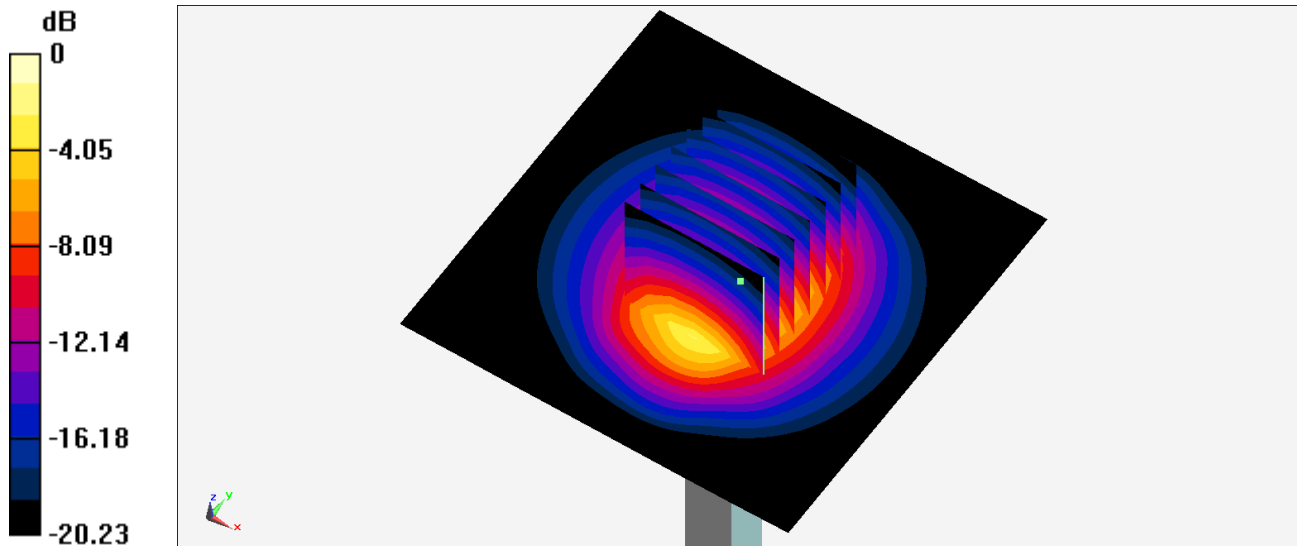
Ambient Temperature : 23.6 °C; Liquid Temperature : 22.6 °C

DASY5 Configuration:

- Probe: EX3DV4 - SN3578; ConvF(7.22, 7.22, 7.22) @ 2600 MHz; Calibrated: 2021/6/23
- Sensor-Surface: 1.4mm (Mechanical Surface Detection)
- Electronics: DAE3 Sn528; Calibrated: 2021/7/26
- Phantom: ELI v5.0\_Left; Type: QDOVA002AA; Serial: TP:1191
- Measurement SW: DASY52, Version 52.10 (4); SEMCAD X Version 14.6.14 (7483)

**Pin=250mW/Area Scan (71x71x1):** Interpolated grid: dx=1.200 mm, dy=1.200 mm  
Maximum value of SAR (interpolated) = 24.4 W/kg

**Pin=250mW/Zoom Scan (7x7x7)/Cube 0:** Measurement grid: dx=5mm, dy=5mm, dz=5mm  
Reference Value = 108.1 V/m; Power Drift = -0.02 dB  
Peak SAR (extrapolated) = 28.0 W/kg  
**SAR(1 g) = 14 W/kg; SAR(10 g) = 6.5 W/kg**  
Maximum value of SAR (measured) = 23.0 W/kg



0 dB = 23.0 W/kg = 13.62 dBW/kg

## System Check\_Head\_3500MHz

### DUT: D3500V2-1013

Communication System: CW; Frequency: 3500 MHz; Duty Cycle: 1:1

Medium: HSL3300-4200\_220208 Medium parameters used:  $f = 3500$  MHz;  $\sigma = 2.91$  S/m;  $\epsilon_r = 38.94$ ;  $\rho = 1000$  kg/m<sup>3</sup>

Ambient Temperature : 23.7 °C; Liquid Temperature : 22.7 °C

DASY5 Configuration:

- Probe: EX3DV4 - SN3578; ConvF(7.06, 7.06, 7.06) @ 3500 MHz; Calibrated: 2021/6/23
- Sensor-Surface: 1.4mm (Mechanical Surface Detection)
- Electronics: DAE3 Sn528; Calibrated: 2021/7/26
- Phantom: ELI v4.0\_Mid; Type: QDOVA001AA; Serial: TP:1026
- Measurement SW: DASY52, Version 52.10 (4); SEMCAD X Version 14.6.14 (7483)

**Pin=50mW/Area Scan (71x71x1):** Interpolated grid: dx=1.200 mm, dy=1.200 mm

Maximum value of SAR (interpolated) = 9.01 W/kg

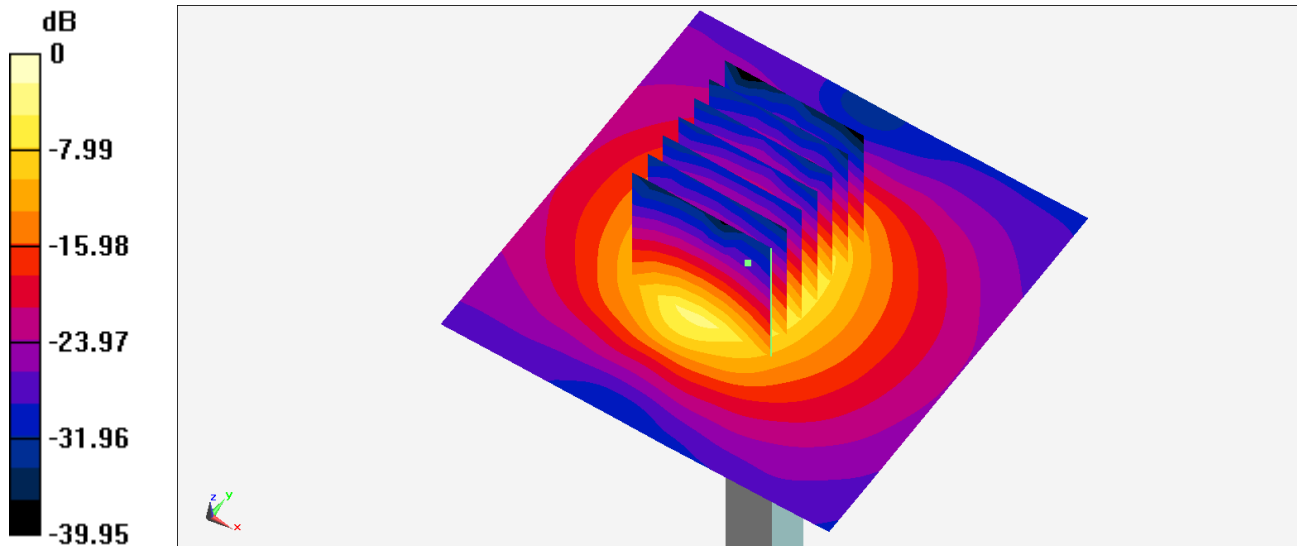
**Pin=50mW/Zoom Scan (7x7x8)/Cube 0:** Measurement grid: dx=5mm, dy=5mm, dz=1.4mm

Reference Value = 51.41 V/m; Power Drift = -0.09 dB

Peak SAR (extrapolated) = 10.8 W/kg

**SAR(1 g) = 3.51 W/kg; SAR(10 g) = 1.32 W/kg**

Maximum value of SAR (measured) = 7.49 W/kg



0 dB = 7.49 W/kg = 8.74 dBW/kg

## System Check\_Head\_3700MHz

### DUT: D3700V2-1022

Communication System: CW; Frequency: 3700 MHz; Duty Cycle: 1:1

Medium: HSL3300-4200\_220208 Medium parameters used:  $f = 3700$  MHz;  $\sigma = 3.119$  S/m;  $\epsilon_r = 38.738$ ;  $\rho = 1000$  kg/m<sup>3</sup>

Ambient Temperature : 23.7 °C; Liquid Temperature : 22.7 °C

DASY5 Configuration:

- Probe: EX3DV4 - SN3578; ConvF(6.96, 6.96, 6.96) @ 3700 MHz; Calibrated: 2021/6/23
- Sensor-Surface: 1.4mm (Mechanical Surface Detection)
- Electronics: DAE3 Sn528; Calibrated: 2021/7/26
- Phantom: ELI v4.0\_Mid; Type: QDOVA001AA; Serial: TP:1026
- Measurement SW: DASY52, Version 52.10 (4); SEMCAD X Version 14.6.14 (7483)

**Pin=50mW/Area Scan (71x71x1):** Interpolated grid: dx=1.200 mm, dy=1.200 mm

Maximum value of SAR (interpolated) = 6.68 W/kg

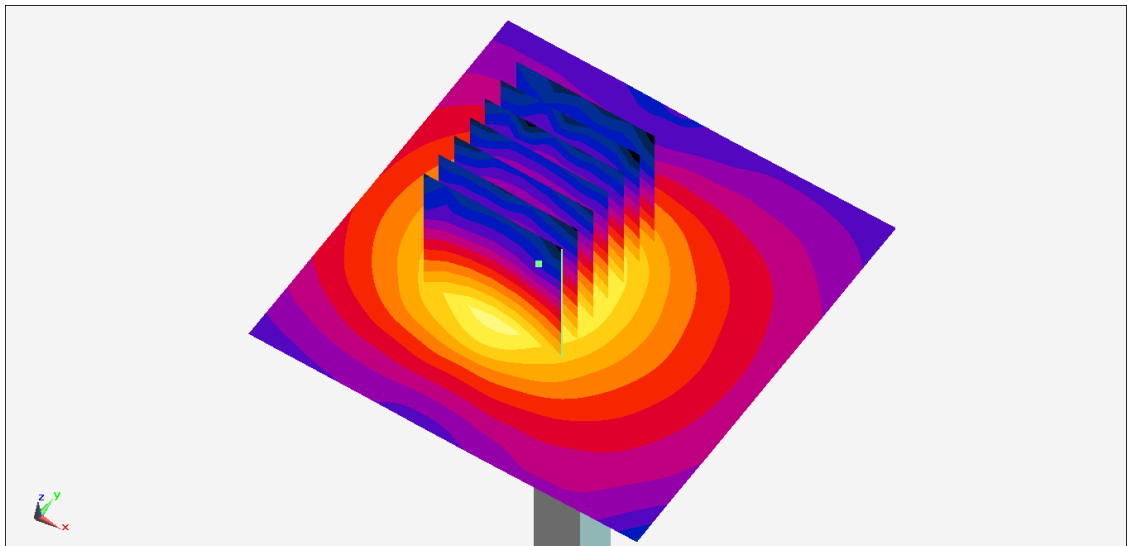
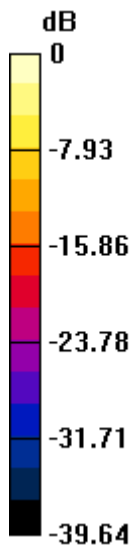
**Pin=50mW/Zoom Scan (7x7x8)/Cube 0:** Measurement grid: dx=5mm, dy=5mm, dz=1.4mm

Reference Value = 38.91 V/m; Power Drift = -0.06 dB

Peak SAR (extrapolated) = 8.11 W/kg

**SAR(1 g) = 3.28 W/kg; SAR(10 g) = 1.21 W/kg**

Maximum value of SAR (measured) = 5.65 W/kg



0 dB = 5.65 W/kg = 7.52 dBW/kg

## System Check\_Head\_3900MHz

### DUT: D3900V2-1017-3900

Communication System: CW; Frequency: 3900 MHz; Duty Cycle: 1:1

Medium: HSL\_3300~4200\_220208 Medium parameters used:  $f = 3900$  MHz;  $\sigma = 3.174$  S/m;  $\epsilon_r = 36.121$ ;  $\rho = 1000$  kg/m<sup>3</sup>

Ambient Temperature : 23.7 °C ; Liquid Temperature : 22.7 °C

DASY5 Configuration:

- Probe: EX3DV4 - SN3578; ConvF(6.81, 6.81, 6.81) @ 3900 MHz; Calibrated: 2021/6/23
- Sensor-Surface: 1.4mm (Mechanical Surface Detection)
- Electronics: DAE3 Sn528; Calibrated: 2021/7/26
- Phantom: ELI v4.0\_Mid; Type: QDOVA001AA; Serial: TP:1026
- Measurement SW: DASY52, Version 52.10 (4); SEMCAD X Version 14.6.14 (7483)

**Pin=50mW/Area Scan (71x71x1):** Interpolated grid: dx=1.200 mm, dy=1.200 mm

Maximum value of SAR (interpolated) = 6.95 W/kg

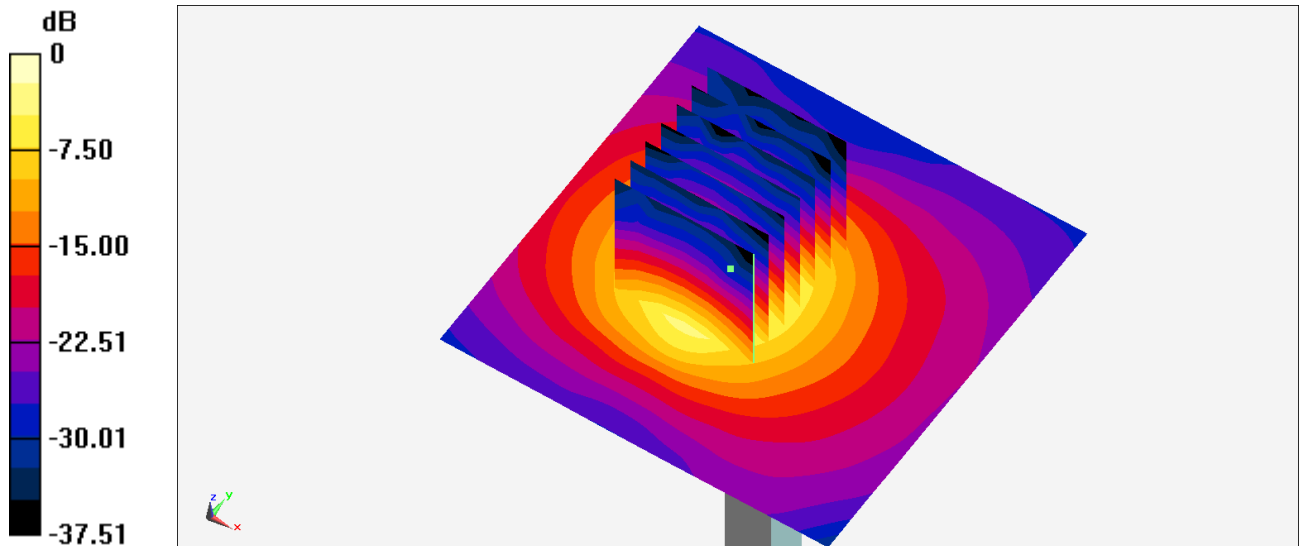
**Pin=50mW/Zoom Scan (7x7x8)/Cube 0:** Measurement grid: dx=5mm, dy=5mm, dz=1.4mm

Reference Value = 39.33 V/m; Power Drift = -0.01 dB

Peak SAR (extrapolated) = 8.44 W/kg

**SAR(1 g) = 3.39 W/kg; SAR(10 g) = 1.18 W/kg**

Maximum value of SAR (measured) = 5.88 W/kg



0 dB = 5.88 W/kg = 7.69 dBW/kg

## System Check\_Head\_5250MHz

### DUT: D5GHzV2-1006

Communication System: CW; Frequency: 5250 MHz; Duty Cycle: 1:1

Medium: HSL\_5G\_220217 Medium parameters used :  $f = 5250$  MHz;  $\sigma = 4.603$  S/m;  $\epsilon_r = 36.809$ ;  $\rho = 1000$  kg/m<sup>3</sup>

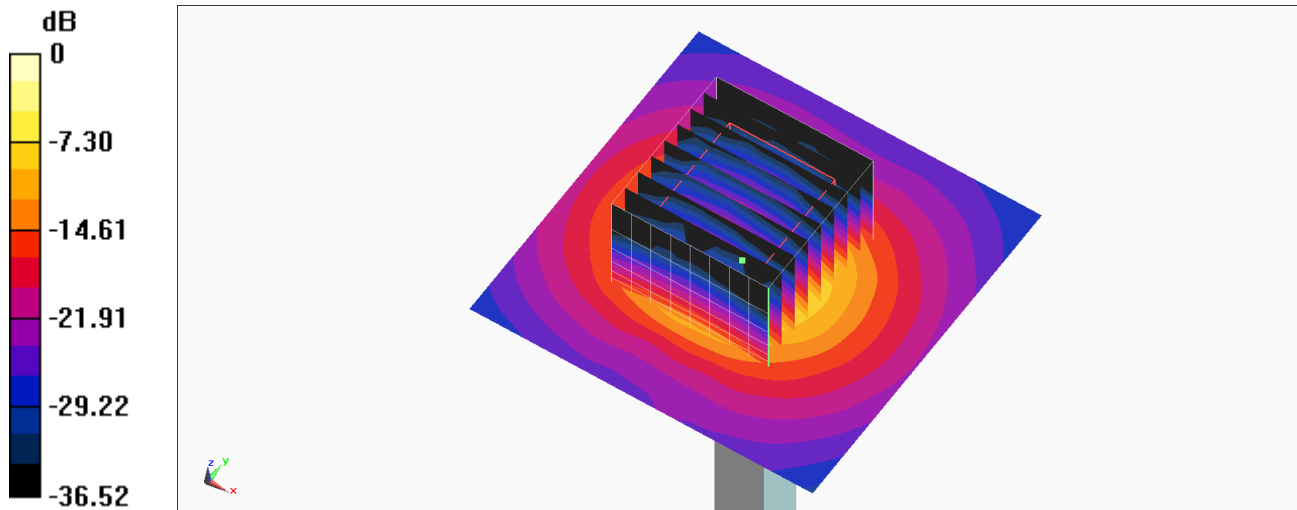
Ambient Temperature : 23.4 °C ; Liquid Temperature : 22.4 °C

DASY5 Configuration:

- Probe: EX3DV4 - SN7625; ConvF(5.45, 5.45, 5.45) @ 5250 MHz; Calibrated: 2022/1/27
- Sensor-Surface: 1.4mm (Mechanical Surface Detection)
- Electronics: DAE4 Sn376; Calibrated: 2021/11/22
- Phantom: ELI v4.0\_Mid; Type: QDOVA001AA; Serial: TP:1026
- Measurement SW: DASY52, Version 52.10 (4); SEMCAD X Version 14.6.14 (7483)

**Pin=100mW/Area Scan (71x71x1):** Interpolated grid: dx=1.000 mm, dy=1.000 mm  
Maximum value of SAR (interpolated) = 19.0 W/kg

**Pin=100mW/Zoom Scan (9x9x7)/Cube 0:** Measurement grid: dx=4mm, dy=4mm, dz=1.4mm  
Reference Value = 71.53 V/m; Power Drift = 0.09 dB  
Peak SAR (extrapolated) = 33.8 W/kg  
**SAR(1 g) = 7.92 W/kg; SAR(10 g) = 2.25 W/kg**  
Maximum value of SAR (measured) = 20.4 W/kg



0 dB = 20.4 W/kg = 13.10 dBW/kg

## System Check\_Head\_6500MHz

Communication System: cw; Frequency: 6500.0

Medium: HSL\_6G\_220217 Medium parameters used:  $f = 6500.0$  MHz;  $\sigma = 6.15$  S/m;  $\epsilon_r = 35.4$

Ambient Temperature: 23.5°C; Liquid Temperature: 22.5°C

DASY6 Configuration:

- Probe: EX3DV4 - SN3642; ConvF(4.95, 4.95, 4.95); Calibrated: 2021-04-26
- Sensor-Surface: 1.4 mm
- Electronics: DAE4 Sn854; Calibrated: 2021-08-19
- Phantom: ELI V5.0 (20deg probe tilt); Serial: 1238; Section: Flat
- Measurement Software: cDASY6 V6.6.0.13926
- UID: CW, 0--
- MAIA: Area Scan: N/A; Zoom Scan: N/A

**Area Scan (51.0 mm x 51.0 mm):** Measurement Grid: 8.5 mm x 8.5 mm

SAR (1g) = 22.9 W/kg; SAR (10g) = 4.64 W/kg;

**Zoom Scan (23.8 mm x 23.8 mm x 22.0 mm):** Measurement Grid: 3.4 mm x 3.4 mm x 1.4 mm

Power Drift = 0.02 dB

SAR (1g) = 28.9 W/kg; SAR (10g) = 5.26 W/kg;

