

Appendix B-1 WIFI6E SAR Plots of SAR Measurement

Measurement Report for Device, EDGE TOP, U-NII-5, UID 10755 AAB, Channel 47 (6170.0MHz)

Device under Test Properties

Model, Manufacturer	Dimensions [mm]	IMEI	DUT Type
Device, BEDW-WTW-P21010159	312.0 x 214.0 x 12.0		Tablet

Exposure Conditions

Phantom Section, TSL	Position, Test Distance [mm]	Band	Group, UID	Frequency [MHz], Channel Number	Conversion Factor	TSL Conductivity [S/m]	TSL Permittivity
Flat,	Top Side, 0.00	U-NII-5	WLAN, 10755-AAB	6170	5.65	5.81	35.2

Hardware Setup

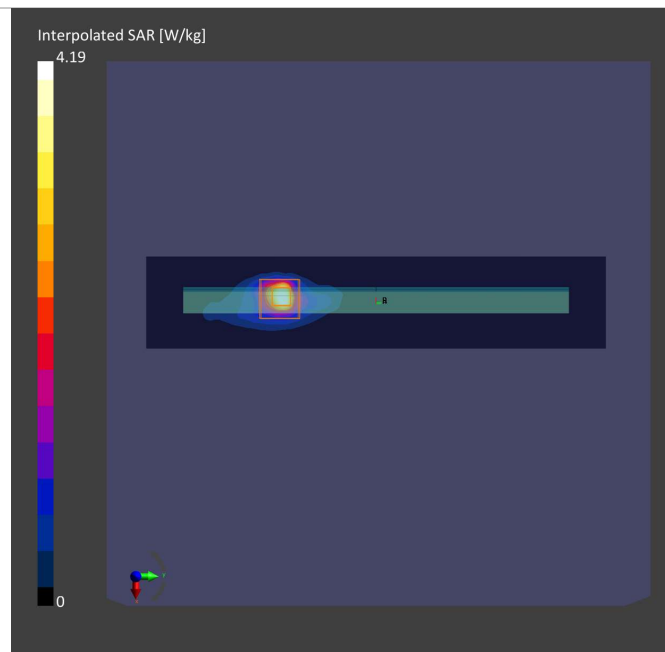
Phantom	TSL, Measured Date	Probe, Calibration Date	DAE, Calibration Date
ELI V5.0 (20deg probe tilt) - 1204	H50T72N1_2021.04.01	EX3DV4 - SN7555, 2020-09-28	DAE4 Sn1589, 2020-09-15

Scan Setup

	Area Scan	Zoom Scan
Grid Extents [mm]	51.0 x 255.0	22.0 x 22.0 x 22.0
Grid Steps [mm]	8.5 x 8.5	3.4 x 3.4 x 1.4
Sensor Surface [mm]	3.0	1.4

Measurement Results

	Area Scan	Zoom Scan
Date	2021-04-01	2021-04-01
psSAR1g [W/Kg]	0.739	0.862
psSAR10g [W/Kg]	0.212	0.227
Power Drift [dB]	-0.11	0.03
M2/M1 [%]		54.8
Dist 3dB Peak [mm]		5.6



P04 WLAN UNII-5_802.11ax HE160_Bottom_0mm_Ch47_Sample1_Ant0_Power Reduction_w

Device under Test Properties

Model, Manufacturer	Dimensions [mm]	IMEI	DUT Type
Device, BEDW-WTW-P21010159	312.0 x 214.0 x 12.0		Laptop

Exposure Conditions

Phantom Section, TSL	Position, Test Distance [mm]	Band	Group, UID	Frequency [MHz], Channel Number	Conversion Factor	TSL Conductivity [S/m]	TSL Permittivity
Flat, HSL	Bottom, 0.00	U-NII-5	WLAN, 10743-AAB	6185	5.7	5.63	34.3

Hardware Setup

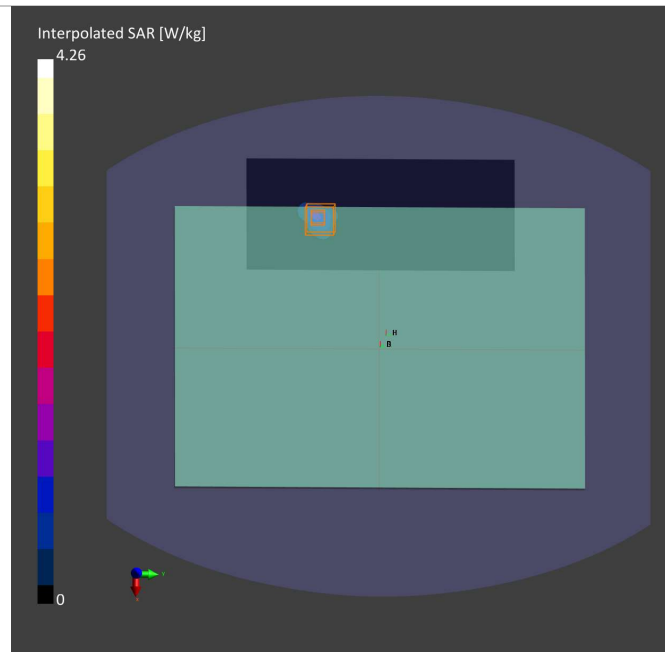
Phantom	TSL, Measured Date	Probe, Calibration Date	DAE, Calibration Date
ELI V8.0 (20deg probe tilt) - 2105	HBBL-600-10000 , 2021-Mar-29	EX3DV4 - SN7472, 2020-08-24	DAE4 Sn1585, 2020-05-28

Scan Setup

	Area Scan	Zoom Scan
Grid Extents [mm]	85.0 x 204.0	22.0 x 22.0 x 22.0
Grid Steps [mm]	8.5 x 8.5	3.4 x 3.4 x 1.4
Sensor Surface [mm]	3.0	1.4

Measurement Results

	Area Scan	Zoom Scan
Date	2021-03-29	2021-03-29
psSAR1g [W/Kg]	0.837	0.633
psSAR10g [W/Kg]	0.244	0.263
Power Drift [dB]	-0.05	-0.04
M2/M1 [%]		54.5
Dist 3dB Peak [mm]		5.5



Appendix B-1 WIFI6E PD Plots of SAR Measurement

Test Lab: Bureau Veritas ADT SAR/HAC/PD Testing Lab

Power Density Plot No.:

P01 WLAN UNII-5_802.11ax HE160_Top Side_0mm_Ch47_Sample1_Ant 0_Power Reduction_w

Device under Test Properties

Name, Manufacturer	Dimensions [mm]	IMEI	DUT Type
WTW-P21010159	310.0 x 212.0 x 20.0		Tablet

Exposure Conditions

Phantom Section	Position, Test Distance [mm]	Band	Group, UID	Frequency [MHz], Channel Number	Conversion Factor
5GAir	Top Side 2.00	U-NII-5	WLAN	6185	1.0

Hardware Setup

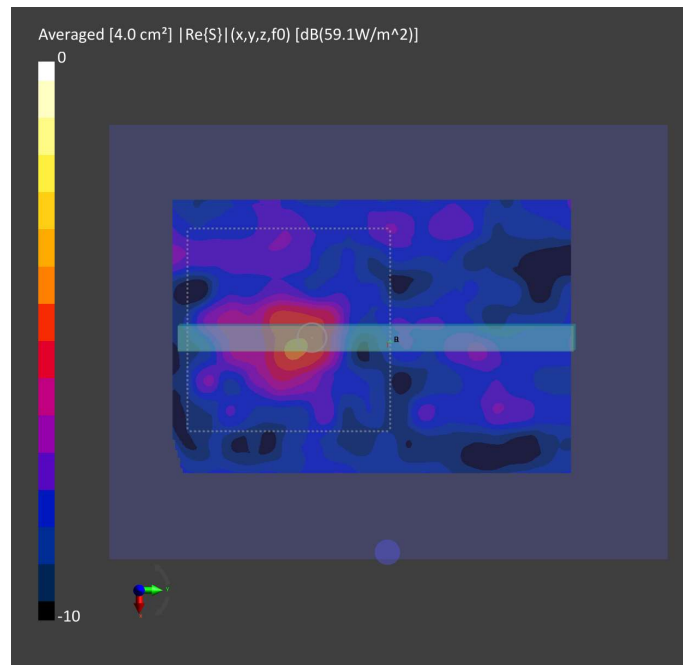
Phantom	Medium	Probe, Calibration Date	DAE, Calibration Date
mmWave	--Air--	EUmmWV4 - SN9454_F1-78GHz, 2020-09-24	DAE4 Sn679, 2020-05-06

Scan Setup

	5G Scan
Grid Extents [mm]	38.0 x 40.0
Grid Steps [lambda]	0.25 x 0.25
Sensor Surface [mm]	2.0

Measurement Results

	5G Scan
Date	2021-03-31
Avg. Area [cm ²]	4.00
pStotavg[W/m ²]	4.14
pSnavg [W/m ²]	4.08
E _{peak} [V/m]	59.1



Test Lab: Bureau Veritas ADT SAR/HAC/PD Testing Lab

P04 WLAN UNII-5_802.11ax HE160_Bottom_0mm_Ch47_Sample1_Ant0_Power Reduction_w

Device under Test Properties

Name, Manufacturer	Dimensions [mm]	IMEI	DUT Type
WTW-P21010159	310.0 x 212.0 x 12.0		Notebook

Exposure Conditions

Phantom Section	Position, Test Distance [mm]	Band	Group, UID	Frequency [MHz], Channel Number	Conversion Factor
5G Air	Bottom 2.00	U-NII-5	WLAN	6185	1.0

Hardware Setup

Phantom	Medium	Probe, Calibration Date	DAE, Calibration Date
mmWave- 1035	--Air-	EUmmWV3 - SN9361_F1-78GHz, 2020-09-24	DAE4 Sn1589, 2020-05-28

Scan Setup

	5G Scan
Grid Extents [mm]	32.0 x 28.0
Grid Steps [lambda]	0.25 x 0.25
Sensor Surface [mm]	2.0

Measurement Results

	5G Scan
Date	2021-03-30
Avg. Area [cm ²]	4.00
pS _{tot} avg [W/m ²]	3.28
pS _n avg [W/m ²]	2.68
E _{peak} [V/m]	52.8

