

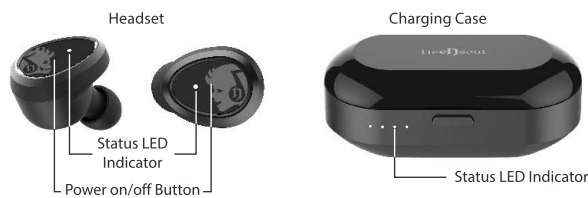


T100+ Wireless Stereo Headset

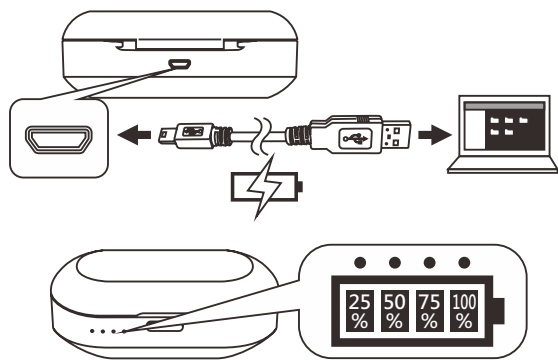
T100+ Wireless Stereo Headset User Manual

Thank you for purchasing Life n Soul T100+ Wireless Stereo Headset. This headset applies the most cutting-edge truly wireless technology and equips with a portable charging case that allows you to enjoy music more freely indoor and outdoor. Please read this manual before you operate the product to avoid damage to the product and hazards to you and your environment. We hope you have fun with your T100+!

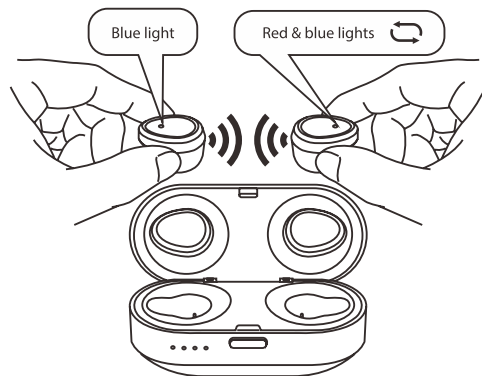
I. Headset overview



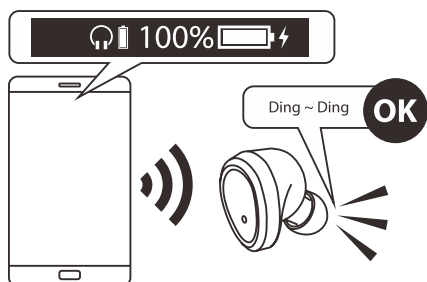
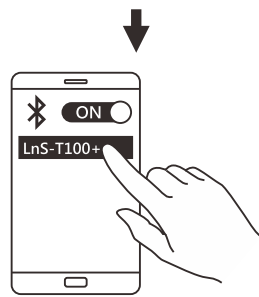
II. Charging



III. Pairing the headset with the Bluetooth device



★ Any side of earbud flashing red and blue lights is the host. Please refer to the description IV if you need to change the host.

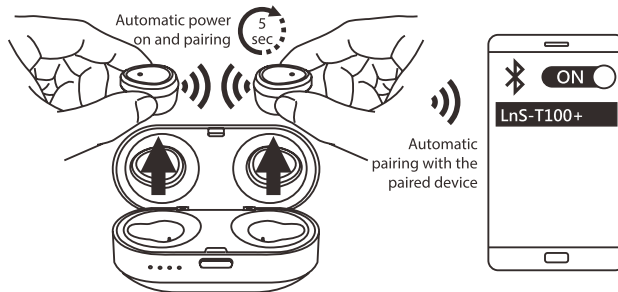


★ If the earbuds fail to connect with each other, please reset the host earbud. (refer to step IV. Host setting)

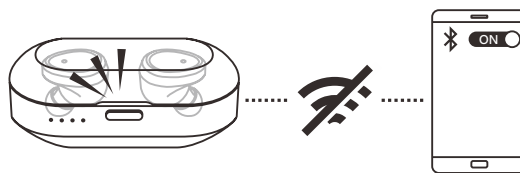
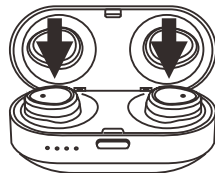
IV. Reset TWS pairing (Host setting)

- Delete all the T100+ connecting data from the Bluetooth list of mobile device.
 - Pick up BOTH earbuds from the case, that will auto power on (red light flashes).
 - Short Press BOTH side buttons for 5 times at the meantime.
 - Then, Press and Hold [Left side button] 1 second, will appear prompt sound [Ding ~ Ding], the TWS pairing mode is start.
 - When the TWS pairing is complete, the Right earbud (the host) will flash red and blue lights, the Left side earbud will flash blue light every 8 seconds.
- ※ If the TWS mode is fail, please restart above step 1-4 for TWS pairing.

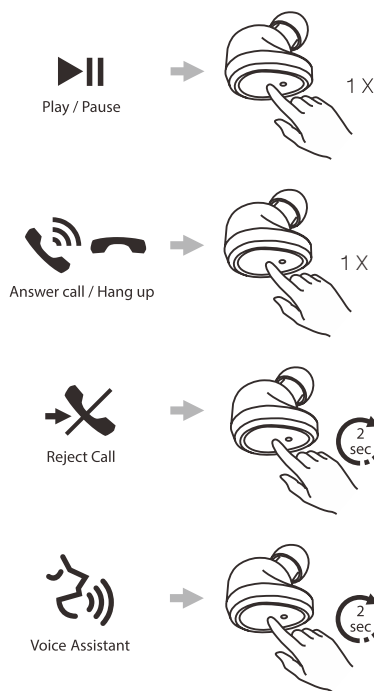
V. Smart switch



Sleep mode / Power off



VI. Manual operation



- ★ The voice assistant will automatically pop out in 3 seconds if it receives no command.
- ★ Please control music back/forward and volume on the music player.

VII. Headset battery status shown on iPhone/iPad

When T100+ headset is connected to iPhone/iPad via Bluetooth, the battery status of the headset can be displayed on the status bar of iPhone/iPad screen.



T100+ headset battery status

N.B. the way to display headset battery status may vary due to different operation system versions.

VIII. Specifications

T100+ (Wireless Stereo Headset)	
Bluetooth Version	Bluetooth 5.0 + EDR
Bluetooth Profiles	A2DP, AVRCP, HFP, HSP
Connecting Distance	10m
Driver Unit	5mm dynamic
Sensitivity	100dB@1KHz
Frequency Response	20~20KHz
Play Time	4 hours
Charging Time	1.5 hours
Microphone	Omnidirectional
Weight	5g
T100+ (Charging Case)	
Battery Voltage	3.7V
Battery Type	Lithium Polymer
Charging Time	3 hours
Extra hour supply for playtime	32 hours
Battery Status Indicator	LED
Charging Connector	Micro-USB
Weight	72g
Dimensions	97mm x 46mm x 37mm

- ★ Charging time may vary depending on the way to use.
- ★ If the headset is not charged for a long time, the Li-ion battery may not be able to preserve the most effective operation. Please fully charge the headset and the case once at least every 3 to 6 months to avoid the batteries over discharge that affects the power consumption efficiency.

IX. In the Box

- T100+ Wireless Stereo Headset x 1
- T100+ Charging Case x 1
- Comfy Ear Tips x 3 sets (S/M/L, size M has been placed on the headset)
- Micro-USB Charging Cable x 1
- User Manual

X. Safety Information

Please read these safety warnings and cautions carefully to ensure your personal safety and prevent property damage.

- Fire and Electric Shock Hazard
 - Do not drop, disassemble, open, crush, bend, deform, puncture, shred, microwave, incinerate, paint, or insert foreign objects in to the headset. Such actions could result in electric shock.
 - Clean the headset only with a dry cloth.
 - Do not expose your headset to extremely high or low temperatures.
 - Do not leave your headset in direct sunlight for extended periods of time.
 - Do not leave your headset near open flames such as cooking burners, candles, or fireplaces.
 - Do not block ventilation openings.
- Caution
 - The headset is not designed waterproof. Please do not place it into the water or it may cause electronic damage.
 - Do not use abrasive cleaners to clean your headset because this could cause scratches or damage.
 - Do not leave your headset to contact with any sharp objects because this could cause scratches and damage.
 - Do not insert anything into your headset unless otherwise specified in this User Manual. This may damage the internal components.
 - Do not attempt to repair, modify, or disassemble your headset yourself.
 - Do not attempt to replace the battery of the headset. It is built-in, and not changeable by users.
 - Use only the USB charging cable supplied in the accessories package to charge the headset.
 - Observe all signs and displays that require an electrical device or RF radio products to be switched off in designated areas.

XI. FCC Disclaimer

This equipment has been tested and found to comply with the limits for a Class B digital device, pursuant to Part 15 of the FCC Rules. These limits are designed to provide reasonable protection against harmful interference in a residential installation.

This equipment generates, uses and can radiate radio frequency energy and, if not installed and used in accordance with the instructions, may cause harmful interference to radio communications. However, there is no guarantee that interference will not occur in a particular installation. If this equipment does cause harmful interference to radio or television reception, which can be determined by turning the equipment off and on, the user is encouraged to try to correct the interference by one of the following measures:

- Reorient or relocate the receiving antenna.
- Increase the separation between the equipment and receiver.
- Connect the equipment into an outlet on a circuit different from that to which the receiver is connected.
- Consult the dealer or an experienced radio/TV technician for help.

FCC Caution: To assure continued compliance, any changes or modifications not expressly approved by the party responsible for compliance could void the user's authority to operate this equipment. (Example - use only shielded interface cables when connecting to computer or peripheral devices)

XII. CE STATEMENT

This product is compliant with the CE directive.



WHO (World Health Organization) suggests that the maximum daily noise tolerance of human ears shall not exceed 85 db. We strongly recommend to keep moderate volume when listening to music with the headset. And please rest your ears at least every hour when continuously using the headset.

2AQ5M-BT1022 Label

FCC ID: 2AQ5M-BT1022

Model: T100

This device complies with Part 15 of the FCC Rules.

Operation is subject to the following two conditions:

- (1) This device may not cause harmful interference, and
- (2) this device must accept any interference received, including interference that may cause undesired operation.