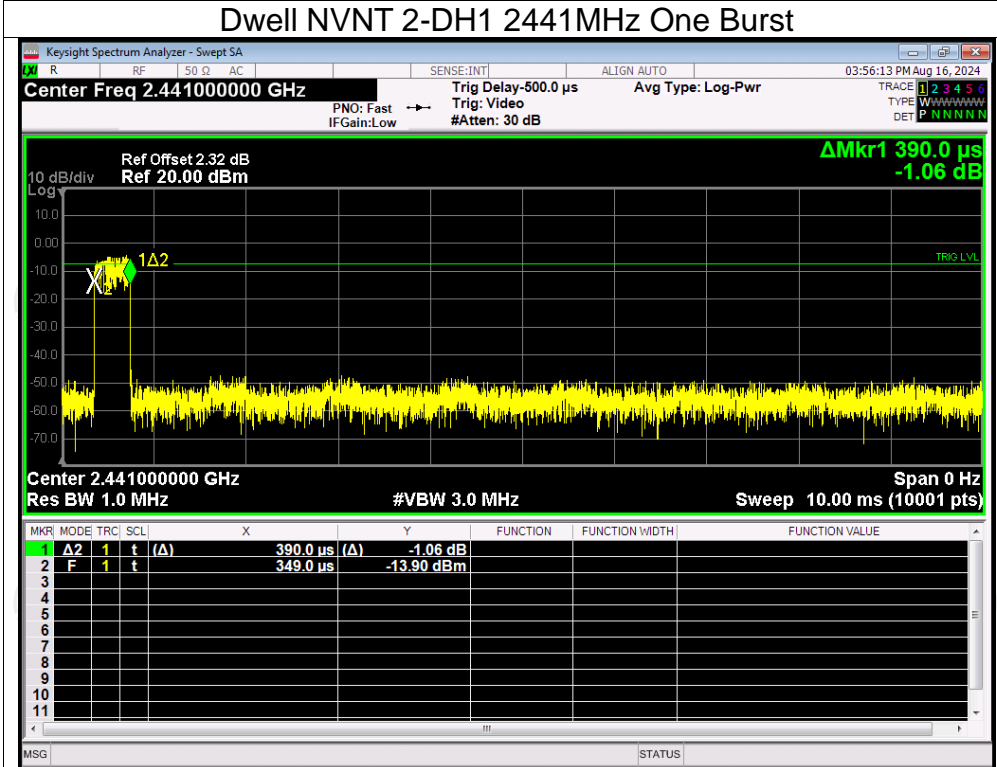
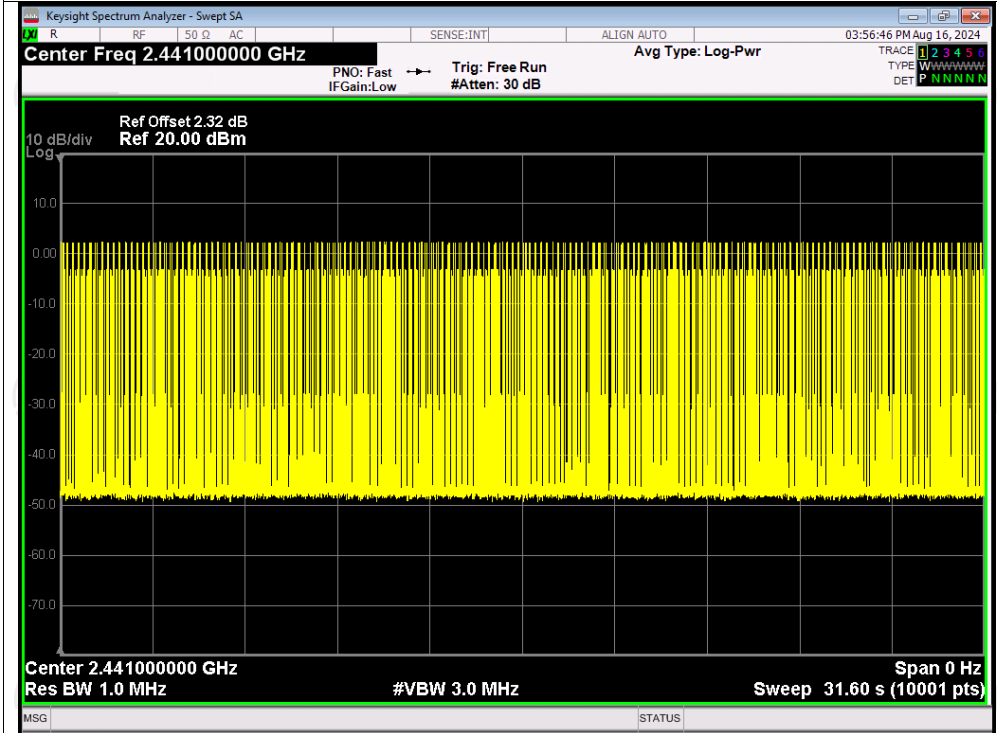


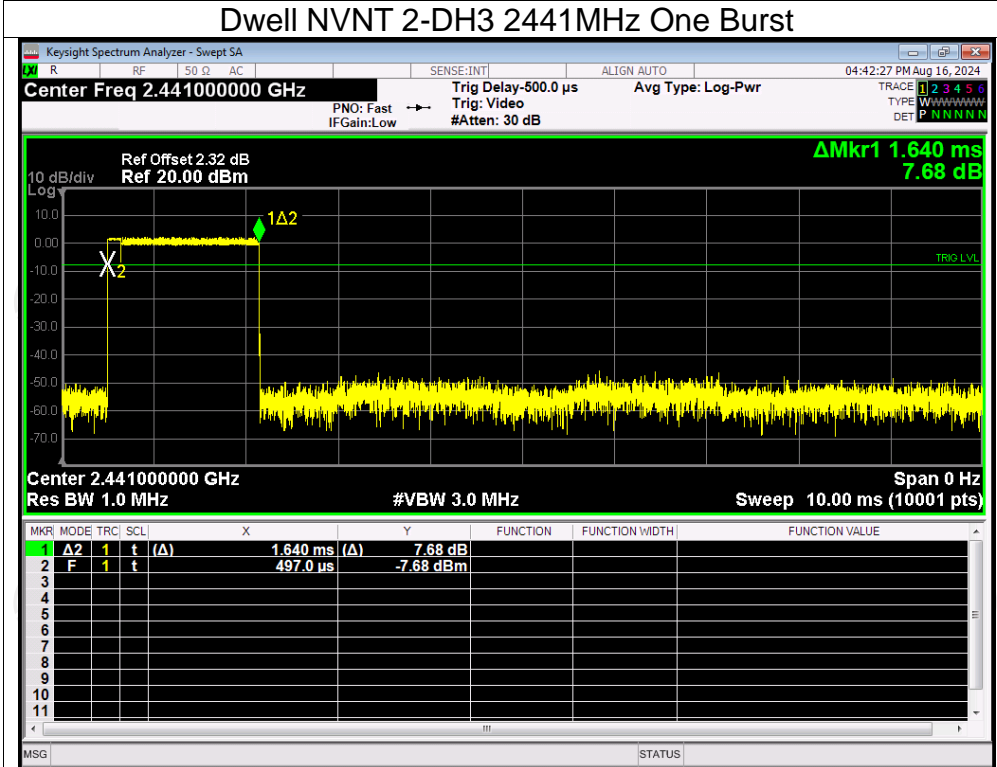
Dwell NVNT 2-DH1 2441MHz One Burst



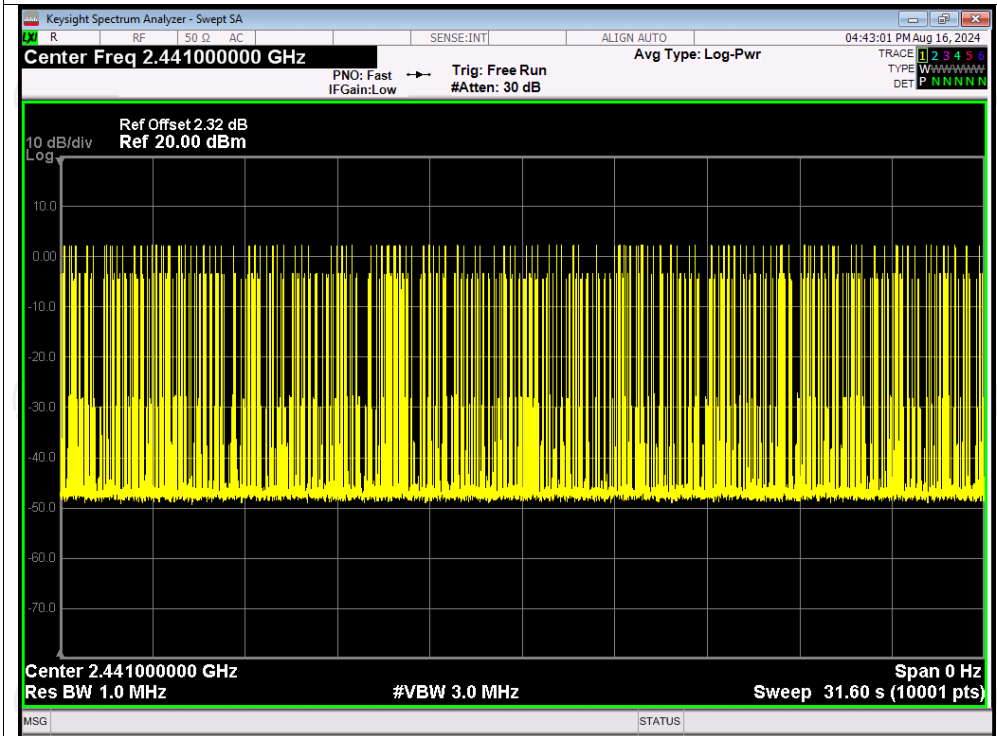
Dwell NVNT 2-DH1 2441MHz Accumulated

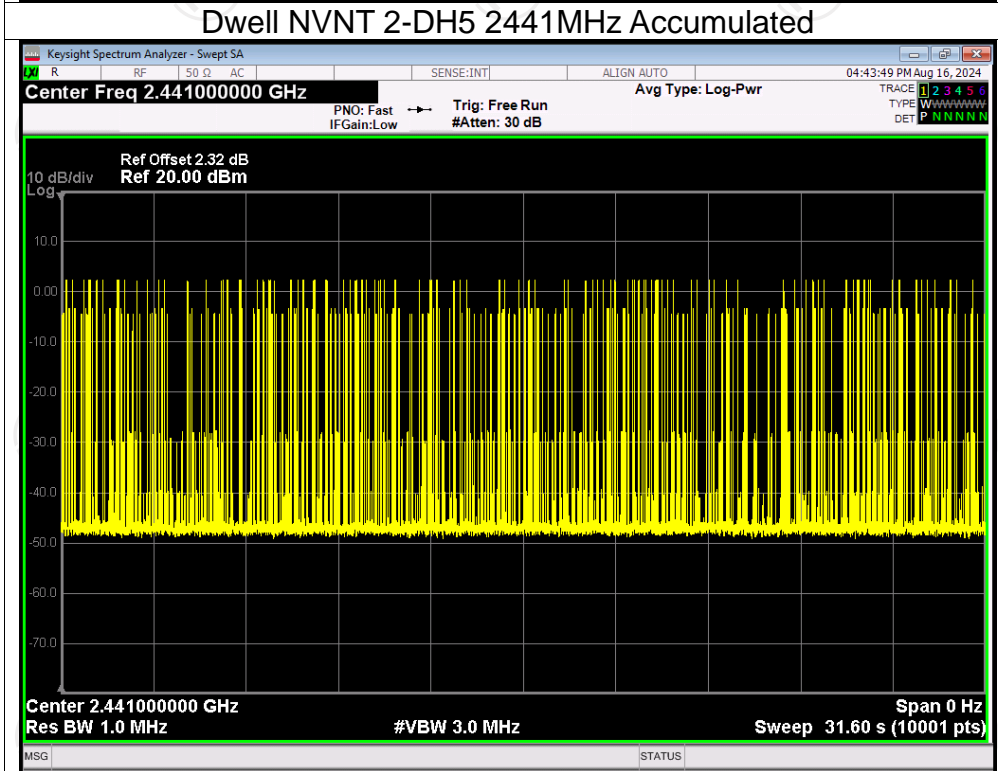
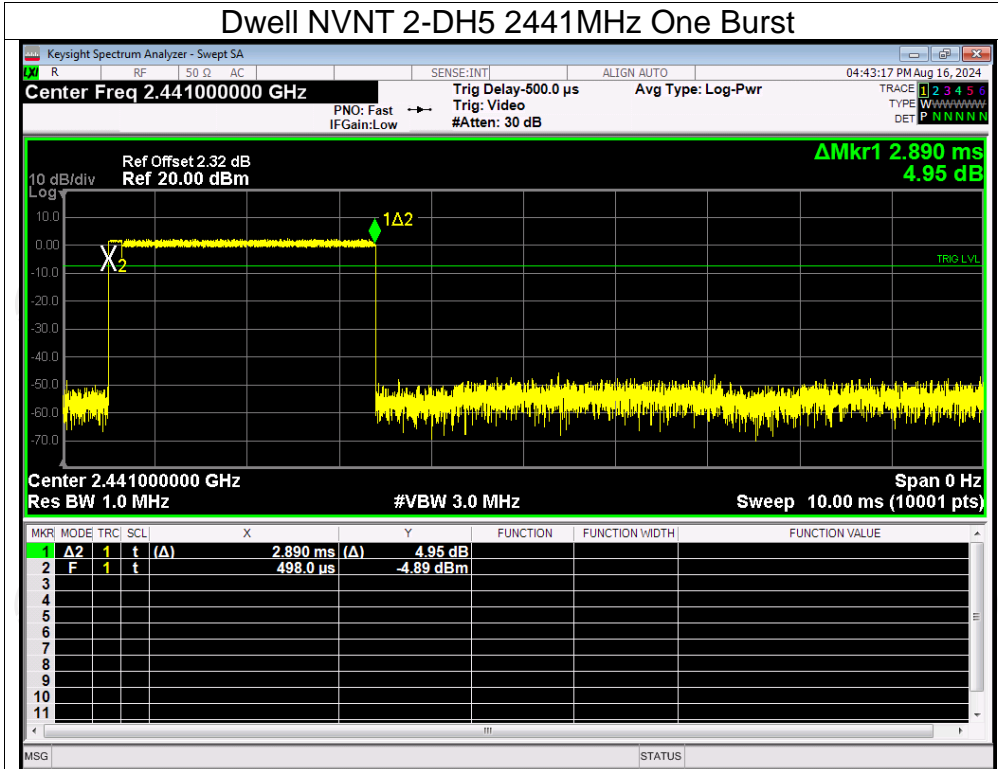


Dwell NVNT 2-DH3 2441MHz One Burst

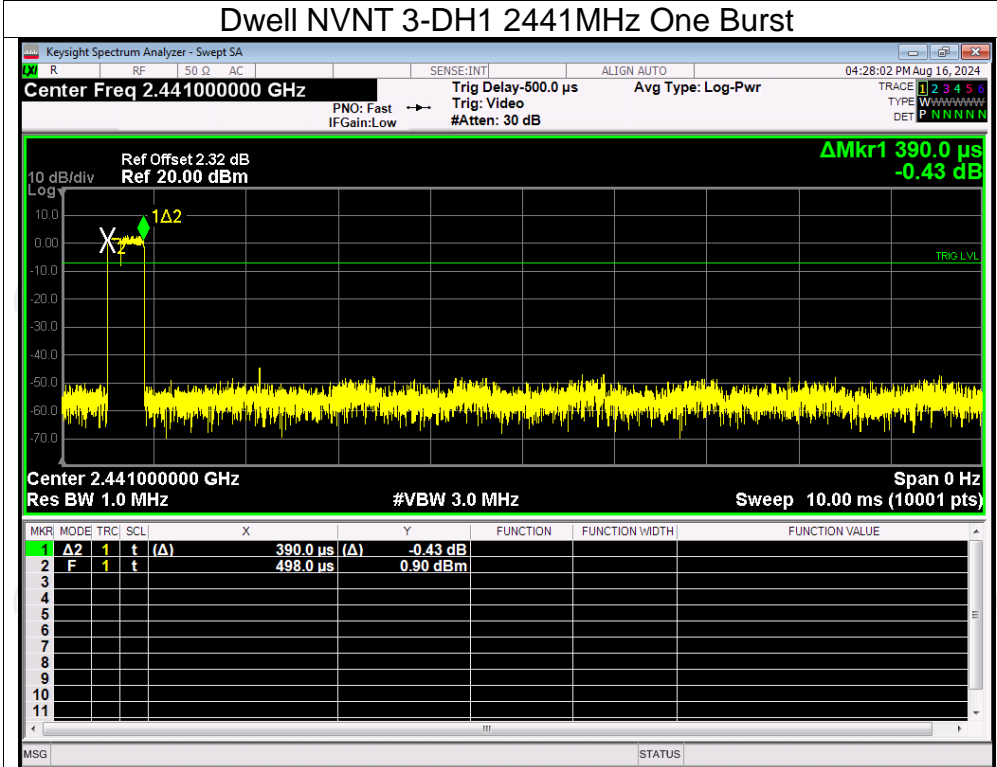


Dwell NVNT 2-DH3 2441MHz Accumulated

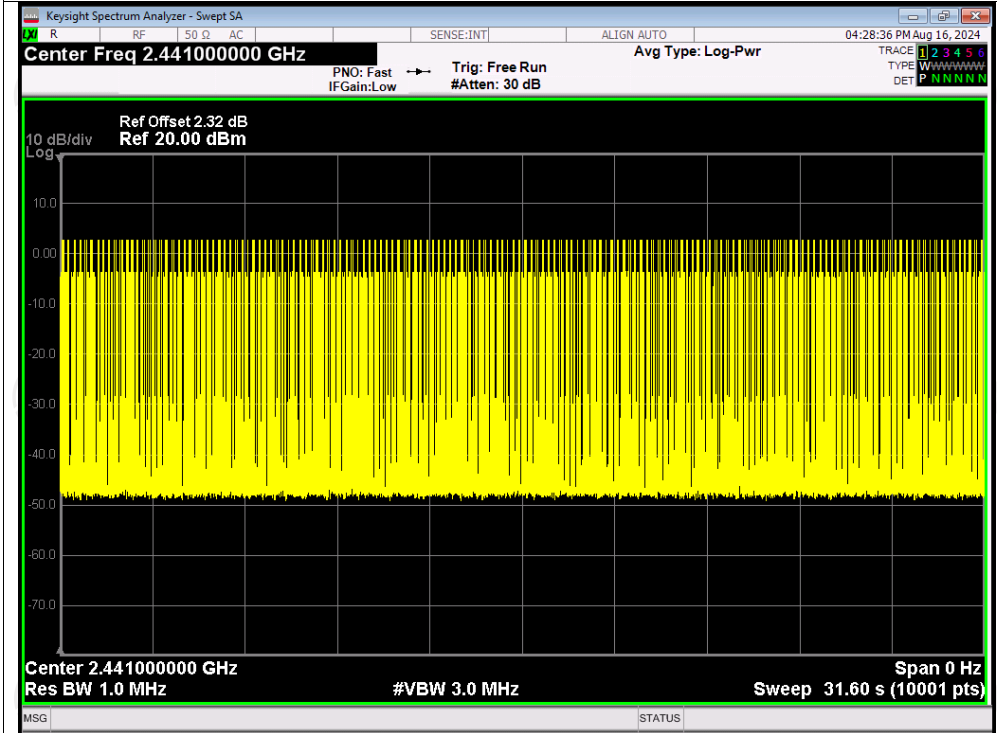




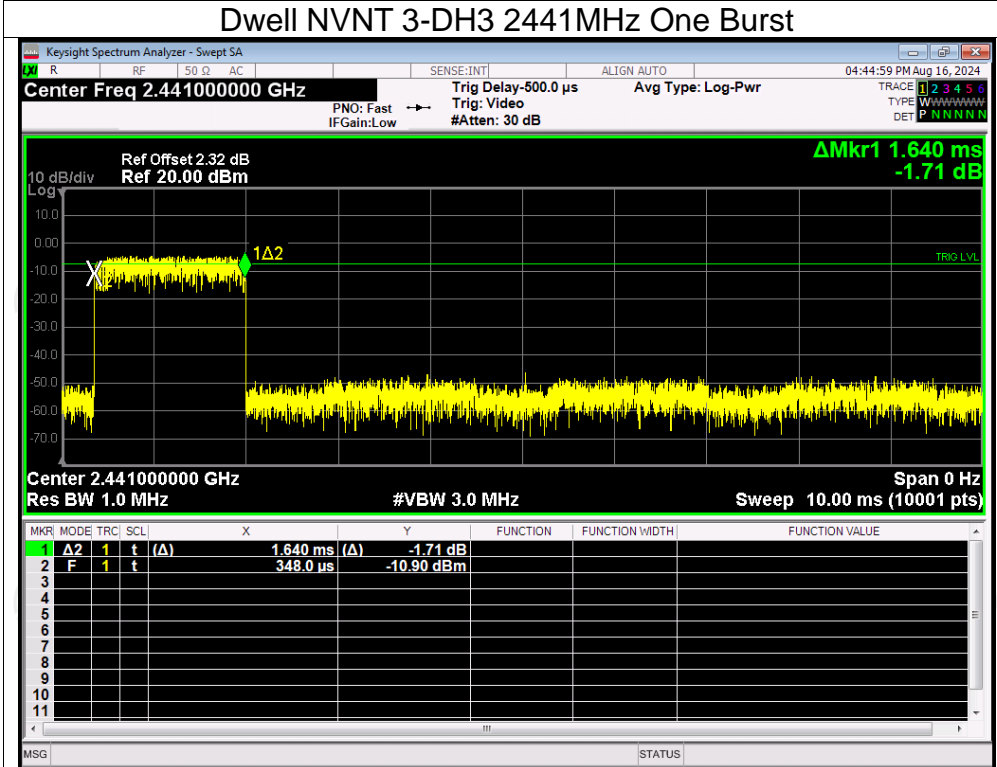
Dwell NVNT 3-DH1 2441MHz One Burst



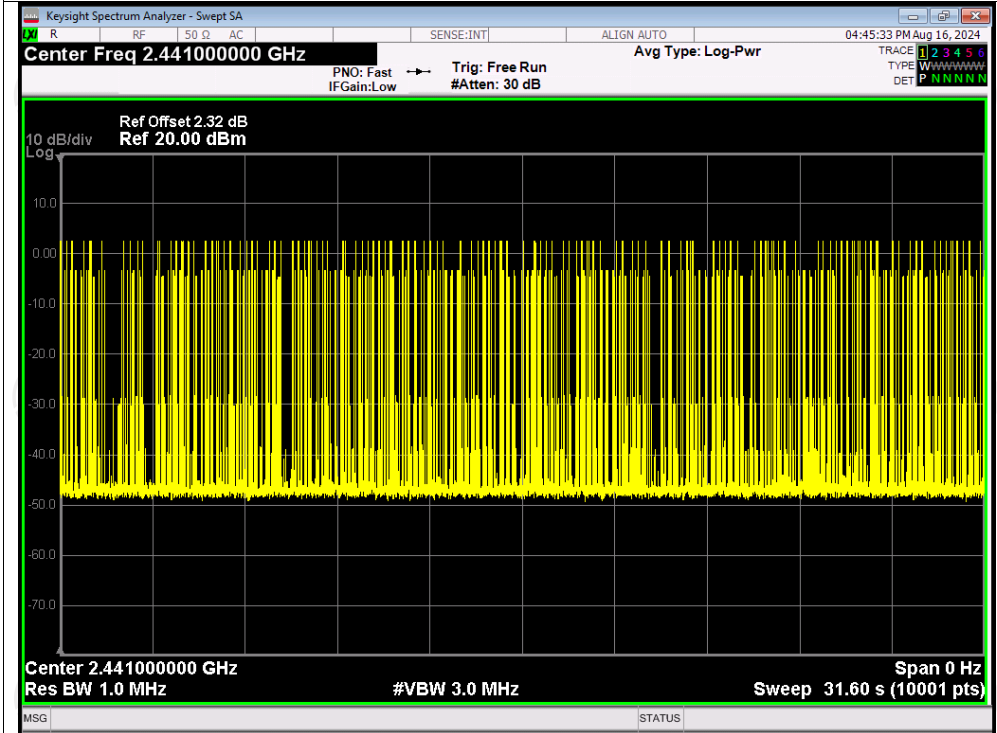
Dwell NVNT 3-DH1 2441MHz Accumulated



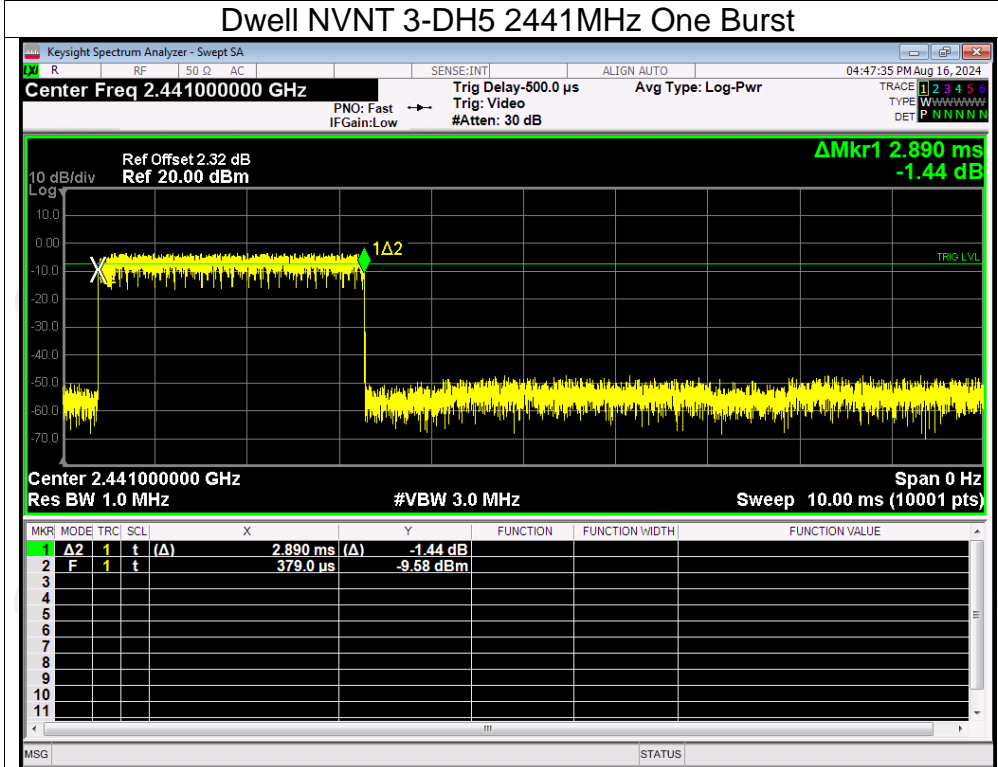
Dwell NVNT 3-DH3 2441MHz One Burst



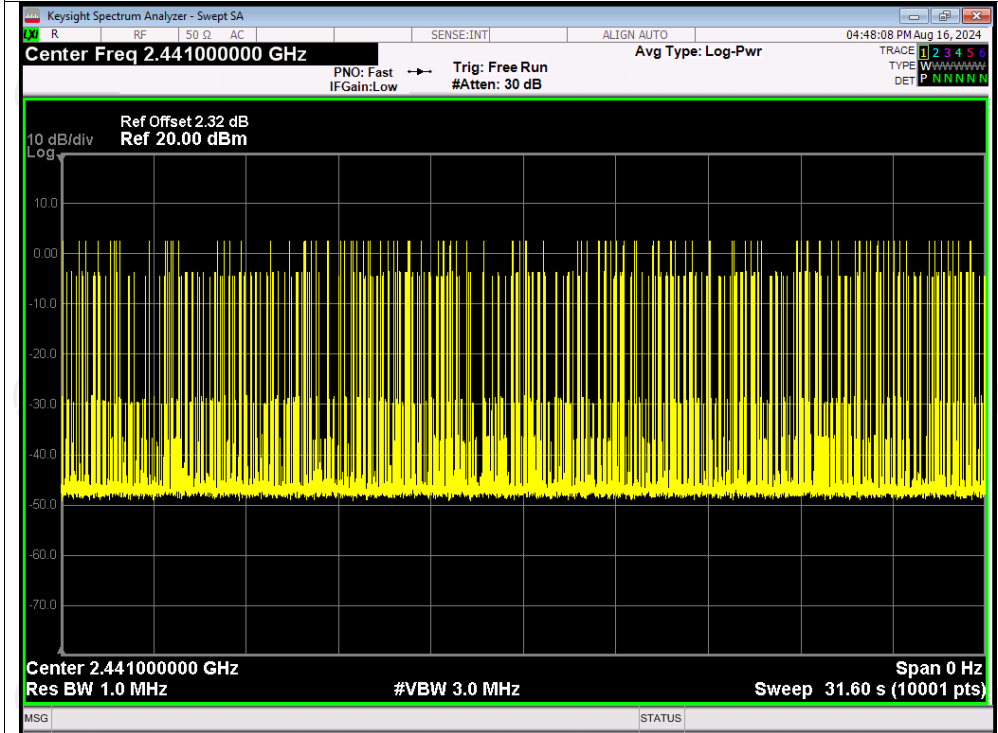
Dwell NVNT 3-DH3 2441MHz Accumulated



Dwell NVNT 3-DH5 2441MHz One Burst



Dwell NVNT 3-DH5 2441MHz Accumulated

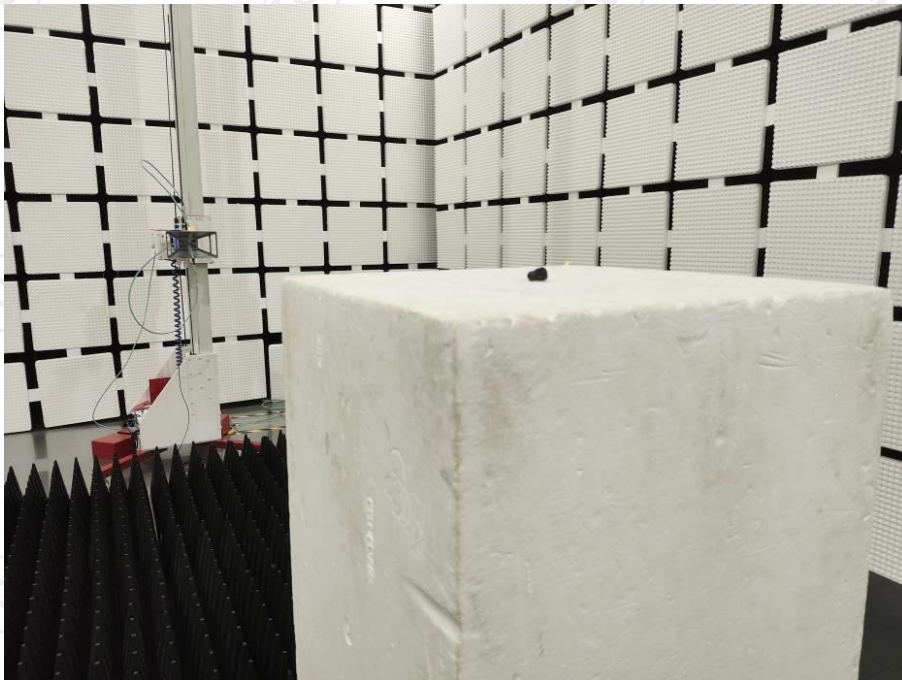
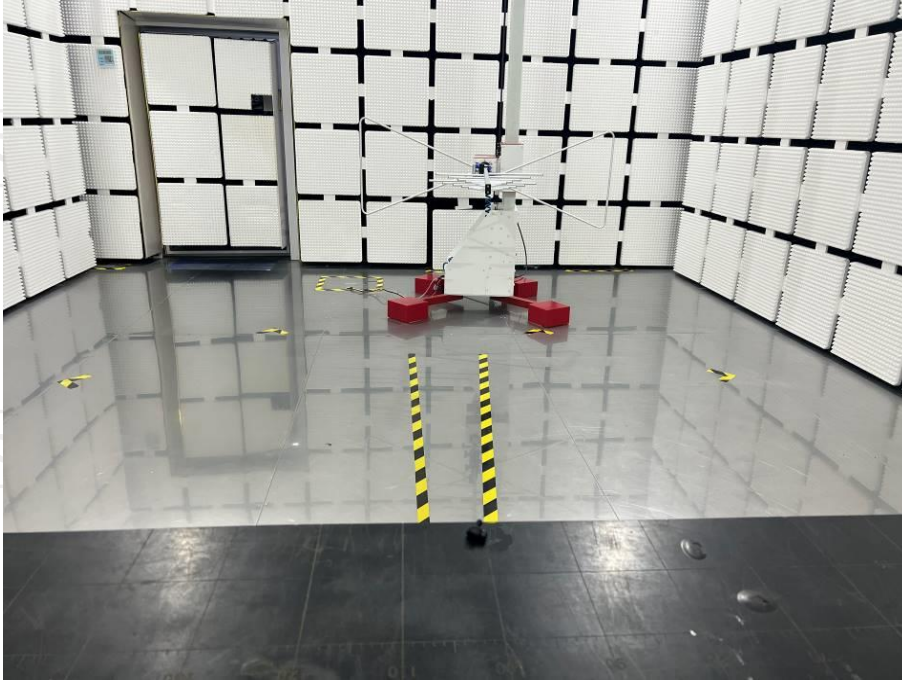


Appendix B: Photographs of Test Setup

Product: ANC TWS Earbuds

Model: Xpods ANC

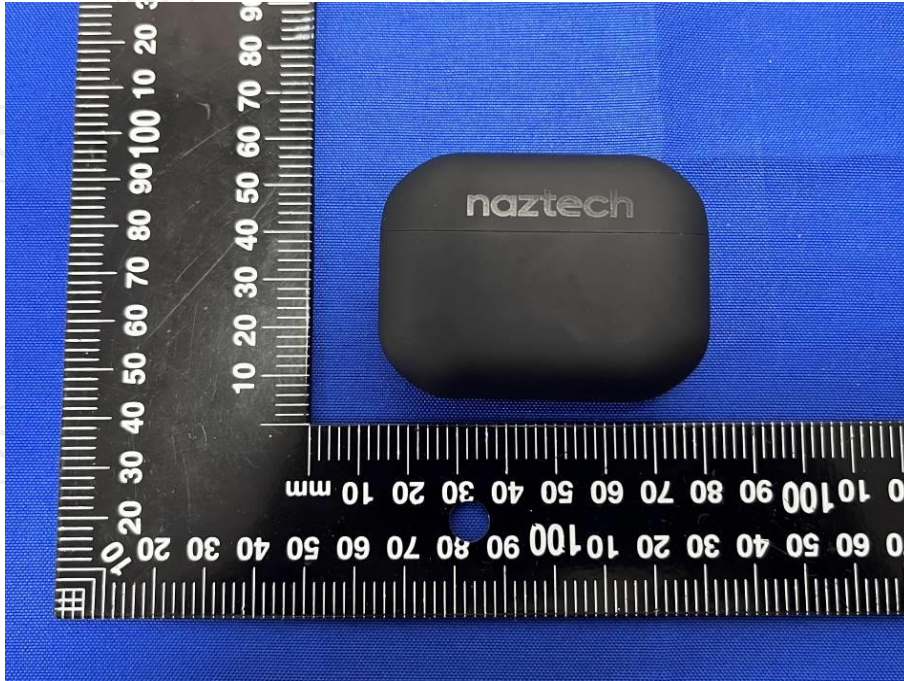
Radiated Emission

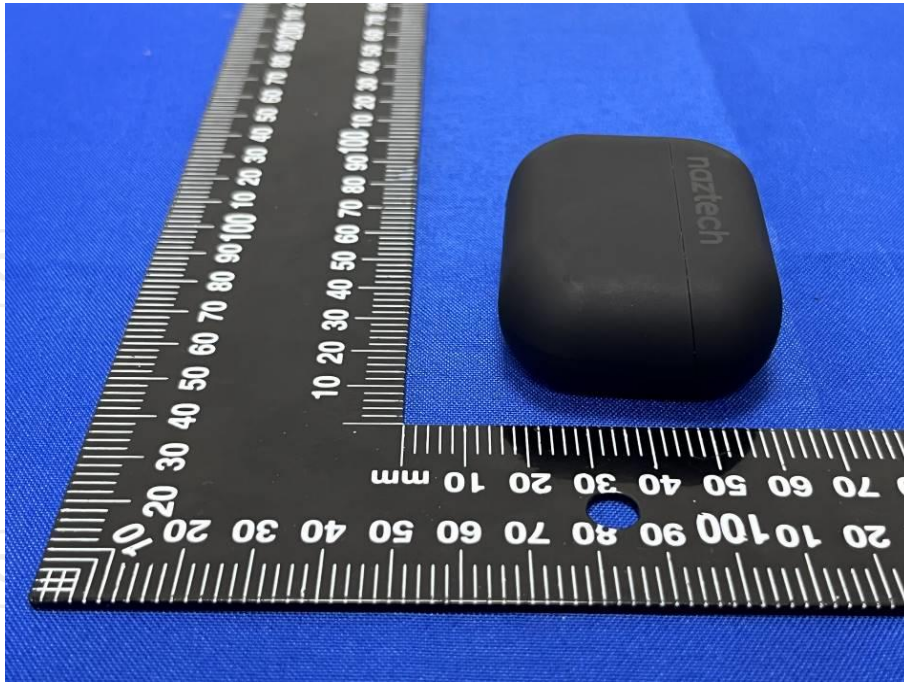


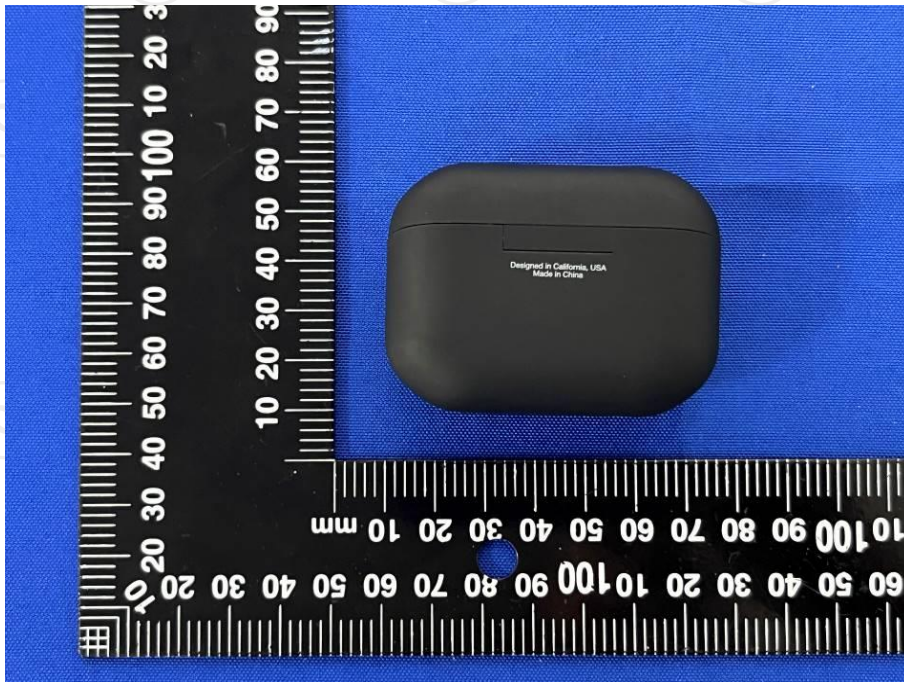
Conducted Emission



Appendix C: Photographs of EUT
Product: ANC TWS Earbuds
Model: Xpods ANC
External Photos







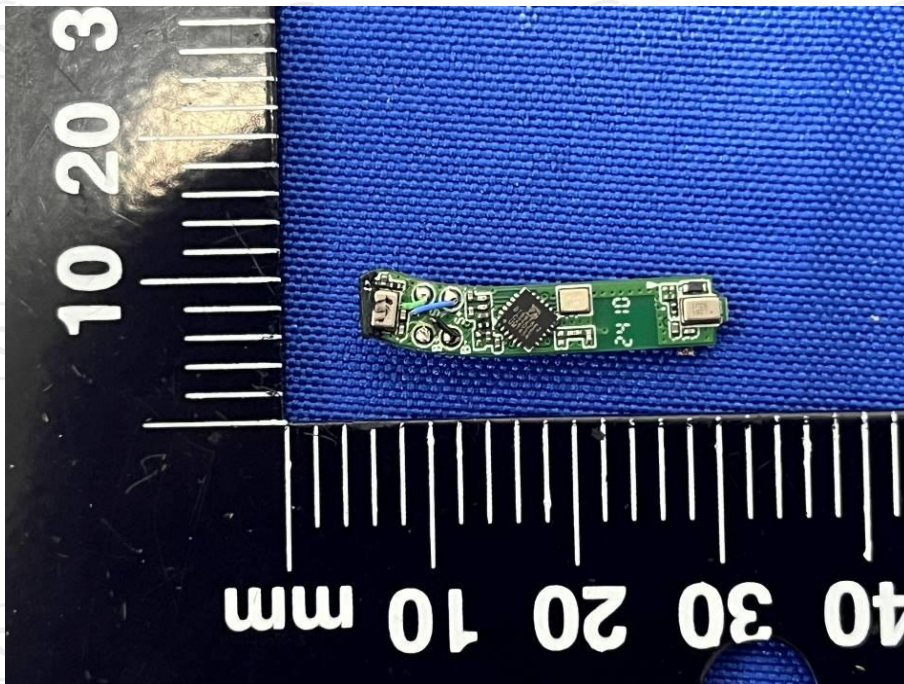


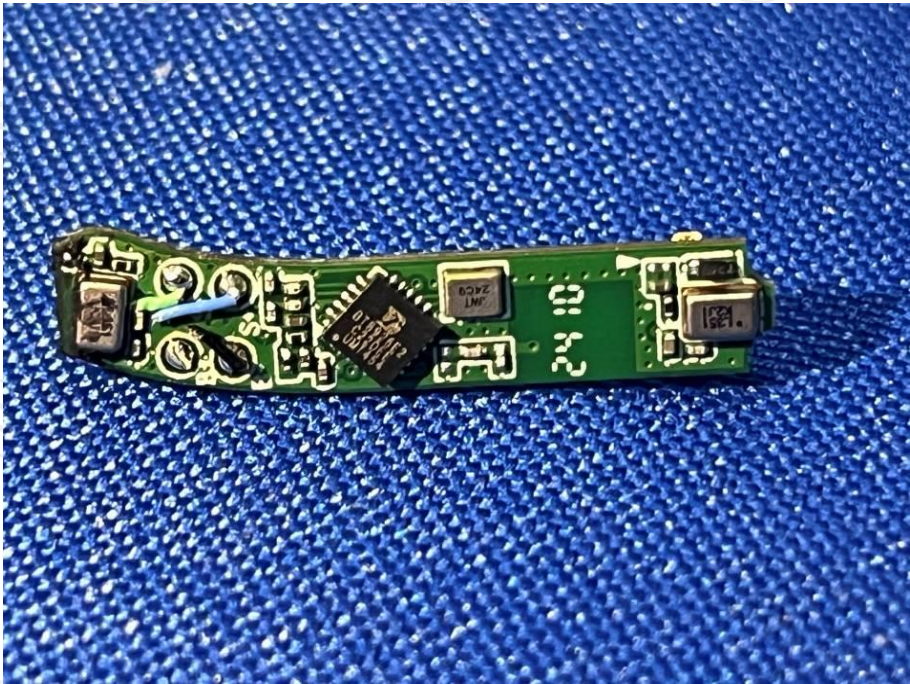
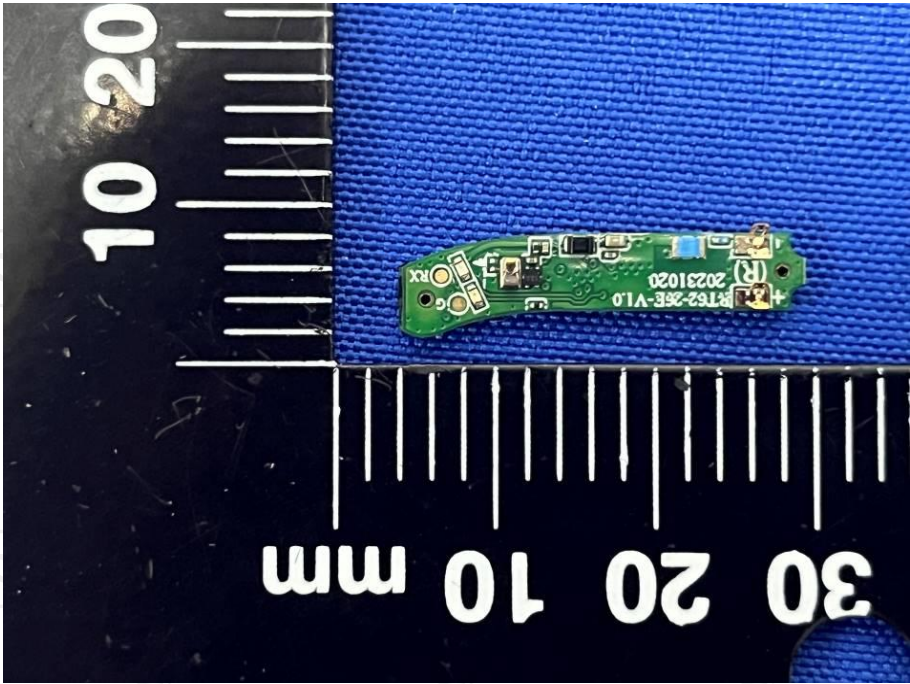


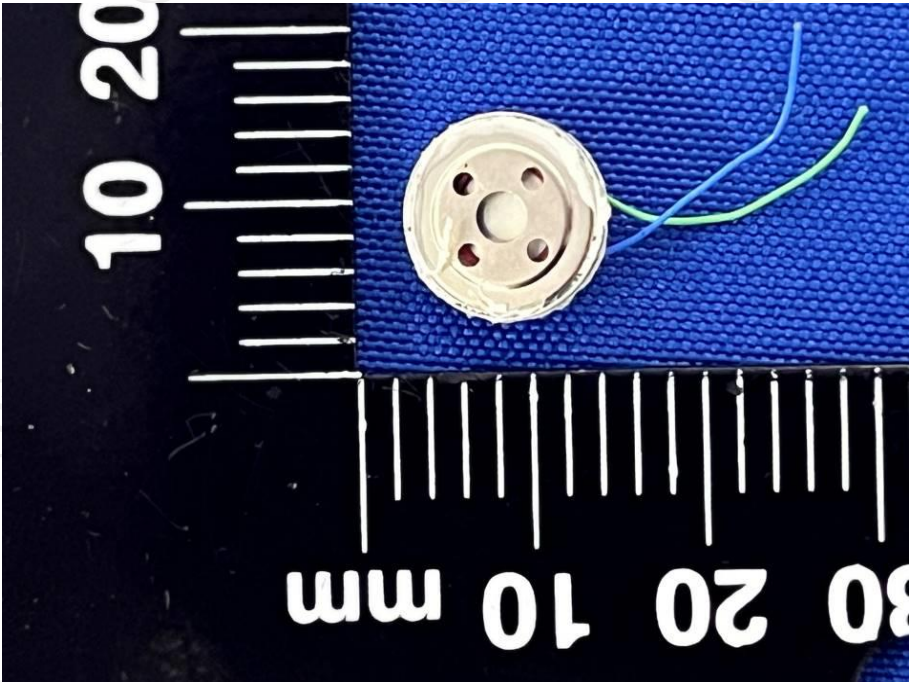
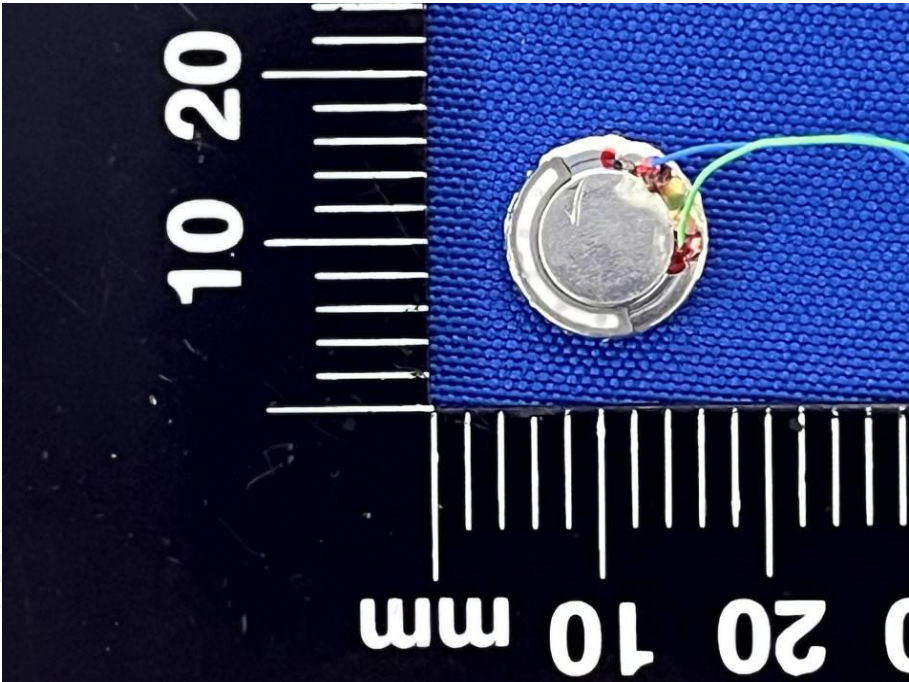


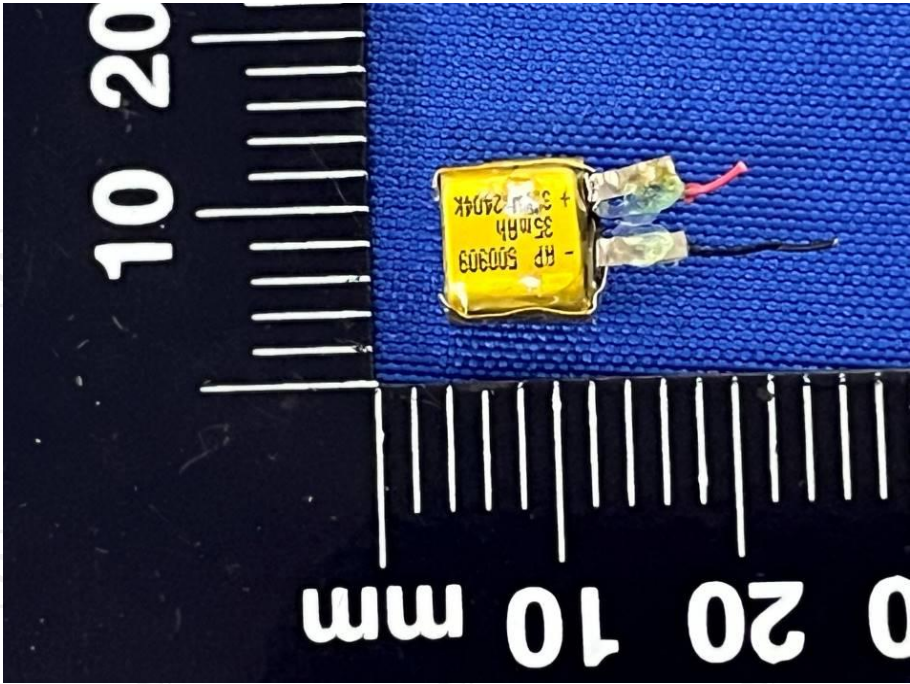


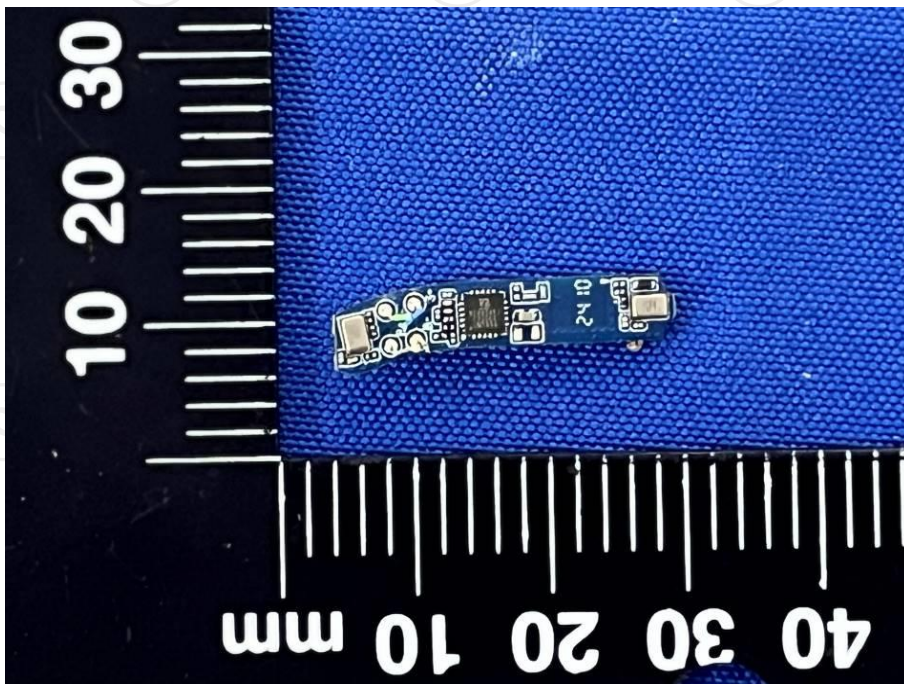
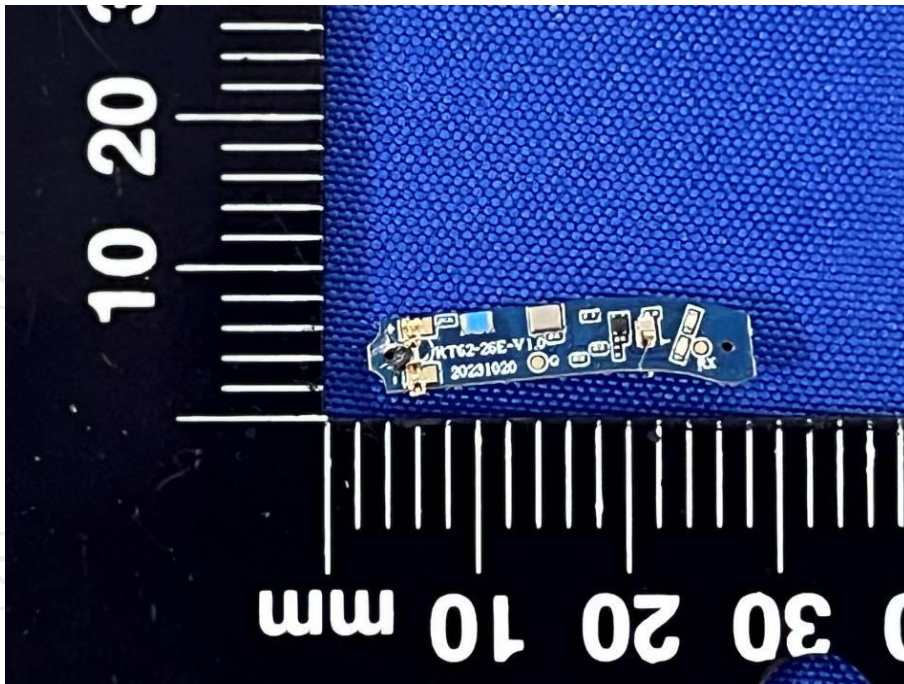
Product: ANC TWS Earbuds
Model: Xpods ANC
Internal Photos

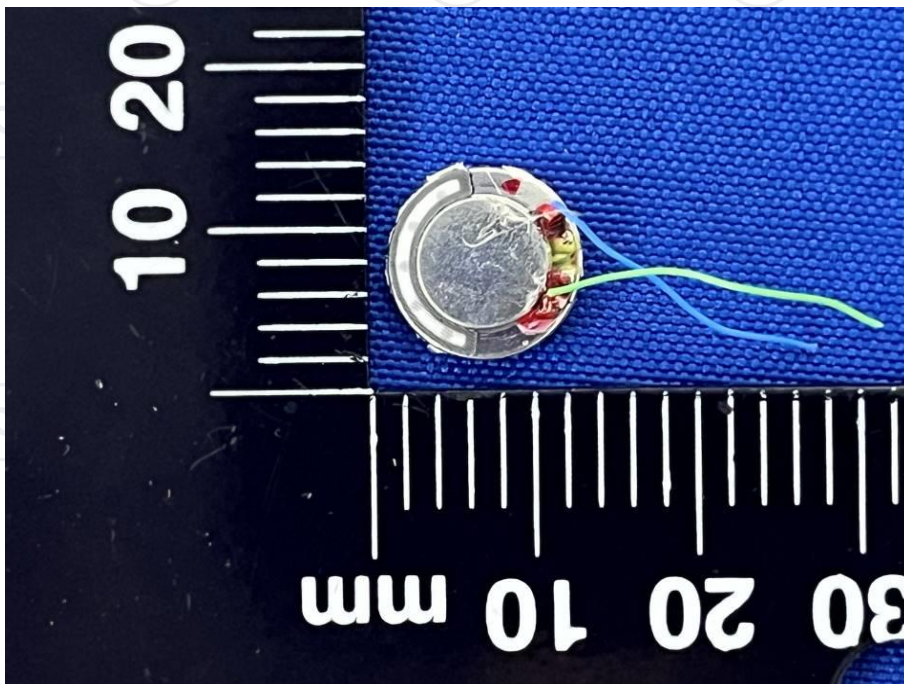
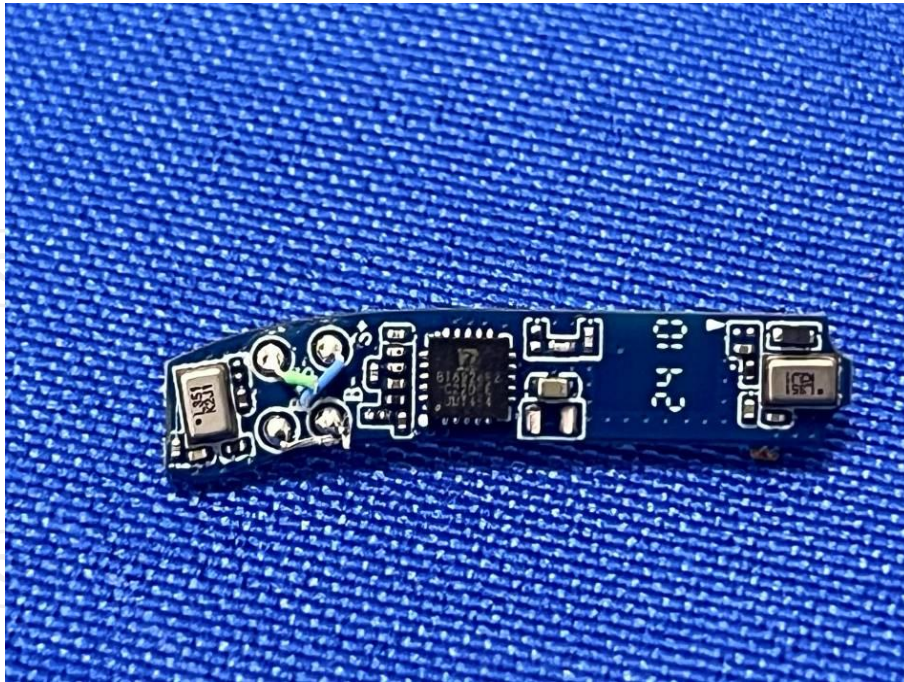


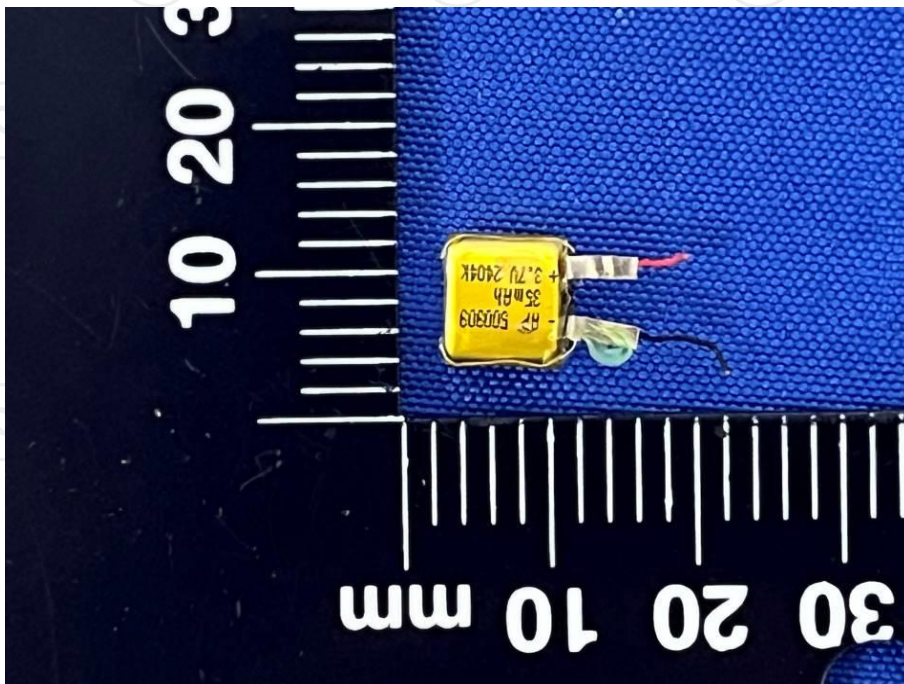
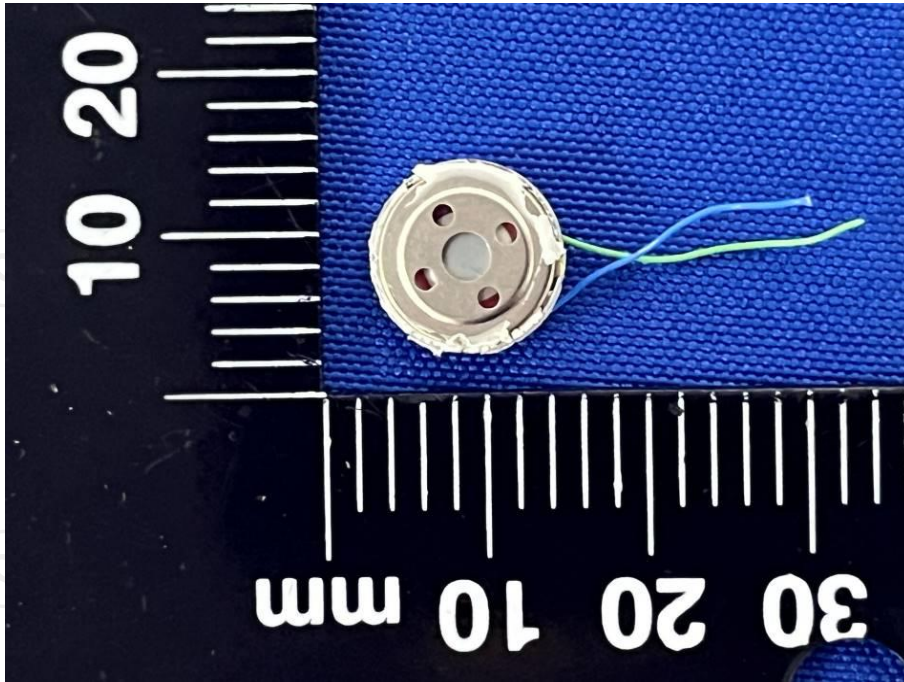












*****END OF REPORT*****