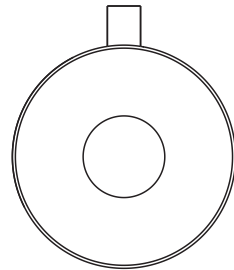




正面

Smart Finder User Manual



Please read this manual in its entirety before using it.

Introduction

T-tag smart finder is a small multi-function smart device that helps users to find misplaced items such as keys, wallets, bags, phones etc. T-tag also protects your belongings to prevent loss.

Quick Guide

1. Down load the "T-tag" APP in the APP Store or Google Play. Alternatively Scan the QR code with your smartphone

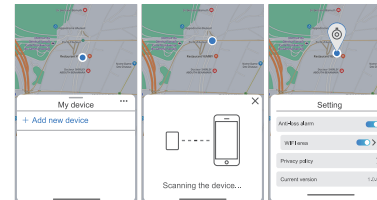


iOS



Android

2. Install the battery, press and hold the button until smart finder beep twice when activated. Open the "T-tag" APP, tap the "+" icon of the screen to add the devices, it will connect the application automatically. (Max add up to 6 devices) Note:some specific models only support up to 3 connected devices.



(a)

(b)

(c)

3. After the connection is successful, you can edit the device name and turn on/off "lost reminder" function in the edit interface.

4. Save the setting and on the go.

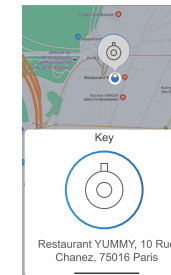
①

②

How to use

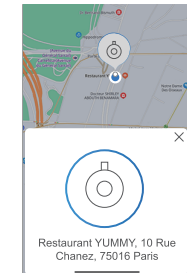
Attach the tracker to anything you want to find and protect (Make sure your tracker and your phone APP are connected with Bluetooth and within range of each other.)

Ring your things: Click the product icon in the app to ring smart finder which can be attached to your valuable items like keys, wallets, purses, luggage, cameras, bikes, tablets, backpacks, etc.



③

Ring your phone: Double-click the button on smart finder to ring your phone. This can help you find your phone in seconds, even if it's on silent mode.



Lost location: In order to use this feature, you have to activate the GPS on your smartphone.

If you lose your smart finder or the object equipped with it, the last lost location will be saved automatically. You can see this location by pressing within the app.

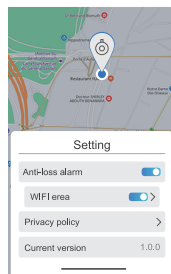
④

背面

Setting: In configure important settings for your smart finder, press ... within the app.

Disconnecting Notification

Toggle on the "Disconnecting Notification", both your phone and smart finder will alarm when it is out of the Bluetooth range. This is to remind you don't leave your things behind. Toggle off to disable the anti-lost alarm function.



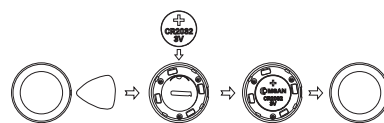
⑤

Compatiable Smartphones

iOS	iOS12.0 or higher
Android	Android4.3 or higher

Battery Replacement

1. Open the outer shell with the opening tool provided.
2. Replace CR2032 battery. Please mind the polarity of battery.
3. Close the outer shell.



(Installing new batteries)

⑥

CAUTION

- a. The tracker is not waterproof and can not be placed in water.
- b. Do not attach the tracker in a high temperature environment that will affect the performance of the equipment.
- c. The tracker contains small parts, please keep them out of reach of young children.
- d. If the tracker is damaged, it should not be discarded. It should be put into the recycling station to avoid pollution of the environment.

FAQ

What is the working range between the tracker and the phone?

Usually the wireless range is around 10-50meters. As a Bluetooth signal will be affected by the surrounding environment, the effective range may vary.

How many trackers can be paired with one phone?
Max add up to 6 devices.

⑦

How long does the tracker's battery last?

Usually, the tracker's battery life can be last for 3-6months, the battery life may vary according to different using circumstances. When the tracker's connection is unstable, please replace the battery.

What are the factors that affect the stability of the Bluetooth connection between your phone and the tracker?

- a. The phone has no enough RAM.
- b. Battery low.
- c. Environment, such as weather, metal, same frequency signal interference, human body, wall etc.

FCC Caution:

This device complies with part 15 of the FCC Rules. Operation is subject to the following two conditions: (1) This device may not cause harmful interference, and (2) this device must accept any interference received, including interference that may cause undesired operation.

Any Changes or modifications not expressly approved by the party responsible for compliance could void the user's authority to operate the equipment.

⑧

Note: This equipment has been tested and found to comply with the limits for a Class B digital device, pursuant to part 15 of the FCC Rules. These limits are designed to provide reasonable protection against harmful interference in a residential installation.

This equipment generates uses and can radiate radio frequency energy and, if not installed and used in accordance with the instructions, may cause harmful interference to radio communications. However, there is no guarantee that interference will not occur in a particular installation. If this equipment does cause harmful interference to radio or television reception, which can be determined by turning the equipment off and on, the user is encouraged to try to correct the interference by one or more of the following measures:

- Reorient or relocate the receiving antenna.
- Increase the separation between the equipment and receiver.
- Connect the equipment into an outlet on a circuit different from that to which the receiver is connected.
- Consult the dealer or an experienced radio/TV technician for help.

The device has been evaluated to meet general RF exposure requirement. The device can be used in portable exposure condition without restriction.



MADE IN CHINA

⑨

技术要求

尺寸
材质
印刷

单页：56*76mm 展开：280*76mm
80g书写纸
英文10个页面 4C彩色双面印刷 风琴折

名称
型号
设计

蓝牙寻找器说明书EN(中性)
T-tag
Jafir
版本
日期
V1
2022.9.22