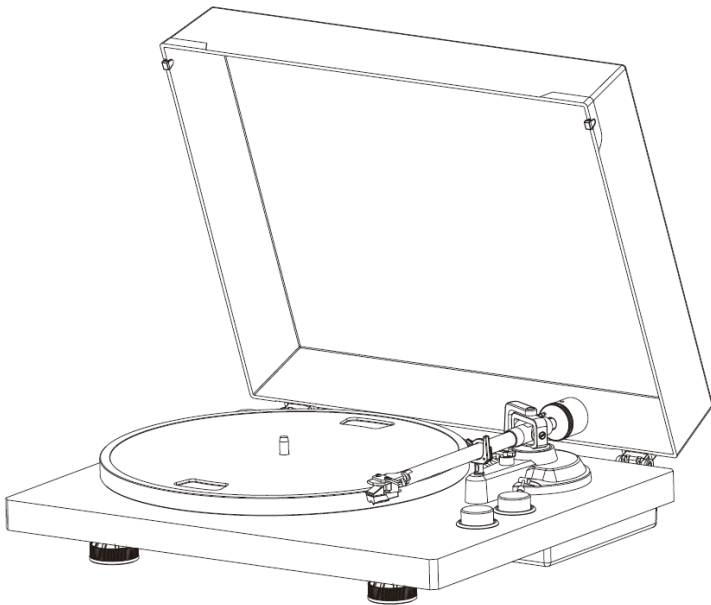


# Lenco

**Model: < D!< \$\$)**

2AQ4R-HP-H005



**User manual - Turntable with bluetooth transmission**  
**Gebruikshandleiding - Platenspeler met Bluetooth-overdracht**  
**Bedienungsanleitung - Plattenspieler mit Bluetooth-Übertragung**  
**Guide d'utilisation - tourne-disque avec transmission Bluetooth**  
**Manual de usuario – Tocadiscos con transmisión Bluetooth**

Index	
English.....	2
Nederlands.....	24
Deutsch.....	48
Français.....	73
Español.....	98

Version: 1.0

**CAUTION:**

Usage of controls or adjustments or performance of procedures other than those specified herein may result in hazardous radiation exposure.

This unit should not be adjusted or repaired by anyone except qualified service personnel.

**PRECAUTIONS BEFORE USE**

---

**KEEP THESE INSTRUCTIONS IN MIND:**

1. Do not use this device near water.
2. Clean only with a slightly damp cloth.
3. Do not cover or block any ventilation openings. When placing the device on a shelf, leave 5 cm (2") free space around the whole device.
4. Install in accordance with the supplied user manual.
5. \* Don't step on or pinch the power adaptor. Be very careful, particularly near the plugs and the cable's exit point. Do not place heavy items on the power adaptor, which may damage it. Keep the entire device out of children's reach! When playing with the power cable, they can seriously injure themselves.
6. \* Unplug this device during lightning storms or when unused for a long period.
7. Keep the device away from heat sources such as radiators, heaters, stoves, candles and other heat-generating products or naked flame.
8. Avoid using the device near strong magnetic fields.
9. Electrostatic discharge can disturb normal usage of this device. If so, simply reset and restart the device following the instruction manual. During file transmission, please handle with care and operate in a static-free environment.

10. Warning! Never insert an object into the product through the vents or openings. High voltage flows through the product and inserting an object can cause electric shock and/or short circuit internal parts. For the same reason, do not spill water or liquid on the product.
11. Do not use in wet or moist areas such as bathrooms, steamy kitchens or near swimming pools.
12. Do not use this device when condensation may occur.
13. Although this device is manufactured with the utmost care and checked several times before leaving the factory, it is still possible that problems may occur, as with all electrical appliances. If you notice smoke, an excessive build-up of heat or any other unexpected phenomena, you should disconnect the plug from the main power socket immediately.
14. This device must operate on a power source as specified on the specification label. If you are not sure of the type of power supply used in your home, consult your dealer or local power company.
15. \* The socket outlet must be installed near the equipment and must be easily accessible.
16. \* Do not overload ac outlets or extension cords. Overloading can cause fire or electric shock.
17. \* Devices with class 1 construction should be connected to a main socket outlet with a protective earthed connection.
18. \* Devices with class 2 construction do not require a earthed connection.
19. Keep away from rodents. Rodents enjoy biting on power cords.
20. \* Always hold the plug when pulling it out of the main supply socket. Do not pull the power cord. This can cause a short circuit.
21. Avoid placing the device on any surfaces that may be subject to vibrations or shocks.

22. To clean the device, use a soft dry cloth. Do not use solvents or petrol based fluids. To remove severe stains, you may use a damp cloth with dilute detergent.
23. The supplier is not responsible for damage or lost data caused by malfunction, misuse, modification of the device or battery replacement.
24. Do not interrupt the connection when the device is formatting or transferring files. Otherwise, data may be corrupted or lost.
25. If the unit has USB playback function, the usb memory stick should be plugged into the unit directly. Don't use an usb extension cable because it can cause interference resulting in failing of data.
26. The apparatus shall not be exposed to dripping or splashing and make sure that no objects filled with liquids, such as vases, are placed on or near the apparatus.
27. \* To completely disconnect the power input, the mains plug of the apparatus shall be disconnected from the mains, as the disconnect device is the mains plug of apparatus.
28. If the unit works with battery, Battery shall not be exposed to excessive heat such as sunshine, fire or the like.
29. Attention should be drawn to the environmental aspects of battery disposal.
30. The apparatus can only be used in moderate extremely cold or climates warm environments should be avoided.
31. The rating label has been marked on the bottom or back panel of the apparatus.
32. This device is not intended for use by people (including children) with physical, sensory or mental disabilities, or a lack of experience and knowledge, unless they're under supervision or have received instructions about the correct use of the device by the person who is responsible for their safety.

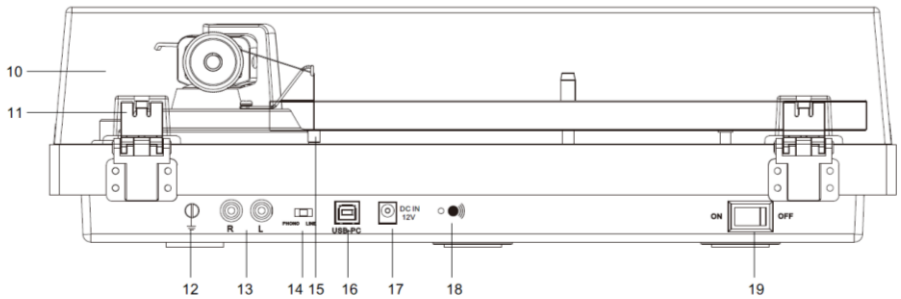
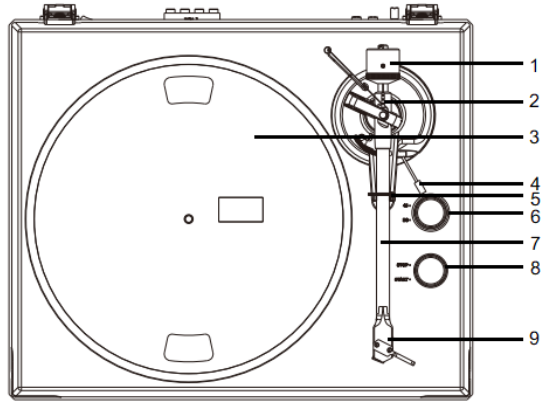
33. This product is intended for non professional use only and not for commercial or industrial use.
34. Make sure the unit is adjusted to a stable position. Damage caused by using this product in an unstable position or by failure to follow any other warning or precaution contained within this user manual will not be covered by warranty.
35. Never remove the casing of this apparatus.
36. Never place this apparatus on other electrical equipment.
37. Do not use or store this product in a place where it is subject to direct sunlight, heat, excessive dust or vibration.
38. Do not allow children access to plastic bags.
39. Only use attachments/accessories specified by the manufacturer.
40. Refer all servicing to qualified service personnel. Servicing is required when the apparatus has been damaged in any way, such as the power supply cord or the plug, when liquid has been spilled or objects have fallen into the apparatus, when the apparatus has been exposed to rain or moisture, does not operate normally, or has been dropped.
41. \*Do not use a damaged power cord or plug or a loose outlet. Doing so may result in fire or electric shock.
42. Prolonged exposure to loud sounds from personal music players may lead to temporary or permanent hearing loss.

## **INSTALLATION**

- Unpack all parts and remove protective material.
  - \*Do not connect the unit to the mains before checking the mains voltage and before all other connections have been made.
- \* **Those instructions are related only to products using power cable or AC power adaptor.**

## COMPONENTS, FEATURES AND CONNECTIONS

1. Counterweight
2. Anti-skating Stub
3. Turntable Platter
4. Tonearm Lift Lever
5. Tonearm Rest
6. 33/45 Selector
7. Tonearm
8. Stop/Start Knob
9. Cartridge



- |   |  |
|---|--|
| <ol style="list-style-type: none"> <li>10. Lid</li> <li>11. Lid Hinge</li> <li>12. Ground Connector</li> <li>13. PHONO &amp; Line Out Jacks</li> <li>14. PHONO &amp; Line Out Switch</li> </ol> | <ol style="list-style-type: none"> <li>15. Anti-skating Weight</li> <li>16. USB-PC port</li> <li>17. AC-DC Power Jack</li> <li>18. Bluetooth Indicator</li> <li>19. Power Rocker Switch</li> </ol> |
|---|--|

Please check thoroughly and make sure you find the following items that come along with this package:

- |                                |                                   |
|--------------------------------|-----------------------------------|
| 1) Unit                        | 7) Instruction Manual             |
| 2) Adaptor with EU-UK plug-end | 8) Cartridge Alignment Protractor |
| 3) Counterweight               | 9) USB-PC Cable                   |
| 4) Platter with Belt           | 10) 2pcs lid spare rubber         |
| 5) 45 RPM Adaptor              | 11) Anti-skating Weight           |
| 6) Turntable mat               |                                   |

This turntable is supplied with a factory fitted and adjusted cartridge.

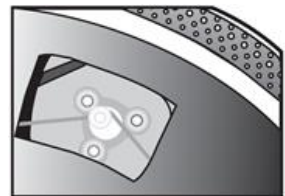
\*\*The following instructions for adjusting the cartridge are provided in case the cartridge is replaced by a different model at a later date.

### **Installing the Lid**

Install the **Lid** carefully over the hinge prongs.

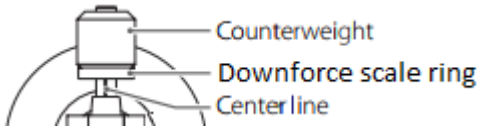
### **Turntable Platter and Belt Setup**

1. Install the drive belt over the inner ring under the platter and make sure it won't fall off during the setup.
2. Place the platter through the turntable spindle, then rotate the platter until you see the drive motor pulley through the window at the top left corner.
3. Carefully grab the drive belt and put it around the slot of motor pulley.
4. Connect the power adapter to the turntable and power on the turntable.
5. Set the Motor Start/Stop switch to the Start position to see if the platter motor spins. If the platter does not spin, try the steps listed above again.





## Cartridge Down force Adjustment



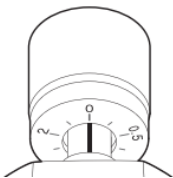
The **Counterweight** supplied is suitable for cartridges weighing between 3.0-6.0g.

- Gently push and turn the Counterweight onto the rear of the tonearm (with the scale facing toward the front of the turntable).
- Remove the cartridge protection cap.
- Lower the tonearm lift and position the cartridge in the space between tonearm rest and platter.

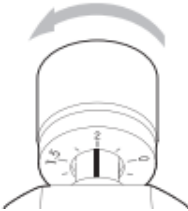
Carefully rotate the **Counterweight** until the tonearm balances out. The tonearm should return to the balanced position if it is moved up or down. This adjustment must be done carefully.



- Once the tonearm is correctly balanced return it to its' rest. Hold the **Counterweight** without moving it, and gently rotate the **Down force Scale** ring until the zero is in line with black line on the rear of the **tonearm**. Check whether the arm still balances out.



- Rotate the counterweight counter clockwise (seen from the front) to adjust the down force according to the cartridge manufacturer's recommendations. One mark on the scale represents 0.05g of down force.

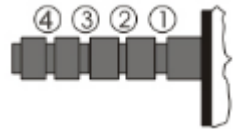


**NOTE:** The recommended down force for the factory fitted cartridge is  $3.5 \pm 0.5g$ .

### Anti-skating force adjustment

The anti-skating force must be adjusted corresponding to the down force as follows:

<u>Down force</u>	<u>Groove in the stub</u>
5 - 10mN	1 st from bearing rings
10 - 15mN	2 nd " " "
15 – 20mN	3 <sup>rd</sup> " " "
20mN and bigger	4 th " " "



Slip the loop of the anti-skating weight's thread over the **3rd** groove of the stub to set the correct anti-skating force for the factory-fitted cartridge. Feed the thread through the loop of the wire support.

## Connection to the Amplifier

This turntable uses a moving magnetic cartridge. Set the **PHONO & Line Out Switch** on PHONO mode. Connect the phono out cables to the phono input on your amplifier or pre-amplifier (phono stage). **Line inputs such as CD, Tuner, Tape, or Video are not suitable for phono inputs.** Make sure the amplification of the selected input matches the type of cartridge being used. The factory installed cartridge is 47k ohms/MM-input.

NOTE: If your amplifier does not have an input suitable for phono cartridges, you will need to purchase a separate phono amplifier for moving magnetic cartridges. This separate phono amplifier will then connect between your turntable and your amplifier.

## Stereo System Connection

Set the **PHONO & Line Out Switch** on LINE mode. The RCA **PHONO & Line Out Jacks** output analog line-level signals and could be connected directly with a pair of active/powered speakers of the appropriate input of your stereo system.

The Red plug connects with the Right channel and the White plug connects with the Left channel.

NOTE: The RCA Jacks are not designed to be connected directly to the passive/unpowered speakers on LINE mode. If connected to the passive speakers, there is no sound.

## Main Power Connection

The power adaptor is in the foam packing material. Unpack the power adaptor and plug the small end into the **DC power jack** located at the back side of the turntable. Plug the power adaptor into your power outlet.

## Operation

### Turntable Operation

1. Connect the included power adapter to unit and press the power rocker switch to be “ON” position.
2. Remove the needle cover from the cartridge.
3. Place the slipmat on the platter and place a record on the slipmat. If using 45 RPM records, put the 45 RPM adapter on the center spindle before placing the record on the platter.
4. Set the 33/45 RPM Selector according to the type of record.
5. Turn the Start/Stop dial to the Start position to begin spinning the platter.
6. Unlock the arm clip and set the Lift Lever to the up position.
7. Position the tonearm over the desired location (groove) on the record.
8. Move the tonearm lift lever to the down position to move the tonearm toward the record. Alternatively, place the needle over the desired location on the record.
9. Carefully lower the tonearm on the record.
10. When you are finished playing the record, raise the tonearm, return it to rest on the arm clip, and turn the Start/Stop dial to the Stop.

### Bluetooth Operation

This unit has a Bluetooth transmitter to send audio to a Bluetooth speaker wirelessly.

1. Power on your Bluetooth speaker and ensure it is in pairing mode.
2. Power on the unit, the BT will auto search when the unit turn on, the BT indicated light flashing.
3. When pairing, the light will flash twice per second, then change to be long lighting when paired;

*Note:* This unit will connect to the closest Bluetooth speaker that is near it. If after 2 minutes no Bluetooth speaker can be found to pair

with, the Bluetooth transmitter will become inactive and the LED will turn off.

4. To disconnect pairing, power off the turntable or turn off Bluetooth pairing on your Bluetooth speaker.

### **Recording the LP into PC through USB jack:**

For installing and recording step please reference to the BRIEF INTRODUCTION OF AUDACITY. <http://audacity.sourceforge.net/>

Recording the vinyl to your computer:

- 1). Follow the detail step as above **Turntable Operation** to play the vinyl.
- 2). Double click the Audacity and follow the record steps showing on the BRIEF INTRODUCTION OF AUDACITY.

### **Audacity and USB Connection**

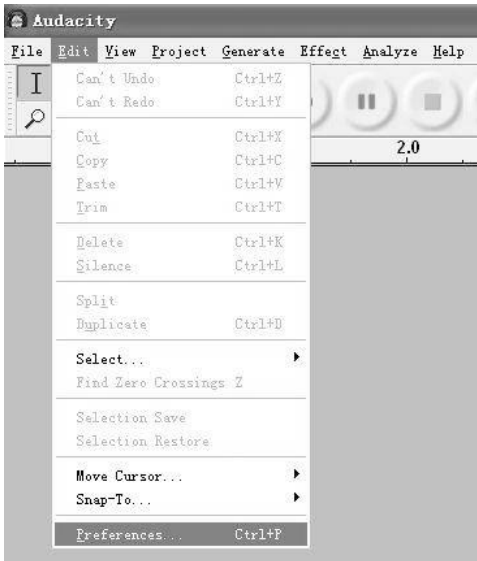
It supports Windows95/Window XP/Window 7/Vista or more advanced version, with the EMS memory more than 128MB and Audacity take space of 5MB.

### **Instruction for PC Encoding**

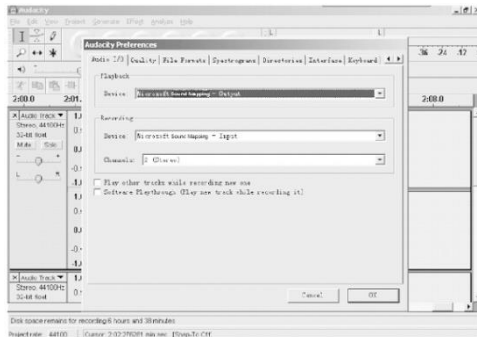
1. Software instruction
  - 1.1) Connect the USB cable with your turntable and your computer.  
No extra driver is required.
  - 1.2) Download the Audacity software from <http://audacity.sourceforge.net/>  
Follow the instructions to complete installation.
2. Recording
  - 2.1) Open the software



2.2) Choose “Edit” menu, then choose “Preferences”;



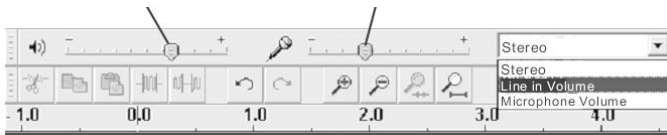
## 2.3) Audacity Preferences



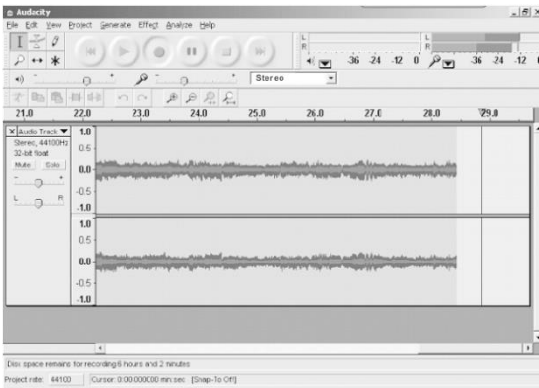
NOTE: you need to check your computer audio properties, the sound recording should be selected: "SSS USB Audio Device" as below:



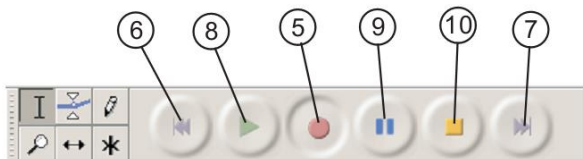
2.4) Adjust the output and input volume  
 Output volume                      Input Volume



2.5) Select the record button ● to record the disc, the left and right tracks will show on the interface:



- 2.5.1  Press this button ● , start recording.
- 2.5.2  Click the ◀◀ button to skip to start;
- 2.5.3  Click the ▶▶ button to skip to end;
- 2.5.4  Click the ▶ button to play;
- 2.5.5  Click the || button to pause the record play;
- 2.5.6  Click the ■ button to stop the recording.



### 3. Export the Music Files for WAV, MP3, Format.

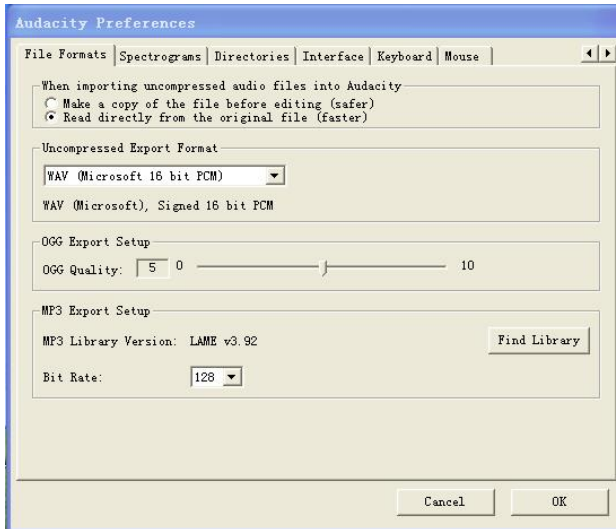
- Once you have finished recording, you should save your music to the computer.
- Click File menu and move down to Export as WAV format, MP3 format or Ogg format.
- Click on any format to save the music, and you will be asked for the file name of the music recording.
- **Note:** Audacity does not export MP3 files directly; you should download the LAME MP3 encoder. A link to find LAME MP3 can be found at <http://audacity.sourceforge.net>



If do not see the sound wave on the interface, when recording, please adjust the line in volume as follows:

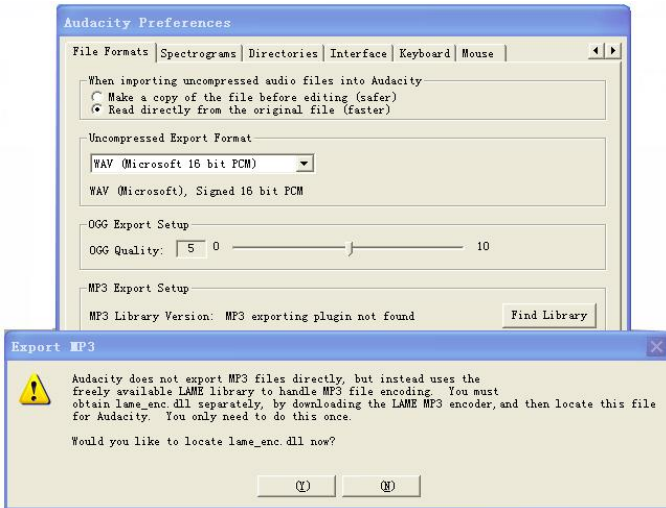
Specific Steps as follows:

- 1) Download “lame\_enc.dll” file, and install it to the software list.
- 2) Open the “Audacity” software, click Main Menu, Select “edit”, “Parameter”, “File Formats”, and click the “Searcher”.

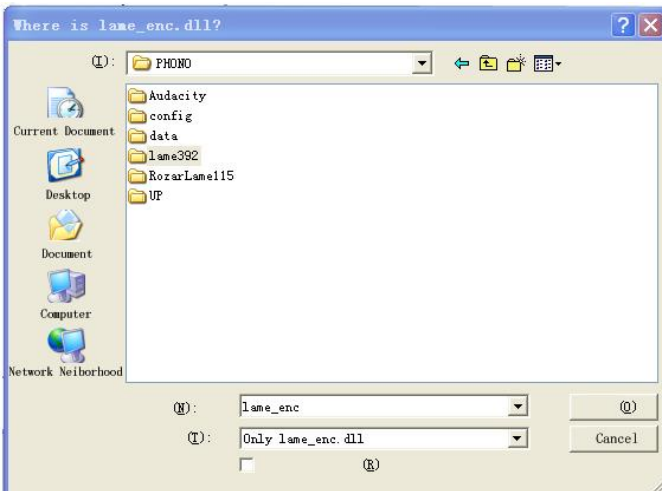


- 3) After opened, it will come to the following menu, click “YES” to go to

“Lame\_enc.dll”, and find the file’s location.



- 4) After you find the “lame\_enc.dll” file, open it and click “Y” to finish the installation.



## Maintenance and Cleaning

Your turntable requires little of no regular maintenance. Remove dust with a slightly damp antistatic cloth. Never use a dry cloth, this will create static electricity and attract more dust! Antistatic cleaning agents are available at specialist stores, but must be applied sparingly to avoid damage to rubber parts. It is recommended to install the needle cover before cleaning or maintenance is carried out to avoid damage.

If the turntable is not used over a long period of time, the drive belt should be removed to prevent unequal stretching.

NOTE: Always disconnect the record player from the power supply as a precaution before maintenance!

### Useful Tips

The turntable should be positioned on a low-resonance surface such as wood or multiple layer ply board to avoid structural vibrations disturbing playback.

## Cartridge Replacement

1. Before replacement, put the stylus protector back on the stylus to prevent damage to the stylus during the replacement process.
2. Carefully remove the wire leads from the original cartridge.
3. Loosen the two screws on the headshell that are securing the cartridge and then remove the original cartridge.
4. Mount the new cartridge to the headshell and tighten it lightly. Do not completely tighten the screws at this moment.
5. Connect the wire leads to the new cartridge's terminals. The wire lead color codes are as below:  
White Left channel positive (L+)  
Black Left channel negative (L-)

Red Right channel positive (R+)

Black Right channel negative (R-)

6. Adjust the cartridge's position to make sure it is precisely aligned on the headshell so that the stylus will be tracking the grooves in parallel perfectly.

To achieve this, place the included paper cartridge alignment protractor over the turntable spindle, carefully lift the tone arm and place the tip of the stylus on the points marked 130mm and 250mm respectively. Fine tune the cartridge's position on the headshell until the cartridge is perfectly in parallel with the reference lines at both points.

7. Tighten the screws completely once the perfect alignment is achieved.

NOTE: If you are unfamiliar or uncomfortable with completing this procedure, we recommend consulting with a professional to perform the installation.

### **Technical Specifications:**

Nominal Speeds	33 1/3 & 45RPM
Speed Variance	±1%
Wow and Flutter	≤0.15%
Signal to Noise	55dB
Down force Range	3.0-6.0g
Effective Tonearm Length	8.6" (218.5mm)
Overhang	0.73in
Power Consumption	5W (Max)
Outboard Power Supply	12V/500mA AC-DC
Dimensions (W x H x D)	420 x 360 x 125mm
Weight	4.8kgs

### **Technical Specifications: AT-3600L (audio-technica)**

Frequency response	20Hz-20kHz
Recommended load resistance	47kohms
Channel balance	<2.5dB
Amplifier connection	MM - input
Channel separation	>18dB
Recommended tracking force	3.5±0.5g
Output voltage	2.5mV
Weight	5g

### **Potential Incorrect Use and Fault Conditions**

These turntables are manufactured to the highest standards and undergo strict quality controls before leaving the factory. Faults that may possibly occur are not necessarily due to material or production faults but can sometimes be caused by incorrect use or unfortunate circumstances. Therefore the following list of common fault symptoms is included.

#### **The platter doesn't turn although the unit is switched on:**

- The unit is not connected to the main power supply.
- No power at the outlet.
- Drive belt is not installed or has slipped off.
- The unit automatically switched in standby mode, power OFF and ON again on the backside.

#### **No signal through one or other channel or both channels:**

- Phone input not selected at amplifier.
- Amplifier not switched on.
- Amplifier or speakers muted.
- No connection to the speakers.
- No connection between turntable and amplifier.
- Wire leads not connected the cartridge.

#### **Strong hum on phono input:**

- No ground connection from cartridge, arm, or arm cable to amplifier or ground loop.
- Turntable too close to speakers.

**Distorted or inconsistent sound from one or both channels:**

- Turntable is connected to wrong input of amplifier.
- Needle or cantilever damaged.
- Drive belt overstretched or dirty.
- Platter bearing without oil, dirty or damaged.
- Dust on stylus.
- MM/MC switch on pre-amplifier set incorrectly.

**Remark: Due to the ErP Stage 2 requirements for power saving measures, a unit which is connected to the mains power will switch itself to standby mode automatically if no music has been playing for about 20 minutes.**

**If your unit switches off regularly, this is no defect.**

Power supply adaptor

Manufacturer: BRIGHTPOWER OPTOELECTRONIC TECHNOLOGY CO., LTD

Model number: SW1200500-F

Use only the power supply listed in the user instructions

## Guarantee

Lenco offers service and warranty in accordance with the European law, which means that in case of repairs (both during and after the warranty period) you should contact your local dealer.

Important note: It is not possible to send products that need repairs to Lenco directly.

Important note: If this unit is opened or accessed by a non-official service center in any way, the warranty expires.

This device is not suitable for professional use. In case of professional use, all warranty obligations of the manufacturer will be voided.

## Disclaimer

Updates to Firmware and/or hardware components are made regularly. Therefore some of the instruction, specifications and pictures in this documentation may differ slightly from your particular situation. All items described in this guide for illustration purposes only and may not apply to particular situation. No legal right or entitlements may be obtained from the description made in this manual.

## Disposal of the Old Device



This symbol indicates that the relevant electrical product or battery should not be disposed of as general household waste in Europe. To ensure the correct waste treatment of the product and battery, please dispose them in accordance to any applicable local laws of requirement for disposal of electrical equipment or batteries. In so doing, you will help to conserve natural resources and improve standards of environmental protection in treatment and disposal of electrical waste (Waste Electrical and Electronic Equipment Directive).

## CE Marking



Products with the CE marking comply with the EMC Directive (2014/30/EU) and the Low Voltage Directive (2014/35/EU) issued by the Commission of the European Community.

Hereby, Lenco Benelux BV, Thermiekstraat 1a, 6361 HB Nuth, The Netherlands, declares that this product is in compliance with the essential requirements.

The declaration of conformity may be consulted at [techdoc@lenco.com](mailto:techdoc@lenco.com)

## Service

For more information and helpdesk support, please visit [www.lenco.com](http://www.lenco.com)

Lenco Benelux BV, Thermiekstraat 1a, 6361 HB Nuth, The Netherlands.



## **FCC STATEMENT**

- 1. This device complies with Part 15 of the FCC Rules.  
Operation is subject to the following two conditions:  
(1) This device may not cause harmful interference, and  
(2) This device must accept any interference received, including interference that may cause undesired operation.**
- 2. Changes or modifications not expressly approved by the party responsible for compliance could void the user's authority to operate the equipment.**

### **FCC Radiation Exposure Statement:**

**This equipment complies with FCC radiation exposure limits set forth for an uncontrolled environment. In order to avoid the possibility of exceeding the FCC radio frequency exposure limits, Human proximity to the antenna shall not be less than 20cm (8 inches) during normal operation.**

**NOTE: This equipment has been tested and found to comply with the limits for a Class B digital, pursuant to Part 15 of the FCC Rules. These limits are designed to provide reasonable protection against harmful interference in a residential installation. This equipment generates, uses and can radiate radio frequency energy and, if not installed and used in accordance with the instructions, may cause harmful interference to radio communications. However, there is no guarantee that interference will not occur in a particular installation. If the equipment does cause harmful interference to radio or television reception, which can be determined by turning the equipment off and on, the user is encouraged to try to correct the interference by one or more of the following measures:**

- Reorient or relocate the receiving antenna.**
- Increase the separation between the equipment and receiver.**
- Connect the equipment into an outlet on a circuit different from that to which the receiver is connected.**
- Consult the dealer or an experienced radio/ TV technician for help.**