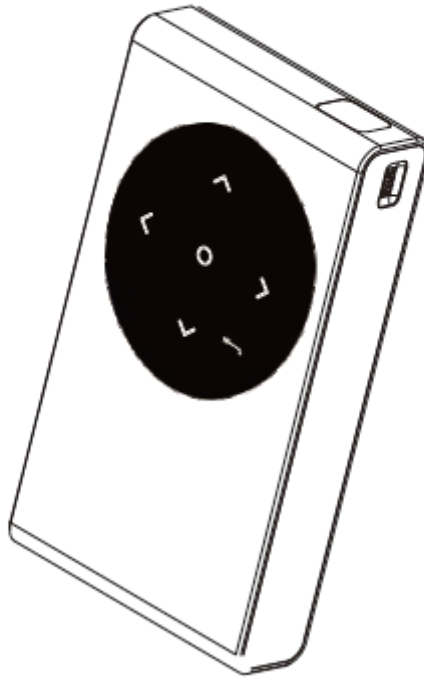
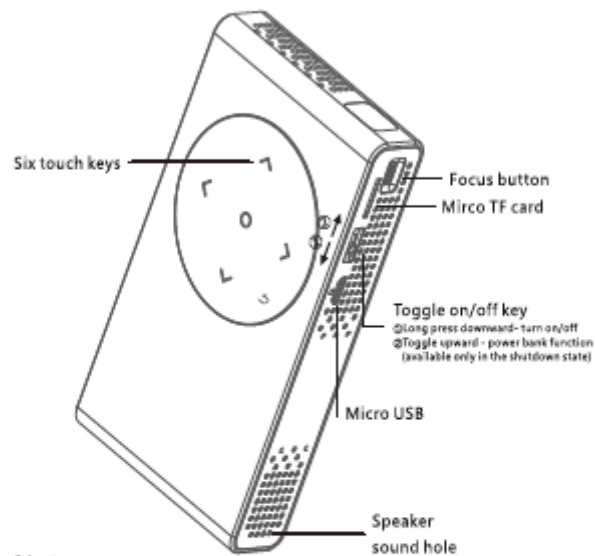


M6 | User Manual



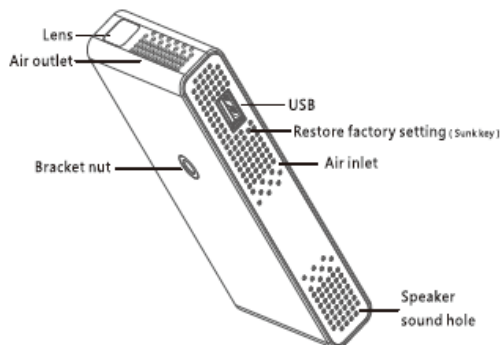
Appearance Design and Functions



Note:

- <: Option key
- >: Option key
- ^: Up/Volume+
- v: Down/Volume-
- ⏻: Return key
- ⏻: Enter Key/Pause Key/Play Key

Appearance Design and Functions



Packing list

M6 pico projector*1 power adapter*1 USB cable*1 flannelette bag*1 User manual*1

Product Function Introduction



IOS/Mac

Your iPhone/ipad/Mac and other Apple products can be connected through wireless connection so that the screen can be displayed on the projection. iPhone/ipad supports ios8.0 and above. Mac supports post-2013 versions and OS X Mountain.

Android

Android 4.3 or above version laptop, smart phone and tablet computer can have their images synchronously displayed on the projection through wireless connection.

USB Connection

You can connect your phone to M6 through USB cable and display pictures on projector.(Please Note:Enter this module and then connect mobile phone and projector by USB cable.)

Product Function Introduction

DLNA

DLNA can push media such as movies, music, pictures on your smart Android device to the projector for play and display. The push process can work in the background without affecting other use of the mobile terminal.

WIFI Networking

Since the projector itself cannot access the Internet, it is necessary to use this function to mount your projector on an available network.

Settings

You can enter the settings page to adjust projector brightness, set the network settings, upgrade online and check the version number.

Local Storage

Audio, video and pictures on TF card or U disk can be played.

Friendly Reminder: In order to save power, the device will automatically shut down after 10 minutes in the main interface.

Start Using

You can project contents on your mobile device with M6 anytime anywhere and share them with others. Please follow the connection instructions on the standby page to operate your projector. M6 SSID and the connected WiFi hotspot name are displayed in the upper right corner of the standby page.

Play M6 Around with my Smart Device

The universal DLNA protocol projection screen (applicable to Android, Windows and Apple devices).

- If your device and M6 are connected to the same WiFi hotspot or M6 has been connected to a WiFi hotspot and your smart device directly connects to M6's WiFi hotspot, the online video resources will be projected through M6. For a third-party video App that supports the DLNA protocol, a DLNA projection screen icon or the similar icon prompt will appear on the page. Click on this icon and select M6, you can transfer the video resource address of the video App to M6 through the DLNA protocol. After M6 receives the address, the video will be decoded, played and projected. The actual projection effect is related to the third-party video App.

- For details, please refer to the connection guide in the corresponding icons or the following graphic operation demonstration.

Start Using

As some mobile phones come without this function, it is needed to install APP, such as Bubble UPnP.

Bubble UPnP usage instructions:

- Mobile Phone Settings --- wifi --- Connect to the Projector Hotspot
- Bubble UPnP --- Now Playing --- Local Renderer --- Select the Projector Device
- Now Playing --- Local Renderer --- Media --- Select the Media File to Play
- Click on the Play Button on the bottom to Start to Play

Apple device is projected through the Airplay protocol (applicable to iOS7 and OS X 10.8.5 and above devices)

- If you will project online video resources through M6, please make sure that your M6 and smart device have already been connected to the same WiFi hotspot or M6 has been connected to a WiFi hotspot and *your Apple device is connected directly to M6 WiFi hotspot.
- For details, please refer to the connection guide in the corresponding icons or the following graphic operation demonstration.

Start Using

Android/Windows

Android and Win 8.1 above Device Mirror Screen Projection

- If your smart device supports the Miracast protocol, please click the Android icon on M6 standby main page and follow the connection prompt to complete the connection between your device and M6 mirror. If you are not sure whether your device supports Miracast and how to operate screen mirroring, please consult your smart device manufacturer.
- With this connection mode, M6 completely projects the screen information on your smart device. Your smart device can connect to WIFI or use mobile data. You can push contents on the screen to M6 to be synchronously displayed while you are playing online videos or other information after successful connection of your smart device.
- Actual using effect depends on the performance of your device.

Two ways for M6 connect to WIFI:

- In the standby interface, enter WIFI connection and chose the known network to connect. After the success of WIFI connection, the connected routing name will be displayed in the upper right corner of the screen.

Start Using

If you want to connect a new WIFI hotspot, after entering the WIFI networking module, M6 will take 30 seconds to search the previously connected WIFI. After then the hotspot of M6 will be re-opened to wait for connecting.

- Enter the Settings - Web network connection, according to the interface prompts to connect M6 to WIFI by smart device.

Restore M6 Factory Settings

Long press the Reset button on M6 for about 5 seconds until the page with the prompt to restore the factory settings appears. M6 password and connected WiFi hotspot information will be reset and restored to factory settings. M6 initial password is empty.

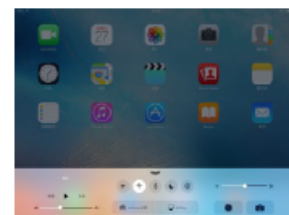
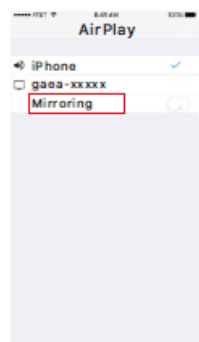
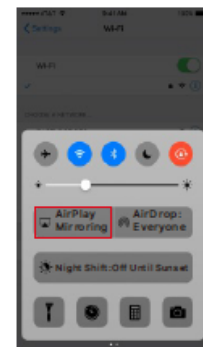
Online Upgrading of M6

In the M6 setting interface, click on the online upgrade menu to search and download the latest software when M6 is connecting internet.

* In the entire upgrading process of the pico projector, ensure that the pico projector is in the state of charging or has enough power to support the upgrading operation. After download finished, the product will be installed and restarted automatically.

Functional Operation Demonstration

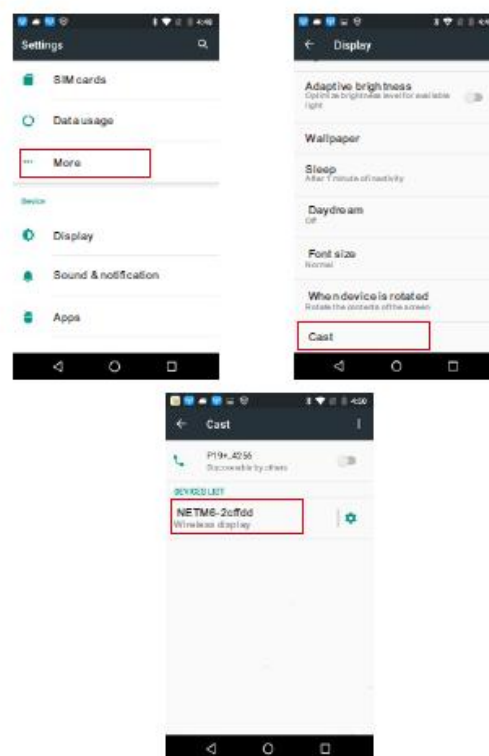
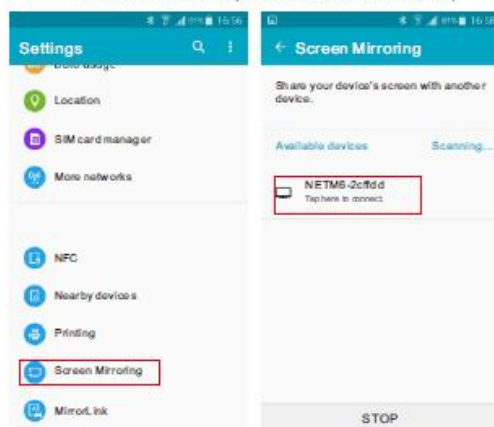
A. iOS/Mac



Functional Operation Demonstration

B. Android

(Note: The names of this function on different brands of mobile phone are not the same.)



Formats Supported by Local-storage

Audio	*.mp3	*.wma	*.wav
Video	*.avi	*.mp4	*.mpge
	*.flv	*.mpg	*.mkv
	*.mov	*.3gp	*.vob
Pictures	*.jpg	*.png	

FCC Statement

This device complies with part 15 of the FCC rules. Operation is subject to the following two conditions: (1) this device may not cause harmful interference, and (2) this device must accept any interference received, including interference that may cause undesired operation.

Caution: Changes or modifications not expressly approved by the party responsible for compliance could void the user's authority to operate the equipment.

NOTE: This equipment has been tested and found to comply with the limits for a Class B digital device, pursuant to part 15 of the FCC Rules. These limits are designed to provide reasonable protection against harmful interference in a residential installation. This equipment generates and can radiate radio frequency energy and, if not installed and used in accordance with the instructions, may cause harmful interference to radio communications. However, there is no guarantee that interference will not occur in a particular installation. If this equipment does cause harmful interference to radio or television reception, which can be determined by turning the equipment off and on, the user is encouraged to try to correct the interference by one or more of the following measures:

- Reorient or relocate the receiving antenna.
- Increase the separation between the equipment and receiver.
- Connect the equipment into an outlet on a circuit different from that to which the receiver is connected.
- Consult the dealer or an experienced radio/TV technician for help important announcement

Radiation Exposure Statement

The device has been evaluated to meet general RF exposure requirement. The device can be used in portable exposure condition without restriction.