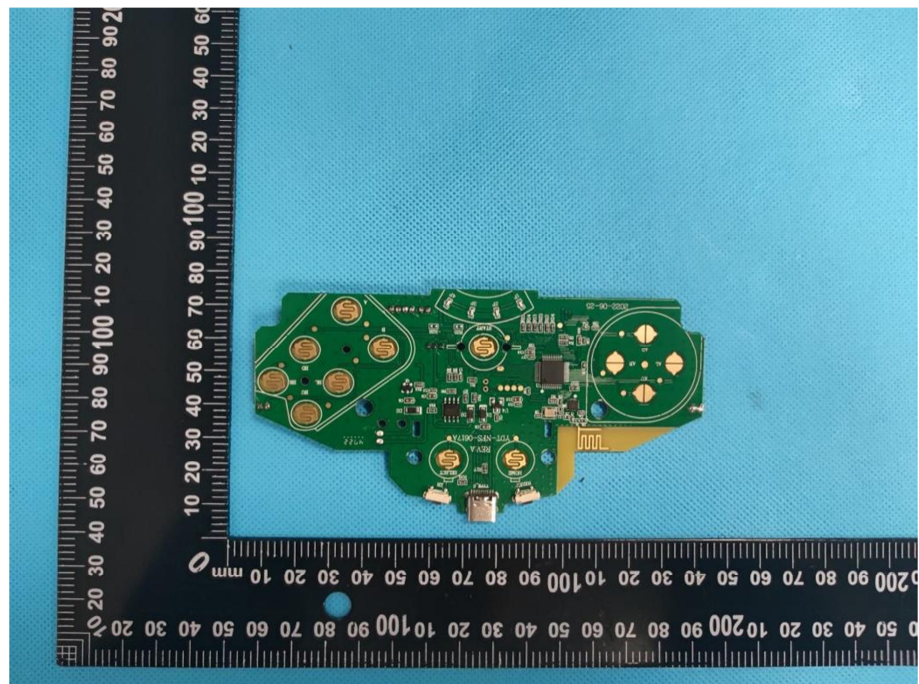


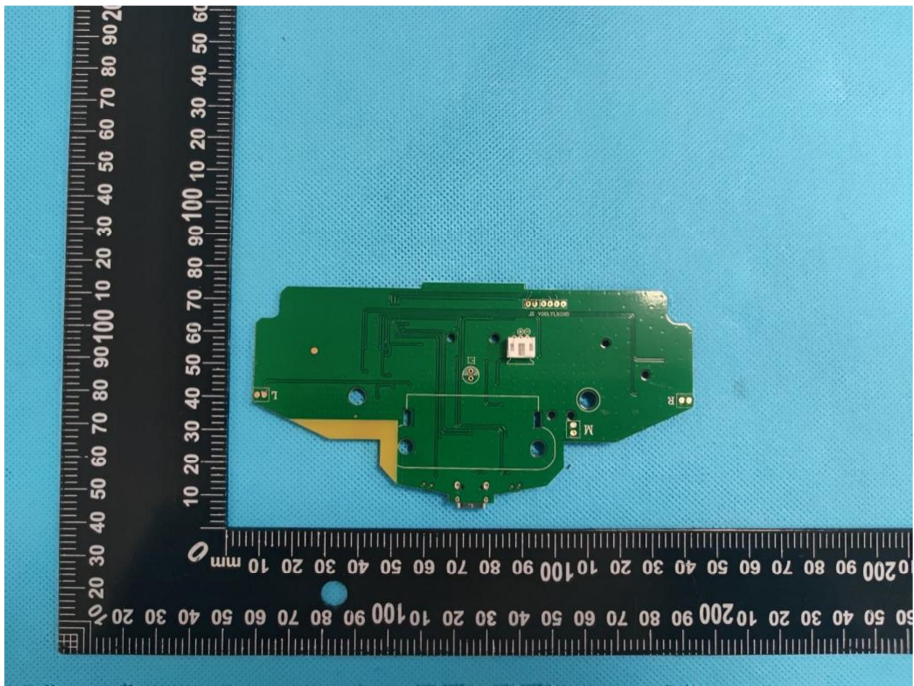
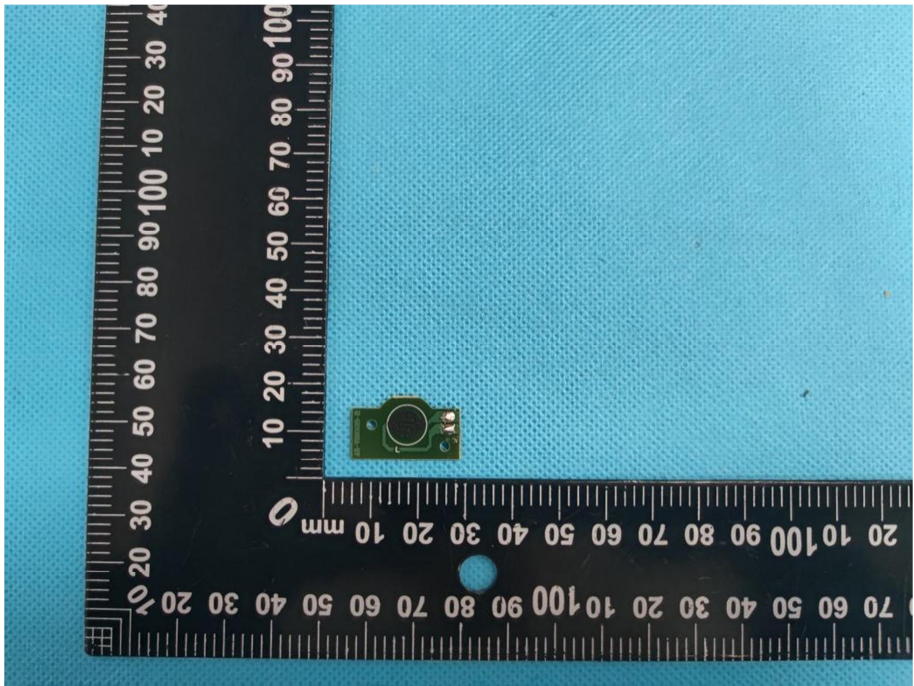
### EXHIBIT 3 - EUT INTERNAL PHOTOGRAPHS

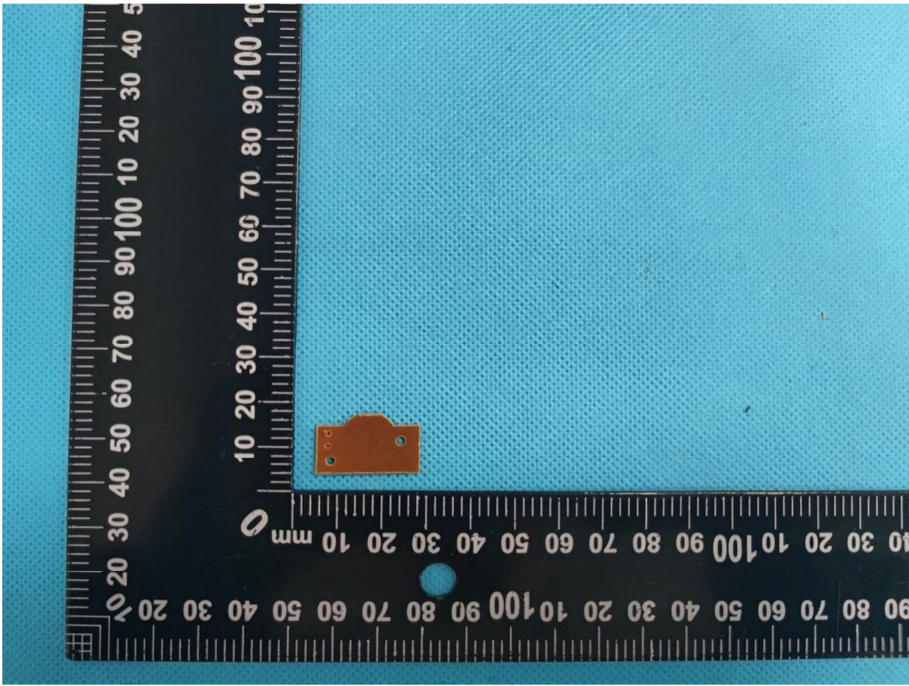
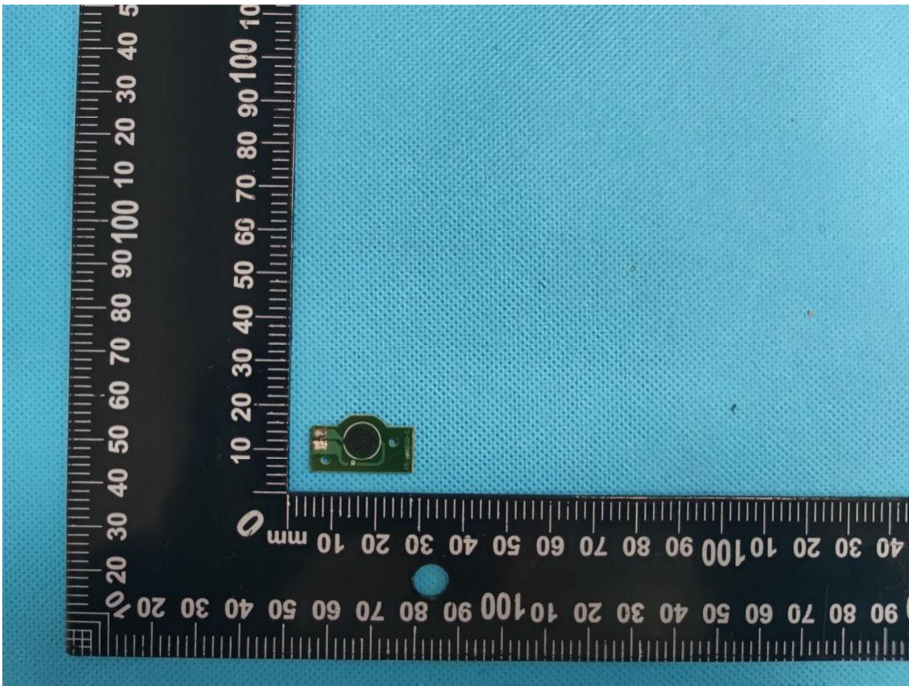
**EUT Housing and Board View 1**

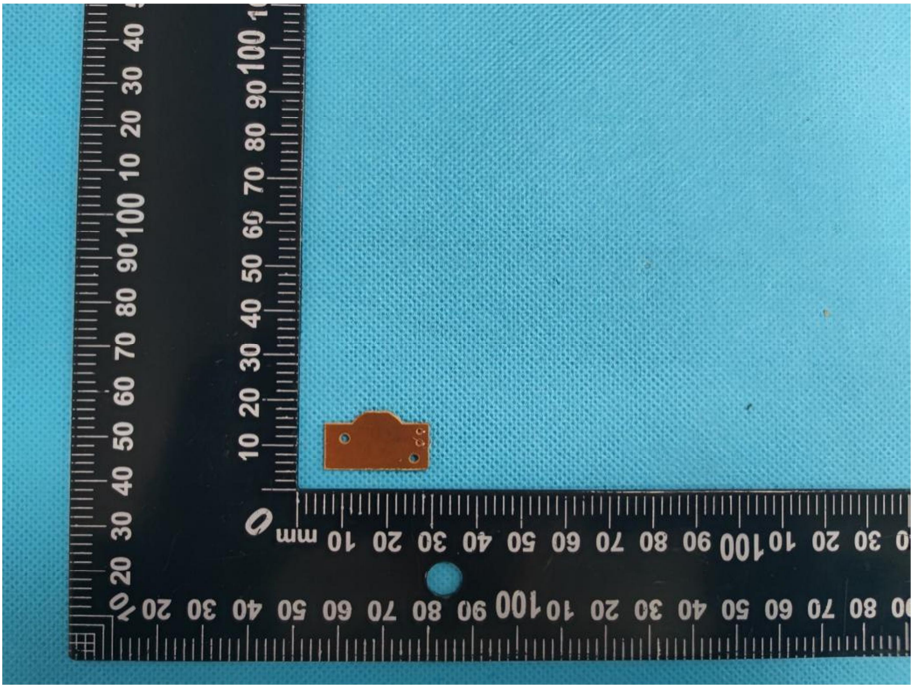
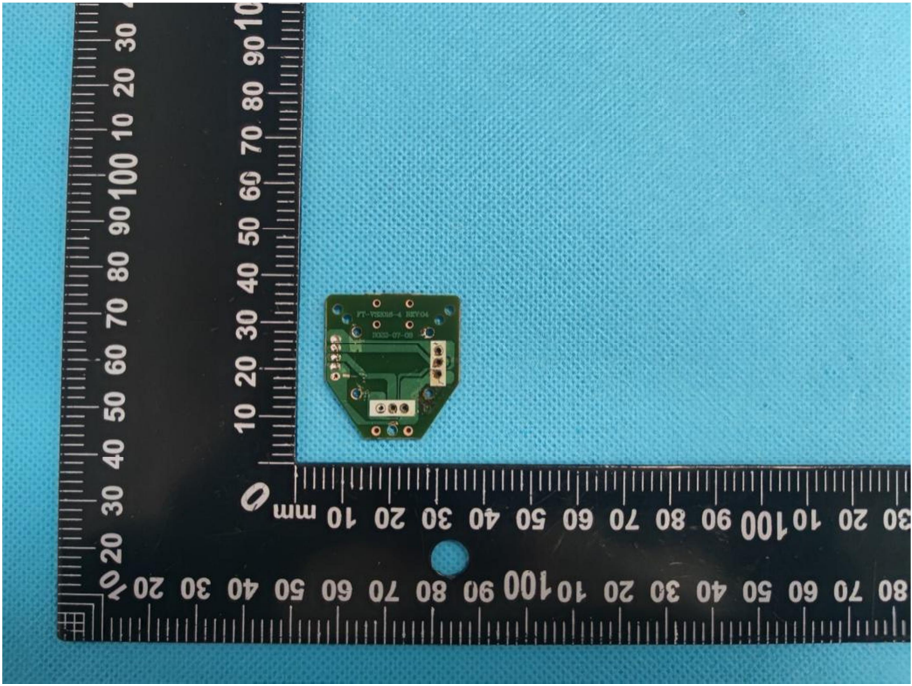


**Solder Board-Component View 1**

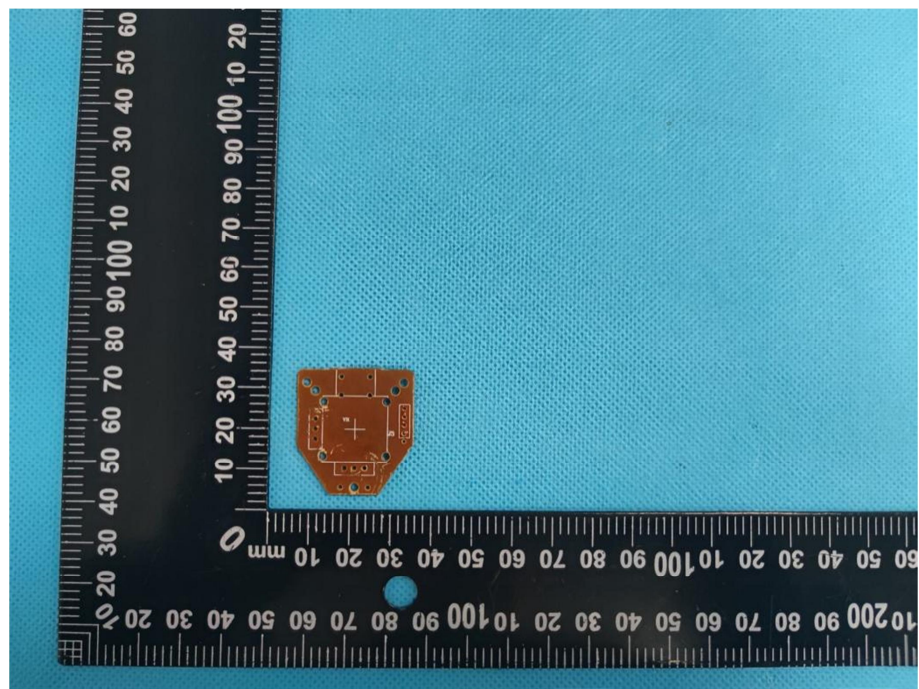


<p><b>Solder Board-Component View 2</b></p>	 A photograph of a green printed circuit board (PCB) component, likely a camera module, placed on a blue textured surface. The component is irregularly shaped with various solder points and a central lens area. A black L-shaped ruler is positioned to the left and bottom of the component for scale. The ruler shows measurements in millimeters, with the vertical scale ranging from 0 to 100 mm and the horizontal scale from 0 to 200 mm.
<p><b>Solder Board-Component View 3</b></p>	 A photograph showing a different view of the same green PCB component. This view highlights a circular lens or sensor area. The component is placed on the same blue textured surface. A black L-shaped ruler is used for scale, with the vertical scale from 0 to 100 mm and the horizontal scale from 0 to 200 mm.

<p><b>Solder Board-Component View 4</b></p>	 A photograph of a small, rectangular, copper-colored solder board component. The component is positioned on a blue textured surface. To its left is a vertical ruler with markings from 0 to 100 mm. Below the component is a horizontal ruler with markings from 0 to 100 mm. The component has a small notch on its top edge and two small circular features on its bottom edge.
<p><b>Solder Board-Component View 5</b></p>	 A photograph of a small, rectangular, green solder board component. The component is positioned on a blue textured surface. To its left is a vertical ruler with markings from 0 to 100 mm. Below the component is a horizontal ruler with markings from 0 to 100 mm. The component has a circular feature on its top edge and two small circular features on its bottom edge.

<p><b>Solder Board-Component View 6</b></p>	 <p>A photograph of a small, rectangular, copper-colored solder board component. The component is positioned on a blue textured surface. A black L-shaped ruler is placed next to it for scale, with markings in millimeters. The component is located approximately at the 10 mm mark on the vertical ruler and the 30 mm mark on the horizontal ruler.</p>
<p><b>Solder Board-Component View 7</b></p>	 <p>A photograph of a green solder board component. The component is positioned on a blue textured surface. A black L-shaped ruler is placed next to it for scale, with markings in millimeters. The component is located approximately at the 10 mm mark on the vertical ruler and the 30 mm mark on the horizontal ruler. The component has several small components and markings on its surface, including "PT-10000-1" and "SMT-10000-1".</p>

**Solder  
Board-Component  
View 8**



**Solder  
Board-Component  
View 9**

