

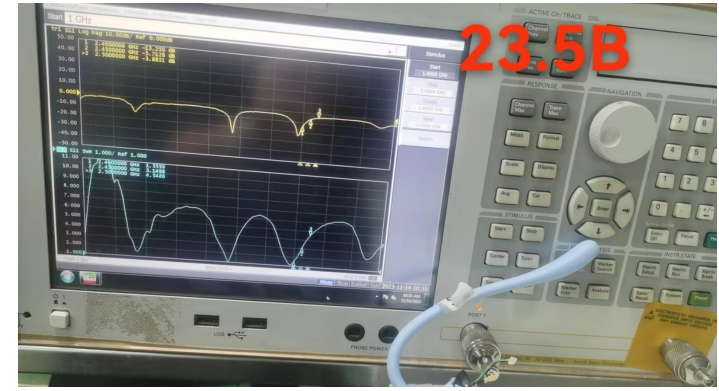
Antenna Test Report (Passive-BW)

23.5B

Date: **11/14/23**

Comments:
This antenna is good. Yeah!

Test Point ID	Freq. (MHz)	TRP (dBm)	Gain (dBi)	Directivity (dBi)	Efficiency (%)	Efficiency (dB)	Max (dBm)	Theta of Max	Phi of Max	Min (dBm)	Theta of Min	Phi of Min	AVG (dBm)	Max/Min (dB)	Max/AVG (dB)	Min/AVG (dB)
1	2400.0	2400.00	2.59	6.91	37.0%	-4.32	2.59	180	90	-16.32	90	0	-3.55	18.90	6.14	-12.76
2	2450.0	2450.00	2.20	7.22	31.5%	-5.02	2.20	180	90	-14.95	90	0	-3.99	17.15	6.19	-10.96
3	2500.0	2500.00	0.51	7.66	19.3%	-7.15	0.51	180	120	-18.27	90	0	-5.72	18.78	6.23	-12.55
4	-	-	-	-	-	-	-	-	-	-	-	-	-	-	-	-
5	-	-	-	-	-	-	-	-	-	-	-	-	-	-	-	-
6	-	-	-	-	-	-	-	-	-	-	-	-	-	-	-	-
7	-	-	-	-	-	-	-	-	-	-	-	-	-	-	-	-
8	-	-	-	-	-	-	-	-	-	-	-	-	-	-	-	-
9	-	-	-	-	-	-	-	-	-	-	-	-	-	-	-	-
10	-	-	-	-	-	-	-	-	-	-	-	-	-	-	-	-
11	-	-	-	-	-	-	-	-	-	-	-	-	-	-	-	-
12	-	-	-	-	-	-	-	-	-	-	-	-	-	-	-	-
13	-	-	-	-	-	-	-	-	-	-	-	-	-	-	-	-
14	-	-	-	-	-	-	-	-	-	-	-	-	-	-	-	-
15	-	-	-	-	-	-	-	-	-	-	-	-	-	-	-	-
16	-	-	-	-	-	-	-	-	-	-	-	-	-	-	-	-
17	-	-	-	-	-	-	-	-	-	-	-	-	-	-	-	-
18	-	-	-	-	-	-	-	-	-	-	-	-	-	-	-	-
19	-	-	-	-	-	-	-	-	-	-	-	-	-	-	-	-
20	-	-	-	-	-	-	-	-	-	-	-	-	-	-	-	-
21	-	-	-	-	-	-	-	-	-	-	-	-	-	-	-	-
22	-	-	-	-	-	-	-	-	-	-	-	-	-	-	-	-
23	-	-	-	-	-	-	-	-	-	-	-	-	-	-	-	-
24	-	-	-	-	-	-	-	-	-	-	-	-	-	-	-	-
25	-	-	-	-	-	-	-	-	-	-	-	-	-	-	-	-
26	-	-	-	-	-	-	-	-	-	-	-	-	-	-	-	-
27	-	-	-	-	-	-	-	-	-	-	-	-	-	-	-	-
28	-	-	-	-	-	-	-	-	-	-	-	-	-	-	-	-
29	-	-	-	-	-	-	-	-	-	-	-	-	-	-	-	-
30	-	-	-	-	-	-	-	-	-	-	-	-	-	-	-	-
31	-	-	-	-	-	-	-	-	-	-	-	-	-	-	-	-
32	-	-	-	-	-	-	-	-	-	-	-	-	-	-	-	-



[Go to Cover Page](#)

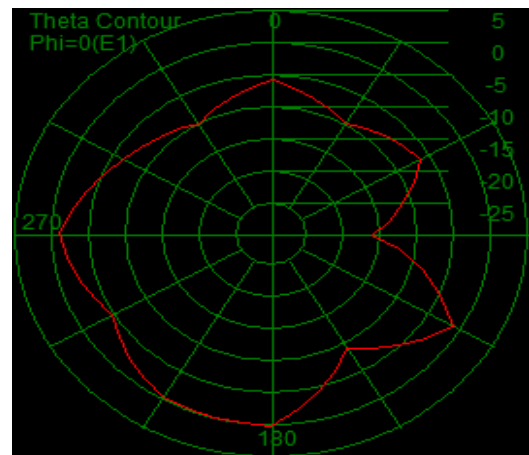
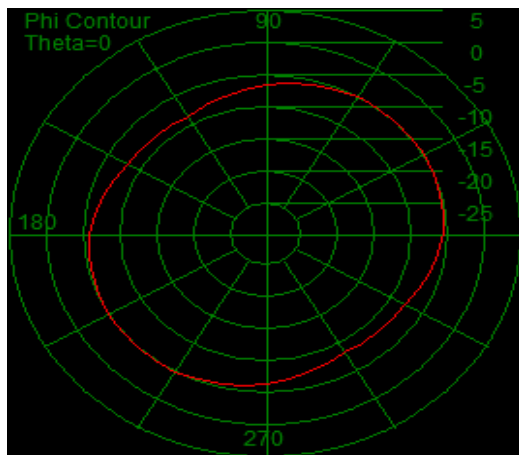
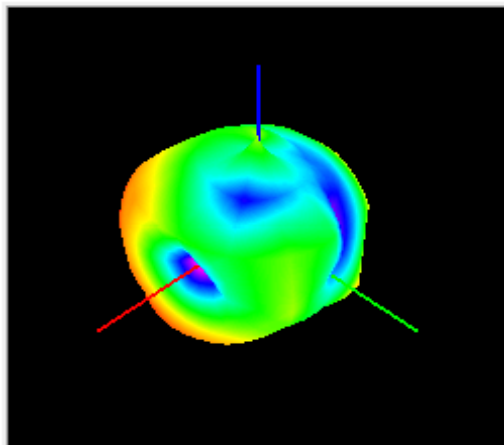
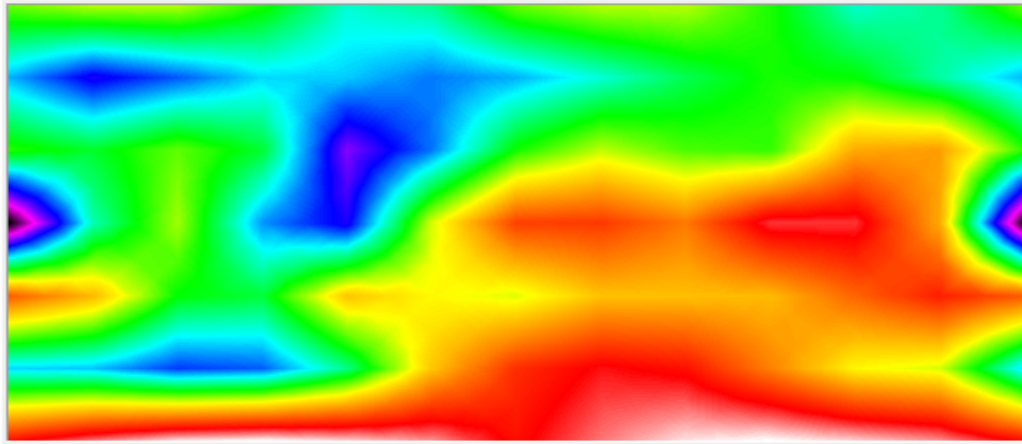
Passive -Freq2400.00MHZ

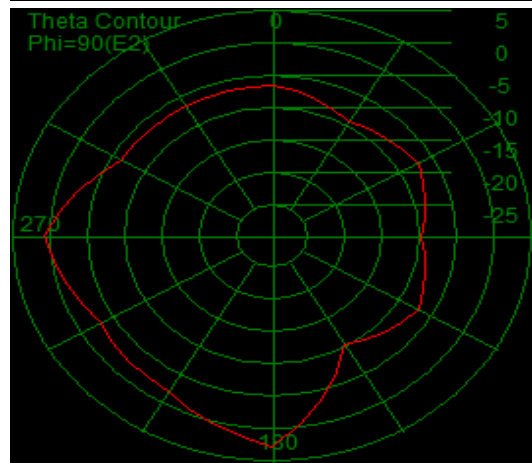
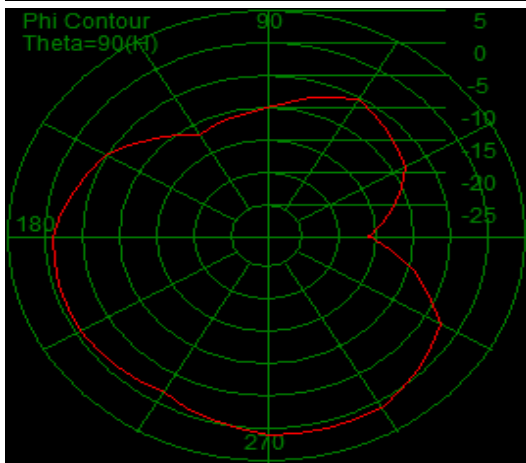
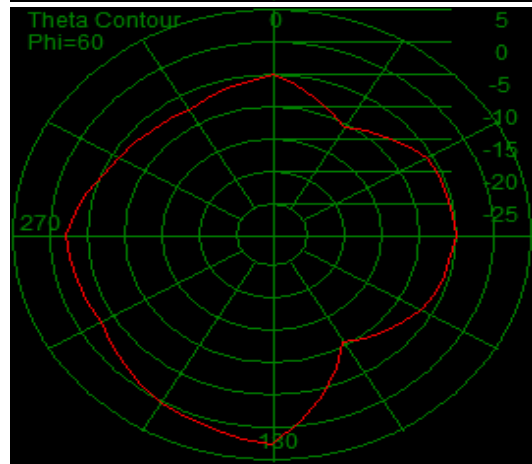
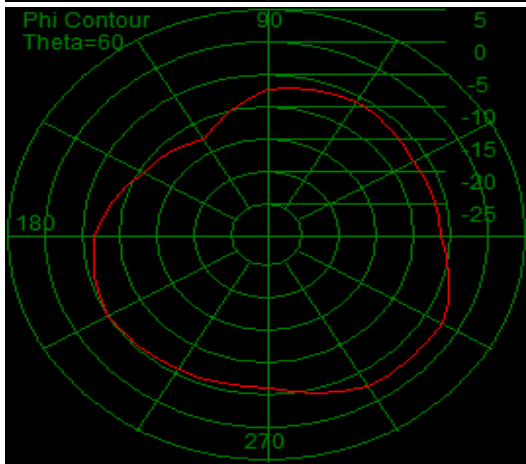
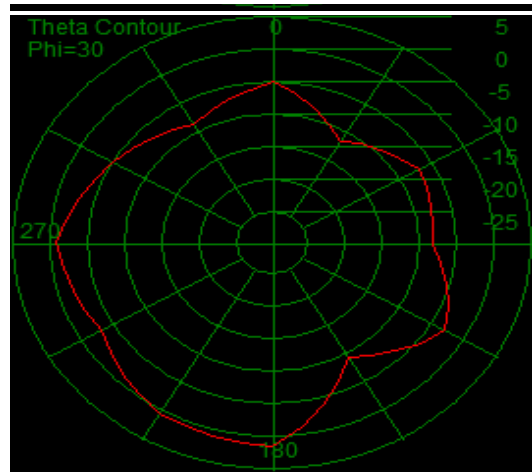
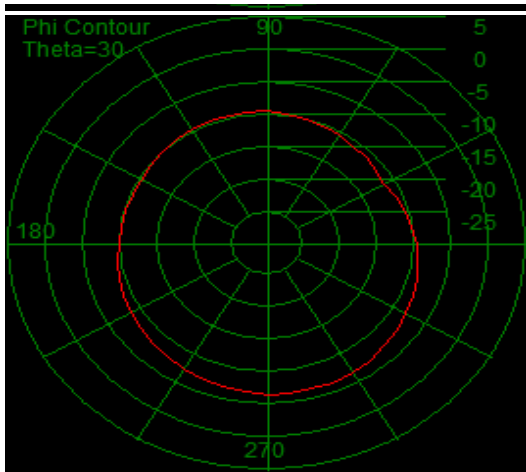
		0	30	60	90	120	150	180	210	240	270	300	330	360
H+V Total (30° Step)	0	-5.87	-5.13	-5.15	-6.62	-8.77	-8.18	--	--	--	--	--	--	--
	30	-9.87	-11.83	-10.76	-9.54	-9.68	-10.47	-9.94	-8.85	-7.61	-6.66	-6.88	-8.39	--
	60	-6.53	-7.24	-5.97	-7.32	-12.83	-10.49	-6.73	-5.13	-6.20	-6.40	-2.96	-2.71	--
	90	-16.32	-8.48	-5.38	-10.17	-11.82	-4.88	-1.02	-0.87	-2.06	0.66	0.66	-2.96	--
	120	-1.46	-3.19	-6.90	-7.38	-3.44	-4.42	-4.80	-3.40	-3.36	-3.25	-1.67	-0.33	--
	150	-9.56	-9.75	-11.05	-10.73	-8.10	-3.49	-0.64	0.35	-0.09	-2.20	-4.39	-4.86	--
	180	-0.05	1.30	2.31	2.59	2.13	1.55	--	--	--	--	--	--	--

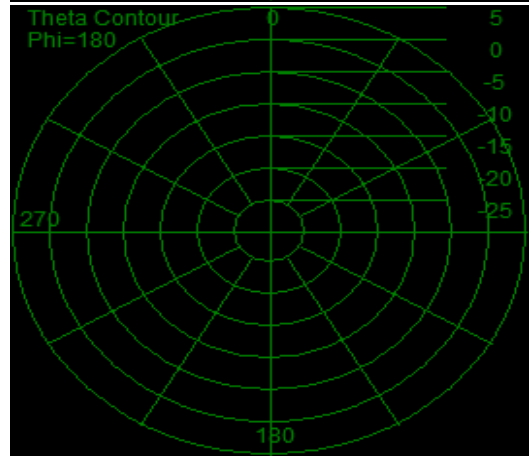
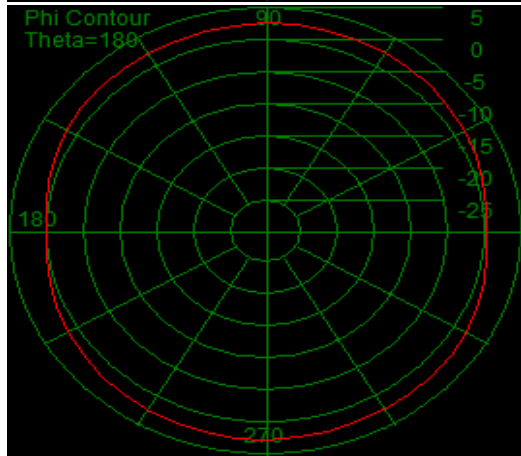
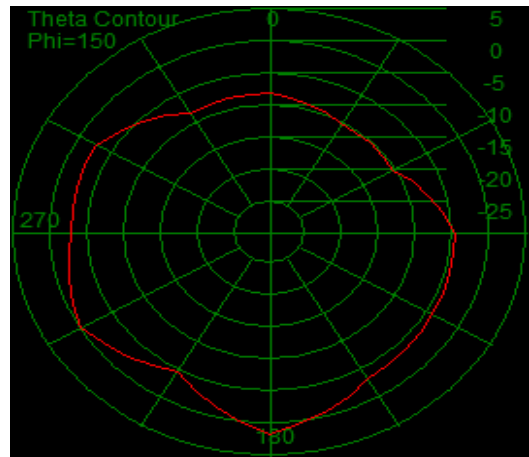
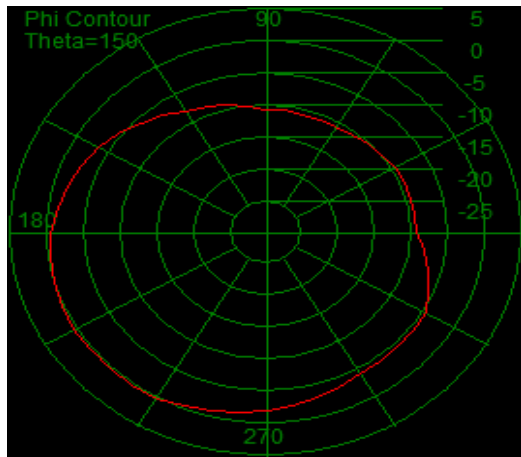
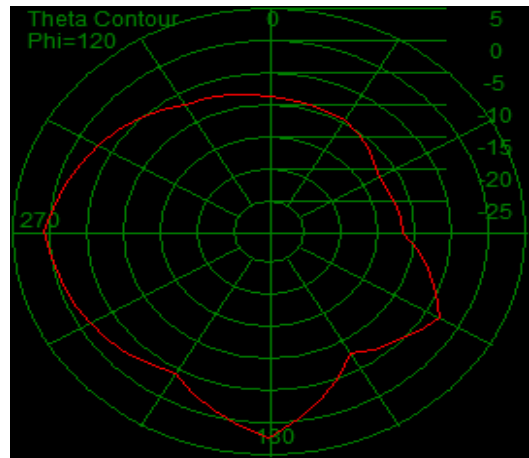
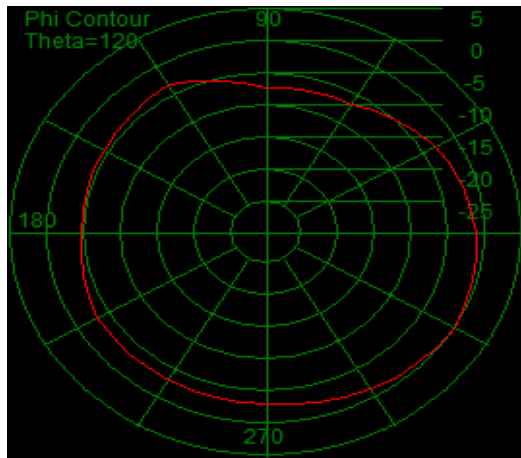
		0	30	60	90	120	150	180	210	240	270	300	330	360
H (30° Step)	0	-5.98	-5.74	-8.11	-15.24	-19.56	-10.33	--	--	--	--	--	--	--
	30	-11.94	-14.07	-13.01	-10.66	-10.50	-12.69	-12.36	-9.71	-7.64	-6.74	-7.25	-9.42	--
	60	-7.29	-8.88	-8.88	-11.07	-14.60	-10.74	-8.40	-8.14	-11.19	-15.22	-5.50	-3.81	--
	90	-19.60	-14.27	-10.06	-12.64	-13.15	-5.49	-2.08	-2.75	-3.38	0.05	-1.40	-7.53	--
	120	-1.47	-3.37	-6.92	-18.80	-7.71	-5.24	-5.20	-5.40	-6.72	-5.55	-1.95	-0.45	--
	150	-13.46	-12.09	-15.87	-29.02	-9.77	-3.57	-0.82	-0.35	-1.63	-5.25	-10.43	-10.37	--
	180	-1.31	-4.47	-14.15	-6.53	-1.16	0.85	--	--	--	--	--	--	--

		0	30	60	90	120	150	180	210	240	270	300	330	360
V (30° Step)	0	-21.86	-13.96	-8.20	-7.27	-9.15	-12.24	--	--	--	--	--	--	--
	30	-14.10	-15.77	-14.70	-15.95	-17.34	-14.45	-13.63	-16.30	-29.09	-24.39	-17.70	-15.13	--
	60	-14.48	-12.26	-9.08	-9.70	-17.58	-23.07	-11.69	-8.15	-7.85	-7.01	-6.50	-9.18	--
	90	-19.07	-9.81	-7.19	-13.79	-17.63	-13.75	-7.70	-5.41	-7.87	-8.20	-3.58	-4.83	--
	120	-28.47	-17.09	-29.85	-7.70	-5.48	-12.05	-15.38	-7.72	-6.05	-7.12	-13.70	-16.22	--
	150	-11.83	-13.53	-12.79	-10.79	-13.05	-20.97	-14.55	-7.95	-5.33	-5.18	-5.63	-6.29	--
	180	-6.05	-0.04	2.21	2.02	-0.63	-6.76	--	--	--	--	--	--	--

[Go to Cover Page](#)







[Go to Cover Page](#)

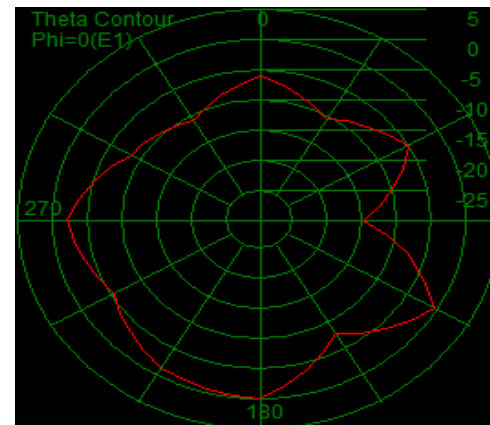
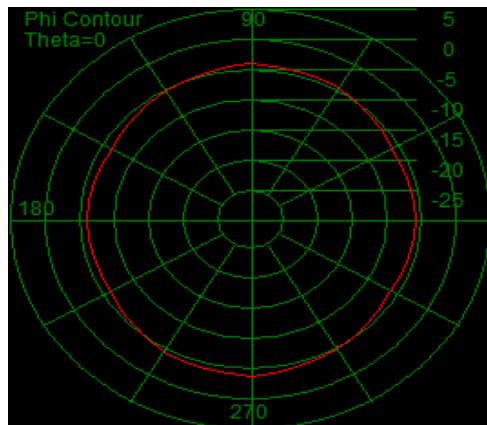
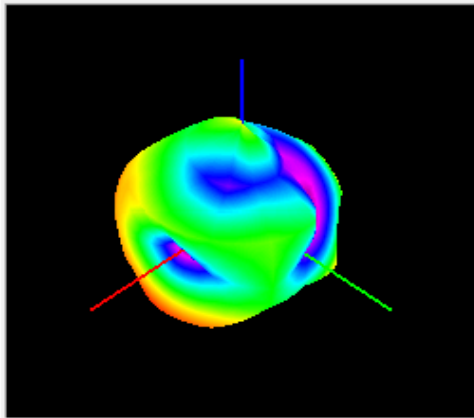
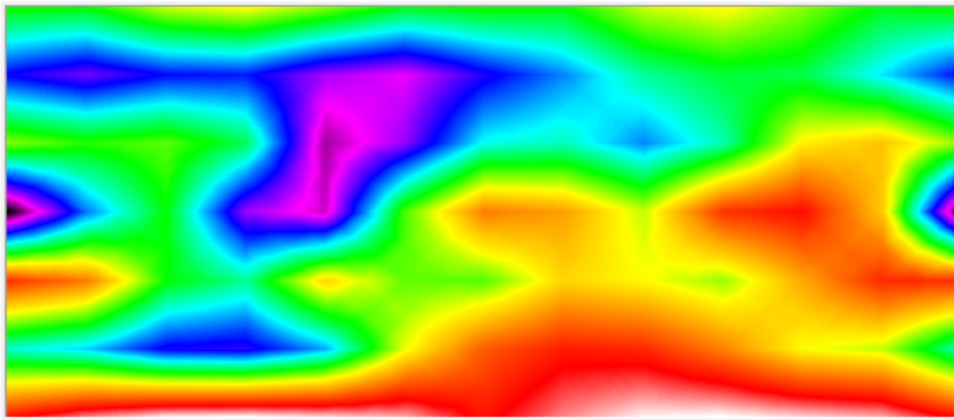
Passive -Freq2450.00MHZ

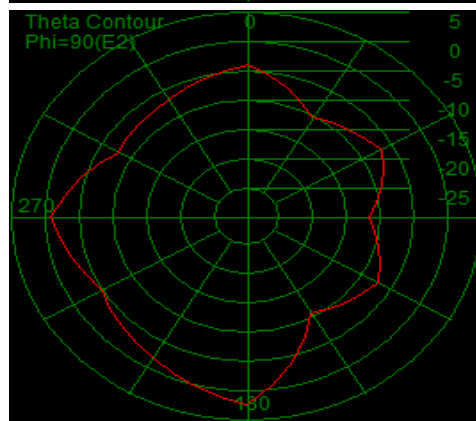
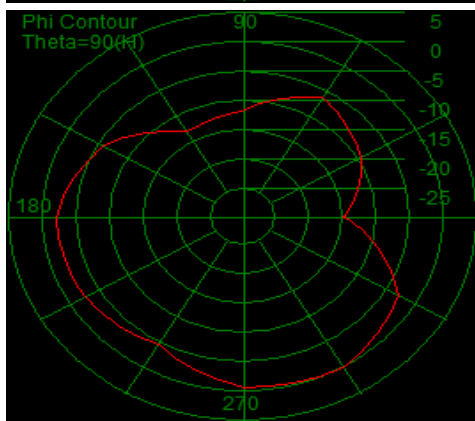
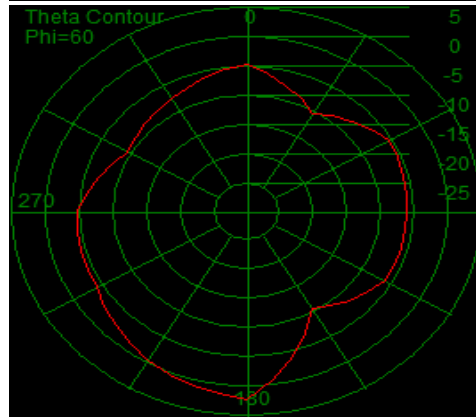
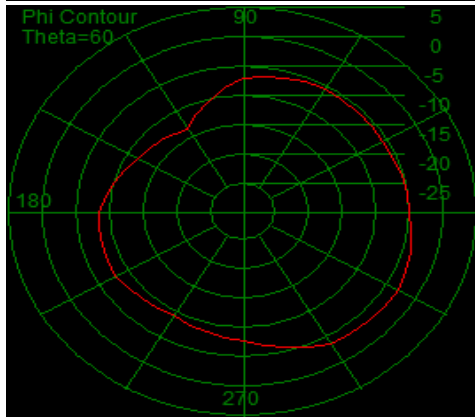
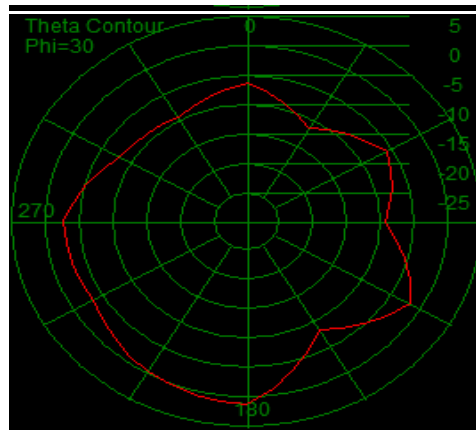
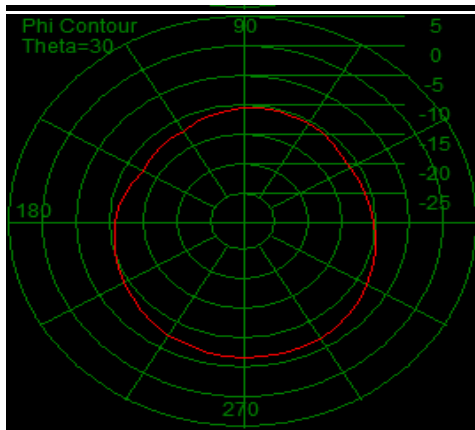
		0	30	60	90	120	150	180	210	240	270	300	330	360
H+V Total (30° Step)	0	-6.18	-6.35	-4.64	-4.09	-5.17	-6.54	--	--	--	--	--	--	--
	30	-10.70	-11.64	-10.60	-10.46	-12.05	-12.62	-10.91	-9.52	-7.68	-6.82	-6.98	-8.69	--
	60	-5.23	-6.06	-5.61	-7.05	-13.59	-11.91	-8.38	-7.97	-9.52	-7.87	-4.02	-3.24	--
	90	-14.95	-9.61	-6.41	-11.92	-13.21	-5.79	-2.12	-2.67	-4.73	-0.88	-0.20	-3.35	--
	120	-0.74	-2.00	-6.32	-7.62	-3.54	-5.58	-5.66	-3.58	-4.19	-5.09	-2.82	-0.64	--
	150	-8.09	-8.87	-10.82	-11.05	-9.23	-4.39	-1.48	-0.42	-0.62	-2.16	-4.22	-4.74	--
	180	-0.28	1.17	2.08	2.20	1.82	1.48	--	--	--	--	--	--	--

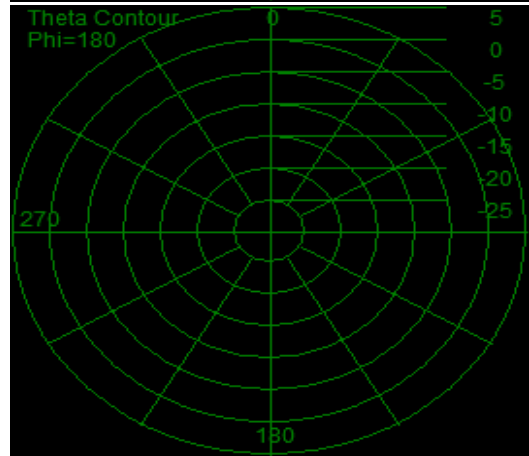
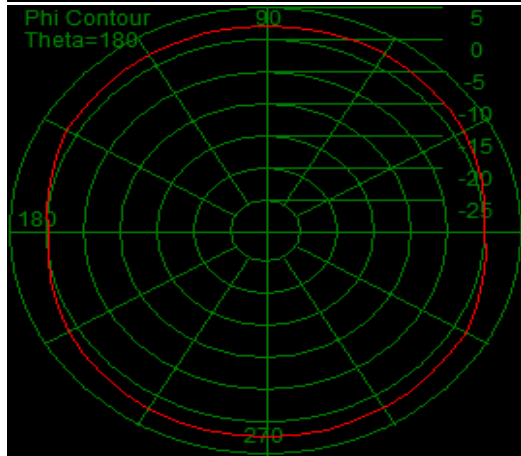
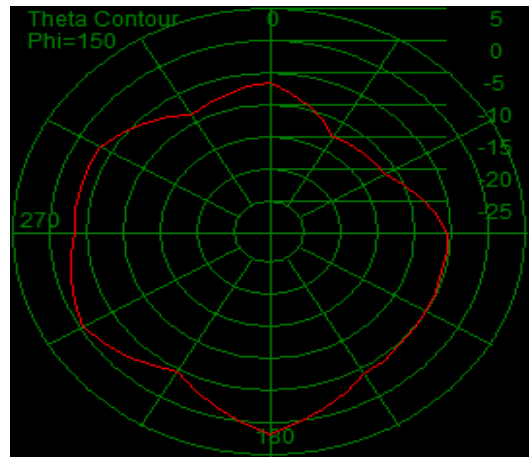
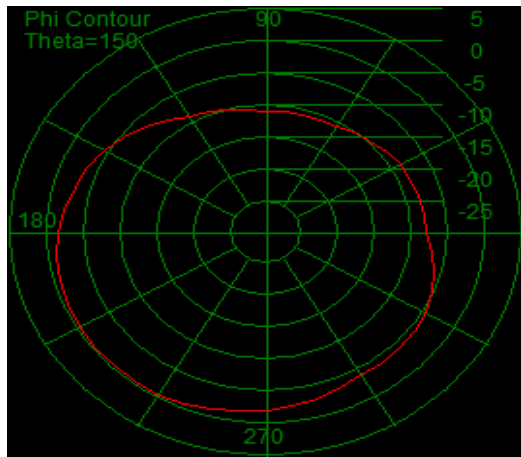
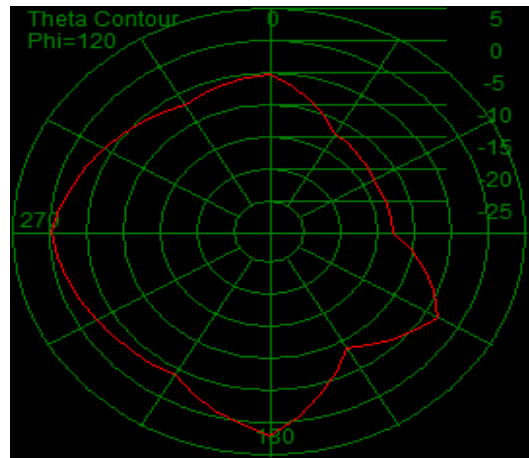
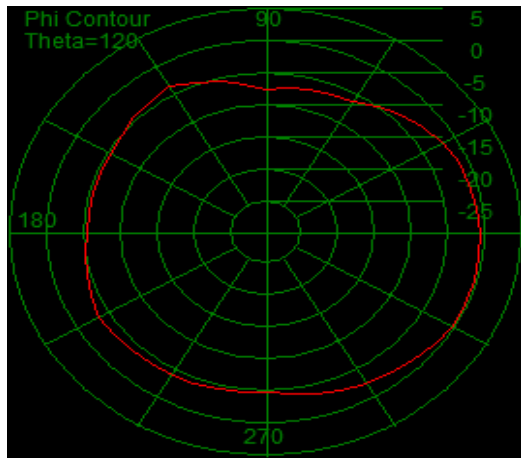
		0	30	60	90	120	150	180	210	240	270	300	330	360
H (30° Step)	0	-6.46	-7.44	-9.81	-15.79	-21.47	-10.41	--	--	--	--	--	--	--
	30	-11.55	-13.99	-13.58	-11.74	-12.87	-17.25	-15.51	-10.48	-7.69	-7.04	-7.64	-9.70	--
	60	-6.02	-7.60	-9.23	-13.67	-17.69	-12.64	-11.41	-13.12	-16.91	-12.45	-6.07	-4.42	--
	90	-16.69	-20.81	-13.14	-16.26	-15.16	-6.37	-3.22	-5.24	-6.60	-1.40	-2.06	-7.40	--
	120	-0.74	-2.17	-6.34	-21.80	-7.97	-6.80	-6.13	-5.18	-6.75	-7.59	-3.25	-0.82	--
	150	-13.20	-12.67	-17.42	-20.06	-10.73	-4.48	-1.59	-1.18	-2.24	-4.46	-8.22	-9.85	--
	180	-1.61	-4.92	-16.17	-6.23	-0.78	1.06	--	--	--	--	--	--	--

		0	30	60	90	120	150	180	210	240	270	300	330	360
V (30° Step)	0	-18.22	-12.87	-6.22	-4.39	-5.28	-8.83	--	--	--	--	--	--	--
	30	-18.21	-15.42	-13.64	-16.40	-19.70	-14.45	-12.76	-16.53	-34.34	-19.79	-15.53	-15.48	--
	60	-13.04	-11.33	-8.08	-8.11	-15.74	-20.02	-11.37	-9.56	-10.39	-9.72	-8.26	-9.47	--
	90	-19.76	-9.95	-7.44	-13.91	-17.64	-14.85	-8.64	-6.17	-9.29	-10.30	-4.77	-5.52	--
	120	-32.18	-16.26	-29.55	-7.79	-5.48	-11.68	-15.54	-8.70	-7.70	-8.68	-13.03	-14.55	--
	150	-9.70	-11.21	-11.89	-11.64	-14.58	-21.48	-17.64	-8.37	-5.69	-6.02	-6.42	-6.34	--
	180	-6.08	-0.06	2.01	1.52	-1.65	-8.86	--	--	--	--	--	--	--

[Go to Cover Page](#)







[Go to Cover Page](#)

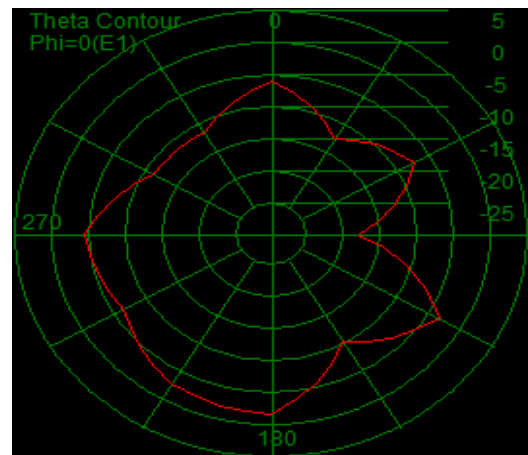
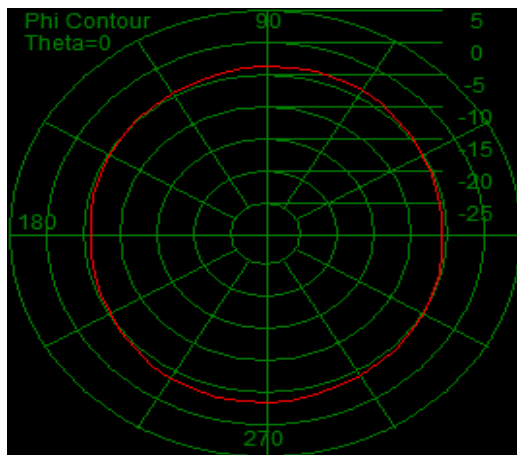
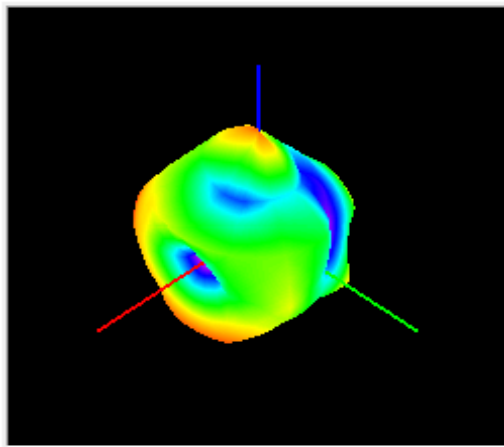
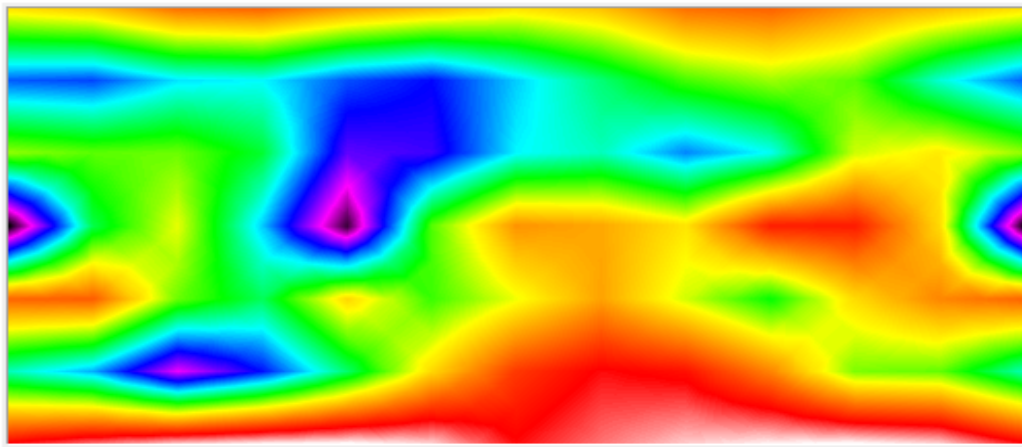
Passive -Freq2500.00MHZ

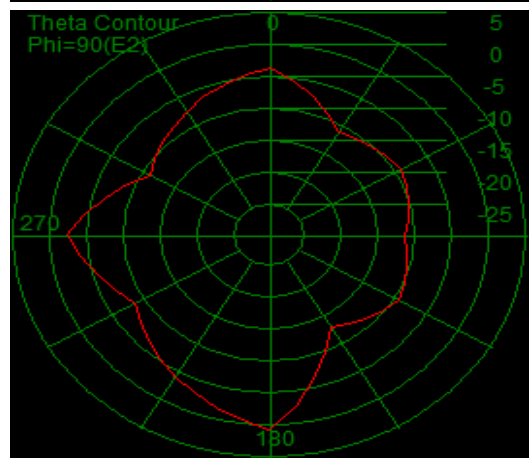
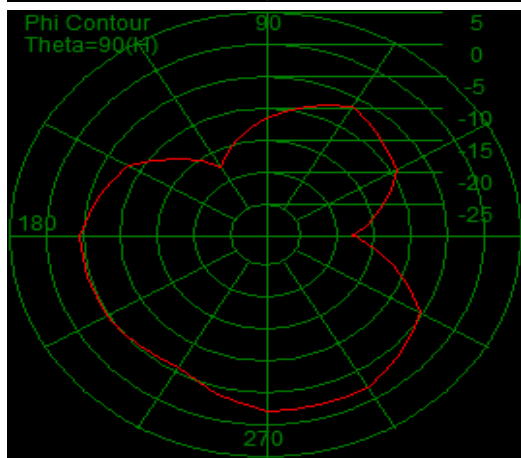
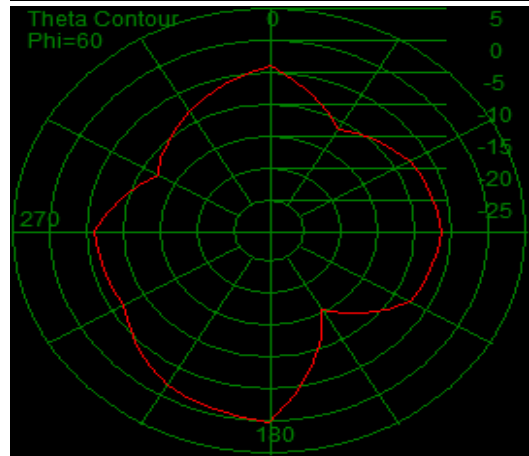
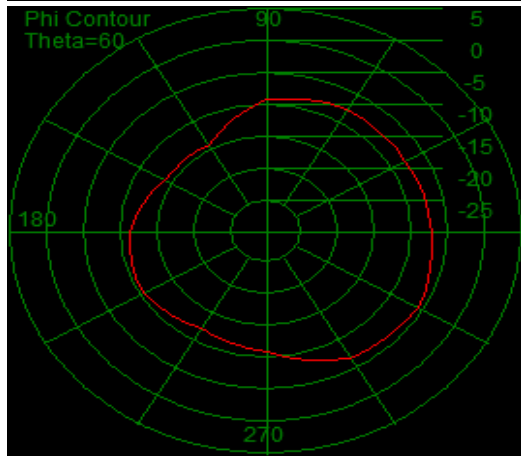
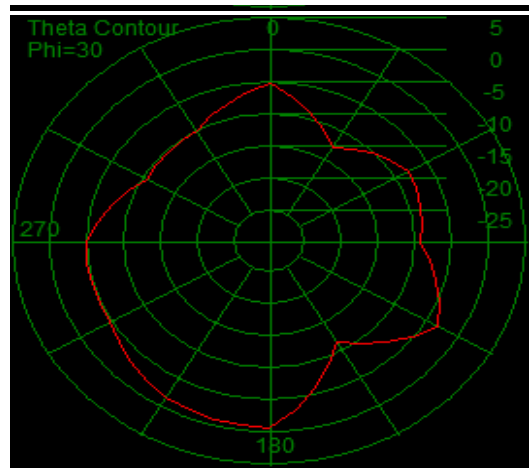
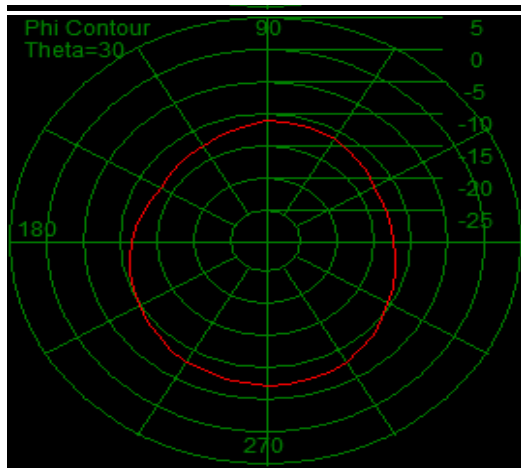
		0	30	60	90	120	150	180	210	240	270	300	330	360
H+V Total (30° Step)	0	-5.98	-5.40	-3.87	-3.61	-4.59	-5.25	--	--	--	--	--	--	--
	30	-12.72	-12.93	-11.44	-11.22	-12.83	-13.51	-11.65	-9.95	-8.26	-7.44	-8.06	-10.84	--
	60	-7.54	-8.04	-7.89	-9.32	-14.42	-14.11	-11.26	-10.63	-12.34	-11.14	-6.99	-6.19	--
	90	-18.27	-9.51	-6.74	-11.65	-17.71	-8.14	-4.61	-4.96	-6.11	-2.47	-2.38	-5.89	--
	120	-3.68	-3.54	-7.90	-9.69	-5.82	-8.37	-6.65	-4.85	-6.96	-8.85	-5.90	-4.32	--
	150	-10.58	-11.95	-15.75	-13.46	-9.85	-5.87	-2.90	-1.77	-2.16	-4.31	-7.75	-7.96	--
	180	-1.77	-0.80	0.02	0.39	0.51	0.10	--	--	--	--	--	--	--

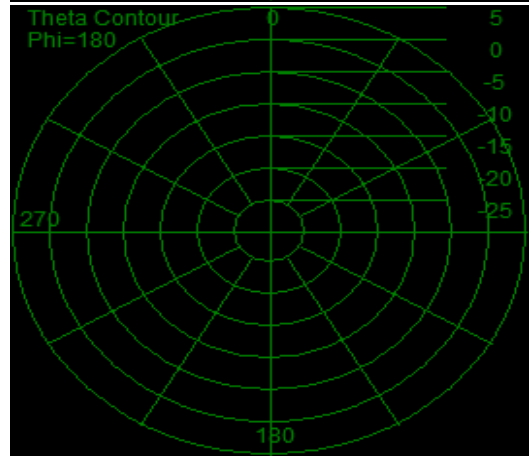
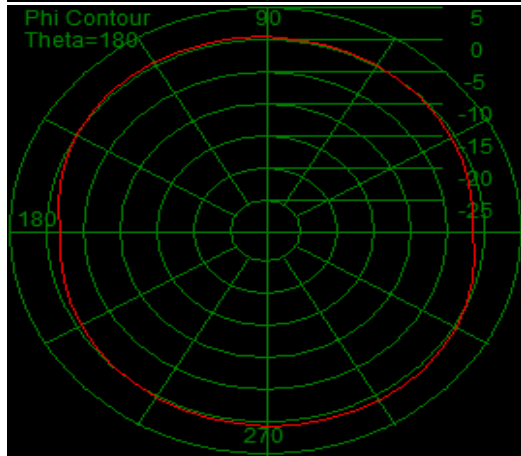
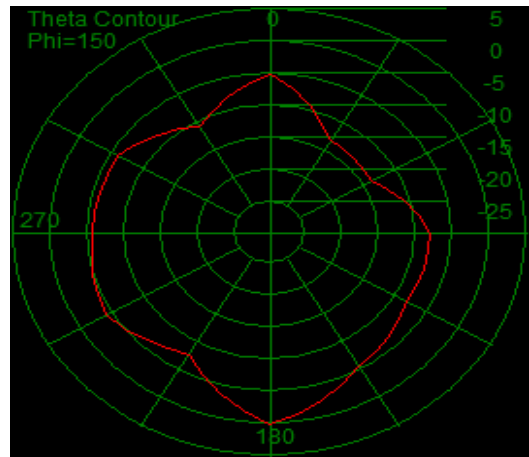
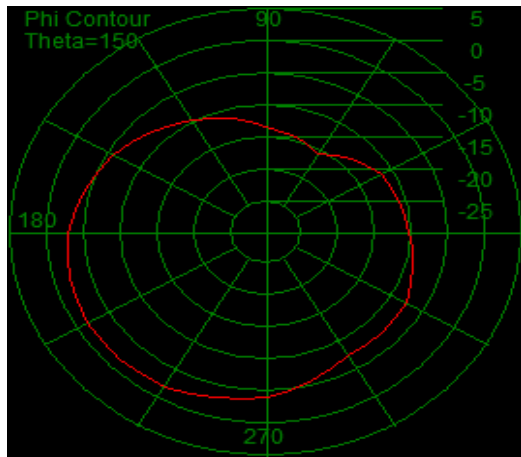
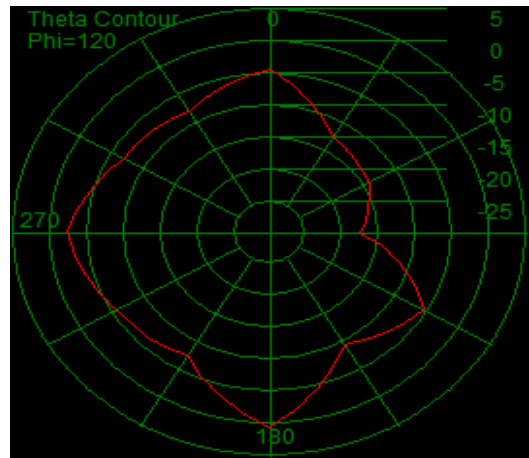
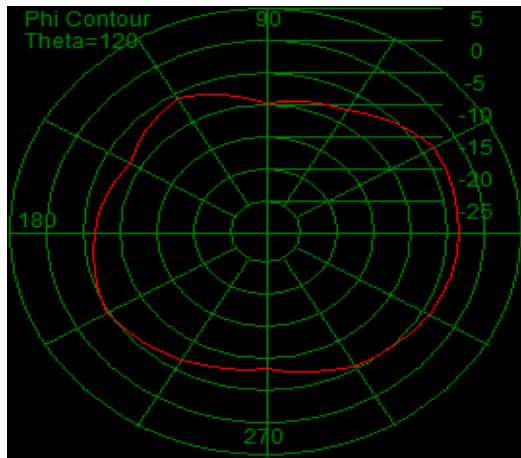
		0	30	60	90	120	150	180	210	240	270	300	330	360
H (30° Step)	0	-6.01	-7.06	-10.03	-17.69	-17.89	-8.33	--	--	--	--	--	--	--
	30	-13.18	-14.06	-14.90	-13.34	-13.73	-16.49	-14.59	-10.32	-8.39	-8.70	-10.59	-13.82	--
	60	-8.98	-9.89	-11.59	-17.44	-21.39	-15.86	-15.97	-16.98	-17.31	-15.00	-9.25	-7.63	--
	90	-26.60	-17.61	-12.84	-17.21	-21.07	-9.03	-6.30	-9.79	-8.99	-3.27	-5.19	-13.96	--
	120	-3.70	-3.66	-7.92	-20.66	-9.27	-9.45	-7.39	-6.57	-9.96	-11.51	-6.32	-4.65	--
	150	-15.71	-15.67	-20.95	-20.56	-11.65	-5.96	-3.16	-2.97	-4.16	-6.68	-12.18	-13.61	--
	180	-2.39	-5.27	-14.89	-7.37	-1.76	-0.31	--	--	--	--	--	--	--

		0	30	60	90	120	150	180	210	240	270	300	330	360
V (30° Step)	0	-27.63	-10.38	-5.08	-3.79	-4.80	-8.20	--	--	--	--	--	--	--
	30	-22.69	-19.32	-14.05	-15.36	-20.09	-16.55	-14.72	-20.85	-23.51	-13.43	-11.61	-13.87	--
	60	-13.02	-12.64	-10.30	-10.05	-15.39	-18.89	-13.06	-11.77	-14.01	-13.43	-10.91	-11.69	--
	90	-18.96	-10.24	-7.97	-13.06	-20.39	-15.46	-9.52	-6.70	-9.25	-10.23	-5.60	-6.63	--
	120	-28.82	-19.00	-31.36	-10.05	-8.42	-14.95	-14.75	-9.71	-9.97	-12.25	-16.29	-15.73	--
	150	-12.17	-14.35	-17.32	-14.40	-14.55	-22.97	-15.35	-7.93	-6.50	-8.07	-9.68	-9.34	--
	180	-10.57	-2.72	-0.12	-0.41	-3.39	-10.28	--	--	--	--	--	--	--

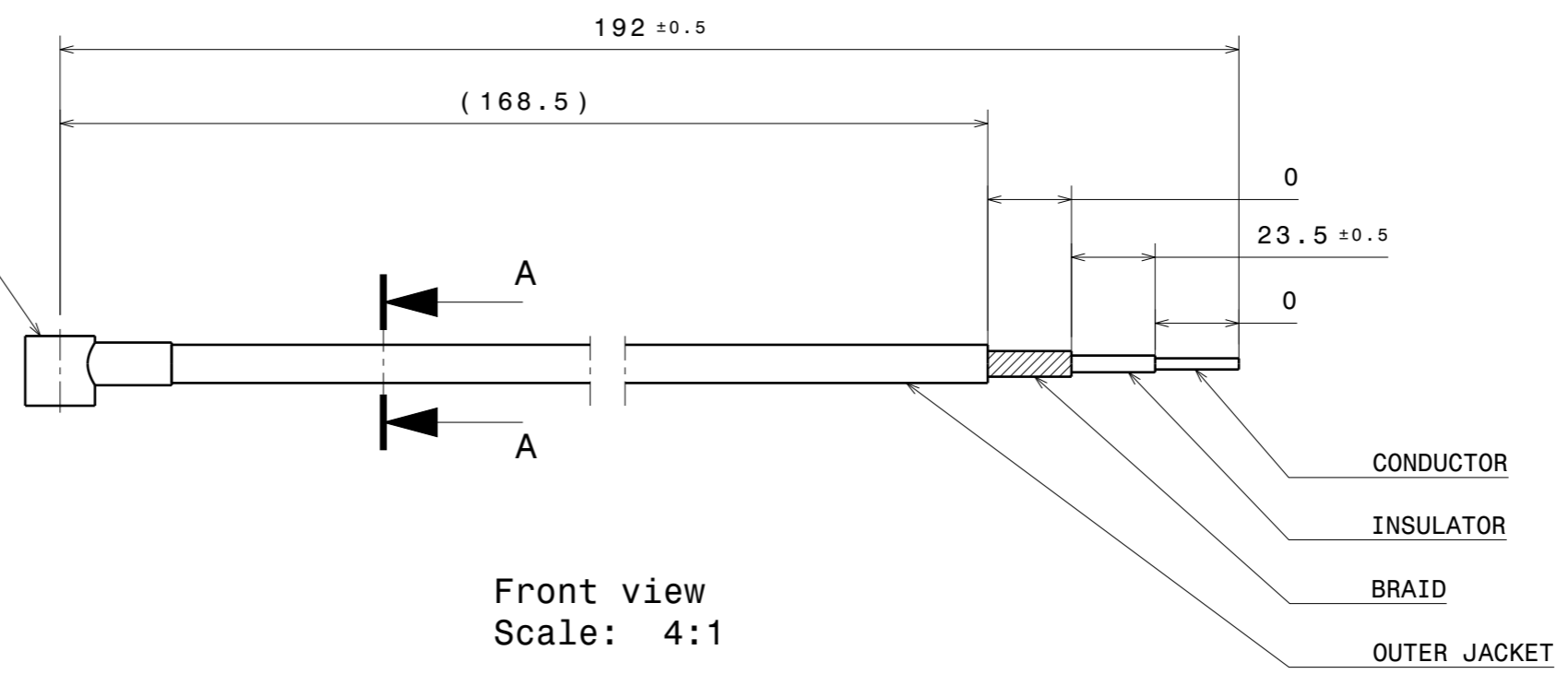
[Go to Cover Page](#)







UFL CONNECTOR
 MATE WITH I-PEX MHF1 SERIES AND HIROSE U.FL SERIES
 MATING HEIGHT: MAX 2.5



Front view
 Scale: 4:1

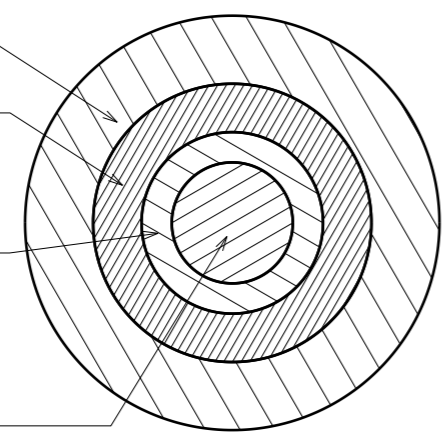
IMPEDANCE: 50Ω ±2

OUTER JACKET
 MAX DIAMETER: 1.37

BRAID

INSULATOR

CONDUCTOR
 DIAMETER: 0.4
 WIRE TYPE: STRANDED



Section cut A-A
 Scale: 40:1

NO BURRS ALLOWED
 GENERAL TOLERANCE ACC. TO ISO 20457 - TG4
 ALL DIMENSIONS IN MM

-	-	-	-	-	-
03	DVT RELEASE	20231129	GB	EL	GB
02	EVT4 RELEASE	20231103	GB	KR	GB
01	INITIAL RELEASE	-	-	-	-
Ind.	Change	YYYYMMDD	Drawn	Checked	Released
					Add. info.

sword

PART NAME: BPOD_Antenna_1.37

WEIGHT (g)	XXX	PART NUMBER	MP10619	INDEX	03
MATERIAL	XX	SIZE	A3	SCALE	1:1
				SHEET	1/1

© SWORD HEALTH. All rights reserved, also regarding any disposal, exploitation, reproduction, editing, distribution, as well as in the event of applications for industrial property rights.