

Model No.: HL-RF20

CAUTIONS & WARNINGS

- To reduce the risk of over heatingm,do not operate with lamps missing from sockets.Replace lamp promptly with only 24 volt,0.5Watt S14 type(provided with product).
- When products are used in outdoor applications,connect the product to Ground Fault Circuit Interrupting(GFCI) outlet.If one is not provided, contact a qualified electrician for proper installation.
- This seasonal use product is not intended for permanent installation or use.
- Do not mount or place near gas or electric heaters, fireplaces, candles or other similar sources of heat.
- Do not secure the wiring of the product with staples or nails, or place on sharp hooks or nails.
- Do not let lamps rest on the supply cord or on any wire.
- Unplug the product when leaving the house,or when retiring for the night, or if left unattended.
- This is an electric product-not a toy! To avoid risk of fire, burns, personal injury and electric shock it should not be played with or placed where small children can reach it.
- Do not use this product for other than its intended use.
- Do not hang ornaments or other objects from cord,wire,or light string.
- Do not close doors or windows on the product or extension cords as this may damage the wire insulation.
- Do not cover the product with cloth,paper or any material not part of the product when in use.
- Read and follow all instructions that are on the product or provided with the product.
- When storing the product, carefully remove the product from wherever it is placed,including trees,branches,or bushes,to avoid any undue strain or stress on the product conductors,connections,and wires.
- When not in use,store neatly in a cool,dry location protected from sunlight.

FCC STATEMENT :

This device complies with Part 15 of the FCC Rules. Operation is subject to the following two conditions:

- (1) This device may not cause harmful interference, and
- (2) This device must accept any interference received, including interference that may cause undesired operation.

Warning: Changes or modifications not expressly approved by the party responsible for compliance could void the user's authority to operate the equipment.

NOTE: This equipment has been tested and found to comply with the limits for a Class B digital device, pursuant to Part 15 of the FCC Rules. These limits are designed to provide reasonable protection against harmful interference in a residential installation. This equipment generates uses and can radiate radio frequency energy and, if not installed and used in accordance with the instructions, may cause harmful interference to radio communications. However, there is no guarantee that interference will not occur in a particular installation. If this equipment does cause harmful interference to radio or television reception, which can be determined by turning the equipment off and on, the user is encouraged to try to correct the interference by one or more of the following measures:

- Reorient or relocate the receiving antenna.
- Increase the separation between the equipment and receiver.
- Connect the equipment into an outlet on a circuit different from that to which the receiver is connected.
- Consult the dealer or an experienced radio/TV technician for help.

RF warning statement:

The device has been evaluated to meet general RF exposure requirement. The device can be used in portable exposure condition without restriction.

SAVE THESE INSTRUCTION

OUTDOOR WEATHERPROOF STRING LIGHTS

USER MANUAL

Thank you for purchasing Outdoor Weatherproof String Lights, please read this user manual carefully firstly, we will introduce some of the important features and operating procedures of this product, please keep this manual in a safe place for future reference.

PACKAGE CONTENTS

- String light

×1
- LED light bulb

×26
- Remote Control

×1
- User Manual

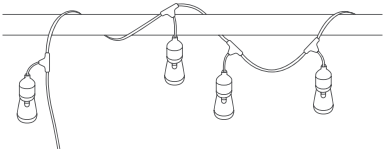
×1

SPECIFICATIONS

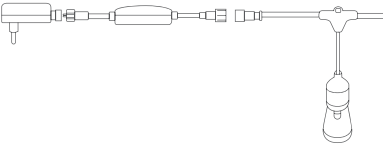
Item	Data
Power	24W Max
Input Voltage	100-240V 50HZ/60HZ
Bulb Quantity	24bulbs+2extra bulbs
Wire Length	49ft
Remote Distance	49ft

INSTALLATION

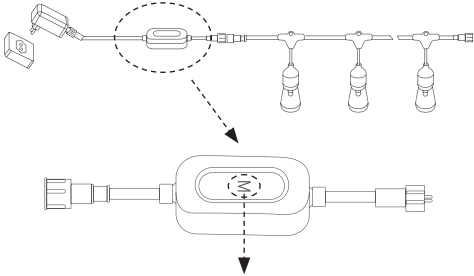
1. Install cable with bulbs on desired location



2. Connect string with controller and adapter

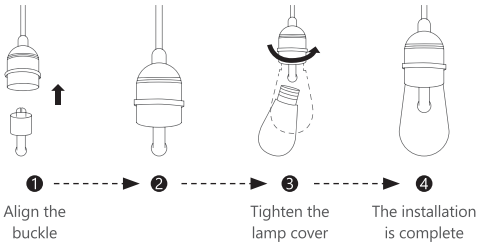


3. Connect the AC plug to the power source,use remote control or the button on the controller to control the light.



The button on the controller can work same as the remote,it can turn on the string light,from static single color to fade,jump,flash and then turn off. When the remote is missing or out of battery, you can choose use this button to control the light.

4. If the bulb is damaged, There are two extra bulbs can be used to replace. The replacement method is as follows:



REMOTE OPERATING INSTRUCTIONS

This RGBW string light has memory function,everytime you turn on,the light will start as last time when you turn off.



ON		OFF
Static Red	Static Green	Static Blue
Static Warm White	Static Yellow	Static Cyan
Static Purple	Static Orange	Increase Light output
3 Colors(RGB) Fade	3 Colors(RGB) Jump	Decrease Light output
7 Colors Fade	7 Colors Jump	Increase Color Change Speed
Auto Color Change	Auto Color flash	Decrease Color Change Speed