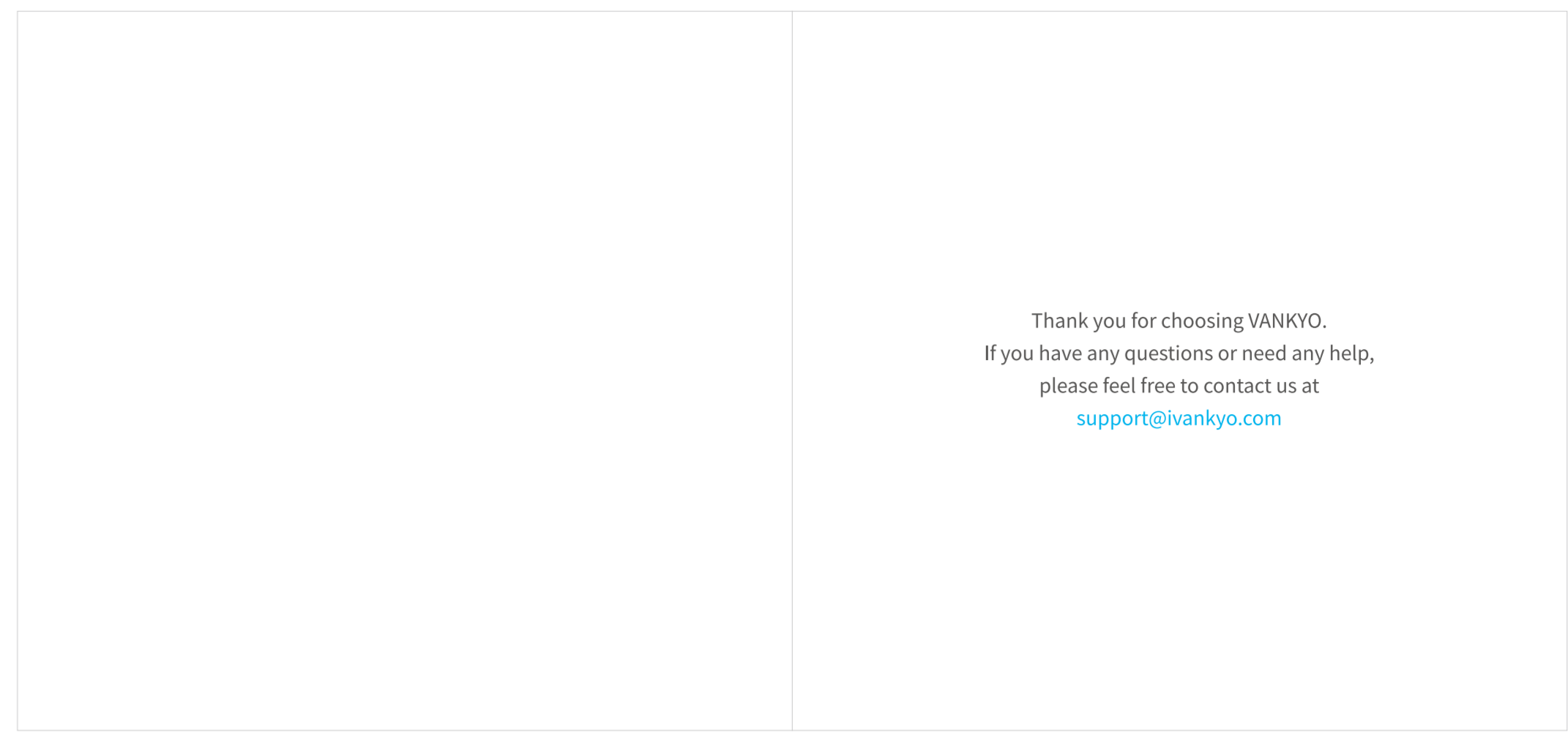
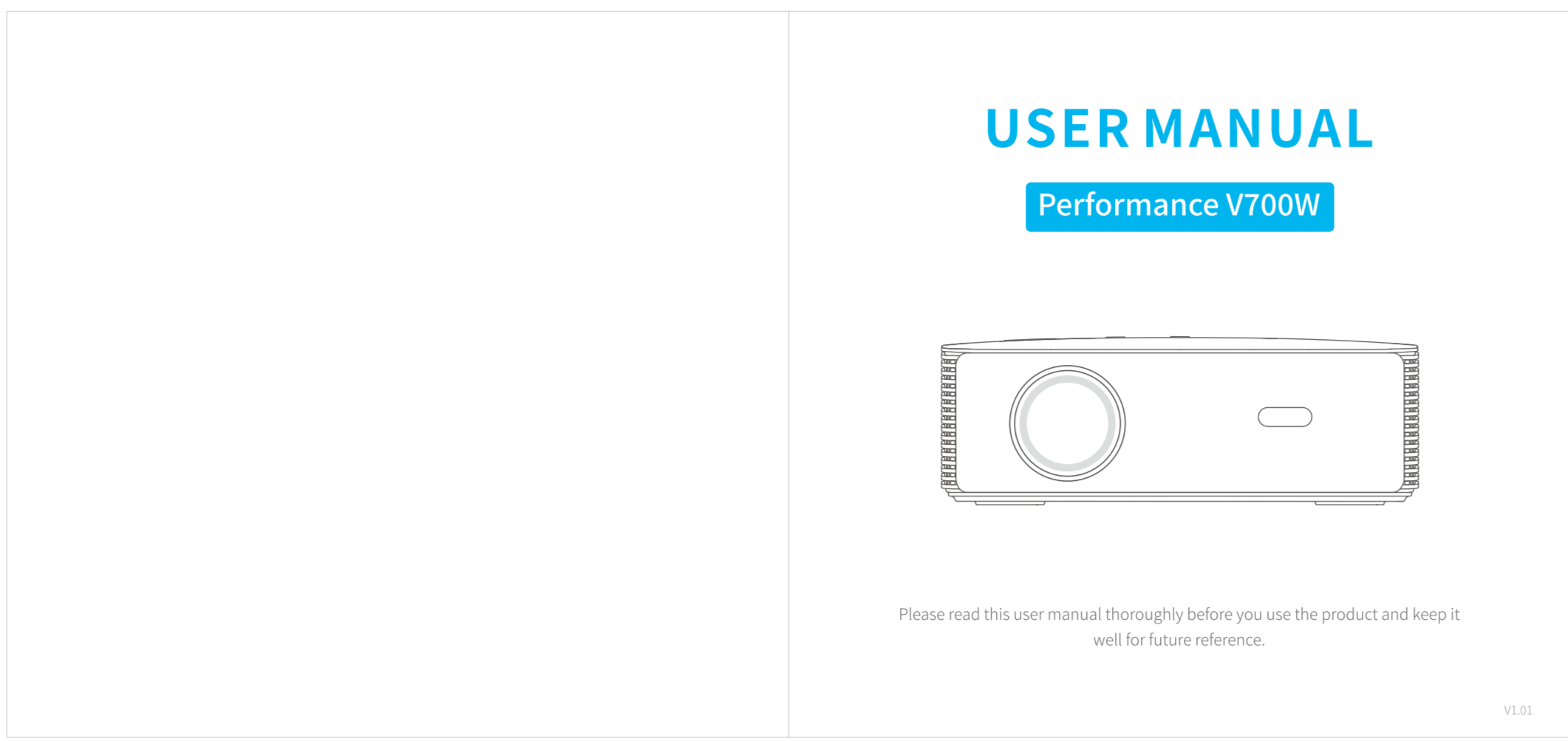
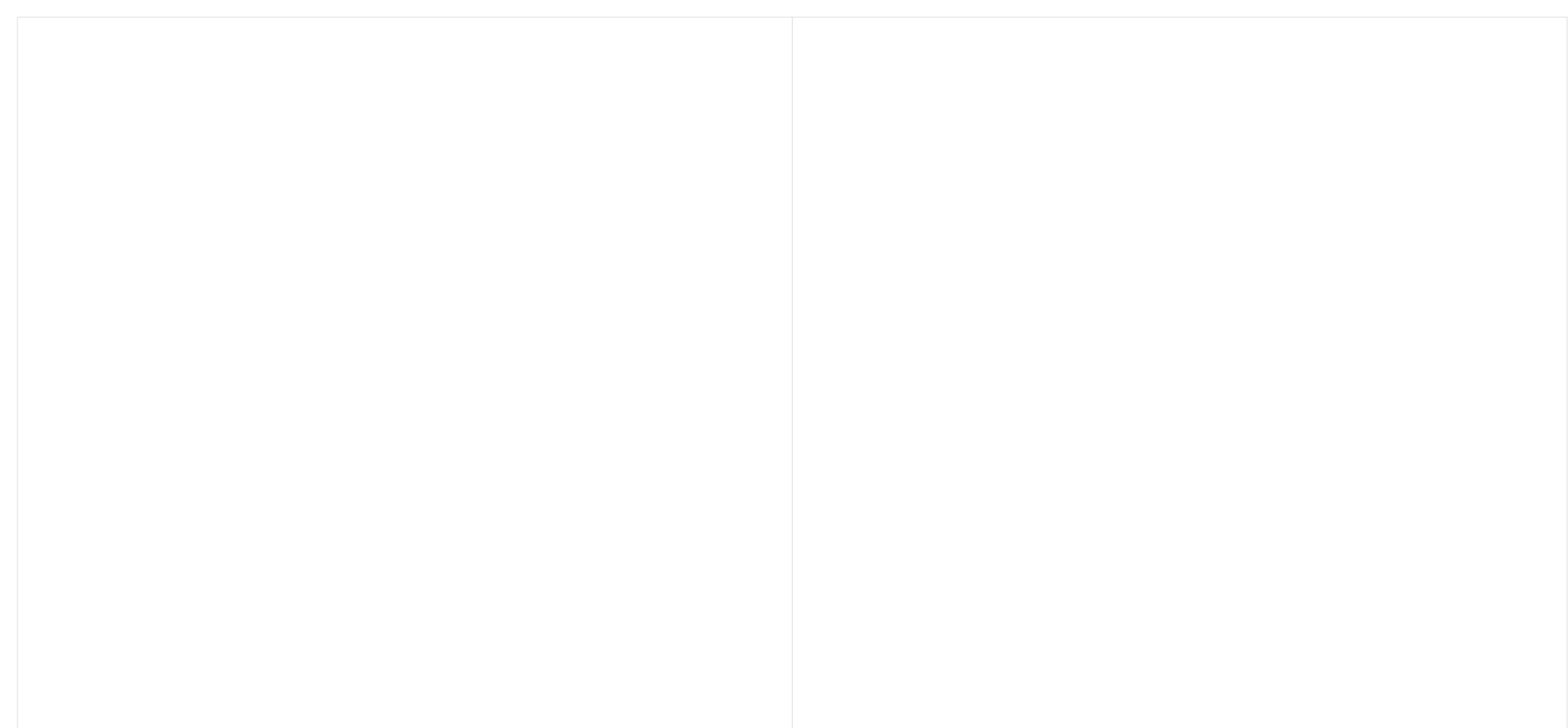
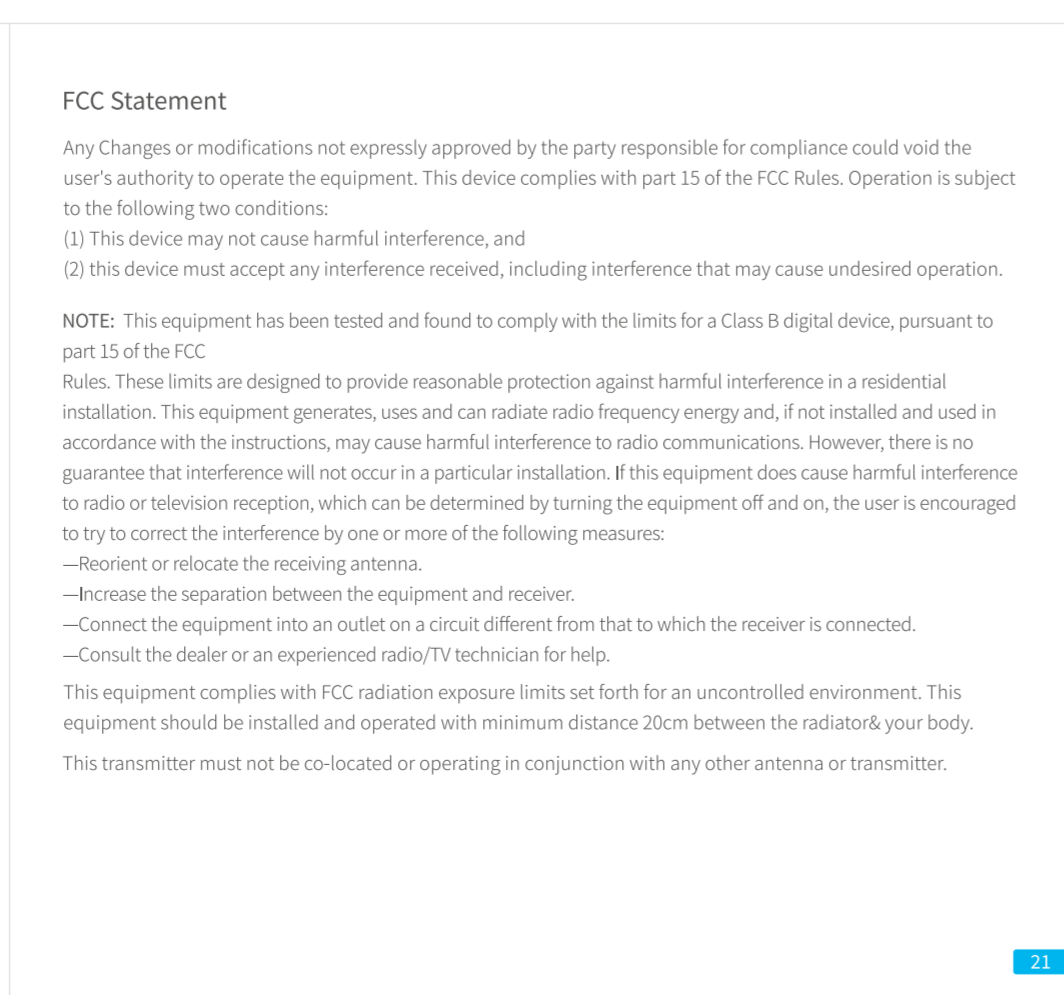
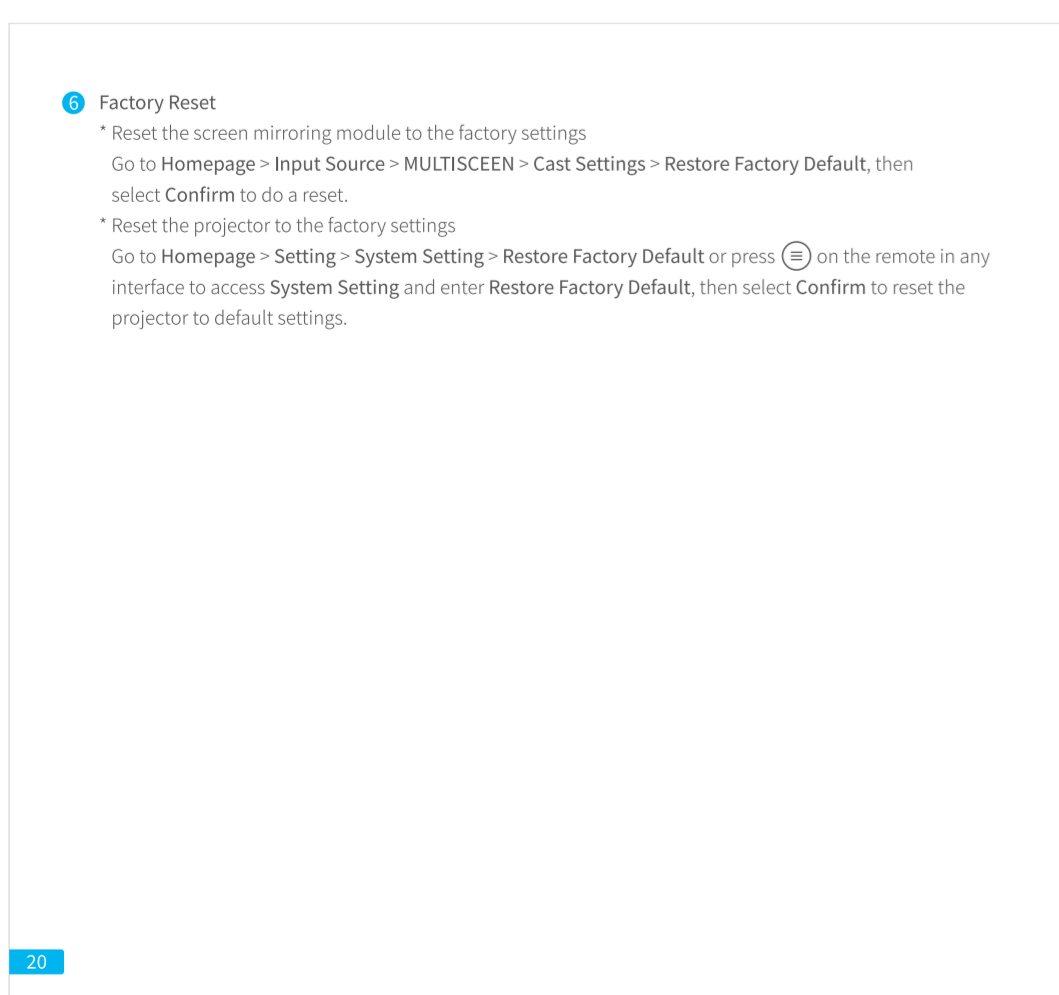
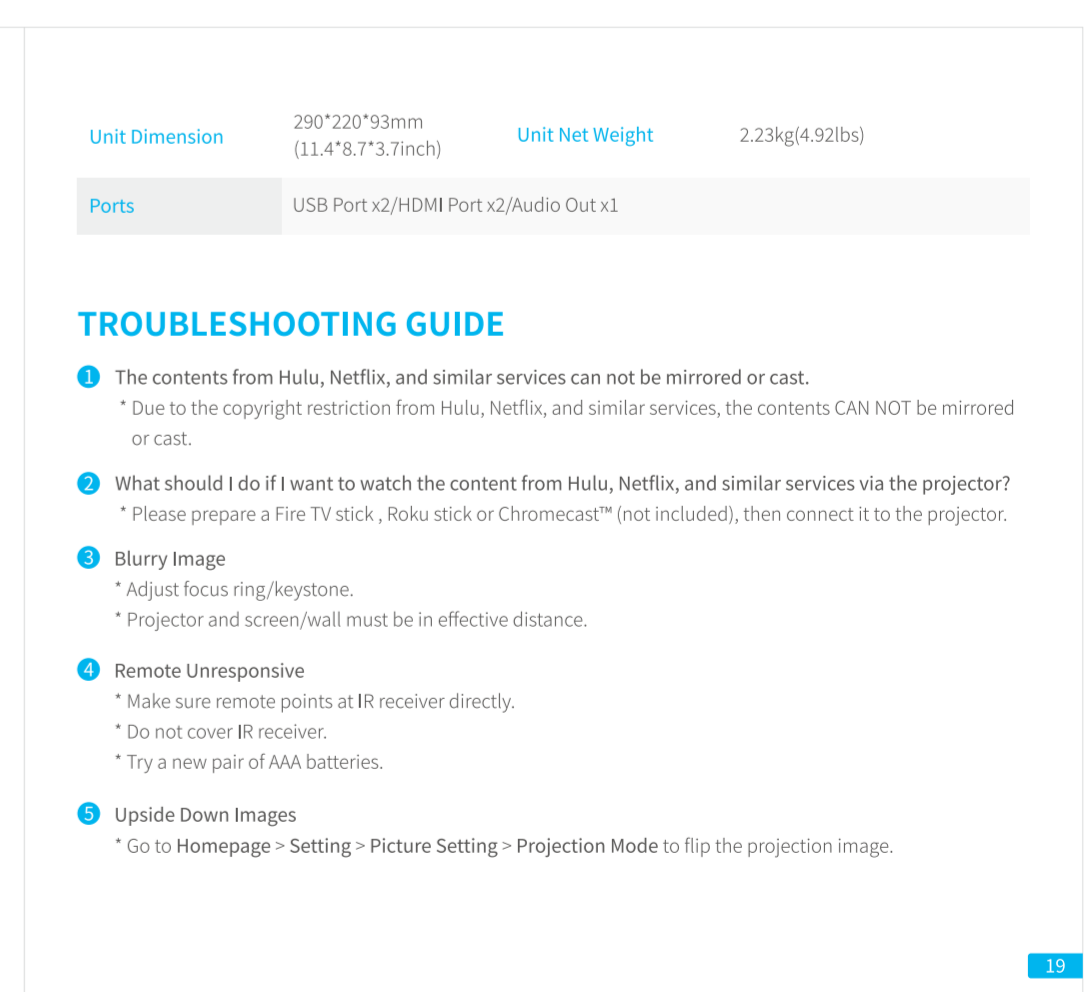
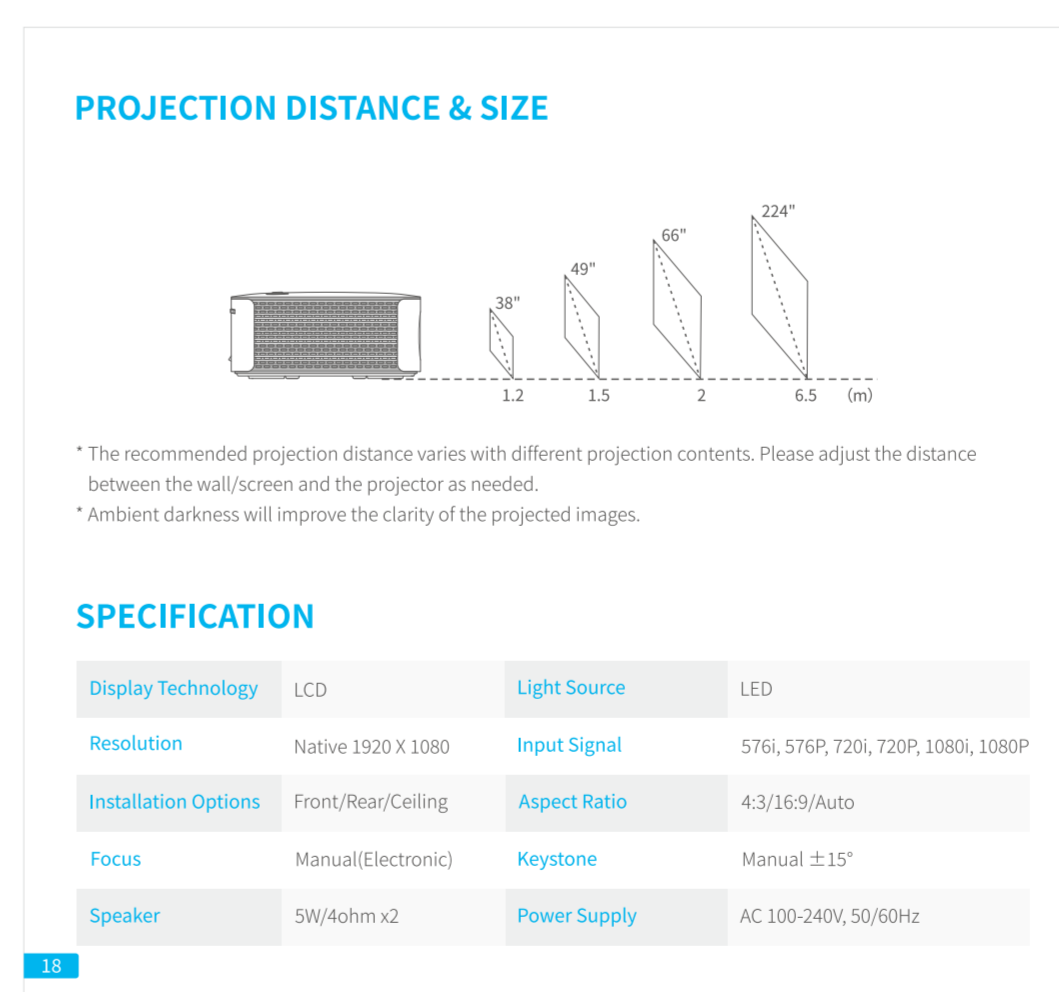
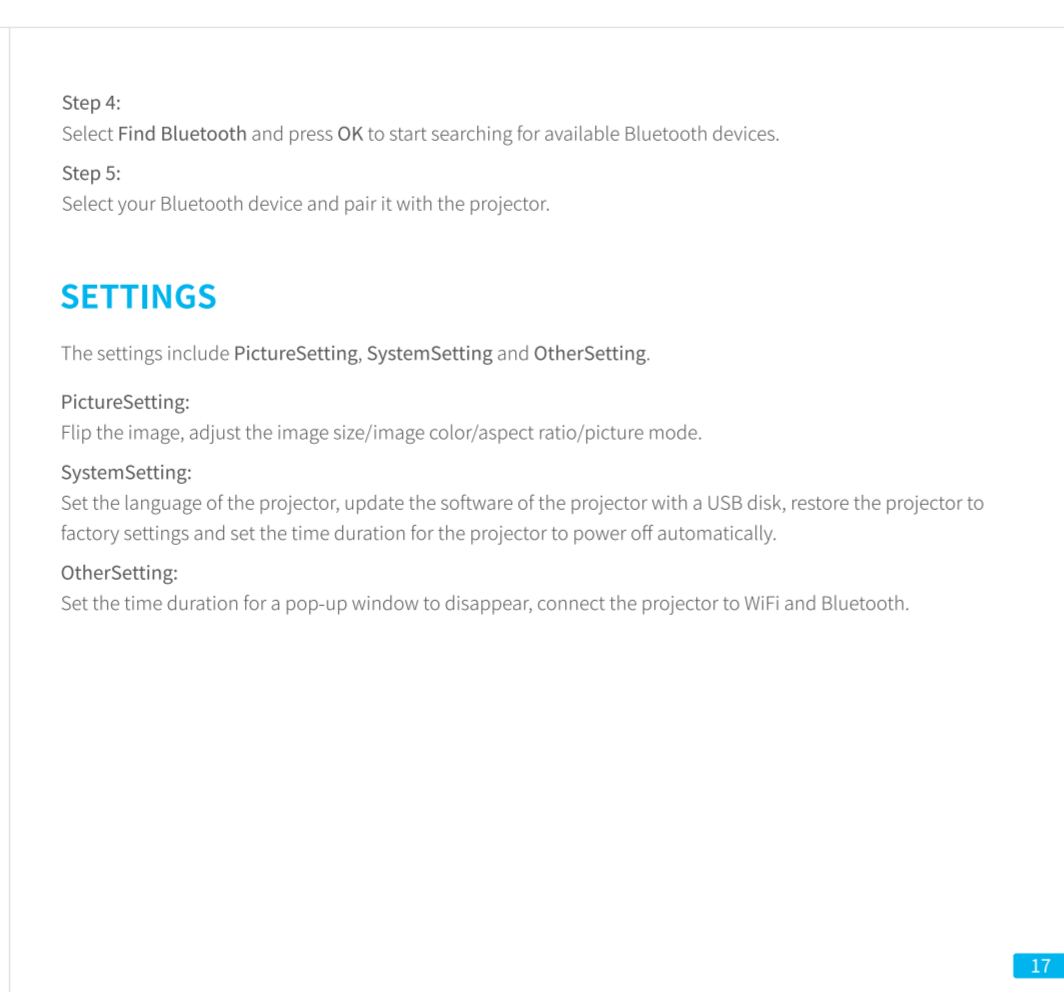
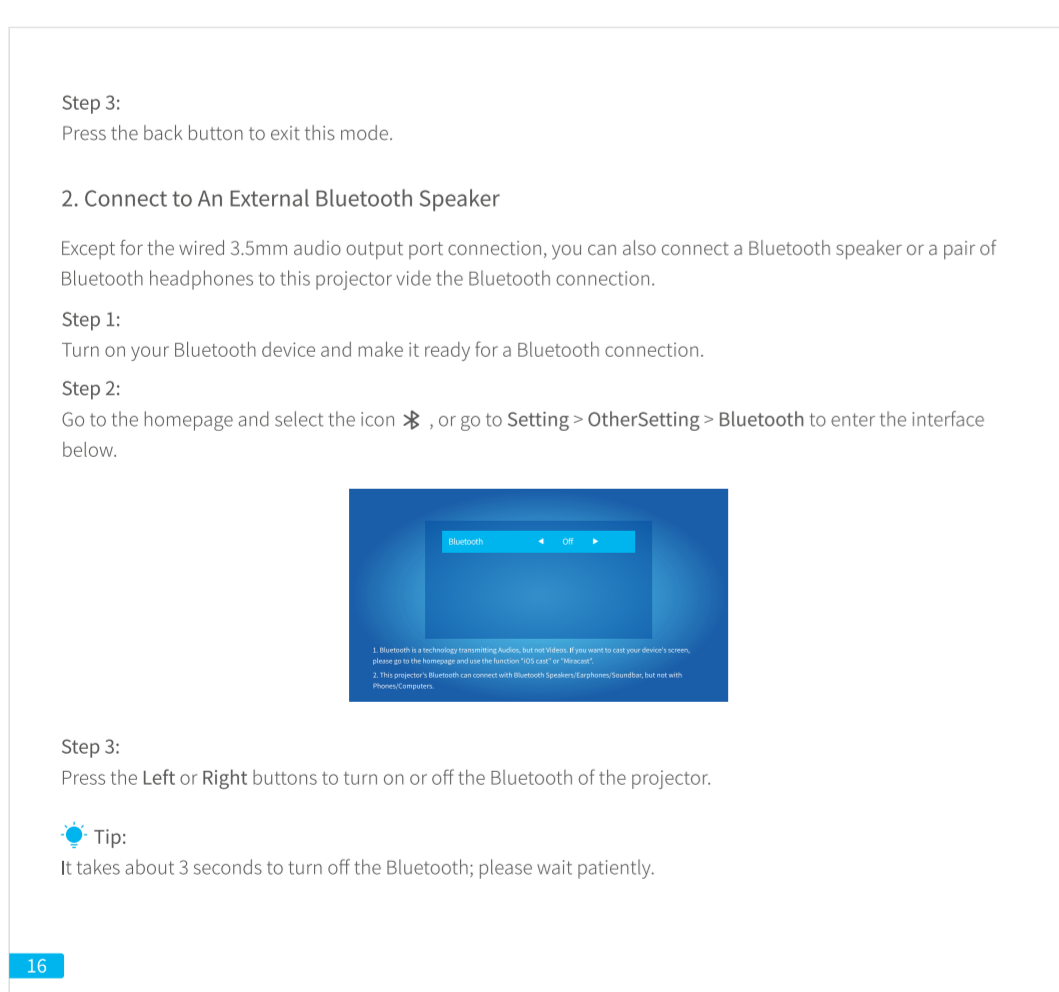
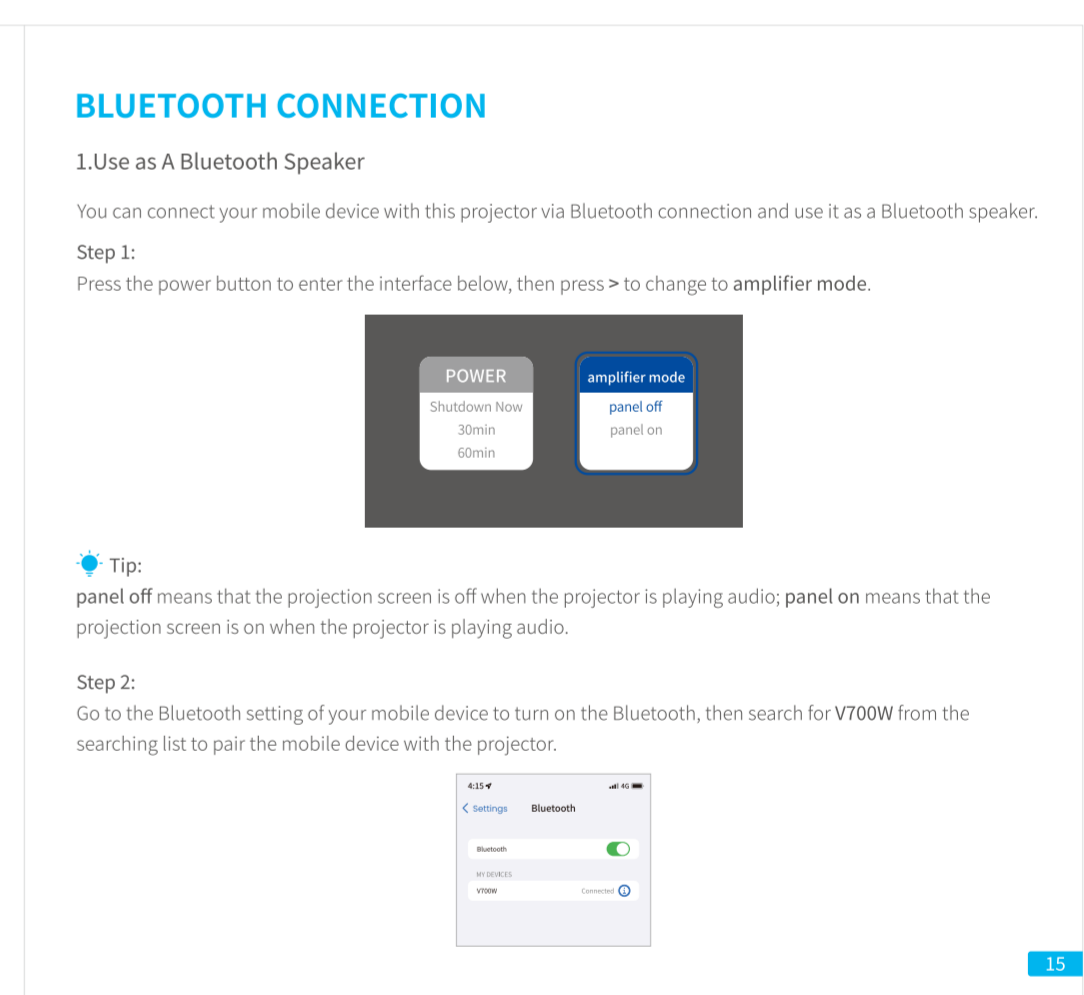
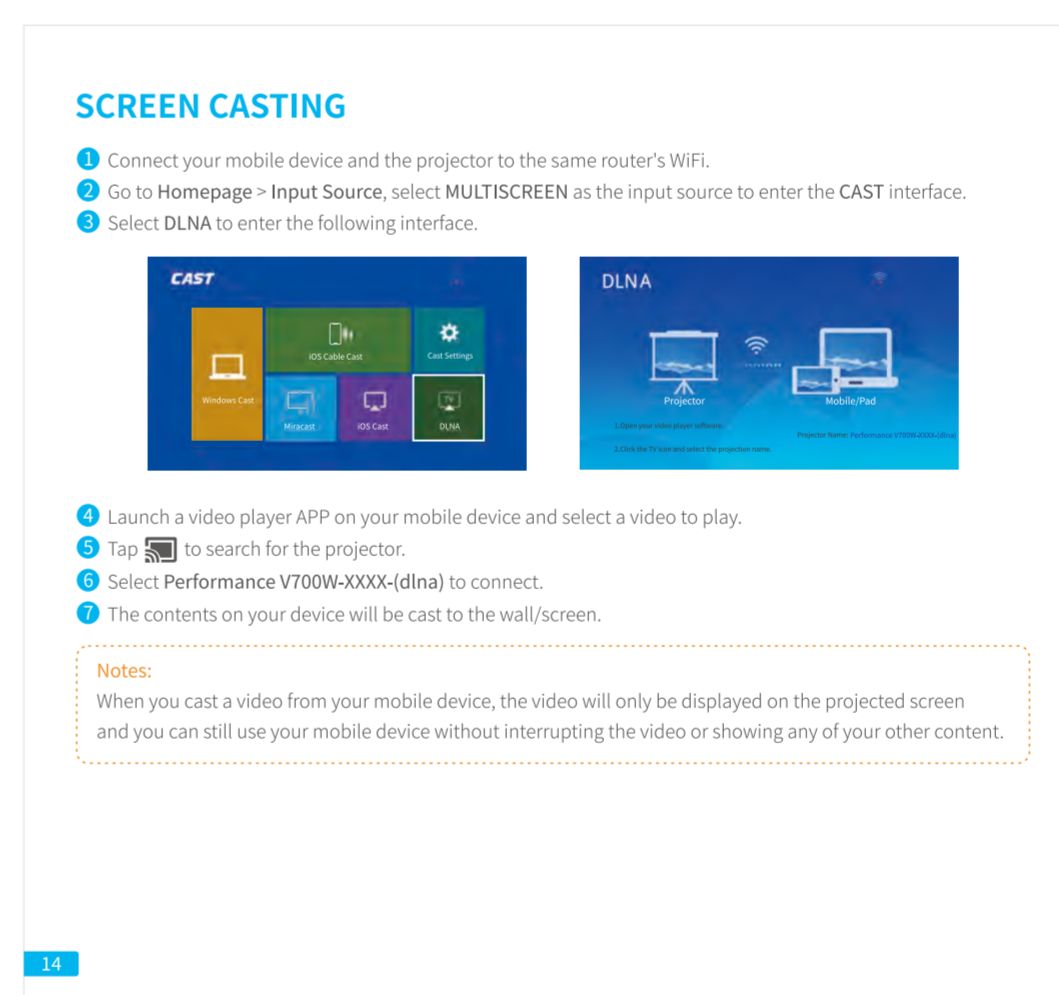
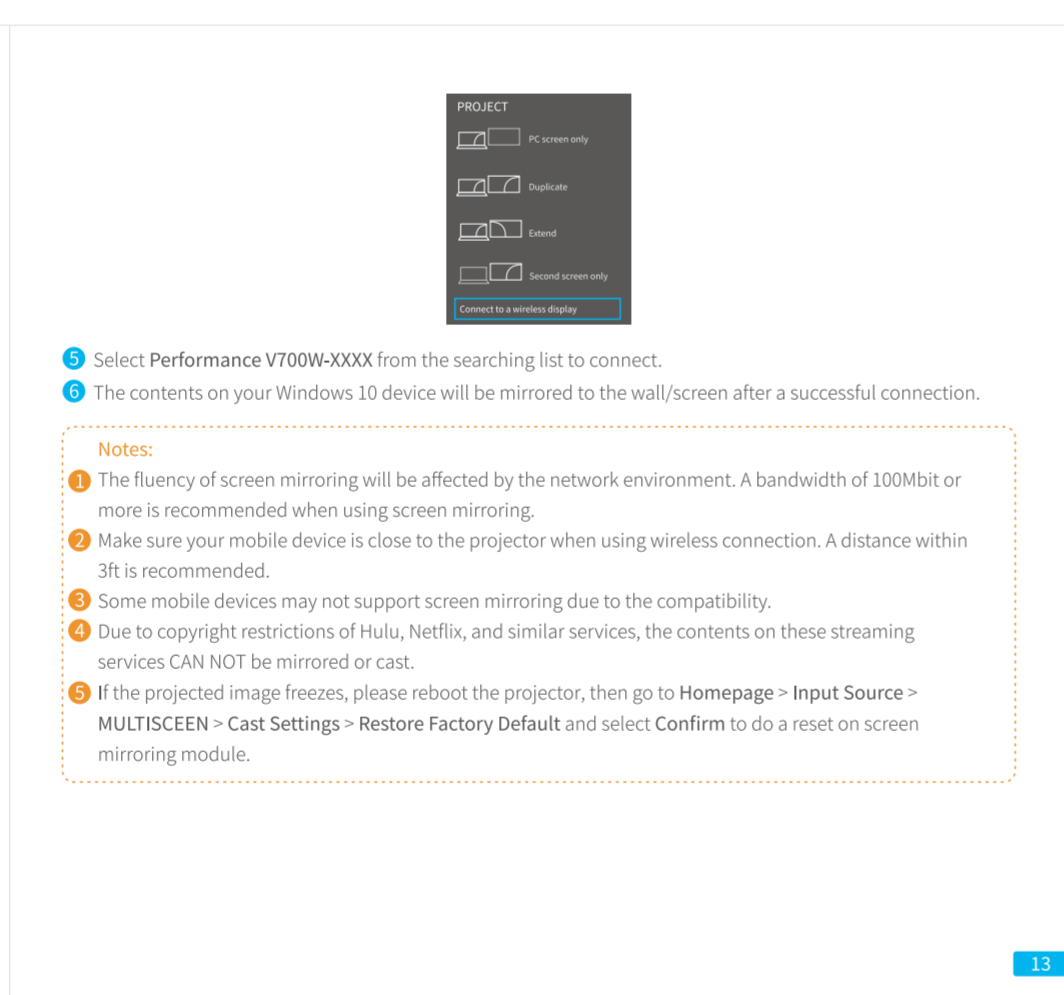
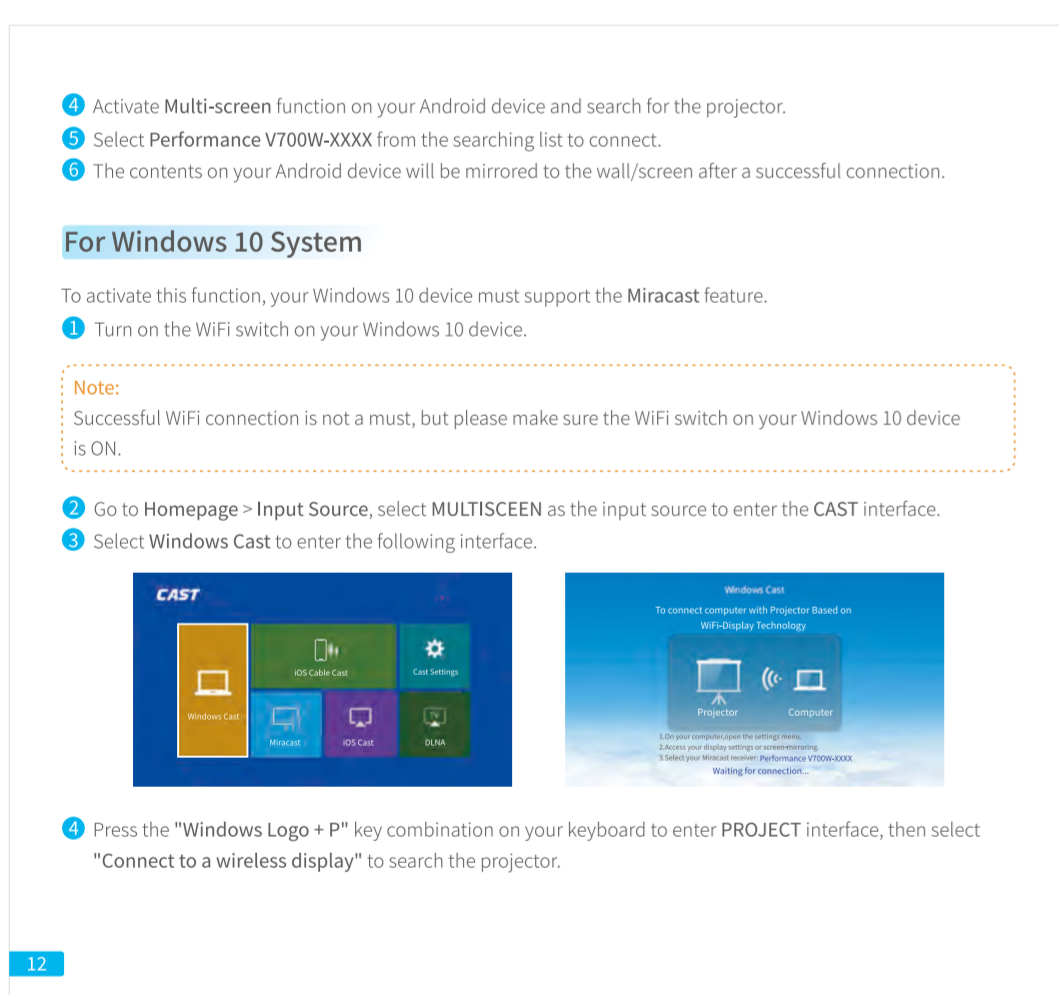
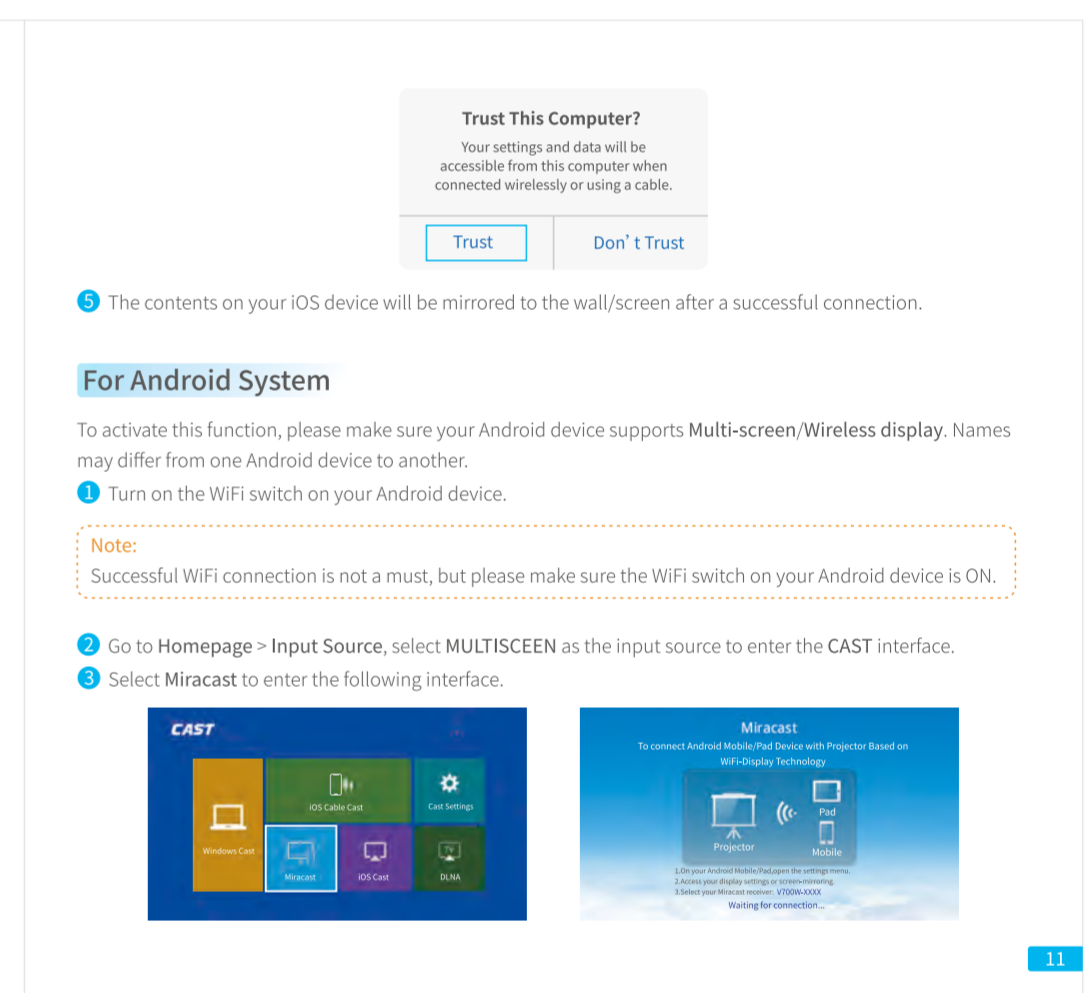
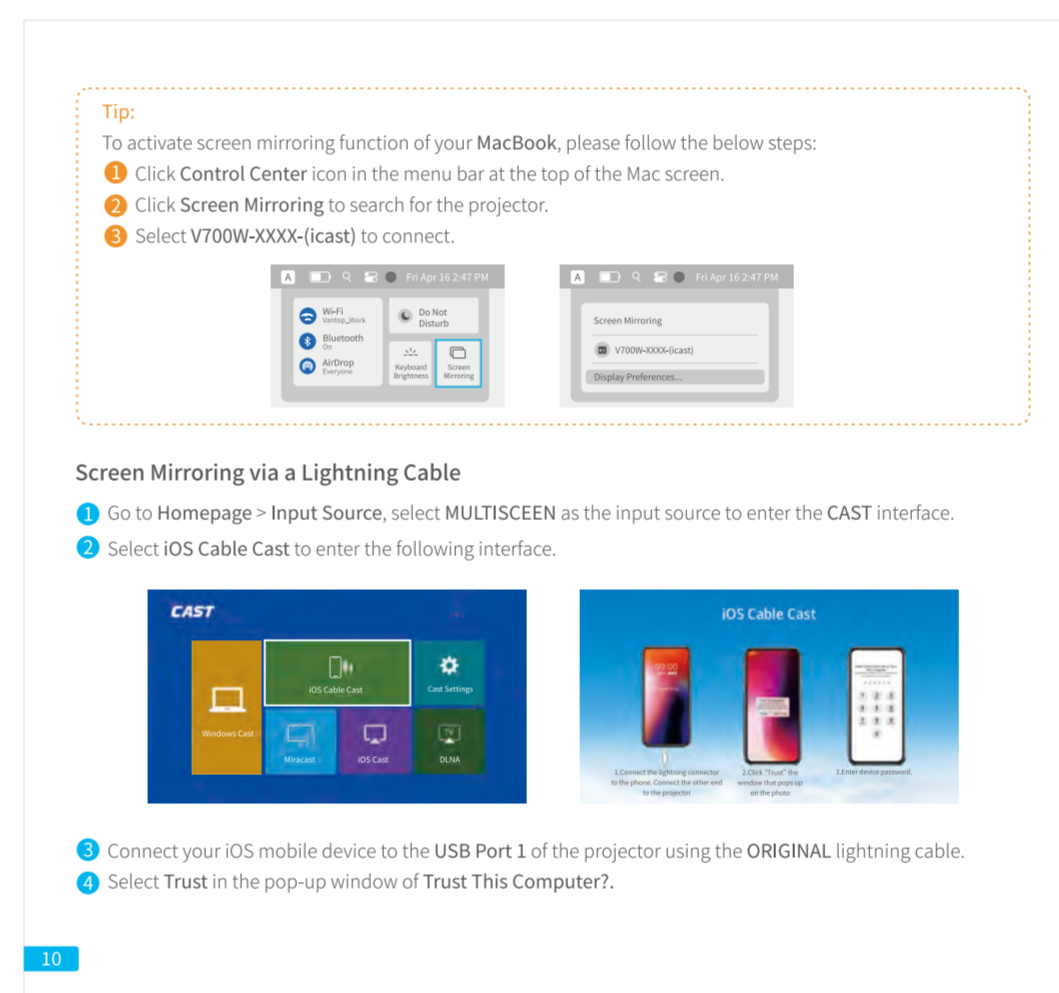
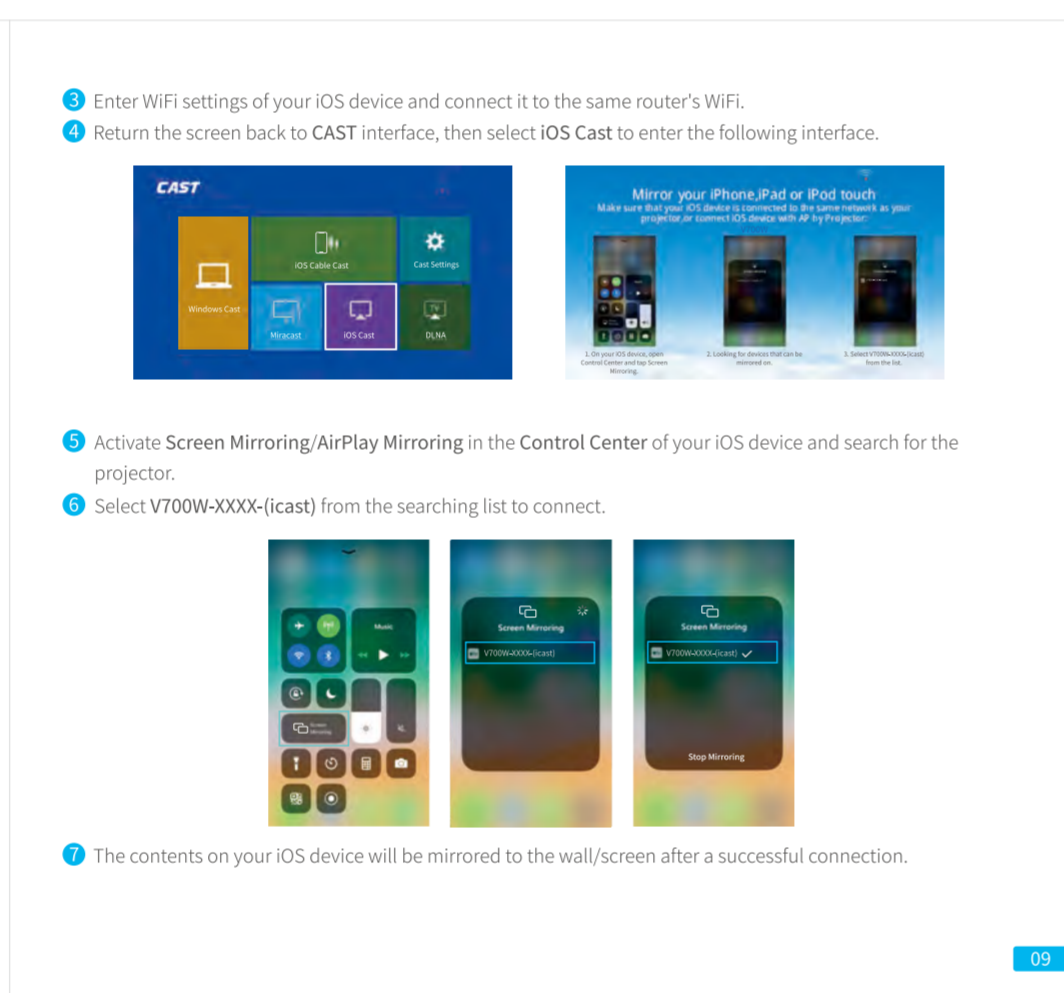
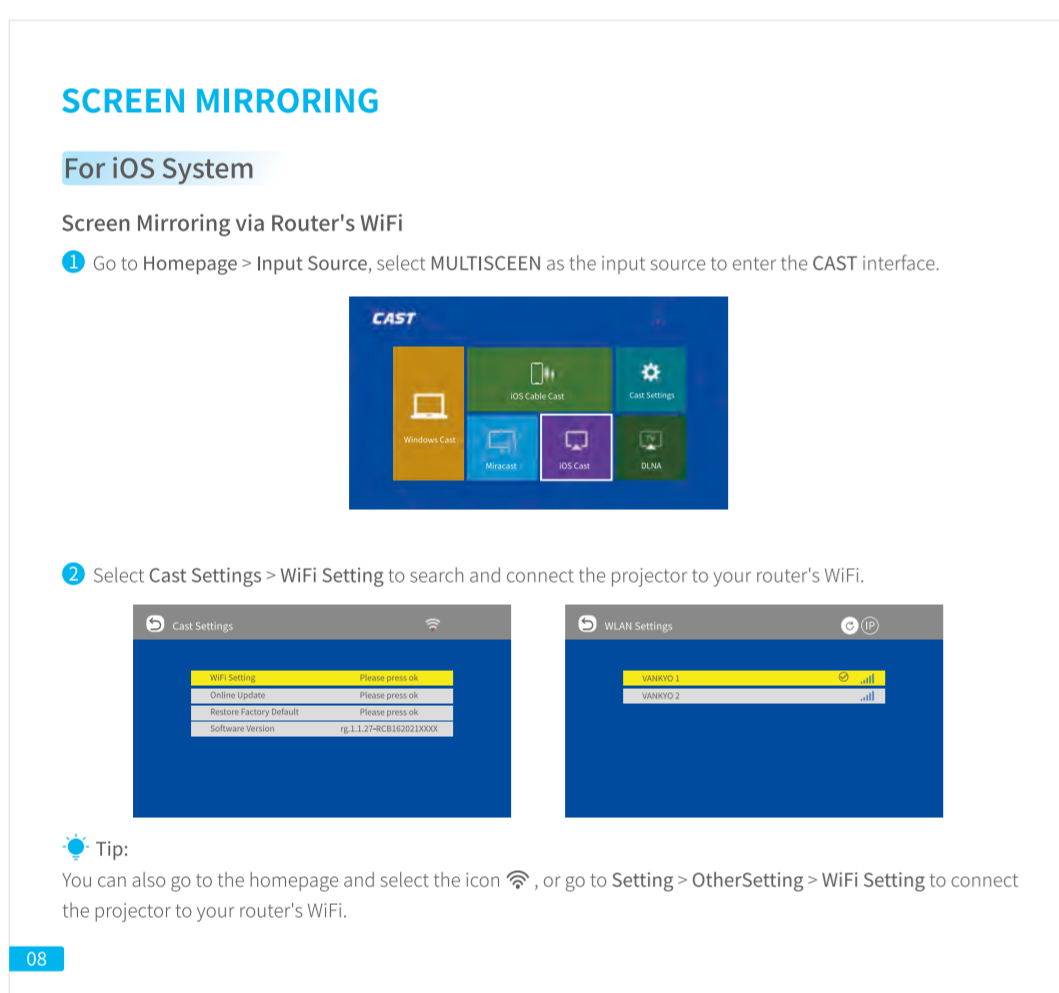
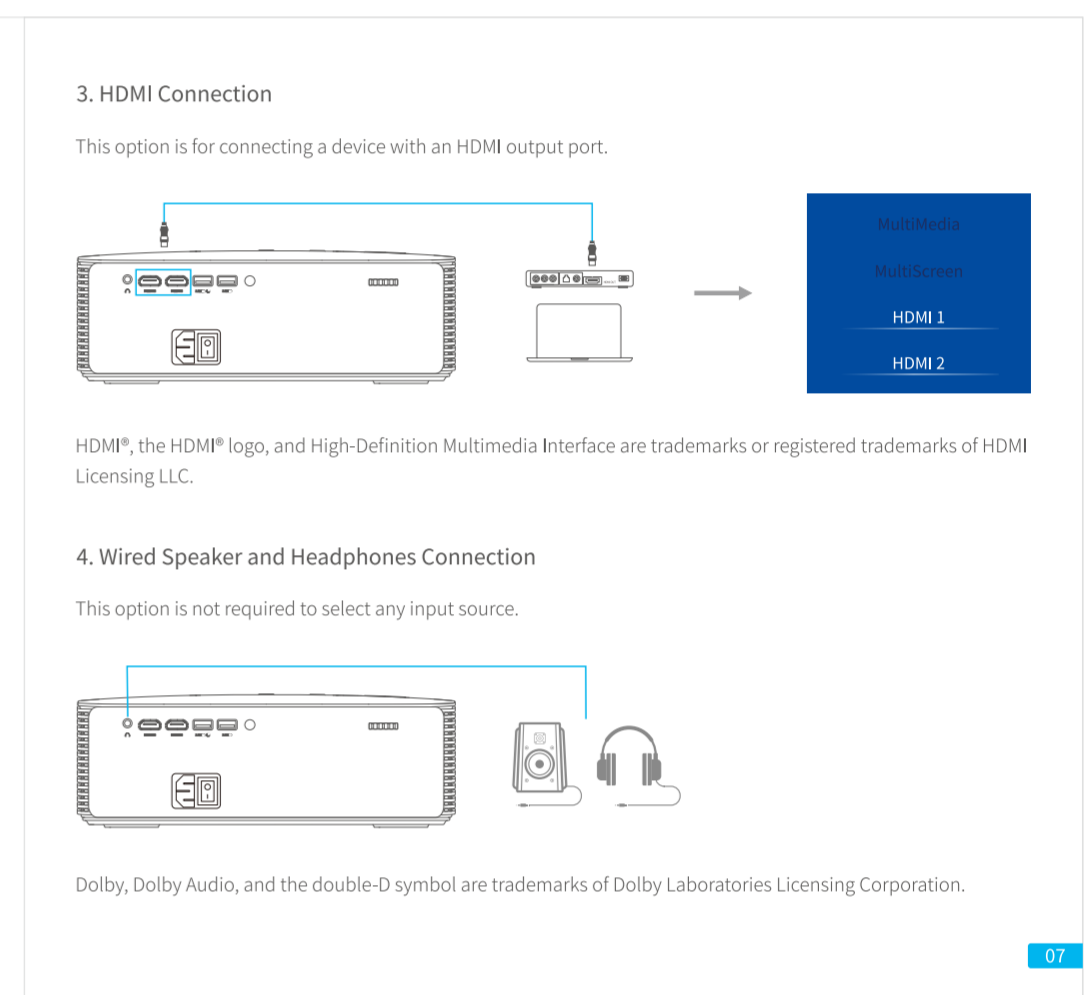
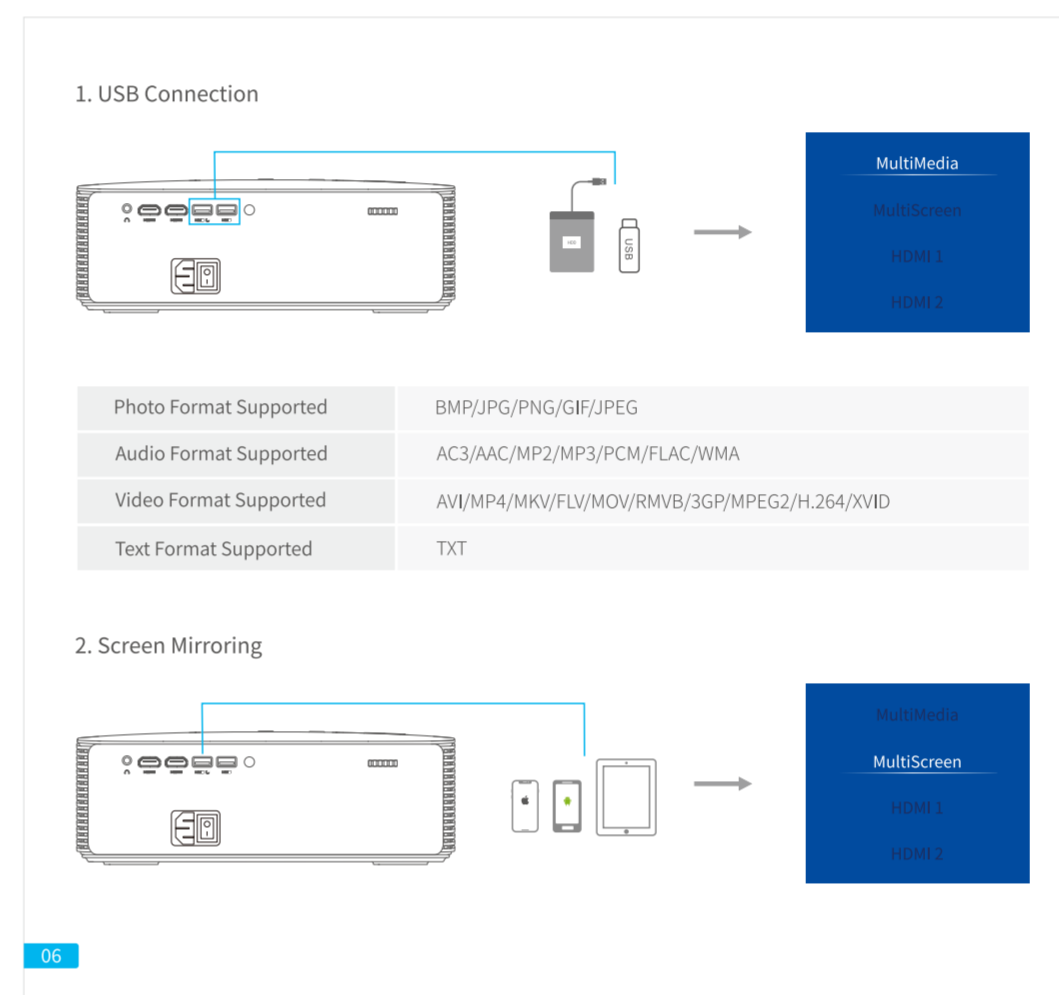
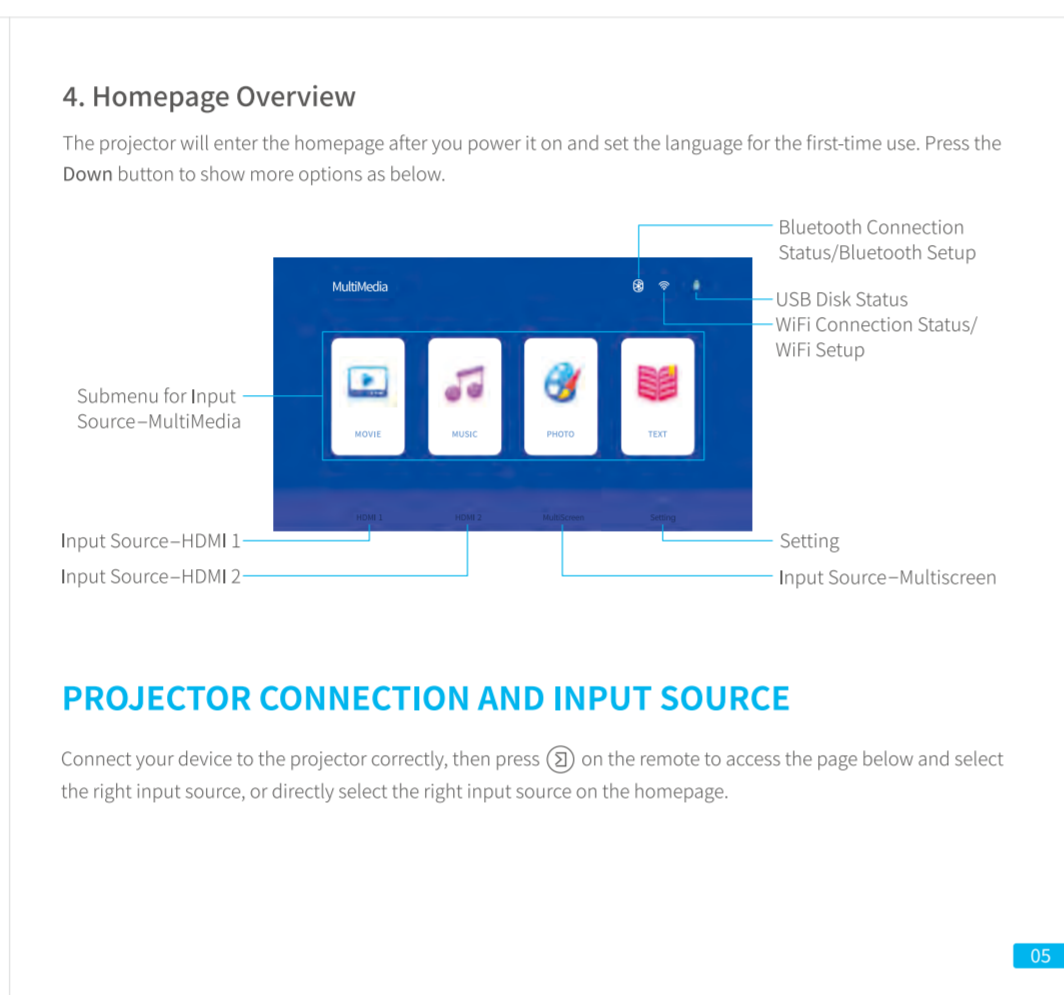
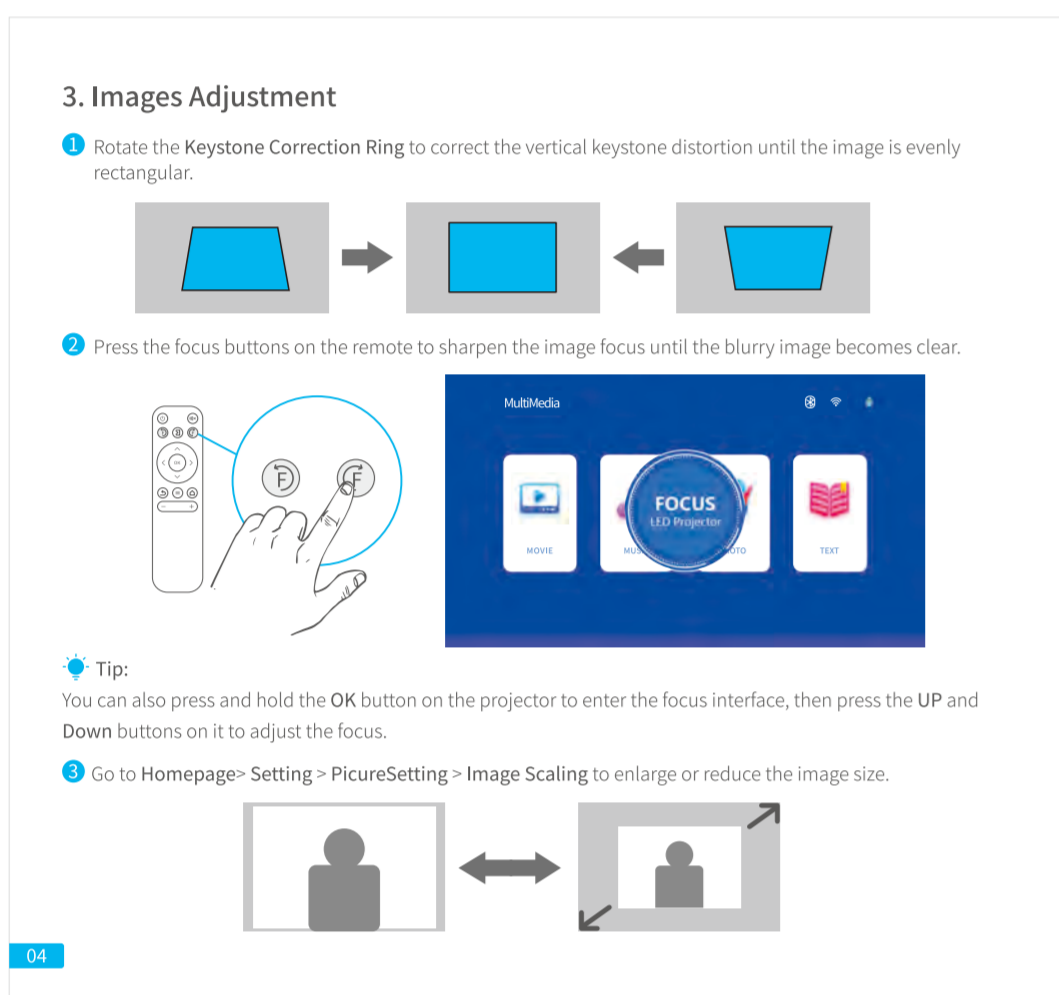
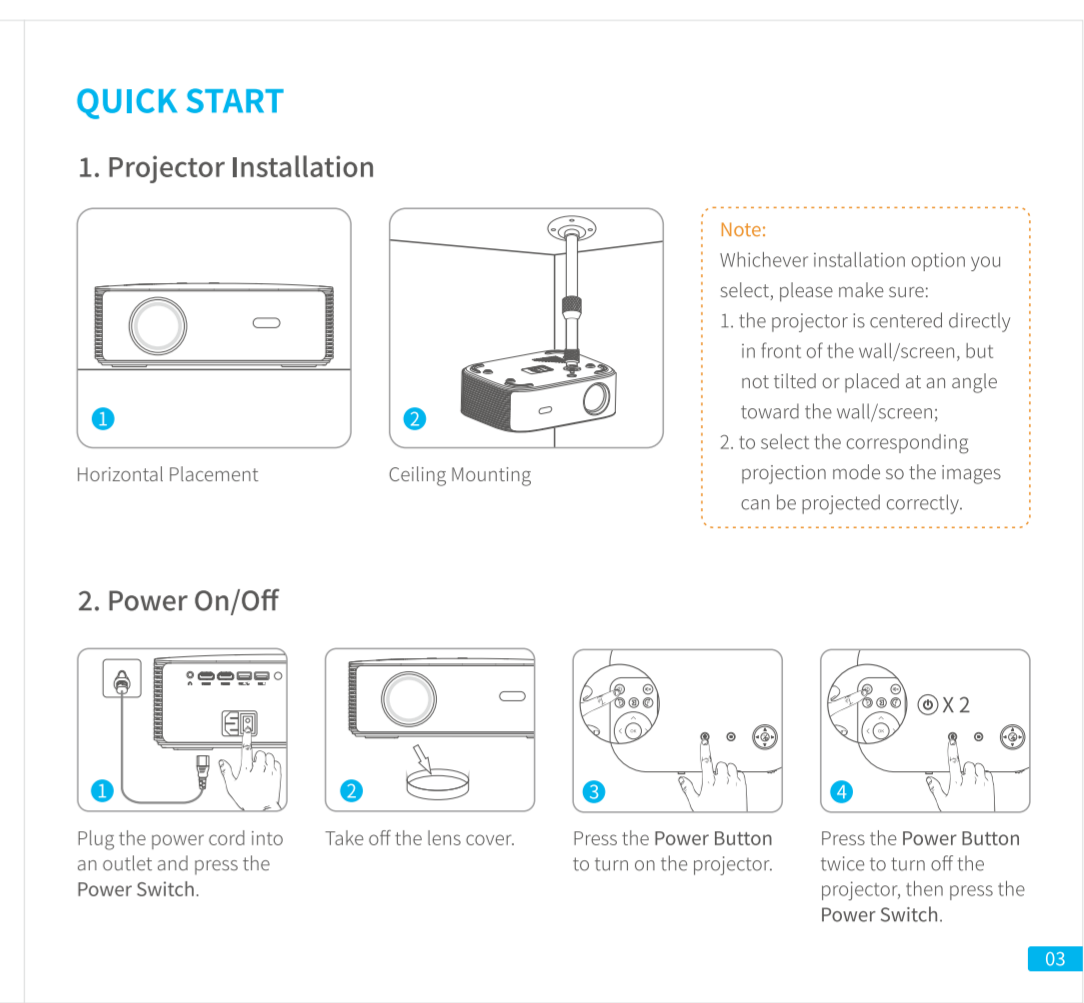
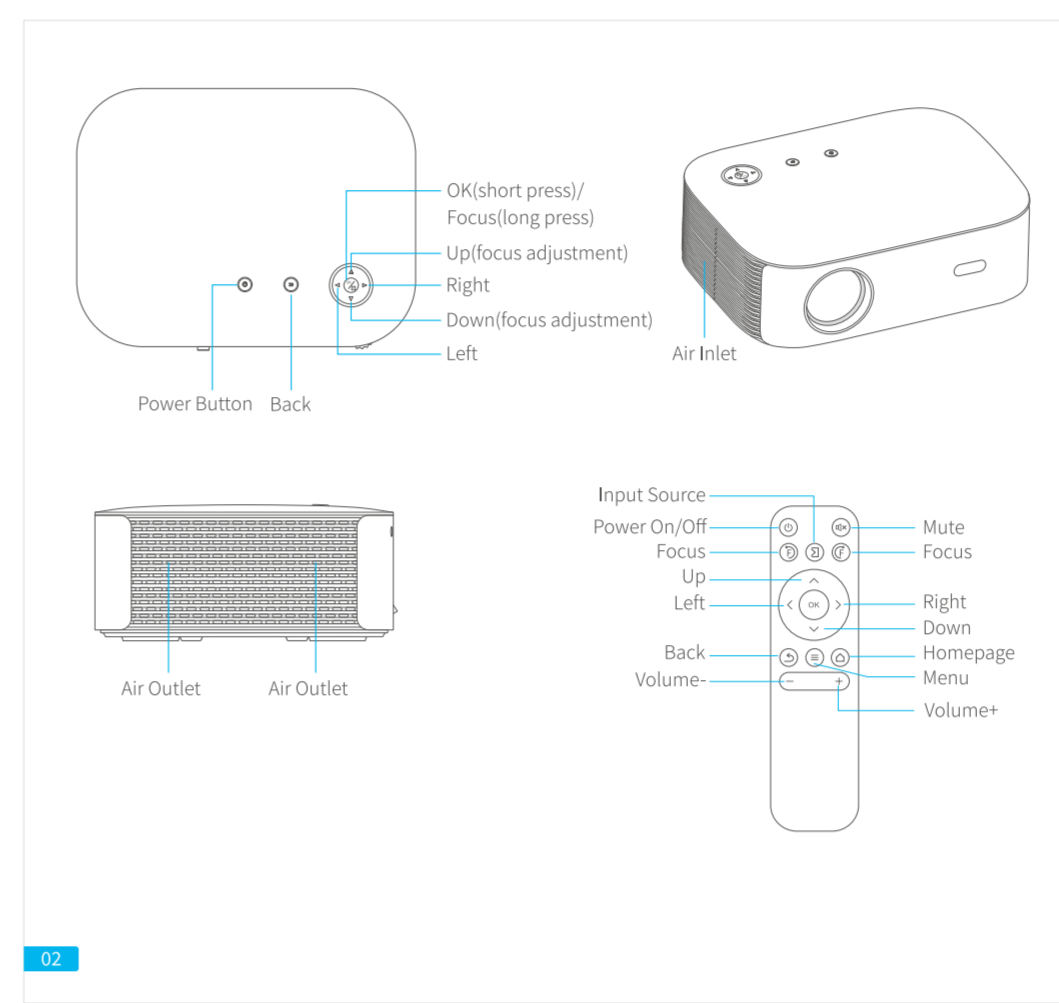
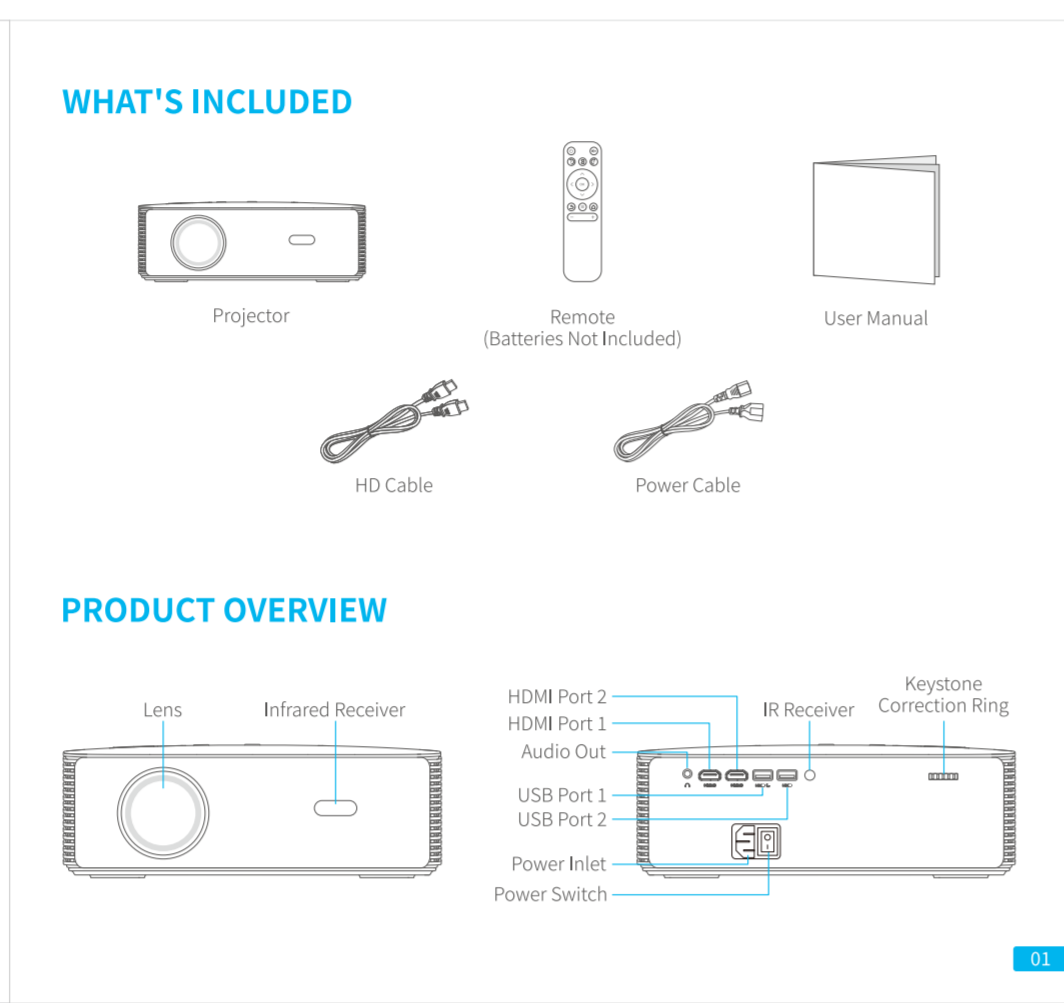


名称	Performance V700W 英语说明书	规格	140x130mm	装订方式	骑马钉
版本号	V1.01	材质	封面157g铜版纸,内页128g铜版纸	设计师	MFL
变更记录					
备注	此文档仅归深圳万拓科技创新有限公司所有,请勿随意使用				



CONTENTS

- WHAT'S INCLUDED 01
- PRODUCT OVERVIEW 01
- QUICK START 03
- PROJECTOR CONNECTION AND INPUT SOURCE 05
- SCREEN MIRRORING 08
 - For iOS System 08
 - For Android System 11
 - For Windows 10 System 12
- SCREEN CASTING 14
- BLUETOOTH CONNECTION 15
- SETTINGS 17
- PROJECTION DISTANCE & SIZE 18
- SPECIFICATION 18
- TROUBLESHOOTING GUIDE 19



FCC warning statements:

This equipment has been tested and found to comply with the limits for a Class B digital device, pursuant to part 15 of the FCC Rules. These limits are designed to provide reasonable protection against harmful interference in a residential installation. This equipment generates, uses and can radiate radio frequency energy and, if not installed and used in accordance with the instructions, may cause harmful interference to radio communications. However, there is no guarantee that interference will not occur in a particular installation. If this equipment does cause harmful interference to radio or television reception, which can be determined by turning the equipment off and on, the user is encouraged to try to correct the interference by one or more of the following measures:

- Reorient or relocate the receiving antenna.
- Increase the separation between the equipment and receiver.
- Connect the equipment into an outlet on a circuit different from that to which the receiver is connected.
- Consult the dealer or an experienced radio/TV technician for help.

Caution: Any changes or modifications to this device not explicitly approved by manufacturer could void your authority to operate this equipment.

This device complies with part 15 of the FCC Rules. Operation is subject to the following two conditions: (1) This device may not cause harmful interference, and (2) this device must accept any interference received, including interference that may cause undesired operation.

The device has been evaluated to meet general RF exposure requirement This equipment complies with FCC radiation exposure limits set forth for an uncontrolled environment.

This equipment should be installed and operated with minimum distance 0.5cm between the radiator & your body.