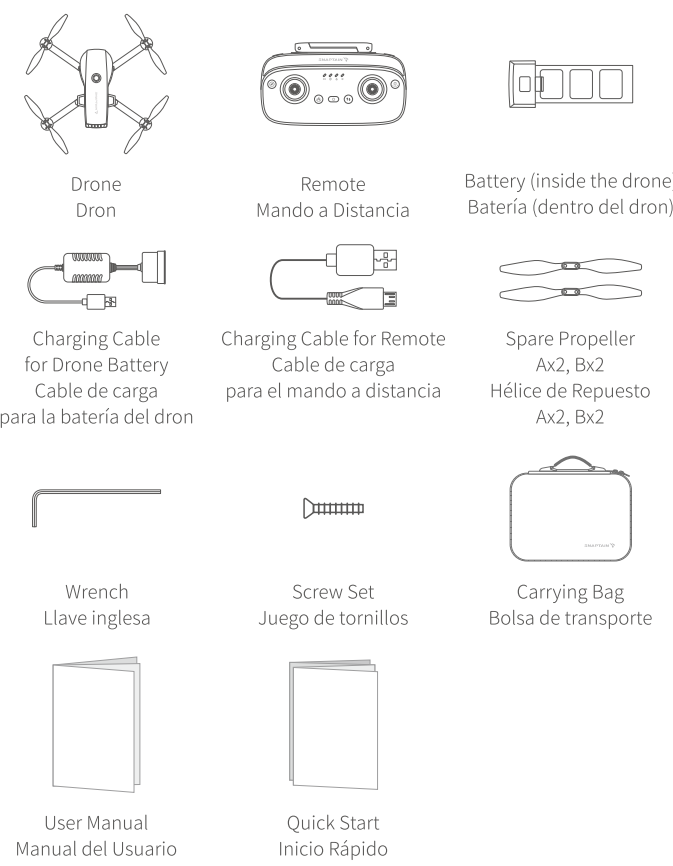


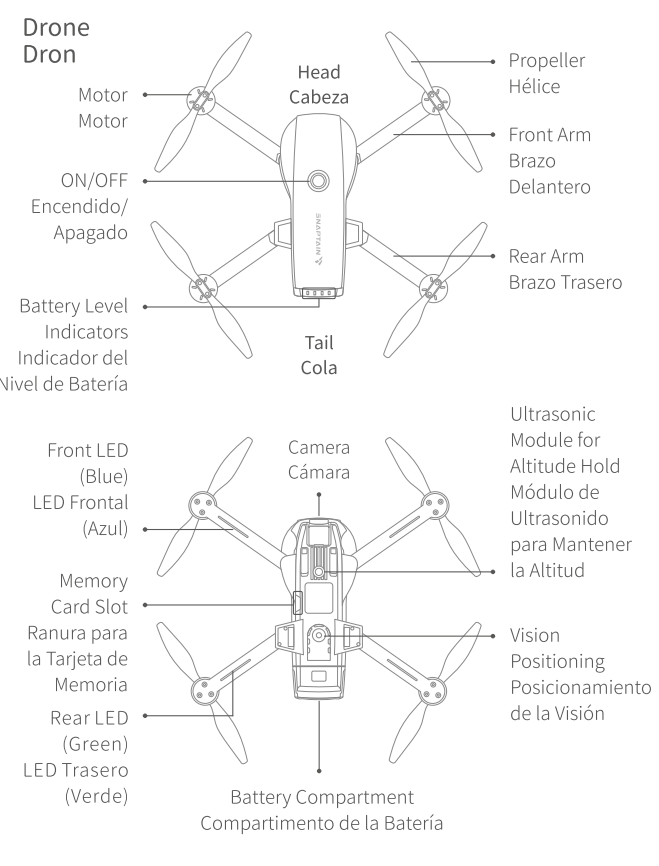
SP7100
FOLDABLE GPS DRONE

QUICK START

PACKING LIST
CONTENIDO DEL PAQUETE

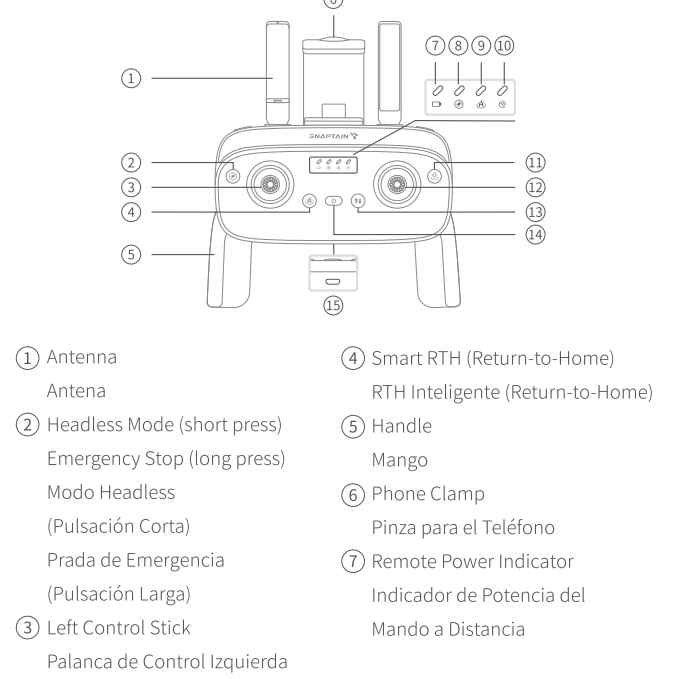


PRODUCT OVERVIEW
DESCRIPCIÓN DEL PRODUCTO

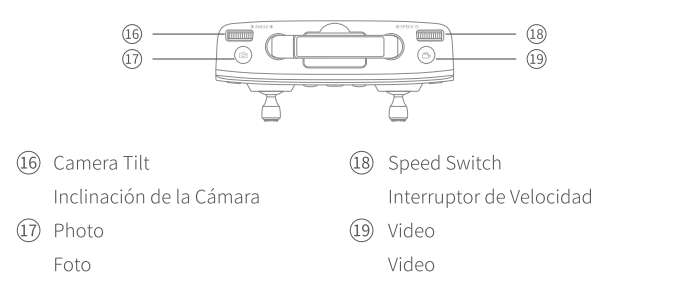


Notes:
 * Remove the protective film from the camera.
 * Please do not manually adjust the camera to avoid damage to it.
Notas:
 * Retire la lámina protectora de la cámara.
 * Por favor, no ajuste la cámara manualmente para evitar que se dañe.

Remote
Mando a Distancia



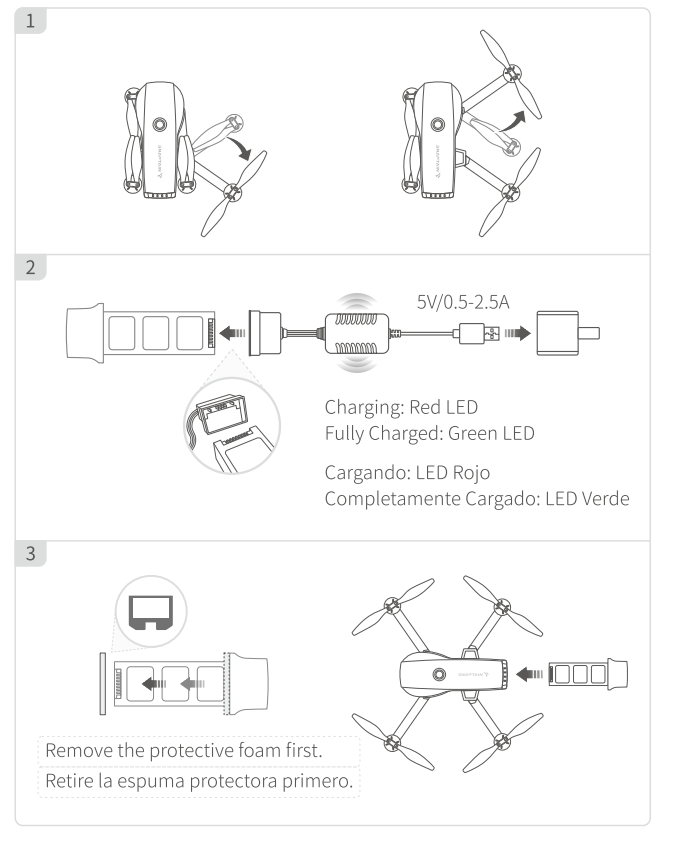
- ⑧ Headless Mode Indicator
Indicador de Modo Headless
- ⑨ RTH Indicator
Indicador RTH
- ⑩ GPS Mode Indicator
Indicador del Modo GPS
- ⑪ GPS Mode On/Off (long press)
Modo GPS On/Off (Pulsación Larga)
- ⑫ Right Control Stick
Palanca de Control Derecha
- ⑬ One Key Take-off/Landing
Despegue/Aterrizaje con una Sola Tecla
- ⑭ ON/OFF
Encendido/Apagado
- ⑮ Charging Port
Puerto de Carga



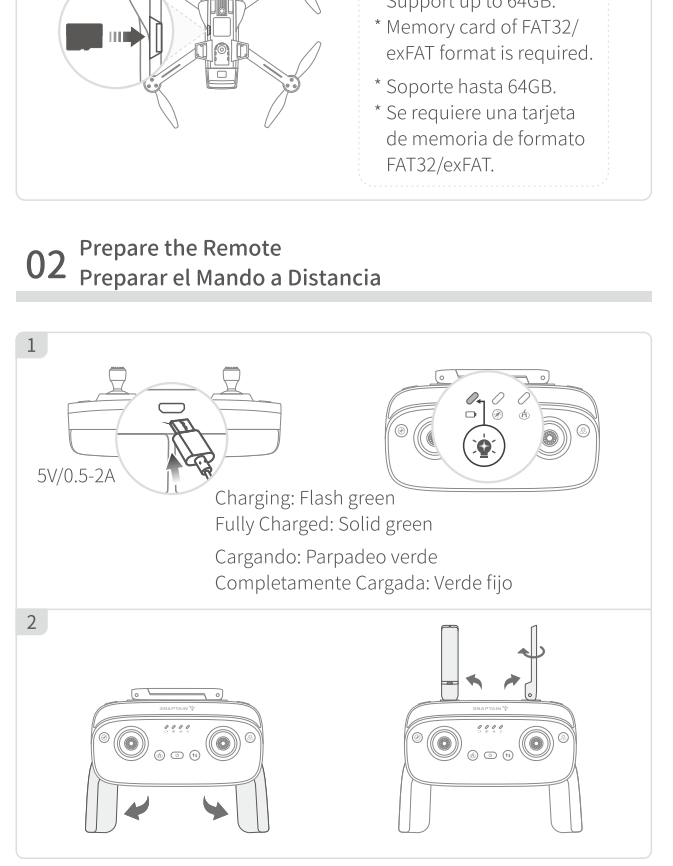
GET STARTED
CÓMO EMPEZAR

Please fly the drone outdoors where GPS signal is strong.
Vuele el dron al aire libre donde la señal del GPS sea fuerte.

01 Prepare the Drone
Preparar el Dron



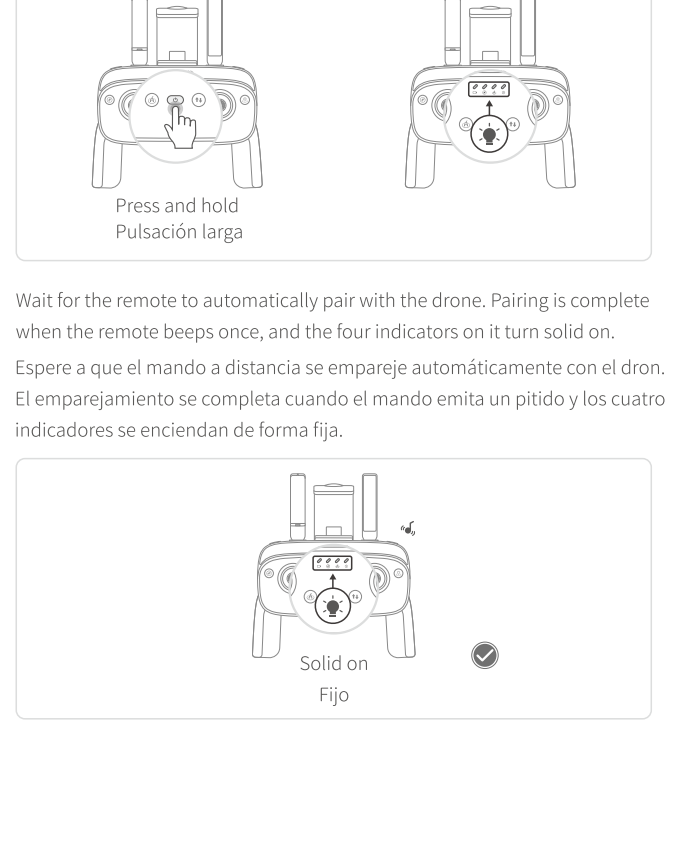
02 Prepare the Remote
Preparar el Mando a Distancia



03 Pair the Remote with the Drone
Emparejar el Mando con el Dron



04 Turn on the remote.
Encienda el mando a distancia.

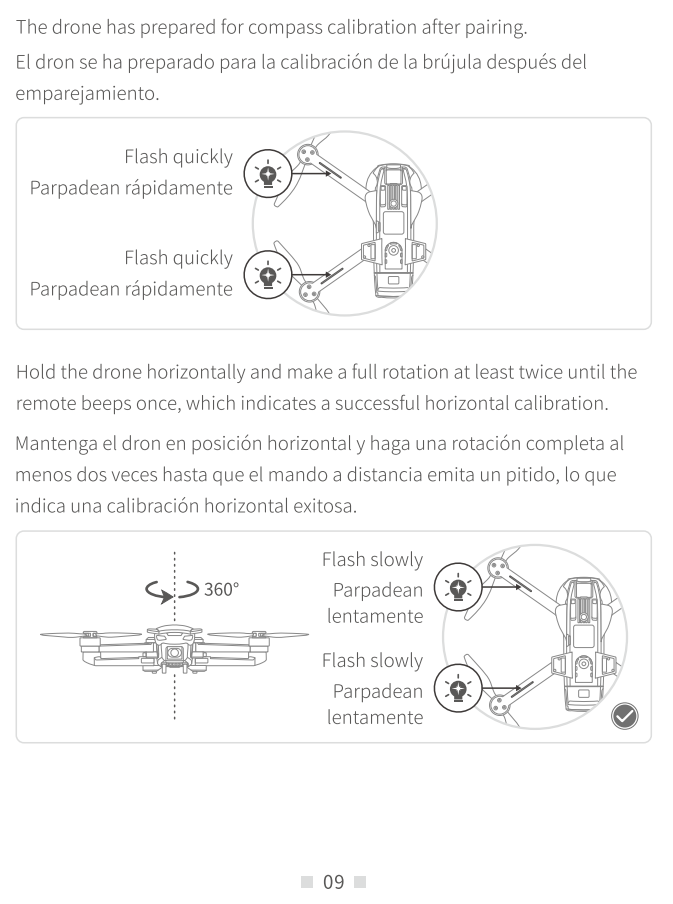


Tutorial Video/Videotutorial

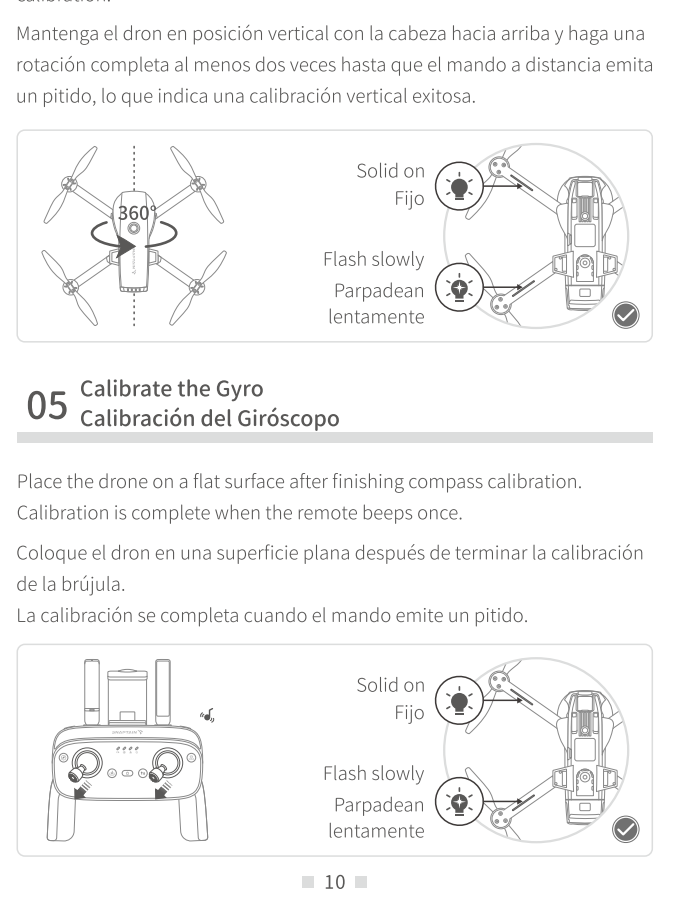
SNAPTAIN SUPPORT

- US support@snaptain.com
- CA support@snaptain.com
- UK support.uk@snaptain.com
- ES support.es@snaptain.com

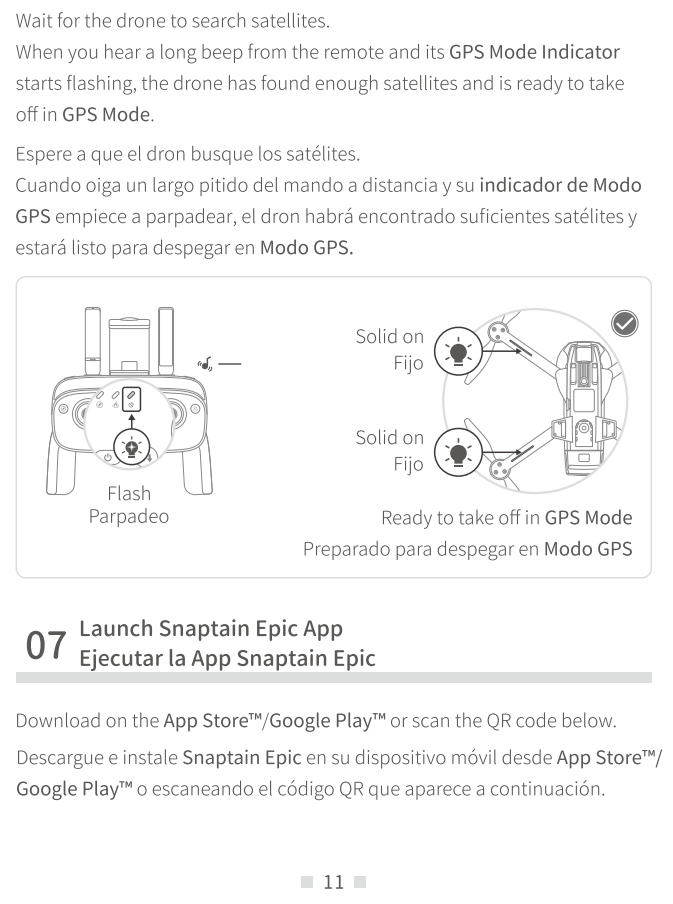
04 Calibrate the Compass
Calibración de la Brújula



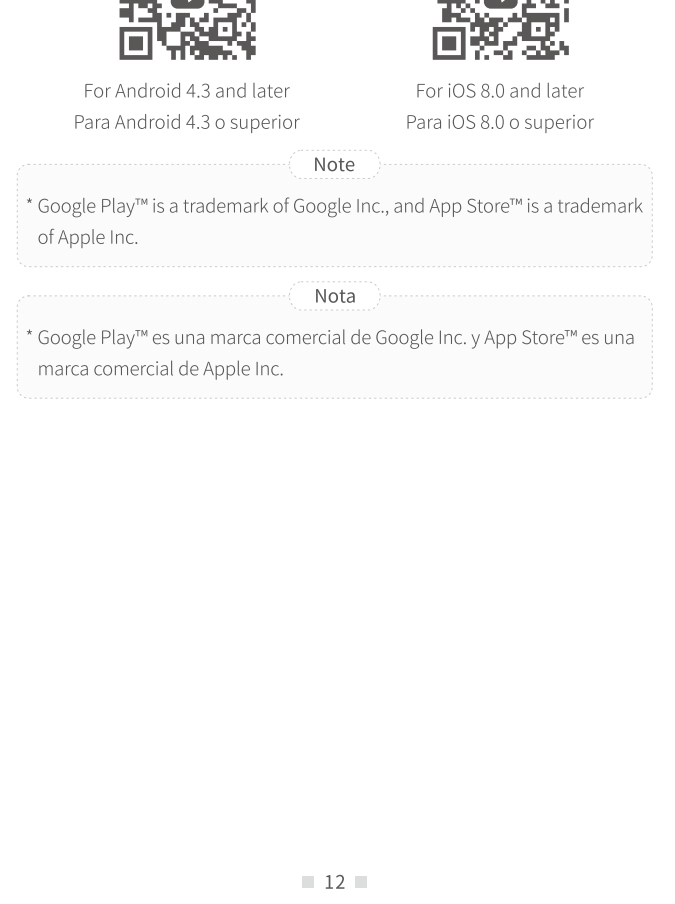
05 Calibrate the Gyro
Calibración del Giróscopo



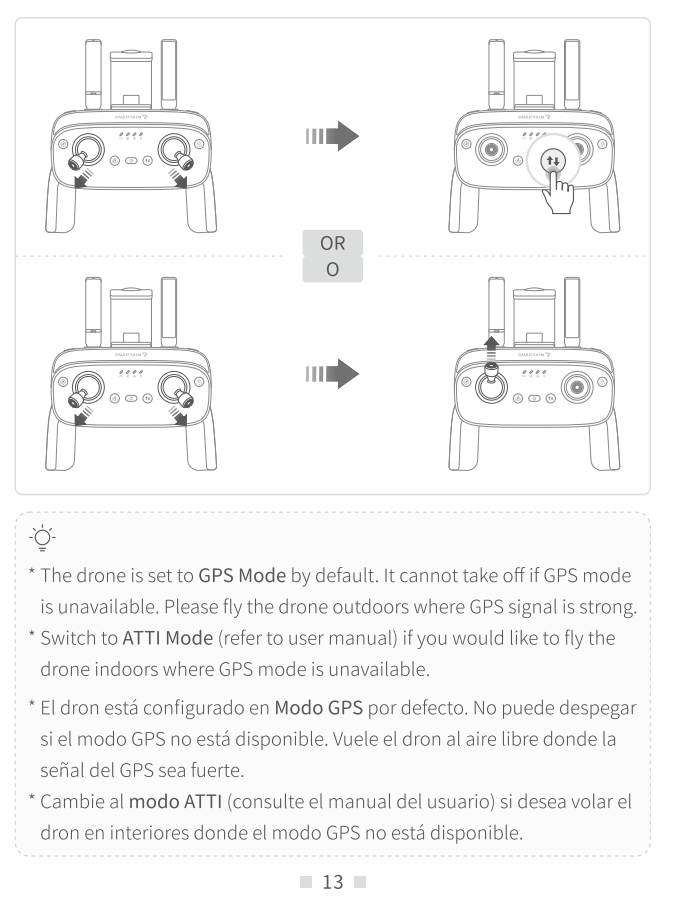
06 Search GPS Satellites
Búsqueda de Satélites GPS



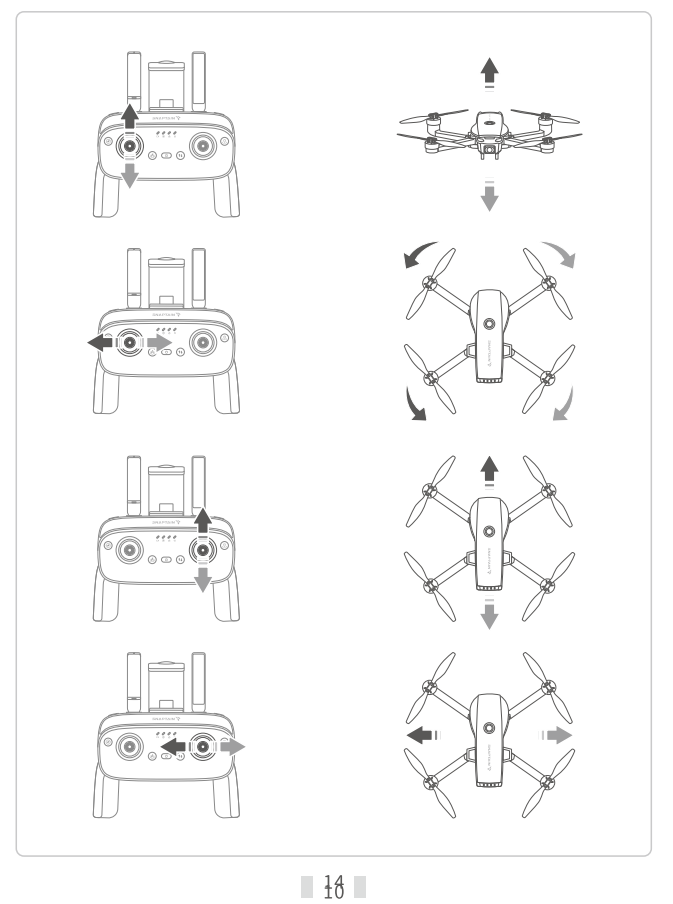
07 Launch Snaptain Epic App
Ejecutar la App Snaptain Epic



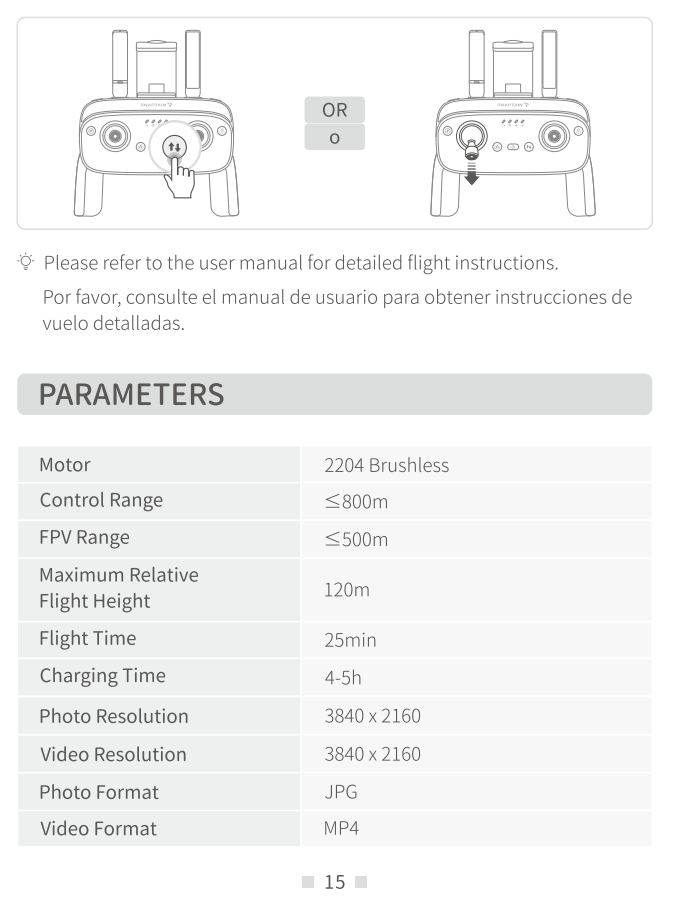
08 Take-off
Despegue



09 Flight Directions
Direcciones de Vuelo



10 Landing
Aterrizaje



PARAMÉTROS

Motor	2204 Brushless
Rango de control	≤800m
Rango de FPV	≤500m
Altura relativa máxima del vuelo	120m
Tiempo de vuelo	25 minutos
Tiempo de carga	4-5 horas
Resolución de la foto	3840 x 2160
Resolución de video	3840 x 2160
Formato de foto	JPG
Formato de video	MP4
Inclinación de la cámara	90°
Almacenamiento	Guardar en el dispositivo móvil y en la tarjeta de memoria (soporta hasta 64G)

FCC Caution:
 Any Changes or modifications not expressly approved by the party responsible for compliance could void the user's authority to operate the equipment.
 This device complies with part 15 of the FCC Rules. Operation is subject to the following two conditions: (1) This device may not cause harmful interference, and (2) this device must accept any interference received, including interference that may cause undesired operation.
IMPORTANT NOTE:
 Note: This equipment has been tested and found to comply with the limits for a Class B digital device, pursuant to part 15 of the FCC Rules. These limits are designed to provide reasonable protection against harmful interference in a residential installation. This equipment generates, uses and can radiate radio frequency energy and, if not installed and used in accordance with the instructions, may cause harmful interference to radio communications. However, there is no guarantee that interference will not occur in a particular installation. If this equipment does cause harmful interference to radio or television reception, which can be determined by turning the equipment off and on, the user is encouraged to try to correct the interference by one or more of the following measures:
 —Reorient or relocate the receiving antenna.
 —Increase the separation between the equipment and receiver.
 —Connect the equipment into an outlet on a circuit different from that to which the receiver is connected.
 —Consult the dealer or an experienced radio/TV technician for help.
FCC Radiation Exposure Statement:
 This equipment complies with FCC radiation exposure limits set forth for an uncontrolled environment. This equipment should be installed and operated with minimum distance 20cm from your body.
FCC Radiation Exposure Statement:
 This equipment complies with FCC radiation exposure limits set forth for an uncontrolled environment. (remote control)