

Red Point Information Technology (Shenzhen) Co., Ltd.

Specification description: 5.8G copper tube antenna 1.13 black wire, total
length 82mm first generation terminal

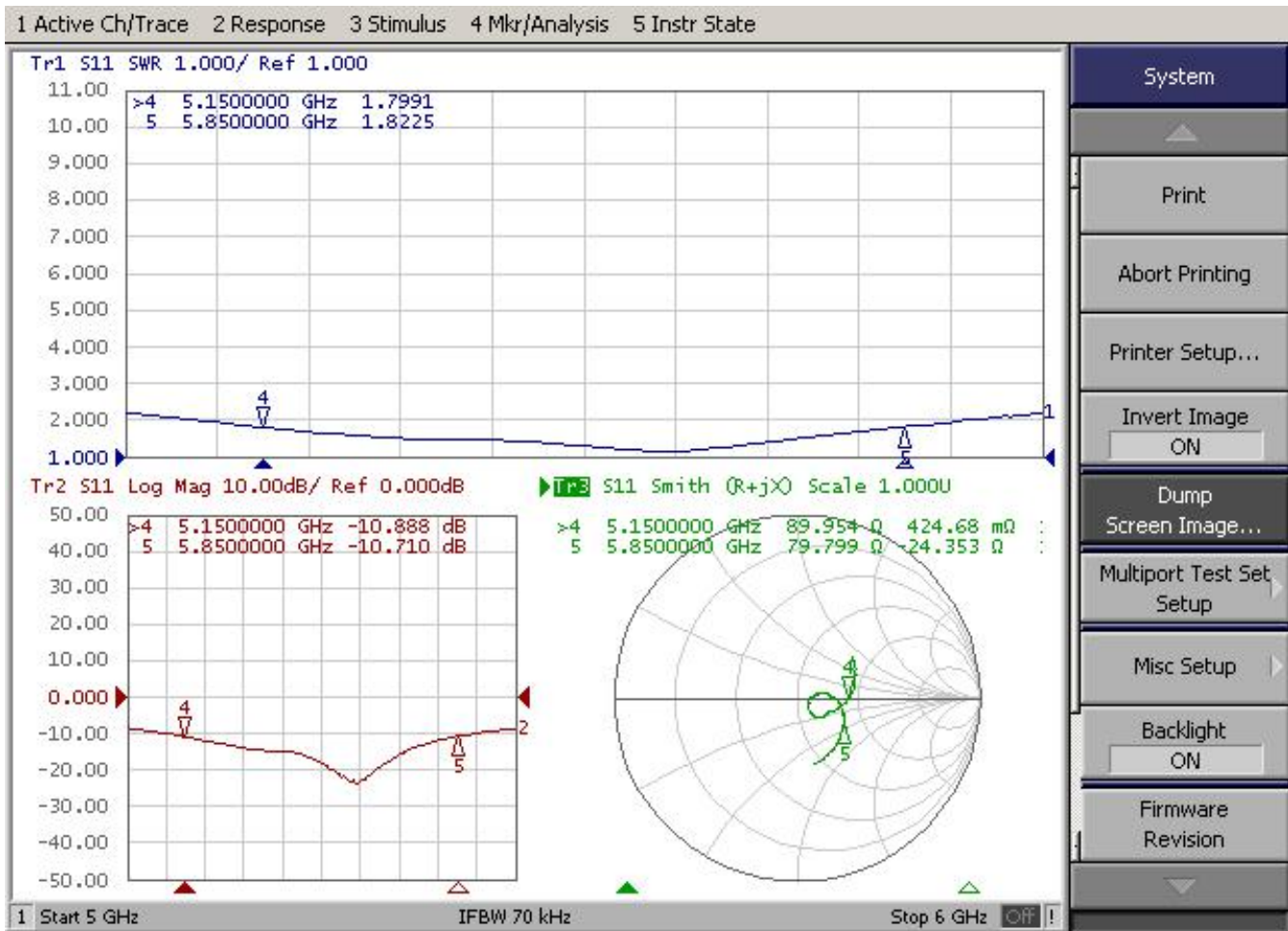
Model: DR-SF270C

Red Point Information Technology (Shenzhen) Co., Ltd.

Address: Room 302, No. 65, Fumao New Village, Sanlian Community, Longhua Street,
Longhua District, Shenzhen City

Passive performance test parameters

Frequency(MHz)	5150	5850
VSWR	1.7991	1.8225



System

Print

Abort Printing

Printer Setup...

Invert Image ON

Dump Screen Image...

Multiport Test Set Setup

Misc Setup

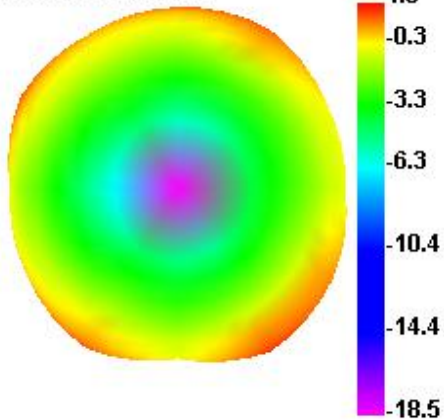
Backlight ON

Firmware Revision

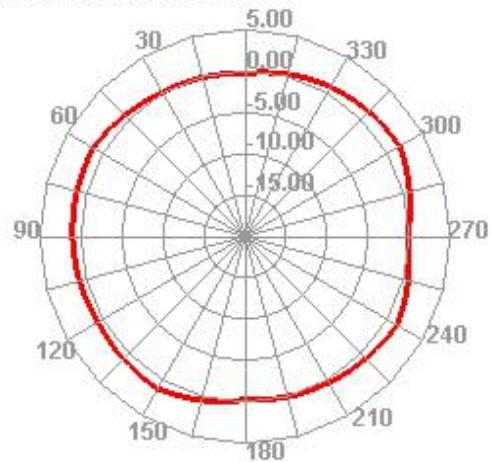
2D, 3D performance graphs

Freq (MHz)	Effi (%)	Effi (dB)	Gain (dBi)
5150	73.9	-1.31	1.76
5220	69.12	-1.6	1.4
5290	64.32	-1.92	1.05
5360	64.59	-1.9	0.98
5430	73.62	-1.33	1.32
5500	66.44	-1.78	0.88
5570	67.85	-1.68	1.11
5640	61.96	-2.08	1.02
5710	60.83	-2.16	1.05
5780	61.95	-2.45	1.35
5850	62.14	-2.07	1.23

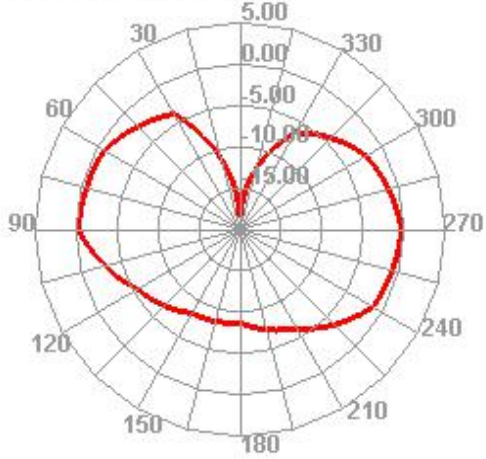
5150.000MHz



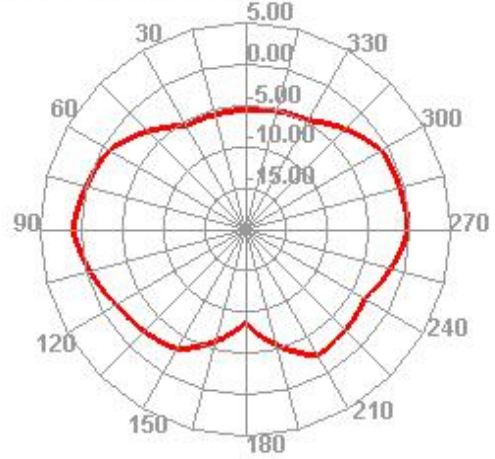
5150.000MHz H



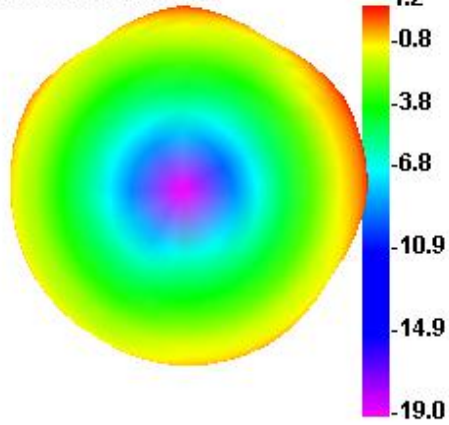
5150.000MHz E1



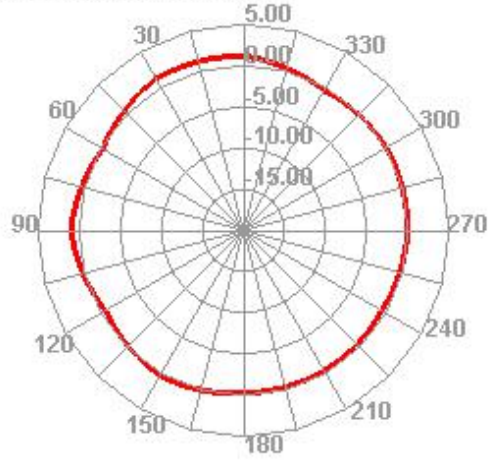
5150.000MHz E2



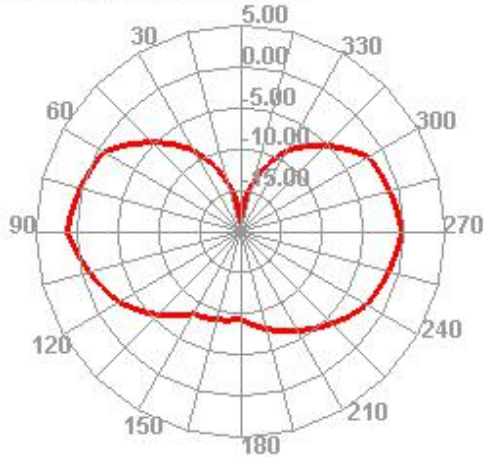
5850.000MHz



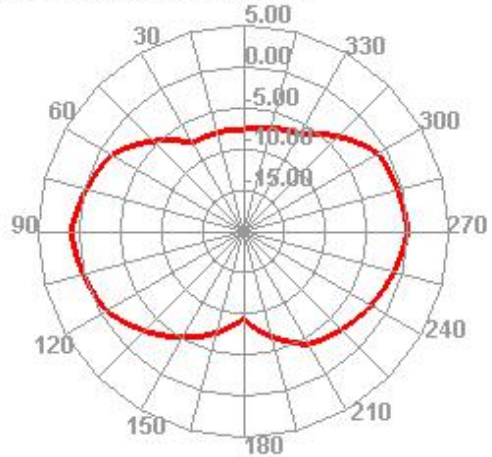
5850.000MHz H



5850.000MHz E1



5850.000MHz E2



Electrical performance parameters

名称 项目	5G 天线	Name	5G Antenna
频率范围 (MHz)	5150~5850	Frequency (MHz)	5150~5850
带宽 (MHz)	700	Bandwidth (MHz)	700
极化方式	线极化	Polarization Type	linear polarization
天线增益 (dBi)	1.76	Gain (dBi)	1.76
辐射方向	全向	Radiation Pattern	Omni directional
电压驻波比	≤ 2.5	VSWR	≤ 2.5
输入阻抗 (Ω)	50	Input Impedance (Ω)	50
电缆线长度 (mm)	82	Cable length (mm)	82
电缆线颜色	黑色	Cable Colour	Black
接口形式	IPEX	Connector Type	IPEX MHF1
工作温度 ($^{\circ}\text{C}$)	-40~+85	Operation temperature ($^{\circ}\text{C}$)	-40~+85
存储温度 ($^{\circ}\text{C}$)	-40~+85	Store temperat ($^{\circ}\text{C}$)	-40~+85