

深圳旭航通讯科技有限公司

Shenzhen Xuhang Communication
Technology Co., Ltd

规格承认书

Specification acknowledgement

客户 CUSTOMER	
客户料号 CUSTOMER NO.	LS35-2.4G
供方品名 PART NAME	WIFI 天线 WIFI ANT
规格名称 SUPPLIER NO.	XH230056 (L=150mm)

客户确认 CUSTOMER APPROVED BY		
检验 APPROVAL	审核 CHIEF	批准 SUPERVISOR

设计 DESIGN	审核 CHECK	批准 APPROVAL
Luo	Robert	SHANG

Date: April 14, 2023

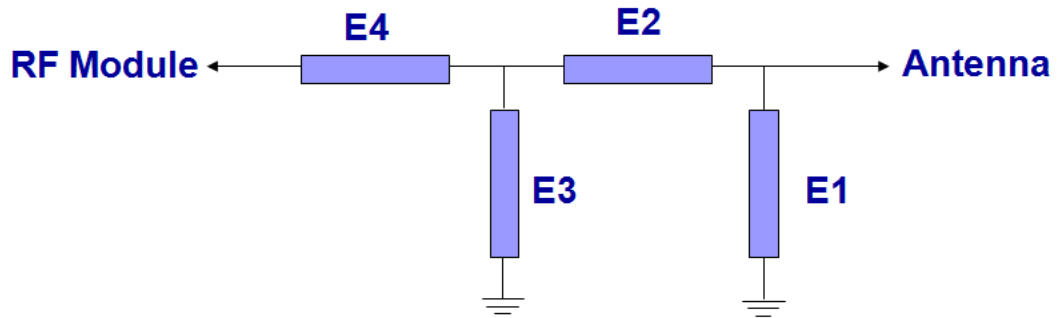
电性测试报告

TEST REPORTS

频率 Frequency	WIFI(2400~2500MHz)
阻抗 Impedance	50 Ohm Nominal
驻波比 V.S.W.R	≤2.0
回波损耗 Return Loss	-10dB Max
辐射 Radiation	Omni-directional
增益 Gain(Peak)	3.87dBi
极化方式 Polarization	Linear,Vertical
功率 Admitted Power	1W
连接器 Connector	I-PEX I
Physical Properties	
天线材质 Antenna Material	FPC
线材类型 Cable Type	O.D.1.13mm
工作温度 Operating Temp.	-10-+60℃
存储温度 Storage Temp.	-10-+70℃
线材颜色 Cable Color	Black

匹配电路

Matching Circuits



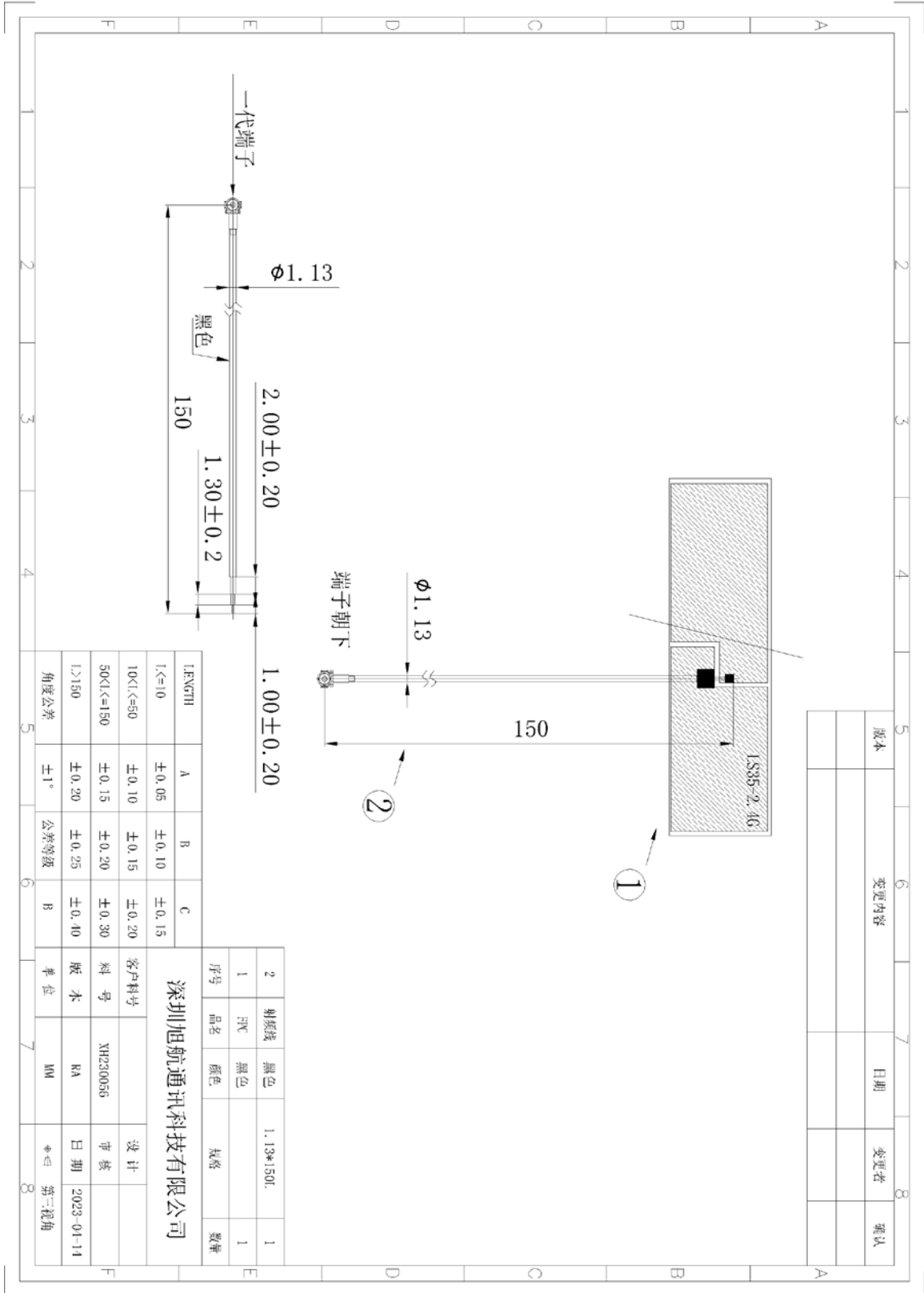
匹配电路

Element	Value	Vender
E1(0402)		
E2(0402)	0Ω	
E3(0402)		
E4(0402)	0Ω	

原匹配电路无修改

The original matching circuit has not been modified

工程图 DRAWING



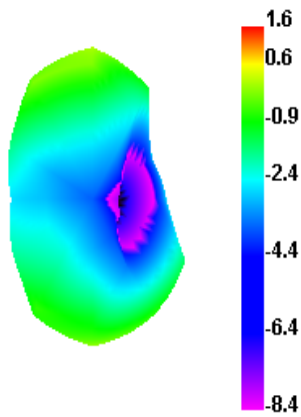
测试数据

Test Data

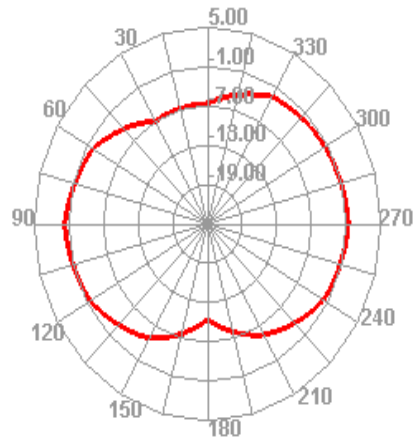
Freq (MHz)	Effi (%)	Gain (dBi)
2400	51.67	3.45
2410	50.24	3.32
2420	55.33	3.87
2430	52.16	3.29
2440	55.7	3.81
2450	52.08	3.09
2460	53.08	3.35
2470	52.87	3.03
2480	54.09	3.24
2490	53.29	3.52
2500	53.15	3.69

3D 方向图

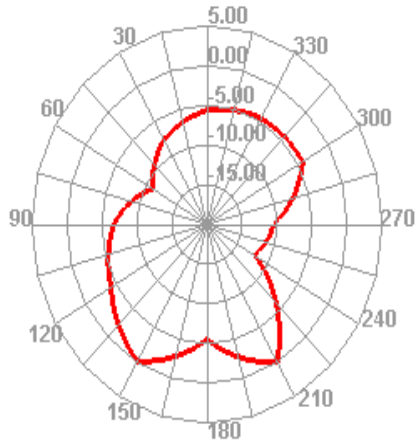
2400.000MHz



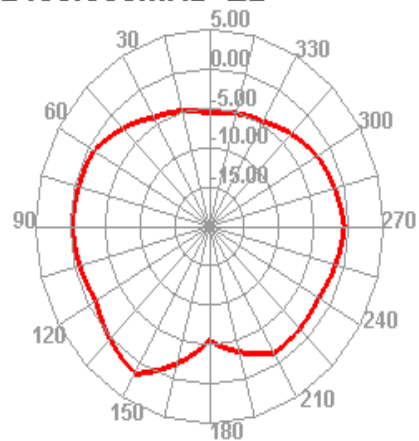
2400.000MHz H



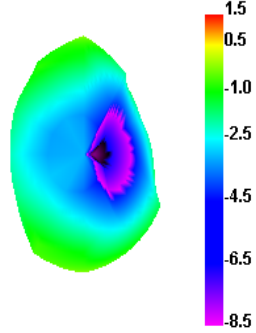
2400.000MHz E1



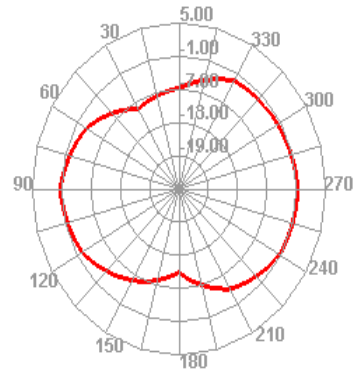
2400.000MHz E2



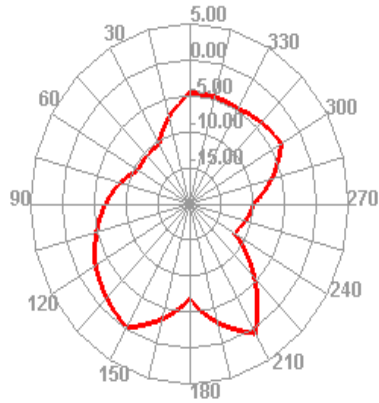
2450.000MHz



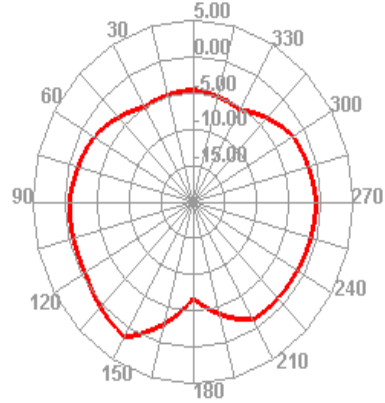
2450.000MHz H



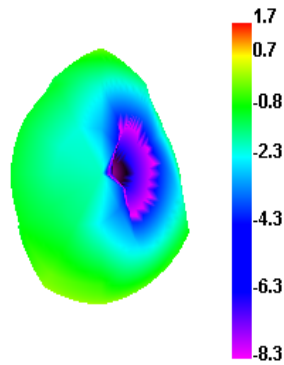
2450.000MHz E1



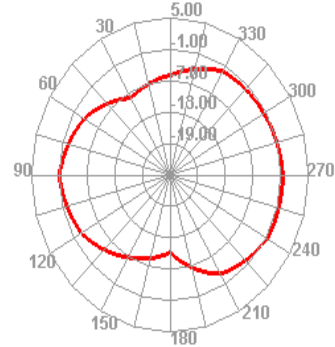
2450.000MHz E2



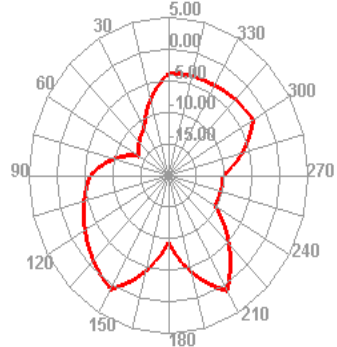
2500.000MHz



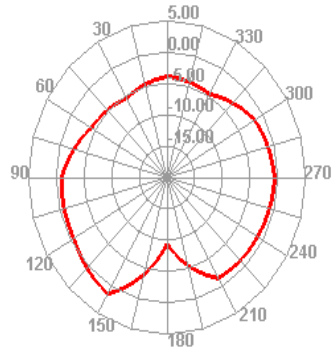
2500.000MHz H



2500.000MHz E1

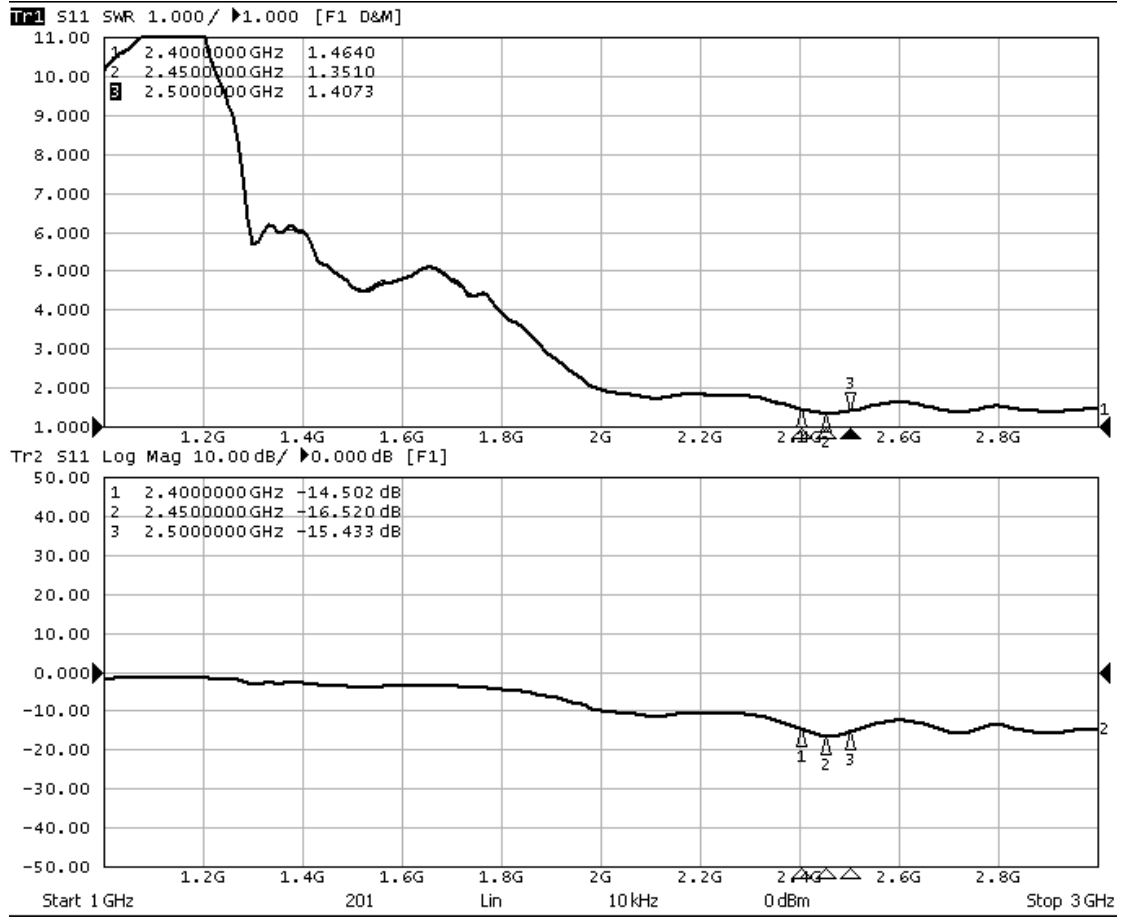


2500.000MHz E2



Passive standing wave

无源驻波



有源测试数据

Application Information	
04Version	5.256.357
TotalTime	6m 18s 36ms
AdditionalInfor	802.11b : 11Mbps

Test	Wifi 2G TRP		
	1	6	11
Result			
Frequency (MHz)	2412	2437	2462
Txp Ave (dBm)	15.2	15.1	16.91

Test	Wifi 2G TIS
	11
Result	
Frequency (MHz)	2462
Sens Ave (dBm)	-86.15

Application Information	
04Version	5.256.357
TotalTime	6m 16s 109ms
AdditionalInfor	802.11g : 54Mbps

Test	Wifi 2G TRP		
	1	6	11
Result			
Frequency (MHz)	2412	2437	2462
Txp Ave (dBm)	13.16	13.67	14.6

Test	Wifi 2G TIS
	11
Result	
Frequency (MHz)	2462
Sens Ave (dBm)	-71.77

Application Information	
04Version	5.256.357
TotalTime	6m 2s 993ms
AdditionalInfor	802.11n : MCS7

Test	Wifi 2G TRP		
	1	6	11
Result			
Frequency (MHz)	2412	2437	2462
Txp Ave (dBm)	13.97	14.5	14.64

Test	Wifi 2G TIS
	11
Result	
Frequency (MHz)	2462
Sens Ave (dBm)	-68.96

天线装配位置

Antenna assembly position

