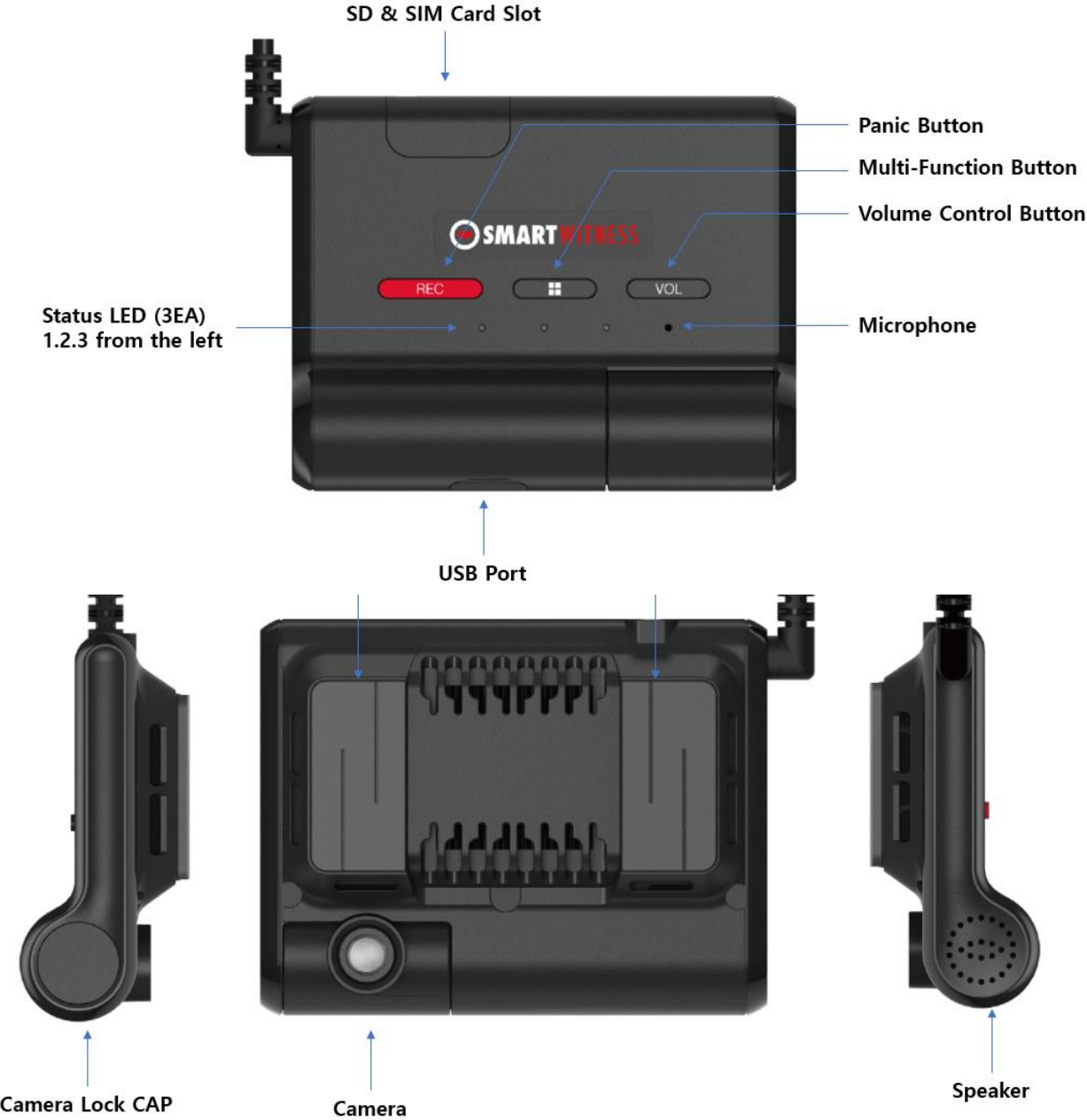


User Manual

User Manual

Version 1.0

1. About Product



2. Product Functions

1) Automatic Booting

Once the AP1 has been wired to your OBD-II port or vehicle power source the AP1 will be boot up automatically. It will take around **55sec.** for the unit to be ready to operate.

2) ADAS Functions

FCW	Forward collision warning system monitors a vehicle's speed, the speed of the vehicle in front of it, and the distance between the vehicles, so that it can provide a warning to the driver if the vehicles get too close, it helps driver to avoid a crash.
FVSA	Notifies the driver if the front vehicle starts to move forward from 0 speed (complete stopped status) and the driver's vehicle is not moving within 2 seconds.
FPW	Notifies the driver when the front vehicle is within detection range. Detection range can be setup on a scale of 1 to 3 (Active from 0 ~ 30km/h) during the calibration. As the level gets higher, you will hear the warning sound earlier.

3) Video Recording

Continuous Record

This is the default mode for recording. In this setting the unit will begin recording after boot up and record the entire time the unit is powered on. The resolution and frame rates can be set as per your requirements.

Event Record

The unit will record when triggered by impact, FCW warning situation or a push of the "Record" button. You can set the record time during the calibration setting mode.

Dual Record

The continuous record file will be stored on "Normal Folder" and the Event record will be stored on the "Event" folder on SD card.

Drive Data

The DRV file will be recorded during the driving even if there are no events or video. The DRV file consist of GPS and G-sensor data. The DRV file overwrites the oldest data. The DRV files will be made every **1~10** minutes.

Time and date

This information will be provided by GPS satellite's automatically.

SD Memory card format

Please format(erase) the SD card using **the server program.**




4) Hotspot

Please press the multi-function button for **3 seconds (Long Press)**.

5) Volume control

Please press the volume button. The volume level is 5 steps and it make loop.

3. LED and Audio Guide

Status/Step			LED			Sound
			1	2	3	
			3 color	Green	Blue	
						
Start-up / On&Off	Booting step1	Before trouble shooting	Flashing (Orange)	Off	Off	
	Booting step2	Trouble shooting	Flashing (Orange)	Flashing	Off	
	Booting step3	Initializing modem	Flashing (Orange)	Flashing	Flashing	
	Booting finished		On	On	On	Booting Melody
	Power ON		Normal : On (Green) Initial state : On (Orange)	Off	Off	
	Power Off / finished		Off	Off	Off	
Recording	Continuous Record	Recording	-	On	-	
	Event Record	G-Sensor Recording	-	On	-	
		FCW Recording	-	On	-	
		User Recording	-	On	-	
	Record Error	SD Error, No SD, Write Fail	-	3 times Fast flashing every 10 secs.	-	
	No Record	Recording Off	-	Off	-	
	SD Format		-	Fast flashing until the process finish	-	

ADAS	FCW Warning	-	-	-	Warning sounds
	FPW Warning	-	-	-	Warning sounds
	FVSA Alert	-	-	-	Warning sounds
Communication	3G/4G Network Device Ready	-	-	2 times flashing every 40sec.	
	3G/4G Network Device Connected	-	-	ON	
	3G/4G Network Device Error, SIM Error	-	-	3 times Fast flashing every 10 secs.	
	Data Network Connection Error	-	-	3 times Slow flashing every 10 secs.	
Status	G-Sensor Calibration	Slow flashing until the calibration finished (Orange)	-	-	Beep sounds
	Setting Mode (ADAS, Recording etc.)	Red/Green LED cross flashing during until the setting mode finished			Setting Sounds
	Firmware Upgrade	Fast flashing until the firmware update finished (Green)	-	-	
	GPS Error	3 times Fast flashing every 10 secs. (Orange)	-	-	
	Camera Error	ON (Red)	-	-	
	CAN Error	3 times Fast flashing every 10 secs. (Green)	-	-	

***flashing (On and off): 500msec on and 500msec off**

***Fast flashing (On and off): 100msec on and 100msec off**

***Slow flashing (On and off): 1,000msec on and 1,000msec off**

4. Technical Support & Warranty

1) Technical Support

For technical Support, please contact your local distributor or visit support.smartwitness.com

2) Limited Warranty

This product is supplied with 2 years warranty. The Warranty excludes products that have been misused (including accidental damage) and damage caused by normal wear and tear. In the unlikely event that you encounter a problem with this product, it should be returned to the place of purchase.

FCC Regulations:

This device complies with part 15 of the FCC Rules. Operation is subject to the following two conditions: (1) This device may not cause harmful interference, and (2) This device must accept any interference received, including interference that may cause undesired operation.

This device has been tested and found to comply with the limits for a Class B digital device , pursuant to Part 15 of the FCC Rules. These limits are designed to provide reasonable protection against harmful interference in a residential installation. This equipment generates, uses and can radiated radio frequency energy and, if not installed and used in accordance with the instructions, may cause harmful interference to radio communications. However, there is no guarantee that interference will not occur in a particular installation If this equipment does cause harmful interference to radio or television reception, which can be determined by turning the equipment off and on, the user is encouraged to try to correct the interference by one or more of the following measures:

- Reorient or relocate the receiving antenna.
- Increase the separation between the equipment and receiver.
- Connect the equipment into an outlet on a circuit different from that to which the receiver is connected.
- Consult the dealer or an experienced radio/TV technician for help.

Caution: Changes or modifications not expressly approved by the party responsible for compliance could void the user's authority to operate the equipment.

RF Exposure Information

This device complies with FCC radiation exposure limits set forth for an uncontrolled environment. In order to avoid the possibility of exceeding the FCC radio frequency exposure limits, human proximity to the antenna shall not be less than 20cm (8 inches) during normal operation.

ISED Notice

This device complies with Innovation, Science and Economic Development Canada license-exempt RSS standard(s). Operation is subject to the following two conditions:

- (1) this device may not cause interference, and
- (2) this device must accept any interference, including interference that may cause undesired operation of the device.

Le présent appareil est conforme aux CNR Innovation, Sciences et Développement économique Canada applicables aux appareils radio exempts de licence. L'exploitation est autorisée aux deux conditions suivantes:

- (1) l'appareil ne doit pas produire de brouillage, et
- (2) l'utilisateur de l'appareil doit accepter tout brouillage radioélectrique subi, même si le brouillage est susceptible d'en

This Class B digital apparatus complies with Canadian ICES-003.

Cet appareil numérique de la classe B est conforme à la norme NMB-003 du Canada.

ISED Radiation Exposure Statement

This device complies with RSS-102 radiation exposure limits set forth for an uncontrolled environment. In order to avoid the possibility of exceeding the ISED radio frequency exposure limits, human proximity to the antenna shall not be less than 20cm (8 inches) during normal operation.

Cet appareil est conforme aux limites d'exposition aux rayonnements de la CNR-102 définies pour un environnement non contrôlé. Afin d'éviter la possibilité de dépasser les limites d'exposition aux fréquences radio de la CNR-102, la proximité humaine à l'antenne ne doit pas être inférieure à 20 cm (8 pouces) pendant le fonctionnement normal.