

NQI-A338-R Antenna Specification

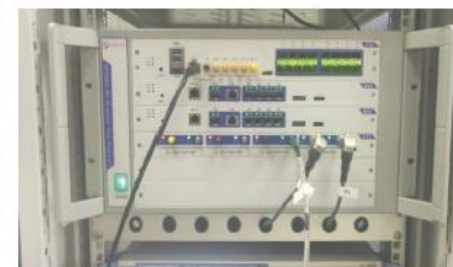
Tested Products.

- Antenna 1: FPC antenna.
 - Frequency =2402MHz
 - Frequency =2404MHz
 - Frequency =2440MHz
 - Frequency =2441MHz
 - Frequency =2472MHz
 - Frequency =2480MHz

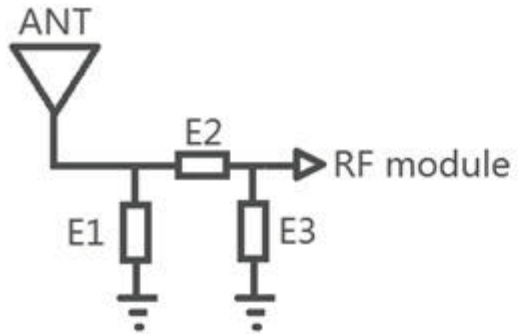
— Samples and instructions



Frequency:	2400-2500MHz
Gain	-0.86dBi
Antenna type	FPC
impedance	50 ohn



二. Antenna Matching Network



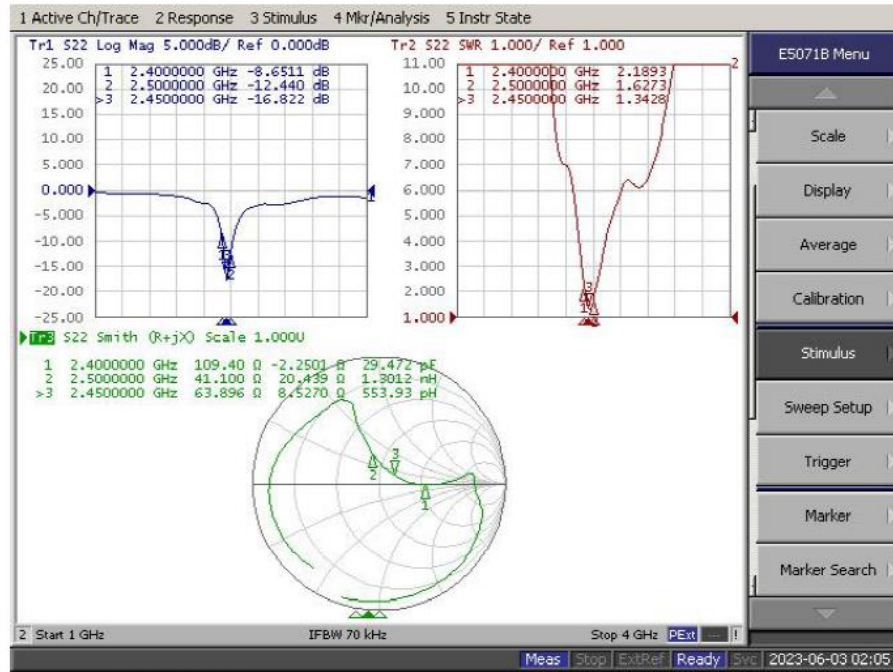
Element	
E1(0201)	NF
E2(0201)	0 Ω
E3(0201)	NF

三. Antenna assembly and environmental treatment



四. Antenna electrical performance test data

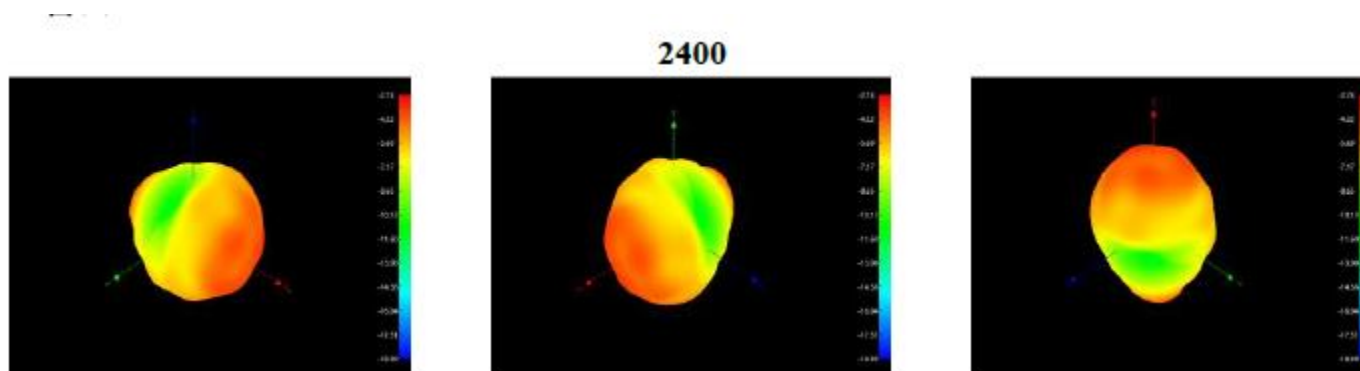
4.1 Smith Chart



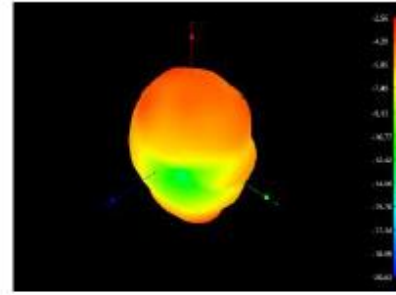
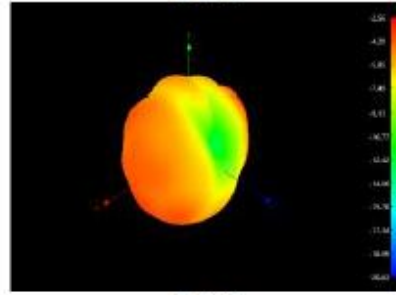
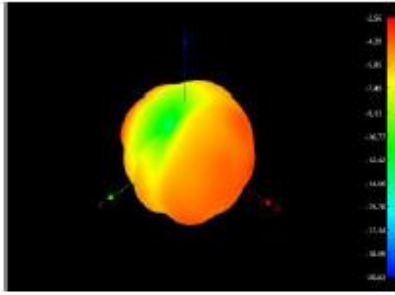
4.2 Antenna Gain

R 自由空间			R 头模		
Freq (MHz)	Effi (%)	Gain (dBi)	Freq (MHz)	Effi (%)	Gain (dBi)
2400	23.75	-1.57	2400	4.82	-6.47
2420	25.02	-1.37	2420	4.96	-6.76
2440	26.27	-1.89	2440	5.37	-6.89
2460	27.19	-1.67	2460	5.68	-6.58
2480	27.27	-0.86	2480	5.49	-5.78
2500	26.85	-1.77	2500	5.78	-6.79

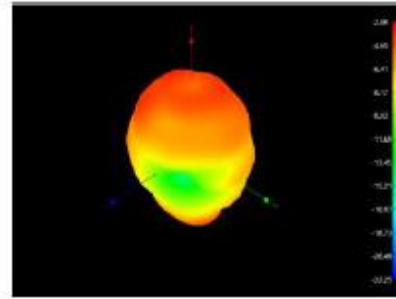
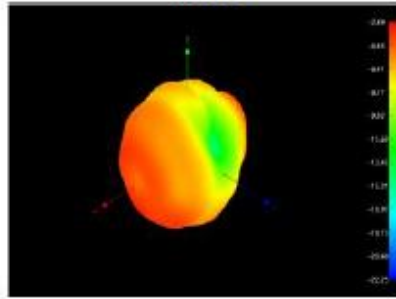
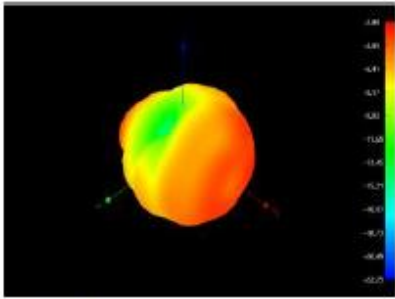
4.3 Radiation direction map and apple field strength map



2450

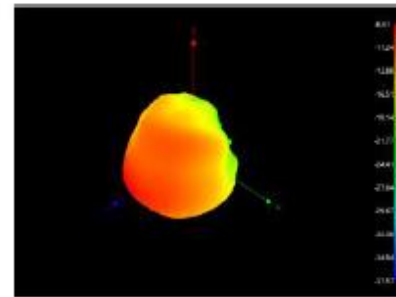
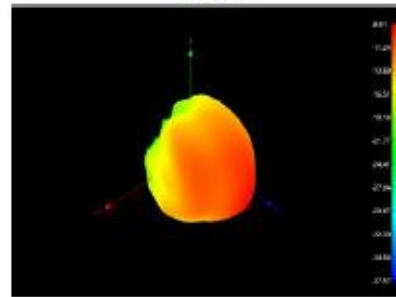
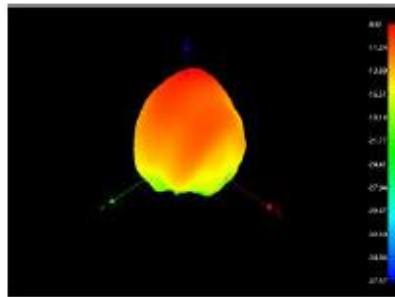


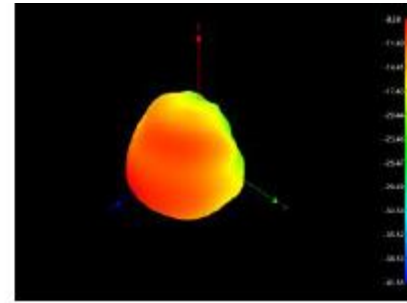
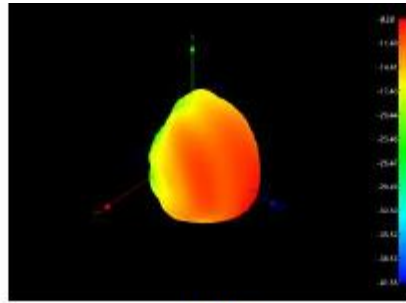
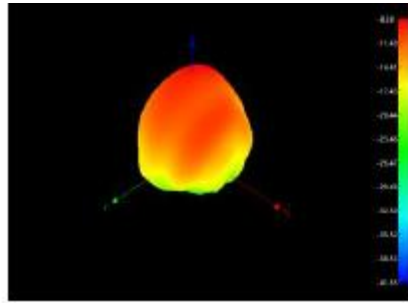
2500



R 头模

2400





2500

