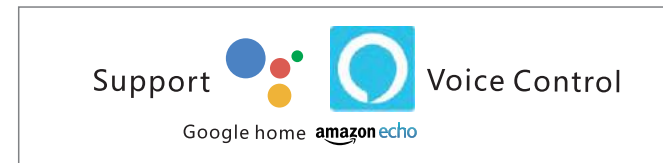
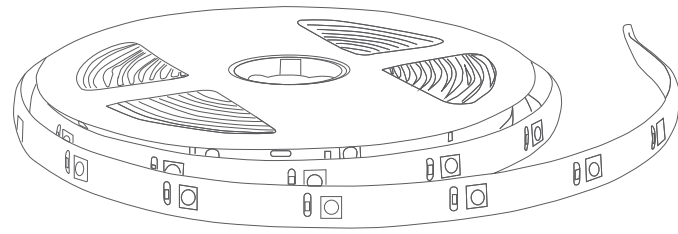


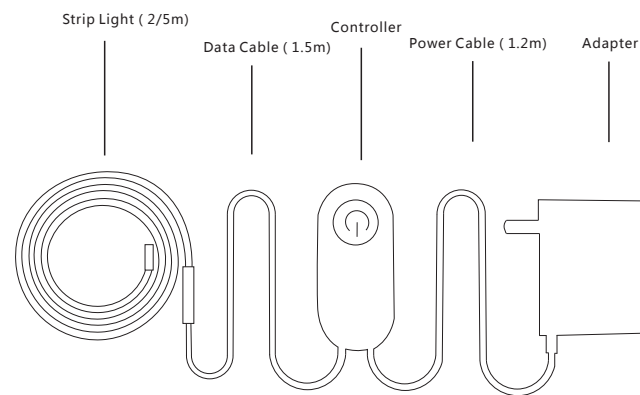
# Smart Strip Light User Manual (VER:1.0)

Model NO.: S50123010-IP65RGBW  
S50123010-IP65RGB



Please read the manual thoroughly before using the product.

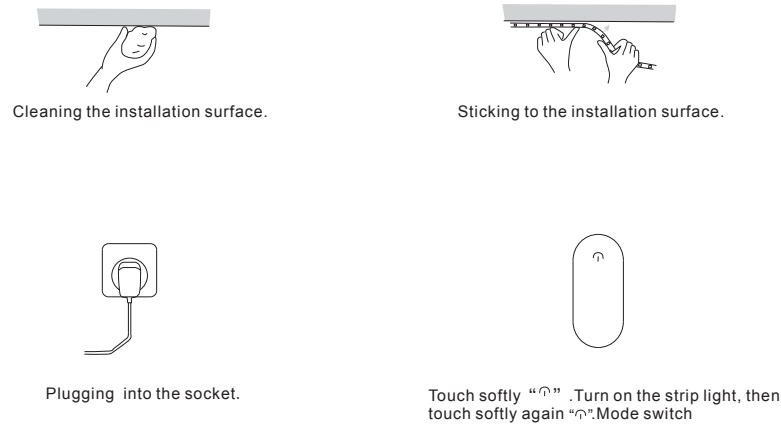
01



Thanks for choosing this product. We use high-quality LED strip lights, the whole new interactive mode, combined with natural light mixing algorithm, with 16 million colors to decorate your home.

02

## Product Instructions



## Smart Control

This product can support button control, compatible with smart control platform, APP control, support Amazon Echo, Google Home and other smart voice control.

### One-button control instructions:

- When the light is powered on, press and hold the button and keeps it for about 5S until the light flashes in red then let go. After the red light flashes about 15S, power off then power on again to enter different mode selecting.
- After entering the scene selecting mode, each time you press the button, change the mode. Each switch mode interval is about 2-3S, a total of 8 modes optional.

03

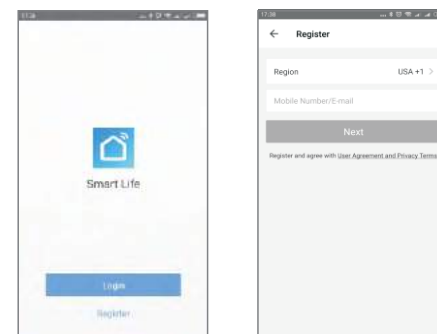
Simplified steps to install App on your smart device and pair with Amazon Alexa, Google Assistant using Smart Life App on Apple Store/Google Play Store Compatible with any smart phone or tablet including any Android and Apple devices

### How to connect Smart Device to Wi-Fi network

- Download **Smart Life** from or .

Download or scan the QR code and install the Smart Life App for either IOS or Android. Once downloaded, the app will ask you to register your device. Enter your phone number or email which ever one makes you feel comfortable and select the country you live in. If phone number selected you will receive a text with a registration code. If you choose email you will then create a password.

Attention: There's no Registration Code needed if email method chosen

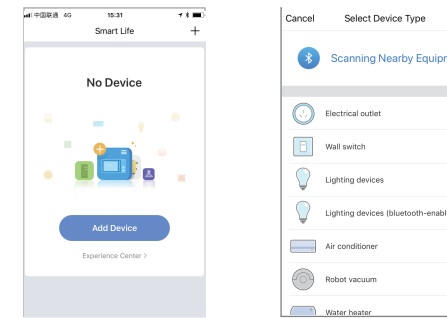


Please note: there're two modes configurabions(Quick Mode/AP Mode) available for you to choose before adding the device to app. Quick Mode is recommended.

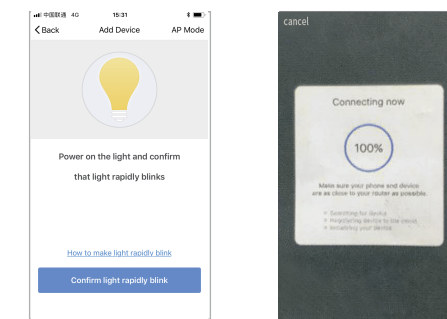
04

### Quick Mode Configuration (common)

- Make sure quick mode configuration is initiated: the smart LED Strip Lights blinks red rapidly. If it keep on red or other colors, press and hold the button on the Wi-Fi controller for 6 seconds until the smart led strip lights blinks red rapidly.
- Tap the icon "+" on the top right corner of "Smart Life", choose your device type (Lighting devices) and enter into "Add Device".



- Follow the in-app instructions to connect the smart LED Strip Lights to your Wi-Fi network. Please note: If smart LED Strip Lights blink rapidly but it still doesn't connect, you can try press button twice per second to switch colors until connected successfully.

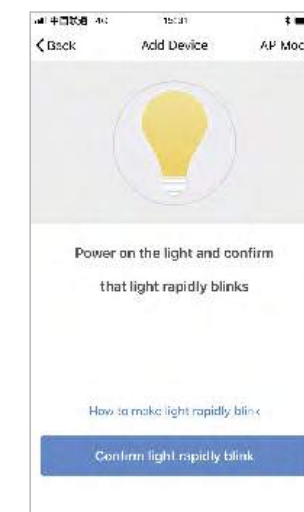


05

- Once connected, the App will prompt the connection, and click "Done".
- Now you can control the smart LED Strip Lights through **Smart Life** App.
- Once the configuration is completed successfully, the LED Strip Lights' Device will be added to the "Device List".

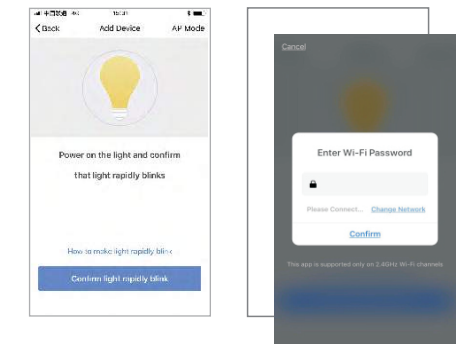
### AP Mode Configuration

- Make sure AP mode configuration is initiated: the smart LED Strip Lights blinks red rapidly. If it keep on red or other colors, press and hold the button on the Wi-Fi controller for 6 seconds until the smart led strip lights blinks red rapidly.
- Tap the icon "+" on the top right corner of "Start your smart life" tab and then click "AP Mode" at the top right corner of "Add Device" tab to add device.



06

- Follow the in-app instructions to connect the smart LED Strip Lights to your Wi-Fi network. Please note: If smart LED Strip Lights blink rapidly but it still doesn't connect, you can try press button twice per second to switch colors until connected successfully.



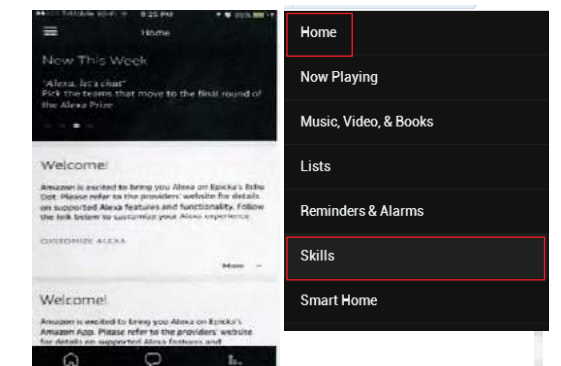
- Once connected, the App will prompt the connection, and click "Done".
- Now you can control the smart LED Strip Lights through **Smart Life** App.
- Once the configuration is completed successfully, the smart LED Strip Lights' Device will be added to the "Device List".

Please note: you can add the Smart led strip lights to Echo/Google Home following this instructions below. Or the one on the app (Open Smart Life App, go to "Profile" -> "Integration", tap "amazon echo" or "Google Home" and install).

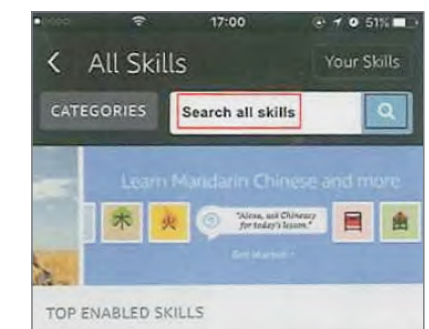
### How to connect Smart Decice to Amazon Alexa

- Launch **Smart Life** App, sign in your account and make sure smart LED Strip Lights is in device list.
- Modify device name so that Alexa can easily recognize, such as: Living room Light, Bedroom Light, etc.
- Minimize **Smart Life** APP, then launch the Alexa App and sign in your Alexa account and make sure you have at least one Alexa voice-controlled device installed like Echo, Echo dot, etc.
- In the upper left corner of Home page, click button to show App menu. Then click in the menu.

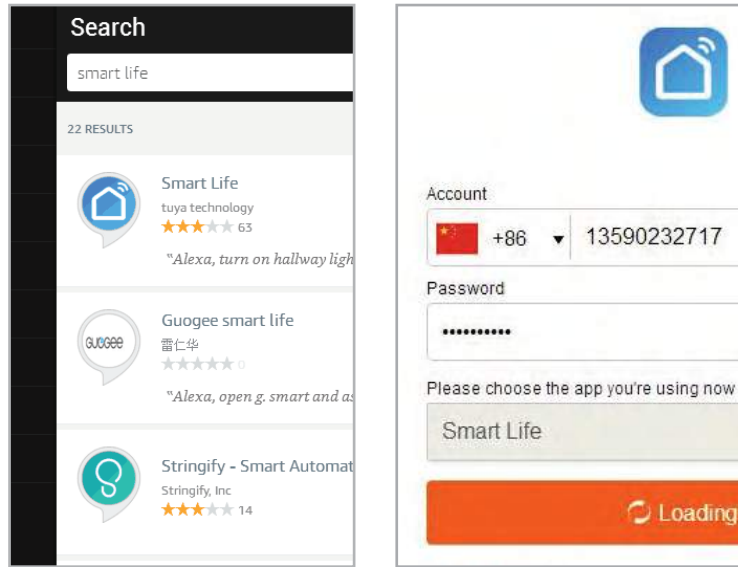
07



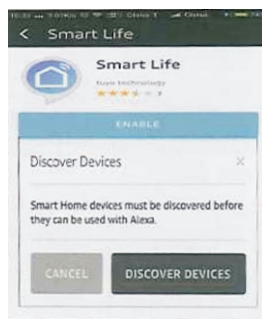
- Type in "Smart Life" in the search and click the search button next to it.



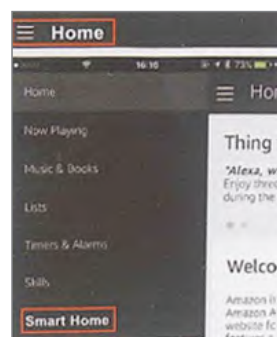
6.Enable Smart Life ,sign in your [Smart Life](#) account to complete the account linking.



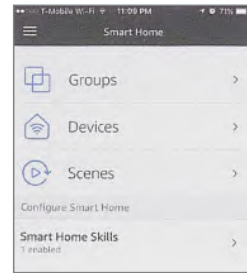
7.After successful account linking,ask Alexa to discover devices.After a 20-second device discovery, Alexa will show all the discovered devices.



8.Back to Menu by clicking button ,and then click [Smart Home](#) button.

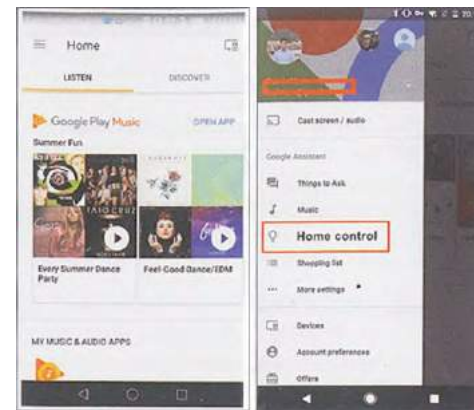


9.In Smart Home page,you can group your devices for different categories.Your [Smart Life APP](#) has been skilled with Alexa.Now you can control your Smart led strip lights through Alexa.

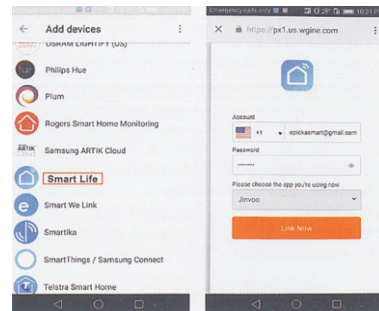


**How to connect Smart Device to Google Home**

- 1.Launch the Google Home App and make sure Google Home speaker is installed, If not,please follow Google Home speaker installation instruction to complete the installation.
- 2.Once Google Home is installed, in the upper left corner of App Home page,click button to show APP menu.The clicks"HomeControl" in the menu.



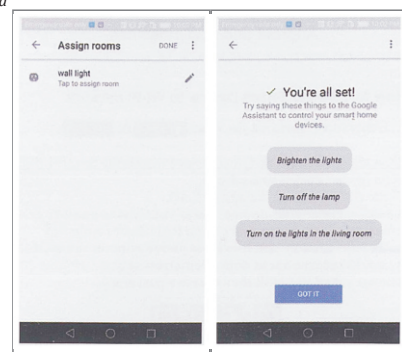
3.On "Add devices"page,scroll down to find "Smart Life" and then click it,Sign in Smart Life App with your Smart Life App account and password choose [Smart Life](#) App in the dropdown menu to complete the account linking.



4.After successful account linking, in Google Home App you can see all the smart devices from your Smart Life App account.You can assign rooms for each device.

5.Now you can use Google Home to control your smart devices, you can say like:

*Ok Google,turn on /off wall light*  
*Ok Google,set bedroom light to red*



**Factory Reset**

When the strip light is powered on, press and hold the switch to maintain for 5S until the light flashes in red then let go. The factory reset successfully.

\* When the strip light is connected with new Wi-Fi, you need to restore the factory settings, and then re-gain connection.

**Safety Precautions**

1. Please confirm the working voltage before using this product, the use of inappropriate voltage may cause damage to the product and security risks.
2. LED module can't be replaced, pls don't dismantle the product by yourself.
- 3.The strip light will generate heat when working, please keep the air circulation for heat dissipation.

**The harmful substances in the product**

Parts	Harmful Substances					
	lead (Pb)	mercury (Hg)	cadmium (Cd)	Hexavalent chromium (Cr(VI))	Polybrominated biphenyls (PBB)	Polybrominated diphenyl ethers (PBDE)
Strip Light	O	O	O	O	O	O
Controller	O	O	O	O	O	O
Adapter	X	O	O	O	O	O
Wire	X	O	O	O	O	O
Packing Box	O	O	O	O	O	O

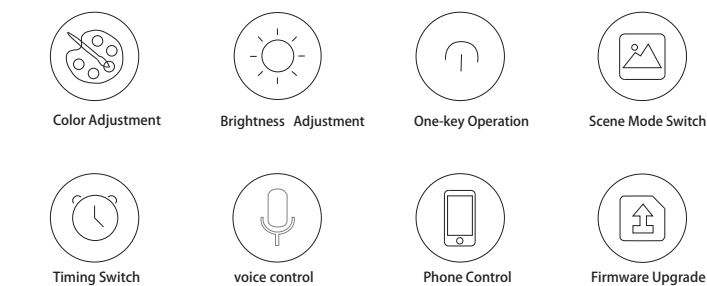
This chart is made in accordance with the provisions of SJ / T 11364.  
 O: The content of the hazardous material in all homogeneous materials of the part is within the limit requirement of GB / T26572.  
 X: The content of the hazardous substance in at least one homogeneous material of the part exceeds the limit requirement of GB / T 267572.

**Product Information**

Model NO.	S50123010-XX	S50123010-XX	S50123010-XX	S50123010-XX
Color	RGB	RGBW	RGB	RGBW
Strip Input	12V---2A---C-C	12V---2A---C-C	12V---3A---C-C	12V---4A---C-C
Rated Power	12W(LED Strip )	16W(LED Strip )	30W(LED Strip )	40W(LED Strip )

Lifespan : About 25000Hr  
 Supported Platforms: Android & iOS  
 Wireless Connect: Wi-Fi IEEE 802.11b/g/n 2.4GHz  
 Working Temperature: -20~+40°C  
 Working Humidity:0%-85%RH  
 Power Input:100-240V-50/60Hz 1.5A

**Product Features**



**Warranty Instructions**

After-sales service of lights with products in strict accordance with the "People's Republic of China Consumer Protection Law", "People's Republic of China Product Quality Law," the implementation of three bags of service, the service as follows:

1. Within 7-day receiving of the product, you are free to enjoy the return or replacement if it fails within the list of "Product Performance Fault List", after the service center tested and determined.
2. Within 8-15 days receiving of the product, you are free to enjoy the return or maintenance if it fails within the list of "Product Performance Fault List", after the service center tested and determined.
3. Within 12-day receiving of the product, you are free to enjoy the replacement or maintenance if it fails within the list of "Product Performance Fault List", after the service center tested and determined.

**Warranty Revocation Rules**

1. Unauthorized repairs, misuse, collision, negligence, liquid intrusion, accident, alteration, or tearing, alteration, labeling, security markings.
2. Exceeds warranty period.
3. Damage caused by force major.
4. Failures which are not listed in "Product Performance Fault List".
5. Failures listed in "Product Performance Fault List" but caused by man-made. Such as the use of dimmers, the use of non-rated voltage, the use of non-standard adapters, use in the not specified environment, resulting in product performance failure.

**Product Performance Fault List**

Product Name	Performance Breakdown
Strip Light	Light Failure
	Lack of Light Color
Controller	Unable to search for the Strip Light
	Button unable to Function
Adapter	Reset Failure
	Unable to power the Strip Light normally

**Warranty Card**

Customer Name \_\_\_\_\_ Contact Number (Mr./Ms.) \_\_\_\_\_  
 Address \_\_\_\_\_ Serial Number \_\_\_\_\_  
 Product Model \_\_\_\_\_ Purchased Date \_\_\_\_\_  
 Purchase Shop Name \_\_\_\_\_  
 Shop Address \_\_\_\_\_  
 Invoice Number \_\_\_\_\_



**FCC STATEMENT**

1. This device complies with Part 15 of the FCC Rules. Operation is subject to the following two conditions:

(1) This device may not cause harmful interference.

(2) This device must accept any interference received, including interference that may cause undesired operation.

2. Changes or modifications not expressly approved by the party responsible for compliance could void the user's authority to operate the equipment.

NOTE: This equipment has been tested and found to comply with the limits for a Class B digital device, pursuant to Part 15 of the FCC Rules. These limits are designed to provide reasonable protection against harmful interference in a residential installation.

This equipment generates uses and can radiate radio frequency energy and, if not installed and used in accordance with the instructions, may cause harmful interference to radio communications.

However, there is no guarantee that interference will not occur in a particular installation. If this equipment does cause harmful interference to radio or television reception, which can be determined by turning the equipment off and on, the user is encouraged to try to correct the interference by one or more of the following measures:

Reorient or relocate the receiving antenna.

Increase the separation between the equipment and receiver.

Connect the equipment into an outlet on a circuit different from that to which the receiver is connected.

Consult the dealer or an experienced radio/TV technician for help.

**FCC Radiation Exposure Statement**

This equipment complies with FCC radiation exposure limits set forth for an uncontrolled environment. This equipment should be installed and operated with minimum distance 20cm between the radiator & your body