

01

Specification

Product: MAMOLIGHT
 Model Name: LP-IOTMLWH, LP-IOTDMLWH
 Luminous Flux: 650Lm
 Input Voltage: 100VAC
 Lamp Base: E26/E27
 Rated Power: 9W
 Size: φ55*108mm
 Lifespan: 25000Hr
 Wireless Connect: Wi-Fi IEEE802.11b/g/n 2.4GHz

Factory Reset

Turn on and off the lamp 5 times. Hold for 2 seconds when the lamp is turned on or off. For the 5th time, hold the turn on mode for about 5 seconds. If the light blinks, which means the lamp is reset successfully.

02

Installation

1. Installing bulb
 Install the bulb and turn on the power switch.



Attention:

1. Pls insure the power is turned off when installing, removing or inspecting the bulb.
2. Pls don't install the bulb to dimmable appliances in case of damaging the bulb (For example, dimmable desk lamp).
3. Pls don't use it in damp environment.
4. It is not recommended to use the bulb in narrow or sealed space in case of losing signals or bad heat dissipation.

Smart Control

This product is compatible with smart platform and can be controlled by "Smart Life APP", supporting smart voice control such as Amazon echo, Google Home, etc.

03

Simplified steps to install App on your smart device and pair with Amazon Alexa, Google Assistant using Smart Life App on Apple Store/Google Play Store Compatible with any smart phone or table including any Android and Apple devices

How to connect Smart Device to Wi-Fi network

1. Download **Smart Life** from or .
- Download or scan the QR code and install the Smart Life App for either IOS or Android. Once download, the app will ask you to register your device. Enter your phone number or email which ever one makes you feel comfortable and select the country you live in. If phone number selected you will receive a text with a registration code. If you choose email you will then create a password.



Android



IOS

04

Attention: There's no Registration Code needed if email method chosen

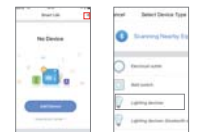


Please note: there're two modes configurations(Quick Mode/AP Mode) available for you to choose before adding the device to app. Quick Mode is recommended

Quick Mode Configuration (common)

1. Make sure quick mode configuration is initiated: the indicator light blinks blue rapidly (twice per second). If it blinks blue slowly (once every 3 seconds), press and hold the power button on the Mini Smart Plug for 8 seconds until the indicator light blinks rapidly.
2. Tap the icon "+" on the top right corner of "Smart your smart life", choose your device type and enter into "Add Device".

05



3. Follow the in-app instructions to connect the Smart Plug to your Wi-Fi network.



4. Once connected, the App will prompt the connection, and click "Done".
5. Now you can control the Mini Smart Plug through Smart Life App.
6. Once the configuration is completed successfully, the indicator light will turn to solid blue and the device will be added to the "Device List"

06

AP Mode Configuration

1. Make sure AP mode configuration is initiated: the indicator light blinks blue slowly (once every 3 second) if it blinks blue rapidly (twice per second), press and hold the power button on the Mini Smart Plug for 8 seconds until the indicator light blinks slowly.
2. Tap the icon "+" on the top right corner of "Smart your smart life" tab and then click "AP Mode" at the top right corner of "Add Device" tab to add device.



07

3. Follow the in-app instructions to connect the Mini Smart Plug to your Wi-Fi network.



Please note: you can add the Smart Plug Mini to Echo/Google Home following this instructions below. Or the one on the app (Open Smart Life App, go to "Profile" -> "Integration" , tap "amazon echo" or "Google Home" and install).

- ### How to connect Smart Device to Amazon Alexa
1. Launch **Smart Life** App, sign in your account and make sure Mini Smart Plug is in device list.
 2. Modify device name so that Alexa can easily recognize, such as Living room Light, Bedroom Light, etc.
 3. Minimize **Smart Life** APP, then launch the Alexa App and sign in your Alexa account and make sure you have at least one Alexa voice-controlled device installed like Echo, Echo dot, etc.

08

4. In the upper left corner of Home page, click button to show App menu. Then click in the menu.



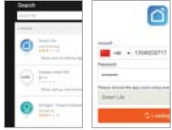
5. Type in "Smart life" in the search and click the search button next to it.



MAMOLIGHT User Manual & Warranty Card

09

6. Enable Smart Life Smart, Skill the sign in your Smart Life account to complete the account linking.

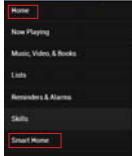


7. After successful account linking, ask Alexa to discover devices. After a 20-second device discovery, Alexa will show all the discovered devices.



10

8. Back to Menu by clicking  button ,and then click **Smart Home** button.




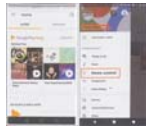
9. In Smart Home page, you can group your devices for different categories. Your Smart Life APP has been skilled with Alexa. Now you can control your Smart Plug through Alexa.



11

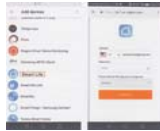
How to connect Smart Device to Google Home

1. Launch the Google Home App and make sure Google Home speaker is installed. If not, please follow Google Home speaker installation instructions to complete the installation.
2. Once Google Home is installed, in the upper left corner of App Home page, click  button to show APP Home menu. The clicks "HomeControl" in the menu.



3. On "Add devices" page, scroll down to find "Smart Life" and then click it. Sign in Smart Life App with your Smart Life App account and password choose Smart Life App in the dropdown menu to complete the account linking.

12



4. After successful account linking, in Google Home App you can see all the smart devices from your Smart Life App account. You can assign rooms for each device.
5. Now you can use Google Home to control your smart devices, you can say like:

Ok Google, turn on/off wall light
Ok Google, set bedroom light to red



13

Product Features



Product Performance Fault List

Performance failure	The bulb is not working when powered on.
	The bulb is blinking abnormally.
	Lacking of color or can't change color.
	APP can't connect with or control the bulb, causing by the bulb itself.
	Non-human factor (structure damage) affecting the use of bulb or some other safety abnormality.

14

The harmful substances in the product

Parts	Harmful Substances		
	(Pb)	(Hg)	(Cd)
Shell	0	0	0
PCBC	x	0	0
Power cord	0	0	0
	(Cr ⁶⁺)	(PBB)	(PBDE)
Shell	0	0	0
PCBC	0	0	0
Power cord	0	0	0

0: means the toxic and hazardous substance within this product exceeds SJ/T11363-2006 "Limits for toxic and hazardous substances in electronic products" requirement.

X: means the toxic and hazardous substance in at least one part of the product exceeds SJ/T11363-2006 requirement.

15

Warranty Instructions

After-sales service of lights with products in strict accordance with the "People's Republic of China Consumer Protection Law", "People's Republic of China Product Quality Law," the implementation of three bags of service, the services as follows:

1. Within 7-day receiving of the product, you are free to enjoy the return or replacement if it falls within the list of "Product Performance Fault List", after the service center tested and determined.
2. Within 8-15 days receiving of the product, you are free to enjoy the return or maintenance if it falls within the list of "Product Performance Fault List", after the service center tested and determined.
3. Within 12-day receiving of the product, you are free to enjoy the replacement or maintenance if it falls within the list of "Product Performance Fault List", after the service center tested and determined

16

Safety Precautions


1. Please confirm the working voltage before using this product, the use of inappropriate voltage may cause damage to the product and security risks.
2. Please don't dismantle the product by yourself!
3. The bulb will generate heats when working. Pts don't use it in sealed lamp for long time. Keep the air flow around the
4. The optical radiation of the led lamp meets the IEC62471-2005 exemption level requirements.

Warranty Revocation Rules


1. Unauthorized repairs, misuse, corrosion, negligence, liquid intrusion, accident, alteration, or tearing, alteration, labeling, security markings.
2. Exceeds warranty period.
3. Damage caused by force major.
4. Failures which are not listed in "Product Performance Fault List".

17

Warranty Card

Customer Name ----- Contact Number (Mr./Ms.) -----
 Address ----- Serial Number -----
 Product Model ----- Purchased Date -----
 Purchase Shop Name -----
 Shop Address -----
 Invoice Number ----- 

Warranty Card

Customer Name ----- Contact Number (Mr./Ms.) -----
 Address ----- Serial Number -----
 Product Model ----- Purchased Date -----
 Purchase Shop Name -----
 Shop Address -----
 Invoice Number ----- 

FCC STATEMENT

This device complies with Part 15 of the FCC Rules. Operation is subject to the following two conditions:

- (1) This device may not cause harmful interference.
- (2) This device must accept any interference received, including interference that may cause undesired operation.

Changes or modifications not expressly approved by the party responsible for compliance could void the user's authority to operate the equipment.

NOTE: This equipment has been tested and found to comply with the limits for a Class B digital device, pursuant to Part 15 of the FCC Rules. These limits are designed to provide reasonable protection against harmful interference in a residential installation.

This equipment generates uses and can radiate radio frequency energy and, if not installed and used in accordance with the instructions, may cause harmful interference to radio communications. However, there is no guarantee that interference will not occur in a particular installation. If this equipment does cause harmful interference to radio or television reception, which can be determined by turning the equipment off and on, the user is encouraged to try to correct the interference by one or more of the following measures:

- Reorient or relocate the receiving antenna.
- Increase the separation between the equipment and receiver.
- Connect the equipment into an outlet on a circuit different from that to which the receiver is connected.
- Consult the dealer or an experienced radio/TV technician for help.

FCC Radiation Exposure Statement

This equipment complies with FCC radiation exposure limits set forth for an uncontrolled environment. This equipment should be installed and operated with minimum distance 20cm between the radiator & your body