

# Application Photos



1. Pic above: Gateway is mounted on the right side air duct in the bus.
2. Pic Top Right: RF wire to antenna from gateway runs into a passthrough hole in the roof.
3. Pic Bottom Right: The wire is connected to the antenna mounted on the roof of the bus.



# Continued...

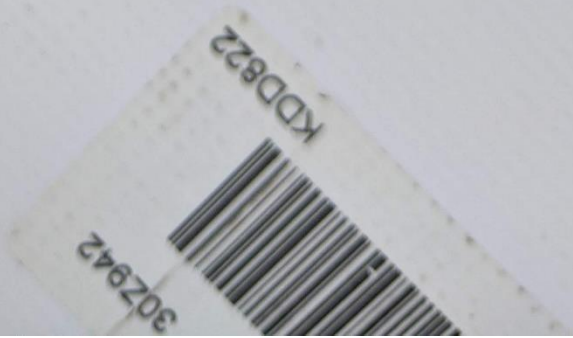








**VECTOR** > CAN-WiFi-GW  
Base SW: 1.2.0  
App SW: 2.1.3  
Ublox SW: 6.0.1-04  
Vector Informatik GmbH  
Ingersheimer Str. 24  
70499 Stuttgart  
Germany  
180109-000623  
CE  
Made in Germany  
Declaration of conformity:  
<https://www.vector.com/ce>





Type: CANlink wireless 3002 Var. Vector  
PartNo: 253001174  
Rev.: 2.0.0  
Supply: 8-32V  
CAN: ISO 11898-2  
WL MAC: D4CA6E867EF2  
S/N: 1907286

**PROEMION**



22







