



© 2023 ALLSTAR INNOVATIONS.  
ALL RIGHTS RESERVED.  
CALMING HEAT IS A TRADEMARK OF ALLSTAR INNOVATIONS.  
MADE IN CHINA | PATENT PENDING  
ITEM# 31841

CHS3-9-IM2



SHARPER IMAGE®

## CALMING HEAT™ SHOULDER WRAP

MODEL:CHS3-9



PLEASE VISIT **CALMINGHEAT.COM** FOR MORE  
GREAT PRODUCTS & SPECIAL OFFERS

PLEASE VISIT **CALMINGHEAT.COM** FOR MORE  
GREAT PRODUCTS & SPECIAL OFFERS



SHARPER IMAGE  
CALMING HEAT™ SHOULDER WRAP



MODEL:CHS3-9

## FCC CERTIFIED

---

This device complies with part 15 of the FCC Rules. Operation is subject to the following two conditions: (1) This device may not cause harmful interference, and (2) this device must accept any interference received, including interference that may cause undesired operation.

Note: This product has been tested and found to comply with the limits for a Class B digital device, pursuant to part 15 of the FCC Rules. These limits are designed to provide reasonable protection against harmful interference in a residential installation. This product generates, uses and can radiate radio frequency energy and, if not installed and used in accordance with the instructions, may cause harmful interference to radio communications. However, there is no guarantee that interference will not occur in a particular installation. If this product does cause harmful interference to radio or television reception, which can be determined by turning the product off and on, the user is encouraged to try to correct the interference by one or more of the following measures:

- Reorient or relocate the receiving antenna.
- Increase the separation between the product and receiver.
- Connect the product into an outlet on a circuit different from that to which the receiver is connected.
- Consult the dealer or an experienced radio/TV technician for help.

Changes or modifications not expressly approved by the party responsible for compliance could void the user's authority to operate the equipment.

This Class B digital apparatus complies with Canadian ICES-003.

# FAQ

---

**What do I do if my heating pad unexpectedly shuts off or won't turn on (not including auto-off)?**

If this occurs, simply unplug the unit from the outlet, wait 3 minutes, and plug it back in.

**What if I leave my Shoulder Wrap on by accident?**

The Shoulder Wrap comes with a 2 hr. auto-off heat feature and a 15 min. auto-off for the vibration feature.

**Why doesn't my Shoulder Wrap feel hot enough?**

Please ensure that the controller of Shoulder Wrap is facing away from your body.  
Using it on the opposite side will make the pad feel substantially cooler.

# TABLE OF CONTENTS

---

<b>Important Safety Instructions</b>	<b>4</b>
<b>Instructions</b>	<b>6</b>
<b>Controller Features</b>	<b>7</b>
<b>Reset Instructions &amp; Auto Off Feature</b>	<b>8</b>
<b>Cleaning Instructions</b>	<b>9</b>
<b>FAQ</b>	<b>10</b>
<b>FCC CERTIFIED</b>	<b>11</b>



# IMPORTANT SAFETY INSTRUCTIONS

## DO NOT DESTROY

### DANGER:

TO REDUCE RISKS OF BURNS, ELECTRIC SHOCK, FIRE, AND PERSONAL INJURY, THIS PRODUCT MUST BE USED IN ACCORDANCE WITH THE FOLLOWING INSTRUCTIONS:

1. READ ALL INSTRUCTIONS.
2. DO NOT USE WHILE SLEEPING.
3. DO NOT USE ON AN INFANT OR ON AN ANIMAL.
4. THIS PAD IS NOT TO BE USED ON OR BY AN INVALID, SLEEPING, HELPLESS OR UNCONSCIOUS PERSON, A PERSON WITH DIABETES, A PERSON WITH POOR BLOOD CIRCULATION OR INSENSITIVITY TO HEAT.
5. THIS APPLIANCE IS NOT TO BE USED BY CHILDREN. CLOSE SUPERVISION IS NECESSARY WHEN ANY APPLIANCE IS USED NEAR CHILDREN. CHILDREN SHOULD NOT PLAY WITH THE APPLIANCE.
6. DO NOT USE ON AREAS OF INSENSITIVE SKIN.
7. BURNS CAN OCCUR REGARDLESS OF CONTROL SETTING, CHECK SKIN UNDER PAD FREQUENTLY.
8. DO NOT USE IN AN OXYGEN ATMOSPHERE.
9. DO NOT USE PINS OR OTHER METALLIC MEANS TO FASTEN THIS PAD IN PLACE.
10. DO NOT SIT ON, AGAINST, OR CRUSH PAD – AVOID SHARP FOLDS. PLACE PAD ON TOP OF AND NOT UNDER THE PART OF BODY NEEDING HEAT.
11. UNPLUG WHEN NOT IN USE. NEVER LEAVE APPLIANCE UNATTENDED, ESPECIALLY IF CHILDREN ARE PRESENT.
12. NEVER PULL THIS PAD BY THE SUPPLY CORD. DO NOT USE THE CORD AS A HANDLE. DO NOT PINCH CORD.
13. DO NOT TUCK IN, TRAP, FOLD, CROSS, PINCH OR WRAP CONTROLLER OR CORD WITH HEATING PAD DURING USE.
14. NEVER LEAVE THIS PAD CONNECTED TO AN ELECTRICAL SUPPLY CIRCUIT WHEN NOT IN ACTUAL USE. WHEN NOT IN USE THIS PAD SHOULD BE KEPT IN A COOL, DARK, DRY PLACE – PREFERABLY IN THE ORIGINAL CARTON.

# CLEANING INSTRUCTIONS

### CAUTION:

DO NOT DRY CLEAN!  
DO NOT BLEACH!  
DO NOT USE WRINGER!

1. Disconnect pad from outlet.
2. Spot clean with damp rag or mild detergent
3. Lay flat to dry
4. Do NOT submerge in water
5. Do not plug in pad and pad connector until they are completely dry.

# PRODUCT SPECIFICATIONS

Pad Size:	12.96" x 12.58"
Power Rating:	Input: 100-240V 50/60Hz 0.65A Max Output: 12Vdc 2000mA 24W
Auto Shut-Off Timer	2 Hours
9 Massage Settings: Auto Off 15 Minutes	High Speed Pulse High Speed Constant High Speed Speed Up and Slow Down Med Speed Pulse Med Speed Constant Med Speed Speed Up and Slow Down Low Speed Pulse Low Speed Constant Low Speed Speed Up and Slow Down

Use only with listed power supply:  
KA2401A-1202000US appointed adapter  
Use with wireless control model:  
2APZ3-WSWK

## RESET INSTRUCTIONS

---

If your heating pad unexpectedly shuts off (not including the Auto-Off setting feature), follow these steps:

1. Unplug the unit.
2. Wait 3 minutes.
3. Plug unit in and operate normally.

## AUTO-OFF FEATURE

---

This product includes an Auto-Off Feature: The heating function will turn off automatically after 2 hours of continuous use, and the vibration feature will turn off after 15 minutes of continuous use.

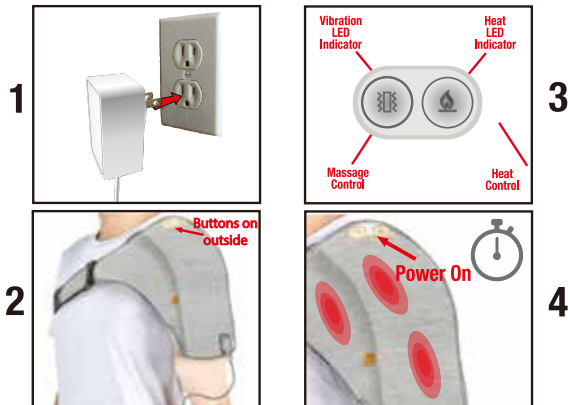
**NOTE:** After a power outage, the Auto-Off feature automatically resets the timer.

15. CAREFULLY EXAMINE PAD, COVER, CORD AND CONTROLLER BEFORE EACH USE. DISCARD THE PAD IF ANY SIGN OF DETERIORATION, WEAR OR DAMAGE. DO NOT TAMPER WITH THIS PAD IN ANY WAY. THERE ARE NO USER SERVICEABLE PARTS. IF PAD DOES NOT FUNCTION SATISFACTORILY, SEE WARRANTY OR CONTACT CUSTOMER SERVICE.
16. LOOP CORD LOOSELY WHEN STORING, TIGHT WRAPPING MAY DAMAGE CORD AND INTERNAL PARTS. ALLOW TO COOL BEFORE STORING AND DO NOT CREASE BY PLACING ITEMS ON TOP OF IT. STORE IN THE ORIGINAL PACKAGING, IN A COOL, DARK, DRY PLACE.
17. USE THIS PAD ONLY AT RATED VOLTAGE, AS MARKED ON THE PRODUCT. DO NOT USE WITH GENERATORS, POWER CONVERTERS, OR INVERTERS.
18. DO NOT USE THIS PAD WITH LINIMENT, SALVE OR OINTMENT PREPARATIONS. SKIN BURNS COULD RESULT.
19. THIS APPLIANCE IS NOT INTENDED FOR MEDICAL USE IN HOSPITALS.
20. MODELS WITH A MASSAGE FUNCTION: DO NOT MASSAGE WHEN PAIN IS PRESENT, OR AREAS THAT ARE SWOLLEN, INFLAMED, COVERED WITH SKIN ERUPTIONS OR UNEXPLAINED PAIN. CONSULT A PHYSICIAN BEFORE USING ANY EQUIPMENT OF THIS TYPE.
21. MODELS MAY CONTAIN FILLING MATERIALS (CLAY BEADS). IF FILLING MATERIAL IS RELEASED DUE TO PRODUCT DAMAGE, DISCONTINUE USE OF PRODUCT. DO NOT INGEST FILLING MATERIAL. IF FILLING MATERIAL IS INGESTED, SEEK MEDICAL ATTENTION.
22. DO NOT DRY CLEAN, DO NOT BLEACH, DO NOT IMMERSE IN WATER.
23. NEVER USE PAD IF THE PRODUCT FABRIC IS NOT INTACT
24. SAVE THESE INSTRUCTIONS.



# INSTRUCTIONS

1. Plug the any 120 volt AC electrical outlet and press the heat or massage button to power on.
2. Wrap heating pad on the shoulder with the controller facing away from body.
3. Select desired heat and/or massage level. To turn ON, press button and hold active button for 1.5 seconds.
4. Wait for pad to heat up.
5. Avoid crushing pad. Avoid sharp folds during use.



# CONTROLLER FEATURES

## Intensity Settings



## Massage

Press x1 = High Pulse  
 Press x2 = High Constant  
 Press x3 = High Speed Up & Down  
 Press x4 = Med Pulse  
 Press x5 = Med Constant  
 Press x6 = Med Speed Up & Down  
 Press x7 = Low Pulse  
 Press x8 = Low Constant  
 Press x9 = Low Speed Up & Down  
 Press & Hold 1.5 Seconds = Off

## Heat

Press x1 = High  
 Press x2 = Med  
 Press x3 = Low  
 Press & Hold 1.5 Seconds = Off

**Wireless remote Included :** This device includes a wireless remote to help with changing controls when the device is on. For easy access of the controller, place the controller in the specially designed storage pocket located on the sides of the product.

