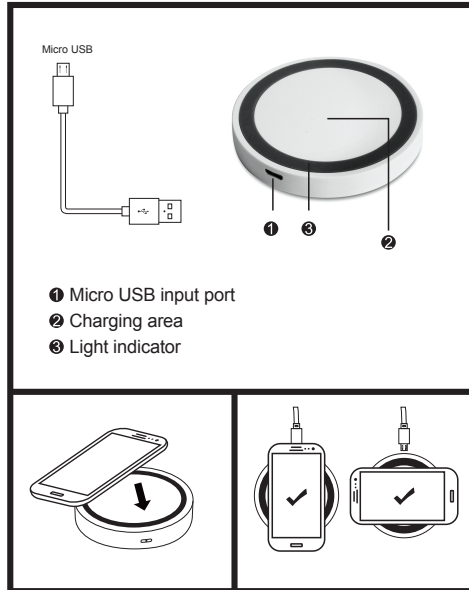


Size: 21 x 10 cm

## Wireless Charger User Manual



### Wireless charger's charging method

1. Connect wireless charging pad to a power source via included micro USB cable. Charging pad entering standby mode with red indicator light on.
2. Place your portable device in the center area of the charging pad, charging begins with blue color indicator light on.
3. Red light turns back on when charging completed.

### Product specifications:

Model: EL163

Main functions: wireless charging transmitter;

Standard version: WPC - 1.1;

Charging type: one-on-one charge corresponding area;

Input: DC: 5V/1.5A;

Output: 5V, up to 1A;

Effective Distance: 4 to 6 MM;

Conversion efficiency:  $\geq 70\%$ ;

Charging methods: induction model;

Working frequency: 100-205 KHZ;

Accessories: USB cable; Wireless charging pad;

Packing box, and user manual.

### Attention:

1. Keep the device away from fire, water or other liquid.
2. Keep magnetic cards, like credit cards, away from the device to prevent magnetism loss.
3. Do not use the phone while charging to prevent the device overheated and damaged.
4. It is normal to feel warm when the device is in use. Do not use when it is too hot or there is sign of overheating.
5. Older phone models not compatible with Qi standard may require additional Qi wireless charging receiver card. Please check with phone provider/manual.

### FCC Warning Statement:

Changes or modifications not expressly approved by the party responsible for compliance could void the user's authority to operate the equipment.

This equipment has been tested and found to comply with the limits for a Class B digital device, pursuant to Part 15 of the FCC Rules. These limits are designed to provide reasonable protection against harmful interference in a residential installation. This equipment generates uses and can radiate radio frequency energy and, if not installed and used in accordance with the instructions, may cause harmful interference to radio communications. However, there is no guarantee that interference will not occur in a particular installation. If this equipment does cause harmful interference to radio or television reception, which can be determined by turning the equipment off and on, the user is encouraged to try to correct the interference by one or more of the following measures:

- Reorient or relocate the receiving antenna.
- Increase the separation between the equipment and receiver.
- Connect the equipment into an outlet on a circuit different from that to which the receiver is connected.
- Consult the dealer or an experienced radio/TV technician for help.