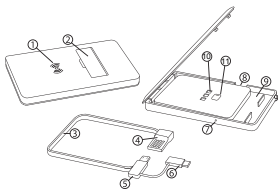


Roche Multifunctional Wireless Charging Stand

Instruction Manual

7141-73



Features:

1. Wireless Charging Surface
2. Foldable Phone Stand
3. 3-in-1 Charging Cable
4. USB Input Tip
5. 2-in-1 Charging Tip
6. Type-C Charging Tip
7. LED Indicator
8. Micro-USB Input Port
9. Charging Cable Storage Compartment
10. LED Flashlight
11. Flashlight On/Off Button

What's included:

- 1 x Wireless Charging Stand
- 1 x Instruction Manual
- 1 x 3-in-1 Charging Cable

Tech Specifications

- Input power: 5V/2A
- Micro-USB input: 5V/1A
- Wireless Charging Output: 5V/1A

INSTRUCTIONS:

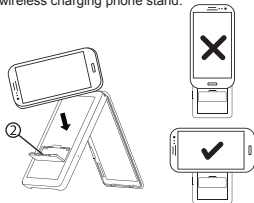
1. Wireless Charging Function:

- Remove the 3-in-1 charging cable(3) out from the cable storage compartment of the wireless charging pad.
- Once removed, connect the USB input tip(4) to the appropriate power source and the 2-in-1 charging tip(5) to the Micro-USB input port(8) of the wireless charging pad.
- Once connected, the LED indicator will glow WHITE, then light off to indicate in standby mode and is ready to begin charging.
- Place the wireless charging supported device on the charging surface(1),the device will begin to charge automatically. (LED will glow WHITE when device is charging).

**** Note:** When wireless charging, if the LED indicator is flashing WHITE the device is either NOT a wireless charging device or there is an object between the device and charging surface interfering with the charging process.

2. Wireless Charging Pad - Phone Stand:

- As shown below the wireless charging pad is able to be fold open to be used as a wireless charging phone stand.



SAFETY PRECAUTIONS:

- **WARNING-**When using this product, basic precautions should always be followed:
 1. Read all the instructions before use.
 2. Never store or use this product in temperatures below 32°F (0°C) or above 115°F (45°C).
 3. Do not overcharge your phone. The unit may become hot under excessive use. Remove your phone once it is fully charged. Never charge your phone for more than 7 hours at a time.
 4. To reduce the risk of injury, close supervision is required when the product is used near children.
 5. Do not expose the device to moisture.
 6. Do not use the device in excess of its output rating. Overload outputs above the rating may result in a risk of fire or injury.
 7. Do not use the device if damaged or modified.
 8. Damaged or modified batteries may exhibit unpredictable behaviour resulting in fire, explosion or risk of injury.
 9. Do not disassemble the device. For repairs, seek a qualified service professional. Incorrect reassembly may result in a risk of fire or injury.
 10. Do not expose the device to fire or excessive temperatures. Exposure to fire or temperatures above 104°F (40°C) may result in explosion.
 11. To ensure product safety, ensure that qualified service professionals use only identical replacement parts.
 12. Attachments on the back of your phone can impede the effectiveness of the wireless charger, and lead to overheating. Please remove attachments from the

phone before charging on this device.

FCC Statement:

This device complies with Part 15 of the FCC Rules. Operation is subject to the following two conditions:

- (1) This device may not cause harmful interference, and
- (2) This device must accept any interference received, including interference that may cause undesired operation.

- * **Warning:**
Changes or modifications not expressly approved by the party responsible for compliance could void the user's authority to operate the equipment.

FCC Warning Statement

The distance between user and products should be no less than 20cm
Changes or modifications not expressly approved by the party responsible for compliance could void the user's authority to operate the equipment. This equipment has been tested and found to comply with the limits for a Class B digital device, pursuant to Part 15 of the FCC Rules. These limits are designed to provide reasonable protection against harmful interference in a residential installation. This equipment generates uses and can radiate radio frequency energy and, if not installed and used in accordance with the instructions, may cause harmful interference to radio communications. However, there is no guarantee that interference will not occur in a particular installation. If this equipment does cause harmful interference to radio or television reception, which can be determined by turning the equipment off and on, the user is encouraged to try to correct the interference by one or more of the following measures:

- Reorient or relocate the receiving antenna.
- Increase the separation between the equipment and receiver.
- Connect the equipment into an outlet on a circuit different from that to which the receiver is connected.
- Consult the dealer or an experienced radio/TV technician for help.



MADE IN CHINA