



Home Security Simplified  
[www.laviewusa.com](http://www.laviewusa.com)

# WHITE NOISE LIGHT

Y2 Wake-up Light



For more support info, tutorial videos and guides, please visit:  
[www.laviewusa.com/pages/y2](http://www.laviewusa.com/pages/y2)

# CONTENTS

|       |       |                                |
|-------|-------|--------------------------------|
| 02~03 | ..... | Important Safety Instructions  |
| 04~05 | ..... | What's in the Box              |
| 06~06 | ..... | Installation & Getting Started |
| 07~07 | ..... | Q&A                            |
| 08~08 | ..... | Product Warranty Card          |

## FCC Compliance

NOTE: This equipment has been tested and found to comply with the limits for a Class B digital device, pursuant to Part 15 of the FCC Rules. These limits are designed to provide reasonable protection against harmful interference in a residential installation. This equipment generates uses and can radiate radio frequency energy and, if not installed and used in accordance with the instructions, may cause harmful interference to radio communications. However, there is no guarantee that interference will not occur in a particular installation. If this equipment does cause harmful interference to radio or television reception, which can be determined by turning the equipment off and on, the user is encouraged to try to correct the interference by one or more of the following measures:

- Reorient or relocate the receiving antenna.
- Increase the separation between the equipment and receiver.
- Connect the equipment into an outlet on a circuit different from that to which the receiver is connected.
- Consult the dealer or an experienced radio/TV technician for help

Any changes or modifications not expressly approved by the party responsible for compliance could void the user's authority to operate the equipment.

Note: The manufacturer is not responsible for any radio or TV interference caused by unauthorized modifications to this equipment. Such modifications could void the user's authority to operate the equipment.

This device complies with Part 15 of the FCC Rules. Operation is subject to the following two conditions:

- (1) This device may not cause harmful interference, and
- (2) This device must accept any interference received, including interference that may cause undesired operation

#### RF Exposure Warning Statements:

This equipment complies with FCC radiation exposure limits set forth for an uncontrolled environment. This equipment should be installed and operated with minimum distance 20cm between the radiator & your body.

# IMPORTANT SAFETY INSTRUCTIONS



READ AND FOLLOW ALL SAFETY INFORMATION AND INSTRUCTIONS.  
PLEASE KEEP FOR FUTURE REFERENCE



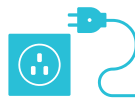
To ensure correct and safe installation, usage and functioning of the product, always follow these instructions carefully and keep for future reference.



Use **ONLY** the provided USB-C cable and AC power adapter. For sufficient brightness, ensure an input power of more than 5V 2A.



The luminaire cannot be replaced, please do not dismantle or modify by yourself. Otherwise it will be deemed as waiver of warranty.



Always unplug the light prior to installation, maintenance or carrying out any repair activities.



Follow local regulations regarding disposal or recycling of the device and components.



If you have any product problems during use, please contact the Customer Support at [info@laviewusa.com](mailto:info@laviewusa.com)



**DO NOT** place or operate near extreme heat sources, moisture, or corrosive substances.



**DO NOT** operate any light with a damaged cord or after malfunction occurs, or damaged in any manner.



**DO NOT** remove the power plug with wet hands as it may cause electrical shock.



The light is not water proof or rugged.



Please use a dry cloth to clean and get rid of dust on a regular basis.



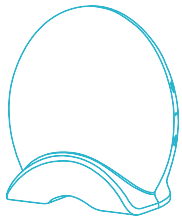
The light may contain tiny gadgets, Please keep kids away from them.

ABOUT YOUR

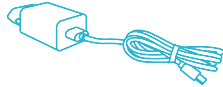
# WHITE NOISE LIGHT WITH WAKE UP LIGHT



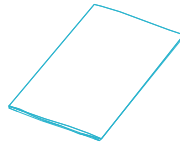
## / WHAT'S IN THE BOX



Y2

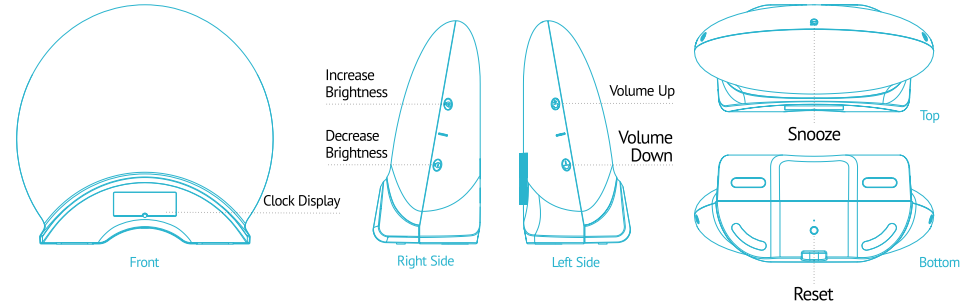


Power Adapter



User Manual

|                          |   |
|--------------------------|---|
| Model                    | Y2 Wake up Light / LV-WNY2-W            |
| Input                    | 100-240V-50/60GHz DC 5V 2A              |
| Power                    | Light 7W, Speaker 3W                    |
| Supported Wi-Fi Protocol | IEEE 802.11 b/g/n 2.4GHz                |
| Supported OS             | Android 5.0 or higher iOS 9.0 or higher |
| Lumens                   | 350lm±10%                               |
| Color Temperature        | 2000K/4000K                             |
| CRI                      | > 80                                    |
| Operating Temperature    | 14°F - 104°F (-10°C - 40°C)             |
| Lifespan                 | 25000 Hours                             |



- Increase Brightness**  
Single tap to increase the brightness.  
Long press to constantly increase the brightness.
- Decrease Brightness**  
Single tap to decrease the brightness.  
Long press to constantly decrease the brightness.
- Volume Up**  
Single tap to turn up the volume.  
Long press to constantly turn up the volume.
- Volume Down**  
Single tap to turn down the volume.  
Long press to constantly turn down the volume.
- Snooze**  
When Y2 is off, single tap to turn on light and sound.  
When light or sound is on, long press for 2 sec to turn off Y2.  
When alarm goes on, single tap to snooze, or long press for 2 sec to turn off the alarm.
- Reset**  
Hold for 5 seconds to reset night light.  
Hold for 2 seconds to turn on/off Bluetooth mode.

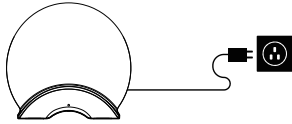
# INSTALLATION & GETTING STARTED



STEP 1

## Rest the cable and plug the adapter to the power outlet with it.

Then connect the cable to the light, the light will initiate pairing mode with indicator blinking **BLUE** after 3 seconds of showing solid **RED**.( If the indicator does not blink blue, please refer to Q&A on the next page for solutions.)



STEP 2



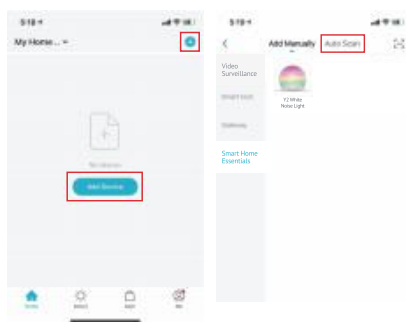
LaView



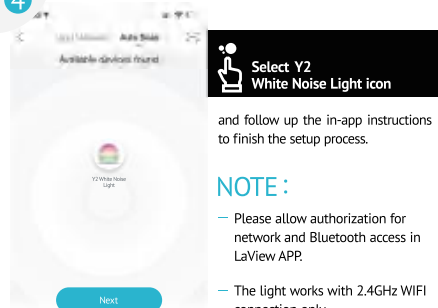
- Search and download our LaView App on the app store and register your account.
- Open the App, select "sign up" to create a new account or log in with the existing account.

STEP 3

After entering home screen of the App, select "+" or "Add Device" in the top right corner, select "Auto Scan":



STEP 4



and follow up the in-app instructions to finish the setup process.

### NOTE:

- Please allow authorization for network and Bluetooth access in LaView APP.
- The light works with 2.4GHz WIFI connection only.

# Q&A >>

General resolutions for issues on using White Noise Machine with Night Light.

Cannot enter Pairing Mode.

Please hold down the reset button for 5 seconds to reset the light and wait until the indicator blinks blue and follow the steps for adding the light as mentioned previously.

Cannot receive the Verification Code?

1. Make sure you have entered a correct Email address for registration.
2. Check if the Email address is blocked in the spam.
3. If failed to acquire verification code after several attempts, please contact LaView Customer Support.

Cannot connect Wi-Fi network/ Wi-Fi connection unstable.

1. Make sure your light is connected to a 2.4GHz network.
2. Make sure you have entered correct Wi-Fi password.
3. Place the light within the signal coverage of the router.
4. Avoid obstacles such as metal objects or windows, multiple walls apart, etc.

Cannot connect my light to LaView APP?

1. Make sure your phone and light are connected to the same 2.4GHz Wi-Fi network.
2. Reset the light and reinstall the app, reconnect them.

Failed to light up after connecting.

1. Make sure the light is connected to an appropriate electrical outlet.
2. Check if the light is turned on.

Control panel is not responsive.

1. Operate with dry hands.
2. Disconnect the power adapter to restart the light.

For more product and support information, please visit LaView official website at: [www.laviewusa.com/pages/y2](http://www.laviewusa.com/pages/y2)

Or contact us at: [info@laviewusa.com](mailto:info@laviewusa.com)

# PRODUCT WARRANTY CARD

Your LaView product is protected by a 1-year warranty from the purchase date.  
For more information on repairs, exchange, and other policies, please visit :  
[www.laviewusa.com](http://www.laviewusa.com)

Please send all inquiries through the Contact Form on our website, or email us at  
[info@laviewusa.com](mailto:info@laviewusa.com).

And our technicians would be glad to assist you.

For more support info, tutorial videos and guides, please visit:

[www.laviewusa.com/pages/y2](http://www.laviewusa.com/pages/y2)



Change device name and other basic settings

Turn light on, off or breathing

Adjust light brightness

Hold and swipe left/right to switch between RGB light and white light

Favourite, Theme and Rhythm mode

Swipe to adjust volume

Main switch

Main panel

Play/ pause sound

Countdown, focus and clock setting

Sunrise/sunset routine



## DOWNLOAD LAVIEW APP

LaView App allows you to control and customize your Wake up Light settings via your mobile.. Search for the latest LaView app on Apple App Store or Google Play