

## Quick Guide of Using Amazon Echo To Control Smart Devices



### FCC Statement

This equipment has been tested and found to comply with the limits for a Class B digital device, pursuant to Part 15 of the FCC Rules. These limits are designed to provide reasonable protection against harmful interference in a residential installation. This equipment generates uses and can radiate radio frequency energy and, if not installed and used in accordance with the instructions, may cause harmful interference to radio communications. However, there is no guarantee that interference will not occur in a particular installation. If this equipment does cause harmful interference to radio or television reception, which can be determined by turning the equipment off and on, the user is encouraged to try to correct the interference by one or more of the following measures:

- Reorient or relocate the receiving antenna.
- Increase the separation between the equipment and receiver.
- Connect the equipment into an outlet on a circuit different from that to which the receiver is connected.

— Consult the dealer or an experienced radio/TV technician for help.

This device complies with part 15 of the FCC Rules. Operation is subject to the following two conditions:

- (1) This device may not cause harmful interference, and
- (2) this device must accept any interference received, including interference that may cause undesired operation.

Changes or modifications not expressly approved by the party responsible for compliance could void the user's authority to operate the equipment.

#### RF Exposure Statement

To maintain compliance with FCC's RF Exposure guidelines, this equipment should be installed and operated with minimum distance of 20cm between the radiator and your body. This device and its antenna(s) must not be co-located or operation in conjunction with any other antenna or transmitter.

## 1.Add device

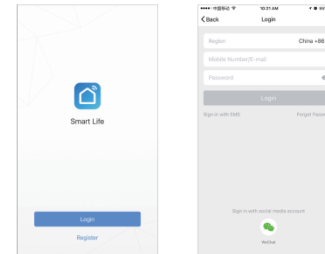
### 1.1Download Smart Life APP



Please scan the QR Code, or get Smart Life downloaded from App Store or Android Market

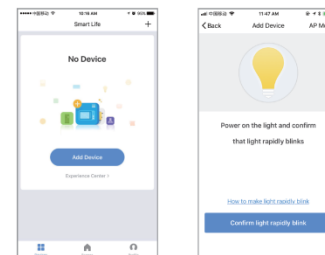
### 1.2.Register an account in Smart Life

Open Smart Life into account registration page,click on the upper right corner of the "Register".

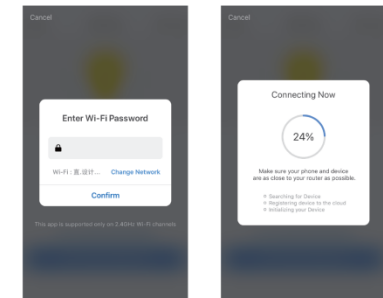


### 1.3Add devices (for example, Smart Bulb)

After login to Smart Life APP,click "+".



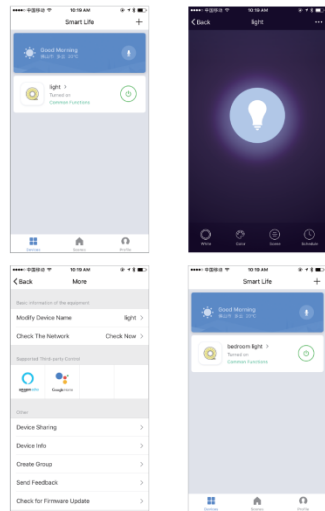
- Smart Life APP support to types of distribution network modes:EZ mode and AP mode.EZ mode is default .
- EZ Mode:The indicator light flash rapidly. (Two times a second)
- AP Mode:The indicator light flash slowly



- Select the WIFI you are using and put the password .Click "next" to connect the device.

#### 1.4 Rename the device

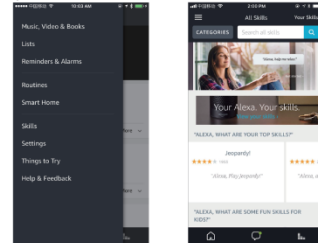
After the devices is added successfully,click the device description text to modify device name .The name of the device is recommended to use easy pronunciation of the English words.(Amazon Echo only supports English temporarily)



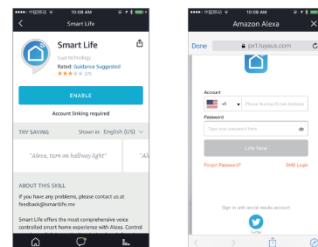
Multiple devices can be added and renamed according to the above procedures .

#### 2.Enable Smart Life skill in Alexa App

Choose "skill" in the options bar,and then search "Smart Life" in the input box



Select **Smart Life** in the search results ,and then click "Enable Skill"



Then input the user name and password that you had previously registered. Only support the account int the Untied State.

#### 3.Control Smart Bulb by voice

After the above operation is successfully ,you can control the bulb via Echo.

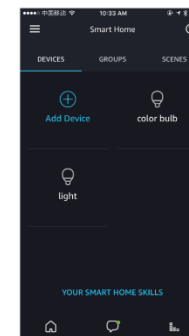
##### 3.1.Discover devices

Firstly ,you need to say to Echo.

Echo(or Alexa), discover my devices.

Echo will start to find the devices which is added in Smart Life APP,which will take about 20 seconds,then it will tell you the result.

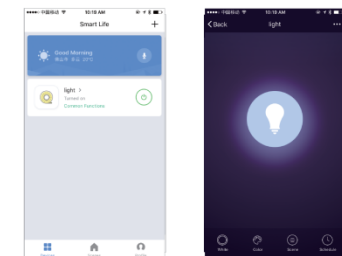
You can also click "Add Devices in Alexa APP,then it will show the devices that found successfully.



#### 3.2 Control devices by voice

Attention:The name of the device must be consistent with the addition of Smart Life APP.

You can also group the bulbs and give instructions to control them together.



Attention:  
Echo is one of the wake-up names; which can be any of these three names(Settings):**Alexa,Echo,Amazon**

#### 3.3 Support Skill list

You can control devices by instructions like these

- ) Alexa(or Echo),turn on [bedroom light]
- ) Alexa(or Echo),turn off [bedroom light]
- ) Alexa(or Echo),set [bedroom light] to 50 percent
- ) Alexa(or Echo),increase [bedroom light] to 50 percent
- ) Alexa(or Echo),set [smart heater] to 34
- ) Alexa(or Echo),raise [smart heater] by 34
- ) Alexa(or Echo),lower [smart heater] by 2