

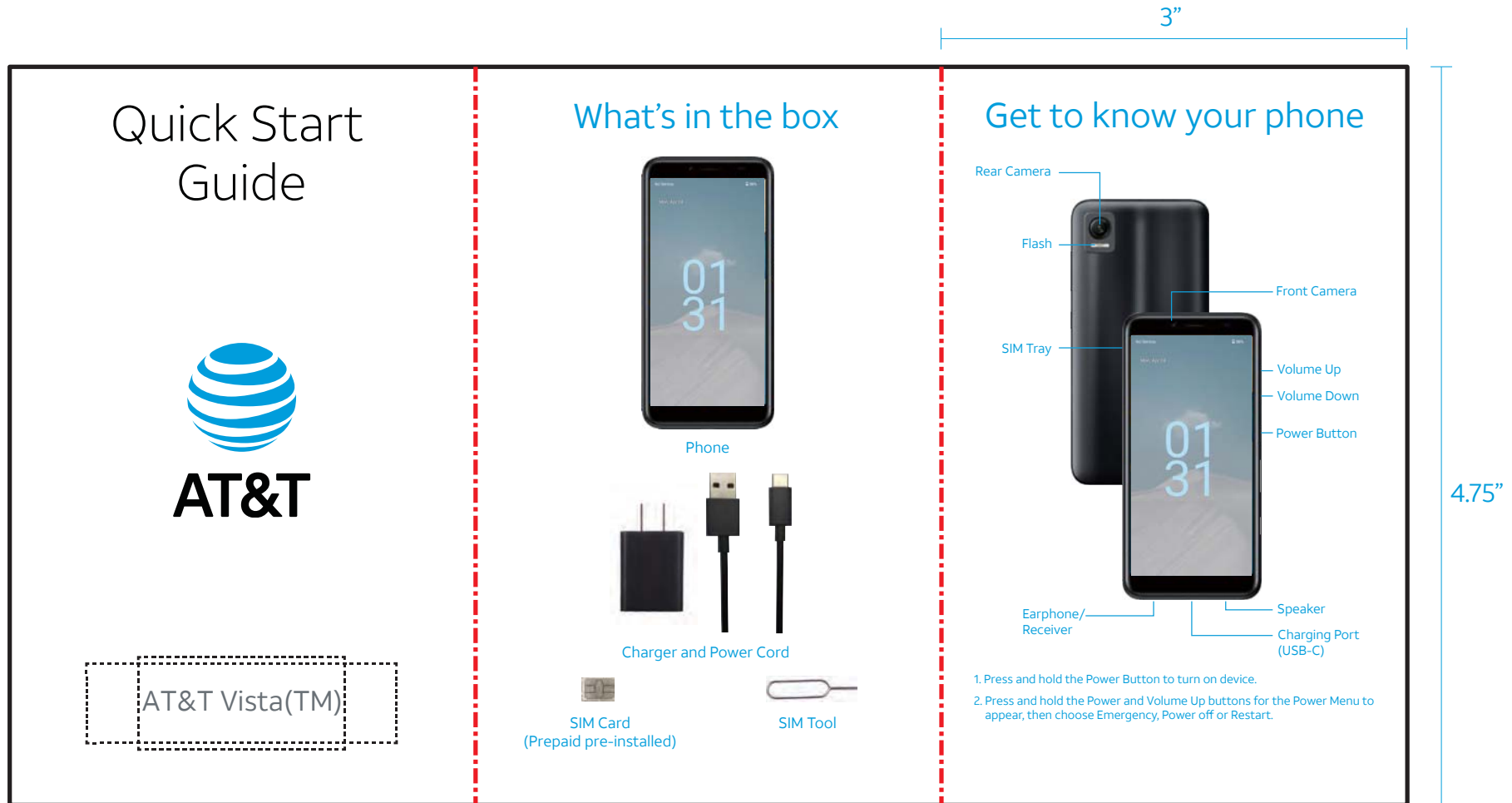
# AT&T - Getting Started Guide

SIDE - A

1 - COVER

2 - WHAT'S IN THE BOX

3 - DEVICE DIAGRAM



Replace "PHONE MODEL" with OEM device name/logo. Name/logo should remain within the dashed lines. Do not alter size or placement of AT&T globe logo.

Replace illustrations with device-specific images at similar sizes of current illustrations shown above.

Replace illustrations with device-specific images at similar sizes of current illustrations shown above. Placement of descriptions may need to be adjusted.

**NOTE:** All device illustrations need to be replaced with actual device images. All graphics, logos and text MUST be a minimum of 3/16" or 0.1875" away from folds and die cut edge.



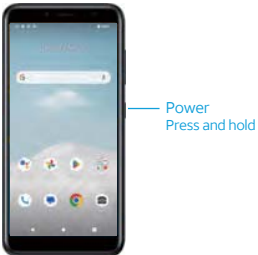
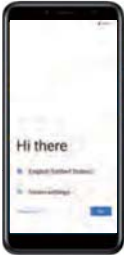
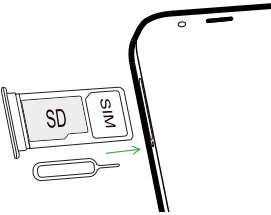
# AT&T - Getting Started Guide

## SIDE - B

### 4 - ACTIVATION

### 5 - GETTING STARTED

### 6 - MORE HELP

<h3>Need help?</h3> <p>Call our customer care team at <b>1-800-331-0500</b> or prepaid <b>1-800-901-9878</b></p> <hr/> <p>Learn more about your phone with the <b>Device Help</b> app</p>  <p>To launch the app, scan this code with your camera</p>  <p>or visit <a href="http://att.com/device-support">att.com/device-support</a></p> <p><small>©2023 AT&amp;T INTELLECTUAL PROPERTY. ALL RIGHTS RESERVED. AT&amp;T, the Globe and other marks are trademarks of AT&amp;T Intellectual Property. All other product or service names are the property of their respective owners.</small></p> <p><small>Printed in USA Emblem Part</small></p>	<h3>Get started</h3> <p>You may need your Google ID and password and Wi-Fi password</p> <h4>Power on device</h4>  <h4>Follow setup screens</h4> 	<h3>Get connected</h3> <p>Upgrading or replacing your phone? Transferring your number to AT&amp;T?</p> <p>If so, activate your phone at <a href="http://www.att.com/activations">www.att.com/activations</a></p> <hr/> <p>Your new phone might already have the SIM card inserted.</p> <p>If not, insert the SIM card as shown.</p> <ol style="list-style-type: none"><li>1. Use the SIM tool to open the SIM tray.</li><li>2. Insert the SIM card and MicroSD card in the correct slot. To get all the benefits of our network, make sure to use the SIM card that shipped with your new phone.</li></ol>  <p><b>Note: MicroSD card is sold separately.</b></p>
--	---	--

Replace illustrations with device-specific images/illustrations at similar sizes of current illustrations.

Replace first illustration with image of phone powered on/ Home Screen image and replace second illustration of phone with the first screen in setup flow.

**NOTE:** All device illustrations need to be replaced with actual device images. All graphics, logos and text MUST be a minimum of 3/16" or 0.1875" away from folds and die cut edge.