

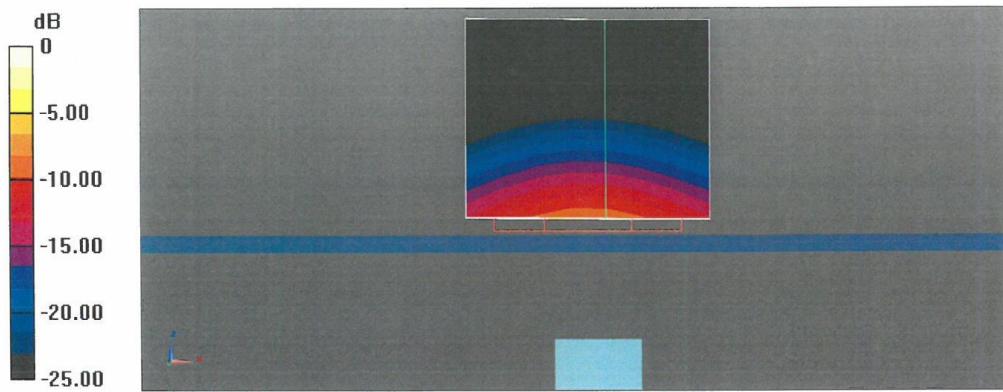
**Dipole Calibration for Head Tissue/Pin=100mW, dist=10mm, f=5300 MHz/Zoom Scan, dist=1.4mm (8x8x7)/Cube 0:** Measurement grid: dx=4mm, dy=4mm, dz=1.4mm  
Reference Value = 80.15 V/m; Power Drift = -0.02 dB  
Peak SAR (extrapolated) = 28.9 W/kg  
**SAR(1 g) = 8.25 W/kg; SAR(10 g) = 2.35 W/kg**  
Smallest distance from peaks to all points 3 dB below = 7.2 mm  
Ratio of SAR at M2 to SAR at M1 = 69.1%  
Maximum value of SAR (measured) = 19.1 W/kg

**Dipole Calibration for Head Tissue/Pin=100mW, dist=10mm, f=5500 MHz/Zoom Scan, dist=1.4mm (8x8x7)/Cube 0:** Measurement grid: dx=4mm, dy=4mm, dz=1.4mm  
Reference Value = 80.07 V/m; Power Drift = -0.01 dB  
Peak SAR (extrapolated) = 33.6 W/kg  
**SAR(1 g) = 8.80 W/kg; SAR(10 g) = 2.47 W/kg**  
Smallest distance from peaks to all points 3 dB below = 7.2 mm  
Ratio of SAR at M2 to SAR at M1 = 66.4%  
Maximum value of SAR (measured) = 20.9 W/kg

**Dipole Calibration for Head Tissue/Pin=100mW, dist=10mm, f=5600 MHz/Zoom Scan, dist=1.4mm (8x8x7)/Cube 0:** Measurement grid: dx=4mm, dy=4mm, dz=1.4mm  
Reference Value = 80.82 V/m; Power Drift = -0.00 dB  
Peak SAR (extrapolated) = 30.8 W/kg  
**SAR(1 g) = 8.45 W/kg; SAR(10 g) = 2.40 W/kg**  
Smallest distance from peaks to all points 3 dB below = 7.2 mm  
Ratio of SAR at M2 to SAR at M1 = 67.5%  
Maximum value of SAR (measured) = 19.9 W/kg

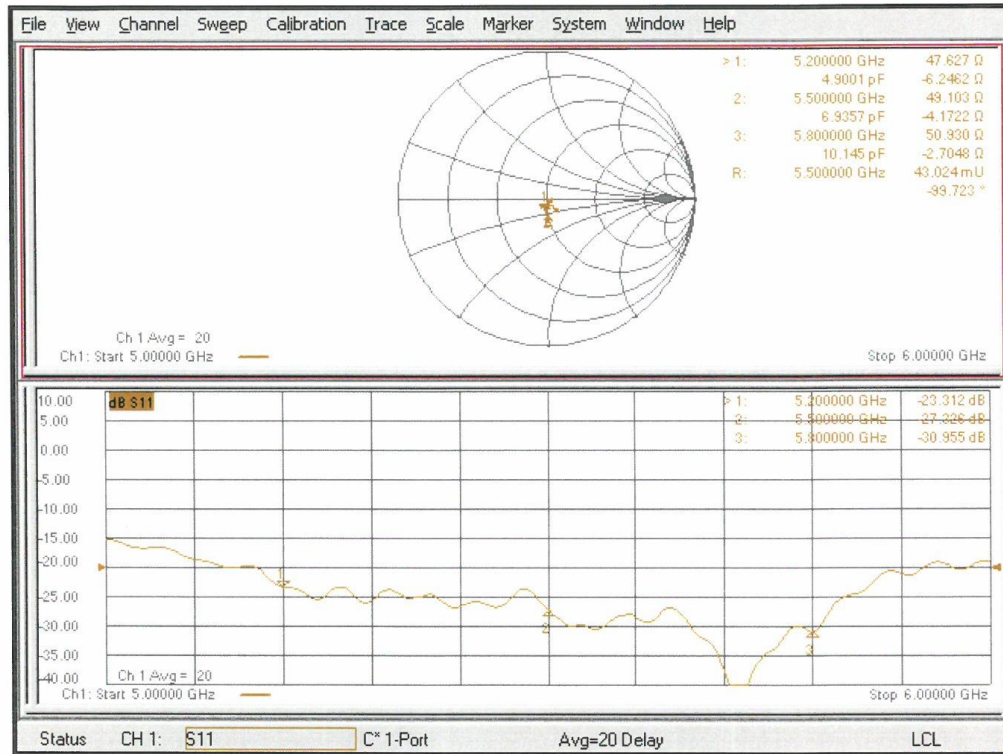
**Dipole Calibration for Head Tissue/Pin=100mW, dist=10mm, f=5750 MHz/Zoom Scan, dist=1.4mm (8x8x7)/Cube 0:** Measurement grid: dx=4mm, dy=4mm, dz=1.4mm  
Reference Value = 78.22 V/m; Power Drift = 0.01 dB  
Peak SAR (extrapolated) = 31.8 W/kg  
**SAR(1 g) = 8.18 W/kg; SAR(10 g) = 2.30 W/kg**  
Smallest distance from peaks to all points 3 dB below = 7.2 mm  
Ratio of SAR at M2 to SAR at M1 = 65.8%  
Maximum value of SAR (measured) = 19.5 W/kg

**Dipole Calibration for Head Tissue/Pin=100mW, dist=10mm, f=5800 MHz/Zoom Scan, dist=1.4mm (8x8x7)/Cube 0:** Measurement grid: dx=4mm, dy=4mm, dz=1.4mm  
Reference Value = 77.53 V/m; Power Drift = -0.02 dB  
Peak SAR (extrapolated) = 31.9 W/kg  
**SAR(1 g) = 8.19 W/kg; SAR(10 g) = 2.31 W/kg**  
Smallest distance from peaks to all points 3 dB below = 7.4 mm  
Ratio of SAR at M2 to SAR at M1 = 65.4%  
Maximum value of SAR (measured) = 19.2 W/kg

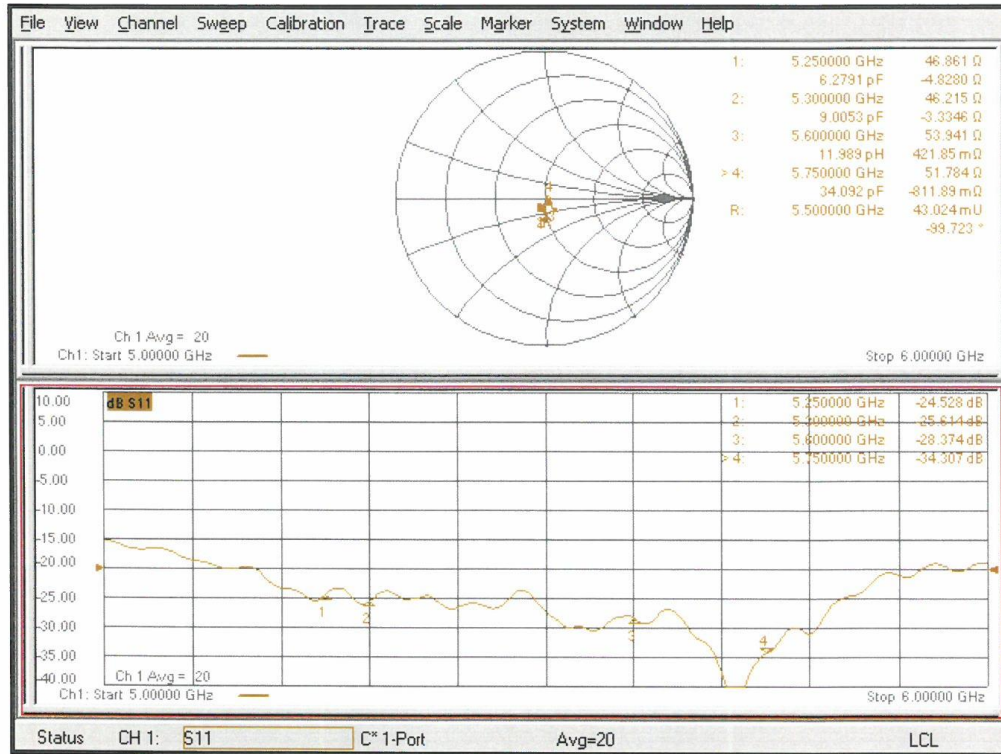


0 dB = 20.9 W/kg = 13.20 dBW/kg

### Impedance Measurement Plot for Head TSL (5200, 5500, 5800 MHz)

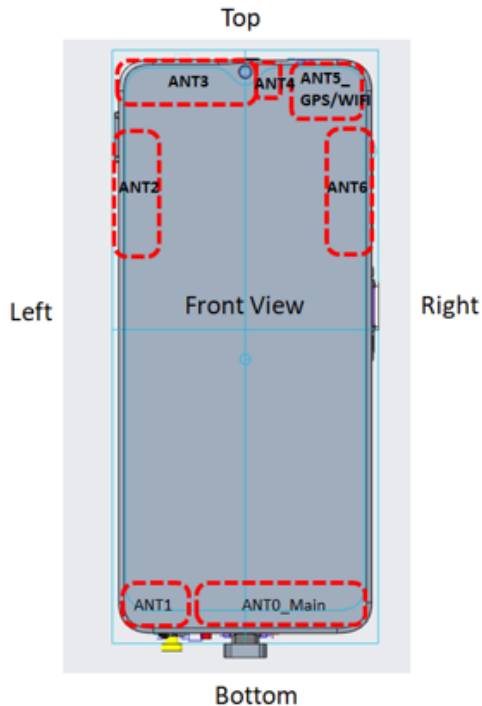


### Impedance Measurement Plot for Head TSL (5250, 5300, 5600, 5750 MHz)



## ANNEX I SAR Sensor Triggering Data Summary

### SAR sensor trigger distance



Distance test (mm)	PHx	PH0	PH1	PH2	PH4
	CSx	CS0	CS2	CS4	CS7
	ANTx	ANT0	ANT1	ANT3	ANT5
Front		17	17	17	17
Back		16	16	16	16
Top		NA	NA	12	12
Bottom		16	15	NA	NA
Left		NA	20	20	NA
Right		14	NA	NA	14

Per FCC KDB Publication 616217 D04v01r02, this device was tested by the manufacturer to determine the proximity sensor triggering distances for the rear and bottom edge of the device. The measured output power within  $\pm 5\text{mm}$  of the triggering points (or until touching the phantom) is included for rear and each applicable edge.

To ensure all production units are compliant it is necessary to test SAR at a distance 1mm less than the smallest distance from the device and SAR phantom (determined from these triggering tests according to the KDB 616217 D04v01r02) with the device at maximum output power without power reduction. These SAR tests are included in addition to the SAR tests for the device touching the SAR phantom, with reduced power.

We tested the power and got the different proximity sensor triggering distances for front/rear /bottom/right edge for ANT0. The manufacturer has declared 17mm/16mm/16mm/14mm is the most conservative triggering distance for ANT0 with front/rear/bottom/right edge. So base on the most conservative triggering distance of 17mm/16mm/16mm/14mm, additional SAR measurements were required at 16mm/15mm/15mm/13mm from the highest SAR position between front/rear/bottom/right edge of ANT0.

We tested the power and got the different proximity sensor triggering distances for front/rear



/bottom/left edge for ANT1. The manufacturer has declared 17mm/16mm/15mm/20mm is the most conservative triggering distance for ANT1 with front/rear/bottom/left edge. So base on the most conservative triggering distance of 17mm/16mm/15mm/20mm, additional SAR measurements were required at 16mm/15mm/14mm/19mm from the highest SAR position between front/rear/bottom/left edge of ANT1.

We tested the power and got the different proximity sensor triggering distances for front/rear /top/left edge for ANT3. The manufacturer has declared 17mm/16mm/12mm/20mm is the most conservative triggering distance for ANT3 with front/rear/top/left edge. So base on the most conservative triggering distance of 17mm/16mm/12mm/20mm, additional SAR measurements were required at 16mm/15mm/11mm/19mm from the highest SAR position between front/rear/top/left edge of ANT3.

We tested the power and got the different proximity sensor triggering distances for front/rear /top/right edge for ANT5. The manufacturer has declared 17mm/16mm/12mm/14mm is the most conservative triggering distance for ANT5 with front/rear/top/right edge. So base on the most conservative triggering distance of 17mm/16mm/12mm/14mm, additional SAR measurements were required at 16mm/15mm/11mm/13mm from the highest SAR position between front/rear/top/right edge of ANT5.



### ANT0:

#### Front Edge

Moving device toward the phantom:

sensor near or far(KDB 616217 6.2.6)											
Distance [mm]	22	21	20	19	18	17	16	15	14	13	12
Main antenna	Far	Far	Far	Far	Far	Near	Near	Near	Near	Near	Near

Moving device away from the phantom:

sensor near or far(KDB 616217 6.2.6)											
Distance [mm]	12	13	14	15	16	17	18	19	20	21	22
Main antenna	Near	Near	Near	Near	Near	Near	Far	Far	Far	Far	Far

#### Rear Edge

Moving device toward the phantom:

sensor near or far(KDB 616217 6.2.6)											
Distance [mm]	21	20	19	18	17	16	15	14	13	12	11
Main antenna	Far	Far	Far	Far	Far	Near	Near	Near	Near	Near	Near

Moving device away from the phantom:

sensor near or far(KDB 616217 6.2.6)											
Distance [mm]	11	12	13	14	15	16	17	18	19	20	21
Main antenna	Near	Near	Near	Near	Near	Near	Far	Far	Far	Far	Far

#### Bottom Edge

Moving device toward the phantom:

sensor near or far(KDB 616217 6.2.6)											
Distance [mm]	21	20	19	18	17	16	15	14	13	12	11
Main antenna	Far	Far	Far	Far	Far	Near	Near	Near	Near	Near	Near

Moving device away from the phantom:

sensor near or far(KDB 616217 6.2.6)											
Distance [mm]	11	12	13	14	15	16	17	18	19	20	21
Main antenna	Near	Near	Near	Near	Near	Near	Far	Far	Far	Far	Far

#### Right Edge

Moving device toward the phantom:

sensor near or far(KDB 616217 6.2.6)											
Distance [mm]	19	18	17	16	15	14	13	12	11	10	9
Main antenna	Far	Far	Far	Far	Far	Near	Near	Near	Near	Near	Near

Moving device away from the phantom:

sensor near or far(KDB 616217 6.2.6)											
Distance [mm]	9	10	11	12	13	14	15	16	17	18	19
Main antenna	Near	Near	Near	Near	Near	Near	Far	Far	Far	Far	Far

### ANT1:

#### Front Edge

Moving device toward the phantom:

sensor near or far(KDB 616217 6.2.6)											
Distance [mm]	22	21	20	19	18	17	16	15	14	13	12
Main antenna	Far	Far	Far	Far	Far	Near	Near	Near	Near	Near	Near

Moving device away from the phantom:

sensor near or far(KDB 616217 6.2.6)											
Distance [mm]	12	13	14	15	16	17	18	19	20	21	22
Main antenna	Near	Near	Near	Near	Near	Near	Far	Far	Far	Far	Far

#### Rear Edge

Moving device toward the phantom:

sensor near or far(KDB 616217 6.2.6)											
Distance [mm]	21	20	19	18	17	16	15	14	13	12	11
Main antenna	Far	Far	Far	Far	Far	Near	Near	Near	Near	Near	Near

Moving device away from the phantom:

sensor near or far(KDB 616217 6.2.6)											
Distance [mm]	11	12	13	14	15	16	17	18	19	20	21
Main antenna	Near	Near	Near	Near	Near	Near	Far	Far	Far	Far	Far

#### Bottom Edge

Moving device toward the phantom:

sensor near or far(KDB 616217 6.2.6)											
Distance [mm]	20	19	18	17	16	15	14	13	12	11	10
Main antenna	Far	Far	Far	Far	Far	Near	Near	Near	Near	Near	Near

Moving device away from the phantom:

sensor near or far(KDB 616217 6.2.6)											
Distance [mm]	10	11	12	13	14	15	16	17	18	19	20
Main antenna	Near	Near	Near	Near	Near	Near	Far	Far	Far	Far	Far

#### Left Edge

Moving device toward the phantom:

sensor near or far(KDB 616217 6.2.6)											
Distance [mm]	25	24	23	22	21	20	19	18	17	16	15
Main antenna	Far	Far	Far	Far	Far	Near	Near	Near	Near	Near	Near

Moving device away from the phantom:

sensor near or far(KDB 616217 6.2.6)											
Distance [mm]	15	16	17	18	19	20	21	22	23	24	25
Main antenna	Near	Near	Near	Near	Near	Near	Far	Far	Far	Far	Far



### ANT3:

#### Front Edge

Moving device toward the phantom:

sensor near or far(KDB 616217 6.2.6)											
Distance [mm]	22	21	20	19	18	17	16	15	14	13	12
Main antenna	Far	Far	Far	Far	Far	Near	Near	Near	Near	Near	Near

Moving device away from the phantom:

sensor near or far(KDB 616217 6.2.6)											
Distance [mm]	12	13	14	15	16	17	18	19	20	21	22
Main antenna	Near	Near	Near	Near	Near	Near	Far	Far	Far	Far	Far

#### Rear Edge

Moving device toward the phantom:

sensor near or far(KDB 616217 6.2.6)											
Distance [mm]	21	20	19	18	17	16	15	14	13	12	11
Main antenna	Far	Far	Far	Far	Far	Near	Near	Near	Near	Near	Near

Moving device away from the phantom:

sensor near or far(KDB 616217 6.2.6)											
Distance [mm]	11	12	13	14	15	16	17	18	19	20	21
Main antenna	Near	Near	Near	Near	Near	Near	Far	Far	Far	Far	Far

#### Top Edge

Moving device toward the phantom:

sensor near or far(KDB 616217 6.2.6)											
Distance [mm]	17	16	15	14	13	12	11	10	9	8	7
Main antenna	Far	Far	Far	Far	Far	Near	Near	Near	Near	Near	Near

Moving device away from the phantom:

sensor near or far(KDB 616217 6.2.6)											
Distance [mm]	7	8	9	10	11	12	13	14	15	16	17
Main antenna	Near	Near	Near	Near	Near	Near	Far	Far	Far	Far	Far

#### Left Edge

Moving device toward the phantom:

sensor near or far(KDB 616217 6.2.6)											
Distance [mm]	25	24	23	22	21	20	19	18	17	16	15
Main antenna	Far	Far	Far	Far	Far	Near	Near	Near	Near	Near	Near

Moving device away from the phantom:

sensor near or far(KDB 616217 6.2.6)											
Distance [mm]	15	16	17	18	19	20	21	22	23	24	25
Main antenna	Near	Near	Near	Near	Near	Near	Far	Far	Far	Far	Far

## ANT4/ANT5:

### Front Edge

Moving device toward the phantom:

sensor near or far(KDB 616217 6.2.6)											
Distance [mm]	22	21	20	19	18	17	16	15	14	13	12
Main antenna	Far	Far	Far	Far	Far	Near	Near	Near	Near	Near	Near

Moving device away from the phantom:

sensor near or far(KDB 616217 6.2.6)											
Distance [mm]	12	13	14	15	16	17	18	19	20	21	22
Main antenna	Near	Near	Near	Near	Near	Near	Far	Far	Far	Far	Far

### Rear Edge

Moving device toward the phantom:

sensor near or far(KDB 616217 6.2.6)											
Distance [mm]	21	20	19	18	17	16	15	14	13	12	11
Main antenna	Far	Far	Far	Far	Far	Near	Near	Near	Near	Near	Near

Moving device away from the phantom:

sensor near or far(KDB 616217 6.2.6)											
Distance [mm]	11	12	13	14	15	16	17	18	19	20	21
Main antenna	Near	Near	Near	Near	Near	Near	Far	Far	Far	Far	Far

### Top Edge

Moving device toward the phantom:

sensor near or far(KDB 616217 6.2.6)											
Distance [mm]	17	16	15	14	13	12	11	10	9	8	7
Main antenna	Far	Far	Far	Far	Far	Near	Near	Near	Near	Near	Near

Moving device away from the phantom:

sensor near or far(KDB 616217 6.2.6)											
Distance [mm]	7	8	9	10	11	12	13	14	15	16	17
Main antenna	Near	Near	Near	Near	Near	Near	Far	Far	Far	Far	Far

### Right Edge

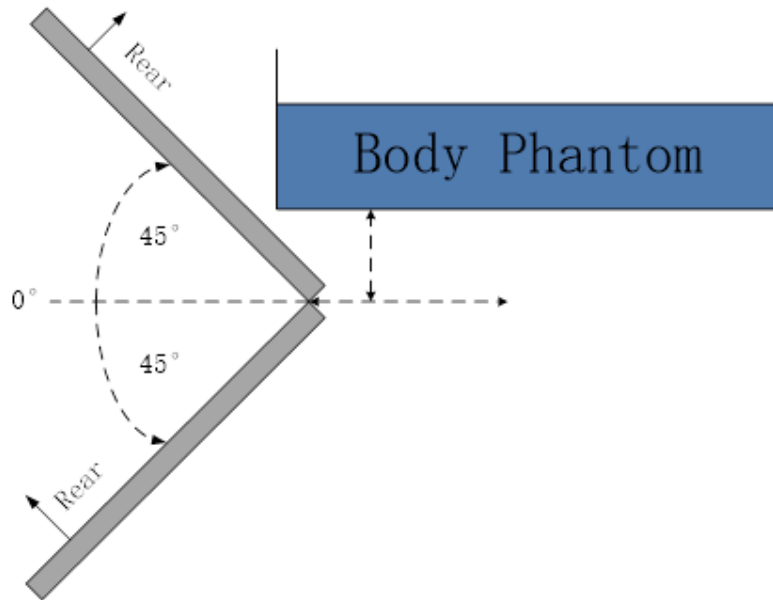
Moving device toward the phantom:

sensor near or far(KDB 616217 6.2.6)											
Distance [mm]	19	18	17	16	15	14	13	12	11	10	9
Main antenna	Far	Far	Far	Far	Far	Near	Near	Near	Near	Near	Near

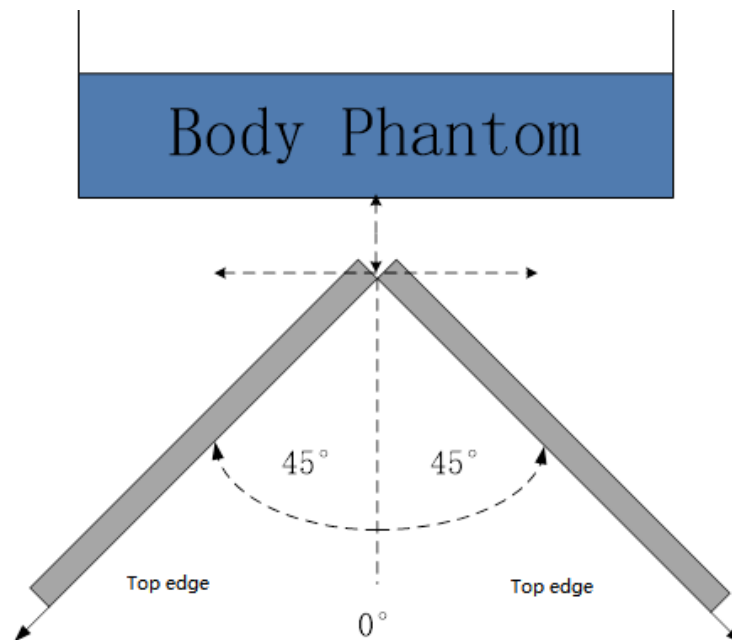
Moving device away from the phantom:

sensor near or far(KDB 616217 6.2.6)											
Distance [mm]	9	10	11	12	13	14	15	16	17	18	19
Main antenna	Near	Near	Near	Near	Near	Near	Far	Far	Far	Far	Far

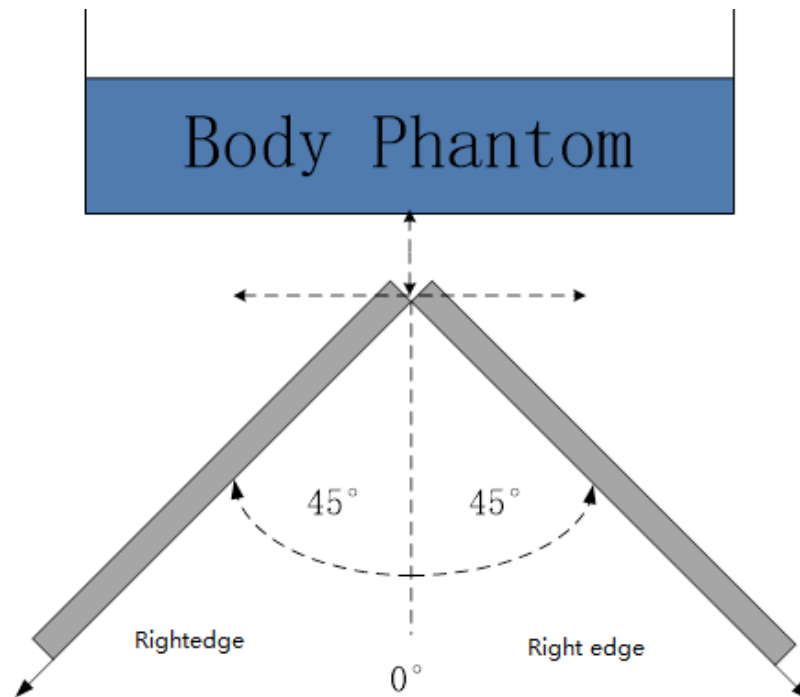
Per FCC KDB Publication 616217 D04v01r02, the influence of table tilt angles to proximity sensor triggering is determined by positioning each edge that contains a transmitting antenna, perpendicular to the flat phantom, at the smallest sensor triggering test distance by rotating the device around the edge next to the phantom in  $\leq 10^\circ$  increments until the tablet is  $\pm 45^\circ$  or more from the vertical position at  $0^\circ$ .



**The front/rear edge evaluation**



**The bottom/top edge evaluation**



#### The left/right edge evaluation

Based on the above evaluation, we come to the conclusion that the sensor triggering is not released and normal maximum output power is not restored within the  $\pm 45^\circ$  range at the smallest sensor triggering test distance declared by manufacturer.

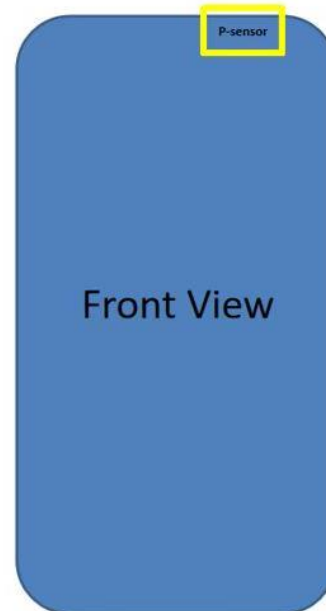
## ANNEX J P-Sensor Triggering Data Summary

### P-Sensor Trigger region

#### Receiver &P-sensor for Head SAR

1. The receiver works and the P-Sensor detects the object approaching (50mm)
2. The AP monitors the status changes of the handset and P-Sensor, and then performs interrupt processing with the defined keyValue
3. The upper layer according to the KeyValue, to execute (send AT instruction) to reduce/restore the antenna power.

Trigger area in yellow box



Per FCC KDB Publication 616217 D04v01r02, this device was tested by the manufacturer to determine the proximity sensor triggering distances for the rear and bottom edge of the device. The measured output power within  $\pm 5\text{mm}$  of the triggering points (or until touching the phantom) is included for rear and each applicable edge.

To ensure all production units are compliant it is necessary to test SAR at a distance 1mm less than the smallest distance from the device and SAR phantom (determined from these triggering tests according to the KDB 616217 D04v01r02) with the device at maximum output power without power reduction. These SAR tests are included in addition to the SAR tests for the device touching the SAR phantom, with reduced power.

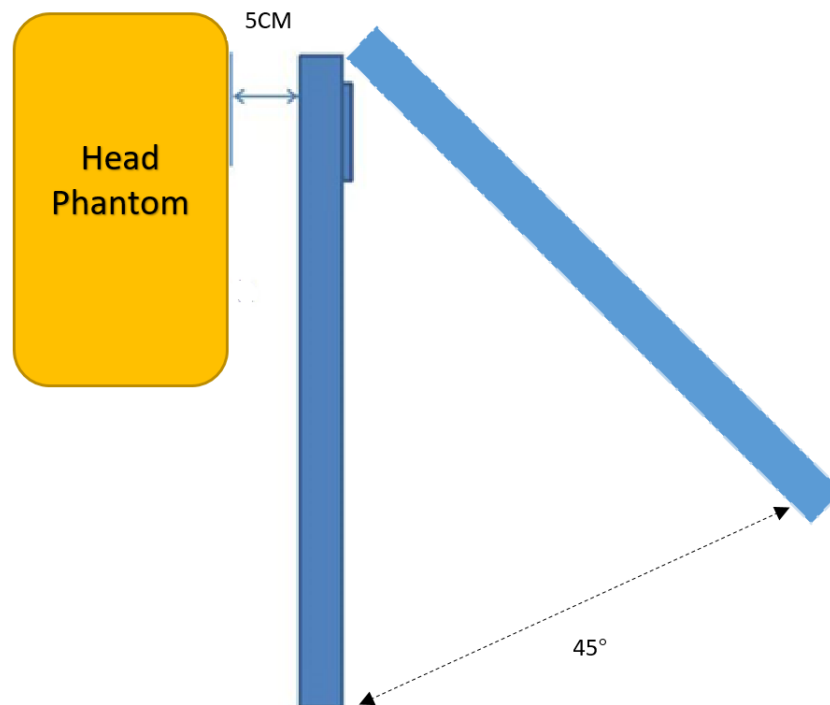
### Front Edge

Moving device toward the phantom:

sensor near or far(KDB 616217 6.2.6)											
Distance [mm]	55	54	53	52	51	50	49	48	47	48	47
Main antenna	Far	Far	Far	Far	Far	Near	Near	Near	Near	Near	Near

Moving device away from the phantom:

sensor near or far(KDB 616217 6.2.6)											
Distance [mm]	45	46	47	48	49	50	51	52	53	54	55
Main antenna	Near	Near	Near	Near	Near	Near	Far	Far	Far	Far	Far



The front edge evaluation



## ANNEX K Accreditation Certificate

United States Department of Commerce  
National Institute of Standards and Technology



### Certificate of Accreditation to ISO/IEC 17025:2017

NVLAP LAB CODE: 600118-0

**Telecommunication Technology Labs, CAICT**

Beijing  
China

*is accredited by the National Voluntary Laboratory Accreditation Program for specific services,  
listed on the Scope of Accreditation, for:*

**Electromagnetic Compatibility & Telecommunications**

*This laboratory is accredited in accordance with the recognized International Standard ISO/IEC 17025:2017.  
This accreditation demonstrates technical competence for a defined scope and the operation of a laboratory quality  
management system (refer to joint ISO-ILAC-IAF Communique dated January 2009).*

2021-09-29 through 2022-09-30

Effective Dates



  
For the National Voluntary Laboratory Accreditation Program