



The Photos of SAR test

No. I20N02441-SAR

For

Wingtech Group (Hongkong) Limited

Multi-band WCDMA/LTE MIFI with WLAN

Model Name: CT2MHS01

With

Hardware Version: 89323_1_21

Software Version: CT2MHS01_0.01.41

FCC ID: 2APXW-CT2MHS01

Note:

The test results in this test report relate only to the devices specified in this report. This report shall not be reproduced except in full without the written approval of SAICT.

Test Laboratory:

SAICT, Shenzhen Academy of Information and Communications Technology

Building G, Shenzhen International Innovation Center, No.1006 Shennan Road, Futian District, Shenzhen,

Guangdong, P. R. China 518026.

Tel: +86(0)755-33322000, Fax: +86(0)755-33322001

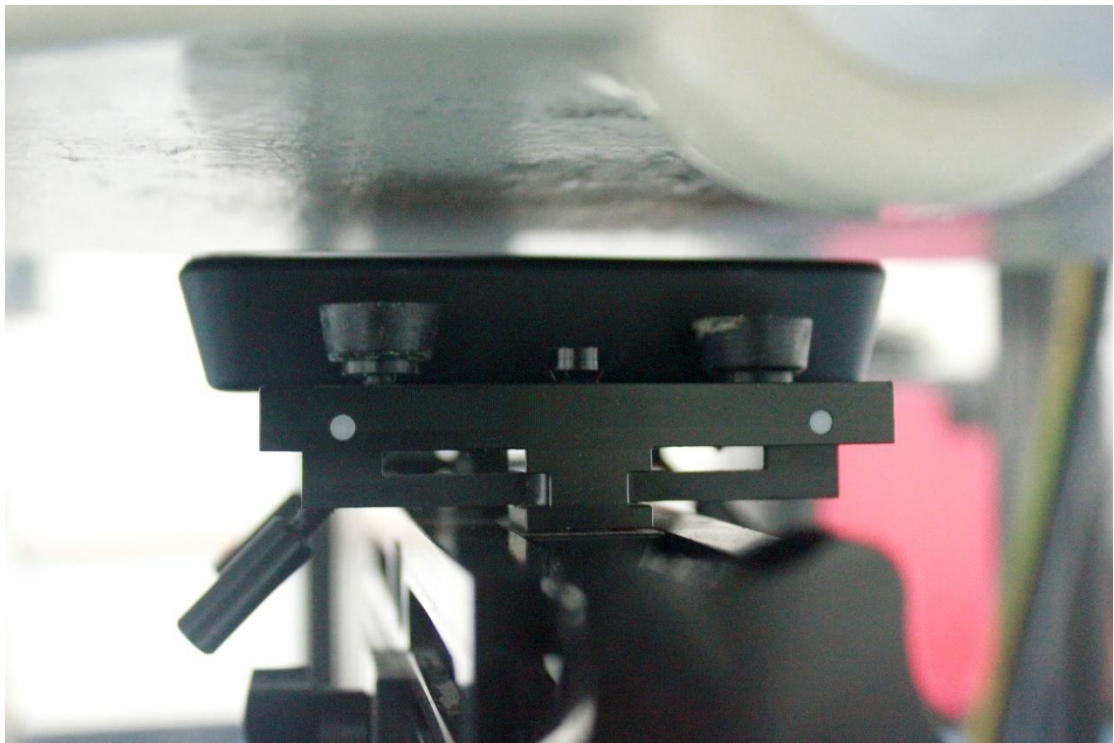
Email: yewu@caict.ac.cn. www.saict.ac.cn



Picture 1: Constituents of the sample

Test positions for body:

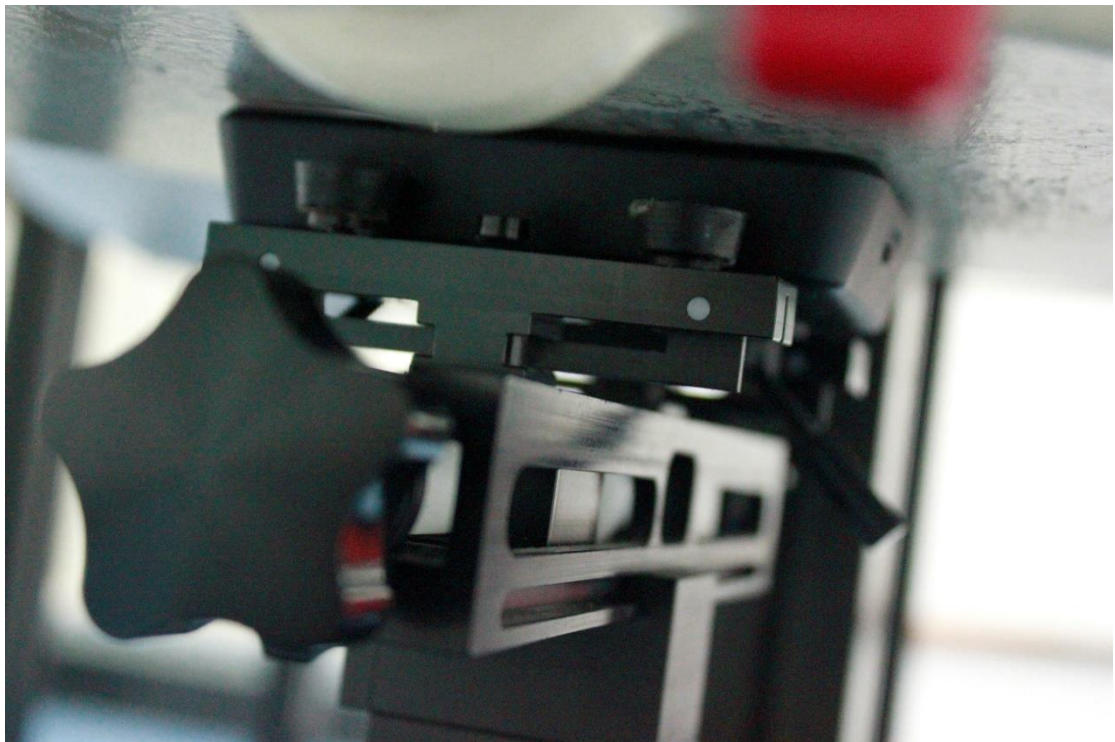
The Body SAR is tested at the following 14 test positions all with the distance =0/10/15mm between the EUT and the phantom bottom:



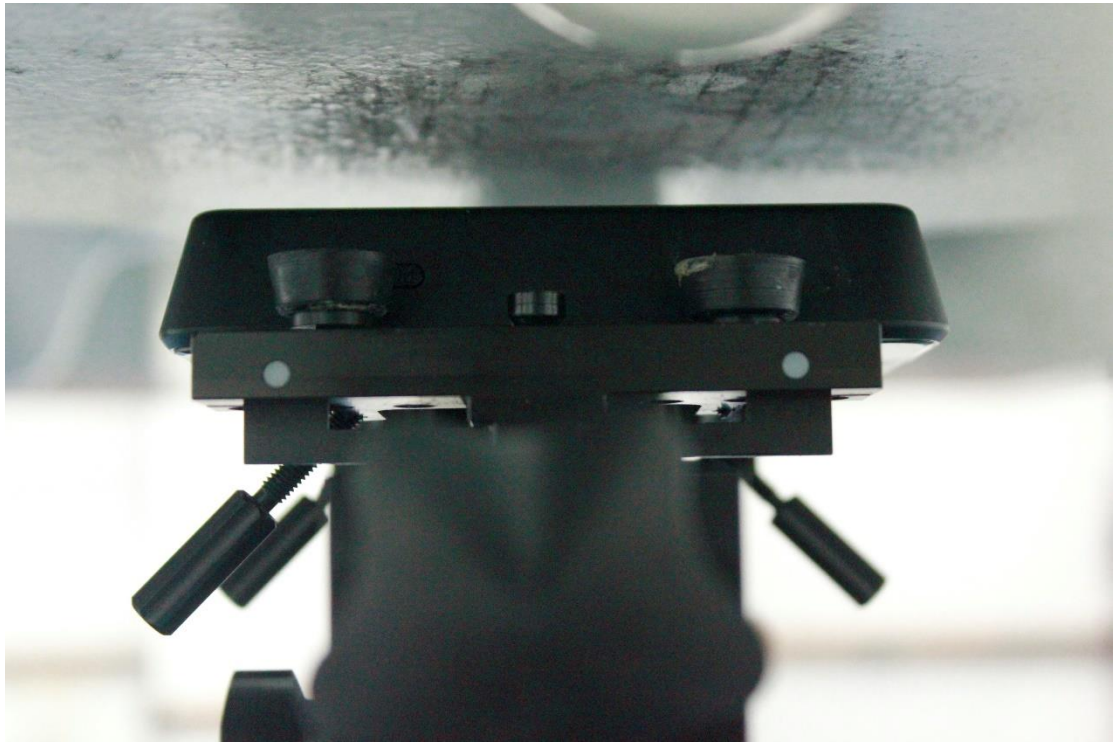
Picture 2: Front with 15mm



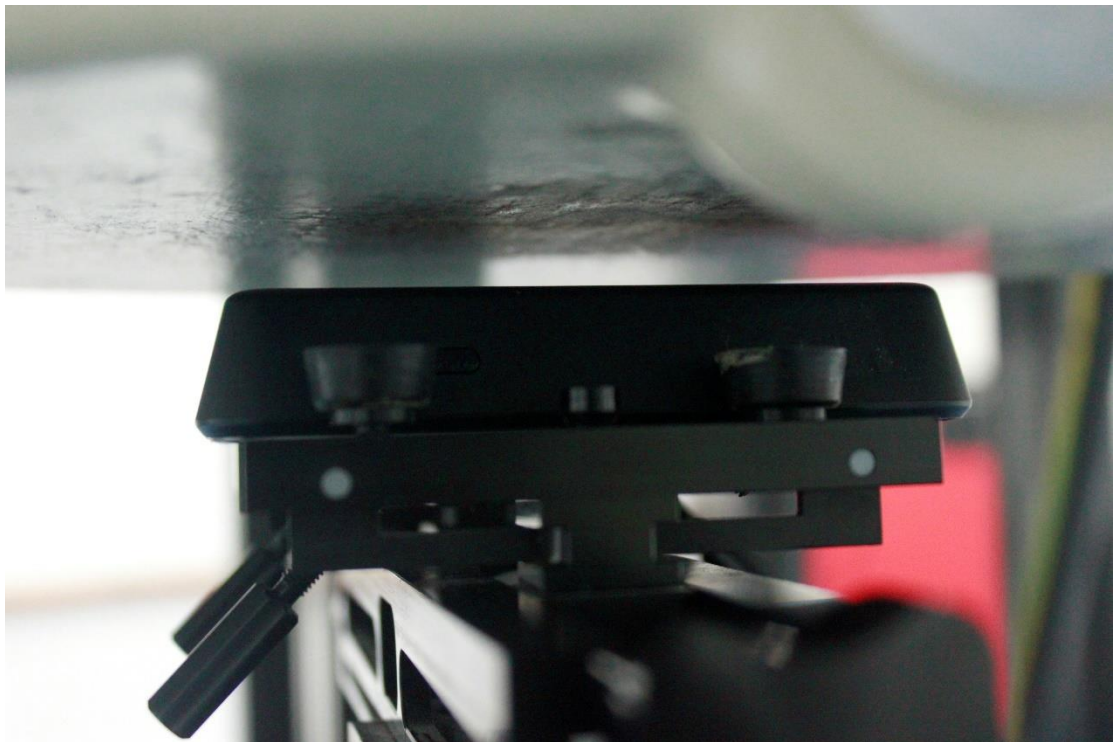
Picture 3: Front with 10mm



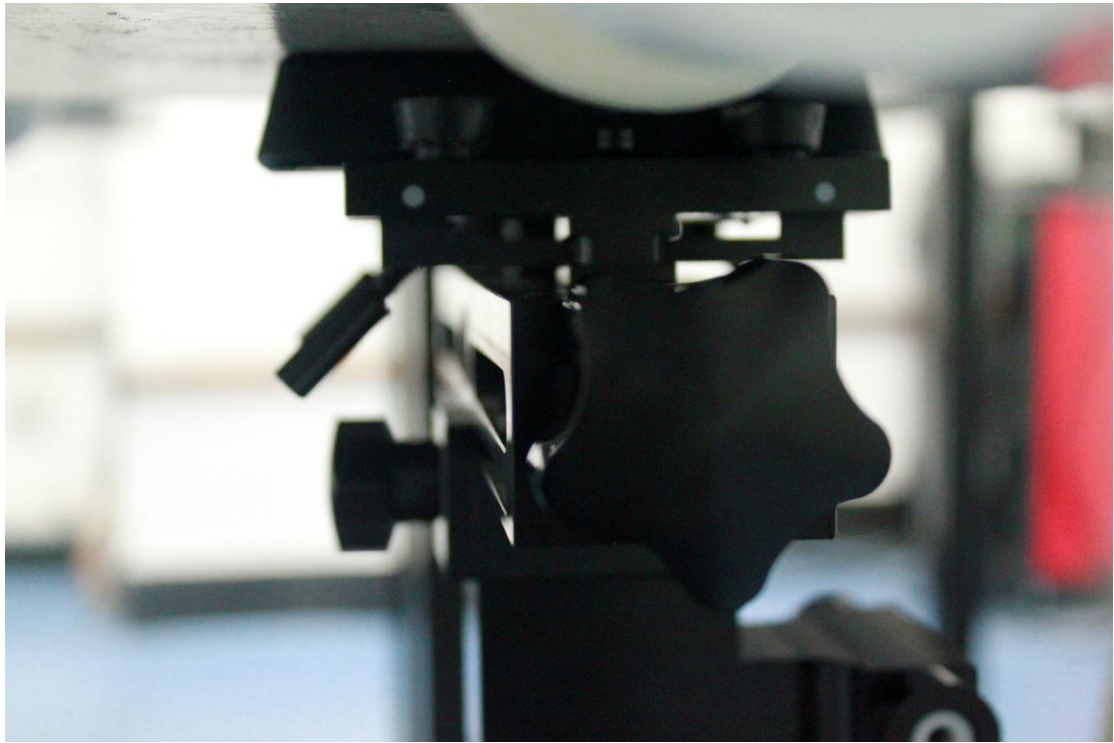
Picture 4: Front with 0mm



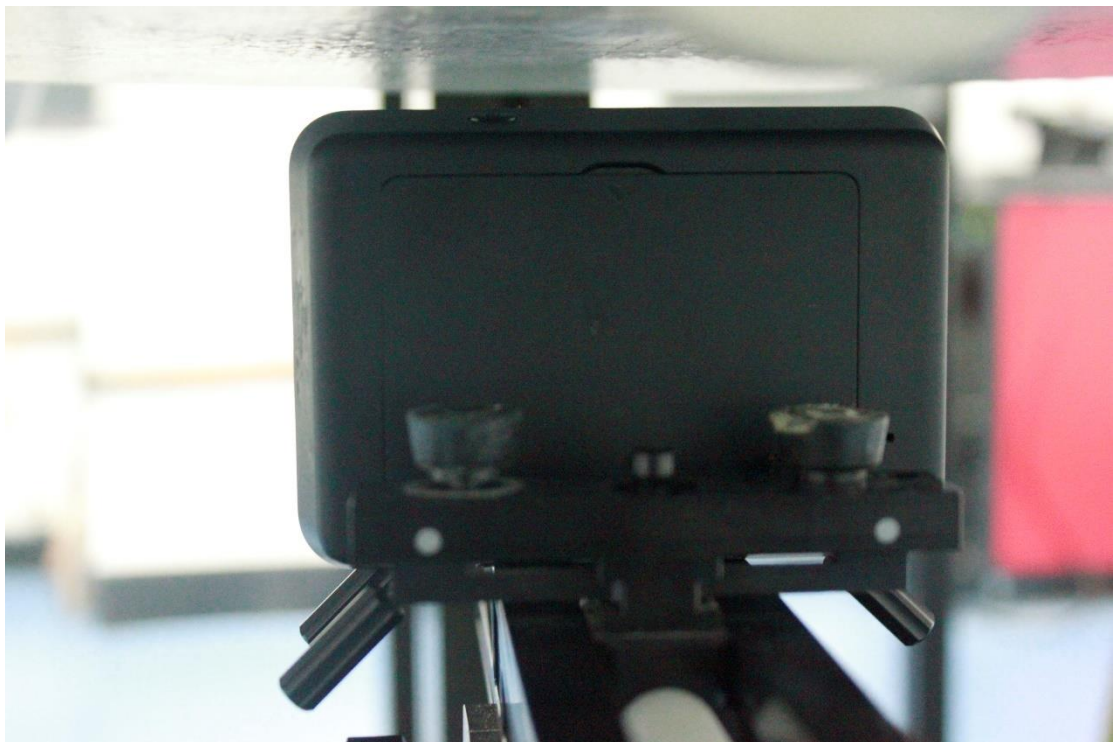
Picture 5: Rear with 10mm



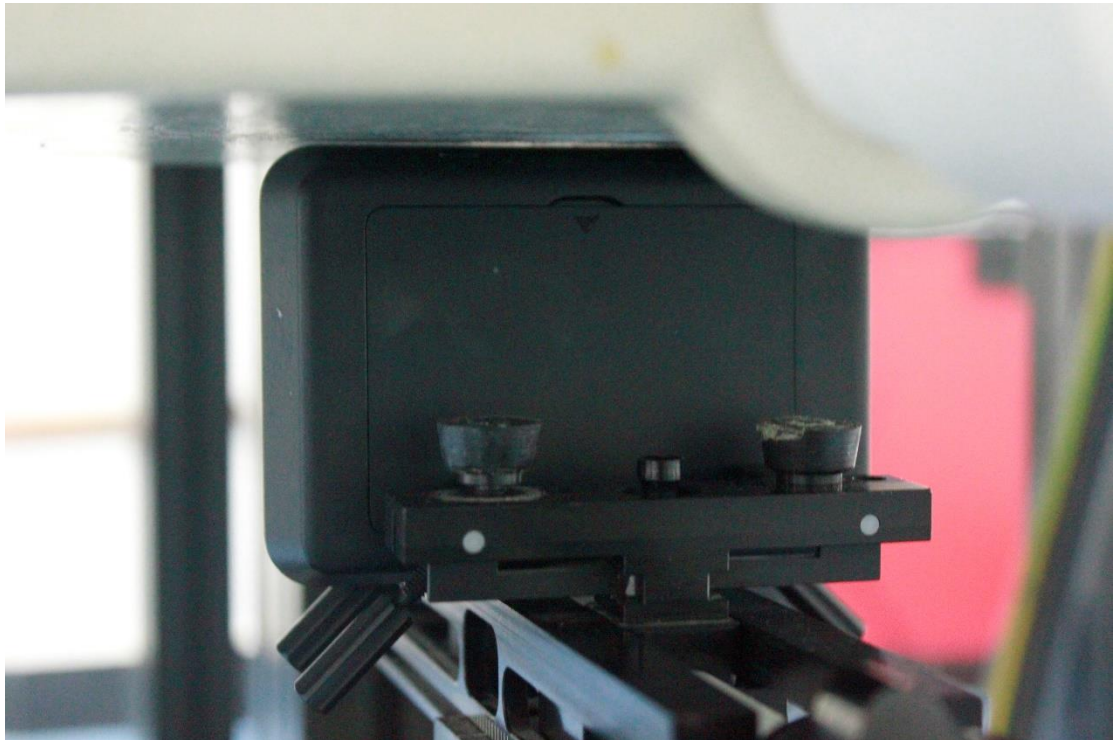
Picture 6: Rear with 15mm



Picture 7: Rear with 0mm



Picture 8: Left with 10mm



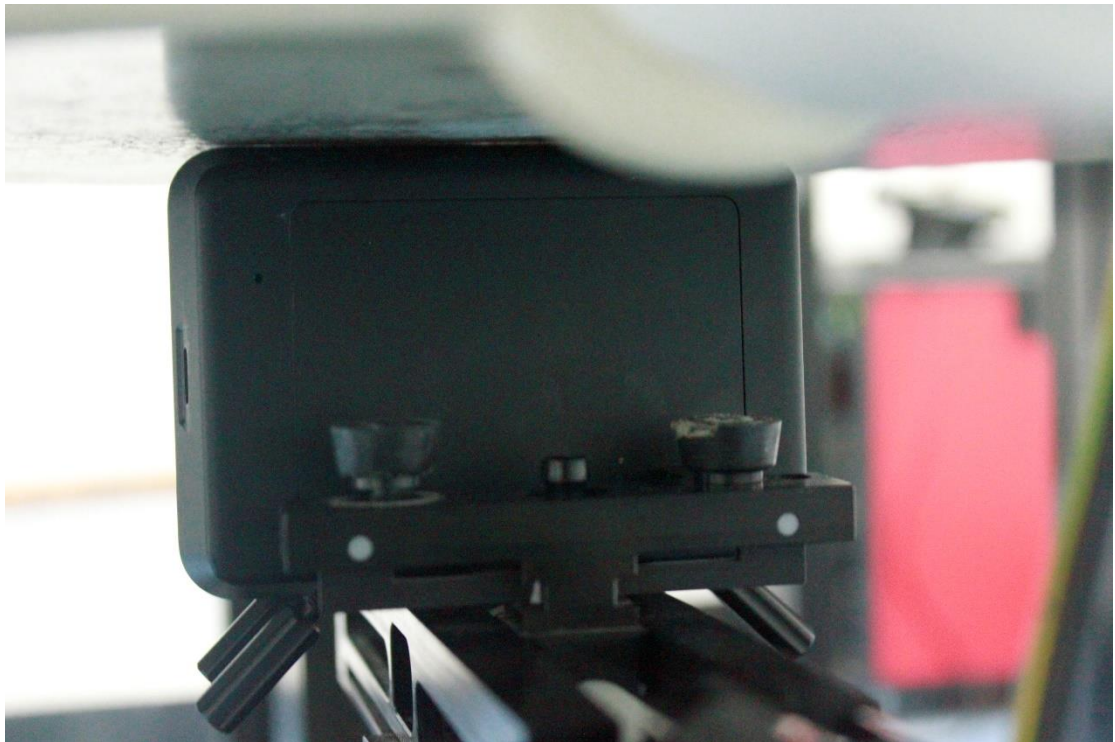
Picture 9: Left with 0mm



Picture 10: Right with 15mm



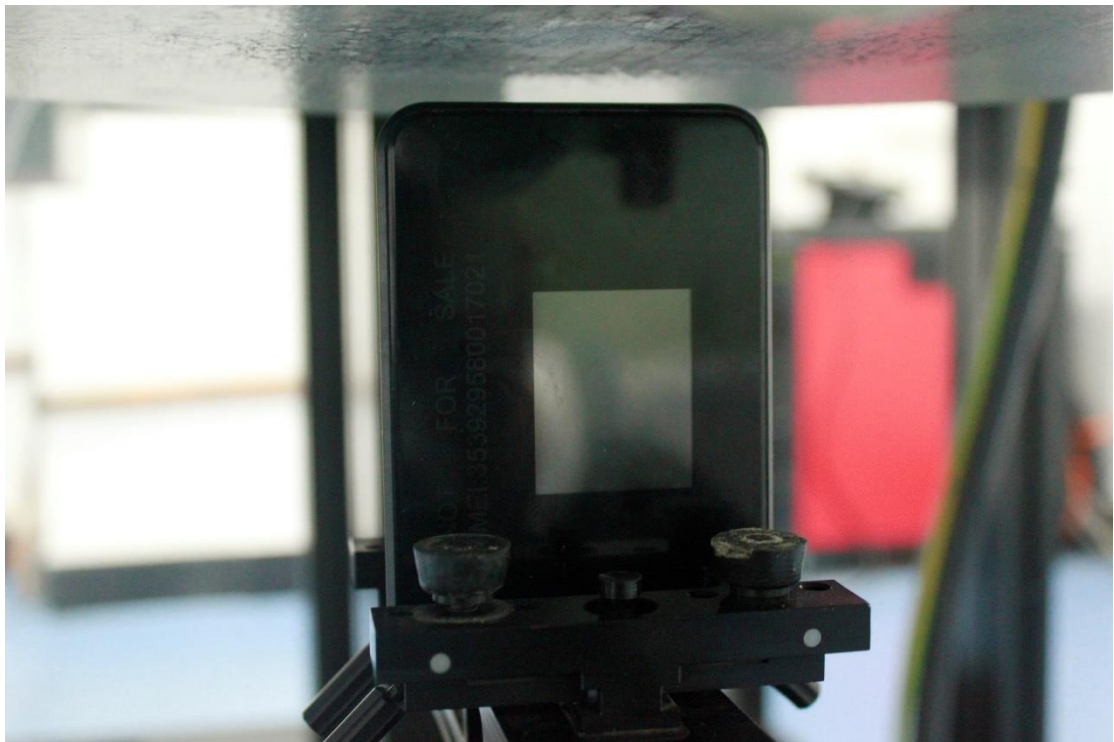
Picture 11: Right with 10mm



Picture 12: Right with 0mm



Picture 13: Top edge with 15mm



Picture 14: Top edge with 10mm



Picture 15: Top edge with 0mm