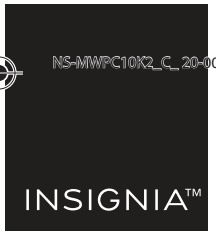


V1
FINAL
FOR PRINT

NS-MWPC10K2_C_20-0032_QSG_V1_EN_Final.ai 1 4/23/2020 10:35:00 AM



QUICK SETUP GUIDE

10 Watt Two Device Qi Charging Station

NS-MWPC10K2 / NS-MWPC10K2-C

Before using your new product, please read these instructions to prevent any damage.

Flat size (W×H): 12 × 2.75 in. (304.8 x 69.85 mm)
Final folded size: 3 × 2.75 in. (76.2 x 69.85 mm)

PACKAGE CONTENTS

- 10 W Two Device Qi Charging Station
- 3 ft. (0.9 m) charging cable with power adapter
- *Quick Setup Guide*

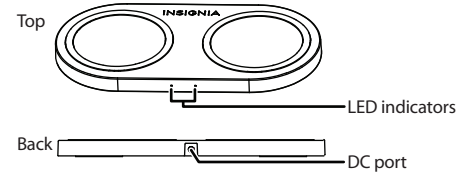
COMPATIBILITY

Any Qi-enabled devices including smartphones, headphones, smart watches.

FEATURES

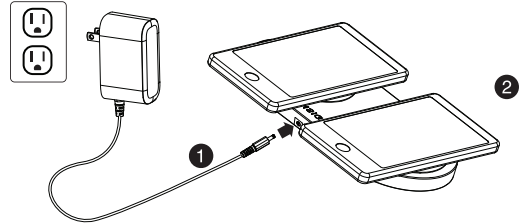
- Dual 10 W charging zones (20 W total) power two devices at once
- Flat surface charges a range of devices, including headphones
- Compact design ideal for your nightstand, desktop, or while traveling
- Blue LEDs show that your devices are charging
- Wirelessly charges most Qi-enabled devices (including Apple® and Samsung®) without cumbersome cords

PRODUCT OVERVIEW



USING YOUR CHARGING PAD

- 1 Plug the power adapter into your charging station and into a power outlet.



- 2 Place your Qi-enabled device on the center of one of the charging pads with the screen facing up. The LED is blue when your device is charging.

Notes: You can charge two devices at the same time. If the LED is red, your device is not charging. See "TROUBLESHOOTING" for more information.

CAUTION: Do not place a credit or debit card on a charging pad.

LED INDICATOR STATUS

LED	STATUS
Blinking blue	Standby
Solid blue	5W Charging
Blue and red both on	Quick charging
Solid red	Insufficient input power
Blinking red	Charging error

TROUBLESHOOTING

Device not charging/LED is red

- Make sure that your device is Qi-enabled.
- Make sure that your charging station is connected to a working power outlet.
- Make sure that your device is positioned correctly on the charging pad.
- Make sure that there are no other objects on the charging pads.
- Remove your device's case. It may be blocking the wireless signal.



Device charges slowly

- Your device may charge more slowly with your charging station than a charging cable. This is normal behavior.
- Make sure that your device is positioned in the center of a charging pad.

CAUTION: Only use the cable with the attached power adapter that came with your charger. Using a different cable and adapter can decrease charging performance or damage your charger.

SPECIFICATIONS

Qi Wireless Charging Pads:

Input: 15 V/1.8 A max.

Output: 10 W max. per charging pad

Dimensions: 7 x 3.5 x 0.4 in. (178 x 90 x 10.6 mm)

AC power adapter:

Input: 100-240V ~ 50/60 Hz 0.7 A

Output: DC 15 V/1.8 A

Charging cable: 3 ft. (0.9 m)



LEGAL NOTICES

FCC Information

FCC Caution: Changes or modifications not expressly approved by the party responsible for compliance could void the user's authority to operate the equipment.

FCC Statement: This equipment has been tested and found to comply with the limits for a Class B digital device, pursuant to part 15 of the FCC Rules. These limits are designed to provide reasonable protection against harmful interference in a residential installation. This equipment generates, uses, and can radiate radio frequency energy and, if not installed and used in accordance with the instructions, may cause harmful interference to radio communications. However, there is no guarantee that interference will not occur in a particular installation. If this equipment does cause harmful interference to radio or television reception, which can be determined by turning the equipment off and on, the user is encouraged to try to correct the interference by one or more of the following measures:

- Reorient or relocate the receiving antenna.
- Increase the separation between the equipment and receiver.
- Connect the equipment into an outlet on a circuit different from that to which the receiver is connected.
- Consult the dealer or an experienced radio/TV technician for help.

FCC statement: This device complies with part 15 of the FCC Rules. Operation is subject to the following two conditions: (1) This device may not cause harmful interference, and (2) this device must accept any interference received, including interference that may cause undesired operation. This equipment complies with FCC radiation exposure limits set forth for an uncontrolled environment. This equipment should be installed and operated with minimum distance 20cm between the radiator and your body. This transmitter must not be co-located or operating in conjunction with any other antenna or transmitter.

RSS-Gen statement:

This device contains licence-exempt transmitter(s)/receiver(s) that comply with Innovation, Science and Economic Development Canada's licence-exempt RSS(s). Operation is subject to the following two conditions:

- (1) This device may not cause interference.
- (2) This device must accept any interference, including interference that may cause undesired operation of the device.

L'émetteur/récepteur exempt de licence contenu dans le présent appareil est conforme aux CNR d'Innovation, Sciences et Développement économique Canada applicables aux appareils radio exempts de licence. L'exploitation est autorisée aux deux conditions suivantes :

- (1) L'appareil ne doit pas produire de brouillage;
- (2) L'appareil doit accepter tout brouillage radioélectrique subi, même si le brouillage est susceptible d'en compromettre le fonctionnement.

This equipment complies with IC RSS-102 radiation exposure limits set forth for an uncontrolled environment. This equipment should be installed and operated with minimum distance 20cm between the radiator and your body.

Cet équipement est conforme aux limites d'exposition aux radiations IC CNR-102 établies pour un environnement non contrôlé. Cet équipement doit être installé et utilisé avec une distance minimale de 20 cm entre le radiateur et votre corps.

SAFETY INFORMATION

- Avoid dropping.
- Do not disassemble.
- Do not place metal objects between devices and the wireless charging pads.
- Thick protective case (≥ .2 in. [5 mm]) or a case that includes a magnet or metallic material, may not allow proper charging function.
- Keep wireless charging pad away from any liquid or moisture.
- The maximum ambient temperature during use of this product must not exceed 113° F (45° C).
- Do not place this device in fire or other excessively hot environments.
- Must use provided adapter for proper function, if not it may be malfunction.

ONE-YEAR LIMITED WARRANTY

Visit www.insigniaproducts.com for details.

CONTACT INSIGNIA:

1-877-467-4289 (U.S. and Canada)

1-800-926-3000 (Mexico)

www.insigniaproducts.com

INSIGNIA is a trademark of Best Buy and its affiliated companies

Distributed by Best Buy Purchasing, LLC

7601 Penn Ave South, Richfield, MN 55423 U.S.A.

©2020 Best Buy. All rights reserved.

