

Shenzhen Anwei Wireless Technology Co., Ltd

Specification

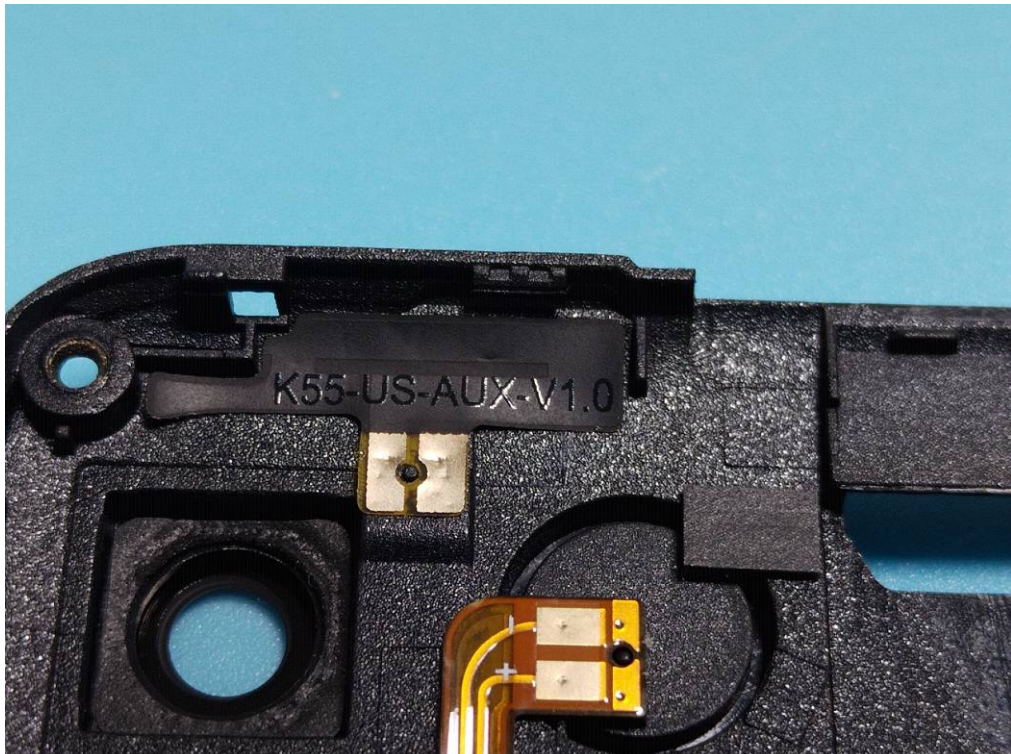
客户 Customer	EBOT	规格型号 Specs	K55B1 (K56)
三好料号 Part Number	K55B1-01 K55B1-02 K55B1-03	频段 Frequency Band	BT&2.4G WIFI:2400~2483.5MHZ GSM850/900/1800/1900 WCDMA1/2/5/8 B2.3.4.5.7.8.12.17.28
颜色 Color	black	版本 Edition	REV:A1
销售 Salesperson		设计 Design	叶金强 Jinqiang Ye
结构 Structure	李富伦 Fulun Li	确认 Confirm	周武 Wu Zhou
日期 Date		签字日期 Signing Date	
客户确认 Customer confirmation:			
Join hands to create the future			

深圳市三好无线通信有限公司 Shenzhen Sanhao Wireless Communication Co., LTD

深圳市宝安区大宝路 49-1 号金富来大厦 501-508

501-508, Jinfulai Building, No. 49-1 Dabao Road, Bao 'an District, Shenzhen

Aux Antenna



Bluetooth/Wi-Fi Antenna



2G/3G/4G Main Antenna

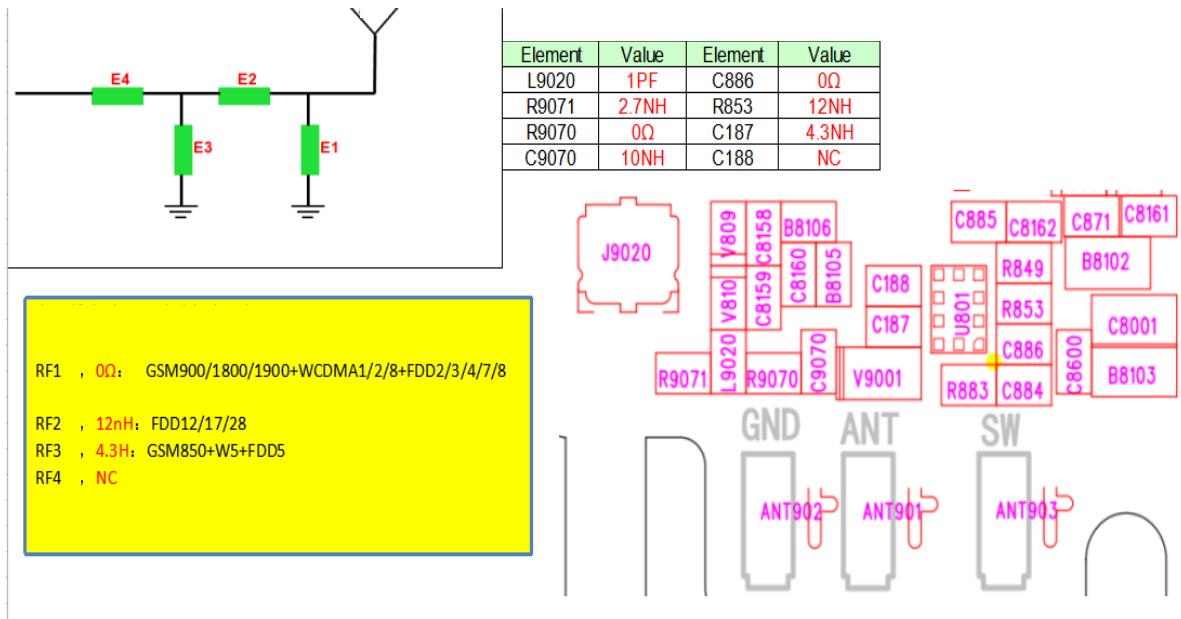


二、Electrical performance

1.Specifications

The operating frequency band of K55B1 antenna is 699~960MHZ and 1710~2700MHZ, in which resonance occurs.

2.Matching circuit of antenna

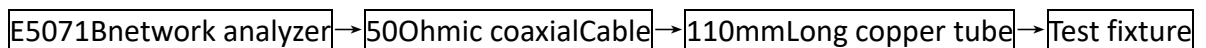


Structure of antenna: FPC

三、Test of parameters

1.Test settings

The connection of VSWR test device is:



Treatment of test fixture:

Use a hard cable to lead out the SMA-J connector from the 50 ohm test point of the antenna on the mobile phone PCB, connect it to the copper tube with a choke, and then connect other devices in turn.

Passive parameters of main antenna:

工作频段(Working frequency band): 699~960MHZ, 1710~2700MHZ

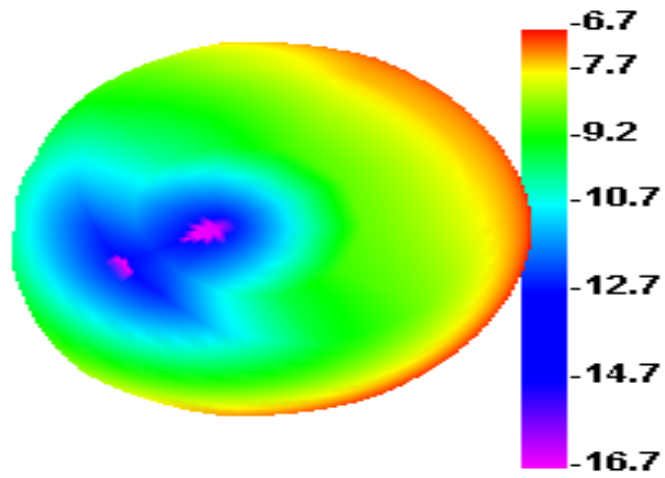
GSM850/900/1800/1900

WCDMA1/2/5/8/

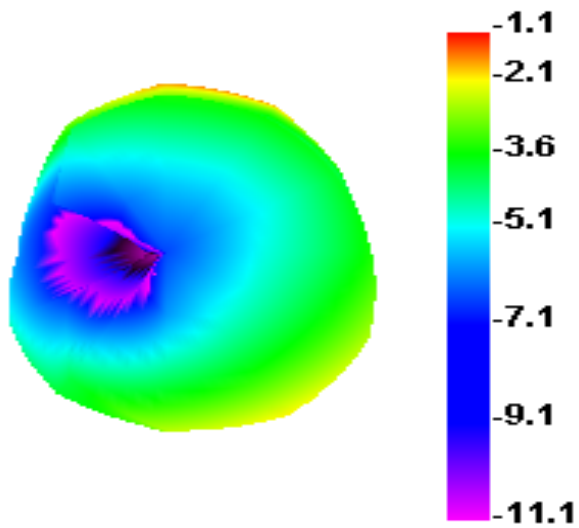
BC1 B2.3.4.5.7.8.12.17.28

Gain	
频段 Band	gain 增益 (dBi)
LTE-B12/B17/B28	-2.35
GSM850,WCDMA-B5,LTE-B5	-2.18
GSM900,WCDMA-B8,LTE-B8	-1.96
DCS1800,LTE-B3,	-0.13
LTE-B4	0.53
PCS1900,WCDMA-B2,LTE-B2	0.92
WCDMA-B1	-1.98
LTE-B7	-0.97
GPS	-0.25
2.4G WIFI/BT	0.19

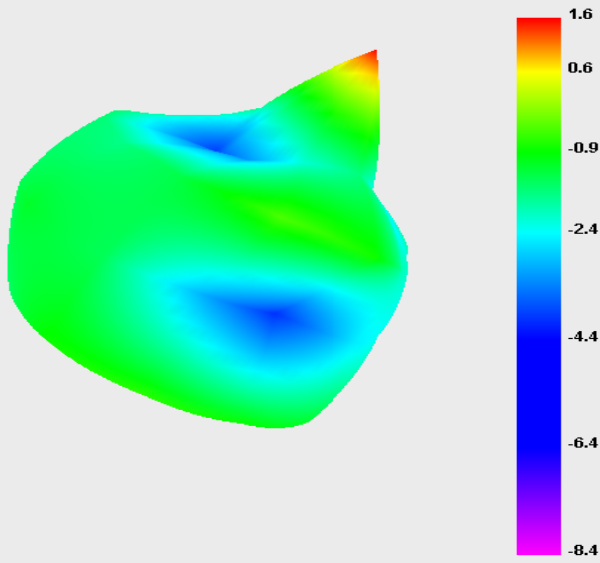
810.000MHz



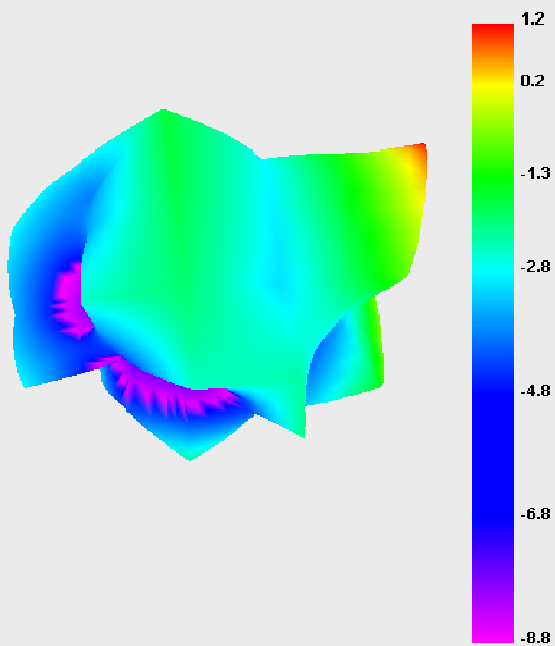
1700.000MHz



1900.000MHz

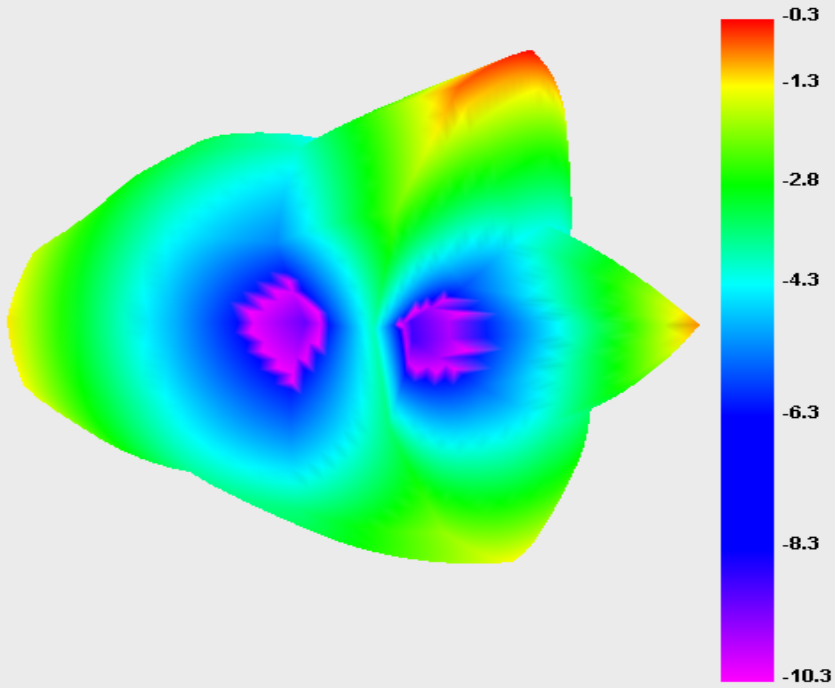


2600.000MHz



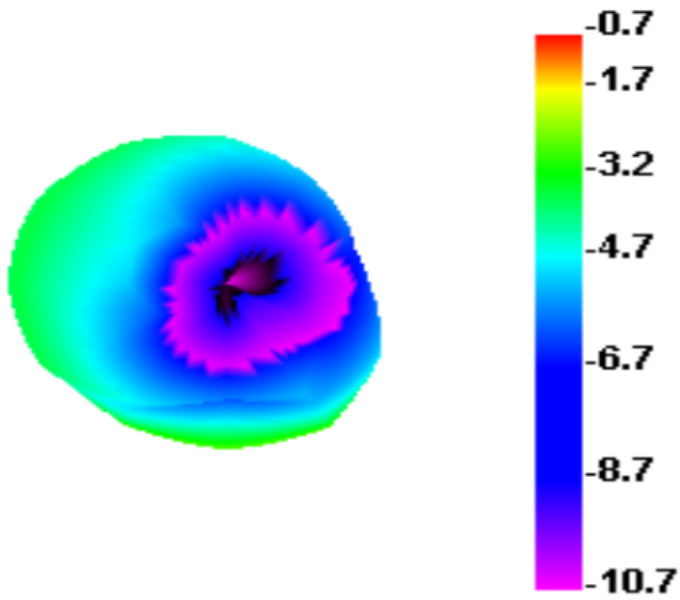
1575.000MHz

GPS



2410.000MHz

2.4G-wifi



GPS/WIFI/BTPassive parameters of antenna:

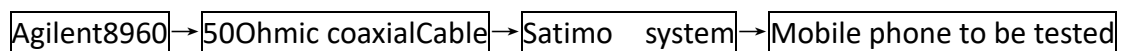
工作频段(Working frequency band): 1560~1580MHZ, 2400~2500MHZ

2.test result

business as usual.

四、 Active test setup

The active test devices are sequentially connected as follows:



1.Test site

AW microwave anechoic chamber: the test frequency range is 400MHz - 6GHz, the quiet zone range is 40cm circumference, and the reflectivity is less than - 90 dB.

2.test result

The maximum radiation power and maximum receiving sensitivity reflect the maximum power radiation value and the optimal receiving performance of the antenna in the entire radiation space. TRP and TIS reflect the average radiation power and average receiving sensitivity of the antenna, that is, the overall receiving performance of the antenna.

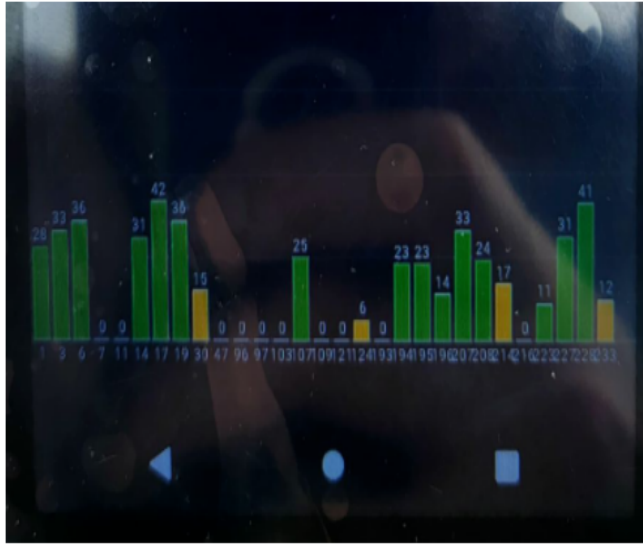
The following is the active test result of K55B1mobile phone main antenna:

2G	CH	TRP	TIS
GSM850	128	25.64	
	190	26.45	
	251	26.71	-101.39
EGSM900	1	25.93	
	62	26.42	
	124	26.46	-101.88
DCS1800	512	23.87	
	698	24.56	
	885	25.62	-105.17
PCS1900	512	25.63	
	661	25.59	
	810	25.32	-104.53

3G	CH	TRP	TIS
WCDMA1	10562	18.23	
	10700	17.69	
	10838	17.53	-103.29
WCDMA2	9662	18.46	
	9800	18.03	
	9938	17.53	-103.16
WCDMA5	4357	16.23	
	4408	16.53	
	4458	17.02	-100.36
WCDMA8	2937	16.89	
	3013	16.75	
	3088	16.69	-101.28

4G	CH	TRP	TIS
FDD-B2	18650	18.92	
	18900	18.58	
	19150	18.23	-92.95
FDD-B3	19250	17.16	
	19575	18.05	
	19900	19.25	-93.54
FDD-B4	20000	17.18	
	20175	17.23	
	20350	18.68	-93.1
FDD-B5	20450	16.26	
	20525	16.87	
	20600	17.09	-89.67
FDD-B7	20800	17.31	
	21100	16.46	
	21400	15.61	-90.78
FDD-B8	21500	17.25	
	21625	16.69	
	21750	16.38	-87.05
FDD-B12	23060	16.59	
	23095	17.18	
	23130	17.65	-90.86
FDD-B17	23780	16.57	
	23790	17.3	
	23800	17.65	-90.53
FDD-B28	27260	16.39	
	27435	16.72	
	27610	17.63	
	27410	16.58	
	27510	17.21	-90.03

2-1.Three in one test results



GPS	最大信号强度	搜星数量	平均定位时间	
	42	19	96S	晴天
WIFI	正常上网距离		在线视频流畅距离	
	10M		10M	
BT场测	连接蓝牙听歌15米无卡顿。			

		TRP	TIS
wifi-B	1	10.69	-72.25
	7	10.85	-72.96
	13	10.56	-72.36

2-2. 蓝牙测试 (Bluetooth Test) :

10 meters online listening to music, making calls smoothly without interruption