

EXHIBIT C - EUT INTERNAL PHOTOGRAPHS

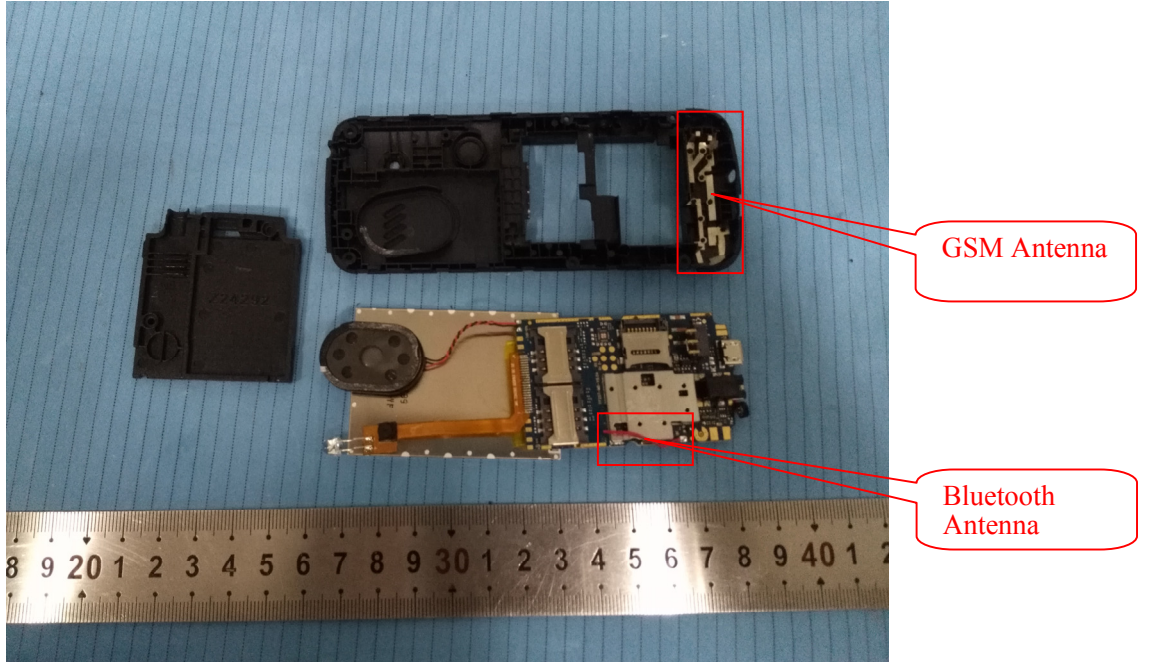
EUT – Cover off View 1



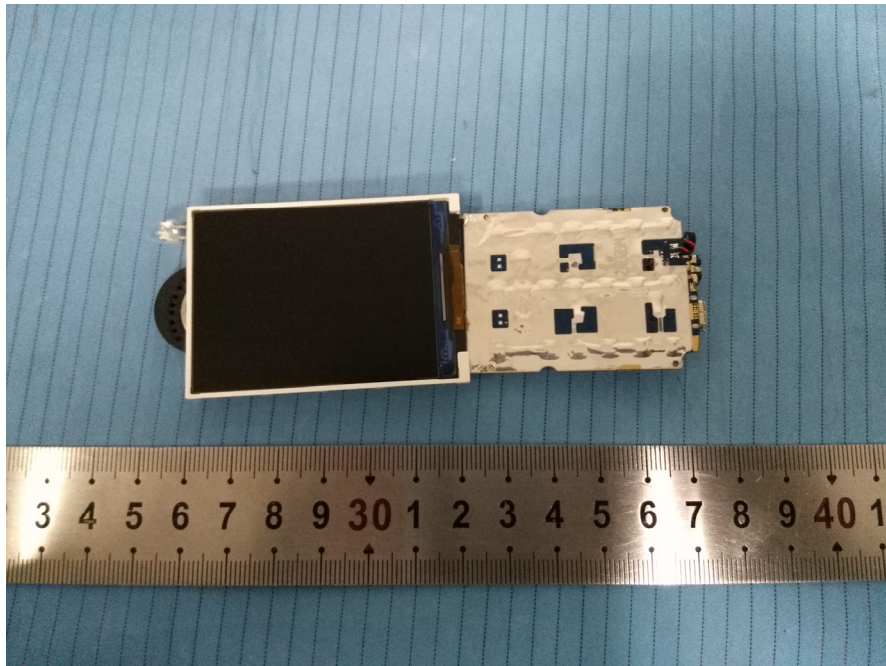
EUT – Cover off View 2



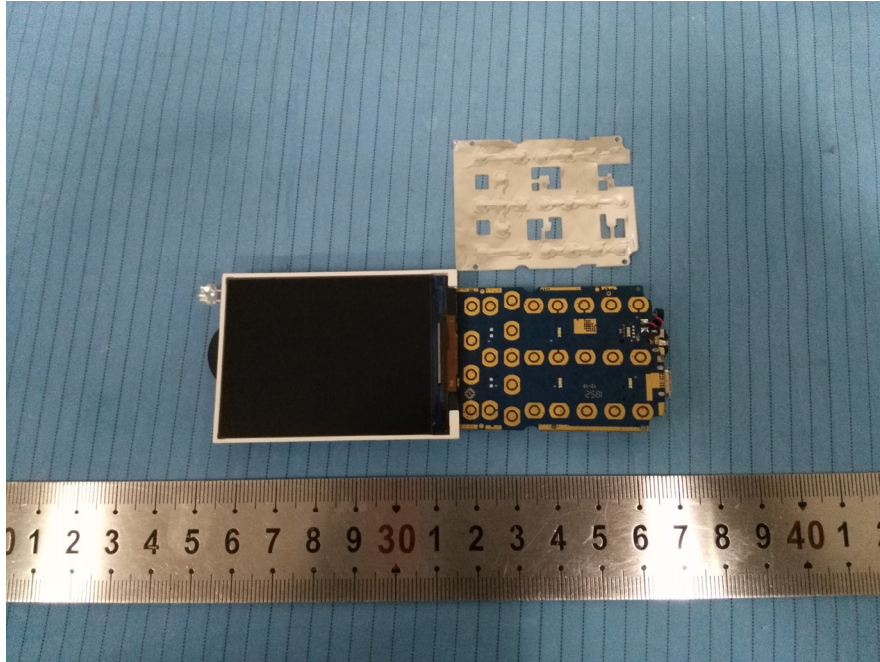
EUT – Cover off View 3



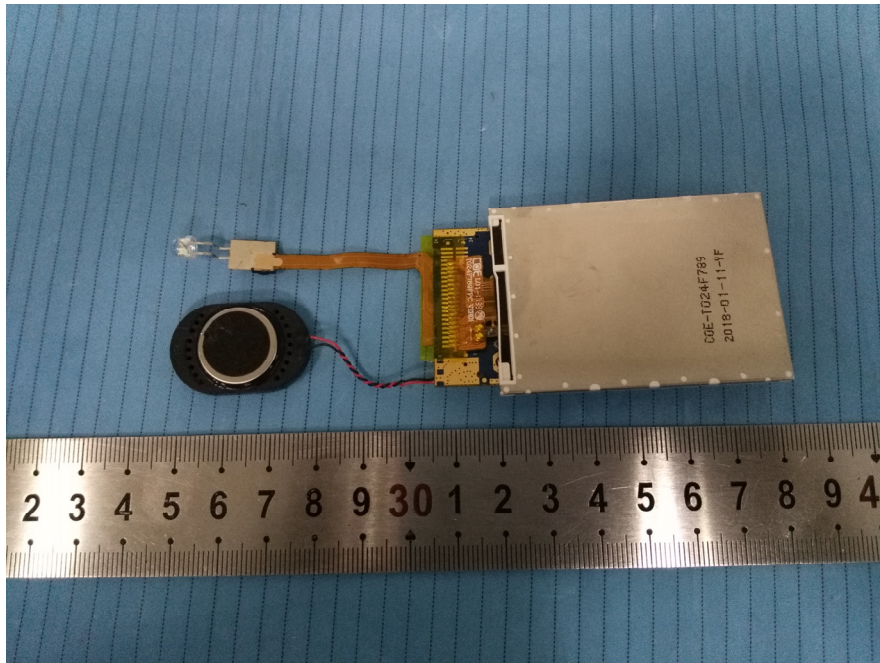
EUT – Main Board Top View 1



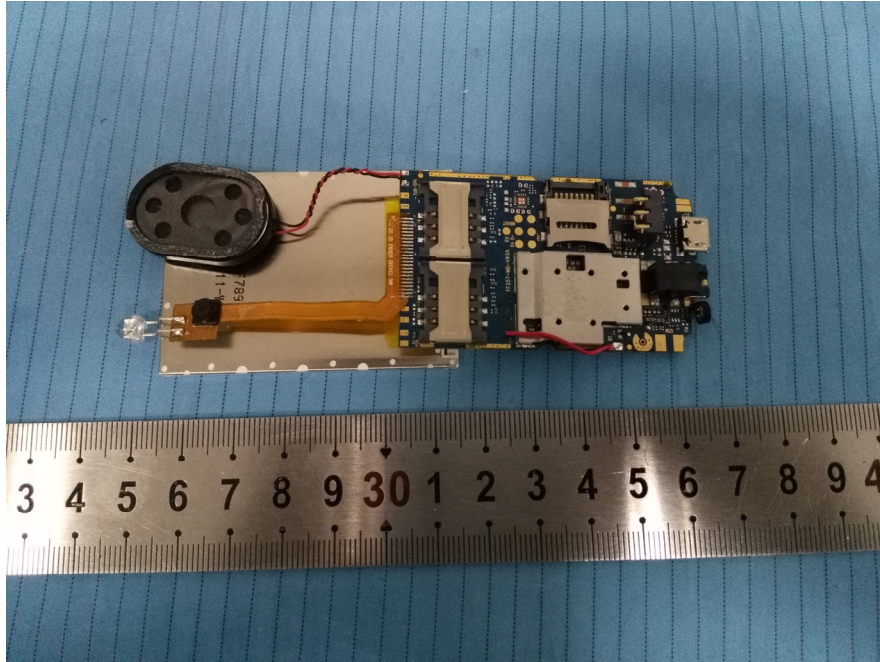
EUT – Main Board Top View 2



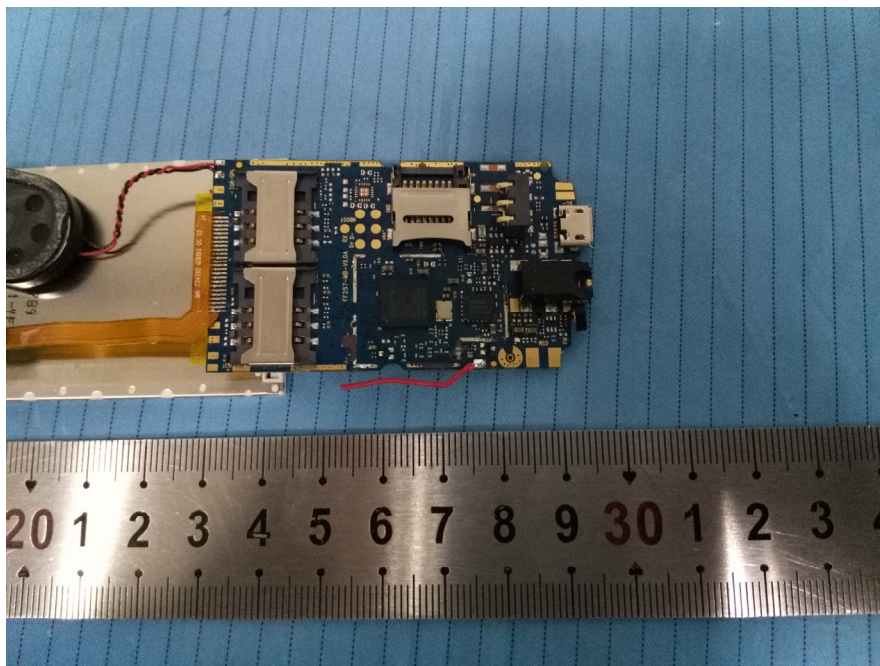
EUT – Main Board Top View 3



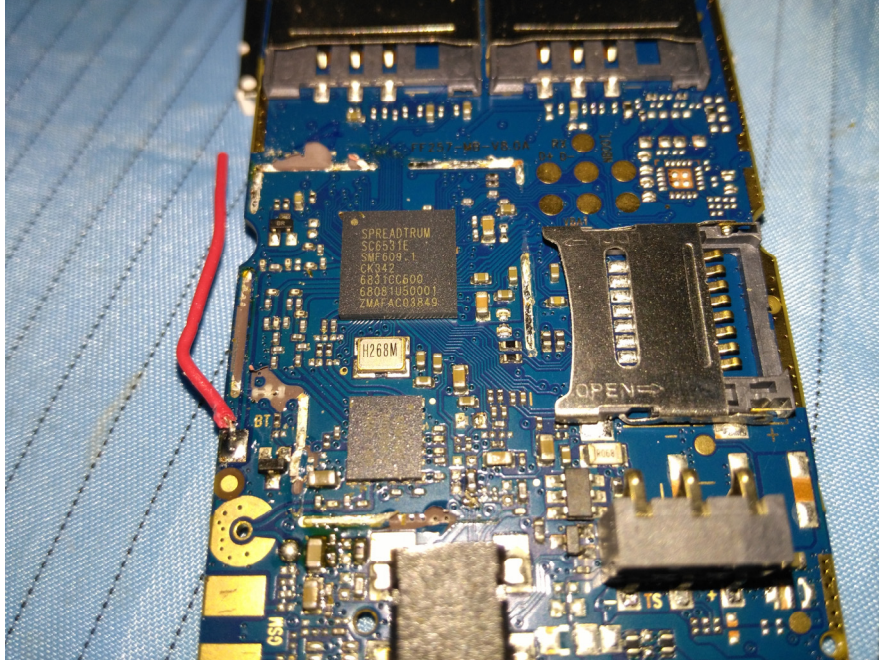
EUT – Main Board Bottom View



EUT – Main Board Bottom Shielding off View




EUT – Main Chip View



EUT – Battery View



EUT – Battery Label View

<p>KRIP</p> <hr/> <p>Li-Ion Rechargeable Battery / Bateria Recargable Li-Ion</p> <p>Battery Model / Modelo de Bateria: B200 Capacity / Capacidad: 1000mAh 3.7Wh Nominal Voltage / Voltage Nominal: 3.7V Charging Voltage Limit / Voltage Límite de Carga: 4.2V Standard / Estandar: GB31241-2014</p> <p>Attention: Use specified charger only. Do not short-circuit. Do not disassemble. Dispose of properly. May explode if damaged or disposed of in fire. Refer to the manual before using the battery.</p> <p>Atención: Utilizar solamente el cargador original. No provoque corto circuito. No desensamblar. Deshágase de la batería de forma adecuada. Riesgo de explosión si se expone al fuego. Consulte el manual antes de usar la batería.</p> <p></p> <p>  </p> <p>Designed by Kripto Mobile Assembled in China</p>		<p>1000mAh 3.7Wh</p> <p>KRIP</p> <p>B200</p> <p>  </p>	
---	--	---	--