

Surfsight AI-12: User Guide



THANK YOU FOR CHOOSING SURFSIGHT!

Surfsight is the ultimate video telematics device for your vehicle and fleet.

For up to date support articles and installation guides please visit our support web pages at surfsight.net under docs.

Feel free to contact us with any questions or feedback.

Our web address: surfsight.net

Our support email: support@surfsight.net

BEFORE YOU BEGIN

Precautions

WARNING:

Do not expose this product to rain, moisture or water under any circumstances, doing so may result in the risk of electric shock or fire.

CAUTION:

To reduce the risk of electric shock, do not perform any servicing other than that contained in the instruction manual unless you are qualified to do so. Have the unit serviced by a qualified service technician if; The Unit has been exposed to rain or water. The unit does not seem to operate normally. The unit exhibits a marked change in performance

CHOKING HAZARD

Some Products may contain components that are small enough to be swallowed. Please keep out of reach of children.

BATTERY WARNING

- It is recommended to always charge using the included chargers. Improper handling of the battery may result in a voided warranty.
- Never dismantle or pierce the battery or allow the battery to short-circuit.
- Never expose the battery to fire.
- Dispose of used batteries observing local regulations.
- NEVER attempt to replace the internal battery

GETTING STARTED

What's in the Box



AI-12 Camera



Mounting Bracket



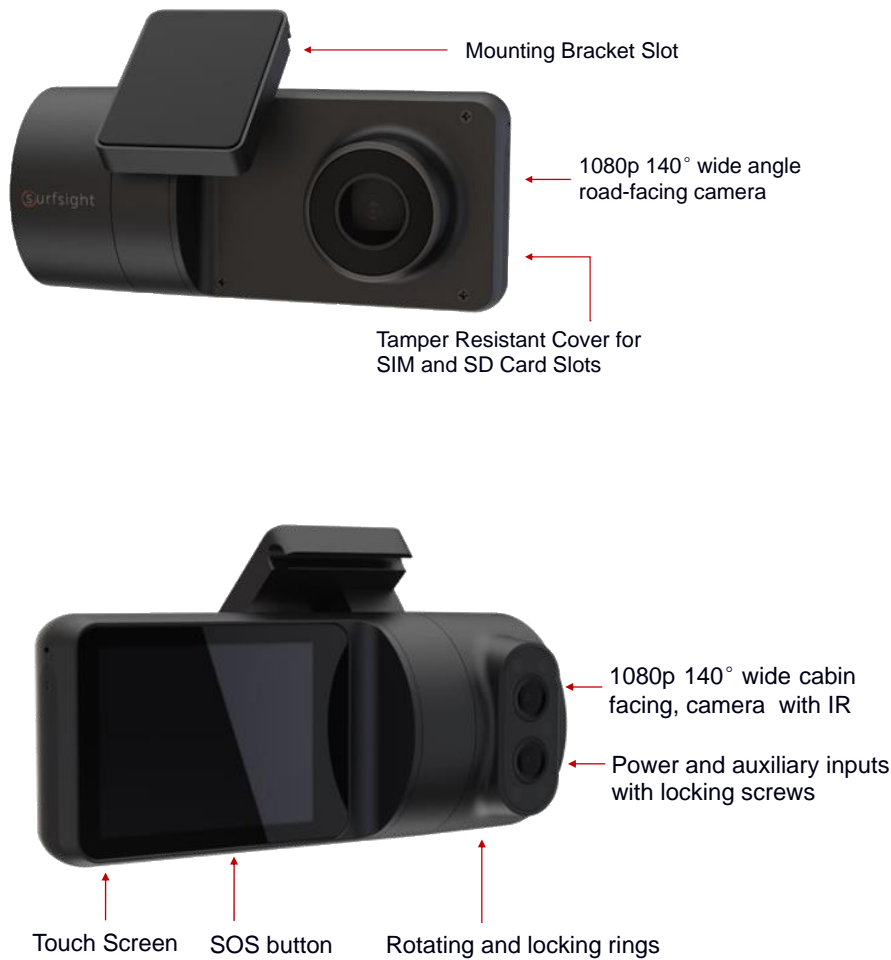
USB Cable



Specialty
Screwdriver

SURFSIGHT AI-12 OVERVIEW

Product Overview



INSTALLING YOUR SURFSIGHT

Initial setup



- Using the specialty screwdriver unscrew the safety screw that locks the tamper proof case on the side of the camera.
- Insert the SIM and SD card into the appropriate slots in the camera
- Mount the camera by attaching the mounting bracket to the camera, remove the 3M adhesive tape cover and mount the camera to the windscreen. The camera should be placed as high as possible on the driver side of the vehicle.
 - ⚠ *Make sure the glass is clean and dry before attaching the 3M adhesive mount to the windshield.*
 - ⚠ *Do not install the product in a location where it can obstruct the drivers field of vision.*

USING YOUR SURFSIGHT

Directing the cameras



Follow the following steps to direct the road and cabin facing cameras.

1. Unmount the camera
2. Using the security screwdriver provided, gently partially unscrew the three security screws on the side of the Surfsight until you can rotate the front and cabin facing cameras. Do not open the screws all the way
3. Make sure that the mounting bracket is not inserted, as it locks Surfsight and does not allow to rotate the cameras.
4. Connect Surfsight to an active power source.
5. Enter live view through the main menu on the touchscreen to view the cameras video.
6. Rotate the cameras until they are directed in the proper direction.
7. Unmount the camera and screw in the security screws on the side of the camera
8. Mount the camera with the mounting bracket.

USING YOUR SURFSIGHT

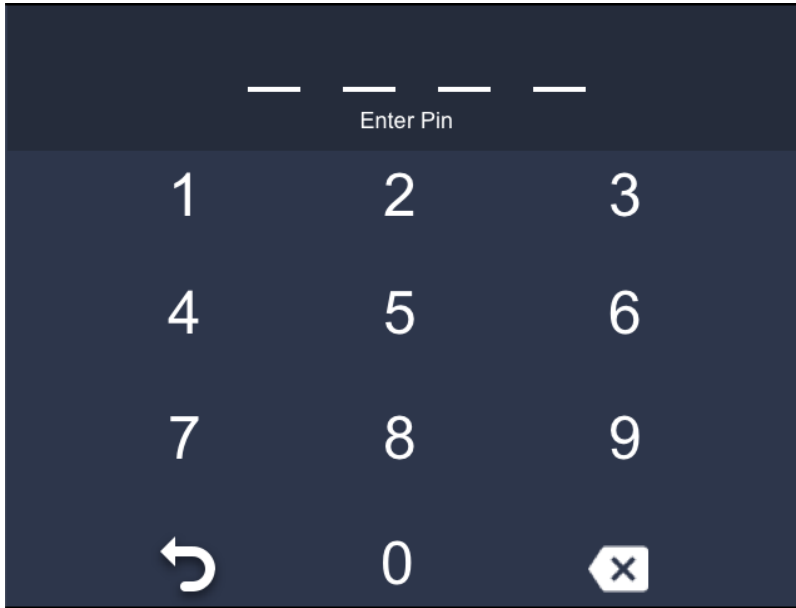
Connect to power



- Surfsight may only be connected to a power source using the supplied cables.
- The power cable connects to the round connector located on the side of the camera.
- **The power source must provide 5V DC and at least 2A** when connected through the supplied USB cable.
- Surfsight only power-on when you connect power source, and will power-off after disconnect power source 15 seconds.

USING YOUR SURFSIGHT

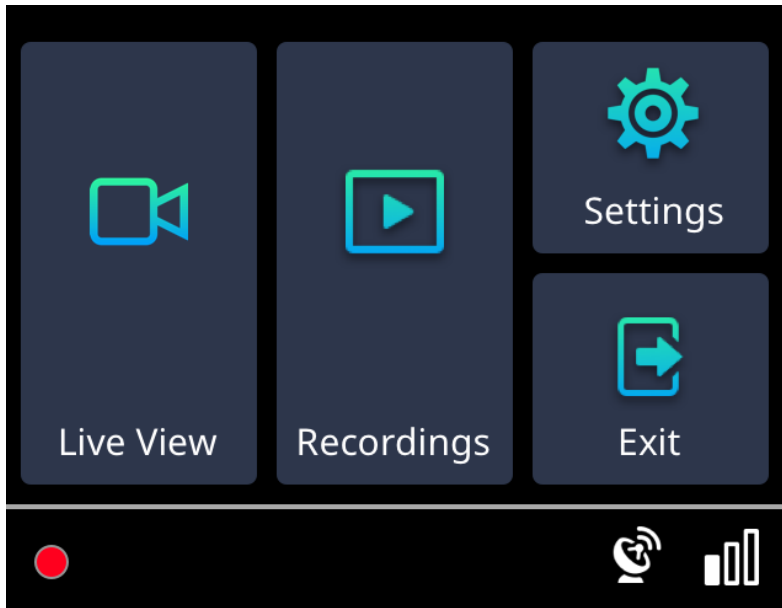
Unlocking your Surfsight



- Press the touchscreen camera on your panel to enter the keypad screen
- Enter 8888, which is the default PIN to enter the main menu. You should now see the main menu.

USING YOUR SURFSIGHT

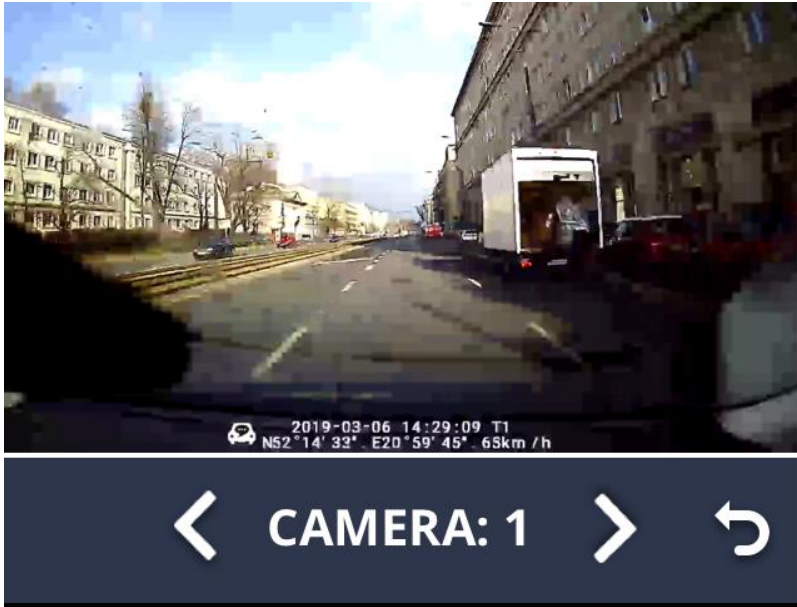
Entering the Main Menu



- The Main Menu has 4 options
 - Live Video
 - Recordings
 - Settings
 - Exit

USING YOUR SURFSIGHT

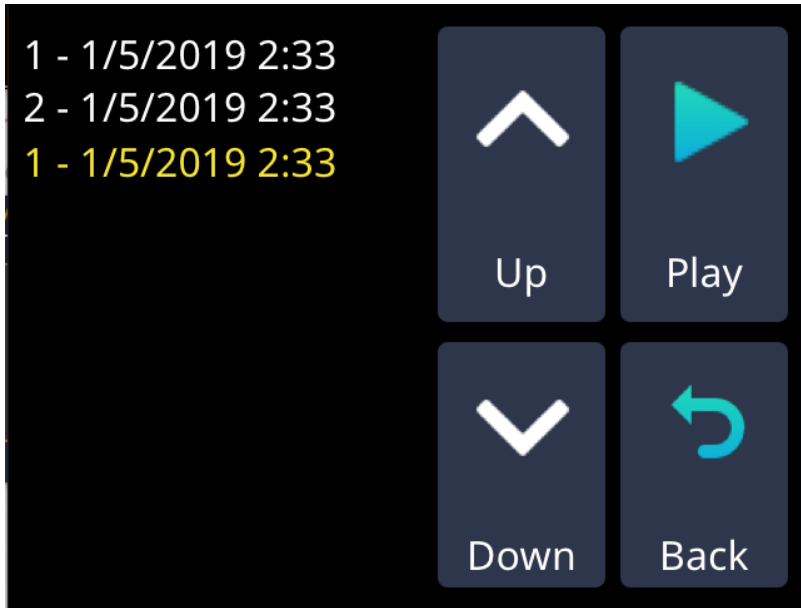
Viewing Live Video



- You will see the live video from the camera displayed on the screen.
- Use the arrow keys to switch between the front and cabin facing cameras.
- Use the arrow back button to return to the main menu.

USING YOUR SURFSIGHT

Viewing Recorded Videos



- A list showing all the videos recorded on the SD card will be displayed on the list.
- Use the arrow buttons to scroll through the videos.
- Use the Play button to play the videos.
- Use the arrow back button to return to the main menu.

USING YOUR SURFSIGHT

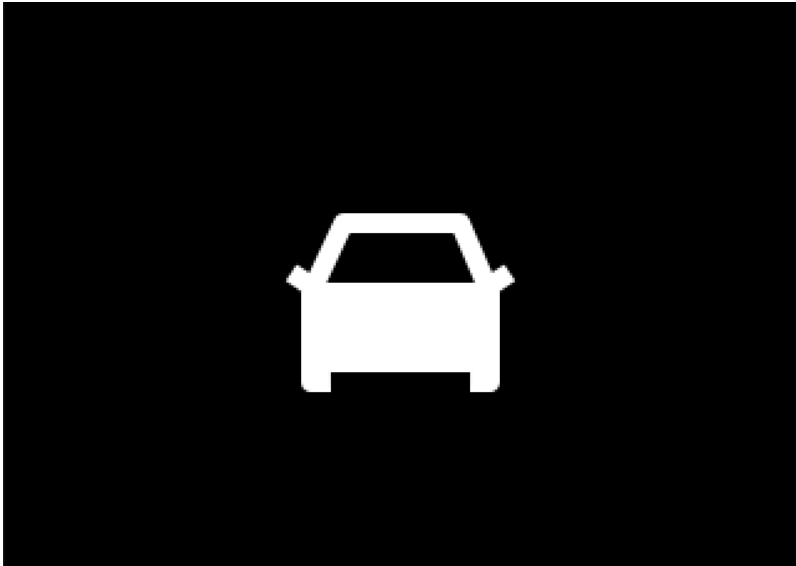
Enter the Settings Menu



- The settings menu will allow you to set various settings available on your Surfsight AI-12 including:
 - Driver Facing Camera
 - Text Overlay in Recordings
 - Distracted Driver Alerts
 - Audio Alarms for distracted driver or dangerous turns
 - Change the default PIN to enter the main menu
 - Calibration of your accelerometer
 - Adjust Volume and Screen Brightness

USING YOUR SURFSIGHT

Driving Alerts



- While driving a White Vehicle icon will be displayed on the screen.
- In case a violent turn or distracted driver event is detected, the car icon will turn red, indicating a visual alert for the driver.
- A voice alert will also be heard in case of a dangerous driving event.

USING YOUR SURFSIGHT

Calibrating your sensors

Surfsight AI-12 contains an internal accelerometer that detects dangerous driving behavior to automatically create video events.

Cabin facing cameras must be directed at the driver

The accelerometer is not calibrated before installation as every vehicle and installation is different, please follow the following steps to calibrate the accelerometer and direct the cameras:

1. Turn on the ignition in the vehicle
2. Make sure that the Surfsight unit is working
3. Make sure that the vehicle is parked on a level surface.
4. Press the touchscreen and enter the default PIN code – 8888
5. Press on the Settings button and choose calibrate

USING YOUR SURFSIGHT

Direct the cameras

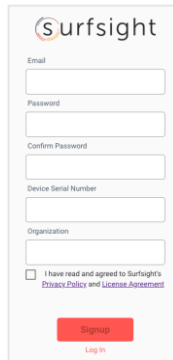


Follow the following steps to direct the road and cabin facing cameras.

1. Unmount the camera
2. Using the security screwdriver provided, gently partially unscrew the three security screws on the side of the unit until you can rotate the front and cabin facing cameras. Do not open the screws all the way
3. Make sure that the mounting bracket is not inserted, as it locks Surfsight and does not allow to rotate the cameras.
4. Connect Surfsight to an active power source.
5. Enter live view through the main menu on the touchscreen to view the cameras video.
6. Rotate the cameras until they are directed in the proper direction.
7. Unmount the camera and screw in the security screws on the side of the camera
8. Mount the camera with the mounting bracket.

SURFSIGHT CLOUD

Connecting to the Surfsight Cloud

A screenshot of the Surfsight web portal login and signup form. The form is titled 'Surfsight' at the top. It contains input fields for 'Email', 'Password', 'Confirm Password', 'Device Serial Number', and 'Organization'. Below these fields is a checkbox labeled 'I have read and agreed to Surfsight's Privacy Policy and License Agreement' with a link to the policy. At the bottom, there are two buttons: a red 'Signup' button and a 'Login' link.

1. Open your internet browser and browse to surfsight.net
2. Click on the Login button and login if you already have a Surfsight account, then login to your account.
3. If you do not have a Surfsight account, you can create a new account for your Surfsight, by clicking on the Signup page.
4. Enter a new account by entering the following:
 - A. Your email
 - B. A password
 - C. The device's IMEI number. The IMEI number can be found on the sticker on the camera itself or on the back side of the carton box which contained the camera.
 - D. A unique organization name to identify your organization.
5. Turn on your car's ignition switch
6. After about a minute you should see your Surfsight's IMEI number in the list of devices with a green icon next to it indicating it is online.
7. Click on your Surfsight in the web portal and choose Front and Rear camera video icons to view live video from your Surfsight.

SURFSIGHT CLOUD

Features Available

The Surfsight cloud service provides a complete video telematic service for your vehicle fleet.

Surfsight cloud allows you to:

- View your entire fleet online through a simple dashboard
- View live video from your fleet at any time
- View live location of your vehicles and get vehicle trip reports on the map
- Dangerous driving events can be automatically uploaded to the Surfsight cloud to be reviewed.
- Get email alerts on dangerous driving events automatically
- Access recordings remotely
- Manage users, permissions, and data access settings
- And much more
- * Surfsight cloud Works only when connected to LTE network.
- * when you use Surfsight cloud need to use data traffic, please confirm your sim information with your service provider.

FCC Warning

This equipment has been tested and found to comply with the limits for a Class B digital device, pursuant to part 15 of the FCC Rules. These limits are designed to provide reasonable protection against harmful interference in a residential installation. This equipment generates, uses and can radiate radio frequency energy and, if not installed and used in accordance with the instructions, may cause harmful interference to radio communications. However, there is no guarantee that interference will not occur in a particular installation. If this equipment does cause harmful interference to radio or television reception, which can be determined by turning the equipment off and on, the user is encouraged to try to correct the interference by one or more of the following measures:

- Reorient or relocate the receiving antenna.
- Increase the separation between the equipment and receiver.
- Connect the equipment into an outlet on a circuit different from that to which the receiver is connected.
- Consult the dealer or an experienced radio/TV technician for help.

Caution: Any changes or modifications to this device not explicitly approved by manufacturer could void your authority to operate this equipment.

This device complies with part 15 of the FCC Rules. Operation is subject to the following two conditions: (1) This device may not cause harmful interference, and (2) this device must accept any interference received, including interference that may cause undesired operation.

Radiation Exposure Statement

This equipment complies with FCC radiation exposure limits set forth for an uncontrolled environment. This equipment should be installed and operated with minimum distance 20cm between the radiator and your body.