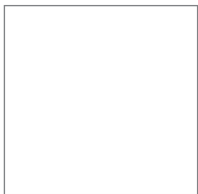




Quick Start Guide



COPYRIGHT ©2018 Hangzhou Hikvision Digital Technology Co., Ltd. or its subsidiaries. ALL RIGHTS RESERVED.

About this Manual

The Manual includes instructions for using and managing the product. Pictures, charts, images and all other information hereinafter are for description and explanation only. The information contained in the Manual is subject to change, without notice, due to firmware updates or other reasons. Please find the latest version in the **ezviz™** website (<http://www.evizlife.com>).

Any and all information, including, among others, wordings, pictures, graphs are the properties of Hangzhou Hikvision Digital Technology Co., Ltd. or its subsidiaries (hereinafter referred to be "Hikvision"). This user manual (hereinafter referred to be "the Manual") cannot be reproduced, changed, translated, or distributed, partially or wholly, by any means, without the prior written permission of Hikvision. Unless otherwise stipulated, Hikvision does not make any warranties, guarantees or representations, express or implied, regarding to the Manual.

Trademarks Acknowledgement

ezviz™, ™, and other Hikvision's trademarks and logos are the properties of Hikvision in various jurisdictions. Other trademarks and logos mentioned below are the properties of their respective owners.

Legal Disclaimer

TO THE MAXIMUM EXTENT PERMITTED BY APPLICABLE LAW, THE PRODUCT DESCRIBED, WITH ITS HARDWARE, SOFTWARE AND FIRMWARE, IS PROVIDED "AS IS", WITH ALL FAULTS AND ERRORS, AND HIKVISION MAKES NO WARRANTIES, EXPRESS OR IMPLIED, INCLUDING WITHOUT LIMITATION, MERCHANTABILITY, SATISFACTORY QUALITY, FITNESS FOR A PARTICULAR PURPOSE, AND NON-INFRINGEMENT OF THIRD PARTY. IN NO EVENT WILL HIKVISION, ITS DIRECTORS, OFFICERS, EMPLOYEES, OR AGENTS BE LIABLE TO YOU FOR ANY SPECIAL, CONSEQUENTIAL, INCIDENTAL, OR INDIRECT DAMAGES, INCLUDING, AMONG OTHERS, DAMAGES FOR LOSS OF BUSINESS PROFITS, BUSINESS INTERRUPTION, OR LOSS OF DATA OR DOCUMENTATION, IN CONNECTION WITH THE USE OF THIS PRODUCT, EVEN IF HIKVISION HAS BEEN ADVISED OF THE POSSIBILITY OF SUCH DAMAGES. TO THE MAXIMUM EXTENT PERMITTED BY APPLICABLE LAW, IN NO EVENT SHALL HIKVISION'S TOTAL LIABILITY FOR ALL DAMAGES EXCEED THE PURCHASE PRICE THE PRODUCT.

HIKVISION does not undertake any liability for personal injury or property damage, as the result of product interruption or service termination cause by: a) improper installation or usage other than as requested; b) the protection of national or public interests; c) Force Majeure; d) yourself or the third party, including not limitation, using any third party's products, software, applications, and among others.

REGARDING TO THE PRODUCT WITH INTERNET ACCESS, THE USE OF PRODUCT SHALL BE WHOLLY AT YOUR OWN RISKS. HIKVISION SHALL NOT TAKE ANY RESPONSIBILITIES FOR ABNORMAL OPERATION,

PRIVACY LEAKAGE OR OTHER DAMAGES RESULTING FROM CYBER ATTACK, HACKER ATTACK, VIRUS INSPECTION, OR OTHER INTERNET SECURITY RISKS; HOWEVER, HIKVISION WILL PROVIDE TIMELY TECHNICAL SUPPORT IF REQUIRED.

SURVEILLANCE LAWS VARY BY JURISDICTION. PLEASE CHECK ALL RELEVANT LAWS IN YOUR JURISDICTION BEFORE USING THIS PRODUCT IN ORDER TO ENSURE THAT YOUR USE CONFORMS TO THE APPLICABLE LAW. YOU FURTHER AGREE THAT THIS PRODUCT IS ONLY FOR CIVIL USE, AND HIKVISION SHALL NOT BE LIABLE IN THE EVENT THAT THIS PRODUCT IS USED WITH ILLEGITIMATE PURPOSES, SUCH AS THIRD PARTY RIGHTS INFRINGEMENT, MEDICAL TREATMENT, SAFETY EQUIPMENT OR OTHER SITUATIONS WHERE THE PRODUCT FAILURE COULD LEAD TO DEATH OR PERSONAL INJURY, OR WEAPON OF MASS DESTRUCTION, CHEMICAL AND BIOLOGICAL WEAPON, NUCLEAR EXPLOSION, AND ANY UNSAFE NUCLEAR ENERGY USES OR ANTI-HUMANITY USAGES. YOU SHOULD UNDERTAKE ALL RESPONSIBILITIES FOR LOSSES OR DAMAGES RESULTING FROM THE ABOVE USAGES WHATSOEVER.

IN THE EVENT OF ANY CONFLICTS BETWEEN THE ABOVE AND THE APPLICABLE LAW, THE LATER PREVAILS.

Regulatory Information

This device complies with Part 15 of the FCC Rules. Operation is subject to the following two conditions:

- (1) This device may not cause harmful interference, and
- (2) This device must accept any interference received, including interference that may cause undesired operation.

Please take attention that changes or modification not expressly approved by the party responsible for compliance could void the user's authority to operate the equipment.

Note: This product has been tested and found to comply with the limits for a Class B digital device, pursuant to Part 15 of the FCC Rules. These limits are designed to provide reasonable protection against harmful interference in a residential installation. This product generates, uses, and can radiate radio frequency energy and, if not installed and used in accordance with the instructions, may cause harmful interference to radio communications. However, there is no guarantee that interference will not occur in a particular installation. If this product does cause harmful interference to radio or television reception, which can be determined by turning the equipment off and on, the user is encouraged to try to correct the interference by one or more of the following measures:

- Reorient or relocate the receiving antenna.
- Increase the separation between the equipment and receiver.
- Connect the equipment into an outlet on a circuit different from that to which the receiver is connected.
- Consult the dealer or an experienced radio/TV technician for help.

This equipment should be installed and operated with a minimum distance 20cm between the radiator and your body.



EU Conformity Statement

This product and - if applicable - the supplied accessories too are marked with "CE" and comply therefore with the applicable harmonized European standards listed under the Radio Equipment Directive 2014/53/EU, the EMC Directive 2014/30/EU, the RoHS Directive 2011/65/EU.



2012/19/EU (WEEE directive): Products marked with this symbol cannot be disposed of as unsorted municipal waste in the European Union. For proper recycling, return this product to your local supplier upon the purchase of equivalent new equipment, or dispose of it at designated collection points. For more information see: www.recyclethis.info.



2006/66/EC and its amendment 2013/56/EU (battery directive): This product contains a battery that cannot be disposed of as unsorted municipal waste in the European Union. See the product documentation for specific battery information. The battery is marked with this symbol, which may include lettering to indicate cadmium (Cd), lead (Pb), or mercury (Hg). For proper recycling, return the battery to your supplier or to a designated collection point. For more information see: www.recyclethis.info.

EC DECLARATION OF CONFORMITY

Hereby, Hangzhou Hikvision Digital Technology Co., Ltd. declares that the radio equipment type [CS-CV228, CS-CV226, CS-CV220, CS-CV320, CS-CV326, CS-CV328, CS-CV420, CS-CV426, CS-CV428] is in compliance with Directive 2014/53/EU.

The full text of the EC DECLARATION OF CONFORMITY is available at the following web link:
<http://www.ezvizlife.com/declaration-of-conformity>.

Safety Instruction

*90: THE EQUIPMENT FOR RESTRICTED ACCESS LOCATIONS, AND OUTER SURFACE OF PRODUCT HAVE

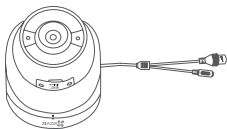


WARNING
OR HOT SURFACE MARKING.
DO NOT TOUCH

Due to the product shape and dimension, the name and address of the importer/manufacture are printed on the package.

SAVE THIS MANUAL FOR FUTURE REFERENCE

Box Content



Camera (x1)



Power Adapter (x1)



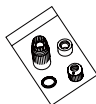
Drill Template (x1)



Base (x1)



Screw Kit (x1)

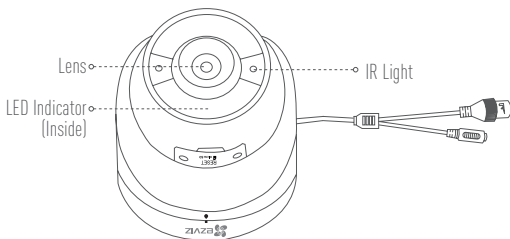


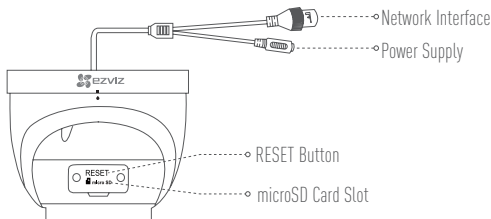
Waterproof Kit (x1)



Quick Start Guide (x1)

Basics





Name	Description
IR Light	Auto light source for dark environment. The camera video has two modes: color (for daylight recording) and black and white with IR illuminator (for night condition).
LED Indicator	<ul style="list-style-type: none"> • Solid Red: Device is starting up. • Slowly Flashing Red: Wi-Fi connection has failed. • Fastly Flashing Red: Device exception (e.g. MicroSD card error). • Solid Blue: Video is being viewed or played back in EZVIZ App. • Fastly Flashing Blue: Device is ready for the Wi-Fi connection. • Slowly Flashing Blue: Device is running properly.
microSD Card	<ul style="list-style-type: none"> • Recommended compatibility: Class 10, Max.128GB. • Initialize the card in the EZVIZ app before using it.
RESET Button	Hold for 5 seconds to restart and reset all parameters to default.

Operations

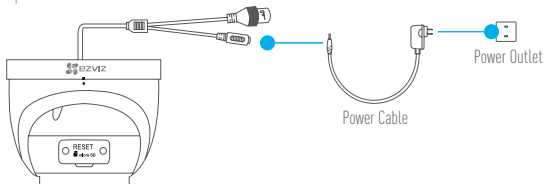
Step 1

Power-on

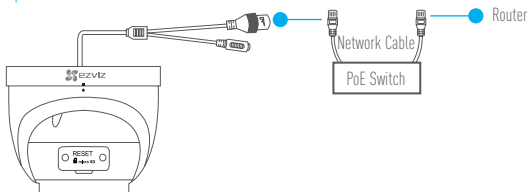
Option 1 Power on the device by connecting to the power outlet by a power cable.

Option 2 Power on the device by PoE switch (Purchased Separately).

Option 1



Option 2



Step 2

Camera Setup

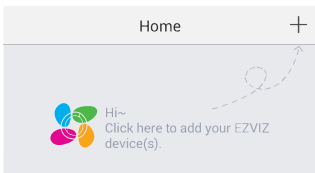
1 Create an user account



- Connect your mobile phone to Wi-Fi.
- Download and install the EZVIZ app by searching "EZVIZ" in App Store or Google Play™.
- Launch the app and register for an EZVIZ user account following the start-up wizard.

2 Add a camera to EZVIZ

- Log into the EZVIZ app.
- In the Home screen, tap "+" on the upper-right corner to continue.



- Scan the QR Code on the cover of this manual or on the body of the camera.
- Follow the EZVIZ app wizard to finish Wi-Fi configuration.



The wired network connection is supported as well, connect the camera to the router with a network cable.

Step 3

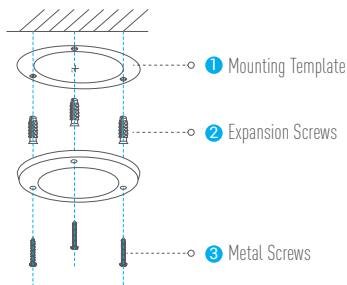
Mounting (Optional)

The camera can be mounted on the wall or ceiling. Here we take wall mounting as an example.

- i** Make sure the wall/ceiling is strong enough to withstand three times the weight of the camera and the mounting.

1 Install the mounting template

- Place drill template onto the surface you have chosen to mount the camera.
- (For the cement wall/ceiling only) Drill screw holes according to the template, and insert three expansion screws.
- Use three metal screws to fix the camera base according to the template.

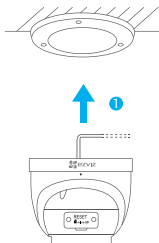


- i** Please tear up the drill template after the mounting plate is installed if needed.

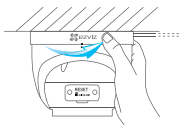
2 Install the Camera

Mount the camera to the mounting plate. Turn it clockwise until it is fixed.

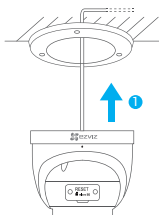
For side wiring



② Rotate camera as shown in the figure.



For top wiring



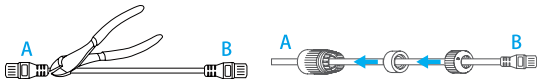
② Rotate camera as shown in the figure.



3 Installing the waterproof kit (Optional)

- i** If the camera is installed outdoors or in the humid environment, please use the waterproof kit.

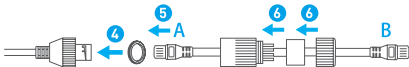
- 1** Cut off one side of the network cable (A). **2** Put the A side through the gasket and the encap.



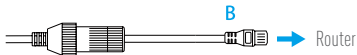
- 3** Connect a new network plug with the cable (A).



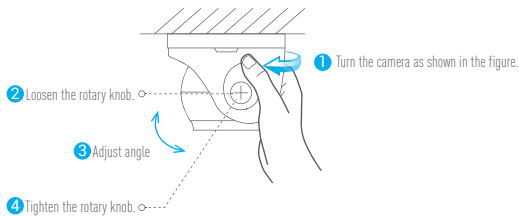
- 4** Insert the gasket to the network interface.
5 Insert the network plug into the network interface of the camera.
6 Insert the gasket into the encap, and tighten up the encap and lock nut.



- 7** Connect the B side with the LAN interface of the router or PoE switch.



4 Adjusting the Surveillance Angle



i For detailed information, please refer to www.ezvizlife.com.