

COPYRIGHT © Hangzhou EZVIZ Software Co., Ltd. ALL RIGHTS RESERVED.

Any and all information, including, among others, wordings, pictures, graphs are the properties of Hangzhou EZVIZ Software Co., Ltd. (hereinafter referred to as "EZVIZ"). This user manual (hereinafter referred to as "the Manual") cannot be reproduced, changed, translated, or distributed, partially or wholly, by any means, without the prior written permission of EZVIZ. Unless otherwise stipulated, EZVIZ does not make any warranties, guarantees or representations, express or implied, regarding to the Manual.


About this Manual

The Manual includes instructions for using and managing the product. Pictures, charts, images and all other information hereinafter are for description and explanation only. The information contained in the Manual is subject to change, without notice, due to firmware updates or other reasons. Please find the latest version in the EZVIZ™ website (<http://www.ezviz.com>).

Revision Record

New release – January, 2022

Trademarks Acknowledgement

EZVIZ™, ™, and other EZVIZ's trademarks and logos are the properties of EZVIZ in various jurisdictions. Other trademarks and logos mentioned below are the properties of their respective owners.

Legal Disclaimer

TO THE MAXIMUM EXTENT PERMITTED BY APPLICABLE LAW, THE PRODUCT DESCRIBED, WITH ITS HARDWARE, SOFTWARE AND FIRMWARE, IS PROVIDED "AS IS", WITH ALL FAULTS AND ERRORS, AND EZVIZ MAKES NO WARRANTIES, EXPRESS OR IMPLIED, INCLUDING WITHOUT LIMITATION, MERCHANTABILITY, SATISFACTORY QUALITY, FITNESS FOR A PARTICULAR PURPOSE, AND NON-INFRINGEMENT OF THIRD PARTY. IN NO EVENT WILL EZVIZ, ITS DIRECTORS, OFFICERS, EMPLOYEES, OR AGENTS BE LIABLE TO YOU FOR ANY SPECIAL, CONSEQUENTIAL, INCIDENTAL, OR INDIRECT DAMAGES, INCLUDING, AMONG OTHERS, DAMAGES FOR LOSS OF BUSINESS PROFITS, BUSINESS INTERRUPTION, OR LOSS OF DATA OR DOCUMENTATION, IN CONNECTION WITH THE USE OF THIS PRODUCT, EVEN IF EZVIZ HAS BEEN ADVISED OF THE POSSIBILITY OF SUCH DAMAGES.

TO THE MAXIMUM EXTENT PERMITTED BY APPLICABLE LAW, IN NO EVENT SHALL EZVIZ'S TOTAL LIABILITY FOR ALL DAMAGES EXCEED THE ORIGINAL PURCHASE PRICE OF THE PRODUCT.

EZVIZ DOES NOT UNDERTAKE ANY LIABILITY FOR PERSONAL INJURY OR PROPERTY DAMAGE AS THE RESULT OF PRODUCT INTERRUPTION OR SERVICE TERMINATION CAUSED BY: A) IMPROPER INSTALLATION OR USAGE OTHER THAN AS REQUESTED; B) THE PROTECTION OF NATIONAL OR PUBLIC INTERESTS; C) FORCE MAJEURE; D) YOURSELF OR THE THIRD PARTY, INCLUDING WITHOUT LIMITATION, USING ANY THIRD PARTY'S PRODUCTS, SOFTWARE, APPLICATIONS, AND AMONG OTHERS.

REGARDING TO THE PRODUCT WITH INTERNET ACCESS, THE USE OF PRODUCT SHALL BE WHOLLY AT YOUR OWN RISKS. EZVIZ SHALL NOT TAKE ANY RESPONSIBILITIES FOR ABNORMAL OPERATION, PRIVACY LEAKAGE OR OTHER DAMAGES RESULTING FROM CYBER ATTACK, HACKER ATTACK, VIRUS INSPECTION, OR OTHER INTERNET SECURITY RISKS; HOWEVER, EZVIZ WILL PROVIDE TIMELY TECHNICAL SUPPORT IF REQUIRED. SURVEILLANCE LAWS AND DATA PROTECTION LAWS VARY BY JURISDICTION. PLEASE CHECK ALL RELEVANT LAWS IN YOUR JURISDICTION BEFORE USING THIS PRODUCT IN ORDER TO ENSURE THAT YOUR USE CONFORMS TO THE APPLICABLE LAW. EZVIZ SHALL NOT BE LIABLE IN THE EVENT THAT THIS PRODUCT IS USED WITH ILLEGITIMATE PURPOSES.

IN THE EVENT OF ANY CONFLICTS BETWEEN THE ABOVE AND THE APPLICABLE LAW, THE LATTER PREVAILS.

Table of Contents

Overview	1
1. Package Contents	1
2. Basics	1
Setup	2
1. Get the EZVIZ App	2
2. Power on Temperature & Humidity Monitor.....	2
3. Add Temperature & Humidity Monitor	3
Installation	4
Specifications	5
Operations on the EZVIZ App	5
1. Homepage.....	5
2. Settings.....	5

Overview

1. Package Contents



Temperature & Humidity Monitor (x1)



3M Tape (x1)



Regulatory Information (x1)



Quick Start Guide (x1)

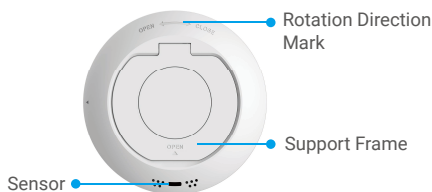
2. Basics

Temperature & Humidity Monitor detects and displays the indoors temperature and humidity and then sends the related data to the linked EZVIZ gateway. After adding the Monitor to EZVIZ APP, you can view the related data on your phone in real time; moreover, it can trigger other EZVIZ smart products to provide you a smart home life.

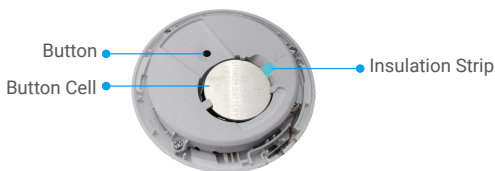
Structure



Front View



Back View



Interior Diagram

Name	Description
Button	<ul style="list-style-type: none"> Press and hold the Button for 5s, the Temperature & Humidity Monitor will restart and then enter device adding mode; at the same time, the signal icon on the device screen will flashes quickly. Short press the Button to switch data display between degree centigrade (°C) and fahrenheit degree (°F). Quickly press the Button twice to switch between Normal Mode and High-preformance Mode.

Display Screen



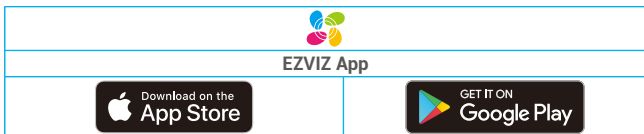
Setup

Follow the steps to set your monitor.

1. Get the EZVIZ app.
2. Power on your Temperature & Humidity Monitor.
3. Add the Monitor to your EZVIZ account.

1. Get the EZVIZ App

1. Connect your mobile phone to Wi-Fi (suggested).
2. Download and install the EZVIZ app by searching for "EZVIZ" in the App Store or Google Play™.
3. Launch the app and register an EZVIZ user account.

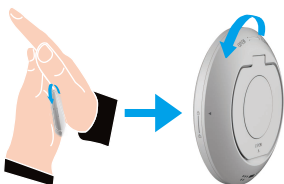


- i** If you have already used the app, please make sure that it is the latest version. To find out if an update is available, go to the app store and search for "EZVIZ".

2. Power on Temperature & Humidity Monitor

Step 1 Remove Rear Cover

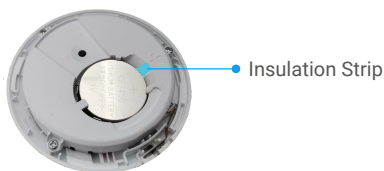
Remove the rear cover of the Temperature & Humidity Monitor by rotating it anticlockwise as shown in the figure below.



- i** It is recommended to put the Temperature & Humidity Monitor on your hands to press and twist it by your palm.

Step 2 Remove Insulation Strip

Draw out the battery insulation strip with your hand.



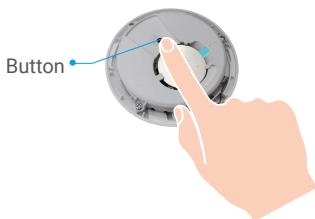
- Please replace the battery in time when low power prompts on your phone.
- If you need to replace the battery, please purchase one CR2450.
- When replacing batteries, please insert with the positive side facing up.

3. Add Temperature & Humidity Monitor

- The Monitor should be used along with EZVIZ Zigbee Smart Gateway (afterinafter referred to as "gateway"). Please add gateway to the EZVIZ Cloud by referring to the gateway user manual, and then add the Monitor to the gateway by following the below steps.

Method One: Add by Scanning QR Code

1. Log in to your account through EZVIZ app, tap the device adding icon and then the QR code scanning interface will be displayed.
2. Press and hold the Button of the Monitor for over 5s till the signal icon on Monitor screen flashes, and then the Monitor enters device adding mode.



- The Monitor will exit device adding mode automatically over 3 minutes.

3. Scan the QR code on the inner side of the cover or the cover of the user manual, and then add the Temperature & Humidity Monitor to the gateway.



5. Add the Temperature & Humidity Monitor to the gateway by following the wizard on the app.
6. Rotate tightly the rear cover of the Temperature & Humidity Monitor clockwise till the aligning mark ► on rear cover is aligned with the mark 🔒 on the front cover.



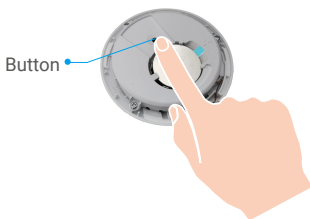
Method Two: Add by the Gateway

- i** When adding Temperature & Humidity Monitor by the gateway, place the Monitor as close to the gateway as possible.

1. Press the Function Button of the gateway to make the gateway enter device adding mode.



2. Press and hold the Button of the Monitor for over 5s till the signal icon on Monitor screen flashes, and then the Monitor enters device adding mode.



4. The Monitor has been added to the gateway successfully and the gateway prompts adding successfully.

5. After the Temperature & Humidity Monitor is added successfully, rotate the Monitor rear cover clockwise to tighten the rear cover till the aligning mark ► on rear cover is aligned with the mark ◻ on the front cover.

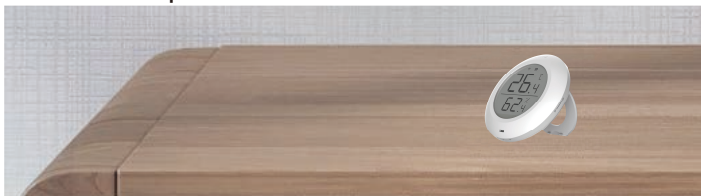


Installation

- i**
- Metal will cause ZigBee signal attenuation, so please do not install the Monitor on a metal door, it is recommended to install it on the wall next to the door.
 - Do not install the Monitor in an environment with corrosivity or intense magnetic fields.
 - It is recommended that the distance between the Monitor and gateway be less than 20m. If there are walls between them, the number of walls should be no more than 2.
 - It is recommended to use the Monitor in a house with an area of no more than 200 square meters; if your house is too large, please purchase two or more Monitors for a better using experience.
 - Before sticking 3M tape, please swipe the dust on the installation surface to enhance the tape stickiness; do not stick it on a lime wall.

Please place the Monitor on desktop as you needed, or you can stick it on the wall below 1 meter with 3M tape.

Place on the desktop



Stick on the place you needed (with 3M tape)



Specifications

Working Temperature	-10℃ ~ 60℃
Storing Temperature	-10℃ ~ 60℃
Working Humidity	0%~95%RH
Wireless Protocol	Zigbee 3.0
Battery Type	CR2450
Battery Duration	8 months

i For additional information about the device, please refer to www.ezvizlife.com.

Operations on the EZVIZ App

i The app interface may be different due to version update, and the interface of the app you installed on your phone shall prevail.

1. Homepage

Launch the EZVIZ app, open the homepage of the related gateway, you can manage your Temperature & Humidity Monitor as needed on the page.

Log	Detection log of the Monitor.
-----	-------------------------------

2. Settings

Parameter	Description
Device Name	Customize the name of your device.
Temperature/ Humidity Alarm	When enabled, the device will send an alarm message to notice you that the temperature or humidity exceeds the set values.
Temperature unit	You can check the current temperature unit of the Monitor.
Performance Mode	You can check the current performance mode of the Monitor.
Related Devices	You can see the gateway connected to your monitor.
Device Information	You can see the device information here.
Share	Share your device.
Delete Device	Tap to delete the Monitor from EZVIZ cloud.

Regulatory Information



This product and - if applicable - the supplied accessories too are marked with "CE" and comply therefore with the applicable harmonized European standards listed under the Radio Equipment Directive 2014/53/EU, the EMC Directive 2014/30/EU, the RoHS Directive 2011/65/EU.



2012/19/EU (WEEE directive): Products marked with this symbol cannot be disposed of as unsorted municipal waste in the European Union. For proper recycling, return this product to your local supplier upon the purchase of equivalent new equipment, or dispose of it at designated collection points. For more information see: www.recyclethis.info.



2006/66/EC and its amendment 2013/56/EU (battery directive): This product contains a battery that cannot be disposed of as unsorted municipal waste in the European Union. See the product documentation for specific battery information. The battery is marked with this symbol, which may include lettering to indicate cadmium (Cd), lead (Pb), or mercury (Hg). For proper recycling, return the battery to your supplier or to a designated collection point. For more information see: www.recyclethis.info.

EC DECLARATION OF CONFORMITY

Hereby, Hangzhou EZVIZ Software Co., Ltd. declares that the radio equipment type [refer to the cover of the quick start guide] is in compliance with Directive 2014/53/EU.

The full text of the EC DECLARATION OF CONFORMITY is available at the following web link:
<http://www.ezviz.com/page/declaration-of-conformity>.

Important Safety Information



Direct current.



Note: Please read the manual before using the device.



This symbol on the device indicates that the safety compatibility manual and / or installation manual must be read, which contains information related to the safe operation of the device.

Caution: Be sure to read these instructions before operating the equipment.



Warning: For SELV DC input: the DC power source shall comply with the Safety Extra-Low Voltage (SELV) requirements of IEC/EN 60950-1, IEC/EN 62368-1.

Warning: The power source should meet limited power source or PS2 requirements according to IEC/EN 60950-1 or IEC/EN 62368-1.



Warning: If you want to disconnect the device from the power source, please unplug the DC power terminal that connects the power adapter and device.

Warning: Disposal of a battery into fire or a hot oven, or mechanically crushing or cutting of a battery that can result in an explosion.

Warning: Leaving a battery in an extremely high temperature surrounding environment that can result in an explosion or the leakage of flammable liquid or gas.

Warning: A battery subjected to extremely low air pressure that may result in an explosion or the leakage of flammable liquid or gas.

Warning: Dispose of used batteries according to the instructions.

Warning: Replace only with the same or equivalent type recommended by the manufacturer.

Caution: THE PRODUCT IS BUILT IN A REPLACEABLE BATTERY.

Warning: Do not ingest battery, Chemical Burn Hazard.

Caution: This product contains a coin/button cell battery. If the coin / button cell battery is swallowed, it can cause severe internal burns in just 2 hours and can lead to death.

Caution: Keep new and used batteries away from children.

Caution: If the battery compartment does not close securely, stop using the product and keep it away from children.

Caution: If you think batteries might have been swallowed or placed inside any part of the body, seek immediate medical attention.

Caution: Risk of fire or explosion if the battery is replaced by an incorrect type.

Informations importantes relatives à la sécurité



Courant continu.



Remarque : Veuillez lire le manuel d'utilisation avant d'utiliser l'appareil.



Ce symbole sur l'appareil indique qu'il faut lire le manuel de compatibilité de sécurité et/ou le manuel d'installation, lequel contient des informations relatives au fonctionnement de l'appareil en toute sécurité.

Prudence : assurez-vous de bien lire ces instructions avant d'utiliser l'équipement.



Avertissement : pour l'entrée CC TBTS : la source d'alimentation CC doit être conforme aux exigences de la norme TBTS (très basse tension de sécurité) EN/CEI 60950-1, EN/CEI 62368-1.

Avertissement : la source d'alimentation doit être conforme aux exigences en matière de source d'alimentation limitée ou PS2 selon la norme CEI/EN 60950-1 ou CEI/EN 62368-1.



Avertissement : si vous souhaitez déconnecter l'appareil de la source d'alimentation, veuillez débrancher la borne d'alimentation CC qui relie l'adaptateur d'alimentation et l'appareil.

Avertissement : l'élimination d'une pile dans le feu ou dans un four chaud, ou l'écrasement ou le découpage mécanique d'une pile peuvent provoquer une explosion.

Avertissement : laisser une pile dans un environnement à température extrêmement élevée peut entraîner une explosion ou une fuite de liquide ou de gaz inflammable.

Avertissement : une pile soumise à une pression d'air extrêmement basse peut entraîner une explosion ou une fuite de liquide ou de gaz inflammable.

Avertissement : éliminez les piles usagées conformément aux instructions.

Avertissement : remplacez les piles uniquement par le même type ou un type équivalent recommandé par le fabricant.

Prudence : CE PRODUIT EST ÉQUIPÉ D'UNE PILE REMPLAÇABLE.

Avertissement : ne pas ingérer la pile, risque de brûlure chimique.

Prudence : ce produit contient une pile bouton. Si la pile bouton est avalée, celle-ci peut provoquer de graves brûlures internes en seulement 2 heures et peut entraîner la mort.

Prudence : conservez les piles neuves et usagées hors de portée des enfants.

Prudence : si le compartiment à pile ne ferme pas correctement, cessez d'utiliser le produit et gardez-le hors de portée des enfants.

Prudence : si vous pensez que des piles ont pu être avalées ou placées dans une partie du corps, consultez immédiatement un médecin.

Prudence : risque d'incendie ou d'explosion si la pile est remplacée par un type incorrect.

FCC Information

Please take attention that changes or modification not expressly approved by the party responsible for compliance could void the user's authority to operate the equipment.

FCC compliance

This equipment has been tested and found to comply with the limits for a Class B digital device, pursuant to part 15 of the FCC Rules. These limits are designed to provide reasonable protection against harmful interference in a residential installation. This equipment generates, uses and can radiate radio frequency energy and, if not installed and used in accordance with the instructions, may cause harmful interference to radio communications. However, there is no guarantee that interference will not occur in a particular installation. If this equipment does cause harmful interference to radio or television reception, which can be determined by turning the equipment off and on, the user is encouraged to try to correct the interference by one or more of the following measures:

- Reorient or relocate the receiving antenna.
- Increase the separation between the equipment and receiver.
- Connect the equipment into an outlet on a circuit different from that to which the receiver is connected.
- Consult the dealer or an experienced radio/TV technician for help.

This equipment should be installed and operated with a minimum distance 20cm between the radiator and your body.

FCC Conditions

This device complies with part 15 of the FCC Rules. Operation is subject to the following two conditions:

1. This device may not cause harmful interference.
2. This device must accept any interference received, including interference that may cause undesired operation.

FCC Supplier's Declaration of Conformity

Equipment Model: refer to the cover of the quick start guide

FCC Compliance Statement:

This device complies with part 15 of the FCC Rules. Operation is subject to the following two conditions:

- (1) This device may not cause harmful interference,
- And (2) this device must accept any interference received, including interference that may cause undesirable operation.

Responsible Party -U.S. Contact Information:

Company name: EZVIZ Inc.

Company address: 908 Canada Court, City of Industry, CA 91748, United States

Internet contact information: www.ezviz.com/us

Industry Canada ICES-003 Compliance

This device meets the CAN ICES-3 (B)/NMB-3(B) standards requirements.

This device complies with Industry Canada licence-exempt RSS standard(s). Operation is subject to the following two conditions:

- (1) this device may not cause interference, and
- (2) this device must accept any interference, including interference that may cause undesired operation of the device.

Under Industry Canada regulations, this radio transmitter may only operate using an antenna of a type and maximum (or lesser) gain approved for the transmitter by Industry Canada. To reduce potential radio interference to other users, the antenna type and its gain should be so chosen that the equivalent isotropically radiated power (e.i.r.p.) is not more than that necessary for successful communication.

This equipment should be installed and operated with a minimum distance 20cm between the radiator and your body.

Le présent appareil est conforme aux CNR d'Industrie Canada applicables aux appareils radioexempts de licence. L'exploitation est autorisée aux deux conditions suivantes :

- (1) l'appareil ne doit pas produire de brouillage, et
- (2) l'utilisateur de l'appareil doit accepter tout brouillage radioélectrique subi, même si le brouillage est susceptible d'en compromettre le fonctionnement.

Conformément à la réglementation d'Industrie Canada, le présent émetteur radio peut fonctionner avec une antenne d'un type et d'un gain maximal (ou inférieur) approuvé pour l'émetteur par Industrie Canada. Dans le but de réduire les risques de brouillage radioélectrique à l'intention des autres utilisateurs, il faut choisir le type d'antenne et son gain de sorte que la puissance isotrope rayonnée équivalente (p.i.r.e.) ne dépasse pas l'intensité nécessaire à l'établissement d'une communication satisfaisante.

Cet équipement doit être installé et utilisé à une distance minimale de 20 cm entre le radiateur et votre corps.

IFETEL Information

La operación de este equipo está sujeta a las siguientes dos condiciones:

- (1) es posible que este equipo o dispositivo no cause interferencia perjudicial
- (2) este equipo o dispositivo debe aceptar cualquier interferencia, incluyendo la que pueda causar su operación no deseada.