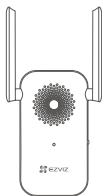


# Package Contents

EN



Doorbell



Chime



Mounting Plate



Screw Kit



Foam Sticker



Drill Template



Pin



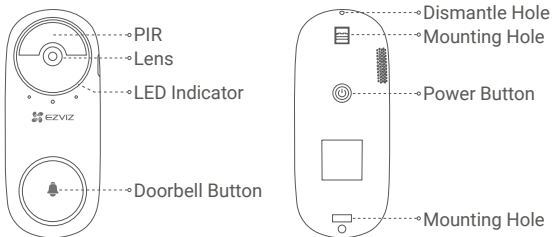
Power Cable



Quick Start Guide

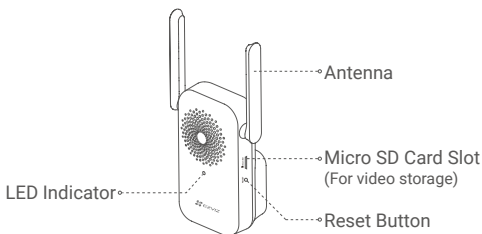
# Basics

## Doorbell



Name	Description
LED Indicator	<ul style="list-style-type: none"><li>• Slow-Flashing Red: Charging.</li><li>• Solid Blue: Doorbell is fully charged.</li></ul>
Power Button	<ul style="list-style-type: none"><li>• Short press for 1 second: Start doorbell.</li><li>• Long press for 5 seconds: Shutdown doorbell.</li></ul>

## Chime



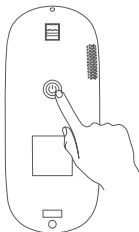
Name	Description
LED Indicator	<ul style="list-style-type: none"><li>• Solid Red: Chime is starting up.</li><li>• Slow-Flashing Red: Wi-Fi connection has failed.</li><li>• Solid Blue: Chime is functioning properly.</li><li>• Fast-Flashing Blue: Chime is ready for Wi-Fi connection.</li></ul>
Reset Button	Hold for 5 seconds to restart and all parameters are reset to default.

**i** The chime appearance is subject to the actual one you have bought.

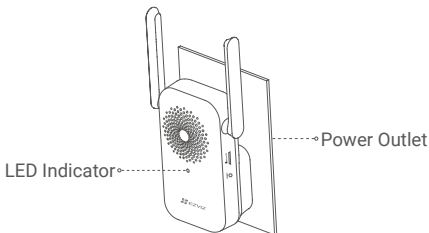
# Operations

## Start Devices

1. Short press the power button for 1 second on the doorbell. Doorbell rings which indicates that startup is complete.



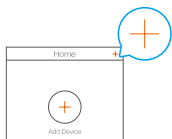
2. Plug the chime into a power outlet. When the LED indicator is fast-flashing blue, it is ready for Wi-Fi connection.



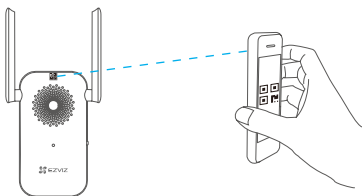
**i** It is recommended to put the chime and doorbell within 3 meters.

## Add to EZVIZ App

1. Create a user account.
  - Connect your mobile phone to Wi-Fi (suggested).
  - Search for "EZVIZ" in the App Store or Google Play™.
  - Download and install the EZVIZ app.
  - Launch the app and register an EZVIZ user account.
2. Add chime to EZVIZ.
  - Log in the EZVIZ app.
  - On the Home screen, tap "+" on the upper-right corner to go to the scan QR code page.

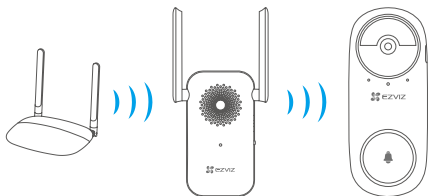


- Scan the QR code on the body of the chime.



- Follow the EZVIZ app wizard to finish Wi-Fi configuration.

The doorbell will connect to the network by automatically connecting to the chime.

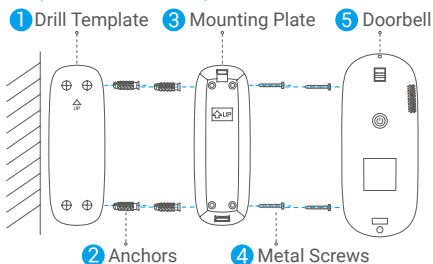


- i** If the network connection of doorbell fails, you can adjust the position of doorbell or chime. It is recommended to put them within 3 meters.

## Installation

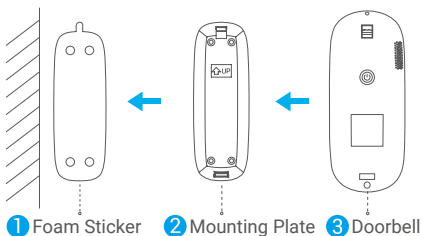
- i** • It is recommended to install the doorbell in indoor entrance such as apartments, to avoid direct exposure to outdoor environment.
- Recommended installation height: 1.2m-1.5m.
- The following situations are not recommended for installation: 1. Places with many metal objects; 2. Corners of load-bearing walls; 3. Rooms with many partition walls.
- Please make sure you have finished Wi-fi configuration of the chime and its LED indicator is solid blue before installation.
- It is recommended to charge the doorbell before use.

## Option 1 (Recommended)



- i** When fixing the mounting plate with metal screws, keep the mounting plate undeformed to ensure that the doorbell is well buckled.

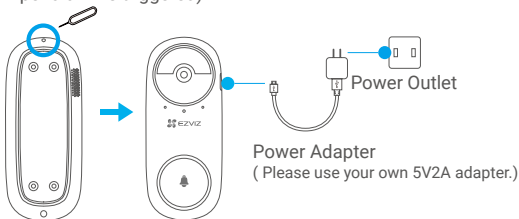
## Option 2



- i** Please paste the foam sticker and mounting plate to smooth surface.

## Maintenance

When the doorbell battery is low, use the pin to remove the doorbell from the mounting plate for charging (shutdown the doorbell if tamper alarm is triggered).



- i** For detailed information, please visit [www.ezvizlife.com](http://www.ezvizlife.com).

## Regulatory Information



This product and - if applicable - the supplied accessories too are marked with "CE" and comply therefore with the applicable harmonized European standards listed under the Radio Equipment Directive 2014/53/EU, the EMC Directive 2014/30/EU, the RoHS Directive 2011/65/EU.



2012/19/EU (WEEE directive): Products marked with this symbol cannot be disposed of as unsorted municipal waste in the European Union. For proper recycling, return this product to your local supplier upon the purchase of equivalent new equipment, or dispose of it at designated collection points. For more information see: [www.recyclethis.info](http://www.recyclethis.info)



2006/66/EC and its amendment 2013/56/EU (battery directive): This product contains a battery that cannot be disposed of as unsorted municipal waste in the European Union. See the product documentation for specific battery information. The battery is marked with this symbol, which may include lettering to indicate cadmium (Cd), lead (Pb), or mercury (Hg). For proper recycling, return the battery to your supplier or to a designated collection point. For more information see: [www.recyclethis.info](http://www.recyclethis.info)

### EC DECLARATION OF CONFORMITY

Hereby, Hangzhou EZVIZ Software Co., Ltd. declares that the radio equipment type [CS-C1C, CS-C1HC, CS-C1T, CS-C2C, CS-CV206, CS-CV310, CS-C3N, CS-C3W, CS-C3WN, CS-C3X, CS-C6N, CS-CV246, CS-CV248, CS-C6CN, CS-C6C, CS-C6W, CS-TY1, CS-TY2, CS-TY3, CS-CV336, CS-DP1, CS-DP1C, CS-DP2C, CS-DB2C, CS-C4W, CS-C4C, CS-CV228, CS-C5W, CS-C5C, CS-C5HC, CS-C5X, CS-C5HX, CS-C8W, CS-C8C, CS-C3A, CS-BC1, CS-W2H, CS-X5S-4W, CS-X5S-8W, CS-A1-32W, CS-T9-A, CS-T4-A] is in compliance with Directive 2014/53/EU.

The full text of the EC DECLARATION OF CONFORMITY is available at the following web link:

<http://www.ezvizlife.com/declaration-of-conformity>.

## Use only power supplies listed in the Table.

Equipment model	Adapter manufacture	Adapter model
CS-C1C/ CS-C1HC/ CS-C1T/ CS-C2C/ CS-CV206/ CS-CV246/ CS-C6N/ CS-C6CN/ CS-C6C/ CS-TY1/ CS-TY2/ CS-TY3/ CS-W2D/ CS-A1-32W/ CS-T9-A	Shenzhen Honor Electronic Co Ltd	ADS-5RE-06 05050EPCU/EPC(US), ADS-5RH-06 05050EPB(UK), ADS-5RH-06 05050EPG(EU), ADS-5RH-06 05050EPSA(AU), ADS-5RH-06 05050EPBR(BR), ADS-5RH-06 05050EPI(IN), ADS-5MA-06A 05050GPK(KR)
CS-CV248/ CS-C6W/ CS-C6Wi/ CS-CV336/ CS-DP1/ CS-DP1C/ CS-DP2C/ CS-C3A/ CS-BC1	Shenzhen Honor Electronic Co Ltd	ADS-10LA-06 05010EPCU/EPC(US), ADS-10RH-06 05010EPB (UK), ADS-10RH-06 05010EPG(EU), ADS-10RH-06 05010EPSA(SA), ADS-10RH-06 05010EPBR(BR), ADS-10RH-06 05010EPI(IN), ADS-12CG-06 05010EPC(JP)
CS-CV310/ CS-C3N/ CS-C3W/ CS-C3WN/ CS-C3X/ CS-SD1/ CS-C4W/ CS-C4C/ CS-CV228/ CS-C8W/ CS-C8C/ CS-W2H/ CS-W3C-WD1200G/ CS-T8-B	Shenzhen Honor Electronic Co Ltd	ADS-12FG-12N 12012EPCU(US), ADS-12FG-12N 12012EPB(UK), ADS-12FG-12N 12012EPG(EU), ADS-12FB-12 12012EPSA(AU), ADS-12FG-12N 12012EPBR(BR), ADS-12FG-12N 12012EPI(IN)
CS-X5S-4W/ CS-X5S-8W	Moso Power Supply Technology Co. Ltd	MSA-C1500IC12.0-18P-GB(UK), MSA-C1500IC12.0-18P-DE, MSA-C1500IC12.0-18P-AU(AU), MSA-C1500IC12.0-18P-BR(BR), ADS-25FSG-12 12018GPI(IN)

## Important Safety Information



**Note:** Please read the manual before using the device.



**Caution:** This symbol on the device indicates that the safety compatibility manual and / or installation manual must be read, which contains information related to the safe operation of the device. Be sure to read these instructions before operating the equipment.



**Warning:** The separate earthing terminal must be permanently connected to earth.

**Warning:** For SELV DC input: the DC power source shall comply with the Safety Extra-Low Voltage (SELV) requirements of IEC 60950-1.



**Caution:** Do not block ventilation openings while the system is on, and keep at least 2 cm distance from ventilation openings and walls or other things which may block the openings.

**Warning:** Disposal of a battery into fire or a hot oven, or mechanically crushing or cutting of a battery that can result in an explosion.

**Warning:** Leaving a battery in an extremely high temperature surrounding environment that can result in an explosion or the leakage of flammable liquid or gas.

**Warning:** A battery subjected to extremely low air pressure that may result in an explosion or the leakage of flammable liquid or gas.

**Warning:** Dispose of used batteries according to the instructions.

**Warning:** Replace only with the same or equivalent type recommended by the manufacturer.

**Caution:** THE PRODUCT IS BUILT IN A REPLACEABLE BATTERY.

**Warning:** Do not ingest battery, Chemical Burn Hazard.

**Caution:** This product contains a coin/button cell battery. If the coin / button cell battery is swallowed, it can cause severe internal burns in just 2 hours and can lead to death.

**Caution:** Keep new and used batteries away from children.

**Caution:** If the battery compartment does not close securely, stop using the product and keep it away from children.

**Caution:** If you think batteries might have been swallowed or placed inside any part of the body, seek immediate medical attention.

**Caution:** Risk of fire or explosion if the battery is replaced by an incorrect type.

## FCC Information

Please take attention that changes or modification not expressly approved by the party responsible for compliance could void the user's authority to operate the equipment.

## FCC compliance

This equipment has been tested and found to comply with the limits for a Class B digital device, pursuant to part 15 of the FCC Rules. These limits are designed to provide reasonable protection against harmful interference in a residential installation. This equipment generates, uses and can radiate radio frequency energy and, if not installed and used in accordance with the instructions, may cause harmful interference to radio communications. However, there is no guarantee that interference will not occur in a particular installation. If this equipment does cause harmful interference to radio or television reception, which can be determined by turning the equipment off and on, the user is encouraged to try to correct the interference by one or more of the following measures:

- Reorient or relocate the receiving antenna.
- Increase the separation between the equipment and receiver.
- Connect the equipment into an outlet on a circuit different from that to which the receiver is connected.
- Consult the dealer or an experienced radio/TV technician for help.

This equipment should be installed and operated with a minimum distance 20cm between the radiator and your body.

## FCC Conditions

This device complies with part 15 of the FCC Rules. Operation is subject to the following two conditions:

1. This device may not cause harmful interference.
2. This device must accept any interference received, including interference that may cause undesired operation.

## Industry Canada ICES-003 Compliance

This device meets the CAN ICES-3 (B)/NMB-3(B) standards requirements.

This device complies with Industry Canada licence-exempt RSS standard(s). Operation is subject to the following two conditions:

- (1) this device may not cause interference, and
  - (2) this device must accept any interference, including interference that may cause undesired operation of the device.
- Under Industry Canada regulations, this radio transmitter may only operate using an antenna of a type and maximum (or lesser) gain approved for the transmitter by Industry Canada. To reduce potential radio interference to other users, the antenna type and its gain should be so chosen that the equivalent isotropically radiated power (e.i.r.p.) is not more than that necessary for successful communication.

This equipment should be installed and operated with a minimum distance 20cm between the radiator and your body.

Le présent appareil est conforme aux CNR d'Industrie Canada applicables aux appareils radioexemptés de licence. L'exploitation est autorisée aux deux conditions suivantes :

- (1) l'appareil ne doit pas produire de brouillage, et
- (2) l'utilisateur de l'appareil doit accepter tout brouillage radioélectrique subi, même si le brouillage est susceptible d'en compromettre le fonctionnement.

Conformément à la réglementation d'Industrie Canada, le présent émetteur radio peut fonctionner avec une antenne d'un type et d'un gain maximal (ou inférieur) approuvé pour l'émetteur par Industrie Canada. Dans le but de réduire les risques de brouillage radioélectrique à l'intention des autres utilisateurs, il faut choisir le type d'antenne et son gain de sorte que la puissance isotrope rayonnée équivalente (p.i.r.e.) ne dépasse pas l'intensité nécessaire à l'établissement d'une communication satisfaisante.

Cet équipement doit être installé et utilisé à une distance minimale de 20 cm entre le radiateur et votre corps.

## IFETEL Information

La operación de este equipo está sujeta a las siguientes dos condiciones:

- (1) es posible que este equipo o dispositivo no cause interferencia perjudicial
- (2) este equipo o dispositivo debe aceptar cualquier interferencia, incluyendo la que pueda causar su operación no deseada.

